

Evolution of Hubble wedges in episodic protostellar outflows

P. F. Rohde,¹★ S. Walch,¹★ D. Seifried¹,¹ A. P. Whitworth,² S. D. Clarke¹ and D. A. Hubber³

¹*I. Physikalisches Institut, Universität zu Köln, Zùlpicher Str. 77, D-50937 Köln, Germany*

²*School of Physics and Astronomy, Cardiff University, Cardiff CF24 3AA, UK*

³*Universitäts-Sternwarte München, Scheinerstraße 1, D-81679 München, Germany*

Accepted 2018 November 30. Received 2018 November 30; in original form 2018 August 23

ABSTRACT

Young low-mass protostars undergo short phases of high accretion and outburst activity leading to lumpy outflows. Recent observations have shown that the position–velocity and mass–velocity diagrams of such outflows exhibit individual bullet-like features; some of these bullets subscribe to a ‘Hubble Law’ velocity relation, and others are manifest as ‘Hubble wedges’. In order to explore the origin of these features, we have developed a new episodic outflow model for the SPH code GANDALF, which mimics the accretion and ejection behaviour of FU-Ori-type stars. We apply this model to simulations of star formation, invoking two types of initial conditions: spherically symmetric cores in solid-body rotation with $\rho \propto r^{-2}$, and spherically symmetric turbulent cores with density proportional to the density of an Bonnor–Ebert sphere. For a wide range of model parameters, we find that episodic outflows lead to self-regulation of the ejected mass and momentum, and we achieve acceptable results, even with relatively low resolution. Using this model, we find that recently ejected outflow bullets produce a ‘Hubble wedge’ in the position–velocity relation. However, once such a bullet hits the leading shock front, it decelerates and aligns with older bullets to form a ‘Hubble-law’. Bullets can be identified as bumps in the mass–velocity relation, which can be fit with a power-law, $dM/dv_{\text{RAD}} \propto v_{\text{RAD}}^{-1.5}$.

Key words: stars: formation – stars: protostars – stars: winds, outflows.

1 INTRODUCTION

In the *core accretion* scenario for star formation, collapsing dense cores form protostars, and these protostars are usually surrounded by accretion discs (e.g. Shu & Adams 1987; Tan et al. 2014, and references therein). However, the observed luminosities of such protostars, and therefore by implication also their accretion rates, are typically much lower than one would expect, given their masses and formation time-scales, and assuming steady accretion; this mismatch is called ‘the luminosity problem’ (Kenyon et al. 1990, 1994; Kenyon & Hartmann 1995). The luminosity problem can be mitigated if the accretion from the disc onto the protostar is episodic, with a large fraction of the accretion occurring in short intense events called outbursts (Offner & McKee 2011; Dunham & Vorobyov 2012; Cesaroni et al. 2018; Hsieh et al. 2018; Ibryamov, Semkov & Peneva 2018; Kuffmeier et al. 2018). Such outbursts are observed in FU-Orionis-type stars (FUors), which undergo a rapid increase in accretion rate, from $\sim 10^{-7} M_{\odot} \text{ yr}^{-1}$ to $\sim 10^{-4} M_{\odot} \text{ yr}^{-1}$, for a period of order 10 years (Herbig 1966; Hartmann & Kenyon 1985;

Hartmann et al. 1989; Audard et al. 2014; Safron et al. 2015; Fehér et al. 2017). The cause of this behaviour is still debated, but one possibility is the interplay of gravitational and magnetorotational instabilities (MRI; Balbus & Hawley 1991) in the disc (e.g. Zhu, Hartmann & Gammie 2009a; Zhu et al. 2010a; Stamatellos, Whitworth & Hubber 2011b; Kuffmeier et al. 2018). Using a large ensemble of Smoothed Particle Hydrodynamics (SPH) simulations Lomax, Whitworth & Hubber (2016a,b) conclude that episodic accretion is necessary to reproduce the observed stellar initial mass function and the ratio of brown dwarfs to hydrogen-burning stars.

Most, possibly all, forming protostars launch fast bipolar outflows (see, e.g., the reviews of Arce et al. (2007); Frank et al. (2014); Bally (2016), or the recent results from Samal et al. (2018)). The inference is that, during the collapse, gravitational energy is converted into kinetic and magnetic energy, which then drives and collimates the outflow, either through magnetic pressure or magnetocentrifugal forces (Blandford & Payne 1982; Lynden-Bell 2003; Pudritz et al. 2007; Machida, Inutsuka & Matsumoto 2008; Seifried et al. 2012; Frank et al. 2014; Bally 2016). The outflow removes a significant fraction of the angular momentum from the star–disc system, enabling the gas in the accretion disc to reach the central protostar (Konigl & Pudritz 2000; Pudritz et al. 2007). Since the

* E-mail: rohde@ph1.uni-koeln.de (PFR); seifried@ph1.uni-koeln.de (SW)

outflows are accretion-driven and the accretion is episodic, outflows are episodic too (Reipurth 1989; Hartigan, Edwards & Ghandour 1995; Hartmann 1997; Konigl & Pudritz 2000; Arce et al. 2007; Hennebelle et al. 2011; Kuiper, Yorke & Turner 2015; Bally 2016; Choi et al. 2017; Cesaroni et al. 2018).

The collimated, high-velocity jet is usually traced by shock-excited H_2 in the early embedded phase, and later by $H\alpha$, [S II], [N II], and O I (see, e.g. the review by Bally 2016). These jets have velocities ranging from $\sim 10 \text{ km s}^{-1}$ to $\sim 150 \text{ km s}^{-1}$, and carve out narrow channels (Mundt & Fried 1983; Bally 2016; Liu et al. 2018). In addition, the jets are surrounded by low-velocity, wide-angle winds, with velocities up to $\sim 30 \text{ km s}^{-1}$. These winds are launched further out in the accretion disc (Cabrit, Raga & Gueth 1997; Belloche et al. 2002; Lee et al. 2002; Arce et al. 2007; Frank et al. 2014). The collimated jet and the low-velocity, wide-angle wind entrain secondary, low-density, molecular gas, leading to a molecular outflow, mainly traced by CO and to a lesser extent by SiO (Arce et al. 2007). Lines from SO and SO_2 trace gas that has been entrained by the wide-angle wind (Tabone et al. 2017). The outflow terminates in a bow shock, where it collides with the ambient medium (the leading shock front), thus forming a shock-compressed layer of gas. Changes in the ejection rate, caused by sudden accretion events, lead to the formation of bullets and internal working surfaces, which are shocked layers between the fast ejecta and the gas in the outflow cavity. More evolved outflows break out of their parental core or cloud and form parsec-scale outflows, traced by chains of Herbig–Haro objects. In some cases, these chains extend to over 10 per cent, e.g. HH 131 with an extent of 17 per cent (Reipurth, Bally & Devine 1997; Reipurth, Devine & Bally 1998). The velocities and spacings of these chains of Herbig–Haro objects allow one to constrain the episodic accretion history of the launching protostar.

A common relation observed in protostellar outflows is a linear position–velocity (PV) relation, i.e. a ‘Hubble Law’, in which the velocity of the outflowing gas increases linearly with distance from the source (Lada & Fich 1996). Recent observations show that the PV diagram also exhibits so called ‘Hubble Wedges’ of high-velocity emission, caused by the bow shocks of individual outflow bullets (Bachiller et al. 1990; Arce & Goodman 2001; Tafalla et al. 2004; Santiago-García et al. 2009; Wang et al. 2014).

In addition, spectral line observations of molecular outflows show a power-law mass–velocity (MV) relation

$$\frac{dM}{dv_{\text{RAD}}} \propto v_{\text{RAD}}^{-\gamma}, \quad (1)$$

as first reported by Kuiper, Zuckerman & Rodriguez Kuiper (1981). While some objects show a single power-law MV relation, others can only be fit with a broken power-law (Lada & Fich 1996; Davis et al. 1998; Ridge & Moore 2001; Birks, Fuller & Gibb 2006; Stojimirović, Snell & Narayanan 2008; Qiu et al. 2011; Mao, Yang & Lu 2014; Plunkett et al. 2015; Liu et al. 2017). In these cases, the low-velocity component has a shallow slope (i.e. low γ_ℓ), and the high-velocity component has a much steeper slope (i.e. $\gamma_h \gg \gamma_\ell$).

Matzner & McKee (1999) show analytically that, for an idealized continuous hydrodynamical outflow, $\gamma_\ell = 2$, independent of the outflow velocity, density, or temperature. However, observations and simulations show that γ_ℓ can range from ~ 1 to ~ 3 with a mode of $\gamma_\ell \simeq 1.8$ (Lada & Fich 1996; Richer et al. 2000; Arce et al. 2007; Plunkett et al. 2015; Liu et al. 2017; Li, Klein & McKee 2018). Arce & Goodman (2001) find that episodic outflows can lead to a much steeper relation, with $\gamma_\ell \sim 2.7$. Using 1.3 mm waveband continuum and molecular line observations, Qiu & Zhang (2009) detect jumps in the MV relation of the outflows in the high-mass

star-forming region HH 80–81, and attribute these to molecular bullets, caused by episodic outflow events.

In the last decade, the challenge of simulating protostellar outflows self-consistently has been tackled by a number of authors (Machida, Inutsuka & Matsumoto 2009; Hennebelle et al. 2011; Price, Tricco & Bate 2012; Seifried et al. 2012; Machida & Hosokawa 2013; Bate, Tricco & Price 2014; Machida 2014; Tomida 2014; Tomida, Okuzumi & Machida 2015; Lewis & Bate 2017). Machida et al. (2009) and Machida (2014) are able to reproduce the two outflow components in high-resolution Magneto-hydrodynamics (MHD) simulations of collapsing Bonnor–Ebert spheres. However, resolving the jet launching region, $r_{\text{LAUNCH}} \sim R_\odot$, and at the same time following the outflow on parsec scales, over $> 10^5$ yrs, is not presently feasible computationally. Hence, these simulations are limited either to short simulation times, or to low jet velocities. An alternative approach is to invoke an almost resolution-independent sub-grid model (Nakamura & Li 2007; Cunningham et al. 2011; Federrath et al. 2014; Myers et al. 2014; Offner & Arce 2014; Peters et al. 2014; Kuiper et al. 2015; Offner & Chaban 2017; Li et al. 2018). In this study, we introduce a sub-grid model which – for the first time – focuses on the time-variability of the outflows by mimicking the accretion behaviour of FUor-type stars.

The paper is organized as follows. In Section 2, we describe the computational method, introduce the sub-grid outflow model, and define the simulation setups. In Section 3, we compare episodic and continuous outflow feedback, and discuss the results of our resolution and parameter studies, based on simulations where the initial conditions are spherically symmetric cores in solid-body rotation with $\rho \propto r^{-2}$. In Section 4, we present the results of simulations where the initial conditions are a spherically symmetric turbulent core with density proportional to the density of a Bonnor–Ebert sphere, in particular concentrating on the PV and MV relations. The results are discussed in Section 5, and in Section 6 we summarize our results.

2 COMPUTATIONAL METHODS AND SETUP

2.1 SPH code GANDALF

We use the highly object orientated ‘grad-h’ SPH code GANDALF (Hubber, Rosotti & Booth 2018), which is based on the SPH code SEREN (Hubber et al. 2011). GANDALF offers different integration schemes, and we have chosen the second-order Leapfrog KDK scheme for our simulations. We use hierarchical block time-stepping to reduce the computational cost.

GANDALF can treat the thermodynamics of the gas in several ways, for example with simple isothermal, polytropic, or barotropic equations of state. Here, we invoke the approximate algorithm due to Stamatellos et al. (2007), which uses the density, ρ_i , temperature, $T_{i,s}$, and gravitational potential, Φ_i , of each SPH particle i , to estimate a mean optical depth, which is then used to compute the local heating and cooling rates. The algorithm takes into account the opacity changes due to ice mantle melting and sublimation of dust, and the switch from dust opacity to molecular line opacity; it also captures the changes of specific heat due to dissociation and ionization of H and He.

To minimize the shortcomings of SPH in capturing shocks, we use the artificial viscosity formulation of Morris & Monaghan (1997), complemented by the time-dependent artificial viscosity switch of Cullen & Dehnen (2010).

2.2 Episodic accretion model

Modelling outflow feedback is crucial for star formation simulations, since outflow cavities significantly reduce the amount of gas that can be accreted onto the forming protostar, thus lowering the star formation efficiency (see, e.g. the review by Frank et al. 2014). Self-consistent outflow simulations suffer from the extremely high spatial and temporal resolution required to resolve the jet-launching region. To bypass this problem, we treat the collapse of the core explicitly only up to the sink creation density, $\rho_{\text{SINK}} = 10^{-10} \text{ g cm}^{-3}$; thereafter, we assume that a protostar forms and insert a sink particle of radius $r_{\text{SINK}} \sim 1 \text{ AU}$ (Bate, Bonnell & Price 1995). We use an improved treatment of sink particles, in which SPH particles that are flagged to be assimilated by a sink particle are not assimilated instantaneously, but instead are assimilated smoothly over a few time steps. Consequently, the sink particle's surroundings are not suddenly evacuated, and this improves the hydrodynamics in the vicinity of the sink (Hubber, Walch & Whitworth 2013). In addition, the rate of inflow onto the sink, $dM_{\text{SINK}}/dt|_{\text{INFLOW}}$ is more smoothly varying.

Following Stamatellos, Whitworth & Hubber (2012) we divide the mass of the sink particle, $M_{\text{SINK}}(t)$, into the mass of the central protostar, $M_*(t)$, and the mass of an unresolved inner accretion disc, $M_{\text{IAD}}(t)$,

$$M_*(t) = M_{\text{SINK}}(t) - M_{\text{IAD}}(t). \quad (2)$$

In addition, we keep track of the angular momentum of the unresolved central protostar, $L_*(t)$, and the inner accretion disc (IAD), $L_{\text{IAD}}(t)$,

$$L_*(t) = L_{\text{SINK}}(t) - L_{\text{IAD}}(t). \quad (3)$$

Mass and angular momentum accreted onto the sink particle are first stored in the IAD. In order to treat the episodic accretion from the IAD onto the central protostar, and the resulting accretion luminosity, we use the sub-grid episodic accretion module developed by Stamatellos et al. (2012), based on an analytical description of FUor-type stars due to Zhu et al. (2009a, 2010a), in which episodic accretion is regulated by the interplay between gravitational instability and magneto-rotational instability (MRI).

In the absence of outflow, the rate of growth of the central protostar has just two contributions,

$$\frac{dM_*}{dt} = \frac{dM}{dt}\Big|_{\text{BG}} + \frac{dM}{dt}\Big|_{\text{MRI}}. \quad (4)$$

The first one is the background accretion rate, $dM/dt|_{\text{BG}} = 10^{-7} M_{\odot} \text{ yr}^{-1}$, allowing a small amount of mass to reach the central protostar even if the MRI is not active.

The second contribution, $dM/dt|_{\text{MRI}}$, represents the enhanced accretion rate enabled by the MRI during an outburst. It can exceed $dM/dt|_{\text{BG}}$ by many orders of magnitude, but only during short outbursts of MRI activity. Following Zhu, Hartmann & Gammie (2010b) we assume

$$\frac{dM}{dt}\Big|_{\text{MRI}} = 5 \times 10^{-4} M_{\odot} \text{ yr}^{-1} \left(\frac{\alpha_{\text{MRI}}}{0.1} \right). \quad (5)$$

Here, α_{MRI} is the Shakura–Sunyayev parameter (Shakura & Sunyayev 1973) for the effective disc viscosity due to the MRI. Simulations and observations suggest that $0.01 < \alpha_{\text{MRI}} < 0.4$ (King, Pringle & Livio 2007). We use $\alpha_{\text{MRI}} = 0.1$ as the default value, and vary it between $\alpha_{\text{MRI}} = 0.05$ and $\alpha_{\text{MRI}} = 0.2$. Zhu et al. (2009b, 2010b) estimate

that the duration of an MRI outburst is

$$\Delta t_{\text{MRI}} \approx 0.25 \text{ kyr} \left(\frac{\alpha_{\text{MRI}}}{0.1} \right)^{-1} \left(\frac{M_*(t)}{0.2 M_{\odot}} \right)^{2/3} \left(\frac{dM/dt|_{\text{IAD}}}{10^{-5} M_{\odot} \text{ yr}^{-1}} \right)^{1/9}. \quad (6)$$

Hence, the total mass deposited on the protostar during a typical MRI accretion outburst is of order

$$\begin{aligned} \Delta M_{\text{MRI}}(t) &= \Delta t_{\text{MRI}}(t) \frac{dM}{dt}\Big|_{\text{MRI}} \\ &= 0.13 M_{\odot} \left(\frac{M_*(t)}{0.2 M_{\odot}} \right)^{2/3} \left(\frac{dM/dt|_{\text{IAD}}}{10^{-5} M_{\odot} \text{ yr}^{-1}} \right)^{1/9}. \end{aligned} \quad (7)$$

Stamatellos et al. (2012) assume that, as soon as the mass of the inner accretion disc exceeds the mass for a typical MRI event, the temperature of the inner accretion disc has become high enough for thermal ionization to activate the MRI. Hence, an outburst is triggered if

$$M_{\text{IAD}}(t) > \Delta M_{\text{MRI}}(t). \quad (8)$$

In the absence of outflow, the rate at which the IAD grows is given by

$$\frac{dM_{\text{IAD}}}{dt} = \frac{dM_{\text{SINK}}}{dt}\Big|_{\text{INFLOW}} - \frac{dM}{dt}\Big|_{\text{BG}} - \frac{dM}{dt}\Big|_{\text{MRI}}. \quad (9)$$

In addition, we impose a lower limit on the mass of the IAD, $M_{\text{IAD}}(t) > M_{\text{MIN}} = 0.025 M_{\odot}$, to ensure that the direction of the associated angular momentum, L_{IAD} , does not vary too much from one time-step to the next.

2.3 Outflow feedback model

Observations and theoretical predictions suggest that a fraction $f_{\text{EJECT}} \sim 0.1 - 0.4$ of the gas accreted by a protostar is ejected in bipolar outflows (Crowell, Hartmann & Avrett 1987; Shu et al. 1988; Pelletier & Pudritz 1992; Calvet, Hartmann & Kenyon 1993; Hartmann & Calvet 1995; but see also the review by Bally 2016). We set $f_{\text{EJECT}} = 0.1$ as the default value. To determine the rate of outflow at the current time t , following a time-step Δt , we first compute the mass available for outflow,

$$\Delta M_{\text{AVAIL}}(t) = \Delta M_{\text{AVAIL}}(t - \Delta t) + f_{\text{EJECT}} [M_*(t) - M_*(t - \Delta t)]. \quad (10)$$

If the outflow model is used in combination with the episodic accretion model (see Section 2.2), particles are only ejected if the MRI is active (equation (8)). Particles that would be ejected during a quiescent phase make up only a few per cent compared to the outburst and are thus ejected with the particles of the outburst to improve the hydrodynamical behaviour of the outflow. If $\Delta M_{\text{AVAIL}}(t) > 4m_{\text{SPH}}$ we inject $4N(t)$ SPH particles, where

$$N(t) = \text{flooR} \left(\frac{\Delta M_{\text{AVAIL}}(t)}{4m_{\text{SPH}}} \right), \quad (11)$$

and reduce $\Delta M_{\text{AVAIL}}(t)$ accordingly,

$$\Delta M_{\text{AVAIL}}(t) \rightarrow \Delta M_{\text{AVAIL}}(t) - 4N(t)m_{\text{SPH}}. \quad (12)$$

In Equation (11), the `flooR()` operation returns the next lower natural number, and m_{SPH} is the mass of a single SPH particle.

The SPH particles driving the outflow are injected in a cone around the angular momentum axis of the IAD, which is defined by the unit vector $\hat{e}_{\text{IAD}}(t) = L_{\text{IAD}}(t)/|L_{\text{IAD}}(t)|$. They are injected in groups of four (labelled $n = 1, 2, 3, 4$), simultaneously and symmetrically (see below), first in order to ensure conservation

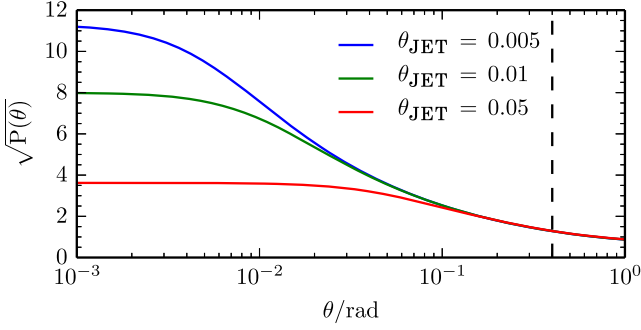


Figure 1. The outflow density distribution, $\sqrt{P(\theta)}$, giving the probability that a particle is injected at polar angle θ (equation (14)), for three different effective opening angles θ_{JET} . The dotted line shows the default value for the maximum polar angle, $\theta_{\text{WIND}} = 0.4$.

of linear momentum, and secondly in order to cancel unwanted angular momentum (i.e. angular momentum that is not parallel or antiparallel to $\hat{e}_{\text{IAD}}(t)$). In a spherical–polar coordinate system, where the sink particle is at the origin and the polar axis is parallel to $\hat{e}_{\text{IAD}}(t)$, the position of the first injected SPH particle in a group of four is given by $\mathbf{r}_1'' = (r, \theta, \phi)$, with radius $r \in [r_{\text{MIN}}, r_{\text{MIN}} + 2 \text{AU}]$, polar angle $\theta \in [0, \theta_{\text{WIND}}]$, and azimuthal angle $\phi \in [0, 2\pi]$. (All position vectors and velocity vectors in this coordinate system are distinguished by double primes, e.g. \mathbf{r}_1'' .)

r_{MIN} is a purely numerical parameter, giving the smallest radius from which the SPH particles representing the outflow can be injected without incurring prohibitively short time-steps. It has default value $r_{\text{MIN}} = 10 \text{AU}$ (i.e. $\sim 10r_{\text{SINK}}$; see Section 3.3.5) and must be distinguished from r_{LAUNCH} , which is the much smaller – and unresolved – radius from which the outflow is assumed to originate (see below). θ_{WIND} is the opening angle of the wide-angle wind, with default value $\theta_{\text{WIND}} = 0.4 \text{rad}$ (see Section 3.3.1). r and ϕ are drawn randomly from uniform distributions in their respective ranges, but the distribution of θ values is more complicated.

The distribution of θ determines the relative mass fractions injected in the jet- and wind-components of the outflow. Like Cunningham et al. (2011), Offner & Arce (2014), and Kuiper et al. (2015), we use the force distribution derived by Matzner & McKee (1999) for a hydrodynamical outflow at scales far larger than the launching region,

$$P(\theta) \propto r^2 \rho v^2 \simeq \left[\ln \left(\frac{2}{\theta_{\text{JET}}} \right) (\sin^2(\theta) + \theta_{\text{JET}}^2) \right]^{-1}. \quad (13)$$

Here, θ_{JET} is the jet opening angle, i.e. it determines how collimated the jet component is. We assume that the density and velocity distributions at the base of the outflow satisfy

$$\rho_{\text{INJECT}}(\theta) \propto P^{1/2}(\theta), \quad (14)$$

$$|v_{\text{INJECT}}(\theta)| \propto P^{1/4}(\theta). \quad (15)$$

Therefore, we draw θ randomly from the distribution $P^{1/2}(\theta)$ in the range $\theta \in [0, \theta_{\text{WIND}}]$. This distribution is illustrated in Fig. 1 for representative values of θ_{JET} .

The shape of the outflow is controlled by θ_{JET} and θ_{WIND} . Decreasing θ_{JET} leads to a more collimated outflow; more particles are injected close to the outflow axis, and they are injected with

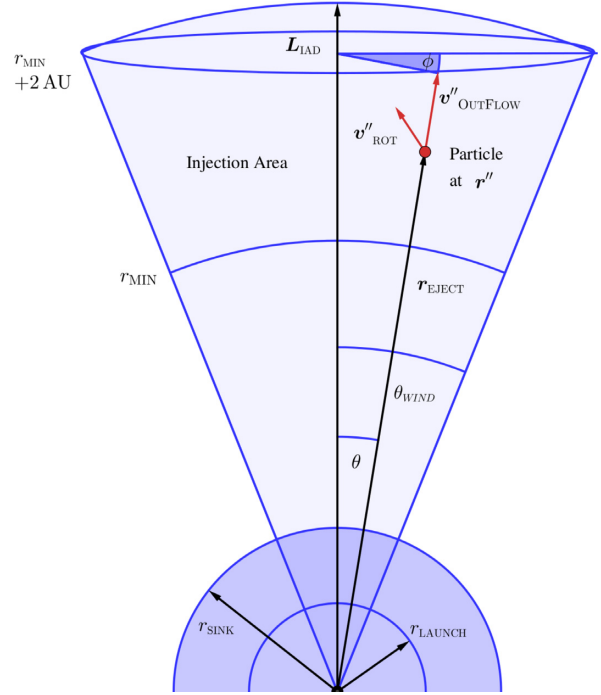


Figure 2. Sketch of the outflow configuration, in the spherical polar coordinate system where the sink particle is at rest at the origin and the polar axis is parallel to \mathbf{L}_{IAD} .

higher velocities, making the jet component stronger with respect to the low-velocity wind component (see Section 3.3.3). Increasing θ_{WIND} leads to a wider outflow, affecting a larger volume, with more particles being injected in the low-velocity wind component (see Section 3.3.1).

The outflow velocity is scaled to the Keplerian velocity at r_{LAUNCH} , i.e. $(GM_*(t)/r_{\text{LAUNCH}})^{1/2}$. Since we do not treat the evolution of the stellar radius (cf. Offner et al. 2009), r_{LAUNCH} is a free parameter, with the default value $r_{\text{LAUNCH}} = 0.07 \text{AU}$. We emphasize that $r_{\text{LAUNCH}} \ll r_{\text{SINK}} \ll r_{\text{MIN}}$; in other words, the SPH particles representing the outflow are injected much further out ($\geq r_{\text{MIN}}$) than where the outflow is assumed to originate (r_{LAUNCH}). The outflow velocity, $\mathbf{v}''_{\text{OUT1}}$, points in the same direction as the position vector \mathbf{r}_1'' (Fig. 2), i.e.

$$\mathbf{v}''_{\text{OUT1}} = \left(\frac{GM_*(t)}{r_{\text{LAUNCH}}} \right)^{1/2} P^{1/4}(\theta) \frac{\mathbf{r}_1''}{|\mathbf{r}_1''|}, \quad (16)$$

where $P(\theta)$ is the force distribution (see equation (13)).

We add to $\mathbf{v}''_{\text{OUT1}}$ a rotational velocity component, $\mathbf{v}''_{\text{ROT1}}$, which removes angular momentum from the IAD (see Fig. 2). About 90 per cent of the associated angular momentum must be removed from the gas that reaches the protostar, so that its rotation speed matches observations and stays below the break-up limit (Herbst et al. 2007). However, the physical mechanisms by which angular momentum is redistributed in a protostellar core are not fully understood and are not resolved in our simulations. The amount of angular momentum carried away by each SPH particle in the outflow is given by

$$\ell_{\text{SPH}}(t) = f_{\text{AngMom}} |\mathbf{L}_{\text{IAD}}(t)| \frac{m_{\text{SPH}}}{\Delta M_{\text{MRI}}(t)}, \quad (17)$$

where $f_{\text{AngMom}} = 0.9$. This ensures that the angular momentum of the protostar is a few per cent of the break-up angular momentum for a $10 R_{\odot}$ protostar of the same mass. The rotational velocity component in the outflow (e.g. Launhardt et al. 2009; Chen et al. 2016; Lee et al. 2017; Tabone et al. 2017) is then given by

$$\mathbf{v}''_{\text{ROT},1} = \mathbf{r}'_1 \times \boldsymbol{\omega}(t), \quad (18)$$

with

$$\boldsymbol{\omega}(t) = \frac{\ell_{\text{SPH}}(t)}{m_{\text{SPH}} \sin^2(\theta) r^2} \hat{\mathbf{e}}_{\text{IAD}}(t), \quad (19)$$

and the additional constraint that

$$v''_{\text{ROT},1} \leq \left(\frac{GM_*(t)}{r_{\text{LAUNCH}}} \right)^{1/2}, \quad (20)$$

to ensure that the outflow velocity field is not dominated by rotation. If the resulting angular momentum that can be carried away by the outflow is smaller than L_{IAD} , the rest remains in the IAD and is available for the next time-step. The total velocity of the injected SPH particle is

$$\mathbf{v}''_1 = \mathbf{v}''_{\text{OUT},1} + \mathbf{v}''_{\text{ROT},1}. \quad (21)$$

To compensate for the fact that part of the injected angular momentum is not parallel to $\hat{\mathbf{e}}_{\text{IAD}}(t)$, we inject a second SPH particle at position $\mathbf{r}''_2 = (r, \theta, \phi + \pi)$, and we compute its velocity, analogously to the first particle, i.e.

$$\mathbf{v}''_{\text{OUT},2} = \left(\frac{GM_*(t)}{r_{\text{LAUNCH}}} \right)^{1/2} P^{1/4}(\theta) \frac{\mathbf{r}''_2}{|\mathbf{r}''_2|}, \quad (22)$$

$$\mathbf{v}''_{\text{ROT},2} = \mathbf{r}''_2 \times \boldsymbol{\omega}(t), \quad (23)$$

$$\mathbf{v}''_2 = \mathbf{v}''_{\text{OUT},2} + \mathbf{v}''_{\text{ROT},2}; \quad (24)$$

otherwise, angular momentum is not conserved (Hubber et al. 2013).

The positions and velocities of particles 1 and 2 are then rotated, using a fast quaternion rotation scheme, into a frame in which the coordinate axes are parallel to those in the simulation frame, but with the origin still at the sink particle i.e. $\mathbf{r}''_n \rightarrow \mathbf{r}'_n$ and $\mathbf{v}''_n \rightarrow \mathbf{v}'_n$, for $n = 1$ and 2 . (All position vectors and velocity vectors in this frame are distinguished by single primes, e.g. \mathbf{r}'_n .)

To obtain a bipolar outflow, and ensure conservation of linear momentum, we inject two further SPH particles, at positions $\mathbf{r}'_3 = -\mathbf{r}'_1$ and $\mathbf{r}'_4 = -\mathbf{r}'_2$, and with velocities $\mathbf{v}'_3 = -\mathbf{v}'_1$ and $\mathbf{v}'_4 = -\mathbf{v}'_2$. The net angular and linear momenta carried away by the set of four particles are then

$$|\Delta \mathbf{L}_{\text{TOTAL}}(t)| = m_{\text{SPH}} \left| \sum_{n=1}^{n=4} \{ \mathbf{r}'_n \cdot \mathbf{v}'_n \} \right| \leq 4 \ell_{\text{SPH}}(t), \quad (25)$$

$$|\Delta \mathbf{p}_{\text{TOTAL}}(t)| = m_{\text{SPH}} \sum_{n=1}^{n=4} \{ \mathbf{v}'_n \} = 0. \quad (26)$$

Finally, the particles are shifted into the simulation frame, with final positions and velocities

$$\mathbf{r}_n = \mathbf{r}'_n + \mathbf{r}_{\text{SINK}}, \quad (27)$$

$$\mathbf{v}_n = \mathbf{v}'_n + \mathbf{v}_{\text{SINK}}. \quad (28)$$

Table 1. The model parameters, with their default values, and the ranges over which we vary them in Section 3.3.

Model parameter	Default value	Range
r_{MIN}	20 AU	10 AU to 30 AU
r_{LAUNCH}	0.07 AU	0.047 AU to 0.140 AU
θ_{WIND}	0.4 rad	0.2 rad to 0.4 rad
θ_{JET}	0.01	0.005 to 0.05
f_{EJECT}	0.1	0.05 to 0.2
f_{AngMom}	0.9	—
M_{MIN}	0.025 M_{\odot}	—

If more than four particles are injected ($N(t) > 1$, equation 11), this process is repeated until the positions and velocities of all the new SPH particles in the outflow have been computed. Finally, if SPH particles have been injected ($N(t) > 0$), the masses and angular momenta of the sink particle and its two constituent parts (the central protostar and the IAD) must be adjusted, according to

$$M_{\text{SINK}}(t) \rightarrow M_{\text{SINK}}(t) - 4N(t)m_{\text{SPH}}, \quad (29)$$

$$M_*(t) \rightarrow M_*(t) - 4N(t)m_{\text{SPH}}, \quad (30)$$

$$M_{\text{IAD}}(t) = M_{\text{SINK}}(t) - M_*(t), \quad (31)$$

$$\mathbf{L}_{\text{SINK}}(t) \rightarrow \mathbf{L}_{\text{SINK}}(t) - \Delta \mathbf{L}_{\text{TOTAL}}(t), \quad (32)$$

$$\mathbf{L}_*(t) \rightarrow \mathbf{L}_*(t) + \frac{(1 - f_{\text{AngMom}})}{f_{\text{AngMom}}} \Delta \mathbf{L}_{\text{TOTAL}}(t), \quad (33)$$

$$\mathbf{L}_{\text{IAD}}(t) = \mathbf{L}_{\text{SINK}}(t) - \mathbf{L}_*(t). \quad (34)$$

The model parameters are summarized in Table 1.

2.4 Simulation setup

In all simulations, the initial conditions are spherically symmetric, and consist of a dense core, embedded in a low-density envelope. In the following, we consider two different initial density profiles.

For the simulations presented in Section 3 (hereafter the *Rotating Setup*), we construct the initial core from a singular isothermal sphere (SIS; Shu 1977), i.e. $\rho_{\text{SIS}}(r) = c_s^2/2\pi G r^2$, truncated at $R_{\text{CORE}} = 0.015$ pc; the mass of the truncated SIS is $M = 2c_s^2 R_{\text{CORE}}/G = 0.25 M_{\odot}$, and the density at its boundary is $\rho_{\text{SIS}}(R_{\text{CORE}}) = 4.0 \times 10^{-19} \text{ g cm}^{-3}$. Next, we increase the density of the truncated SIS by a factor of 4, so that its mass is $M_{\text{CORE}} = 1 M_{\odot}$, and it is no longer supported against self-gravity. Finally, we set it in solid body rotation with angular frequency $\omega = 1.35 \times 10^{-12} \text{ s}^{-1}$, so that it collapses to form an accretion disc with radius of order ~ 150 AU.

For the simulations presented in Section 4 (hereafter the *Turbulent Setup*), we construct the initial core from a Bonnor–Ebert sphere (BES; Bonnor 1956; Ebert 1957), since this may be a more realistic density profile than an SIS (Whitworth et al. 1996). The BES has central density $\rho_{\text{CENTRAL}} = 5 \times 10^{-19} \text{ g cm}^{-3}$; it is truncated at $R_{\text{CORE}} = 0.058$ pc, and the mass inside this radius is $1.35 M_{\odot}$. Next, we increase the density of the truncated BES by a factor of 2, so

that its mass is $M_{\text{CORE}} = 2.70 M_{\odot}$, and it is no longer in hydrostatic equilibrium. Finally, we add a turbulent velocity field with the virial ratio

$$\alpha_{\text{VIRIAL}} = \frac{2(E_{\text{TURB}} + E_{\text{THERM}})}{E_{\text{GRAV}}} = 0.85 \quad (35)$$

and the power spectrum

$$P_{\lambda} \propto \lambda^4 \text{ for } \lambda \in [\lambda_{\text{MIN}}, \lambda_{\text{MAX}}], \quad (36)$$

similar to Walch et al. (2010). The scale of the largest, thus the most energetic, turbulent mode is set to $\lambda_{\text{MAX}} = 2 R_{\text{CORE}}$ (Walch, Whitworth & Girichidis 2012). The scale of the smallest mode is $\lambda_{\text{MIN}} = 1/64 R_{\text{CORE}}$.

The masses and radii of these cores resemble typical pre-stellar cores that will preferentially form low-mass protostars massive enough to launch outflows that have a significant impact on the core and envelope (Motte et al. 2001; André et al. 2014).

The dense cores are embedded in an envelope with low and uniform density, $\rho_{\text{ENVELOPE}} = 10^{-23} \text{ g cm}^{-3}$. The outer radius of the envelope is set to $R_{\text{ENVELOPE}} = 1 \text{ pc}$, in order to study multiple outflow bullets propagating simultaneously through the envelope. In the Rotating Setup, the mass of the envelope (between R_{CORE} and R_{ENVELOPE}) is $M_{\text{ENVELOPE}} = 0.62 M_{\odot}$, and hence $M_{\text{TOTAL}} = 1.62 M_{\odot}$. In the Turbulent Setup, the mass of the envelope is $M_{\text{ENVELOPE}} = 1.20 M_{\odot}$, and hence $M_{\text{TOTAL}} = 3.90 M_{\odot}$. In both setups, the initial temperature is $T = 10 \text{ K}$ everywhere, and the corresponding isothermal sound speed is $c_s = 0.19 \text{ km s}^{-1}$.

3 THE ROTATING SETUP

In order to illustrate the main features of core evolution, Fig. 3 shows the column density from Run 8 with the Rotating Setup (i.e. EPISODIC:400, see Table 2), at three different times. The first panel, at 2.4 kyr, shows how the first outflow event carves out a narrow cavity. In the second panel, at 4 kyr, the outflows break out of the parental dense core. In the third panel, at 16 kyr, one sees multiple bullets propagating in a bipolar outflow. Since the outflow becomes longer as it evolves, the panels in Fig. 3 have different scales, as shown by the scale bars.

In the following, we explore the effects of changing the numerical parameters (Section 3.1); of switching from episodic to continuous outflows (Section 3.2); and of changing the model parameters (Section 3.3). The parameters for all the runs are given in Table 2. For each run, only one parameter is changed from its default value; the default value is the value for the fiducial case (Run 6, see Table 2).

We are particularly concerned with the amount of mass and momentum escaping from the core and its envelope. An SPH particle, n , at radius r_n (measured from the centre of mass), is deemed to have escaped if its radial velocity, $v_{\text{RAD},n}$, exceeds a notional escape velocity, i.e.

$$v_{\text{RAD},n} > v_{\text{ESCAPE}} = \left(\frac{2GM_{\text{TOTAL}}}{r_n} \right)^{1/2}. \quad (37)$$

A typical value for the escape velocity at $r = 0.1 \text{ pc}$ is $v_{\text{ESCAPE}} \sim 0.37 \text{ km s}^{-1}$ (where we recall that, for the Rotating Setup, $M_{\text{TOTAL}} = 1.62 M_{\odot}$).

Specifically, we evaluate, as a function of time, (i) the mass of the sink, $M_{\text{SINK}}(t)$; (ii) the total mass carried away by *all* the escaping SPH particles (i.e. those that have been injected in groups of four, plus ambient SPH particles that have become entrained in the flow),

i.e.

$$M_{\text{TOTAL}}(t) = \sum_{n=1}^{n=N_{\text{TOTAL}}(t)} \{m_n\}, \quad (38)$$

where $N_{\text{TOTAL}}(t)$ is the total number of SPH particles to date that satisfy equation (37); (iii) the total momentum carried away by the escaping SPH particles *in the outflow* (i.e. just those SPH particles that have been injected in groups of four following an accretion outburst),

$$P_{\text{OUTFLOW}}(t) = \sum_{n=1}^{n=N_{\text{OUTFLOW}}(t)} \{m_n v_{\text{RAD},n}\}, \quad (39)$$

where $N_{\text{OUTFLOW}}(t)$ is the total number of injected SPH particles that satisfy equation (37); and (iv) the total momentum carried away by *all* the escaping SPH particles, i.e.

$$P_{\text{TOTAL}}(t) = \sum_{n=1}^{n=N_{\text{TOTAL}}(t)} \{m_n v_{\text{RAD},n}\}. \quad (40)$$

3.1 Varying the numerical parameters

The Outflow Feedback Model involves two purely *numerical* parameters, the number of SPH particles representing the core, $\mathcal{N}_{\text{CORE}}$, and the density above which sink particles are created, ρ_{SINK} . In this section, we explore how the results change when one or other of these numerical parameters is changed from its default value (i.e. Run 6: $\mathcal{N}_{\text{CORE}} = 10^5$, $\rho_{\text{SINK}} = 10^{-10} \text{ g cm}^{-3}$). In each of Runs 4 through 10, (see Table 2), all the *physical* parameters are held at their default values: $\theta_{\text{WIND}} = 0.4 \text{ rad}$, $r_{\text{LAUNCH}} = 0.07 \text{ AU}$, $\theta_{\text{JET}} = 0.01 \text{ rad}$, $f_{\text{EJECT}} = 0.1$, $r_{\text{MIN}} = 20 \text{ AU}$ and $\alpha_{\text{MRI}} = 0.1$.

3.1.1 Mass resolution

In Runs 4 through 8 (Table 2), the sink creation density is held constant (at $\rho_{\text{SINK}} = 10^{-10} \text{ g cm}^{-3}$) and the number of SPH particles in the core increases from $\mathcal{N}_{\text{CORE}} \simeq 2.5 \times 10^4$ (Run 4) to $\mathcal{N}_{\text{CORE}} \simeq 4 \times 10^5$ (Run 8). Consequently, the mass of an SPH particle, $m_{\text{SPH}} = M_{\odot}/\mathcal{N}_{\text{CORE}}$, decreases along this sequence from $m_{\text{SPH}} \simeq 4 \times 10^{-5} M_{\odot}$ (Run 4) to $m_{\text{SPH}} \simeq 2.5 \times 10^{-6} M_{\odot}$ (Run 8). The minimum mass that can be resolved is $M_{\text{RES}} \sim 100 m_{\text{SPH}}$, and therefore decreases from $M_{\text{RES}} \sim 4 \times 10^{-3} M_{\odot}$ (Run 4) to $M_{\text{RES}} \sim 2.5 \times 10^{-4} M_{\odot}$ (Run 8).

Fig. 4 shows the evolution of $M_{\text{SINK}}(t)$ and $M_{\text{TOTAL}}(t)$ (top left-hand panel) and $P_{\text{OUTFLOW}}(t)$ and $P_{\text{TOTAL}}(t)$ (bottom left-hand panel), obtained with different $\mathcal{N}_{\text{CORE}}$. There are some systematic changes with increasing $\mathcal{N}_{\text{CORE}}$, and the results are therefore not strictly converged, even at the highest $\mathcal{N}_{\text{CORE}}$; in particular, the downtime between outbursts tends to be somewhat shorter with higher $\mathcal{N}_{\text{CORE}}$, especially at late times.

However, the overall behaviour is not strongly dependent on $\mathcal{N}_{\text{CORE}}$. (i) At all times, the mass of the sink particle, $M_{\text{SINK}}(t)$ varies by less than a few per cent (see also Hubber et al. 2013). (ii) At late times ($t \gtrsim 30 \text{ kyr}$), the total mass ($M_{\text{TOTAL}}(t)$) and momentum ($P_{\text{TOTAL}}(t)$) escaping from the core and its envelope, vary with $\mathcal{N}_{\text{CORE}}$ (which changes by a factor of 8) by at most 20 per cent. (iii) In all the simulations, the delay between successive outburst events increases with time; this is because the mass required to trigger an outburst ($\Delta M_{\text{MRI}}(t)$, equation (7)) increases, and the rate at which the IAD grows (dM_{IAD}/dt) decreases, as the inflow rate from the outer parts of the core declines.

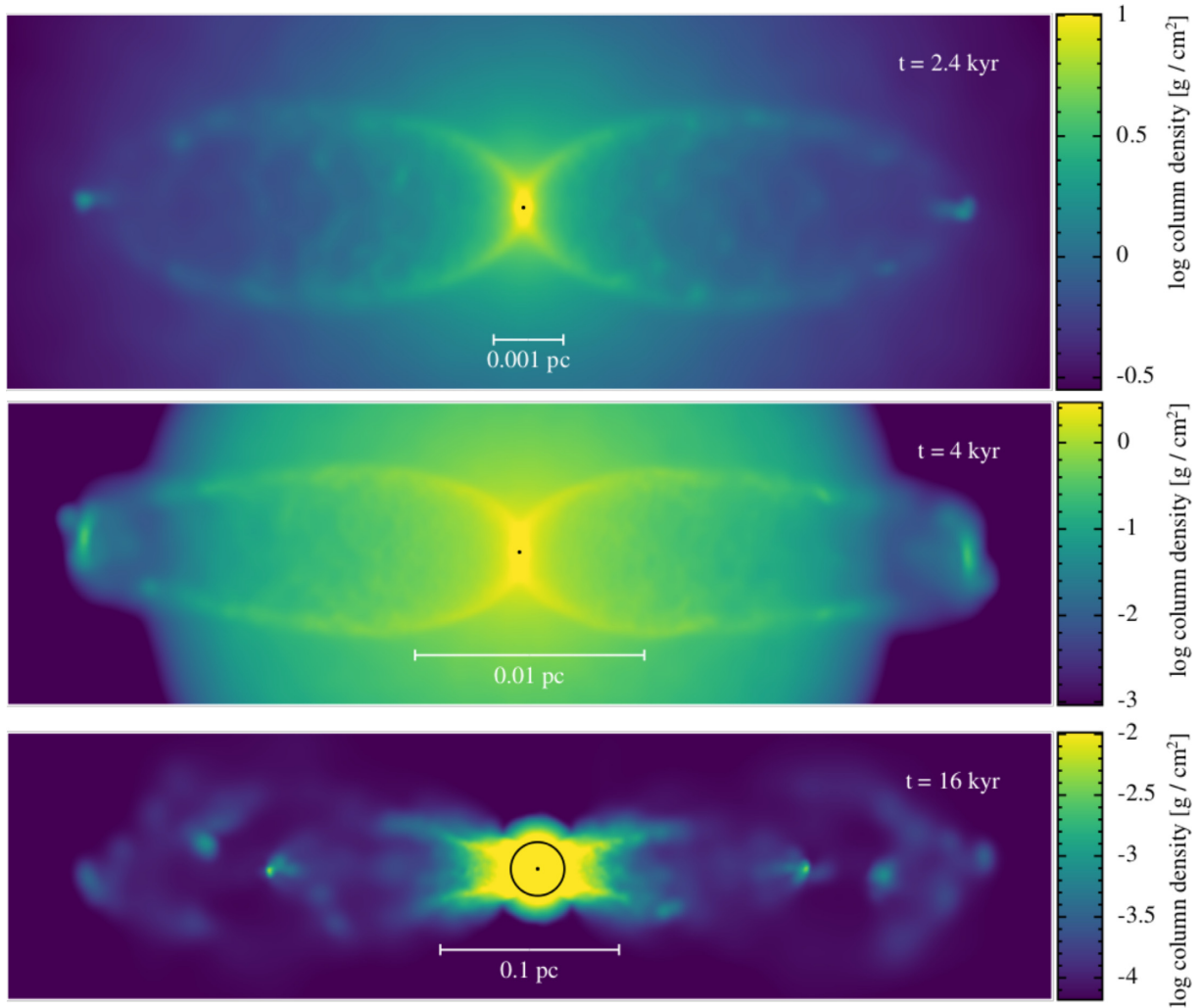


Figure 3. False-colour images of the column-density in run EPISODIC:400 at times $t = 2.4$ kyr, $t = 4$ kyr and $t = 16$ kyr. The spatial scale increases from top to bottom, and the circle in the bottom panel shows the initial radius of the dense core (0.015 pc). The first panel shows the outflow cavity shortly after the first outflow event. In the second panel, the outflow breaks out of the dense core. Multiple bullets forming a chain of Herbig–Haro-like objects are seen in the third panel.

3.1.2 Sink creation

In Runs 6, 9 and 10 (see Table 2), the number of SPH particles in the core is held constant (at $\mathcal{N}_{\text{CORE}} = 10^5$; hence $m_{\text{SPH}} = 10^{-5} M_{\odot}$ and $M_{\text{RES}} = 10^{-3} M_{\odot}$) and the sink creation density is decreased from $\rho_{\text{SINK}} = 10^{-10} \text{ g cm}^{-3}$ (Run 6) through $\rho_{\text{SINK}} = 10^{-11} \text{ g cm}^{-3}$ (Run 9) to $\rho_{\text{SINK}} = 10^{-12} \text{ g cm}^{-3}$ (Run 10). Along this sequence, the sink radius increases from $r_{\text{SINK}} = 0.9 \text{ AU}$ (Run 6) through $r_{\text{SINK}} = 2.0 \text{ AU}$ (Run 9) to $r_{\text{SINK}} = 4.3 \text{ AU}$ (Run 10).

Fig. 4 shows the evolution of $M_{\text{SINK}}(t)$ and $M_{\text{TOTAL}}(t)$ (top right-hand panel), and $P_{\text{OUTFLOW}}(t)$ and $P_{\text{TOTAL}}(t)$ (bottom right-hand panel), obtained with different ρ_{SINK} . There are some systematic changes with increasing ρ_{SINK} , and the results are therefore not strictly converged, even at the highest ρ_{SINK} . In particular, the downtime between outbursts is longer with lower ρ_{SINK} . However, the overall behaviour is not strongly dependent on ρ_{SINK} . (i) At all times, the mass of the sink particle, $M_{\text{SINK}}(t)$ varies by less than a few per cent. (ii) In all the simulations, the downtime between successive outburst events increases with time. (iii) At late times ($t \gtrsim 30$ kyr), as ρ_{SINK} changes by a factor of 100, the total mass

escaping from the core and its envelope, $M_{\text{TOTAL}}(t)$, varies by at most 10 per cent; and the total momentum escaping, $P_{\text{TOTAL}}(t)$, by at most 20 per cent.

3.1.3 Synopsis

Low $\mathcal{N}_{\text{CORE}}$ means not having to follow so many SPH particles (but at the price of coarser mass resolution), and low ρ_{SINK} means not having to follow the SPH particles to such high densities, and hence with such short timesteps (but at the price of excising the detailed dynamics at these high densities). On both counts this reduces computing requirements. Since our outburst model produces approximately converged results with low $\mathcal{N}_{\text{CORE}}$ and low ρ_{SINK} – modulo slightly longer downtimes between outburst events – we conclude that it can be used in larger scale simulations of star formation (e.g. Clarke et al. 2017), where the computing requirements with higher $\mathcal{N}_{\text{CORE}}$ and/or higher $\rho_{\text{SINK}} = 10^{-10} \text{ g cm}^{-3}$ might not be feasible.

Table 2. Parameters for the runs performed with the Rotating Setup (Section 2.4). Reading left to right, the columns give the run number, the run ID, the feedback mechanism, the number of particles in the core ($\mathcal{N}_{\text{CORE}}$), the sink formation density (ρ_{SINK}), the wind opening angle (θ_{WIND}), the launching radius (r_{LAUNCH}), the jet opening angle (θ_{JET}), the fraction of the gas accreted by a protostar that is ejected in bipolar outflows (f_{EJECT}), the minimum radius at which the SPH particles representing the outflow are injected (r_{MIN}), and the Shakura–Sunyaev viscosity parameter for MRI viscosity (α_{MRI}).

#	Run	Feedback	$\frac{\mathcal{N}_{\text{CORE}}}{10^3}$	$\frac{\rho_{\text{SINK}}}{\text{g cm}^{-3}}$	$\frac{\theta_{\text{WIND}}}{\text{radian}}$	$\frac{r_{\text{LAUNCH}}}{\text{AU}}$	$\frac{\theta_{\text{JET}}}{\text{radian}}$	f_{EJECT}	$\frac{r_{\text{MIN}}}{\text{AU}}$	α_{MRI}
1	CONT:100	Continuous	100	10^{-10}	0.4	0.07	0.01	0.1	20	0.1
2	CONT:200	Continuous	200	10^{-10}	0.4	0.07	0.01	0.1	20	0.1
3	CONT:400	Continuous	400	10^{-10}	0.4	0.07	0.01	0.1	20	0.1
4	EPISODIC:25	Episodic	25	10^{-10}	0.4	0.07	0.01	0.1	20	0.1
5	EPISODIC:50	Episodic	50	10^{-10}	0.4	0.07	0.01	0.1	20	0.1
6	EPISODIC:100	Episodic	100	10^{-10}	0.4	0.07	0.01	0.1	20	0.1
7	EPISODIC:200	Episodic	200	10^{-10}	0.4	0.07	0.01	0.1	20	0.1
8	EPISODIC:400	Episodic	400	10^{-10}	0.4	0.07	0.01	0.1	20	0.1
9	RHO SINK:11	Episodic	100	10^{-11}	0.4	0.07	0.01	0.1	20	0.1
10	RHO SINK:12	Episodic	100	10^{-12}	0.4	0.07	0.01	0.1	20	0.1
11	THETA WIND:0.6	Episodic	100	10^{-10}	0.6	0.07	0.01	0.1	20	0.1
12	THETA WIND:0.2	Episodic	100	10^{-10}	0.2	0.07	0.01	0.1	20	0.1
13	RLAUNCH:14	Episodic	100	10^{-10}	0.4	0.14	0.01	0.1	20	0.1
14	RLAUNCH:047	Episodic	100	10^{-10}	0.4	0.047	0.01	0.1	20	0.1
15	THETA JET:0.05	Episodic	100	10^{-10}	0.4	0.07	0.05	0.1	20	0.1
16	THETA JET:0.005	Episodic	100	10^{-10}	0.4	0.07	0.005	0.1	20	0.1
17	FEJECT:0.2	Episodic	100	10^{-10}	0.4	0.07	0.01	0.2	20	0.1
18	FEJECT:0.05	Episodic	100	10^{-10}	0.4	0.07	0.01	0.05	20	0.1
19	RMIN:30	Episodic	100	10^{-10}	0.4	0.07	0.01	0.1	30	0.1
20	RMIN:10	Episodic	100	10^{-10}	0.4	0.07	0.01	0.1	10	0.1
21	ALPHAMRI:0.2	Episodic	100	10^{-10}	0.4	0.07	0.01	0.1	20	0.2
22	ALPHAMRI:0.05	Episodic	100	10^{-10}	0.4	0.07	0.01	0.1	20	0.05

3.2 Comparison between episodic and continuous outflows

Here, we compare and contrast episodic outflow feedback with continuous outflow feedback. The continuous feedback runs (Runs 1–3, Table 2) equate the accretion rate onto the protostar (dM_*/dt) to the accretion rate onto the sink particle (dM_{SINK}/dt) – rather than using the sub-grid model of Stamatellos, Hubber & Whitworth (2011a) and obtaining episodic accretion rate onto the protostar; we reiterate that in the episodic approach particles are only ejected during an outburst (see Section 2.3). The continuous feedback runs use $\mathcal{N}_{\text{CORE}} \simeq 10^5$ (Run 1), $\mathcal{N}_{\text{CORE}} \simeq 2 \times 10^5$ (Run 2), and $\mathcal{N}_{\text{CORE}} \simeq 4 \times 10^5$ (Run 3); all other parameters have their default values. The results are compared with the episodic accretion Runs 6 and 7.

Fig. 5 shows the evolution of $M_{\text{SINK}}(t)$ and $M_{\text{TOTAL}}(t)$ (top panel), and $P_{\text{OUTFLOW}}(t)$ and $P_{\text{TOTAL}}(t)$ (bottom panel), obtained with continuous and episodic outflows. There is no evidence that the runs with continuous outflows have converged with increasing $\mathcal{N}_{\text{CORE}}$ – particularly as regards the momentum carried away from the core (blue, , and black lines on the bottom panel of Fig. 5) – and therefore we cannot safely draw any conclusions regarding the physics of continuous outflows. The reason for non-convergence is that the continuous outflows are not properly resolved.

To be properly resolved, the SPH particles near the axis of the outflow must have neighbour-lists which contain exclusively SPH particles that are also in the outflow (and *all* SPH particles in the outflow must have neighbour-lists which contain at least a significant fraction of SPH particles that are also in the outflow). In other words, the SPH particles in the outflow must interact hydrodynamically with one another. With continuous outflow, the rate at which outflow SPH particles are launched may be so low that this requirement is not met; successively ejected outflow SPH particles may be too far apart. The SPH particles in the outflow will only interact hydrodynamically with one another if they have very low-mass, and

therefore are very numerous, specifically

$$m_{\text{SPH}} < \frac{\dot{M}_* f_{\text{EJECT}} (4\pi/3) r_{\text{MIN}}}{4 \bar{\mathcal{N}}_{\text{NEIB}} \pi \theta_{\text{JET}}^2 v_{\text{LAUNCH}}} \quad (41)$$

$$< 7 \times 10^{-6} M_{\odot} \left(\frac{\dot{M}_*}{10^{-6} M_{\odot} \text{ yr}^{-1}} \right) \left(\frac{v_{\text{LAUNCH}}}{100 \text{ km s}^{-1}} \right)^{-1}. \quad (42)$$

To obtain the second expression, we have substituted the default values for $f_{\text{EJECT}} = 0.1$, $r_{\text{MIN}} = 20 \text{ AU}$, and $\theta_{\text{JET}} = 0.01 \text{ rad}$. The factor 4 in the denominator derives from the fact that we launch outflow SPH particles in groups of four. $\bar{\mathcal{N}}_{\text{NEIB}}$ is the mean number of neighbours, and we have substituted $\bar{\mathcal{N}}_{\text{NEIB}} = 50$. In the runs with continuous outflow, \dot{M}_* is usually much smaller than $10^{-6} M_{\odot} \text{ yr}^{-1}$, and the launch speed, v_{LAUNCH} is usually $\gtrsim 100 \text{ km s}^{-1}$. Consequently, convergence requires $\mathcal{N}_{\text{CORE}} \gtrsim 10^6$ SPH particles per M_{\odot} .

A further issue affecting the runs with continuous outflow is that the high velocity of the launched SPH particles greatly reduces the time-step for these particles and for all those with which they interact, even indirectly – in particular, those that get entrained in the outflow early on. Even though the code uses individual particle time steps, many particles have short time steps, throughout the simulation, and hence the computing requirements are very demanding. In contrast, the runs with episodic outflow only require these short timesteps for brief periods during and immediately after an outburst.

3.3 Varying the physical parameters

The Outflow Feedback Model involves six physical parameters, and their values are poorly constrained by observation or theory. In this section, we explore how the results change when these parameters are increased or decreased from their default values (i.e. those in the fiducial Run 6, EPISODIC:100: $\theta_{\text{WIND}} = 0.4 \text{ rad}$, $r_{\text{LAUNCH}} = 0.07 \text{ AU}$,

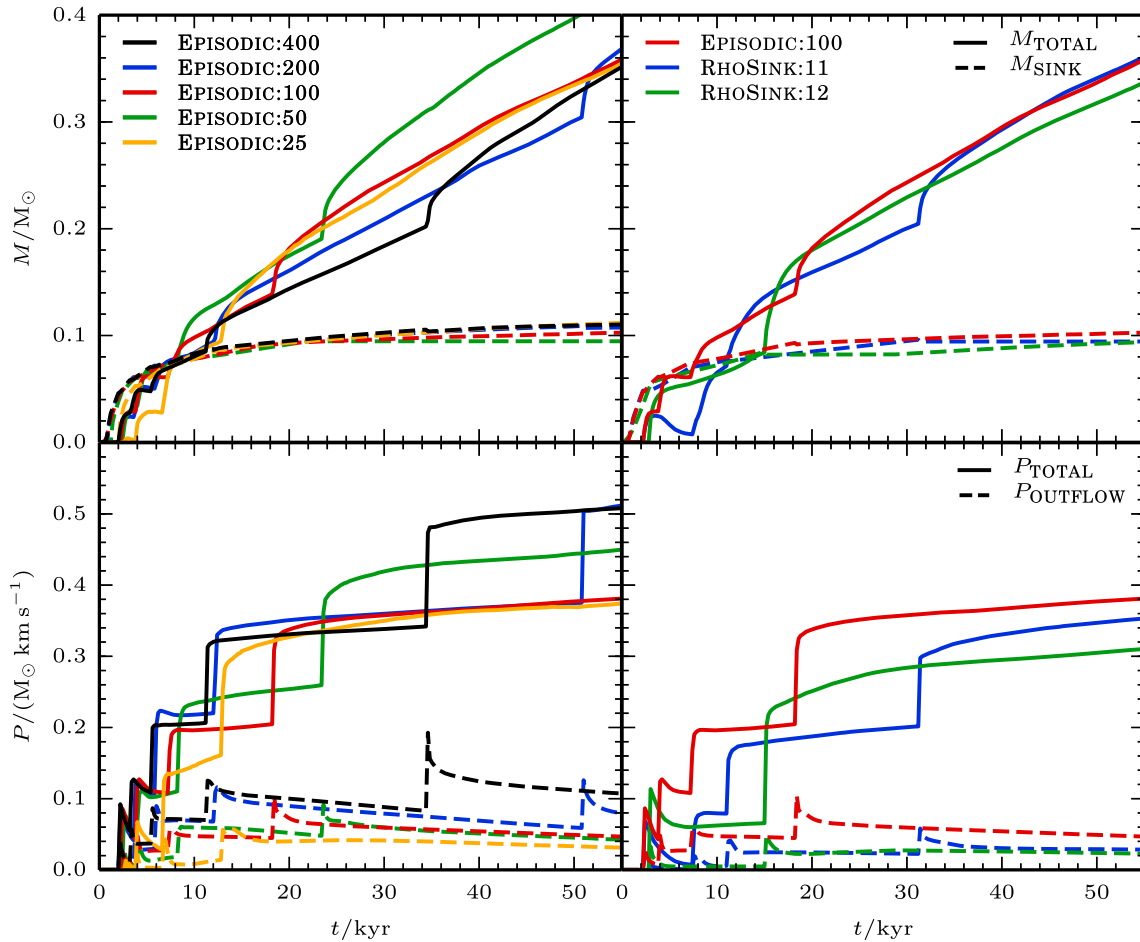


Figure 4. The top panels display the evolution of the sink mass ($M_{\text{SINK}}(t)$, dashed lines) and the total mass carried away by all the escaping SPH particles ($M_{\text{TOTAL}}(t)$, solid lines). The bottom panels display the evolution of the momentum carried away by the escaping outflow SPH particles alone ($P_{\text{OUTFLOW}}(t)$, dashed lines), and by all the escaping SPH particles (i.e. including ambient SPH particles entrained in the flow; $P_{\text{TOTAL}}(t)$, solid lines). The left-hand panels show the results obtained with different numbers of SPH particles, and hence different mass-resolution, viz. $(N_{\text{CORE}}, M_{\text{RES}}) = (2.5 \times 10^4, 4 \times 10^{-3} M_{\odot})$, yellow; $(5 \times 10^4, 2 \times 10^{-3} M_{\odot})$, green; $(10^5, 10^{-3} M_{\odot})$, red; $(2 \times 10^5, 5 \times 10^{-4} M_{\odot})$, blue; $(4 \times 10^5, 2.5 \times 10^{-4} M_{\odot})$, black – corresponding to Runs 4, 5, 6, 7, and 8, respectively. The right-hand panels show the results obtained with different sink creation densities, $\rho_{\text{SINK}} = 10^{-10} \text{ g cm}^{-3}$, red; $10^{-11} \text{ g cm}^{-3}$, blue; $10^{-12} \text{ g cm}^{-3}$, green – corresponding to Runs 6, 9, and 10, respectively.

$\theta_{\text{JET}} = 0.01 \text{ rad}$, $f_{\text{EJECT}} = 0.1$, $r_{\text{MIN}} = 20 \text{ AU}$, and $\alpha_{\text{MRI}} = 0.1$). In each of Runs 11 through 22 (see Table 2), only one physical parameter is changed from its default value, and the numerical parameters are held at their default values, i.e. $N_{\text{CORE}} = 10^5$ (hence $m_{\text{SPH}} = 10^{-5} M_{\odot}$ and $M_{\text{RES}} = 10^{-3} M_{\odot}$) and $\rho_{\text{SINK}} = 10^{-10} \text{ g cm}^{-3}$.

3.3.1 The wind opening angle, θ_{WIND}

We consider three wind opening angles, $\theta_{\text{WIND}} = 0.6 \text{ radian}$ (Run 11), 0.4 radian (fiducial Run 6) and 0.2 radian (Run 12); the evolution of $M_{\text{SINK}}(t)$ and $M_{\text{TOTAL}}(t)$ is shown in the top left-hand panel of Fig. 6, and the evolution of $P_{\text{OUTFLOW}}(t)$ and $P_{\text{TOTAL}}(t)$ in the top left-hand panel of Fig. 7. If we analyse the results at the end of the simulation, t_{END} , then, as θ_{WIND} is decreased from 0.6 radian to 0.2 radian (i.e. by a factor of 3), there is very little change in $M_{\text{SINK}}(t_{\text{END}})$ ($\lesssim 1$ per cent), but the amount of mass escaping, $M_{\text{TOTAL}}(t_{\text{END}})$, has increased by ~ 25 per cent; and the amount of momentum escaping, $P_{\text{TOTAL}}(t_{\text{END}})$, has increased by ~ 100 per cent. This seemingly counterintuitive result arises because it is the relatively fast narrow jet, rather than the relatively slow wide-angle wind, that does most of

the damage to the core; as θ_{WIND} is decreased, an increasing fraction of the outflow is concentrated in the jet.

3.3.2 The launch radius, r_{LAUNCH}

We consider three launch radii, $r_{\text{LAUNCH}} = 0.14 \text{ AU}$ (Run 13), 0.07 AU (fiducial Run 6), and 0.047 AU (Run 14; this last value fits the observations of Lee et al. (2017)). The evolution of $M_{\text{SINK}}(t)$ and $M_{\text{TOTAL}}(t)$ is shown in the top right-hand panel of Fig. 6, and the evolution of $P_{\text{OUTFLOW}}(t)$ and $P_{\text{TOTAL}}(t)$ in the top right-hand panel of Fig. 7. Smaller values of r_{LAUNCH} equate to higher outflow velocities (see equation (16)), and consequently, all other things being equal, more vigorous feedback. However, as r_{LAUNCH} is decreased, the outburst frequency decreases and the downtime between outbursts lengthens; since outbursts produce abrupt changes in M_{TOTAL} and P_{TOTAL} , this makes quantitative comparison difficult. If we make the comparison at $\sim 32 \text{ kyr}$, when all three runs have experienced the same number of outbursts, then, as r_{LAUNCH} is decreased from 0.14 AU to 0.047 AU (i.e. by a factor of 3), M_{SINK} decreases by ~ 21 per cent, M_{TOTAL} increases by ~ 56 per cent, and P_{TOTAL} increases by ~ 81 per cent. By the end of the simulation,

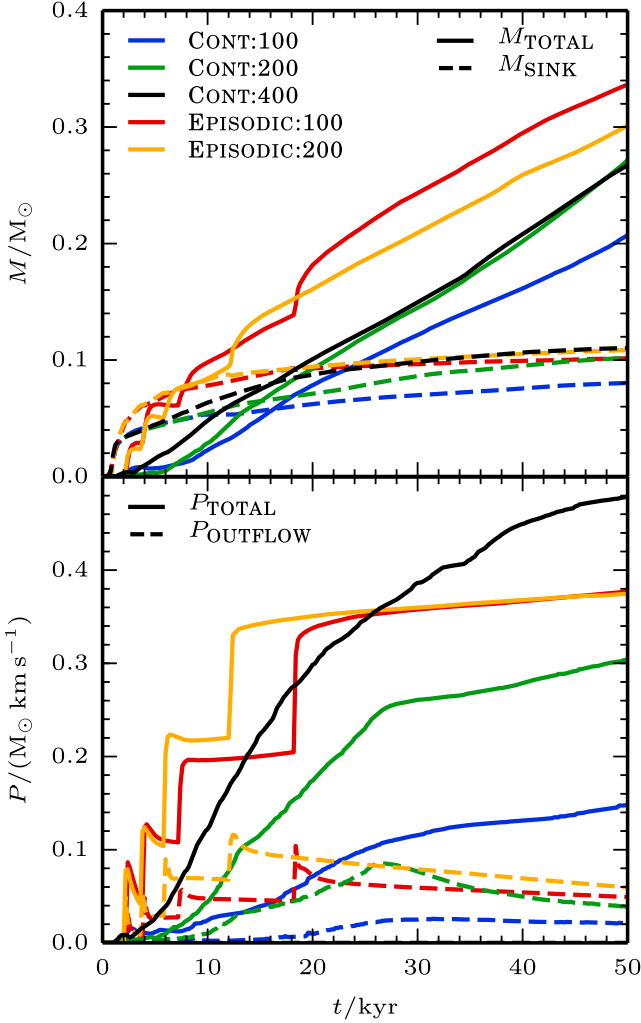


Figure 5. As Fig. 4, but for Run 1 (CONT:100; blue), Run 2 (CONT:200; green), Run 3 (CONT:400; black), Run 6 (EPISODIC:100; red), and Run 7 (EPISODIC:200; yellow), comparing and contrasting episodic and continuous outflow feedback.

at ~ 50 kyr, Run 13 (with $r_{\text{LAUNCH}} = 0.14$ AU) has experienced one more outburst than the other two runs, and the increases in M_{TOTAL} and P_{TOTAL} are reduced to 28 per cent and 23 per cent respectively; the decrease in M_{SINK} is still ~ 21 per cent. We conclude that reducing r_{LAUNCH} by a factor of 3 reduces the rate at which M_{SINK} grows by 21 per cent, and increases the rate at which mass and momentum escape by 42 ± 14 per cent and 52 ± 29 per cent, respectively, with the uncertainty deriving from when the comparison is made and how many outbursts there have been.

3.3.3 The jet opening angle, θ_{JET}

We consider three jet opening angles, $\theta_{\text{JET}} = 0.05$ radian (Run 15; this is the maximum suggested by Matzner & McKee (1999)), 0.01 radian (fiducial Run 6) and 0.005 radian (Run 16). The evolution of $M_{\text{SINK}}(t)$ and $M_{\text{TOTAL}}(t)$ is shown in the middle left-hand panel of Fig. 6, and the evolution of $P_{\text{OUTFLOW}}(t)$ and $P_{\text{TOTAL}}(t)$ in the middle left-hand panel of Fig. 7. Smaller values of θ_{JET} correspond to more tightly collimated, faster jets (see equations (13) and (16), and Fig. 1), which are slightly more effective in reducing the rate of growth of the sink (lower M_{SINK}), and slightly more effective

in dispersing the core (larger M_{TOTAL} and P_{TOTAL}). Specifically, if we make the comparison at the end of the simulations (~ 50 kyr), then, as θ_{JET} is reduced from 0.05 radian to 0.005 radian (i.e. by a factor of 10), M_{SINK} decreases by ~ 7 per cent, M_{TOTAL} increases by ~ 15 per cent, and P_{TOTAL} increases by ~ 19 per cent. The timing of outbursts is also not very sensitive to θ_{JET} , and we conclude that θ_{JET} is not a very critical parameter

3.3.4 The ejection fraction, f_{EJECT}

We consider three ejection fractions, $f_{\text{EJECT}} = 0.2$ (Run 17), 0.1 (fiducial Run 6), and 0.05 (Run 18). The evolution of $M_{\text{SINK}}(t)$ and $M_{\text{TOTAL}}(t)$ is shown in the middle right-hand panel of Fig. 6, and the evolution of $P_{\text{OUTFLOW}}(t)$ and $P_{\text{TOTAL}}(t)$ in the middle right-hand panel of Fig. 7. If f_{EJECT} is reduced, the sink grows faster, the amount of mass and momentum escaping from the core goes down, and there are longer downtimes between outbursts. If we make the comparison at the end of the simulations (~ 50 kyr), then, as f_{EJECT} is reduced from 0.2 to 0.05 (i.e. by a factor of 4), M_{SINK} increases by ~ 38 per cent, M_{TOTAL} decreases by ~ 23 per cent, and P_{TOTAL} decreases by ~ 52 per cent. We conclude that f_{EJECT} is a mildly critical parameter.

3.3.5 The minimum injection radius, r_{MIN}

We consider three minimum injection radii, $r_{\text{MIN}} = 30$ AU (Run 19), 20 AU (fiducial Run 6), and 10 AU (Run 20). The evolution of $M_{\text{SINK}}(t)$ and $M_{\text{TOTAL}}(t)$ is shown in the bottom left-hand panel of Fig. 6, and the evolution of $P_{\text{OUTFLOW}}(t)$ and $P_{\text{TOTAL}}(t)$ in the bottom left-hand panel of Fig. 7. Reducing r_{MIN} from 30 AU to 10 AU (i.e. by a factor of 3) has very little effect, apart from increasing the downtime between outbursts; at the end of the simulations (~ 50 kyr) M_{SINK} , M_{TOTAL} and P_{TOTAL} all differ by at most ~ 5 per cent. We conclude that r_{MIN} is not a critical parameter.

3.3.6 The Shakura–Sunyayev viscosity parameter, α_{MRI}

We consider three Shakura–Sunyayev viscosity parameters, $\alpha_{\text{MRI}} = 0.2$ (Run 21), 0.1 (fiducial Run 6), and 0.05 (Run 22). The evolution of $M_{\text{SINK}}(t)$ and $M_{\text{TOTAL}}(t)$ is shown in the bottom right-hand panel of Fig. 6, and the evolution of $P_{\text{OUTFLOW}}(t)$ and $P_{\text{TOTAL}}(t)$ in the bottom right-hand panel of Fig. 7. In the Stamatellos et al. (2012) prescription for episodic accretion, α_{MRI} controls the accretion rate from the IAD onto the protostar during an outburst. Reducing α_{MRI} leads to longer, but less intense, outbursts, and the net effect is rather small. If we make the comparison at the end of the simulations (~ 50 kyr), then, as α_{MRI} is reduced from 0.2 to 0.05 (i.e. by a factor of 4), M_{SINK} increases by < 2 per cent, M_{TOTAL} by < 6 per cent, and P_{TOTAL} by < 16 per cent. We conclude that α_{MRI} is not a critical parameter.

3.3.7 Self-regulated outflow feedback

The most critical physical parameters appear to be θ_{WIND} (because it influences the extent to which the outflow is concentrated in the jet), r_{LAUNCH} (because it influences the velocity at which the outflow is launched) and f_{EJECT} (because it influences the amount of mass going into the outflow). Furthermore, the quantity that is most sensitive to these parameters is P_{TOTAL} , and M_{SINK} is least sensitive. However,

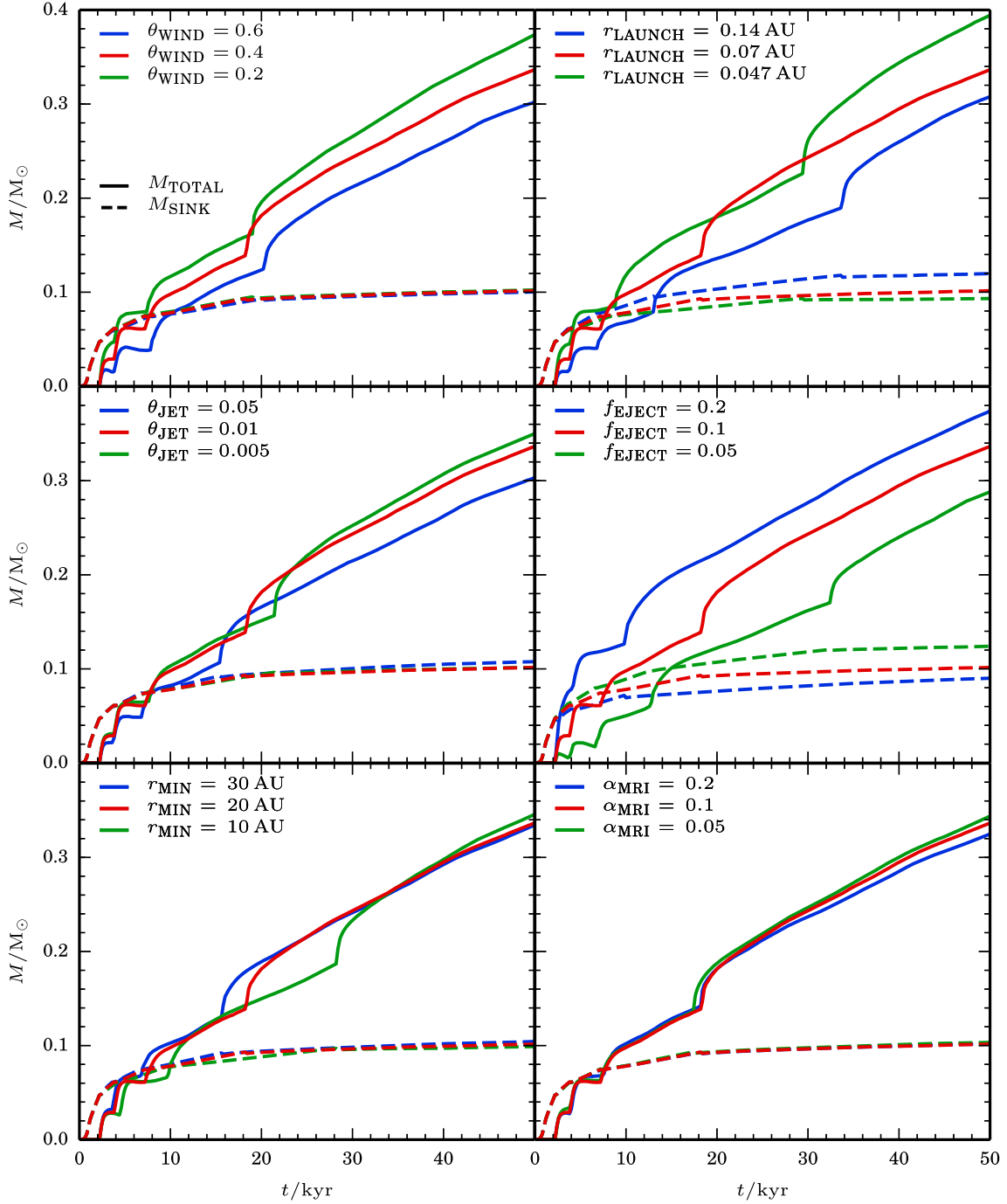


Figure 6. The evolution of the sink mass ($M_{\text{SINK}}(t)$, dashed lines) and the total mass carried away by all the escaping SPH particles ($M_{\text{TOTAL}}(t)$, solid lines), for different values of the model parameters. *Top left:* the wind opening angle, $\theta_{\text{WIND}} = 0.2$ radian, 0.4 radian (default) and 0.6 radian. *Top right:* the launch radius, $r_{\text{LAUNCH}} = 0.047$ AU, 0.07 AU (default), and 0.14 AU. *Middle left:* the jet opening angle, $\theta_{\text{JET}} = 0.005$ radian, 0.01 radian (default), and 0.05 radian. *Middle right:* the ejected fraction, $f_{\text{EJECT}} = 0.05$, 0.1 (default), and 0.2. *Bottom left:* the minimum injection radius, $r_{\text{MIN}} = 10$ AU, 20 AU (default) and 30 AU. *Bottom right:* the Shakura–Sunayev viscosity parameter, $\alpha_{\text{MRI}} = 0.05$, 0.1 (default), and 0.2.

all the dependences are ‘sub-linear’. For example, the three most extreme dependences are

$$\frac{d \ln (P_{\text{TOTAL}})}{d \ln (\theta_{\text{WIND}})} \sim -0.63, \quad (43)$$

$$-0.54 \lesssim \frac{d \ln (P_{\text{TOTAL}})}{d \ln (r_{\text{LAUNCH}})} \lesssim -0.19, \quad (44)$$

$$-0.40 \lesssim \frac{d \ln (M_{\text{TOTAL}})}{d \ln (r_{\text{LAUNCH}})} \lesssim -0.22. \quad (45)$$

The basic reason for these rather weak dependences is a self-regulation mechanism. In runs with parameters that reduce the impact of the outflow on the core, the sink is able to accrete faster, leading to more frequent outbursts, and shorter downtimes between

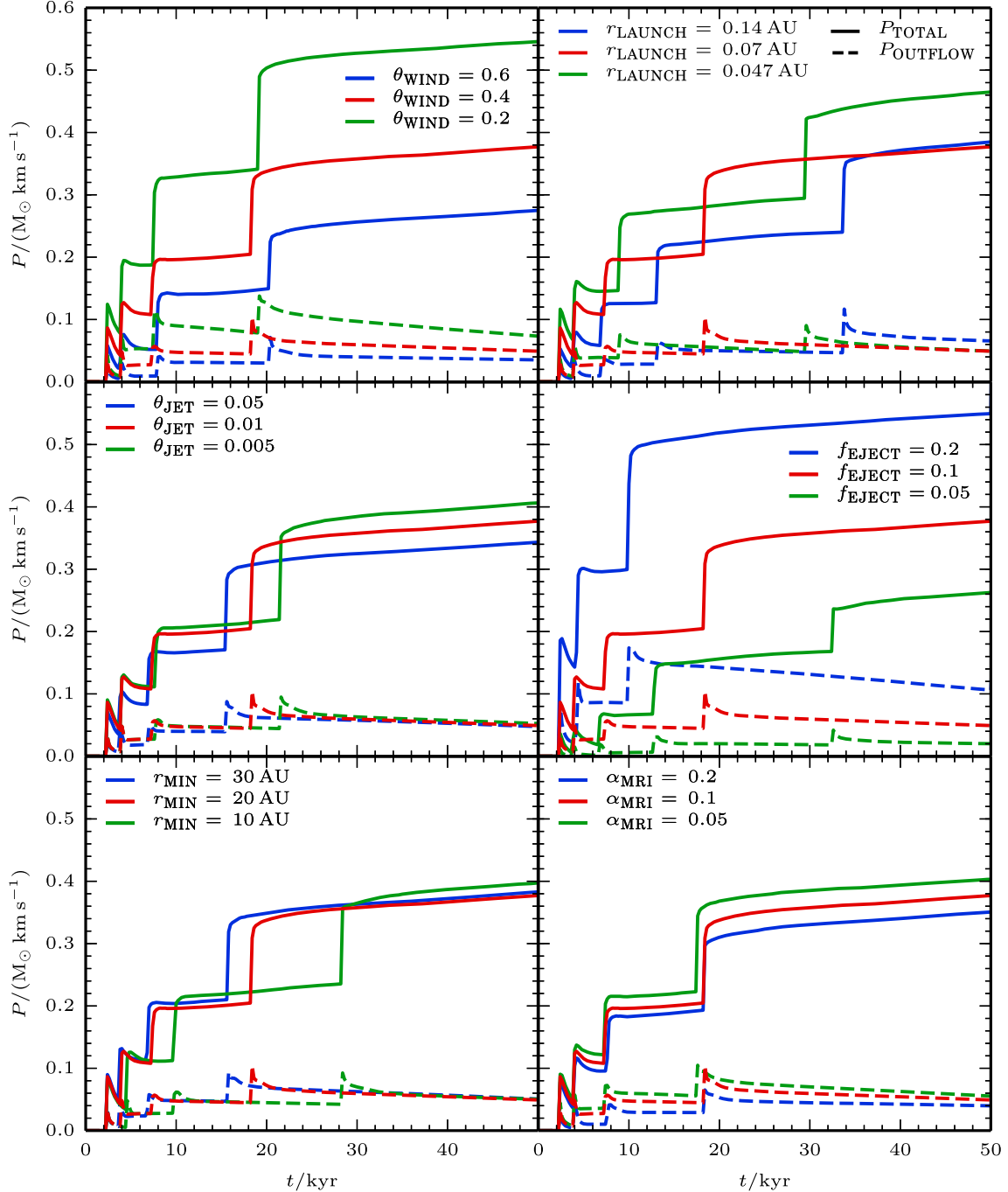


Figure 7. As Fig. 6 but for the evolution of the momentum carried away by the escaping outflow SPH particles alone ($P_{\text{OUTFLOW}}(t)$, dashed lines), and by all the escaping SPH particles (i.e. including ambient SPH particles entrained in the flow; $P_{\text{TOTAL}}(t)$, solid lines).

outbursts. We conclude that using the default parameter values will not significantly affect our main findings.

4 THE TURBULENT SETUP

In order to illustrate a more realistic situation, Fig. 8 shows column-density images from a run with the Turbulent Setup (see Section 2.4). All parameters for the Episodic Accretion Model (Section 2.2) and the Outflow Feedback Model (Section 2.3) are the same as in the Rotating Setup fiducial Run 6 (see Table 2). A single protostar forms at ~ 90 kyr with a final mass of $M_* = 0.45 M_\odot$. Its

accretion ceases at ~ 180 kyr since by this stage most of the gas has either been accreted or dispersed. The simulation is finally stopped at ~ 230 kyr.

The protostar launches outflow bullets labelled $A_{L/R}$ through $E_{L/R}$ corresponding to the left and right outflow lobe. In the remainder of the paper, we will only refer to the left lobe and therefore we drop the subscript L henceforth. The outflow bullets form an S-shaped chain of Herbig–Haro objects. The S-shape is due to the varying orientation of the angular momentum, L_{IAD} , caused by anisotropic accretion onto the IAD from core (Ybarra et al. 2006; Wu, Takakuwa & Lim 2009; Zhang et al. 2013; Frank et al. 2014).

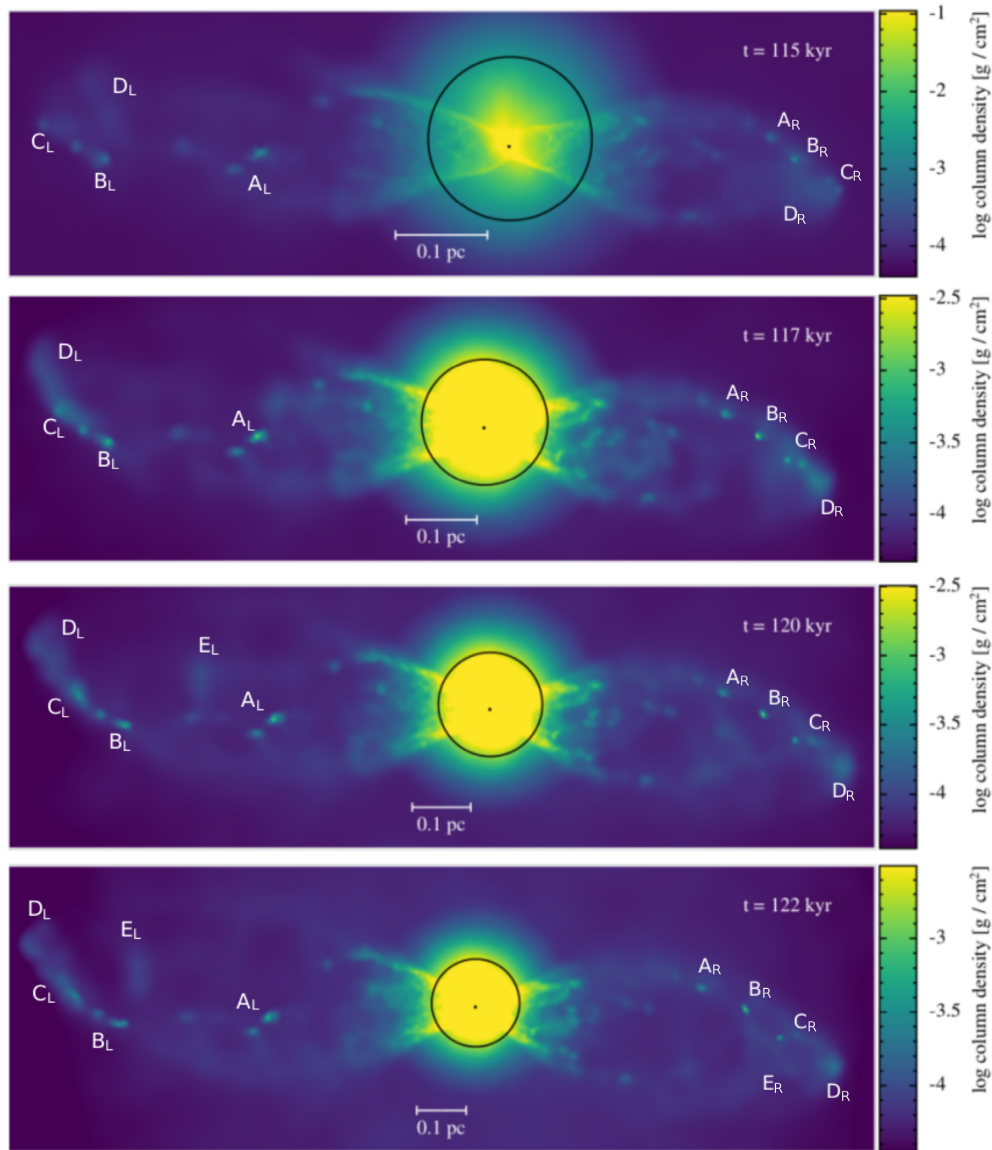


Figure 8. Column density images of the Turbulent Setup, at $t = 115$, 117 , 120 and 122 kyr. The circle indicates the initial radius of the core, and the viewing angle is chosen so that the outflow axis is approximately horizontal. The bullets are labelled $A_{L/R}$ through $E_{L/R}$ for the corresponding left and right lobe, in order of increasing age (see Fig. 9). The time series, from top to bottom, shows the end of a cycle of a bullet, here bullet D_L , when it hits the leading shock front. Bullet D_L hits the leading shock front with high velocity, overtakes the older bullets and decelerates. In the last panel, the newly ejected bullet E_L is in a comparable position as former bullet D_L in the first frame.

The first two bullets interact with the collapsing dense core material and are thus not visible in Fig. 8. The timespan from 115 kyr to 122 kyr is chosen to capture the end of a cycle of an outflow bullet, here bullet D, when it hits the leading shock front. This cycle happens in a similar fashion for all other bullets, except the first bullet A. This is the first bullet that breaks out of the core and survives as a coherent structure. Bullets B and C have higher velocity and have overtaken A. Bullet D starts off faster still, and by the final frame it has overtaken all the others and hit the leading shock, where it is slowed down. Bullet E is even faster, but by the final frame it has not yet caught up with D and is in a similar position as former bullet D in the first frame. A sixth bullet has been launched, but is still inside the core, and therefore can not be seen on Fig. 8.

Fig. 9 shows the accretion rates onto the sink, \dot{M}_{SINK} and onto the protostar, \dot{M}_* , between $t = 90$ kyr (when the protostar forms) and

$t = 150$ kyr. \dot{M}_{SINK} is relatively constant, between $\sim 2 \times 10^{-5}$ and $\sim 5 \times 10^{-6} M_{\odot} \text{ yr}^{-1}$. The accretion rate tends to decrease over time. It drops briefly, following an outburst, because the outburst heats the accretion disc (cf. Lomax et al. 2014, 2015). The accretion rate of the protostar is low in the quiescent phase, $\dot{M}_* = 10^{-7} M_{\odot} \text{ yr}^{-1}$, but approaches $10^{-3} M_{\odot} \text{ yr}^{-1}$ during an outburst. Note that the time resolution in Fig. 9 is too coarse to resolve the very short outbursts. The downtime between outbursts is $\sim 4000 \pm 2000$ yr and the duration of an outburst is $\sim 40 \pm 20$ yr (Stamatellos et al. 2007, 2011b).

4.1 Position–velocity diagrams

In order to determine whether the simulated outflow reproduces the ‘Hubble-Law’ relation, and individual ‘Hubble Wedges’, as observed, for example, by Bachiller et al. (1990); Arce & Goodman

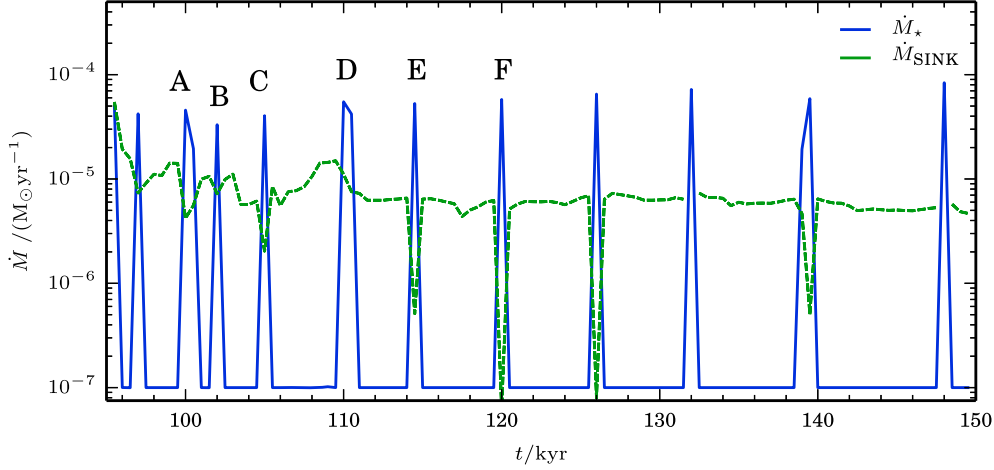


Figure 9. Evolution of the accretion rates onto the sink particle, $\dot{M}_{\text{SINK}}(t)$ (green), and the protostar, $\dot{M}_*(t)$ (blue). The labels, A–F, correspond to the outflow bullets formed in the individual outbursts (see Figs. 8 and 10). Note that the time resolution in this figure is too coarse to fully resolve the very short outbursts.

(2001); Tafalla et al. (2004); Santiago-García et al. (2009); Wang et al. (2014), we construct PV-diagrams, i.e. false-colour plots of

$$\Delta M_{\text{PIXEL}} = \frac{d^2 M}{dr dv_{\text{RAD}}} \Delta r \Delta v_{\text{RAD}} \quad (46)$$

on the (r, v_{RAD}) plane. Here, r is radial distance, and v_{RAD} is radial velocity, both measured from the centre of mass. For the velocity axis we take 180 bins with a width of $\Delta v_{\text{RAD}} = 0.56 \text{ km s}^{-1}$. For the spatial axis, we take 180 spherically symmetric shells around the centre of mass with a width of $\Delta r = 0.0056 \text{ pc}$ and consider only particles with radial outflow velocities larger than the escape velocity (equation (37)). Note that in this case $M_{\text{TOTAL}} = 3.9 M_{\odot}$, so the escape velocity at 0.1 pc is 0.58 km s^{-1} . This effectively constrains our analysis to the outflow cones. As a final step, we use a kernel density estimator to compute ΔM_{PIXEL} , with a smoothing length obtained using “Scott’s Rule” (Scott 1992).

Fig. 10 (right-hand side) shows PV diagrams for the left lobe of the outflow at the same times as shown on Fig. 8. Features associated with the individual bullets are marked A, B, C, etc., in both figures.

The PV-diagram at 115 kyr is shown in the top right-hand panel of Fig. 10. At this stage, bullets A, B, and C define the Hubble Law. The oldest bullet, A, moves slowest, at $\sim 25 \text{ km s}^{-1}$ and has only reached $\sim 0.3 \text{ pc}$. Bullets B and C appear merged, but are in fact kinematically separate. B moves outwards faster than A, at $\sim 30 \text{ km s}^{-1}$, and has reached $\sim 0.46 \text{ pc}$. C moves outwards faster than B, at $\sim 40 \text{ km s}^{-1}$, and has reached $\sim 0.52 \text{ pc}$. Bullet D moves outwards at $\sim 80 \text{ km s}^{-1}$, but has only been going for $\sim 6 \text{ kyr}$, so it has not yet hit the leading shock and been decelerated. Bullet E has only just been launched, within the last $\sim 1 \text{ kyr}$; the outburst at $\sim 114 \text{ kyr}$ that launches E can be seen on Fig. 9.

At subsequent times (reading down the right-hand column of Fig. 10: 117 kyr, 120 kyr, and 122 kyr) we see Bullet D decelerate and line up with the Hubble Law; Bullet E start to hit the leading shock and decelerate, and the launch of Bullet F; the outburst at $\sim 120 \text{ kyr}$ that launches F can be seen on Fig. 9. These results are very similar to the 350 GHz continuum and CO $J = 3 - 2$ observations of the outflow from IRAS 04166 + 2706 reported by Wang et al. (2014). They find numerous high-velocity outflow bullets, which slowly decelerate as they move outwards.

4.2 Mass–velocity Relation

The left-hand panels of Fig. 10 show MV-diagrams for the left lobe of the simulated outflow, i.e. plots of

$$\Delta M = \frac{dM}{dv_{\text{RAD}}} \Delta v_{\text{RAD}} \quad (47)$$

against v_{RAD} , at the same times as the PV-diagrams in the right-hand panels. Each point represents the mass in a radial velocity interval $\Delta v_{\text{RAD}} = 2 \text{ km s}^{-1}$, and only points that correspond to ≥ 22 SPH articles ($\geq 10^{-4} M_{\odot}$) are considered. At low velocities, $v_{\text{RAD}} \lesssim 80 \text{ km s}^{-1}$, the plots can be fitted well with a single shallow power-law,

$$\frac{dM}{dv_{\text{RAD}}} \propto v_{\text{RAD}}^{-\gamma}, \quad (48)$$

with $\gamma \simeq 1.5$, in good agreement with observed and simulated values (Kuiper et al. 1981; Lada & Fich 1996; Bachiller & Tafalla 1999; Richer et al. 2000; Keegan & Downes 2005; Arce et al. 2007; Liu et al. 2017; Li et al. 2018).

Some observers have reported a knee, at high velocities, above which the slope abruptly becomes much steeper. We find no evidence for this, possibly because our simulation is unable to resolve the small amounts of mass involved.

On the MV diagram, the bullets are manifest as small local peaks. The oldest bullet, A, has the lowest velocity, and the youngest bullet, F, has the highest. There are two reasons for this. (a) The protostellar mass, $M_*(t)$ increases, and so the later bullets are launched at higher velocity (see equation (16)). (b) The later bullets encounter less resistance because earlier bullets have cleared the way for them.

5 DISCUSSION

Using our new model, we are able to simulate the collapse of a core to form a protostar, and the role of episodic accretion and outflow in regulating the growth of the protostar and launching high-velocity bullets into the surroundings. This produces kinematic features that mimic the Hubble Law and Hubble Wedge features seen in real star-forming cores with outflows, and allows us to connect these features in an evolutionary sequence. The bullets launched later have higher velocities, up to $\sim 120 \text{ km s}^{-1}$; this is basically because the mass of the protostar increases, and hence the escape speed from its locality

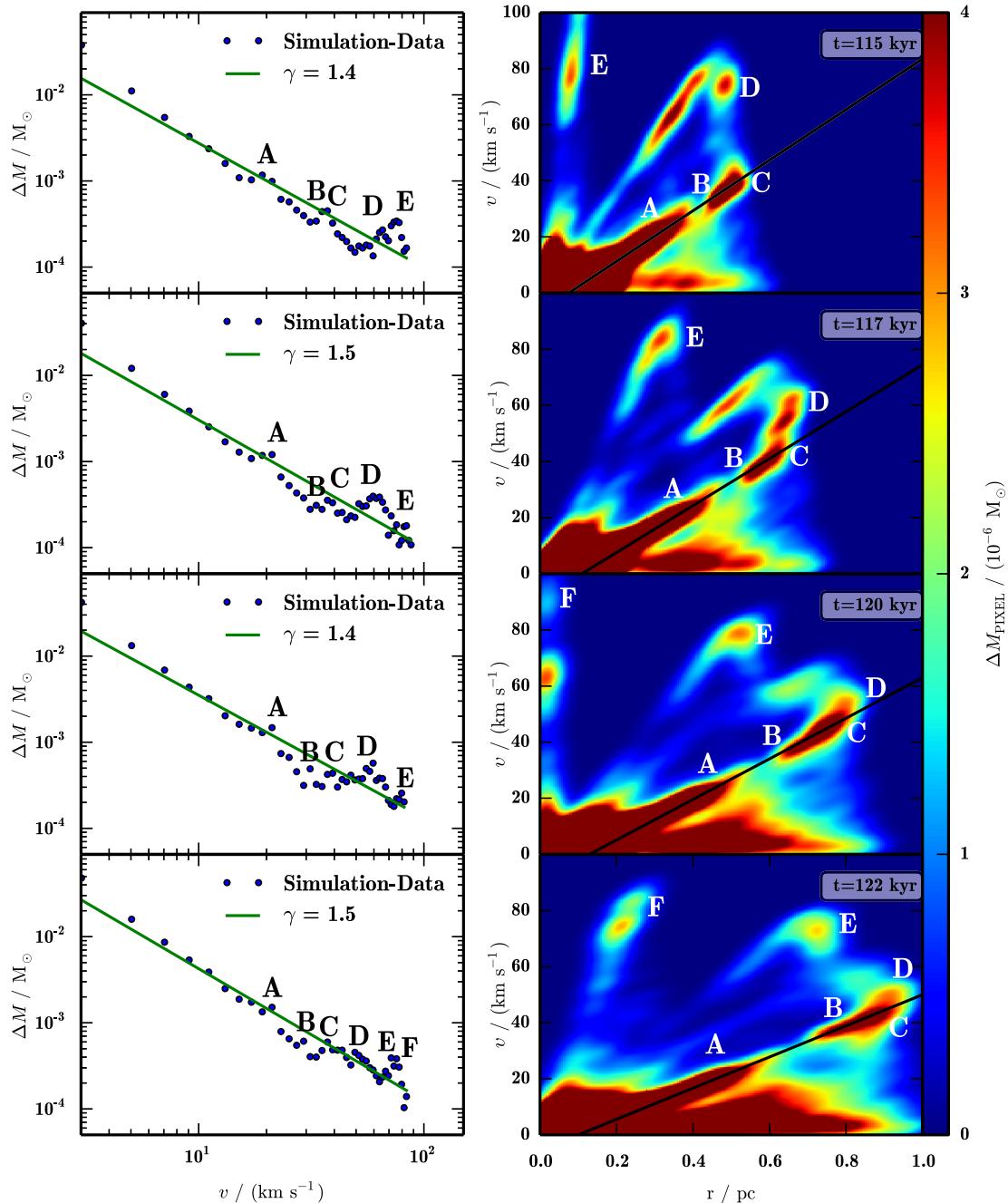


Figure 10. MV- and PV-diagrams for the lefthand outflow lobe, at the same four times illustrated in Fig. 8, and using the same labels (A through F) to identify features associated with the individual bullets. *Left panels:* MV-diagrams showing power-law behaviour with slope $\gamma \sim 1.5$. The locations of individual bullets are marked by small jumps on this plot. *Right panels:* PV-diagram. The black line shows the best-fit Hubble law ($v_{\text{RAD}} \sim v_{\text{O}} + v'_{\text{O}} r$), and marks the location of bullets that have already been decelerated at the leading shock; those bullets that have not yet been decelerated lie above this line.

increases. They are also launched into a cavity that has been cleared out by earlier bullets (Wang et al. 2014), and therefore they tend to travel further before they run into the ambient medium and are decelerated. As a result the later bullets leave wakes pointing back towards the star – these are the Hubble Wedges – and the earlier bullets define an approximately linear Hubble-like velocity field. In our simulations, the individual outflow events also produce bumps in the MV relation that are similar to those observed by Qiu & Zhang (2009)

The main difference between the prescriptions for ejection used by e.g. Federrath et al. 2014; Offner & Arce 2014; Offner & Chaban 2017 and our model is such that the ejection rate is not determined directly by the accretion rate onto the sink, but by the accretion rate onto the central protostar within the sink, and this rate is moderated by an episodic cycle. Nonetheless, like Federrath et al. (2014) we find that the feedback is self-regulated, in the sense that the outflow properties do not depend strongly on the ejection fraction f_{EJECT} .

By varying θ_{JET} we find, like Offner & Arce (2014), that even highly collimated jets are able to entrain large fractions of gas. In contrast to their turbulent simulation, we find a significant precession of the outflow, leading to an S-shaped chain of Herbig–Haro objects. Compared with Federrath et al. (2014) and Offner & Chaban (2017) we find a much higher ratio of entrained to ejected gas, ~ 30 , because we eject gas at higher velocities of up to 120 km s^{-1} . This also explains our lower star formation efficiency, of only ~ 10 per cent.

We note the following shortcomings of our Outflow Feedback Model. Unlike Offner & Chaban (2017), we do not use a stellar evolution model, and therefore we have to invoke a somewhat more arbitrary prescription for the outflow velocity, and for the amount of angular momentum that is carried away by the outflow; specifically, we assume a constant fraction of the angular momentum is removed (Herbst et al. 2007; Bouvier et al. 2014). A stellar evolution model would also improve the treatment of radiative feedback from the protostar – in the sense that the current treatment probably underestimates the protostellar luminosity between outbursts – and we are planning to include the protostellar model of Offner & Chaban (2017) in a follow-up paper (Rohde, Walch & Seifried).

In addition, although the treatment of radiation transport (Stamatellos et al. 2007, 2011b) appears to work reasonably well in the context of collapsing cores, and even accretion disks, it is unlikely to work so well in the walls of the outflow cavity (Kuiper, Turner & Yorke 2016). However, since we are simulating the formation of low mass stars, the effects of radiation are expected to be small compared with the outflow feedback.

Finally, the role of the magnetic field is implicit in the model for accretion onto the protostar and the outflow launching prescription, but its effect on the dynamics of core collapse and the interaction between the core and the outflow is ignored here, and could be significant (Commerçon et al. 2010; Seifried et al. 2012; Wurster, Price & Bate 2016; Wurster, Bate & Price 2018).

In future work, we will use the model presented in this paper to study the influence of episodic outflow feedback on the star formation efficiency and the shape of the stellar initial mass function. With higher resolution, we will be able to study the high-velocity tail of the PV-diagram, which is not resolved in the simulations presented in this study. These high-resolution simulations will also enable us to examine the rotational properties of outflow bullets, and to compare them with the observations of e.g. Launhardt et al. (2009), Chen et al. (2016), Lee et al. (2017), and Tabone et al. (2017).

6 CONCLUSION

Recent studies of outflows from young, low-mass protostars suggest that their accretion and outflows are episodic. Our newly developed sub-grid outflow model for SPH takes this episodic behaviour into account. Besides the benefits of a more realistic outflow model, episodicity actually decreases the mass-resolution needed to properly model the outflow (because the gas is denser in an outflow burst than in a continuous outflow), and at the same time reduces the computation required (because the outflow particles are launched in short outbursts).

We explore the effect of episodic accretion and outflow from a protostar formed at the centre of an initially static, rigidly rotating, spherically symmetric core with $\rho \propto r^{-2}$. We show that key properties like the rate of growth of the protostar, and the net mass and momentum carried away by the outflow, are only weakly dependent on numerical parameters. In particular, reliable results can probably

be obtained with quite low mass-resolution ($m_{\text{SPH}} \sim 2 \times 10^{-5} M_{\odot}$) and low sink creation density ($\rho_{\text{SINK}} \sim 10^{-12} \text{ g cm}^{-3}$). The rate of growth of the protostar, and the net mass and momentum carried away by the outflow, are also rather weakly dependent on the physical parameters, because of self-regulation: if the physical parameters are changed so as to increase the outflow driven by a given rate of accretion onto the protostar, then the rate of accretion is reduced by the outflow, so the actual rate of outflow is little changed. We conclude that our model can be implemented in large-scale simulations of molecular clouds, where m_{SPH} has to be large, and ρ_{SINK} has to be small, in order to follow simultaneously the formation of many protostars, all potentially having outflows.

We follow the effect of episodic accretion and outflow from a protostar formed near the centre of an initially turbulent, spherically symmetric core with density profile proportional to that of a Bonnor–Ebert sphere. The episodic outflow produces a parsec-long S-shaped chain of bullets, which we identify with Herbig–Haro objects. The position–velocity diagram for these bullets shows two features. Bullets that were ejected early were ejected with lower radial velocities, and have by now been decelerated at the leading shock; these bullets have radial velocities that are linearly proportional to their radial distance, i.e. they subscribe to a Hubble Law. Bullets that were only ejected recently have higher radial velocities and have not yet been decelerated at the leading shock front; these bullets form Hubble wedges. The mass–velocity relation for the gas in the outflow can be fit approximately with $dM/dv_{\text{RAD}} \propto v_{\text{RAD}}^{-1.5}$, in good agreement with observation. Individual bullets are manifest as small bumps along this relation. If there is a steeper slope at higher velocities, we are unable to resolve it in this simulation.

ACKNOWLEDGEMENTS

The authors like to thank the anonymous referee for the comments that helped to significantly improve the paper. PFR, SW, and SDC acknowledge support via the ERC starting grant No. 679852 ‘RAD-FEEDBACK’. PFR, SW, and SDC acknowledge the support of the Bonn–Cologne Graduate School, which is funded through the German Excellence Initiative. SDC and SW thank the DFG for funding via the SFB 956 ‘Conditions & impact of SF’. APW gratefully acknowledges the support of a consolidated grant (ST/K00926/1) from the UK Science and Technology Facilities Council. The authors gratefully acknowledge the Gauss Centre for Supercomputing e.V. (www.gauss-centre.eu) for funding this project by providing computing time on the GCS Supercomputer SuperMUC at Leibniz Supercomputing Centre (<http://www.lrz.de>). PFR acknowledges D. Price for providing the visualization tool SPLASH (Price 2011).

REFERENCES

- André P., Di Francesco J., Ward-Thompson D., Inutsuka S.-I., Pudritz R. E., Pineda J. E., 2014, in Beuther H., Klessen R. S., Dullemond C. P., Henning T., eds, *Protostars and Planets VI*, University of Arizona Press, Tucson, p. 27
- Arce H. G., Goodman A. A., 2001, *ApJ*, 551, L171
- Arce H. G., Shepherd D., Gueth F., Lee C.-F., Bachiller R., Rosen A., Beuther H., 2007, in Reipurth B., Jewitt D., Keil K., eds, *Protostars and Planets V*, University of Arizona Press, Tucson, p. 245
- Audard M. et al., 2014, in Beuther H., Klessen R. S., Dullemond C. P., Henning T., eds, *Protostars and Planets*, University of Arizona Press, Tucson, p. 387.
- Bachiller R., Tafalla M., 1999, in Lada C. J., Kylafis N. D., eds, *NATO Advanced Science Institutes (ASI) Series C Vol. 540*, NATO Advanced Science Institutes (ASI) Series C. p. 227

- Bachiller R., Martin-Pintado J., Tafalla M., Cernicharo J., Lazareff B., 1990, *A&A*, 231, 174
- Balbus S. A., Hawley J. F., 1991, *ApJ*, 376, 214
- Bally J., 2016, *ARA&A*, 54, 491
- Bate M. R., Bonnell I. A., Price N. M., 1995, *MNRAS*, 277, 362
- Bate M. R., Tricco T. S., Price D. J., 2014, *MNRAS*, 437, 77
- Belloche A., André P., Despois D., Blinder S., 2002, *A&A*, 393, 927
- Birks J. R., Fuller G. A., Gibb A. G., 2006, *A&A*, 458, 181
- Blandford R. D., Payne D. G., 1982, *MNRAS*, 199, 883
- Bonnor W. B., 1956, *ZAp*, 39, 143
- Bouvier J., Matt S. P., Mohanty S., Scholz A., Stassun K. G., Zanni C., 2014, in Beuther H., Klessen R. S., Dullemond C. P., Henning T., eds, *Protostars and Planets VI*, University of Arizona Press, Tucson, p. 433.
- Cabrit S., Raga A., Gueth F., 1997, in Reipurth B., Bertout C., eds, IAU Symposium Vol. 182, Herbig-Haro Flows and the Birth of Stars. p. 163
- Calvet N., Hartmann L., Kenyon S. J., 1993, *ApJ*, 402, 623
- Cesaroni R. et al., 2018, *A&A*, 612, 103
- Chen X., Arce H. G., Zhang Q., Launhardt R., Henning T., 2016, *ApJ*, 824, 72
- Choi M. et al., 2017, *ApJS*, 232, 24
- Clarke S. D., Whitworth A. P., Duarte-Cabral A., Hubber D. A., 2017, *MNRAS*, 468, 2489
- Commerçon B., Hennebelle P., Audit E., Chabrier G., Teyssier R., 2010, *A&A*, 510, L3
- Croswell K., Hartmann L., Avrett E. H., 1987, *ApJ*, 312, 227
- Cullen L., Dehnen W., 2010, *MNRAS*, 408, 669
- Cunningham A. J., Klein R. I., Krumholz M. R., McKee C. F., 2011, *ApJ*, 740, 107
- Davis C. J., Moriarty-Schieven G., Eislöffel J., Hoare M. G., Ray T. P., 1998, *AJ*, 115, 1118
- Dunham M. M., Vorobyov E. I., 2012, *ApJ*, 747, 52
- Ebert R., 1957, *ZAp*, 42, 263
- Federrath C., Schrön M., Banerjee R., Klessen R. S., 2014, *ApJ*, 790, 128
- Fehér O., Kóspál Á., Ábrahám P., Hogerheijde M. R., Brinch C., 2017, *A&A*, 607, A39
- Frank A. et al., 2014, in Beuther H., Klessen R. S., Dullemond C. P., Henning T., eds, *Protostars and Planets VI*, University of Arizona Press, Tucson, p. 451
- Hartigan P., Edwards S., Ghandour L., 1995, *ApJ*, 452, 736
- Hartmann L., 1997, in Reipurth B., Bertout C., eds, IAU Symposium Vol. 182, Herbig-Haro Flows and the Birth of Stars. p. 391
- Hartmann L., Calvet N., 1995, *AJ*, 109, 1846
- Hartmann L., Kenyon S. J., 1985, *ApJ*, 299, 462
- Hartmann L., Kenyon S. J., Hewett R., Edwards S., Strom K. M., Strom S. E., Stauffer J. R., 1989, *ApJ*, 338, 1001
- Hennebelle P., Commerçon B., Joos M., Klessen R. S., Krumholz M., Tan J. C., Teyssier R., 2011, *A&A*, 528, A72
- Herbig G. H., 1966, *Vistas in Astronomy*, 8, 109
- Herbst W., Eislöffel J., Mundt R., Scholz A., 2007, in Reipurth B., Jewitt D., Keil K., eds, *Protostars and Planets V*, University of Arizona Press, Tucson, p. 297
- Hsieh T.-H., Murillo N. M., Belloche A., Hirano N., Walsh C., van Dishoeck E. F., Lai S.-P., 2018, *ApJ*, 854, 15
- Hubber D. A., Batty C. P., McLeod A., Whitworth A. P., 2011, *A&A*, 529, A27
- Hubber D. A., Walch S., Whitworth A. P., 2013, *MNRAS*, 430, 3261
- Hubber D. A., Rosotti G. P., Booth R. A., 2018, *MNRAS*, 473, 1603
- Ibyamov S. I., Semkov E. H., Peneva S. P., 2018, *PASA*, 35, e007
- Keegan R., Downes T. P., 2005, *A&A*, 437, 517
- Kenyon S. J., Hartmann L., 1995, *ApJS*, 101, 117
- Kenyon S. J., Hartmann L. W., Strom K. M., Strom S. E., 1990, *AJ*, 99, 869
- Kenyon S. J., Gomez M., Marzke R. O., Hartmann L., 1994, *AJ*, 108, 251
- King A. R., Pringle J. E., Livio M., 2007, *MNRAS*, 376, 1740
- Konigl A., Pudritz R. E., 2000, in Mannings V., Boss A. P., Russell S. S., eds, *Protostars and Planets IV*, University of Arizona Press, Tucson, p. 759
- Kuffmeier M., Frimann S., Jensen S. S., Haugbølle T., 2018, *MNRAS*, 475, 2642
- Kuiper R., Yorke H. W., Turner N. J., 2015, *ApJ*, 800, 86
- Kuiper R., Turner N. J., Yorke H. W., 2016, *ApJ*, 832, 40
- Kuiper T. B. H., Zuckerman B., Rodriguez Kuiper E. N., 1981, *ApJ*, 251, 88
- Lada C. J., Fich M., 1996, *ApJ*, 459, 638
- Launhardt R. et al., 2009, *A&A*, 494, 147
- Lee C.-F., Mundy L. G., Stone J. M., Ostriker E. C., 2002, *ApJ*, 576, 294
- Lee C.-F., Ho P. T. P., Li Z.-Y., Hirano N., Zhang Q., Shang H., 2017, *Nature Astron.*, 1, 0152
- Lewis B. T., Bate M. R., 2017, *MNRAS*, 467, 3324
- Liu T. et al., 2017, *ApJ*, 849, 25
- Liu J., Qiu K., Wyrowski F., Menten K., Guesten R., Cao Y., Wang Y., 2018, preprint ([arXiv:1805.03990](https://arxiv.org/abs/1805.03990))
- Li P. S., Klein R. I., McKee C. F., 2018, *MNRAS*, 473, 4220
- Lomax O., Whitworth A. P., Hubber D. A., Stamatellos D., Walch S., 2014, *MNRAS*, 439, 3039
- Lomax O., Whitworth A. P., Hubber D. A., Stamatellos D., Walch S., 2015, *MNRAS*, 447, 1550
- Lomax O., Whitworth A. P., Hubber D. A., 2016a, *PASA*, 33, e004
- Lomax O., Whitworth A. P., Hubber D. A., 2016b, *MNRAS*, 458, 1242
- Lynden-Bell D., 2003, *MNRAS*, 341, 1360
- Machida M. N., 2014, *ApJ*, 796, L17
- Machida M. N., Hosokawa T., 2013, *MNRAS*, 431, 1719
- Machida M. N., Inutsuka S.-i., Matsumoto T., 2008, *ApJ*, 676, 1088
- Machida M. N., Inutsuka S.-i., Matsumoto T., 2009, *Astrophys. Space Sci. Proc.*, 13, 405
- Mao C.-h., Yang J., Lu D.-r., 2014, *Chinese Astron. Astrophys.*, 38, 19
- Matzner C. D., McKee C. F., 1999, *ApJ*, 526, L109
- Morris J. P., Monaghan J. J., 1997, *J. Comput. Phys.*, 136, 41
- Motte F., André P., Ward-Thompson D., Bontemps S., 2001, *A&A*, 372, L41
- Mundt R., Fried J. W., 1983, *ApJ*, 274, L83
- Myers A. T., Klein R. I., Krumholz M. R., McKee C. F., 2014, *MNRAS*, 439, 3420
- Nakamura F., Li Z.-Y., 2007, *ApJ*, 662, 395
- Offner S. S. R., Arce H. G., 2014, *ApJ*, 784, 61
- Offner S. S. R., Chaban J., 2017, *ApJ*, 847, 104
- Offner S. S. R., McKee C. F., 2011, *ApJ*, 736, 53
- Offner S. S. R., Klein R. I., McKee C. F., Krumholz M. R., 2009, *ApJ*, 703, 131
- Pelletier G., Pudritz R. E., 1992, *ApJ*, 394, 117
- Peters T., Klaassen P. D., Mac Low M.-M., Schrön M., Federrath C., Smith M. D., Klessen R. S., 2014, *ApJ*, 788, 14
- Plunkett A. L., Arce H. G., Corder S. A., Dunham M. M., Garay G., Mardones D., 2015, *ApJ*, 803, 22
- Price D. J., 2011, SPLASH: An Interactive Visualization Tool for Smoothed Particle Hydrodynamics Simulations, Astrophysics Source Code Library [ascl:1103.004](https://ui.adsabs.org/abs/2011ascl...1103004P)
- Price D. J., Tricco T. S., Bate M. R., 2012, *MNRAS*, 423, L45
- Pudritz R. E., Ouyed R., Fendt C., Brandenburg A., 2007, Reipurth B., , Jewitt D., Keil K., eds, *Protostars and Planets V*, University of Arizona Press, Tucson, p. 277
- Qiu K., Zhang Q., 2009, *ApJ*, 702, L66
- Qiu K., Wyrowski F., Menten K. M., Güsten R., Leurini S., Leinz C., 2011, *ApJ*, 743, L25
- Reipurth B., 1989, *Nature*, 340, 42
- Reipurth B., Bally J., Devine D., 1997, *AJ*, 114, 2708
- Reipurth B., Devine D., Bally J., 1998, *AJ*, 116, 1396
- Richer J. S., Shepherd D. S., Cabrit S., Bachiller R., Churchwell E., 2000, in Mannings V., Boss A. P., Russell S. S., eds, *Protostars and Planets IV*, University of Arizona Press, Tucson, p. 867
- Ridge N. A., Moore T. J. T., 2001, *A&A*, 378, 495
- Safron E. J. et al., 2015, *ApJ*, 800, L5
- Samal M. R., Chen W.-P., Takami M., Jose J., Froebrich D., 2018, preprint ([arXiv:1803.11413](https://arxiv.org/abs/1803.11413))

- Santiago-García J., Tafalla M., Johnstone D., Bachiller R., 2009, *A&A*, 495, 169
- Scott D. W., 1992, *Multivariate Density Estimation*
- Seifried D., Banerjee R., Klessen R. S., Duffin D., Pudritz R. E., 2012, in Capuzzo-Dolcetta R., Limongi M., Tornambè A., eds, *Astronomical Society of the Pacific Conference Series Vol. 453, Advances in Computational Astrophysics: Methods, Tools, and Outcome*. p. 391
- Shakura N. I., Sunyaev R. A., 1973, *A&A*, 24, 337
- Shu F. H., 1977, *ApJ*, 214, 488
- Shu F. H., Adams F. C., 1987, in Appenzeller I., Jordan C., eds, *IAU Symposium Vol. 122, Circumstellar Matter*. p. 7
- Shu F. H., Lizano S., Ruden S. P., Najita J., 1988, *ApJ*, 328, L19
- Stamatellos D., Whitworth A. P., Bisbas T., Goodwin S., 2007, *A&A*, 475, 37
- Stamatellos D., Hubber D., Whitworth A., 2011a, in Qain S., Leung K., Zhu L., Kwok S., eds, *Astronomical Society of the Pacific Conference Series Vol. 451, 9th Pacific Rim Conference on Stellar Astrophysics*. p. 213 preprint([arXiv:1109.2100](https://arxiv.org/abs/1109.2100))
- Stamatellos D., Whitworth A. P., Hubber D. A., 2011b, *ApJ*, 730, 32
- Stamatellos D., Whitworth A. P., Hubber D. A., 2012, *MNRAS*, 427, 1182
- Stojimirović I., Snell R. L., Narayanan G., 2008, *ApJ*, 679, 557
- Tabone B. et al., 2017, *A&A*, 607, L6
- Tafalla M., Santiago J., Johnstone D., Bachiller R., 2004, *A&A*, 423, L21
- Tan J. C., Beltrán M. T., Caselli P., Fontani F., Fuente A., Krumholz M. R., McKee C. F., Stolte A., 2014, in Beuther H., Klessen R. S., Dullemond C. P., Henning T., eds, *Protostars and Planets VI*, University of Arizona Press, Tucson, p. 149
- Tomida K., 2014, *ApJ*, 786, 98
- Tomida K., Okuzumi S., Machida M. N., 2015, *ApJ*, 801, 117
- Walch S., Naab T., Whitworth A., Burkert A., Gritschneider M., 2010, *MNRAS*, 402, 2253
- Walch S., Whitworth A. P., Girichidis P., 2012, *MNRAS*, 419, 760
- Wang L.-Y., Shang H., Su Y.-N., Santiago-García J., Tafalla M., Zhang Q., Hirano N., Lee C.-F., 2014, *ApJ*, 780, 49
- Whitworth A. P., Bhattal A. S., Francis N., Watkins S. J., 1996, *MNRAS*, 283, 1061
- Wu P.-F., Takakuwa S., Lim J., 2009, *ApJ*, 698, 184
- Wurster J., Price D. J., Bate M. R., 2016, *MNRAS*, 457, 1037
- Wurster J., Bate M. R., Price D. J., 2018, *MNRAS*, 475, 1859
- Ybarra J. E., Barsony M., Haisch K. E., Jr., Jarrett T. H., Sahai R., Weinberger A. J., 2006, *ApJ*, 647, L159
- Zhang M. et al., 2013, *A&A*, 553, A41
- Zhu Z., Hartmann L., Gammie C., 2009a, *ApJ*, 694, 1045
- Zhu Z., Hartmann L., Gammie C., McKinney J. C., 2009b, *ApJ*, 701, 620
- Zhu Z., Hartmann L., Gammie C. F., Book L. G., Simon J. B., Engelhard E., 2010a, *ApJ*, 713, 1134
- Zhu Z., Hartmann L., Gammie C., 2010b, *ApJ*, 713, 1143

This paper has been typeset from a $\text{\TeX}/\text{\LaTeX}$ file prepared by the author.