

As part of its campaign in support of the development of Home Zones in UK residential areas, LGN invited submissions as part of this year's Street Design competition to illustrate what such a Zone could look like and what special features it should incorporate.

Although there were insufficient entries to form the basis of a representative competition category, one particularly project stood out. Submitted by Mike Biddulph of the Department of Civic Design at the University of Liverpool, the project, illustrated here, provided a range of concepts which those who will be designing Home Zones in the future will need to consider.

As reported on Page 1 of this edition of LGN, the DETR has now named nine pilot projects around the country which, over the next three years, will be working to make Home Zones a reality.

LGN reproduces the Liverpool University design here as a contribution to that valuable debate.

HOME ZONE DESIGN RATIONALE

Mike Biddulph
Department of Civic Design
University of Liverpool



Houses, road narrowing, and a ramp form a gateway at the scheme entrance. This creates a sense of place, and slows down traffic

Houses are grouped in pairs to improve the visual quality of the scheme

Each house has a front garden which can be planted to soften the edge of the space



Houses are grouped to form corners. This gives the sub-spaces in the scheme a defined shape, and a sense of enclosure

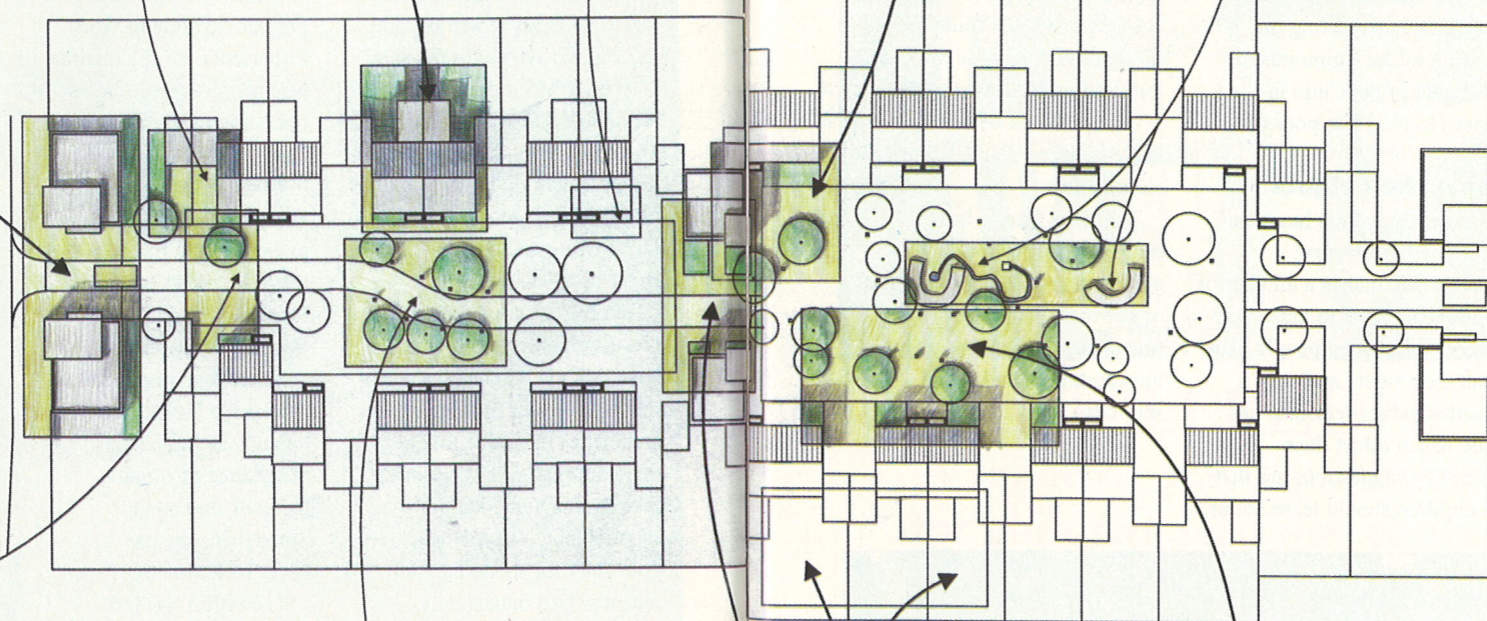


Within the square is a seating area, with deep seats which can also be used for playing. The curve allows children to cover the seating to make a den, or adults can sit in a group. A water pump and a tap are also provided for play or to help maintain the square. A channel is cut through the space so that the water will flow to the drain. This could be dammed to make pools. The tap would be accessible to adults

Houses have two parking spaces located next to the pedestrian area. The parking standard could be lower



The roadway is one way (3 metres wide), but could be two way without compromising the design idea. Trees are given adequate protection against manoeuvring cars and vandalism



The linear space has a continuous quality with the vehicular route defined by a change in surface material, trees, and a series of bollards that realign the road



Sympathetic materials are used to distinguish functions within the scheme, but without breaking up the space. Materials will have a warm colour and a fine texture

Each house has a private garden, and the scheme is low density. The density could be higher



The square has a continuous quality. The character of the space is defined by buildings and planting. Vehicular routes are between the trees, with a series of bollards defining some parts of the route. There is space for vehicles to turn in front of the houses. There is also ample room for fire and refuse vehicles

Gateway houses create a distinction between the two parts of the scheme



Axonometric of the prototype design for a new build Home Zone (left).

Objectives

- To create an environment where drivers are subservient to other users of the space
- To create a pleasant, quiet, domestic residential environment
- To produce an innovative scheme where the character of the environment is determined by built form and landscaping
- To produce a flexible idea that could be translated into a wide range of more specific schemes using a variety of house types.

- To illustrate a scheme which acknowledges the private sector's standard house types
- To create a scheme where emergency vehicles have easy and direct access
- To create a scheme which provides generous parking provision within individual plots
- To create a public realm that would be straightforward to maintain
- To create a public space that has scope for personalisation and planting in front of houses
- To adopt, otherwise, good principles of residential layout design.

Further information from Mike Biddulph, who is now at the Department of City and Regional Planning, University of Cardiff; tel: 01222-874 882. Email: Biddulph mj @ cardiff.ac.uk



Photography courtesy of Cardiff County Council

Citea lanterns on twin columns make a statement against the sky - an elegant in of city values.

At night their Sealsafe high performance provide the optimum lighting solution environmentally friendly and low maintenance.

Another innovative product design from Urbis



Urbis Lighting Limited, Telford Road, Houndmills, Basingstoke, Hampshire, RG21 6YW, England
Tel (01256) 354446
Fax (01256) 841314
Email: sales@urbislighting.com