

Table 1a. Numbers of items for 16 most abundant litter categories recorded at the 14 sites, ranked by abundance (100 m transect). (Text key: Au. Autumn; W. Winter; Sp. Spring; Su. Summer)

Location, Season & Litter item	1 String/cord <1cm diam					2 Plastic/polystyrene pieces >2.5cm					3 Plastic/polystyrene pieces <2.5cm					4 Drinks containers/drums				
	Au	W	Sp	Su	Au	Au	W	Sp	Su	Au	Au	W	Sp	Su	Au	Au	W	Sp	Su	Au
Fishing ports																				
Ardglass	102	44	166	122	87	21	59	40	39	38	40	50	40	50	29	28	9	79	57	24
Kilkeel	25	13	40	72	93	335	108	117	45	110	70	75	83	29	0	109	179	226	272	97
Portavogie	20	14	85	45	54	91	104	78	45	40	109	31	124	87	28	31	75	130	4	3
High Energy																				
Rathlin	94	157	214	115	108	80	35	22	10	63	55	31	54	4	0	5	5	2	0	2
Runkerry	9	13	1	20	8	98	33	45	32	39	231	51	86	37	34	3	7	10	0	1
White Park	105	65	0	6	22	17	24	47	13	33	83	36	148	23	33	8	2	1	5	9
Estuaries																				
Minearny	0	0	2	3	0	5	18	8	5	1	13	11	25	9	0	19	8	13	20	4
Hazelbank	5	0	1	0	0	7	8	6	3	2	0	4	3	0	1	7	6	3	3	4
Rostrevor	5	1	5	0	4	15	21	23	8	35	7	46	22	5	14	41	29	28	0	34
Low energy																				
Ballyhornan	70	47	132	130	191	110	54	43	61	97	38	65	52	70	87	14	32	15	35	56
Ballywalter	1	6	82	12	4	2	39	14	2	3	0	30	3	7	4	0	1	3	0	0
Cloughy	10	20	22	45	4	28	24	3	4	5	30	9	5	5	7	0	13	1	1	3
Drains	5	0	7	5	3	9	5	21	10	1	5	10	18	3	3	10	3	10	2	0
Tyrella	38	125	114	32	21	0	45	16	18	9	3	23	16	10	9	2	22	25	4	9

Location, Season & Litter item	5 Bottle caps					6 Crisp/sweet/food wrappers					7 Rope>1.5 cm					8 Drink cans				
	Au	W	Sp	Su	Au	Au	W	Sp	Su	Au	Au	W	Sp	Su	Au	Au	W	Sp	Su	Au
Fishing ports																				
Ardglass	7	0	19	23	2	31	22	48	27	27	43	15	55	17	22	37	17	36	43	33
Kilkeel	22	20	7	34	34	21	4	17	17	35	40	41	45	17	60	38	74	63	65	52
Portavogie	26	37	61	26	11	19	39	105	20	7	7	14	66	30	41	41	60	118	27	23
High Energy																				
Rathlin	77	23	14	1	36	36	32	17	7	58	6	21	21	14	19	0	6	2	2	0
Runkerry	123	57	31	57	42	19	12	4	8	5	11	4	0	10	5	0	12	1	10	1
White Park	15	21	31	9	0	23	11	7	9	13	16	19	27	8	9	3	1	0	1	1
Estuaries																				
Minearny	0	7	1	2	1	6	3	10	16	3	0	1	0	1	0	4	2	2	8	4
Hazelbank	0	0	0	0	2	2	1	6	2	3	3	4	3	3	1	3	3	1	1	4
Rostrevor	2	14	10	4	39	13	14	14	5	19	1	0	0	0	0	17	5	17	10	14
Low energy																				
Ballyhornan	22	42	48	45	96	53	26	25	50	63	35	42	33	52	99	4	8	3	8	7
Ballywalter	0	2	21	5	1	0	1	33	5	0	1	3	17	2	0	0	6	1	2	0
Cloughy	5	7	10	9	0	21	17	6	6	7	0	5	7	9	1	0	6	1	2	0
Drains	8	3	21	9	1	2	2	24	6	3	1	2	4	0	0	3	2	2	1	0
Tyrella	8	27	25	14	0	77	74	17	16	8	2	34	42	23	7	2	14	1	2	9

Continued...

Location, Season & Litter item	9 Cotton bud sticks					10 Other glass					11 Plastic carrier bags					12 Food containers				
	Au	W	Sp	Su	Au	Au	W	Sp	Su	Au	Au	W	Sp	Su	Au	Au	W	Sp	Su	Au
Fishing ports																				
Ardglass	0	0	14	1	1	5	170	112	17	1	12	5	12	16	10	0	0	26	14	3
Kilkeel	1	0	0	0	4	0	0	0	0	3	7	20	25	12	8	41	21	38	26	22
Portavogie	31	108	33	67	6	5	1	11	9	7	26	25	92	40	22	14	12	48	14	1
High Energy																				
Rathlin	3	30	9	0	59	0	0	0	0	0	23	10	19	0	12	1	5	1	0	1
Runkerry	92	35	21	41	21	0	1	0	0	0	2	2	0	0	0	20	21	3	2	10
White Park	23	1	58	22	8	0	0	0	0	0	0	2	0	6	4	9	2	0	0	0
Estuaries																				
Minearny	0	5	0	4	0	0	1	0	9	3	5	24	47	15	3	0	3	7	13	1
Hazelbank	0	0	0	0	0	300	0	2	40	0	8	4	22	3	6	0	0	4	0	3
Rostrevor	0	8	5	0	3	3	1	0	0	0	0	9	7	29	9	6	1	2	0	3
Low energy																				
Ballyhornan	3	22	12	8	30	1	0	0	0	0	7	8	13	5	3	19	6	16	9	15
Ballywalter	0	0	10	3	1	0	0	0	0	0	0	20	18	5	0	0	3	0	0	0
Cloughy	4	5	1	1	0	0	0	0	0	0	14	1	2	9	18	1	5	1	1	2
Drains	1	0	0	0	0	0	0	0	1	0	2	3	1	1	1	5	1	6	1	0
Tyrella	9	6	22	9	0	0	1	0	0	0	3	24	13	13	23	0	5	0	2	5

Location, Season & Litter item	13 Fishing line					14 Bottles					15 Tampons /sanitary towels					16 Heavy duty gloves				
	Au	W	Sp	Su	Au	Au	W	Sp	Su	Au	Au	W	Sp	Su	Au	Au	W	Sp	Su	Au
Fishing ports																				
Ardglass	18	3	7	169	20	127	90	80	46	80	0	1	4	3	1	7	4	26	15	11
Kilkeel	10	5	8	6	16	1	5	3	13	4	1	0	1	0	0	52	21	44	65	44
Portavogie	3	1	9	13	3	7	4	11	8	8	360	15	48	10	58	19	9	61	7	6
High Energy																				
Rathlin	6	7	5	4	15	0	0	1	1	0	1	0	2	0	0	0	0	0	1	0
Runkerry	7	3	1	1	3	3	0	0	0	0	5	0	0	0	5	0	0	0	1	1
White Park	4	4	4	1	0	0	0	0	0	2	5	0	0	0	5	0	0	0	0	0
Estuaries																				
Minearny	0	1	0	0	1	4	0	8	15	8	0	1	0	0	0	0	1	0	0	0
Hazelbank	0	0	0	0	0	0	0	20	12	2	3	41	2	0	1	0	0	0	0	1
Rostrevor	1	0	4	1	3	7	1	5	6	3	1	0	3	1	1	0	0	0	0	0
Low energy																				
Ballyhornan	57	2	5	6	46	0	3	0	0	1	2	11	0	2	2	10	3	5	15	11
Ballywalter	0	0	6	3	2	0	0	0	0	1	0	2	0	0	0	1	8	1	0	0
Cloughy	2	0	1	2	2	0	1	0	0	0	3	1	0	0	0	0	2	0	0	1
Drains	1	0	2	0	0	0	2	2	0	0	3	0	7	1	0	0	2	0	0	0
Tyrella	1	10	15	6	2	0	0	0	1	0	0	4	1	0	0	0	7	4	1	6

Table 1b. Total litter amounts found and percentage of plastics.

LOCATION	Autumn		Winter		Spring		Summer		Autumn	
	Total	%	Total	%	Total	%	Total	%	Total	%
Fishing ports										
Ardglass	918	53	741	51	1,074	60	690	61	372	63
Kilkeel	1,417	88	1,974	83	983	82	701	68	1,037	80
Portavogie	1,145	53	807	71	1,661	73	543	63	584	55
High energy										
Rathlin	496	96	473	92	494	94	184	93	492	85
Runkerry	1,108	89	372	87	245	90	244	75	933	96
White Park	469	91	305	92	627	87	81	93	100	81
Estuaries										
Minearny	218	66	152	78	200	79	189	59	28	0
Hazelbank	380	12	97	48	97	63	72	13	51	70
Rostrevor	169	78	174	85	245	74	65	64	189	83
Low energy										
Ballyhornen	677	94	568	84	577	90	466	93	1,050	94
Ballywalter	11	72	225	90	273	91	49	79	31	90
Cloughy	199	90	161	90	102	80	80	91	83	95
Drains	95	77	75	77	236	72	72	68	22	72
Tyrella	105	83	561	90	375	80	80	73	160	83
TOTAL/Av %	7,407	74	6,685	79	7,189	79	3,602	65	5,132	75

Table 2. Seasonal variation in litter item total numbers (n over 14 sites) in rank order for 16 most abundant litter categories (100 m transect survey). *Italic* figures indicate rank order.

Category: total/rank order	Autumn 2012		Winter '12/13		Spring 2103		Summer 2013		Autumn 2013	
String/cord <1cm diam. n= 2,735 1	89	<i>3</i>	507	<i>2</i>	945	<i>1</i>	607	<i>1</i>	587	<i>1</i>
Plastic/Polystyrene pieces >2.5cm n= 2,514 2	881	<i>1</i>	577	<i>1</i>	491	<i>4</i>	295	<i>4</i>	270	<i>3</i>
Plastic/Polystyrene pieces <2.5cm n= 2,397 3	691	<i>2</i>	472	<i>3</i>	679	<i>2</i>	339	<i>3</i>	216	<i>6</i>
Drink containers/drums n= 1,919 4	277	<i>6</i>	391	<i>4</i>	546	<i>3</i>	424	<i>2</i>	281	<i>2</i>
Bottle caps n= 1,287 5	245	<i>8</i>	270	<i>5</i>	299	<i>7</i>	238	<i>5</i>	235	<i>4</i>
Crisp/lolly/sweet/food wrappers n= 1,210 6	252	<i>7</i>	213	<i>7</i>	333	<i>5</i>	194	<i>7</i>	218	<i>5</i>
Rope >1cm diam. n= 1,083 7	166	<i>9</i>	205	<i>9</i>	320	<i>6</i>	187	<i>8</i>	205	<i>7</i>
Drink cans n= 932 8	152	<i>11</i>	213	<i>7</i>	250	<i>8</i>	170	<i>9</i>	147	<i>8</i>
Cotton buds n= 861 9	157	<i>10</i>	220	<i>6</i>	203	<i>9</i>	156	<i>10</i>	125	<i>9</i>
Other glass n= 704 10	314	<i>5</i>	175	<i>10</i>	125	<i>13</i>	76	<i>15</i>	14	<i>15</i>
Plastic carrier bags n= 542 11	84	<i>15</i>	101	<i>12</i>	191	<i>10</i>	93	<i>14</i>	73	<i>13</i>
Food containers (pots, sachets, etc.) n= 538 12	146	<i>12</i>	87	<i>13</i>	152	<i>11</i>	82	<i>13</i>	71	<i>14</i>
Fishing line n= 538 12	110	<i>13</i>	36	<i>15</i>	67	<i>16</i>	212	<i>6</i>	113	<i>10</i>
Bottles n= 496 14	50	<i>16</i>	107	<i>11</i>	130	<i>12</i>	102	<i>12</i>	107	<i>11</i>
Tampons/applicators/ Sanitary towels n= 479 15	362	<i>4</i>	21	<i>16</i>	70	<i>15</i>	18	<i>16</i>	8	<i>16</i>
Heavy duty gloves n= 431 16	89	<i>14</i>	54	<i>14</i>	96	<i>14</i>	105	<i>11</i>	87	<i>12</i>

Table 3. Seasonal variation in litter item total numbers (totals over 14 sites) in rank order, for 9 of the most abundant litter categories (1 km strandline survey). Bold, *Italic* figures indicate rank order

Category: total/rank order	Autumn 2012	Winter '12/13	Spring 2013	Summer 2013	Autumn 2013
Heavy duty gloves (752) 1	5 <i>9</i>	0 <i>9</i>	250 (215@Kilkeel) 1	277 (165@Kilkeel) 1	220 (85@Kilkeel) 1
Large plastic pieces (707) 2	289 1	68 3	101 2	161 3	179 2
Rope (592) 3	83 3	119 1	75 4	188 2	127 3
String/cord (392) 4	46 8	37 7	36 9	154 4	119 4
Strapping bands (363) 5	74 5	72 2	59 5	90 5	68 6
Cloth (323) 6	96 2	60 5	29 8	88 6	50 8
Wood (322) 7	49 7	60 5	82 3	74 7	57 7
Net pieces etc. (292) 8	81 4	32 8	48 6	50 9	81 5
Metal (277) 9	63 6	68 3	43 7	73 8	30 9

Table 4. Seasonal variation in litter item total numbers (totals over 14 sites) in rank order, for 9 of the most abundant litter categories (1 km strandline survey) at locations. Site key: BH Ballyhornan; BW Ballywalter; PV Portavogie: Fishing ports, normal font; Low energy sites, italic, NE high energy sites, bold, Estuarine sites, underlined.

Category/Rank	Autumn 2012	Winter '12/13	Spring 2013	Summer 2013	Autumn 2013
Gloves 1.	<i>Tyrella</i> 5		Ardglass 22 <i>BH</i> 12 Kilkeel 215	Ardglass 23 <i>BH</i> 41 Kilkeel 165 PV 25 <i>BW.</i> 13	Ardglass 26 <i>BH</i> 42 Kilkeel 85 PV 6 <i>Tyrella</i> 50
Large plastic pieces 2.	Ardglass 23 <i>BH.</i> 28 Kilkeel 25 PV 28 Rathlin 11 <u>Rostrevor 38</u> <u>Minearny 8</u>	Ardglass 18 <i>BH.</i> 20 Kilkeel 29 PV 6 <u>Rostrevor 26</u> <u>Minearny 37</u>	Kilkeel 21 PV 9 Rathlin 10 <u>Rostrevor 20</u> <u>Minearny 19</u> <u>Hazelbank 12</u>	Ardglass 4 <i>BH.</i> 10 Kilkeel 10 PV 3 Rathlin 27 <u>Minearny 1</u> <i>Cloughy</i> 14 <i>BW.</i> 22 <i>Tyrella</i> 24	Kilkeel 11 PV 11 Rathlin 30 <u>Rostrevor 20</u> <u>Minearny 19</u> <i>Cloughy</i> 13 <i>BW.</i> 30 <i>Tyrella</i> 43
Rope 3.	Ardglass 23 <i>BH.</i> 18 Kilkeel 18 <i>Cloughy</i> 11 Rathlin 9 <i>Tyrella</i> 7	Ardglass 16 <i>BH.</i> 20 Kilkeel 29 Rathlin 9 <i>Tyrella</i> 9	Ardglass 13 <i>BH.</i> 8 Kilkeel 14	Ardglass 60 <i>BH.</i> 20 Kilkeel 20 PV 8 <i>Cloughy</i> 9 Rathlin 28	Ardglass 49 <i>BH.</i> 31 Kilkeel 8 Rathlin 12 <i>Tyrella</i> 16
String/cord 4.	Ardglass 23 <i>BH.</i> 9 Kilkeel 18 Rathlin 10	Ardglass 6 <i>BH.</i> 10	Ardglass 6 <i>BH.</i> 6 Kilkeel 10 <i>Tyrella</i> 10	Ardglass 81 <i>BH.</i> 18 Kilkeel 4 PV 7 <i>Cloughy</i> 16 Rathlin 6	Ardglass 82 <i>BH.</i> 6 Kilkeel 6 Rathlin 13 <i>Tyrella</i> 8
Strapping bands 5.	Ardglass 28 <i>BH.</i> 13 Kilkeel 9	Ardglass 13 <i>BH.</i> 17 Kilkeel 14 Rathlin 7 <i>Tyrella</i> 7	Ardglass 4 <i>BH.</i> 5 Kilkeel 9 PV 5 <i>Tyrella</i> 11	Ardglass 22 Kilkeel 19 Rathlin 10	Ardglass 11 <i>BH.</i> 11 Kilkeel 6 Rathlin 16 <i>Tyrella</i> 16
Cloth, e.g. Clothing, shoes 6.	Ardglass 21 Kilkeel 11 PV 30 Rathlin 15	Ardglass 17 Kilkeel 21 <i>Tyrella</i> 9	Kilkeel 9 PV 11 <i>Tyrella</i> 9	PV 22 <u>Rostrevor 17</u> <i>Cloughy</i> 11 <i>Tyrella</i> 12	Ardglass 12 <i>BH.</i> 9 <i>Tyrella</i> 30

Wood, e.g. pallets, fish boxes 7.	Ardglass 9	Ardglass 21	Ardglass 13 <i>BH.</i> 13	Ardglass 6 <i>BH.</i> 15	Ardglass 8 <i>BH.</i> 7
	Kilkeel 7	Kilkeel 8	Kilkeel 17	Kilkeel 7	Kilkeel 14
	Rathlin 10		Rostrevor 24	Rostrevor 9	<u>Rostrevor 10</u>
	<i>Tyrella</i> 7				
Net pieces, broken fishing lines Etc. 8.	Ardglass 5 <i>BH.</i> 6	Ardglass 9 <i>BH.</i> 5	Ardglass 6 <i>BH.</i> 9	Ardglass 9 <i>BH.</i> 14	Ardglass 21 <i>BH.</i> 21
	Kilkeel 5	Kilkeel 7	Kilkeel 15	Kilkeel 11	Kilkeel 2
	PV 6	PV 3	PV 4	PV 8	PV 5
	Rathlin 4 <i>Cloughy</i> 1 <i>Tyrella</i> 3	Rathlin 2 <i>Cloughy</i> 1 <i>Tyrella</i> 2	Rathlin 1 <i>Cloughy</i> 2 <i>Tyrella</i> 5	Rathlin 1 <i>Cloughy</i> 16 <i>Tyrella</i> 8	Rathlin 7 <i>Cloughy</i> 4 <i>Tyrella</i> 13
Metal items e.g. oil drums 9.	Ardglass 18	Kilkeel 5	Kilkeel 11		Ardglass 4
	PV 8	PV 6	PV 5		Kilkeel 8
	<u>Minearny 10</u>	<u>Minearny 14</u>			PV 5
	<u>Rostrevor 16</u> Rathlin 12	<u>Rostrevor 6</u> Rathlin 4		Rathlin 10	

Table 5. Top 10 litter items found in recent surveys: Ocean Conservancy, 2016 (97 countries); Great British Beach Clean, 2016 (364 beaches); This paper.

ITEM	OC, 2016 Rank	GBBC, 2016 Rank	This paper Rank
Cigarette stubs	1	2	-
Plastic drink bottles	2	10	8
Food wrappers	3	3	6
Plastic caps/lids...	4	4	5
Straws	5	-	-
Plastic bags	6	-	-
Glass	7	7	10
Metal cans	-	-	5
Plastic/polystyrene pieces	-	1	2 and 3
Plastic grocery bags	8	-	-
String and cord	-	5	1
Cotton bud sticks	-	6	9
Rope	-	-	7
Drinks	-	-	4
Wet wipes	-	8	-
Fishing lines	-	9	-
Metal bottle caps	9	-	-
Plastic lids	10	-	-

Table 6. Overall percentage of litter items found: this paper and Nelms *et al.* (2017).

ITEM	% this paper	% Nelms <i>et al.</i> (2017)	ITEM	% this paper	% Nelms <i>et al.</i> (2017).
Plastic	74	76	Metal	8	4
Rubber	1	2	Glass	3	3
Cloth	3	3	Pottery	1	neg
Wood	2	2	Sanitary ware	6	5
Paper	1	4	Medical & Faeces	1	1



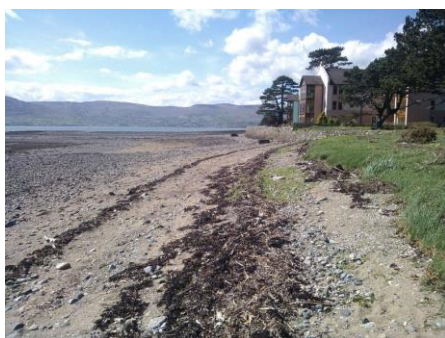
Figure 1a. Beach litter sampling site locations.



a) Ardglass



b) Ballyhornan



c) Rostrevor



d) White Park Bay

Figure 1b. Examples of the four diverse area locations:

a) Fishing Port; b) East coast site; c) Estuarine site; d) North coast site.

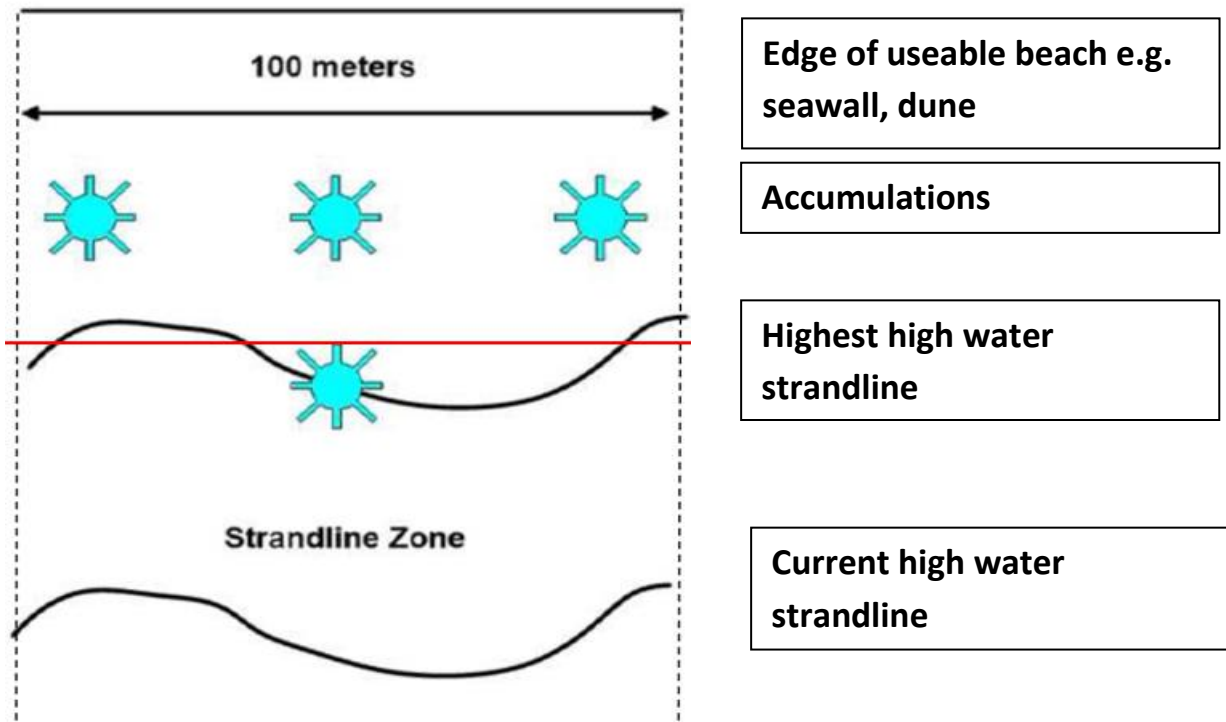


Figure 2. Beach litter survey zones (adapted from EA/NALG, 2000).

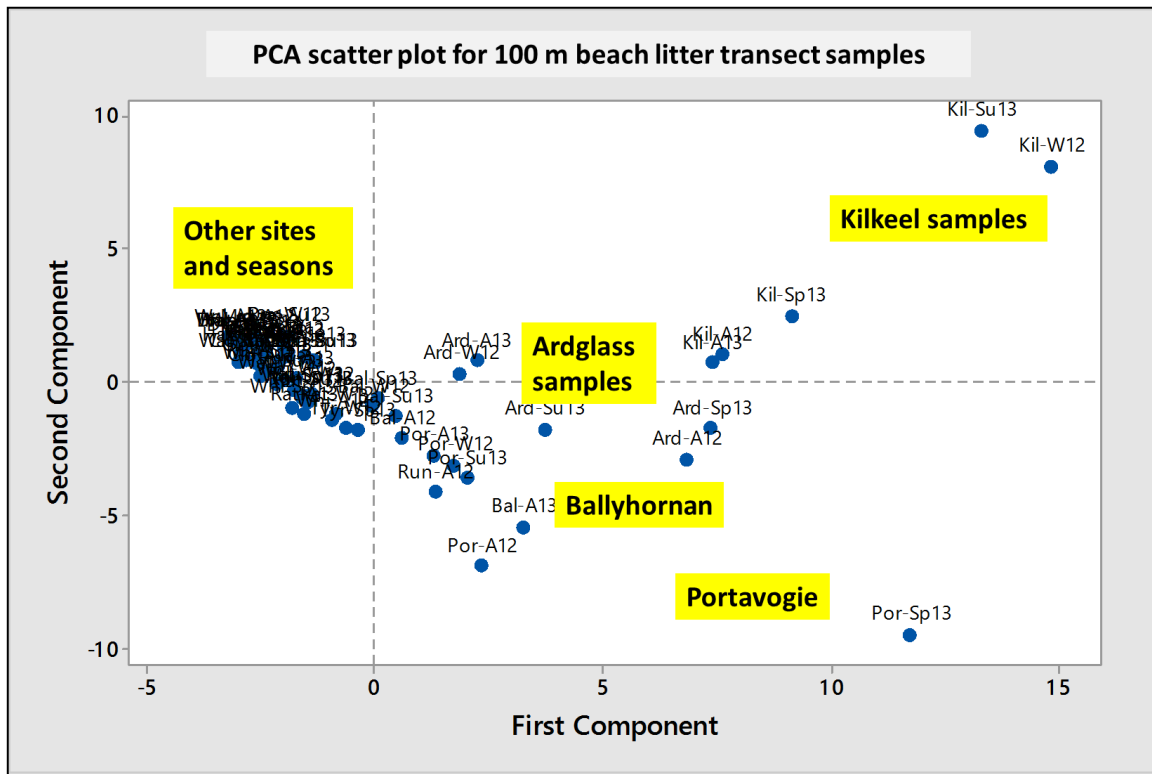


Figure 3a. Scatter plot: 70 sites/seasons; components 1 vs 2 (PCA; correlation coefficient; 61 litter categories; 100 m transects). Fishing port sites separate from others, indicating distinct composition of their litter items, regardless of season. Sample labels denote Site, Season, Year (e.g. Kil-Su13: Kilkeel Summer 2013; Por-Sp13: Portavogie Spring 2013; Ard-A12: Ardglass Autumn 2012).

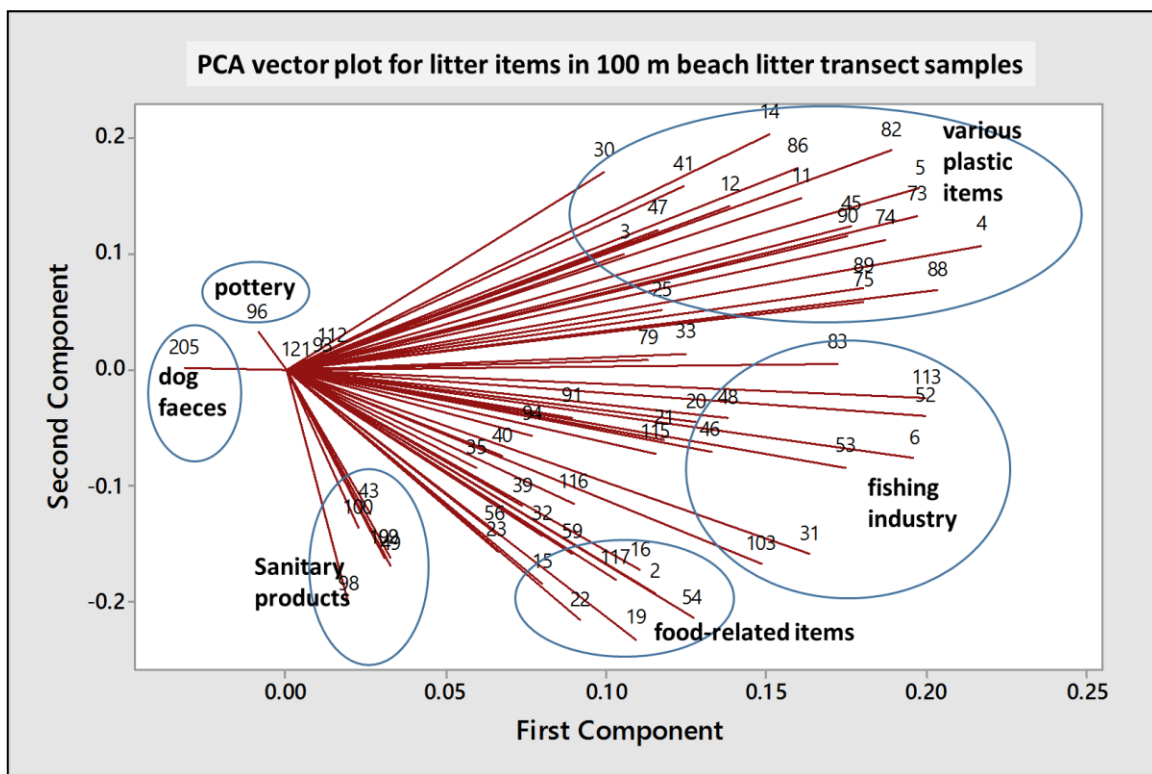


Figure 3b. Vector plot: 61 litter categories (variables); components 1 vs 2 (PCA; correlation coefficient; 100 m transects). Orientation of the numbered vectors relates to the relative composition of litter items in samples.

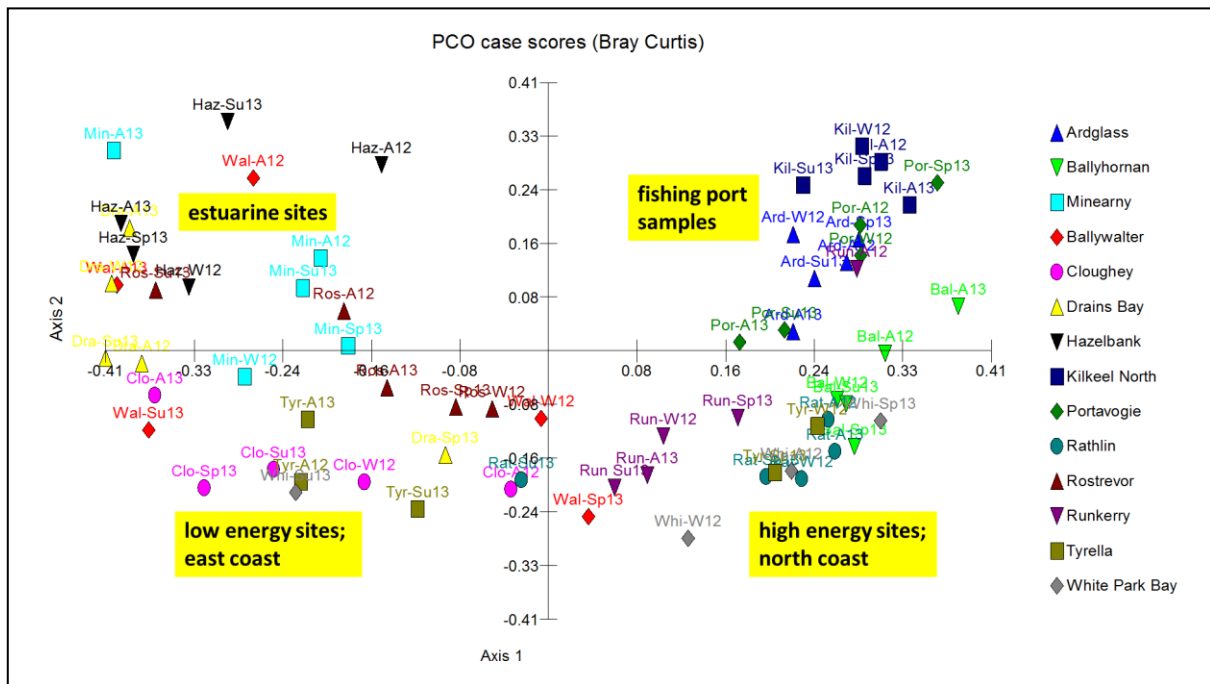


Figure 4. Scatter plot: 70 sites/seasons; axes 1 vs 2 (PCO; Bray-Curtis coefficient; 100 m transects). Sites are distributed by human activity and/or geophysical factors, due to litter abundance. Sample labels denote Site, Season, Year (e.g. Haz-Su13: Hazelbank Summer 2013; Clo-Sp13: Cloughy Spring 2013; Kil-W12: Kilkeel Winter 2012; Bal-A13: Ballyhorman Autumn 2013; Wal-A12: Ballywalter Autumn 2012).

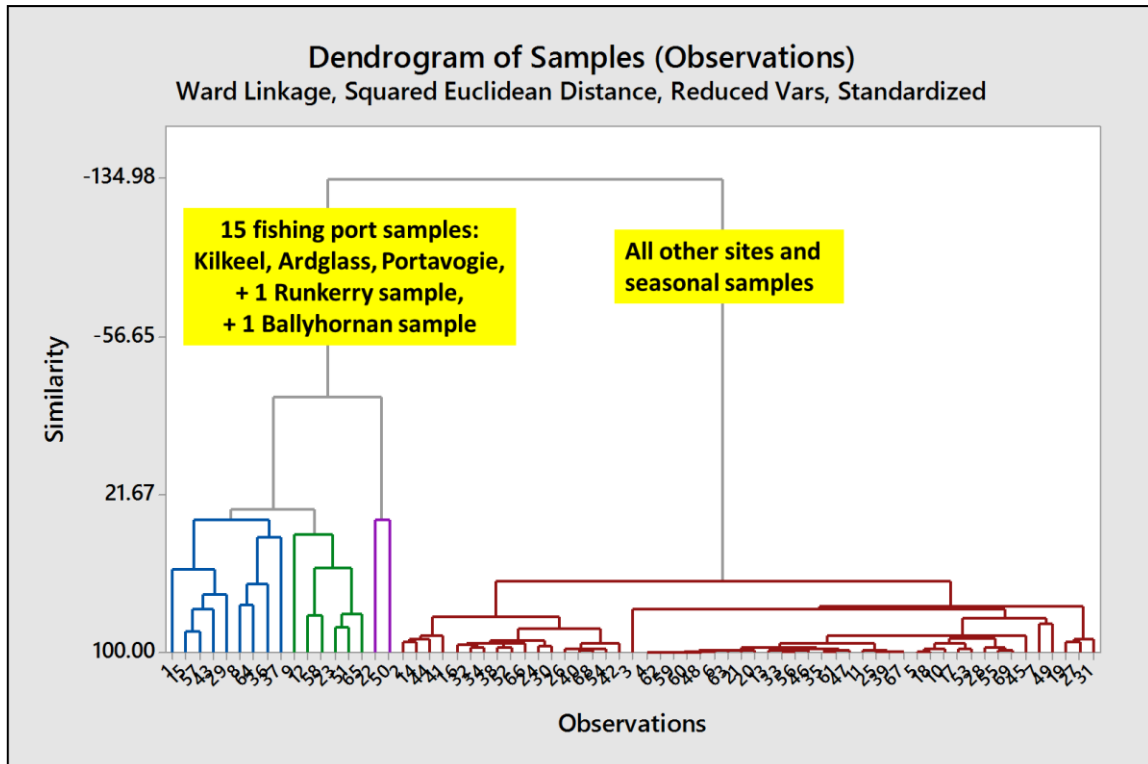


Figure 5. Cluster dendrogram: 70 sites/seasons; (Ward linkage; 61 standardized litter categories; 100 m transects). Fishing port sites (Kilkeel, Ardglass, Portavogie) separate from others, indicating distinct composition of their litter items, regardless of season. Sample numbers (listed on x-axis) show no clear separation between clusters, apart from the above.

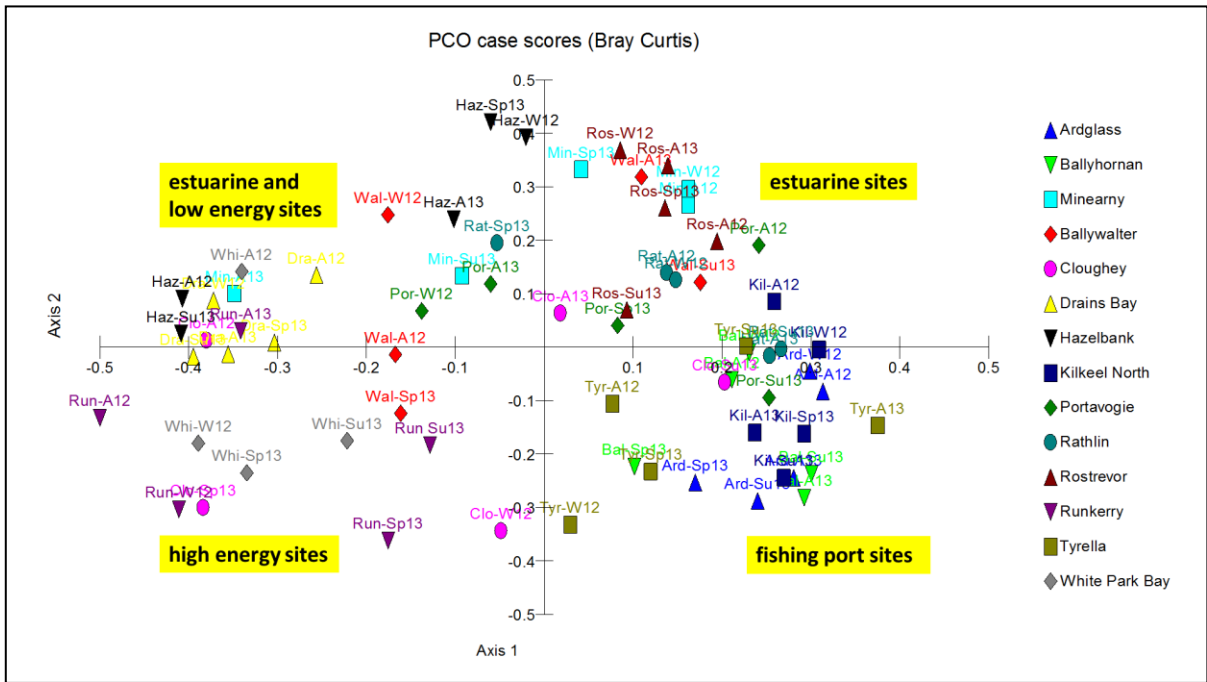


Figure 6. Scatter plot: 70 sites/seasons; axes 1 vs 2 (PCO; Bray-Curtis coefficient; 22 categories; 1 km strand-line). Sites are distributed by human activity and/or geophysical factors, due to litter abundance. Sample labels denote Site, Season, Year (e.g. Haz-Su13: Hazelbank Summer 2013; Clo-Sp13: Cloughy Spring 2013; Kil-W12: Kilkeel Winter 2012; Bal-A13: Ballyhorman Autumn 2013; Wal-A12: Ballywalter Autumn 2012).

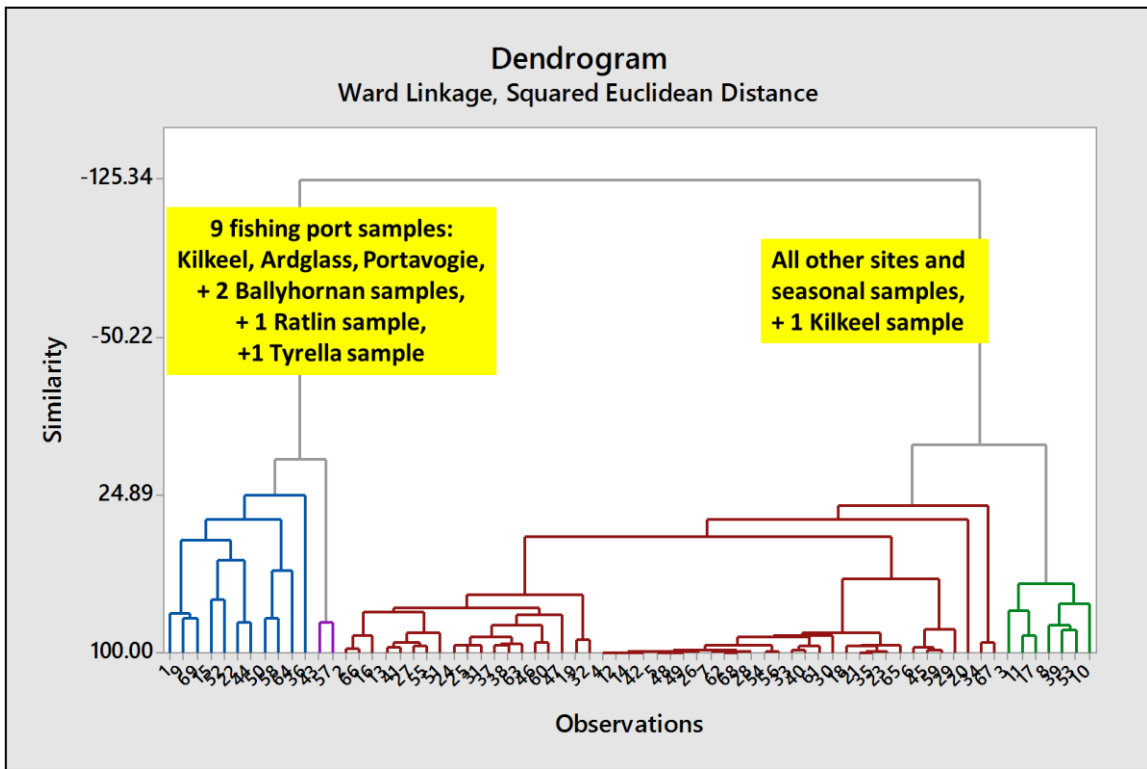


Figure 7. Cluster dendrogram: 70 sites/seasons; (Ward linkage; 22 standardized litter categories; 1 km strand-line). Fishing port sites separate from others, indicating distinct composition of their litter items, regardless of season. Sample numbers (listed on x-axis) show no clear separation between clusters, apart from the above.

Appendix A. OSPAR LITTER ID table (reduced 61 categories for analysis).

	OSPAR ID	
Plastic	2	Bags (including supermarket)
Plastic	3	Small plastic bags, e.g. freezer bags
Plastic	112	Plastic bag ends
Plastic	4	Drinks (bottles/containers/drums)
Plastic	5	Cleaner (bottles/containers/drums)
Plastic	6	Food (e.g. fast food, pots, tubs, sachets)
Plastic	11	injection gun container
Plastic	12	Other bottles, containers and drums
Plastic	14	Car parts
Plastic	15	Caps/lids
Plastic	16	Cigarette lighters
Plastic	19	Crisp/sweet/lolly/sandwich wrappers
Plastic	20	Toys/party poppers/fireworks/dummies
Plastic	21	Cups
Plastic	22	Cutlery/trays/straws
Plastic	23	Fertiliser/animal feed bags
Plastic	25	Gloves (light weight)
Plastic	113	Gloves (heavy duty)
Plastic	30	Plastic sheeting from Mussel Culture (Tahitians)
Plastic	31	Rope diameter > 1 cm
Plastic	32	String & cord diameter < 1 cm
Plastic	115	Fishing net & net pieces < 50 cm
Plastic	116	Fishing net & net pieces > 50 cm
Plastic	33	Tangled fishing nets/rope/cord/string
Plastic	35	Fishing line (anglers)
Plastic	39	Strapping bands
Plastic	40	Industrial packaging/sheeting
Plastic	41	Fibre glass
Plastic	43	Shotgun cartridges
Plastic	45	Foam sponge
Plastic	117	Plastic/polystyrene pieces < 2.5 cm
Plastic	46	Plastic/polystyrene pieces > 2.5 cm
Plastic	47	Plastic/polystyrene pieces > 2.5 cm < 50 cm
Plastic	48	Other (specify)
Rubber	49	Balloons/balloon string
Rubber	52	Tyres and belts
Rubber	53	Other rubber pieces (specify)
Cloth	54	Clothing
Cloth	56	Sacking
Cloth	59	Other (specify)
Wood	73	Paint brushes
Wood	74	Other wood pieces < 50 cm
Wood	75	Other wood pieces > 50 cm
Metal	79	Electric appliances
Metal	82	Food cans
Metal	83	Industrial scrap
Metal	86	Paint tins
Metal	88	Wire/wire mesh/barbed wire
Metal	89	Other metal pieces < 50 cm
Metal	90	Other metal pieces > 50 cm
Glass	91	Bottles
Glass	93	Other glass items
Pottery	94	Construction material e.g. tiles
Pottery	96	Other ceramic/pottery items
Sanitary	98	Cotton bud sticks
Sanitary	99	Towels/panty liners/backing strips
Sanitary	100	Tampon applicators/tampons
Sanitary	102	Other (specify)
Medical	103	Containers/tubes/pill packet
Faeces	121	Bagged dog faeces
Faeces	205	Non Bagged dog faeces