

This is an Open Access document downloaded from ORCA, Cardiff University's institutional repository: <https://orca.cardiff.ac.uk/id/eprint/149432/>

This is the author's version of a work that was submitted to / accepted for publication.

Citation for final published version:

Zheng, Gangfeng, Azorin-Molina, Cesar, Wang, Xuejia, Chen, Deliang, McVicar, Tim R., Guijarro, Jose A., Chappell, Adrian, Deng, Kaiqiang, Minola, Lorenzo, Kong, Feng, Wang, Shuo and Shi, Peijun 2022. Rapid urbanization induced daily maximum wind speed decline in metropolitan areas: a case study in the Yangtze River Delta (China). *Urban Climate* 43, 101147. 10.1016/j.uclim.2022.101147

Publishers page: <https://doi.org/10.1016/j.uclim.2022.101147>

Please note:

Changes made as a result of publishing processes such as copy-editing, formatting and page numbers may not be reflected in this version. For the definitive version of this publication, please refer to the published source. You are advised to consult the publisher's version if you wish to cite this paper.

This version is being made available in accordance with publisher policies. See <http://orca.cf.ac.uk/policies.html> for usage policies. Copyright and moral rights for publications made available in ORCA are retained by the copyright holders.



# **Rapid urbanization likely induces daily maximum wind speed decline in metropolitan areas: A case study in the Yangtze River Delta (China)**

**Supplementary materials**

Gangfeng Zhang<sup>1,2,3</sup>, Cesar Azorin-Molina<sup>4</sup>, Xuejia Wang<sup>5</sup>, Deliang Chen<sup>6</sup>, Tim R. McVicar<sup>7,8</sup>, Jose A. Guijarro<sup>9</sup>, Adrian Chappell<sup>10</sup>, Kaiqiang Deng<sup>6</sup>, Lorenzo Minola<sup>6</sup>, Feng Kong<sup>11</sup>, Shuo Wang<sup>3</sup>,  
Peijun Shi<sup>\*1,2,12,13</sup>

*Surnames (or family names) are underlined*

<sup>1</sup> State Key Laboratory of Earth Surface Processes and Resource Ecology, Beijing Normal University, Beijing 100875, China;

<sup>2</sup> Academy of Disaster Reduction and Emergency Management, Ministry of Emergency Management and Ministry of Education, Beijing Normal University, Beijing 100875, China;

<sup>3</sup> Department of system science, Beijing Normal University, Beijing, China

<sup>4</sup> Centro de Investigaciones sobre Desertificación, Consejo Superior de Investigaciones Científicas (CIDE-CSIC), Montcada, Valencia, Spain;

<sup>5</sup> Key Laboratory of Western China's Environmental Systems of Ministry of Education, College of Earth and Environmental Sciences, Lanzhou University, Lanzhou, China

<sup>6</sup> Regional Climate Group, Department of Earth Sciences, University of Gothenburg, Gothenburg, 40530, Sweden;

<sup>7</sup> CSIRO Land and Water, Canberra, ACT, Australia;

<sup>8</sup> Australian Research Council Centre of Excellence for Climate Extremes, Canberra, ACT, Australia;

<sup>9</sup> State Meteorological Agency, Delegation of the Balearic Islands, Palma de Mallorca, Spain;

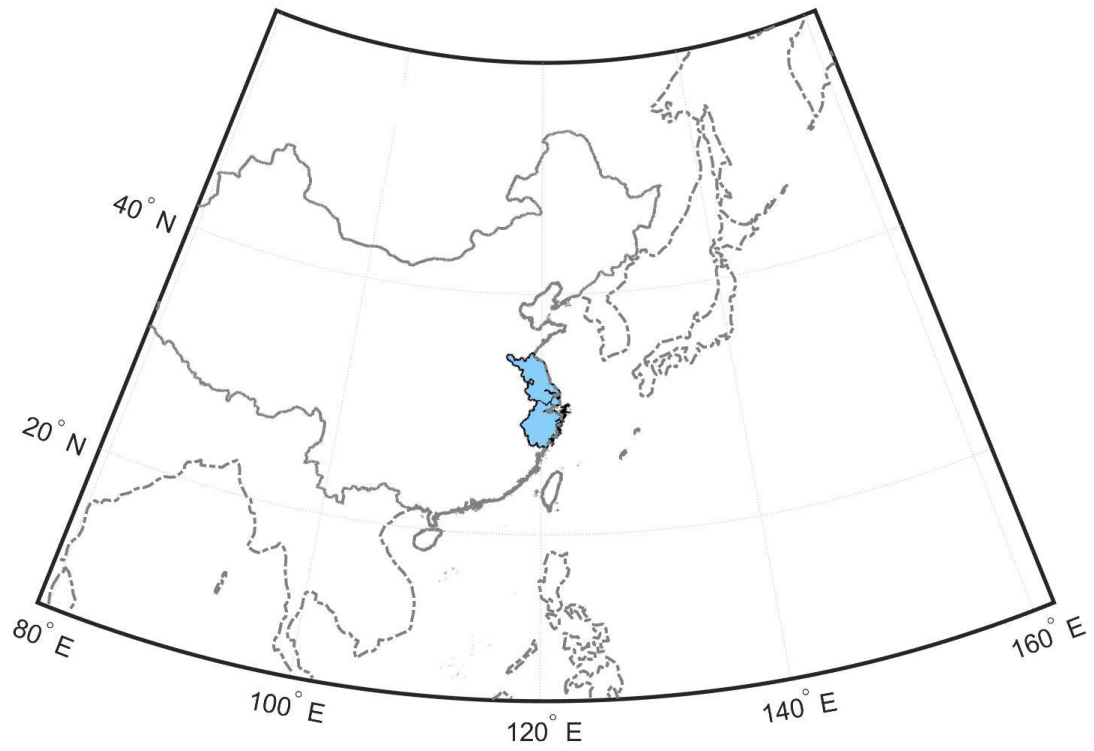
<sup>10</sup> School of Earth and Environmental Sciences, Cardiff University, Wales; UK

<sup>11</sup> College of Humanities and Development Study, China Agricultural University, Beijing, China

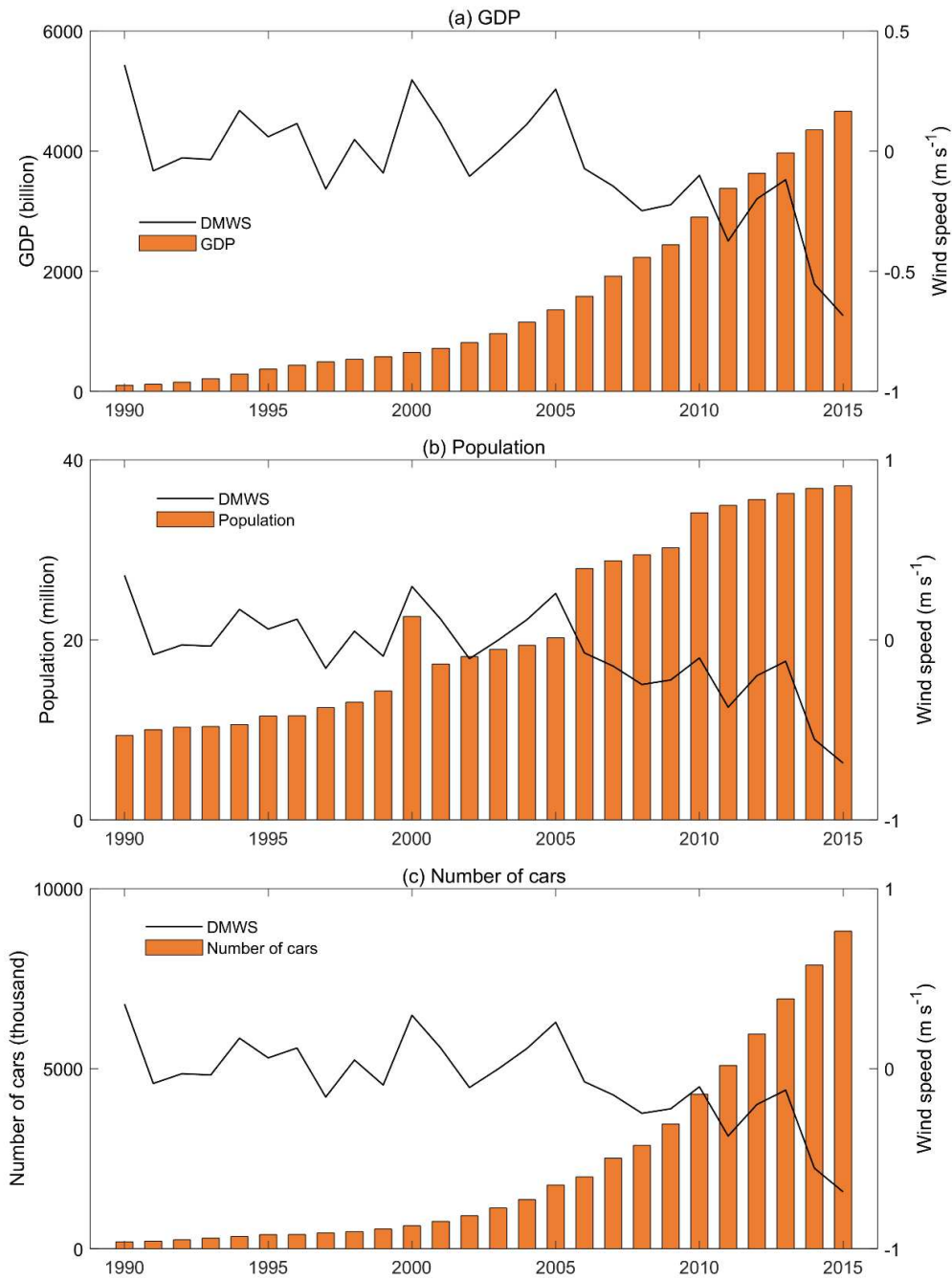
<sup>12</sup> Key Laboratory of Environmental Change and Natural Disaster of Ministry of Education, Beijing Normal University, Beijing, China;

<sup>13</sup> Department of Geography, Qinghai Normal University, Qinghai, China

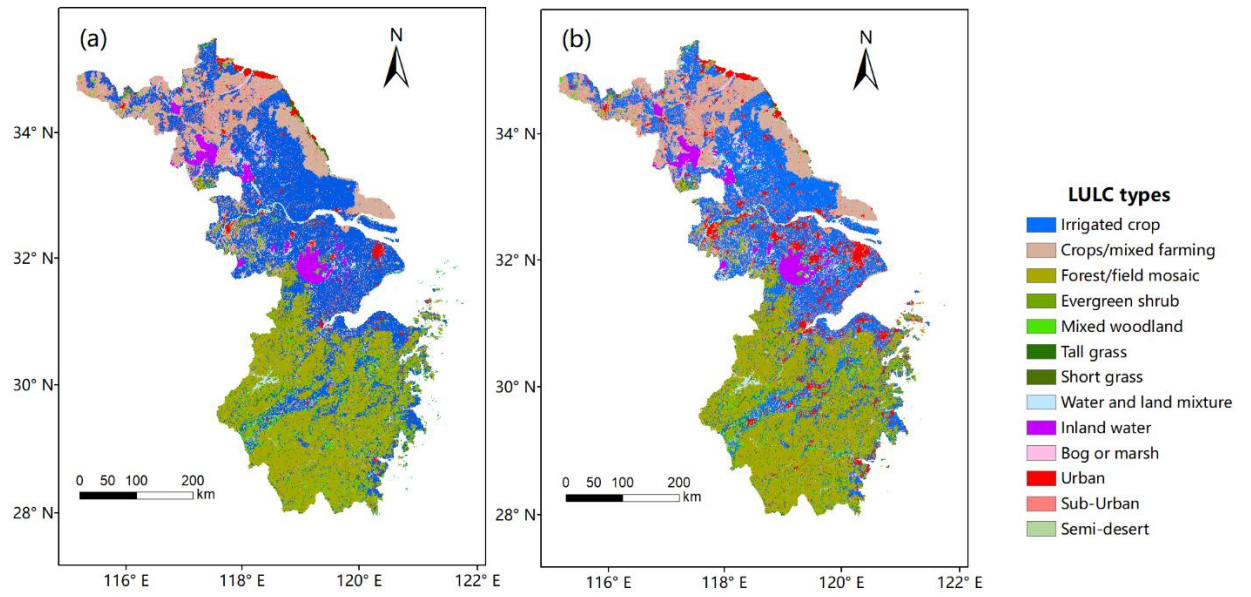
**\*Corresponding author** at: State Key Laboratory of Earth Surface Processes and Resource Ecology, Beijing Normal University, Beijing 100875, China.



**Figure S1.** Domain of RegCM4 sensitivity experiments. The area filled with light blue color is the Yangtze River Delta. China's border is shown in a continuous line and nearby coastlines are shown as a dashed line.



**Figure S2.** Change of (a) gross domestic production (GDP), (b) urban population (UP) and (c) number of civil motor vehicles (NCMV) from 1990–2015 in the Yangtze River Delta. Note that UP is only available for Shanghai and Jiangsu provinces. Regionally averaged DMWS anomaly from the 111 station observations (the anomaly is calculated at each station then averaged) is also displayed in the right axis.



**Figure S3.** Distribution of varied LULC types over Yangtze River Delta in 1990 and 2015. The legend on the right applies to both parts.