

The effects of musical instrument training on fluid intelligence and executive functions in healthy older adults: A systematic review and meta-analysis

Fionnuala Rogers^{*}, Claudia Metzler-Baddeley

Cardiff University Brain Research Imaging Centre (CUBRIC), School of Psychology, Maindy Road, Cardiff University, Cardiff, United Kingdom

ARTICLE INFO

Keywords:

Cognitive aging
Executive function
Motor skill learning
Music training
Neurological music therapy

ABSTRACT

Intervention studies combining cognitive and motor demands have reported far-transfer cognitive benefits in healthy ageing. This systematic review and meta-analysis evaluated the effects of music and rhythm intervention on cognition in older adulthood. Inclusion criteria specified: 1) musical instrument training; 2) healthy, musically-naïve adults (≥ 60 years); 3) control group; 4) measure of executive function. Ovid, PubMed, Scopus and the Cochrane Library online databases were searched in August 2023. Data from thirteen studies were analysed ($N = 502$ participants). Study quality was assessed using the Cochrane Risk of Bias tool (RoB 2; Sterne et al., 2019). Random effects models revealed: a low effect on inhibition ($d = 0.27, p = .0335$); a low-moderate effect on switching ($d = -0.39, p = .0021$); a low-moderate effect on verbal category switching ($d = 0.39, p = .0166$); and a moderate effect on processing speed ($d = 0.47, p < .0001$). No effect was found for selective visual attention, working memory, or verbal memory. With regards to overall bias, three studies were rated as “high”, nine studies were rated as having “some concerns” and one was rated “low”. The meta-analysis suggests that learning to play a musical instrument enhances attention inhibition, switching and processing speed in ageing.

1. Introduction

An increasingly ageing population has prompted a vast body of research on cognitive training programmes with the aim to maintain or restore cognitive functions in later adulthood (Corbett et al., 2015; Melby-Lervåg et al., 2016; Jaeggi et al., 2008; Holmes et al., 2019). Typical cognitive ageing is characterised by a slowing of “fluid” intelligence, which refers to the ability to process and learn new information, generate new solutions, and interact with novel environments (Harada et al., 2013), compared with “crystallised” intelligence, which refers to familiar skills and knowledge that accumulate throughout the lifespan (e.g., vocabulary and general knowledge; Park et al., 2001). Age-related decline in fluid abilities hampers other cognitive functions, notably executive functions (EF), i.e., higher-level cognitive processes involved in planning, problem-solving, and multi-tasking abilities, that largely (but not exclusively) rely on fluid abilities (Roca et al., 2014).

Fluid intelligence and EF have received particular attention within the cognitive training literature of ageing because they play an important role in an individual’s competence to live independently, carry out daily functions, have a good quality of life and engage in social and

meaningful activities (Diamond & Ling, 2016; Salthouse, 2012). For example, EF have been found to be significantly related to daily functioning (Vaughan & Giovanello, 2010) as measured with the Instrumental Activities of Daily Living (IADL; Fillenbaum, 1985), notably to performance-based rather than self-report IADL.

Thus, the primary focus of this meta-analysis was on the assessment of training effects on cognitive domains that are known to recruit fluid abilities and to be impacted by age, notably EF but also processing speed, visuo-spatial attention, and episodic memory. Processing speed refers to time taken to receive, process and respond to information in the environment (Salthouse, 2000). This ability begins to decline from midlife and continues to decrease with age, and a reduction in processing speed is a contributing factor to declines in other cognitive domains (Salthouse, et al., 2003, 2009), and is also associated with the need for assistance in daily activities (Bezdicek et al., 2016). Visuo-spatial attention refers to the ability to identify specific environmental information and ignore irrelevant information, and is impacted in ageing (Lezak et al., 2012). Episodic memory refers to recollection of events or information of a specific time and place (Harada et al., 2013). Episodic memory shows lifelong decline (Rönnlund, et al., 2005), and is

^{*} Corresponding author.

E-mail address: RogersF2@cardiff.ac.uk (F. Rogers).

<https://doi.org/10.1016/j.bandc.2024.106137>

Received 19 September 2023; Received in revised form 29 January 2024; Accepted 29 January 2024

Available online 9 February 2024

0278-2626/© 2024 The Authors. Published by Elsevier Inc. This is an open access article under the CC BY license (<http://creativecommons.org/licenses/by/4.0/>).

often measured in terms verbal memory, which is an individual's ability to encode, store and recall or recognize verbal information within a test session.

Fluid intelligence and EF abilities are thought to be negatively affected by ageing because they rely on optimal functioning of the prefrontal cortex (PFC) and its connected regions. According to the retrogenesis (first in last out) hypothesis (Raz, 2005), the PFC, as one of the late-maturing brain regions, is particularly susceptible to age-related grey and white matter atrophy (Resnick et al., 2003; Salat et al., 2004; Douaud et al., 2014). PFC structure and function (Liston et al., 2009; Cerqueira et al., 2007) and hence EF and fluid abilities, are also disproportionately impacted when a person is experiencing adverse life events, feeling sad, lonely, or in poor physical health (Diamond & Ling, 2016).

Attention switching/divided attention, inhibitory control of distracting information, and updating of information stored in working memory have been proposed as core EF components (Miyake et al., 2000) which decline in ageing (Cepeda et al., 2001; Spieler et al., 1996; Braver & West, 2011). In a large-scale longitudinal study of 354 number of participants between the ages of 10–86 years old, age-related EF decline was shown to commence in middle adulthood, with working memory capacity and inhibitory control showing reductions in as early as the third decade (Ferguson et al., 2021).

Previous attempts to enhance EF (most commonly working memory capacity) were often targeted through computerised training formats. Commercially available “brain training” programmes such as Lumosity (Lumos Labs Inc., San Francisco), Cogmed (Klingberg et al., 2005) and BrainHQ (Posit Science) have been widely used in an attempt to reduce or prevent cognitive decline in older adults. However, there is now a general consensus among researchers that such computerised training programmes have limited transfer effects (Holmes et al., 2019; Melby-Lervåg et al., 2016; Kelly et al., 2014; Dahlin et al., 2008), effect sizes of benefits on global cognition are low, and there is little evidence for long-term benefits (Gates et al., 2020). Computerised programmes may be unsuccessful because they tend to be unimodal or single-domain (Sutcliffe et al., 2020), and occur in “impoverished” computer learning environments, which do not mimic the complexity of real-world problems and therefore lack ecological validity (Moreau & Conway, 2014). Furthermore, computerised trainings tend to encourage single-domain strategies that cannot be transferred to other problems (i. e. do not encourage fluid abilities).

It has been argued that the brain has evolved for *movement*, rather than for *thinking alone*, and that EF have evolved as an extension of the motor control system to facilitate optimal interaction with the environment (Kozioł et al., 2012). Besides the PFC and connected cortical parietal areas, the cerebellum and basal ganglia, which have been traditionally associated primarily with motor control, are now widely recognised as playing an important role in EF (Stoodley, 2012; Strick et al., 2009; Baillieux et al., 2008; Hazy et al., 2006, 2007). Thus, the learning of new cognitive-motor skills which require a combination of multi-sensory-motor integration and interaction between complex cognitive processes may provide a more ecologically valid and hence a more effective approach in delivering far transfer effects than computerised programmes. This may be because such an approach may mimic the complex and fluid planning and problem-solving abilities needed in everyday life. In response, there have been calls for more “ecological” and holistic approaches to cognitive training which combine both cognitive and motor demands in real-life settings (Moreau & Conway, 2014; Bernard & Seidler, 2014; Diamond & Ling, 2016).

1.1. Music-based approaches to cognitive training

Accumulating evidence suggests that music-based approaches to cognitive intervention, that combine complex cognitive and motor demands, may hold potential as interventions to enhance EF. Therapeutic instrumental music performance (TIMP; Elliott, 1982), for instance, is a

form of neurologic music therapy (NMT) that uses musical instruments to exercise movement patterns. In stroke rehabilitation, TIMP-based therapies have been shown to improve motor abilities and EF (mental flexibility) (Rodríguez-Fornells et al., 2012; Haire et al., 2021; Koshimori & Thaut, 2019).

Rhythmic auditory stimulation (RAS) interventions, which use metronomes or music as external triggers for movements (Koshimori & Thaut, 2023), have been used to improve motor symptoms and quality of life in Parkinson's disease patients (Pantelyat et al., 2016; see Burrai et al., 2021; Lee & Ko, 2023 for reviews), and in stroke patients (Street et al., 2020). There is also preliminary evidence in Huntington's disease (HD), that rhythmic stimulation (drumming) may improve EF and white matter microstructure in the genu of the corpus callosum which connects the PFC of both hemispheres (Metzler-Baddeley et al., 2014) and in connections between the right Supplementary Motor Area (SMA) and the putamen (Casella et al., 2020). A systematic review found that benefits to global cognition were associated with microstructural changes in HD following rhythm training (Schwartz et al., 2019). The key mechanism of these rhythmic-based trainings which led to cognitive enhancement is thought to be the stimulation of basal ganglia and cerebellar networks and their connections to fronto-parietal regions associated with EF (Casella et al., 2020).

Playing a musical instrument is considered a complex multimodal task which requires the integration and synchronization of auditory, visual, motor, and somatosensory information and places high demands on fluid EF processes (Herholz & Zatorre, 2012). Learning to play a musical instrument, such as the piano, also involves learning to read musical notation, known as sight-reading. Sight-reading necessitates the coordination of bimanual fine motor responses based on complex visual stimuli, the simultaneous monitoring of auditory information produced, and the adjustment of motor responses based on auditory and somatosensory feedback (Jäncke, 2009). Furthermore, playing music involves modulation of neuronal plasticity via the reward circuitry, including the basal ganglia (Herholz & Zatorre, 2012), which involves neurochemistry which may reinforce learning (Chanda & Levitin, 2013; Ferreri et al., 2019). Multi-sensory integration, EF demands, and reward feedback may all be important contributors to neuroplastic effects observed due to training (Herholz & Zatorre, 2012). Taken together, learning to read and play music could be an optimal task for targeting feedforward mechanisms associated with cortico-cerebellum network involved in EF.

All of these mechanisms may contribute to differences in cognition and brain structure and function that have been reported between musicians and non-musicians, which are reviewed elsewhere (Herholz & Zatorre, 2012; Jäncke, 2009; Schlaug, 2001). Notably, cross-sectional studies suggest that learning to play an instrument can enhance cognition in later life (e.g., Verghese et al., 2003). In a correlational study, older musicians were found to perform better in nonverbal memory as well as naming and executive processing tasks compared with non-musicians whilst controlling for age, education, history of physical exercise, age of instrument acquisition and number of years of formal training (Hanna-Pladdy & MacKay, 2011). Further, Moussard et al. (2016) found that older musicians out-performed a group of age- and education-matched non-musicians on a GoNoGo task, with task accuracy linked with N2 amplitude measured with electroencephalography (EEG) in musicians, which suggests an executive control advantage. In addition to the variability of the definition used for “musician” across these studies (e.g. various degrees of expertness, professionalism, practice hours, and age of commencement), cross-sectional research presents challenges in establishing cause-and-effect relationships due to possible confounding effects such as education, socio-economic status and amount of music experience. This systematic review and meta-analysis was conducted because recent years have seen an increase in randomised controlled intervention studies investigating the potential of short- or long-term musical training interventions to benefit cognition in older music novices.

1.2. Previous meta-analytical work and the current study

A recent systematic review and *meta-analysis* conducted by [Ma et al., \(2023\)](#) investigated the effects of interventions involving rhythmic exercise or physical activities performed to music, (e.g., dancing), on physical and cognitive function. They concluded that such rhythmic movement interventions improved physical function, global cognition, and quality of life in healthy older adults. However, no effect was found on executive function. The *meta-analysis* included only three rhythmic music studies, and did not include any studies using TIMP or learning to play an instrument. A key difference between exercise to rhythm interventions and learning to play a musical instrument is the manipulation of an object using fine or gross motor control, and the consequential auditory and somatosensory feedback which can continuously shape motor behaviour ([Herholz & Zatorre, 2012](#)). As outlined above, taxing complex sensory-motor integration and feedback loops may be a crucial training component for enhancing EF.

A previous *meta-analysis* on musical instrument training suggested that learning to play the piano may protect against cognitive decline in ageing ([Roman-Caballero et al., 2018](#)). A subsequent *meta-analysis* conducted on older adults and adults with mild cognitive impairment (MCI) concluded that musical training has promise as a cognitive intervention to deliver far-transfer benefits in processing speed, attention control and working memory capacity in healthy older adults due to active, rather than receptive engagement involved in the learning of a new instrument ([Kim & Yoo, 2019](#)). It was also found that cognitive demands varied depending on the instrument trained. Percussion interventions which emphasized improvisation and multitasking were categorized as “immediate involvement” and were found to be more common in populations with MCI. “Sustained engagement” interventions involved playing the piano and the application of memorized information (music theory) to concurrent reading and playing of a score. However, at time of publishing, only four intervention studies in healthy older adults were available for inclusion in these two *meta-analytic* papers ([Roman-Caballero et al., 2018](#); [Kim & Yoo, 2019](#)).

The current systematic review and *meta-analysis* is timely and novel as recently larger-scale, higher quality studies in older adults without any diagnosis of cognitive impairment have been published, which provide sufficiently large sample sizes to review the impact of learning to play an instrument on EF in healthy older adults. EF were chosen as the primary measures of interest (specifically, switching, inhibition and working memory capacity and updating) due to the important role they play in daily functioning and the hypothesized underlying neural links between motor skill learning and EF outlined above. Other fluid abilities that are negatively impacted by age were also examined: processing speed was analyzed given that age-related response slowing tends to impact performance in other cognitive domains ([Salthouse, 2010](#); [Revie & Metzler-Baddeley, 2023](#)) and previous *meta-analytic* evidence suggests that musical training may help improve processing speed ([Kim & Yoo, 2019](#)). Visuospatial attention and verbal memory were also examined given the potential for transfer of playing an instrument to these domains as evinced by cross-sectional research ([Sluming et al., 2007](#); [Franklin et al., 2008](#)).

2. Method

2.1. Search strategy and Inclusion criteria

This systematic review and *meta-analysis* was conducted in line with recommendations from Preferred Reporting Items for Systematic Reviews and Meta-Analysis (PRISMA, [Page et al., 2021](#)). A completed PRISMA checklist is available in the [Supplementary Material](#). Electronic databases Ovid, PubMed, Scopus and the Cochrane Library were searched for intervention studies involving training on a musical instrument in healthy older adults, published in English. References lists were also hand-searched for relevant studies. Inclusion and exclusion

criteria for studies to be included in the *meta-analysis* are presented in [Table 1](#).

The following search equation was used in the databases search in August 2023: (ageing OR aging OR older*) AND (music training OR piano training OR keyboard training OR music intervention) AND (cogniti* OR executive function*) without any time restrictions. The review was not pre-registered. EndNote referencing software was used to organise the literature from the four databases and to remove duplicates. After 621 duplicates were removed, titles and abstracts of the remaining 1,581 articles were screened by the first author (FR) to exclude articles which did not meet the inclusion criteria ([Fig. 1](#)).

Fifteen studies met inclusion criteria for *meta-analyses*. Where information was missing from a paper, corresponding authors were emailed to request the data ([MacRitchie et al., 2020](#); [Bugos et al., 2022](#); [Lister et al., 2023](#)). Two studies could not be included because descriptive statistics were unavailable ([Lister et al., 2023](#); [Bugos et al., 2022](#)). Data were collected from eligible studies by FR and transferred into an Excel spreadsheet. See [Table 2](#) for study design information. The domains of EF (switching, inhibition, working memory capacity and updating, verbal fluency), processing speed, visuospatial attention, and verbal memory were investigated. With regards to verbal fluency, three sub-domains were investigated: letter fluency, category fluency and category switching. Letter fluency refers to the ability to generate words beginning with a given letter within a time limit (e.g., words beginning with “F”). Category fluency refers to the number of words generated which belong to a given category (e.g., supermarket items). Category switching refers to the number of words generated when alternating between two given categories (e.g., alternating between vegetables and furniture items each time a word is spoken). Verbal memory was examined in three ways: 1) total number of words recalled after five trials where the same word-list was presented for each trial; 2) immediate/short-delay recall, where verbal information was tested shortly after it was presented or 3) long-delay recall, where verbal information was requested following an approximate 20-minute delay. Specific tests used to assess EF, processing speed, visuospatial attention and verbal memory in each study are reported in [Table 3](#).

Table 1
Inclusion and exclusion criteria for studies to be entered in *meta-analysis*.

Inclusion Criteria	Exclusion Criteria
Intervention studies which required the production of music using a pitched and/or percussion instrument(s)	Music-based interventions which did not require training in a pitched or percussion instrument (e.g., singing, dancing or exercise to music interventions)
Cognitively healthy adults as assessed by screening for cognitive impairment and/or neurological disorders over the age of 60	Studies that exclusively examined participants with diagnoses of cognitive and/or neurological impairment or younger adults, adolescents or children
In addition to the above, participants who were musically-naïve, defined as having < 3 years of formal training on a musical instrument and were not involved in any other music-based activities	Inclusion of participants with > 3 years formal music training or those who were actively involved in regular music-based activities
Inclusion of a control group (either RCT or matched control groups)	Correlational studies or within-subjects designs without a comparative control
Inclusion of at least one outcome measure of EF from a test designed to measure one of the following domains: distractor inhibition (Stroop test); attention switching (Trail-Making Test Part B); working memory capacity (digit span tests) and updating (N-back); verbal fluency (letter, category, and category switching tests)	Lack of EF outcome measure

EF, executive functions; RCT, randomised controlled trial.

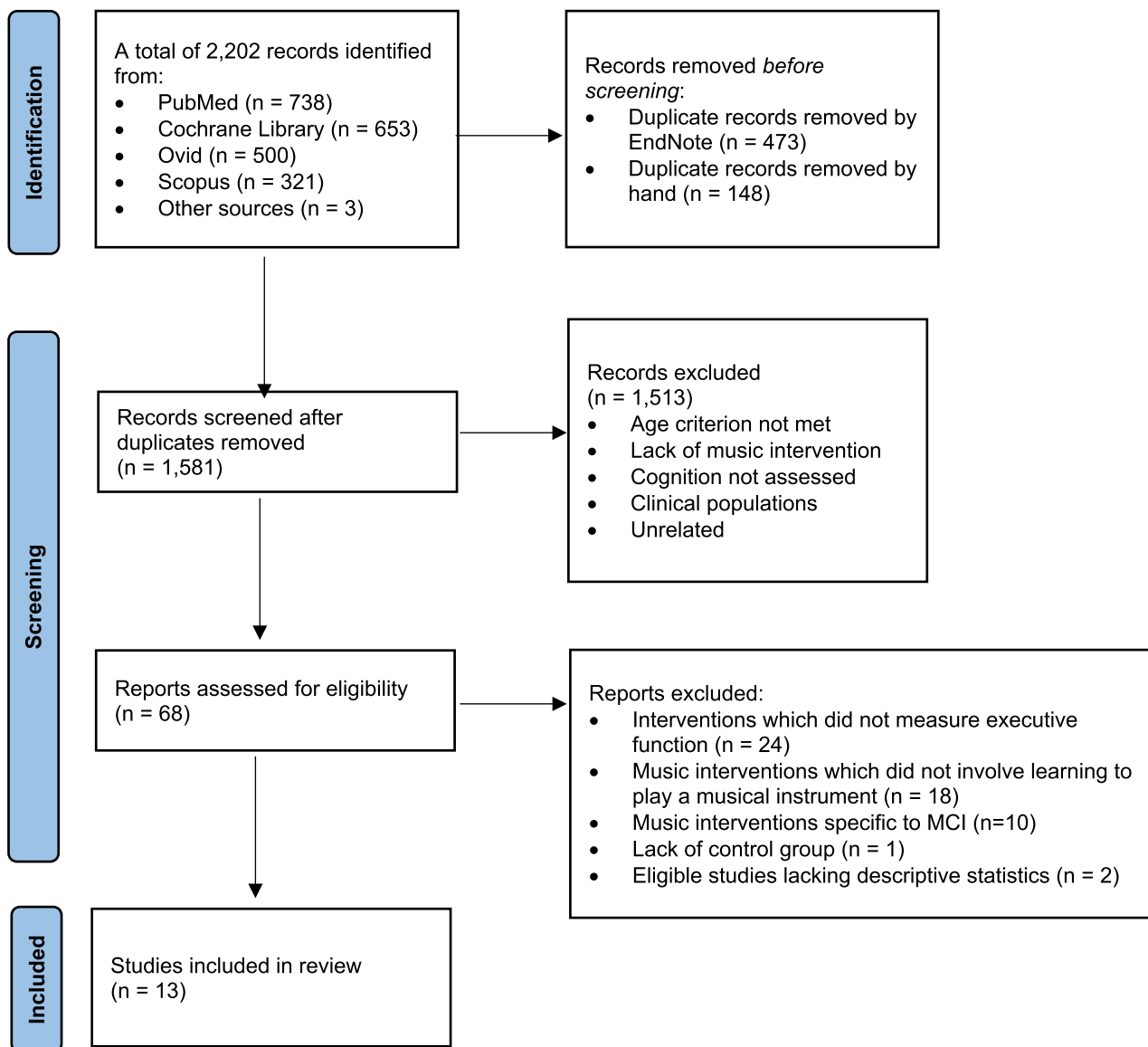


Fig. 1. PRISMA flowchart of screening strategy for studies to be included in the *meta*-analysis.

2.2. Risk of bias assessment

The Cochrane Risk of Bias Tool (RoB2; Sterne et al., 2019) was used to assess the validity of the included studies. RoB2 requires the reviewer to answer a series of signalling questions in order to elicit information about specific study features which are relevant regarding risk of bias, and then provides risk of bias judgment which is generated by a computer algorithm. Studies are evaluated as “low”, having “some concerns” or “high” on the following six criteria: random sequence generation; allocation concealment; blinding of participants; blinding of outcome assessment; incomplete outcome data; and selective outcome reporting. Overall study bias was judged as “low”, “some concerns” or “high” based on combined scores of these six categories. Judgements reported in this *meta*-analysis were based on evaluations by FR, combined with RoB2 algorithm. Overall bias was determined as low only when all six domains were scored as low.

2.3. Statistical analysis

Random-effects models were chosen for the *meta*-analyses because they control for differences in study methods and sample characteristics,

which could introduce heterogeneity among the true effects (Field & Gillett, 2010; Viechtbauer, 2010). This was relevant given the heterogeneous intervention parameters across the thirteen studies (see Table 2).

Effect sizes were calculated from the descriptive statistics reported in each study. Pooled Cohen’s *d* estimates were analysed for each of the cognitive domains measured using the metafor package in R (Viechtbauer, 2010). Effect sizes were considered as follows: low (0.2–0.4); moderate (0.5–0.7); or large (>0.8) (Cohen, 2013). Heterogeneity across studies was calculated using the I^2 statistic (Higgins & Thompson, 2002), and was determined as low, medium or high at 25, 50, or 75 %, respectively.

Additional exploratory analyses were undertaken for each cognitive domain. A “leave-one-out” sensitivity analysis (Viechtbauer & Cheung, 2010), whereby one study was removed from the analysis at a time, whilst pooled effect size was recalculated, was undertaken to determine the influence of each study on overall effect size for each cognitive domain.

Cohen’s *d* effect sizes were also calculated for the two individual studies which reported three-month follow-up data (Bugos et al., 2007; Bugos & Wang, 2022).

Table 2
Design details of music intervention studies in healthy older adults.

Year	Author	Study Design	N (Int/ Con)	Mean Age (Int/ Con)	Cognitive Screening tool	Intervention Type	Control Group(s)	Intervention intensity, frequency, duration
2007	Bugos et al.	RCT	16/15	71.4/ 69.6		Individualised piano training	No treatment	30 min, 1/week, 6 months, (min. 3 h practice per week)
2010	Bugos	Age- and IQ-matched active control	24/22	69.3/ 67.7	TICS	Group piano playing	Music Listening Intervention	45 min, 1/week, 16 weeks; (30 mins daily practice)
2013	Seinfeld et al.	Cluster sampling – Active control	13/16	69.3/ 69.6	MMSE	Group piano playing	Other leisure activities	90 min, 1/week, 4 months; 45mins practice 5 days per week (min. 4 h practice per week)
2015	Thorne	RCT	10/10	71.5/ 71.7	MMSE	Group piano playing	Music listening intervention	30 min, 1/week, 6 months (30 mins practice per day)
2017	Bugos & Kochar	Within-subjects (Subjects as own control)	34	70.79	TICS	Short-term, intense piano training	Subjects as own control (pre-test and then second pre-test after 2-week period)	3 h per day for 2 weeks (total 30 h)
2018	Biasutti & Mangiacotti	RCT (participants with MCI also included)	18/17	83.39/ 83.76	MMSE	Cognitive music training	Gymnastic activities	12 bi-weekly 70 min
2018	Degé & Kerkovius	RCT	8/7/9	77.9/ 76.6/ 77.5		Group drumming and singing training	Literature programme; no treatment	60 min, 1/week, 15 weeks
2019	Bugos	Age and IQ-matched active control groups	49/ 38/48	67.9/ 69.13/ 68.83	TICS	Group piano playing	Percussion group; Music listening course	45 min 1/week, 16 weeks (30 min practice per day or 3 h per week)
2020	Guo et al.	Pseudorandomized (fMRI)	27/26	73.3/ 72.9	MMSE	Keyboard Harmonica (R.H. only)	No treatment	60 min, 1/week, 4 months
2020	MacRitchie et al.	RCT	8/7	70.9	ACE-III	Group piano training: ensemble playing, Figure notes	Waitlist (no treatment)	60 min, 1/week, 10 weeks (30 mins practice per day)
2021	Dos Santos et al.	RCT	15/12	68.4/ 67.3	MMSE	Improvisation and percussion activities	Choir singing	60 min. 1/week, 8 weeks
2021	Kim & Yoo	RCT	10/10	78.8/ 70.2	MMSE	Rhythm-motor dual tasks	No treatment	30 min. 2/week, 8 weeks
2022	Bugos & Wang	RCT	30/ 35/50	67.2/ 69.29/ 67.64	TICS	Group piano playing	Computer-assisted cognitive training; no treatment	90 min, 2/week, 16 weeks (no outside practice)

ACE-III, Addenbrooke's Cognitive Examination-III (Hsieh et al., 2013); Con, control; fMRI, functional magnetic resonance imaging; Int, intervention; MCI, mild cognitive impairment; MMSE, Mini-Mental State Examination (Folstein et al., 1975); RCT, randomised controlled trial; TICS, Telephone Interview for Cognitive Status (Brandt et al., 1988),

3. Results

Thirteen studies were included in the analyses, one of which was a PhD dissertation, and it should be noted that this study was not published and peer-reviewed (Thorne, 2015). Following attrition in each study, a total of 502 participants were analysed. As not all thirteen studies examined all five of the cognitive domains of interest, the number of total samples for the meta-analyses for each cognitive domain ranged between 211 and 360 participants. For this reason, funnel plots were not created to assess publication bias for any cognitive domain tested, given that statistical power was too low to detect meaningful asymmetry in fewer than ten studies (Higgins et al., 2011). The pooled mean age across all studies was 71.95 years ($SD = 4.83$), ranging from 67.5 to 83.7 years old. All studies which were included in the analysis were conducted on healthy older adults (see Table 2 for cognitive screening tools used). One study included in the meta-analyses also included participants with MCI (Biasutti & Mangiacotti, 2018).

In three studies, piano training was compared with a music listening intervention which provided training in music appreciation and active listening skills (Bugos, 2010; Bugos, 2019, Thorne, 2015). For five studies, music intervention was compared with a passive, no-treatment control group (Bugos et al., 2007; Guo et al., 2021; Kim & Yoo, 2020; Bugos & Wang, 2022). One study used a waitlist design where one group was tested pre- and post- piano training, while the control group remained inactive during the intervention period. The control group later received the intervention after the second testing and were tested a

third time after they had received the intervention (MacRitchie et al., 2020). In one study, the intervention group acted as their own control, with testing occurring pre- and post- a two week no-treatment period, and then again after the piano training. However, the order was not counterbalanced across participants because of potential long-term effects of the intervention (Bugos & Kochar, 2017). Other studies compared music training with other leisure activities (Seinfeld et al., 2013), gymnastic activities (Biasutti & Mangiacotti, 2018) or choir participation (Dos Santos et al., 2020). For studies which included two control groups, effect sizes were calculated from control groups requiring no instrument training – a passive control group (Bugos & Wang, 2022; Degé & Kerkovius, 2018) or music listening intervention group (Bugos & Kochar, 2019), because these controls did not require learning a motor skill and were therefore comparable with control groups used in the other studies.

3.1. Risk of bias

Of the thirteen studies, nine studies used randomization in assigning participants to a music intervention group or a control group. Only five studies explicitly stated that outcome assessors were blind to group allocation. Attrition rates ranged from 20 to 34 %. Overall bias was rated as “high” for three studies and as “some concerns” for nine studies. One study was rated as having “low” overall bias. Overall percentages of studies with “high”, “some concerns” or “low” risk of bias are displayed in Fig. 2. Summary of risk of bias within each study for six domains of

Table 3
Cognitive domains tested and outcome measures used in each music intervention study.

Study	Executive Functions				Processing Speed	Visuospatial Attention	Verbal Memory		
	Switching	Inhibition	Verbal fluency	Working Memory			Total word-list recall after 5 trials	Immediate/Short-delay	Long-Delay
Bugos et al. (2007)	TMT-B	n/a	n/a	Digit span	Digit Symbols	TMT-A	n/a	n/a	n/a
Bugos (2010)	TMT-B	Stroop (error rates)	D-KEFS (LF, CF, CS)	n/a	PASAT	TMT-A	n/a	n/a	n/a
Seinfeld et al. (2013)	TMT-B	Stroop (correct responses)	n/a	Digit span	SDMT	TMT-A	n/a	n/a	n/a
Thorne (2015)	TMT-B	Stroop (error rates)	n/a	n/a	Digit symbols	TMT-A	CNS Vital signs	Immediate word-list recognition hits	Delayed word-list recognition hits
Bugos and Kochar (2017)	n/a	n/a	D-KEFS (LF, CF, CS)	n/a	WAIS-IV (coding and symbol search index scores)	n/a	RAVLT	Short-delay word-list recall (RAVLT)	Long-delay word-list recall (RAVLT)
Biasutti and Mangiacotti (2018)	n/a	n/a	LF	n/a	n/a	TMT-A	n/a	n/a	n/a
Degé and Kerkovius, (2018)	n/a	n/a	n/a	Digit span	n/a	n/a	n/a	Immediate word-list recall	n/a
Bugos (2019)	TMT-B	Stroop	D-KEFS (LF, CF, CS)	n/a	PASAT	TMT-A	n/a	n/a	n/a
Guo et al. (2021)	TMT-B		LF, CF	Digit span	n/a	TMT-A	n/a	Immediate story recall (WMS-LM I)	Delayed story recall (WMS-LM II)
MacRitchie et al. (2020)	TMT-B	n/a	n/a	n/a	n/a	TMT-A	n/a	n/a	n/a
Dos Santos et al. (2021)	n/a	n/a	LF	n/a	n/a	TMT-A	n/a	n/a	n/a
Kim and Yoo (2020)	TMT-B	n/a	n/a	n/a	n/a	TMT-A	n/a	n/a	n/a
Bugos and Wang (2022)	TMT-B	Stroop	D-KEFS (LF, CF, CS)	N-back	PASAT	n/a	RAVLT	n/a	n/a

CF, category fluency; CNS, Computerised Neurocognitive Assessment (CNS Vital Signs, Inc: Morrisville, NC); CS, category switching; D-KEFS, Delis-Kaplan Executive Function Systems (Delis et al., 2001); EF, executive functions; LF, letter fluency, PASAT, Paced Auditory Serial Addition Test (Gronwall, 1977); RAVLT, Rey Auditory Verbal Learning Test (Rey, 1941); TMT-A, Trail-Making Test (Part A); TMT-B, Trail-Making Test (Part B; Reitan & Wolfson, 2009); WAIS-IV, Wechsler Adult Intelligence Scale IV (Wechsler, 2008); WMS-LM, Wechsler Memory Scale – Logical Memory (Wechsler, 1987).

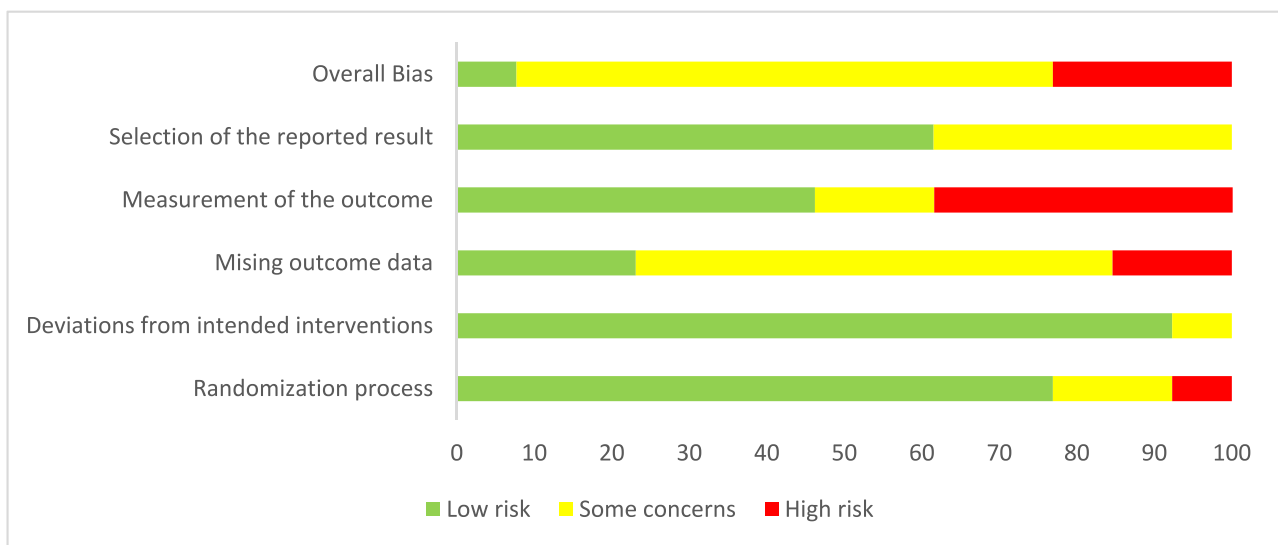
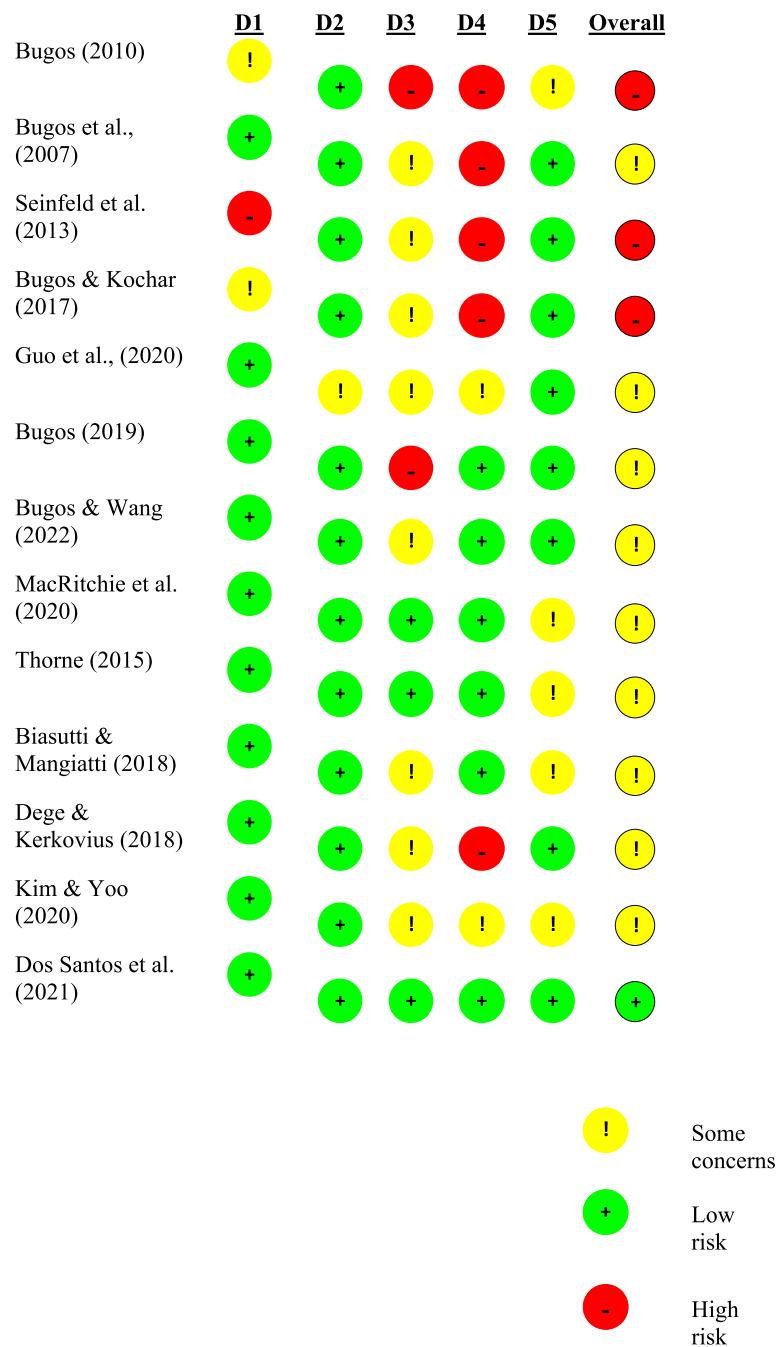


Fig. 2. Percentage risk of bias summary from Cochrane Risk of Bias tool (Stern et al., 2019).



D1: Randomisation process; D2: Deviations from the intended interventions; D3: Missing outcome data; D4: Measurement of the outcome; D5: Selection of the reported result

Fig. 3. Summary of risk of bias within each study for six domains of Cochrane RoB 2.

Cochrane RoB 2 is presented in Fig. 3.

3.2. Main findings

With regards to EF, statistically significant effect sizes were found for attention switching (low-moderate effect size), distractor inhibition

(low effect size), and the category switching verbal fluency subtest (low-moderate effect size). No statistically significant effect size was found for working memory capacity/updating or the other verbal fluency subtests (letter and category).

A significant moderate effect size was found for processing speed, but no significant effects were found for visuospatial attention, or any

measure of verbal memory (immediate, short- or long-delay measures).

Sensitivity analyses for all cognitive domains tested are reported in detail in the following subsections. Table 4 reports the full statistical models for each domain with statistically significant effect sizes indicated (**p* < .05, ***p* < .01 ****p* < .001). Forest plots for each domain are presented in Fig. 4 with statistically significant effect sizes indicated (**p* < .05, ***p* < .01 ****p* < .001).

3.2.1. Executive functions

3.2.1.1. Switching. Nine studies used TMT-B completion times or delta scores as a measure of attentional switching. However, one study (Bugos, 2010) did not report descriptive statistics. A random-effects model conducted on the remaining 8 studies revealed a moderate effect size (*d* = -0.42, *p* = .0143), with moderate heterogeneity (*I*² = 51.62 %). One study was rated as having overall “high” bias (Seinfeld et al., 2013), while the other six were rated as “some concerns”.

Notably, when the study rated as “high bias” (Seinfeld et al., 2013) was removed from the analysis, the effect size dropped to a low effect (*d* = -0.28, *p* = .0202) with low heterogeneity (*I*² = 4.53 %), thus suggesting a considerable impact on the model, and therefore this study was omitted.

In a final exploratory synthesis, one study (Guo et al., 2021) which required training in keyboard harmonica (an instrument played with one hand only – and therefore did not involve practice in bimanual coordination) was removed from the model. The final model, which included 6 studies, revealed a small-moderate effect size (*d* = -0.3868, *p* = .0021), with 0 % heterogeneity. This suggests that musical instrument interventions which require a switching attentional component from one hand to the other may show strongest transfer to TMT-B performance. This final model is presented in Table 4 and Fig. 4 (A).

3.2.1.2. Inhibition. Five studies measured inhibitory control using the incongruent condition of the Stroop test. Two of these studies were rated as “high” for overall bias (Bugos, 2010; Seinfeld et al., 2013), while the other three were rated as “some concerns”. The model which included these 5 studies revealed no effect, and was non-significant (*d* = 0.03, *p* = .9236), with high heterogeneity (*I*² = 76.63 %).

During the leave-one-out analysis, Thorne (2015) was found to have a substantial impact on the overall effect size and therefore omitted from the final model in Fig. 4 (B). The final model suggests a small, but statistically significant, effect size for inhibition (*d* = 0.27, *p* = .0335, *I*² = 0 %), but should be interpreted with caution given that two of the four

studies were rated high for overall bias.

3.2.1.3. Working memory capacity and updating. Four studies utilised digit span tasks as a measure of working memory capacity, and one study measured updating using the *N*-back task (see Table 3). One study was rated high for risk of bias (Seinfeld et al., 2013). A random effects model using data from these five studies revealed a moderate effect size which was not statistically significant (*d* = 0.4729, *p* = .1374), and contained high heterogeneity (77.17 %).

When only working memory capacity was investigated (i.e. when Bugos & Wang, 2022 was removed), a moderate effect which approached statistical significance (*d* = 0.6420, *p* = .0882) was detected, however heterogeneity remained high (74.17 %).

When the high bias study was removed, random effects model of the other four studies revealed a drop in the effect size to below the “low” threshold and was non-significant. (*d* = 0.1576, *p* = .4112), with moderate heterogeneity (31.24 %). This is the final model presented in Table 4 and Fig. 4 (C).

3.2.1.4. Verbal fluency (letter fluency, category fluency and category switching subtests). Three studies employed the category switching subtest of verbal fluency. Category switching is a subtest of the D-KEFS verbal fluency assessment which requires alternating between words of two categories as many times as possible within 60-second limit. Of the three studies which used this measure, one of which was rated as having “high” risk for overall bias (Bugos & Kochar, 2017), and the other two were rated as “some concerns”. A statistically significant small-to-moderate effect was found for category switching (*d* = 0.39, *p* = .0166, *I*² = 36 %, Fig. 4 (F)).

Analyses of other verbal fluency tests (letter fluency and category fluency) did not reveal effect sizes larger than 0.20, and none of which were statistically significant. However, effect sizes for letter and category fluency approached the 0.2 “low” effect size threshold (*d* = 0.19, *p* = .0795) and (*d* = 0.18, *p* = .1144) respectively (see Figures (D) and (E)).

3.2.2. Processing speed

A random-effects model for processing speed was conducted on 7 studies which included a measure of processing speed (see Table 3 for specific tests used). A moderate effect size was found, which was statistically significant (*d* = 0.60, *p* = .0004), with moderate heterogeneity (*I*² = 54 %).

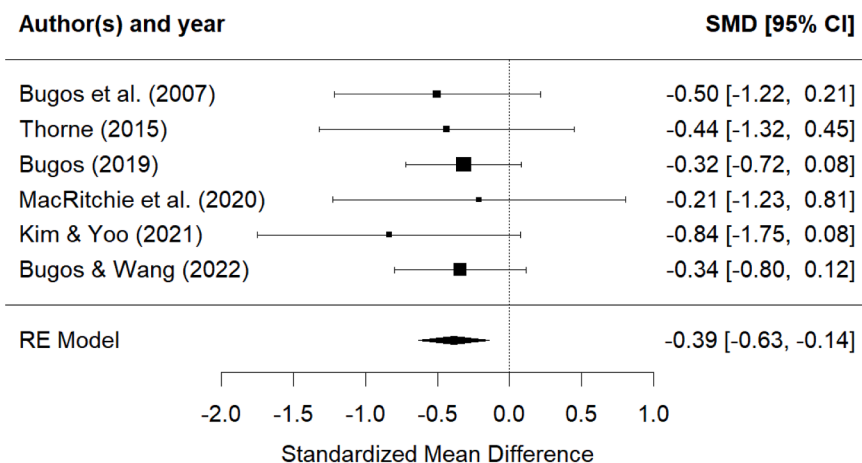
Notably, during the exploratory “leave-one-out” analysis, pooled effect size for processing speed dropped to low-moderate range when

Table 4
Random-effects models for executive functions, processing speed, visuospatial attention, and verbal memory.

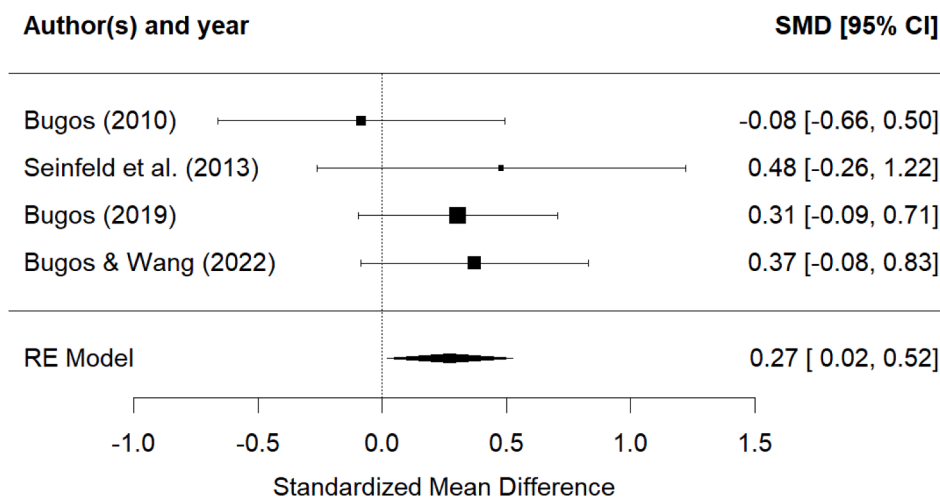
	Model				Heterogeneity				
	<i>d</i>	<i>P</i>	CI lower	CI upper	<i>Q</i>	<i>df</i>	<i>p</i>	<i>I</i> ²	<i>T</i> ²
Executive Functions									
Switching	-0.39**	0.0021	-0.6335	-0.1402	1.31	5	0.93	0	0
Inhibition	0.27*	0.0335	0.0212	0.5237	1.97	3	0.58	0	0
Working memory capacity/updating	0.16	0.4112	-0.2182	0.5333	4.33	3	0.23	31.24	0.05
Verbal fluency (letter fluency)	0.19	0.08	-0.0220	0.3970	4.51	5	0.48	0	0
Verbal fluency (category fluency)	0.18	0.11	-0.0429	0.3982	3.44	4	0.49	0	0
Verbal fluency (category switching)	0.39*	0.0166	0.0715	0.7158	3.11	2	0.21	36	0.03
Processing speed									
	0.47***	<0.0001	0.2513	0.6850	3.21	5	0.67	0	0
Visuospatial attention									
	-0.05	0.70	-0.3110	0.2101	15.63	9	0.08	29.16	0.05
Verbal Memory									
Total recall after 5 trials	0.1955	0.3310	-0.1987	0.5896	3.7893	2	0.1504	31.87	0.0394
Immediate/ short-delay recall	0.2327	0.1689	-0.0988	0.5641	0.3599	2	0.8353	0	0
Long-delay recall	0.2681	0.1536	-0.1001	0.6363	1.0517	1	0.3051	4.91	.0594

p* < .05, *p* < .01 ****p* < .001.

(A) Switching (TMT-B)**



(B) Inhibition (Stroop)*

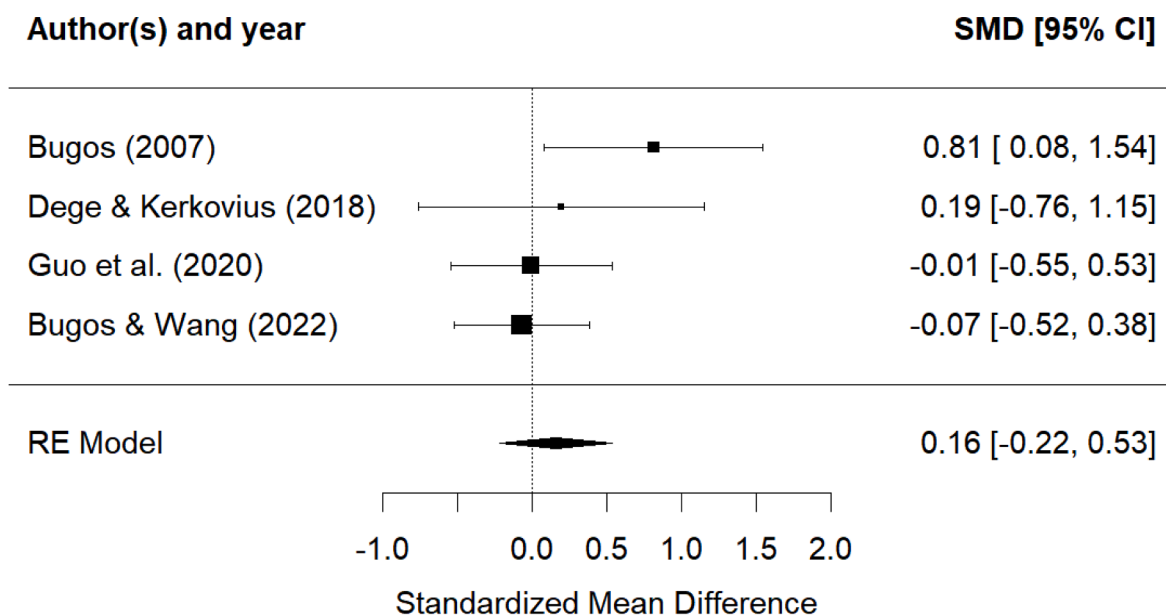


(C) Working Memory Capacity/Updating (digit span and N-back)

Fig. 4. Forest plots for cognitive domains tested, with statistically significant effect sizes indicated (* $p < .05$, ** $p < .01$ *** $p < .001$). (A) Switching, (B) Inhibition, (C) Working Memory Capacity/Updating (D) Verbal fluency (letter fluency) (E) Verbal fluency (category fluency) (F) Verbal fluency (category switching) (G) Processing Speed (H) Visuospatial Attention (I) Verbal memory (total recall) (J) Verbal fluency (immediate/short-delay recall) (K) Verbal memory (long-delay recall).

Seinfeld et al. (2013), a study which had been rated as high bias, was removed ($d = 0.47$, $p < .0001$, $I^2 = 0$). Therefore, Seinfeld et al. (2013) was omitted from the final forest plot for processing speed depicted in

Fig. 4 (G) to minimise risk of inflating effect sizes. It should also be noted that, of the six remaining studies which were included in the final model, two were rated as high for bias (Bugos, 2010; Bugos & Kochar, 2017),



(D) Verbal fluency (letter fluency)

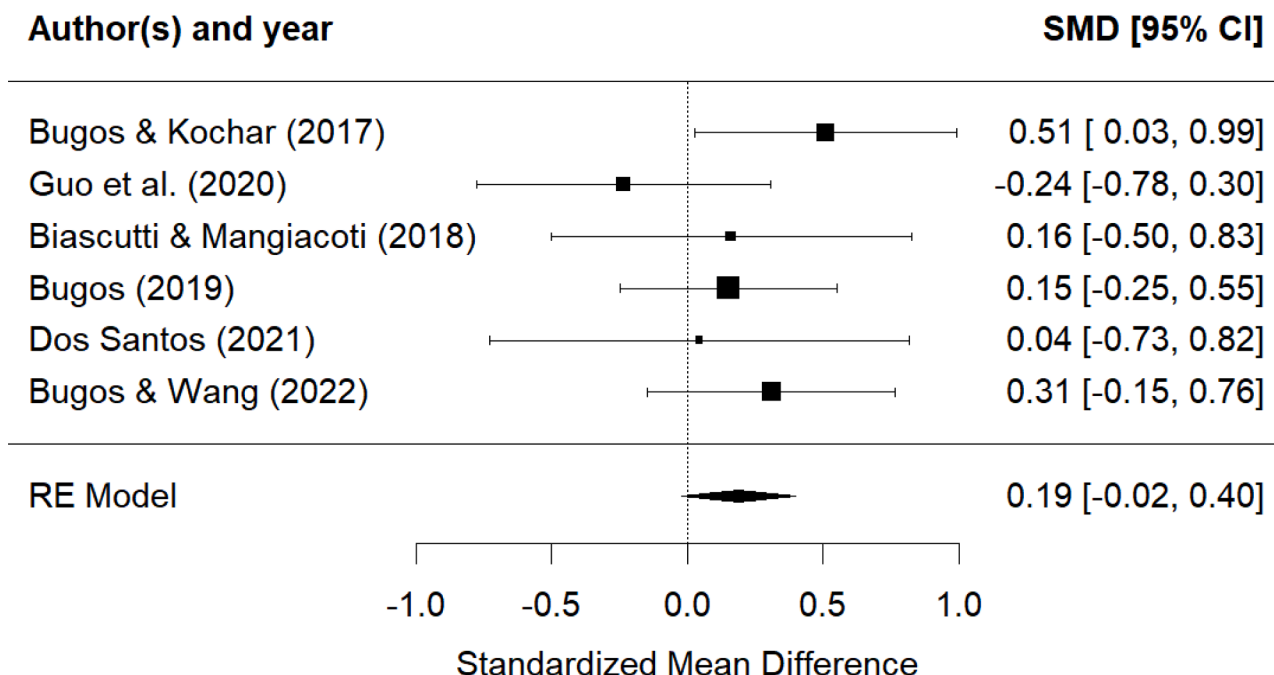


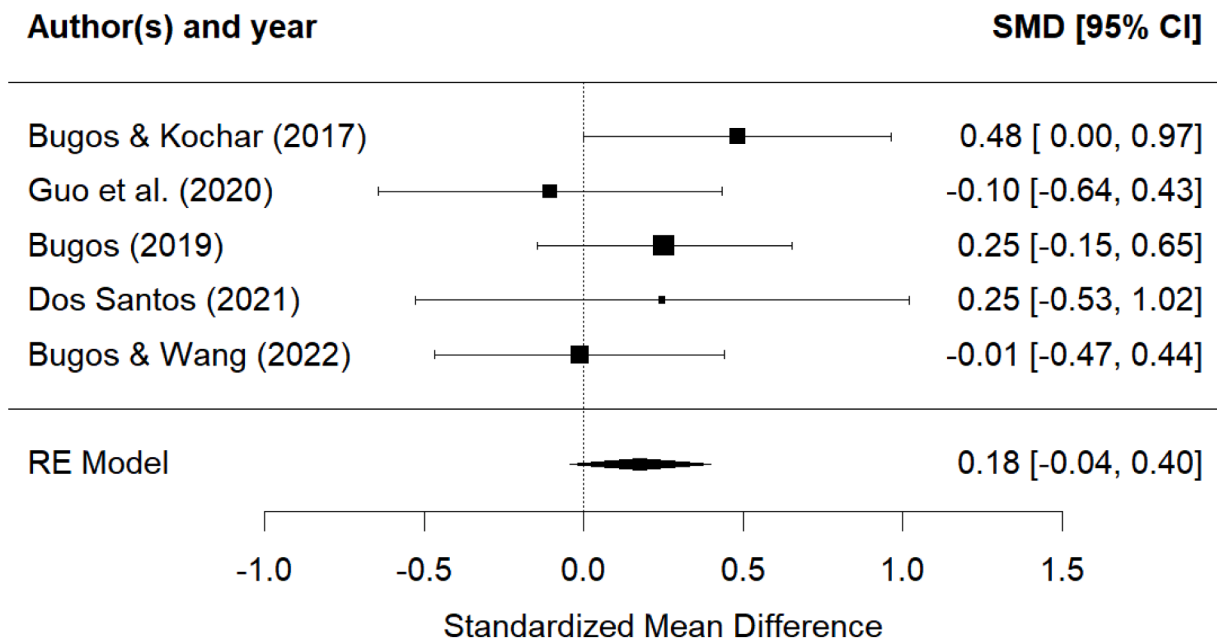
Fig. 4. (continued).

and four were rated as having some concerns. Removal of the two high bias studies did not impact effect size and so were left in the final model. However, this result should be interpreted with caution given that the Bugos group constitute five of the six studies, which may introduce bias given that the majority of the data was collected by the same lab.

3.2.3. Visuospatial attention

Ten studies employed the TMT-A as a measure of visuospatial attention. Two studies were rated as having high risk for overall bias (Bugos, 2010; Seinfeld et al., 2013), one was rated as having low overall bias (Dos Santos et al., 2020), and the remaining 7 studies were rated as some concerns. No effect size was found ($d = -0.0505$, $p = .7042$).

(E) Verbal fluency (category fluency)



(F) Verbal fluency (category switching) *

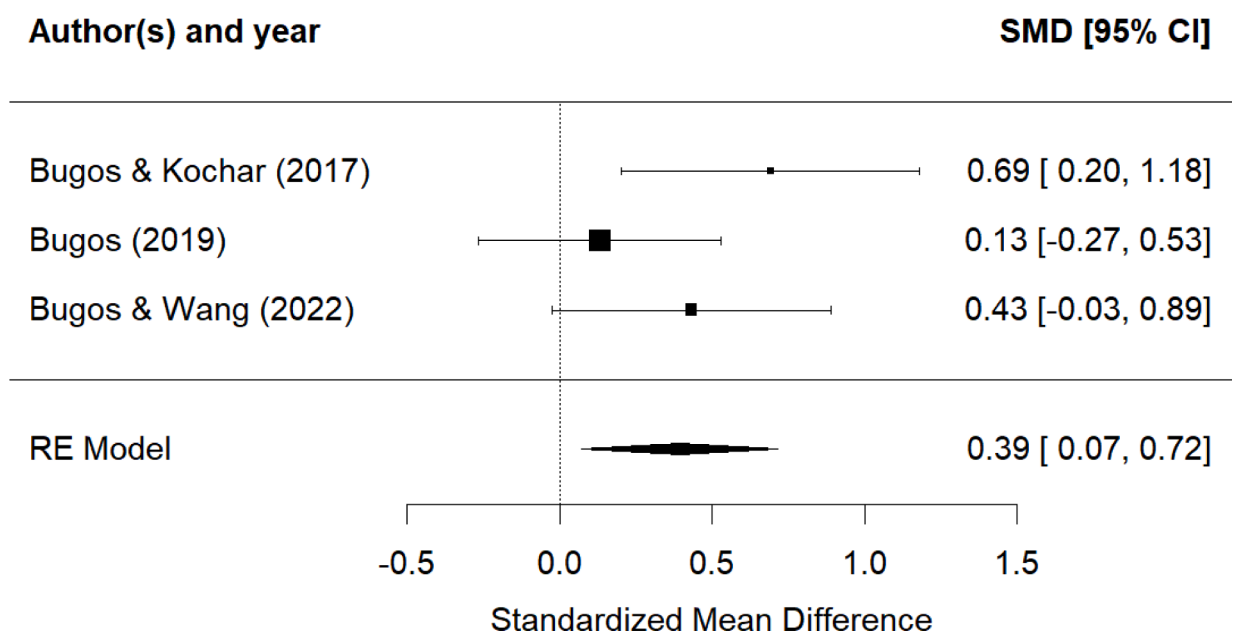
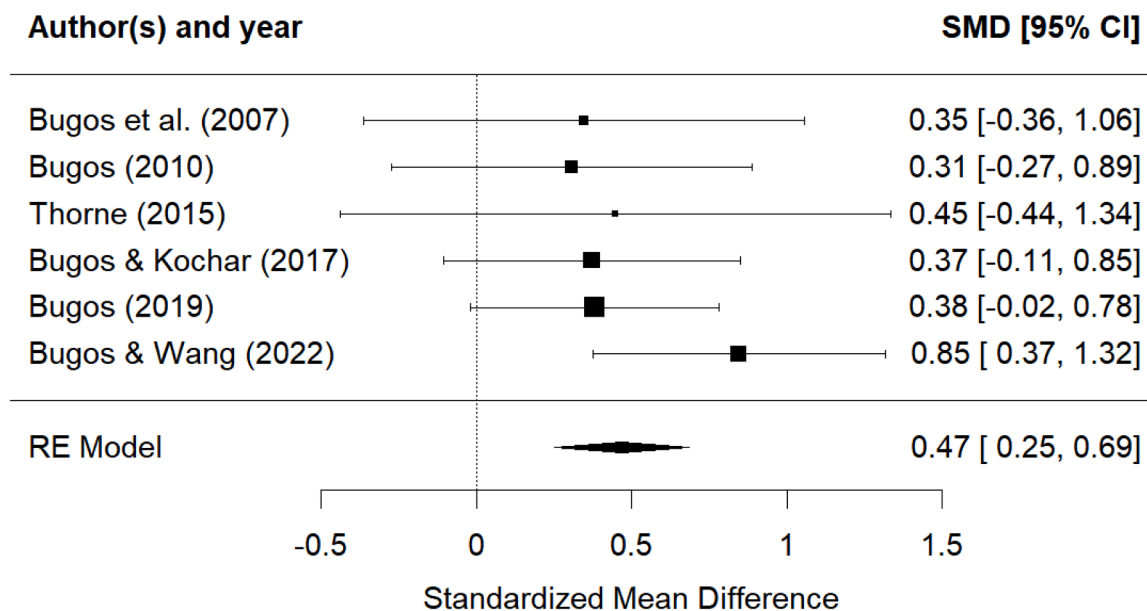


Fig. 4. (continued).

(G) Processing speed ***



(H) Visuospatial Attention

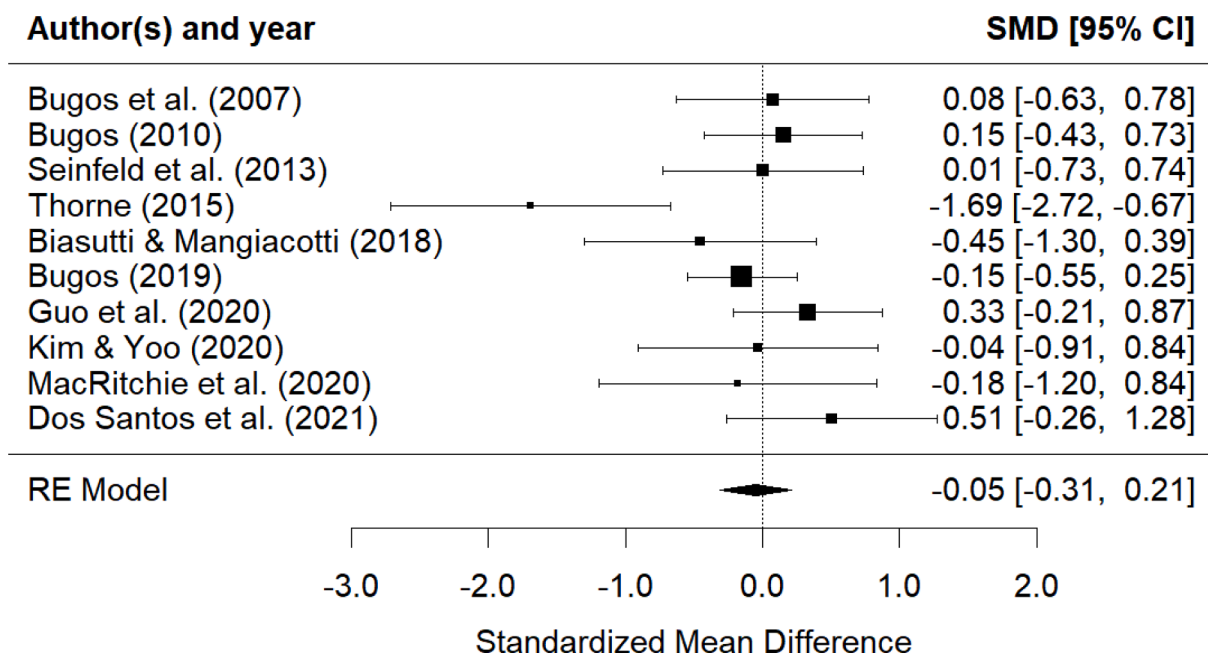


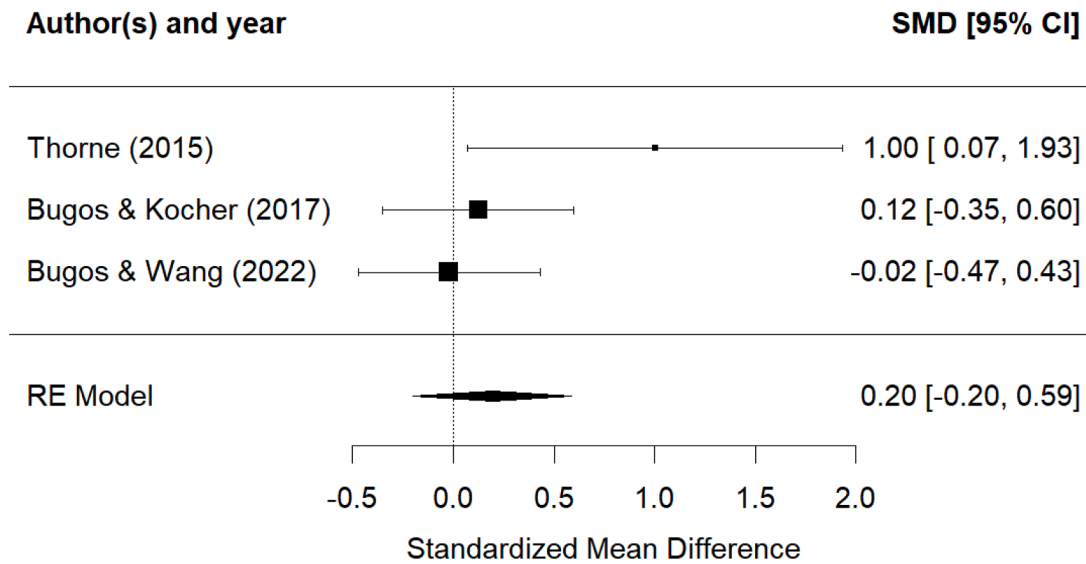
Fig. 4. (continued).

Heterogeneity was moderate ($I^2 = 29.16\%$). After visual inspection of the forest plot, the analysis was repeated whilst omitting [Thorne \(2015\)](#), but effect size and significance p values remained virtually unchanged ($d = 0.0370$, $p = .7342$, $I^2 = 0$). Therefore, [Thorne \(2015\)](#) was left in the final model reported in [Table 4](#) and [Fig. 4 \(H\)](#).

3.2.4. Verbal memory

3.2.4.1. Total word-list recall following five trials. Three studies reported total word recall following five successive trials where the same word list was presented ([Thorne, 2015](#); [Bugos & Kochar, 2017](#); [Bugos & Wang,](#)

(I) Verbal memory- Total word recall following 5 trials



(J) Verbal memory – Immediate/Short-delay Verbal Recall

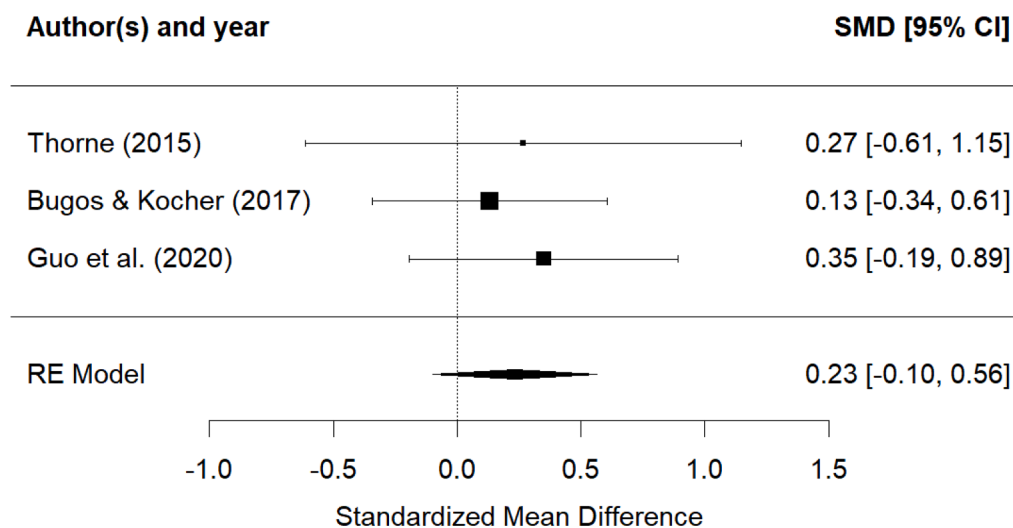


Fig. 4. (continued).

2022). The analysis indicated an effect size which approached the “low” threshold, but was non-significant (see Table 4; Fig. 4 (I)). However, further research is needed given that only three studies included this measure, one of which had been rated as high bias (Bugos & Kocher, 2017), and one which had not been peer-reviewed (Thorne, 2015).

3.2.4.2. Immediate and short-delay recall. Four studies measured immediate or short-delay verbal memory using different measures (see Table 4). The random effects model revealed a moderate effect size, which was non-significant ($d = 0.6064, p = .1265$), with high heterogeneity ($Q(3) = 9.7770; p = .0206; I^2 = 79.53\%$).

When Degé and Kerkovius (2018) was removed from the analysis,

(K) Long-delay Verbal Recall

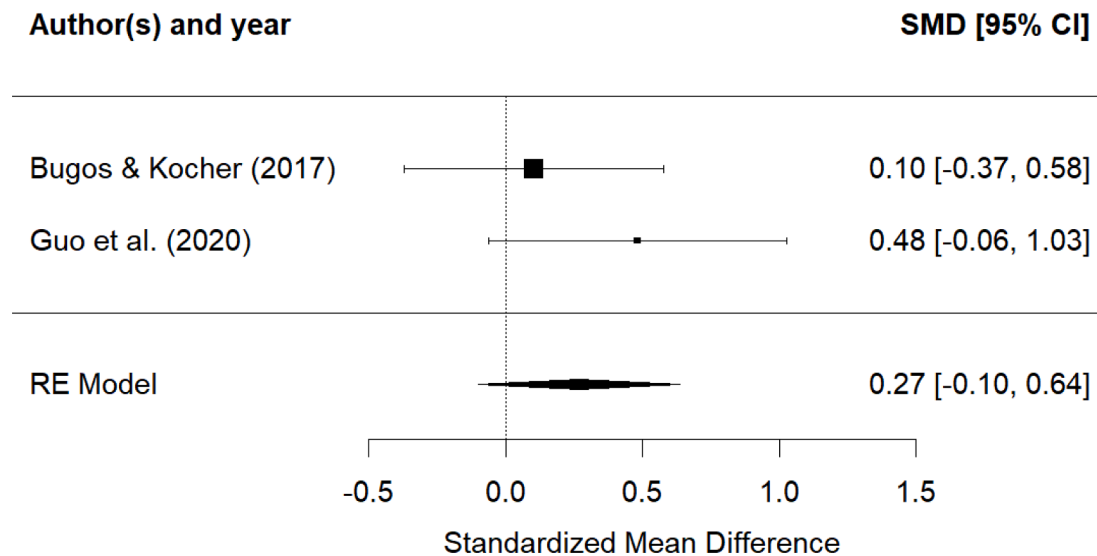


Fig. 4. (continued).

effect size was low and heterogeneity dropped to 0 %, but remained non-significant. This study was therefore omitted from the final model presented in Table 4 and Fig. 4 (J).

3.2.4.3. Long-delayed recall. Three studies employed measures of long-delay verbal recall (see Table 3). The model indicated a moderate effect size which approached statistical significance ($d = 0.4602$, $p = .0758$) with moderate heterogeneity ($Q(2) = 4.0866$; $p = .1296$; $I^2 = 50.42$ %).

When Thorne (2015) was removed from the analysis, effect size dropped to a low effect, with only 4.91 % heterogeneity, but remained non-significant (see Table 4; Fig. 4 (K)).

3.3. Three-month follow-up effect sizes

Of the thirteen studies included in the meta-analyses, only two conducted long-term follow-up testing. Effect sizes calculated from descriptive statistics reported in Bugos et al. (2007) indicated large effect sizes at 3-month follow-up testing in processing speed ($d = 1.36$) and switching ($d = -0.77$). Moderate effects were calculated for processing speed ($d = 0.47$), working memory ($d = 0.51$), inhibition ($d = 0.38$) and switching ($d = 0.34$) from 3-month follow-up data in Bugos and Wang (2022). No effect was found for verbal fluency at follow-up.

4. Discussion

The purpose of this systematic review and meta-analysis was to examine the effects of learning to play a musical instrument in older adulthood on cognition. This review is novel and timely given the shift in interest in recent years from computerised training programmes towards more ecologically-valid cognitive interventions which tax multiple sensory and motor modalities. Data from thirteen studies were included in this meta-analysis, which represents nine more studies than the most recent meta-analyses papers which were published when only four musical instrument intervention studies on older adults were available (Kim & Yoo, 2019; Roman-Caballero et al., 2018).

Training in a pitched or rhythm instrument was found to have a positive effect on EF – specifically: a low-moderate effect on switching; and a low effect on inhibition. No effect was found on working memory

capacity/updating. With regards to verbal fluency, a low-moderate effect size was found for the category switching subtest, but no statistically significant effects were found for letter fluency or category fluency subtests. With regards to other fluid domains tested, a moderate effect was found for processing speed, but no effects were found for visuo-spatial attention or verbal memory.

4.1. Effects of musical instrument training on EF and fluid intelligence

The benefits of learning to play an instrument to EF found in this study are in line with previous meta-analyses (Kim & Yoo, 2019; Roman-Caballero et al., 2018). However, the findings are in contrast to a meta-analysis which examined effects of rhythmic exercise interventions (e.g., dancing and exercise to music) on EF (Ma et al., 2023). This suggests that some features of playing an instrument such fine motor control or concurrent auditory feedback could be important for EF beyond the effects of movement to music, although further research is needed given that only three out of the forty-four rhythm studies included in Ma et al. (2023) investigated EF.

The findings are also in agreement with cross-sectional research suggesting an inhibitory control advantage for musicians versus non-musicians (Moreno et al., 2014; Moreno & Farzan, 2015; Moussard et al., 2016; Hanna-Pladdy & MacKay, 2011), as well as with evidence from a neuropsychological study showing that event related potentials (ERPs) were associated with inhibitory control during a GoNoGo task over right frontal regions in older adults following three months of percussion training (Alain et al., 2019).

Inhibition requires the ability to regulate incoming sensory input and behaviour so as to override automatic responses or external distractions to ensure more appropriate actions or behaviours (Diamond, 2013). Similarly, switching involves the disengagement of an irrelevant task and subsequent engagement of a relevant task (Miyake et al., 2000). Taken together, music training is suggested to improve supervisory mechanisms which act to ensure desired responses and reinforce interference monitoring.

It is unclear as to why music training may impact cognitive mechanisms responsible for controlling automatic responses. Continuous and dynamic suppression of motor responses for incorrect notes in favour of

playing the correct ones, for the correct length of time (e.g. without releasing a piano key too soon), may tax inhibitory processes while playing music. Interestingly, the best-fitting model for switching data (TMT-B completion times) was when only bimanual instruments were included. It may be that inter-hemispheric sensory-motor integration and synchronization which occurs from continuously switching attention between right- and left-hand auditory output may train this particular domain of EF, although further research is needed given that only one study used a unimanual instrument. This could perhaps also explain the far-transfer effect found on verbal category switching, but again, further research is needed with larger trials given that only three studies examined this domain.

The moderate effect on processing speed was the largest detected effect size in this *meta-analysis*, and this finding is in line with Kim and Yoo (2019), and musician-versus-nonmusician cross-sectional research (Faßhauer et al., 2015). The finding is also in line with functional magnetic resonance imaging (fMRI) data from Guo et al. (2021) which found reduced left putamen and right superior temporal gyrus functional activity post-music training which was associated with greater improvement in memory performance post-training, suggesting increased neural efficiency. Processing speed is associated with general cognitive performance (Sliwinski & Buschke, 1999). It is possible that the improvement in processing speed may have contributed to the statistically significant effect sizes in other cognitive domains (switching and inhibition).

In contrast to Kim and Yoo (2019), no effect was found for visuo-spatial attention (TMT-A completion times) when more recent large-scale studies were included. However, this lack of finding may be due to the populations sampled, as Kim and Yoo (2019) also included older adults with MCI, whereas this study focused only on healthy older adults without cognitive impairment. No effect was found on working memory capacity/updating, or in verbal memory in contrast to the cognitive benefits reported in cross-sectional studies comparing musicians and novices (Jäncke, 2009). This suggests that these abilities may take longer to train, or may be more dependent on sensitive development periods in childhood. It is also possible that further data are needed, given that only a small number of studies investigated working memory and verbal performance.

4.2. Limitations

A limitation of this *meta-analysis* is the relatively small sample size of studies ($N = 13$), particularly given that not all studies examined the same cognitive abilities, which limits the extent to which publication bias can be investigated. Furthermore, one research group is over-represented across studies. Five out of the thirteen studies (38.4 %) were conducted by Bugos and colleagues which potentially increases the risk of bias in the analyses, particularly for processing speed and inhibition.

A number of methodological limitations were identified in the literature. Three studies ranked as “high”, and nine ranked as “some concerns” for overall bias. Only three studies utilised both an active and a passive control group. Three studies compared music intervention to a no-treatment passive control only. Absence of an active control group presents difficulties in ruling out possible placebo effects and in determining the mechanisms of action in the intervention. Due to the nature of the intervention, managing participant expectations through blinding is impossible, but only five studies reported that assessors were blind to group allocation. Taken together, this raises concerns about the possibility of inflated effect sizes through participant and assessor expectations. Furthermore, study sample sizes were relatively small, with only two studies including samples with over one hundred participants.

Music training studies may be subject to participant selection bias. For example, older adults with upper-limb weakness, or back pain may not have the physical capacity to sit and practice an instrument, such as the piano, for extended periods of time. Educational background and

socio-economic status may also impact an individual’s interest, adherence and retention to training.

Attrition rates were relatively high amongst studies. Notably, when Bugos and Wang (2022) examined low-dosage participants, they found significantly lower baseline full-scale IQ compared to the group which completed training, suggesting that pre-existing ability may affect adherence. Consistent with global “g” intelligence theories (Deary et al., 2010) individuals with higher IQ are more likely to have good aptitude for music, when controlling for training duration and socio-economic status (Swaminathan et al., 2017). Whereas high-functioning individuals may be more likely to complete training, it is most effective in those with lower baseline cognitive ability (Bugos & Wang, 2022), indicating a potential mismatch between acceptability and need in previous studies.

Additionally, not all studies explicitly stated how participants accessed an instrument for practice. In some studies, instruments were provided (Guo et al., 2021) or were accessed in community buildings (Bugos et al.), but other studies did not indicate how participants could fulfill practice requirements. Inclusion of participants who already had access to instruments (e.g., piano) increases the risk of confounding factors regarding actual level of experience, pre-exposure to music or socio-economic status. This also highlights the potential costliness of running large-scale “ecologically valid” music RCTs, where instruments and instructors need to be funded – an issue which does not apply to computerized programmes.

4.3. Future directions

This *meta-analysis* suggests that musical instrument training in later adulthood can benefit EF and processing speed. However further research is needed to address the specific processes involved in musical training which enhance cognition.

Firstly, the specific intervention parameters which lead to improved cognition could be explored. In the present *meta-analysis* there was not a sufficient number of studies to conduct meaningful moderation analyses to investigate the variables that may have impacted on the size of training effects such as intervention frequency, duration, nature of the control group, effects of pitched versus percussion instrument training. Kim and Yoo (2019) previously reported that percussion or “immediate” involvement interventions tend to be more common in MCI and clinical populations, whereas “sustained” involvement instruments, which require the reading and playing of music, are more common in healthy populations. The extent to which different elements such as finger dexterity training, sight-reading or ear-training play a role in far-transfer therefore in healthy older adults still requires further investigation. Furthermore, near-transfer measures are lacking in the studies included in this *meta-analysis*, and relationships between improvements in instrument-playing and cognitive improvements could be examined in future studies.

Secondly, more longitudinal studies are needed to determine longevity of effects. Long-term effects of training in middle-aged participants could also be examined, given that some EF begin to decline from 30 to 40 years of age (Ferguson et al., 2021), and playing an instrument has recently been shown to protect against age-related brain atrophy in both grey (Marie et al., 2023) and white (Jünemann et al., 2022) matter. Training interventions which begin in middle adulthood may also help address acceptability and attrition issues highlighted above.

Thirdly, although there have been some studies showing training-induced neural plasticity (e.g., Worschech et al., 2022), the neural underpinnings of training-induced EF enhancements are still not well understood. For example, one study found that both music listening training and piano training lead to increased volume in the caudate nucleus, Rolandic operculum and inferior cerebellum (Marie et al., 2023), indicating that ear training alone must also be taken into account when examining the impact of music training on cognition and

neuroplasticity. Further research is needed to examine how music-induced neural changes are related to cognition.

5. Conclusion

In conclusion, there is promising evidence that engagement in a musical instrument training positively impacts EF and processing speed in healthy older adults. In addition, motivation can be maintained over time with learning an instrument, and may be more likely to lead to long-term benefits. Whereas computerized cognitive training may be discontinued, there are a limitless number of musical pieces or songs which can be learned after an intervention has ended (Sutcliffe et al., 2020). Given the capacity for plasticity into later adulthood, the potential for motor activities to engage networks important for cognition, and the benefits of music to well-being, music training may be an ecological and enjoyable activity which benefits cognitive function in older adulthood.

CRedit authorship contribution statement

Fionnuala Rogers: Data curation, Formal analysis, Investigation, Methodology, Visualization, Writing – original draft. **Claudia Metzler-Baddeley:** Supervision, Writing – review & editing.

Declaration of competing interest

The authors declare that they have no known competing financial interests or personal relationships that could have appeared to influence the work reported in this paper.

Data availability

Data will be made available on request.

Acknowledgements

This research was supported by an Open PhD studentship from the School of Psychology Cardiff University and a National Institute for Health Research (NIHR) and Health and Care Research Wales (HCRW) Advanced Fellowship [NIHR-FS(A)-2022]. We would like to thank Dr. Jennifer MacRitchie and colleagues for providing data from their study to include in this meta-analysis.

Appendix A. Supplementary data

Supplementary data to this article can be found online at <https://doi.org/10.1016/j.bandc.2024.106137>.

References

- Alain, C., Moussard, A., Singer, J., Lee, Y., Bidelman, G. M., & Moreno, S. (2019). Music and visual art training modulate brain activity in older adults. *Frontiers in Neuroscience*, 13, 1–15. <https://doi.org/10.3389/fnins.2019.00182>
- Baillieux, H., De Smet, H. J., Paquier, P. F., De Deyn, P. P., & Mariën, P. (2008). Cerebellar neurocognition: Insights into the bottom of the brain. *Clinical Neurology and Neurosurgery*, 110(8), 763–773. <https://doi.org/10.1016/j.clineuro.2008.05.013>
- Bernard, J. A., & Seidler, R. D. (2014). Moving forward: Age effects on the cerebellum underlie cognitive and motor declines. In *Neuroscience and Biobehavioral Reviews* (Vol. 42, pp. 193–207). Elsevier Ltd.. <https://doi.org/10.1016/j.neubiorev.2014.02.011>
- Bezdicsek, O., Stepankova, H., Martinek Novakova, L., & Kopecek, M. (2016). Toward the processing speed theory of activities of daily living in healthy aging: Normative data of the functional activities questionnaire. *Aging Clinical and Experimental Research*, 28, 239–247.
- *Biasutti, M., & Mangiacotti, A. (2018). Assessing a cognitive music training for older participants: A randomised controlled trial. *International Journal of Geriatric Psychiatry*, 33(2), 271–278.
- Brandt, J., Spencer, M., & Folstein, M. (1988). The telephone interview for cognitive status. *Neuropsychiatry Neuropsychology, and Behavioral Neurology*, 1(2), 111–117.
- Braver, T. S., & West, R. (2011). Working memory, executive control, and aging. In *The handbook of aging and cognition* (pp. 319–380). Psychology Press.
- *Bugos, J. A. (2010). The benefits of music instruction on processing speed, verbal fluency, and cognitive control in aging. *Music Education Research International*, 4.
- *Bugos, J. A. (2019). The effects of bimanual coordination in music interventions on executive functions in aging adults. *Frontiers in Integrative Neuroscience*, 13. <https://doi.org/10.3389/fnint.2019.00068>
- *Bugos, J. A., Perlstein, W. M., McCrae, C. S., Brophy, T. S., & Bedenbaugh, P. H. (2007). Individualized piano instruction enhances executive functioning and working memory in older adults. *Aging and Mental Health*, 11(4), 464–471. <https://doi.org/10.1080/13607860601086504>
- *Bugos, J. A., & Wang, Y. (2022). Piano training enhances executive functions and psychosocial outcomes in aging: Results of a randomized controlled trial. *The Journals of Gerontology. Series B, Psychological Sciences and Social Sciences*, 77(9), 1625–1636. <https://doi.org/10.1093/geronb/gbac021>
- Bugos, J. A., Bidelman, G. M., Moreno, S., Shen, D., Lu, J., & Alain, C. (2022). Music and visual art training increase auditory-evoked theta oscillations in older adults. *Brain Sciences*, 12(10), 1300.
- *Bugos, J., & Kochar, S. (2017). Efficacy of a short-term intense piano training program for cognitive aging: A pilot study. *Musicae Scientiae*, 21(2), 137–150. <https://doi.org/10.1177/1029864917690020>
- Burrai, F., Apuzzo, L., & Zanotti, R. (2021). Effectiveness of rhythmic auditory stimulation on gait in Parkinson disease: A systematic review and meta-analysis. *Holistic Nursing Practice*. Lippincott Williams and Wilkins. <https://doi.org/10.1097/HNP.0000000000000462>.
- Casella, C., Bourbon-Teles, J., Bells, S., Coulthard, E., Parker, G. D., Rosser, A., Jones, D. K., & Metzler-Baddeley, C. (2020). Drumming motor sequence training induces apparent myelin remodelling in Huntington's disease: A longitudinal diffusion mri and quantitative magnetization transfer study. *Journal of Huntington's Disease*, 9(3), 303–320. <https://doi.org/10.3233/JHD-200424>
- Cepeda, N. J., Kramer, A. F., & Gonzalez de Sather, J. (2001). Changes in executive control across the life span: Examination of task-switching performance. *Developmental psychology*, 37(5), 715.
- Cerqueira, J. J., Mailliet, F., Almeida, O. F. X., Jay, T. M., & Sousa, N. (2007). The prefrontal cortex as a key target of the maladaptive response to stress. *Journal of Neuroscience*, 27(11), 2781–2787. <https://doi.org/10.1523/JNEUROSCI.4372-06.2007>
- Chanda, M. L., & Levitin, D. J. (2013). The neurochemistry of music. *Trends in Cognitive Sciences*, 17(4), 179–193.
- Cohen, J. (2013). *Statistical power analysis for the behavioral sciences*. Academic press.
- Corbett, A., Owen, A., Hampshire, A., Grah, J., Stenton, R., Dajani, S., Burns, A., Howard, R., Williams, N., Williams, G., & Ballard, C. (2015). The effect of an online cognitive training package in healthy older adults: An online randomized controlled trial. *Journal of the American Medical Directors Association*, 16(11), 990–997. <https://doi.org/10.1016/j.jamda.2015.06.014>
- Dahlin, E., Neely, A. S., Larsson, A., Bäckman, L., & Nyberg, L. (2008). Transfer of learning after updating training mediated by the striatum. *Science*, 320(5882), 1510–1512.
- Deary, I. J., Penke, L., & Johnson, W. (2010). The neuroscience of human intelligence differences. *Nature reviews neuroscience*, 11(3), 201–211.
- *Degé, F., & Kerkovius, K. (2018). The effects of drumming on working memory in older adults. *Annals of the New York Academy of Sciences*, 1423(1), 242–250. <https://doi.org/10.1111/nyas.13685>
- Delis, D. C., Kaplan, E., & Kramer, J. H. (2001a). Delis-Kaplan Executive Function System (D-KEFS). San Antonio, TX: The Psychological Corporation. Swanson / The D-KEFS: A Review 127.
- Diamond, A. (2013). Executive functions. In *Annual Review of Psychology* (Vol. 64, pp. 135–168). Annual Reviews Inc. <https://doi.org/10.1146/annurev-psych-113011-143750>.
- Diamond, A., & Ling, D. S. (2016). Conclusions about interventions, programs, and approaches for improving executive functions that appear justified and those that, despite much hype, do not. *Developmental Cognitive Neuroscience*, 18, 34–48. <https://doi.org/10.1016/j.dcn.2015.11.005>
- Douaud, G., Groves, A. R., Tamnes, C. K., Westlye, L. T., Duff, E. P., Engvig, A., Walhovd, K. B., James, A., Gass, A., Monsch, A. U., Matthews, P. M., Fjell, A. M., Smith, S. M., & Johansen-Berg, H. (2014). A common brain network links development, aging, and vulnerability to disease. *Proceedings of the National Academy of Sciences of the United States of America*, 111(49), 17648–17653. <https://doi.org/10.1073/pnas.1410378111>
- Elliott, B. (1982). *Guide to the selection of musical instruments with respect to physical ability and disability*. Saint Louis, MO: MMB Music, Inc.
- Faßhauer, C., Frese, A., & Evers, S. (2015). Musical ability is associated with enhanced auditory and visual cognitive processing. *BMC neuroscience*, 16(1), 1–9.
- Ferguson, H. J., Brunson, V. E. A., & Bradford, E. E. F. (2021). The developmental trajectories of executive function from adolescence to old age. *Scientific Reports*, 11(1). <https://doi.org/10.1038/s41598-020-80866-1>
- Ferreri, L., Mas-Herrero, E., Zatorre, R. J., Ripollés, P., Gomez-Andres, A., Alicart, H., ... Rodriguez-Fornells, A. (2019). Dopamine modulates the reward experiences elicited by music. *Proceedings of the National Academy of Sciences*, 116(9), 3793–3798.
- Fillenbaum, G. G. (1985). Screening the elderly: A brief instrumental activities of daily living measure. *Journal of the American Geriatrics Society*, 33(10), 698–706.
- Folstein, M. F., Folstein, S. E., & McHugh, P. R. (1975). "Mini-mental state": a practical method for grading the cognitive state of patients for the clinician. *Journal of Psychiatric Research*, 12(3), 189–198.
- Franklin, M. S., Sledge Moore, K., Yip, C. Y., Jonides, J., Rattray, K., & Moher, J. (2008). The effects of musical training on verbal memory. *Psychology of Music*, 36(3), 353–365.

- Gates, N. J., Rutjes, A. W. S., Di Nisio, M., Karim, S., Chong, L. Y., March, E., Martínez, G., & Vernooij, R. W. M. (2020). Computerised cognitive training for 12 or more weeks for maintaining cognitive function in cognitively healthy people in late life. *Cochrane Database of Systematic Reviews*. John Wiley and Sons Ltd.. <https://doi.org/10.1002/14651858.CD012277.pub3>
- Gronwall, D. M. A. (1977). Paced auditory serial-addition task: A measure of recovery from concussion. *Perceptual and motor skills*, 44(2), 367–373.
- *Guo, X., Yamashita, M., Suzuki, M., Ohnawa, C., Asano, K., Abe, N., Soshi, T., & Sekiyama, K. (2021). Musical instrument training program improves verbal memory and neural efficiency in novice older adults. *Human Brain Mapping*, 42(5), 1359–1375. <https://doi.org/10.1002/hbm.25298>
- Haire, C. M., Vuong, V., Tremblay, L., Patterson, K. K., Chen, J. L., & Thaut, M. H. (2021). Effects of therapeutic instrumental music performance and motor imagery on chronic post-stroke cognition and affect: A randomized controlled trial. *NeuroRehabilitation*, 48(2), 195–208. <https://doi.org/10.3233/NRE-208014>
- Hanna-Pladdy, B., & MacKay, A. (2011). The relation between instrumental musical activity and cognitive aging. *Neuropsychology*, 25(3), 378–386. <https://doi.org/10.1037/a0021895>
- Hazy, T. E., Frank, M. J., & O'Reilly, R. C. (2006). Banishing the homunculus: Making working memory work. *Neuroscience*, 139(1), 105–118. <https://doi.org/10.1016/j.neuroscience.2005.04.067>
- Herholz, S. C., & Zatorre, R. J. (2012). Musical training as a framework for brain plasticity: Behavior, function, and structure. *Neuron*, 76(3), 486–502. <https://doi.org/10.1016/j.neuron.2012.10.011>
- Higgins, J. P. T., Altman, D. G., Gotzsche, P. C., Jüni, P., Moher, D., Oxman, A. D., Savović, J., Schulz, K. F., Weeks, L., & Sterne, J. A. C. (2011). The Cochrane collaboration's tool for assessing risk of bias in randomised trials. *BMJ (Online)*, 343(7829). <https://doi.org/10.1136/bmj.d5928>
- Higgins, J. P. T., & Thompson, S. G. (2002). Quantifying heterogeneity in a meta-analysis. *Statistics in Medicine*, 21(11), 1539–1558. <https://doi.org/10.1002/sim.1186>
- Holmes, J., Woolgar, F., Hampshire, A., & Gathercole, S. E. (2019). Are working memory training effects paradigm-specific? *Frontiers in Psychology*, 10(MAY). <https://doi.org/10.3389/fpsyg.2019.01103>
- Hsieh, S., Schubert, S., Hoon, C., Mioshi, E., & Hodges, J. R. (2013). Validation of the addenbrooke's cognitive examination III in frontotemporal dementia and alzheimer's disease. *Dementia and geriatric cognitive disorders*, 36(3–4), 242–250.
- Jaeggi, S. M., Buschkuhl, M., Jonides, J., & Perrig, W. J. (2008). Improving fluid intelligence with training on working memory. <https://www.pnas.org>.
- Jäncke, L. (2009). The plastic human brain. *Restorative Neurology and Neuroscience*, 27(5), 521–538. <https://doi.org/10.3233/RNN-2009-0519>
- Jünemann, K., Marie, D., Worschech, F., Scholz, D. S., Grouiller, F., Kiegel, M., Van De Ville, D., James, C. E., Krüger, T. H. C., Altenmüller, E., & Sinke, C. (2022). Six months of piano training in healthy elderly stabilizes white matter microstructure in the fornix, compared to an active control group. *Frontiers in Aging Neuroscience*, 14. <https://doi.org/10.3389/fnagi.2022.817889>
- Kelly, M. E., Loughrey, D., Lawlor, B. A., Robertson, I. H., Walsh, C., & Brennan, S. (2014). The impact of cognitive training and mental stimulation on cognitive and everyday functioning of healthy older adults: A systematic review and meta-analysis. In *Ageing Research Reviews* (Vol. 15, Issue 1, pp. 28–43). Elsevier Ireland Ltd. <https://doi.org/10.1016/j.arr.2014.02.004>
- Kim, S. J., & Yoo, G. E. (2019). Instrument playing as a cognitive intervention task for older adults: A systematic review and meta-analysis. In *Frontiers in Psychology* (Vol. 10, Issue FEB). Frontiers Media S.A. <https://doi.org/10.3389/fpsyg.2019.00151>
- *Kim, S. J., & Yoo, G. E. (2020). Rhythm-motor dual task intervention for fall prevention in healthy older adults. *Frontiers in psychology*, 10, 3027.
- Klingberg, T., Fernell, E., Olesen, P. J., Johnson, M., Gustafsson, P., Dahlström, K., ... Westerberg, H. (2005). Computerized training of working memory in children with ADHD—a randomized, controlled trial. *Journal of the American Academy of child & adolescent psychiatry*, 44(2), 177–186.
- Koshimori, Y., & Thaut, M. H. (2019). New perspectives on music in rehabilitation of executive and attention functions. *Frontiers in Neuroscience*, 13. <https://doi.org/10.3389/fnins.2019.01245>
- Lezak, M., Howieson, D., Bigler, E., & Tranel, D. (2012). *Neuropsychological assessment* (5th ed). Oxford University Press.
- Koshimori, Y., & Thaut, M. H. (2023). Rhythmic auditory stimulation as a potential neuromodulator for Parkinson's disease. *Parkinsonism and Related Disorders*.
- Koziol, L. F., Budding, D. E., & Chidekel, D. (2012). From movement to thought: Executive function, embodied cognition, and the cerebellum. *Cerebellum*, 11(2), 505–525. <https://doi.org/10.1007/s12311-011-0321-y>
- Lee, H., & Ko, B. (2023). Effects of music-based interventions on motor and non-motor symptoms in patients with parkinson's disease: A systematic review and meta-analysis. *International Journal of Environmental Research and Public Health*, 20(2), 1046.
- Lister, J. J., Hudak, E. M., Andel, R., & Edwards, J. D. (2023). The effects of piano training on auditory processing, cognition, and everyday function. *Journal of Cognitive Enhancement*. <https://doi.org/10.1007/s41465-023-00256-z>
- Liston, C., McEwen, B. S., & Casey, B. J. (2009). Psychosocial stress reversibly disrupts prefrontal processing and attentional control. *Proceedings of the National Academy of Sciences*, 106(3), 912–917.
- Ma, C., Li, M., Li, R., & Wu, C. (2023). The effect of rhythmic movement on physical and cognitive functions among cognitively healthy older adults: A systematic review and meta-analysis. *Archives of Gerontology and Geriatrics*, 104837.
- *MacRitchie, J., Bredan, M., Milne, A. J., & McIntyre, S. (2020). Cognitive, motor and social factors of music instrument training programs for older adults' improved wellbeing. *Frontiers in Psychology*, 10. <https://doi.org/10.3389/fpsyg.2019.02868>
- Marie, D., Müller, C. A., Altenmüller, E., Van De Ville, D., Jünemann, K., Scholz, D. S., ... James, C. E. (2023). Music interventions in 132 healthy older adults enhance cerebellar grey matter and auditory working memory, despite general brain atrophy. *Neuroimage: Reports*, 3(2), Article 100166.
- Melby-Lervåg, M., Redick, T. S., & Hulme, C. (2016). Working memory training does not improve performance on measures of intelligence or other measures of “far transfer”: Evidence from a meta-analytic review. *Perspectives on Psychological Science*, 11(4), 512–534. <https://doi.org/10.1177/17456916166635612>
- Metzler-Baddeley, C., Cantera, J., Coulthard, E., Rosser, A., Jones, D. K., & Baddeley, R. J. (2014). Improved executive function and callosal white matter microstructure after rhythm exercise in Huntington's disease. *Journal of Huntington's Disease*, 3(3), 273–283. <https://doi.org/10.3233/JHD-140113>
- Miyake, A., Friedman, N. P., Emerson, M. J., Witzki, A. H., Howerter, A., & Wager, T. D. (2000). The Unity and Diversity of executive functions and their contributions to complex “frontal lobe” tasks: A latent variable analysis. *Cognitive Psychology*, 41(1), 49–100. <https://doi.org/10.1006/cogp.1999.0734>
- Moreau, D., & Conway, A. R. A. (2014). The case for an ecological approach to cognitive training. In *Trends in Cognitive Sciences* (Vol. 18(7, pp. 334–336). Elsevier Ltd. <https://doi.org/10.1016/j.tics.2014.03.009>
- Moreno, S., & Farzan, F. (2015). Music training and inhibitory control: A multidimensional model. *Annals of the New York Academy of Sciences*, 1337(1), 147–152. <https://doi.org/10.1111/nyas.12674>
- Moreno, S., Wodniecka, Z., Tays, W., Alain, C., & Bialystok, E. (2014). Inhibitory control in bilinguals and musicians: Event related potential (ERP) evidence for experience-specific effects. *PLoS ONE*, 9(4). <https://doi.org/10.1371/journal.pone.0094169>
- Moussard, A., Bermudez, P., Alain, C., Tays, W., & Moreno, S. (2016). Life-long music practice and executive control in older adults: An event-related potential study. *Brain Research*, 1642, 146–153. <https://doi.org/10.1016/j.brainres.2016.03.028>
- Page, M. J., McKenzie, J. E., Bossuyt, P. M., Boutron, I., Hoffmann, T. C., Mulrow, C. D., & Moher, D. (2021). The PRISMA 2020 statement: An updated guideline for reporting systematic reviews. *International Journal of Surgery*, 88.
- Pantelyat, A., Syres, C., Reichwein, S., & Willis, A. (2016). DRUM-PD: The use of a drum circle to improve the symptoms and signs of parkinson's disease (PD). *Movement Disorders Clinical Practice*, 3(3), 243–249.
- Raz, N. (2005). Ageing and the Brain. In *eLS*. Wiley. [10.1038/npg.els.0004063](https://doi.org/10.1038/npg.els.0004063).
- Reitan, R. M., & Wolfson, D. (2009). The Halstead-reitan neuropsychological test battery for adults—theoretical, methodological, and validation bases. *Neuropsychological assessment of neuropsychiatric and neuromedical disorders*, 1, 3–24.
- Resnick, S. M., Pham, D. L., Kraut, M. A., Zonderman, A. B., & Davatzikos, C. (2003). Longitudinal Magnetic Resonance Imaging Studies of Older Adults: A Shrinking Brain.
- Revie, L., & Metzler-Baddeley, C. (2023). Age-related fornix decline predicts conservative response strategy-based slowing in perceptual decision-making. *bioRxiv*, 2023-11.
- Roca, M., Manes, F., Cetkovich, M., Bruno, D., Ibáñez, A., Torralva, T., & Duncan, J. (2014). The relationship between executive functions and fluid intelligence in schizophrenia. *Frontiers in behavioral neuroscience*, 8, 46.
- Rodriguez-Fornells, A., Rojo, N., Amengual, J. L., Ripollés, P., Altenmüller, E., & Münte, T. F. (2012). The involvement of audio-motor coupling in the music-supported therapy applied to stroke patients. *Annals of the New York Academy of Sciences*, 1252(1), 282–293. <https://doi.org/10.1111/j.1749-6632.2011.06425.x>
- Roman-Caballero, R., Arnedo, M., Trivino, M., & Lupianez, J. (2018). Musical practice as an enhancer of cognitive function in healthy aging: A systematic review and meta-analysis. *PLoS One*, 13(11), Article e0207957.
- Rönlund, M., Nyberg, L., Bäckman, L., & Nilsson, L. G. (2005). Stability, growth, and decline in adult life span development of declarative memory: Cross-sectional and longitudinal data from a population-based study. *Psychology and aging*, 20(1), 3.
- Salat, D. H., Buckner, R. L., Snyder, A. Z., Greve, D. N., Desikan, R. S. R., Busa, E., Morris, J. C., Dale, A. M., & Fischl, B. (2004). Thinning of the cerebral cortex in aging. *Cerebral Cortex*, 14(7), 721–730. <https://doi.org/10.1093/cercor/bhh032>
- Salthouse, T. A., Atkinson, T. M., & Berish, D. E. (2003). Executive functioning as a potential mediator of age-related cognitive decline in normal adults. *Journal of experimental psychology: General*, 132(4), 566.
- Salthouse, T. A. (2000). Aging and measures of processing speed. *Biological psychology*, 54(1–3), 35–54.
- Salthouse, T. A. (2010). Selective review of cognitive aging. *Journal of the International Neuropsychological Society*, 16(5), 754–760.
- Salthouse, T. A. (2012). Consequences of age-related cognitive declines. *Annual review of psychology*, 63, 201–226.
- Salthouse, T. A. (2009). When does age-related cognitive decline begin? *Neurobiology of aging*, 30(4), 507–514.
- *Santos, M. R. D., Krug, M. S., Brandao, M. R., Leon, V. S. D., Martinotto, J. C., Fonseca, J. D. D., ... Oliveira, A. A. D. (2020). Effects of musical improvisation as a cognitive and motor intervention for the elderly. *Estudos de Psicologia (Campinas)*, 38, e190132.
- Schlaug, G. (2001). The brain of musicians: A model for functional and structural adaptation. *Annals of the New York Academy of Sciences*, 930, 281–299. <https://doi.org/10.1111/j.1749-6632.2001.tb05739.x>
- Schwartz, A. E., van Walsem, M. R., Breaun, A., & Frich, J. C. (2019). Therapeutic use of music, dance, and rhythmic auditory cueing for patients with Huntington's disease: A systematic review. *Journal of Huntington's disease*, 8(4), 393–420.
- *Seinfeld, S., Figueroa, H., Ortiz-Gil, J., & Sanchez-Vives, M. V. (2013). Effects of music learning and piano practice on cognitive function, mood and quality of life in older adults. *Frontiers in Psychology*, 4(NOV). <https://doi.org/10.3389/fpsyg.2013.00810>
- Slivinski, M., & Buschke, H. (1999). Cross-sectional and longitudinal relationships among age, cognition, and processing speed. *Psychology and aging*, 14(1), 18.

- Sluming, V., Brooks, J., Howard, M., Downes, J. J., & Roberts, N. (2007). Broca's area supports enhanced visuospatial cognition in orchestral musicians. *Journal of Neuroscience*, *27*(14), 3799–3806.
- Spieler, D. H., Balota, D. A., & Faust, M. E. (1996). Stroop performance in healthy younger and older adults and in individuals with dementia of the alzheimer's type. *Journal of Experimental Psychology: Human perception and performance*, *22*(2), 461.
- Sterne, J. A. C., Savović, J., Page, M. J., Elbers, R. G., Blencowe, N. S., Boutron, I., ... Higgins, J. P. T. (2019). RoB 2: A revised tool for assessing risk of bias in randomised trials. *The BMJ*, *366*. <https://doi.org/10.1136/bmj.l4898>
- Stoodley, C. J. (2012). The cerebellum and cognition: Evidence from functional imaging studies. *Cerebellum*, *11*(2), 352–365. <https://doi.org/10.1007/s12311-011-0260-7>
- Street, A., Zhang, J., Pethers, S., Wiffen, L., Bond, K., & Palmer, H. (2020). Neurologic music therapy in multidisciplinary acute stroke rehabilitation: Could it be feasible and helpful? *Topics in stroke rehabilitation*, *27*(7), 541–552.
- Strick, P. L., Dum, R. P., & Fiez, J. A. (2009). Cerebellum and nonmotor function. *In Annual Review of Neuroscience (Vol. 32, 413–434)*. <https://doi.org/10.1146/annurev.neuro.31.060407.125606>
- Sutcliffe, R., Du, K., & Ruffman, T. (2020). *Music Making and Neuropsychological Aging: A Review*. *In Neuroscience and Biobehavioral Reviews (Vol. 113., 479–491)*.
- Swaminathan, S., Schellenberg, E. G., & Khalil, S. (2017). Revisiting the association between music lessons and intelligence: Training effects or music aptitude? *Intelligence*, *62*, 119–124. <https://doi.org/10.1016/j.intell.2017.03.005>
- *Thorne, S. A. (2015). *The influence of piano training on cognitive and neural functioning in older adults*. University of Georgia.
- Vaughan, L., & Giovanello, K. (2010). Executive function in daily life: Age-related influences of executive processes on instrumental activities of daily living. *Psychology and aging*, *25*(2), 343.
- Vergheze, J., Lipton, R. B., Katz, M. J., Hall, C. B., Derby, C. A., Kuslansky, G., ... Buschke, H. (2003). Leisure activities and the risk of dementia in the elderly. *New England Journal of Medicine*, *348*(25), 2508–2516.
- Viechtbauer, W. (2010). Conducting meta-analyses in R with the metafor package. *In JSS. Journal of Statistical Software*, *36*. <http://www.jstatsoft.org/>.
- Viechtbauer, W., & Cheung, M.-W.-L. (2010). Outlier and influence diagnostics for meta-analysis. *Research Synthesis Methods*, *1*(2), 112–125. <https://doi.org/10.1002/jrsm.11>
- Wechsler, D. (2008). *Wechsler adult intelligence scale IV*. San Antonio, TX: The Psychological Corporation.
- Wechsler, D. (1987). *Wechsler memory scale-revised*. Psychological Corporation.
- Worschech, F., Altenmüller, E., Jünemann, K., Sinke, C., Krüger, T. H. C., Scholz, D. S., Müller, C. A. H., Kliegel, M., James, C. E., & Marie, D. (2022). Evidence of cortical thickness increases in bilateral auditory brain structures following piano learning in older adults. *Annals of the New York Academy of Sciences*, *1513*(1), 21–30. <https://doi.org/10.1111/nyas.14762>