

Effectiveness of Mental Health and Wellbeing Interventions for Children and Young People in Foster, Kinship, and Residential Care: Systematic Review and Meta-Analysis

TRAUMA, VIOLENCE, & ABUSE
1–16

© The Author(s) 2024



Article reuse guidelines:

sagepub.com/journals-permissions

DOI: 10.1177/15248380241227987

journals.sagepub.com/home/tva



Rob Trubey¹, Rhiannon Evans¹, Sarah McDonald¹, Jane Noyes², Mike Robling¹, Simone Willis¹, Maria Boffey¹, Charlotte Wooders³, Soo Vinnicombe², and G. J. Melendez-Torres⁴

Abstract

The mental health and wellbeing of children and young people who have been in care, primarily foster care, kinship care or residential care, remains a public health priority. The Care-experienced cHildren and young people's Interventions to improve Mental health and wEll-being outcomes Systematic review (CHIMES) synthesized evidence for the effectiveness of interventions targeting: subjective wellbeing; mental, behavioral and neurodevelopmental disorders; and suicide-related outcomes. Searches were conducted in 16 bibliographic databases and 22 websites between 1990 and 2022. This was supplemented by citation tracking, screening of relevant systematic reviews, and expert recommendation. We identified 35 interventions, with 44 evaluations via randomized controlled trials. Through meta-analyses, we found that interventions have a small beneficial impact on a variety of mental health outcomes in the short term (0–6 months). Interventions improved total social, emotional, and behavioral problems ($d = -0.15$, 95% CI $[-0.28, -0.02]$), social-emotional functioning difficulties ($d = -0.18$, 95% CI $[-0.31, -0.05]$), externalizing problem behaviors ($d = -0.30$, 95% CI $[-0.53, -0.08]$), internalizing problem behaviors ($d = -0.35$, 95% CI $[-0.61, -0.08]$); and depression and anxiety ($d = -0.26$, 95% CI $[-0.40, -0.13]$). Interventions did not demonstrate any effectiveness for outcomes assessed in the longer term (>6 months). Certainty of effectiveness was limited by risk of bias and imprecision. There was limited available evidence for interventions targeting subjective wellbeing and suicide-related outcomes. Future intervention design and delivery must ensure that programs are sufficient to activate causal mechanisms and facilitate change. Evaluation research should use a robust methodology.

PROSPERO Registration: CRD42020177478

Keywords

effectiveness, outcome, intervention, mental health, foster care, residential care, systematic review

Introduction

Children and young people with experience of living in care are a diverse population. They can include individuals currently in statutory care or with a history of care placement. Placement types can comprise foster care, kinship care, residential care or other living situations where parental responsibility is transferred to another adult (e.g., Special Guardianship Orders) (Allik et al., 2021). The mental health and wellbeing of this population remains a health and social care priority. They have a higher rate of diagnosable mental health problems when compared to non-care-experienced samples (Dubois-Comtois et al., 2021; Engler et al., 2022; Seker et al., 2021), and are at increased risk of poor

subjective wellbeing (Long et al., 2017) and suicide attempts (Evans et al., 2017). While there is limited longitudinal research, recent evidence from the UK reports that individuals who have been in care have excess mortality in adulthood up to 42 years later, which is attributable to a higher level of

¹Cardiff University, UK

²Bangor University, UK

³The Fostering Network in Wales, London, UK

⁴University of Exeter, UK

Corresponding Author:

Rob Trubey, Centre for Trials Research, Cardiff University, 7th Floor, Neuadd Meirionnydd, Heath Park, Cardiff CF14 4YS, UK.

Email: TrubeyRJ@cardiff.ac.uk

self-harm, accidents, and other mental health and behavioral factors (Murray et al., 2020).

In recent years, there has been a significant increase in interventions targeting the mental health and wellbeing of care-experienced populations. Primarily originating in the USA, the majority of programs have focused on intrapersonal and interpersonal mechanisms of change, notably targeting parenting knowledge, competency, and self-efficacy among foster and kinship carers (Chamberlain, 2003; Green et al., 2014; Price Joseph, 2009; Price Joseph et al., 2019). Other interventions have attended to the social and emotional competencies of children and young people (Taussig & Culhane, 2010; Taussig et al., 2019), while a smaller number of approaches have addressed organizational ethos within social care contexts (Izzo et al., 2016). The evidence-base for intervention remains mixed, as reported across a number of literature and systematic reviews (Bergström et al., 2019; Everson-Hock et al., 2012; Greeson et al., 2020; Hambrick et al., 2016; Kerr & Cossar, 2014; Marsh, 2017; O'Higgins et al., 2018; Solomon et al., 2017; Sullivan & Simonson, 2016). However, recent National Institute for Health and Care reviews and associated practice guidelines have indicated sufficient evidence to recommend a select range of approaches, which largely focus on building positive relationships, training carers, and generating expertise in attachment and trauma-informed approaches among practitioners (National Institute for Health and Care Excellence, 2021b).

Despite progress in intervention research, there remain a number of limitations with the evidence-base, many of which being related to extant evidence syntheses. First, many reviews have lacked a robust methodology (Luke et al., 2014), particularly in relation to meta-analysis, quality appraisal, and the generation of, for example, GRADE evidence summaries to support policy and practice recommendations. Second, syntheses tend to report on a small number of outcomes, notably specific and discrete diagnosable mental health problems (e.g., depression) (Marsh, 2017; Solomon et al., 2017). There has been limited effort to synthesize evidence for a broader range of outcomes, including subjective wellbeing and suicide.

Third, and perhaps most importantly, the effectiveness of interventions according to different follow-up measurement timepoints has not been extensively considered. Evaluation research has explored the challenges of introducing and sustaining change in complex social systems (Moore et al., 2018). While limited, syntheses of intervention process evaluations have reported a range of barriers to participant engagement and continued responsiveness, including a high number of care placement and educational transitions (National Institute for Health and Care Excellence, 2021a). Thus, it is important to understand if programs that have varying times to follow-up report different levels of effectiveness, as participants will likely be at different stages of interacting with the intervention and the wider social system in which it has been delivered.

Taking these limitations together, there is an obvious need to generate high quality and relevant evidence of effectiveness through standard systematic review methodology. Such a review would benefit from considering effects for a broad range of mental health-related outcomes and for interventions assessing outcomes at different timepoints.

Review Aim

The Care-experienced children and young people's Interventions to improve Mental health and well-being outcomes Systematic review (CHIMES) was a mixed-methods review that synthesized international evidence on intervention theories, processes, outcomes, and economic effects (Evans et al., 2021). The purpose of this review and meta-analysis was to:

- Evaluate the effectiveness of interventions evaluated via randomized controlled trials (RCTs) for improving mental health and wellbeing outcomes for care-experienced children and young people

Method

The CHIMES review methodology is described in the study protocol (Evans et al., 2021) and the PROSPERO registry of systematic reviews (CRD42020177478), and an evidence map (Evans, MacDonald et al., 2023) and qualitative review and synthesis (Macdonald et al., 2023) have been reported elsewhere. The outcome synthesis is reported in accordance with the Preferred Reporting Items for Systematic reviews and Meta-Analyses statement (Supplemental Appendix A) (Liberati et al., 2009).

Stakeholder Consultation

Consultation was conducted with three stakeholder groups on commencement of the review: two groups of care-experienced young people; and one group of fostering team managers. These consultations refined and confirmed the scope of the review in terms of priority outcomes for synthesis, with an identified need to consider the effectiveness of interventions targeting wellbeing and suicide-related outcomes. They also explored systematic challenges to longer term delivery of interventions, and sustained improvement in outcomes, which informed the decision to conduct meta-analysis according to two time-points from baseline.

Eligibility Criteria

The parameters of the review were specified in accordance with the Population, Intervention, Comparator, Outcome and Study Design framework. *Population*: Care-experienced children and young people (≤ 25 years old), or the individuals, organizations and communities that might impact them.

Care was defined as foster care, formal kinship care, residential care, or other statutory transfer of parental responsibility to another adult. *Intervention*: Mono-component or multi-component, operating across one or multiple socio-ecological domains (i.e., intrapersonal, interpersonal, organizational, community, and policy). *Comparator*: Usual care or active control. *Outcomes*: (a) Subjective wellbeing (life satisfaction, quality of life, and wellbeing); (b) Mental, behavioral or neurodevelopmental disorders as specified by the International Classification of Disease (ICD)-11; and (c) suicide-related outcomes (self-harm, suicidal ideation, and suicide). *Study Design*: Outcome evaluation conducted via RCT study design with no-treatment control group. Eligibility was limited to high income countries.

Evidence Identification

Study reports were identified from 16 electronic bibliographic databases: Applied Social Sciences Index and Abstracts; British Education Index; Child Development & Adolescent Studies; CINAHL; Embase; Education Resources Information Center; Cochrane Central Register of Controlled Trials; Cochrane Database of Systematic Reviews; Health Management Information Consortium; International Bibliography of the Social Sciences; Medline; PsycINFO; Scopus; Social Policy & Practice; Sociological Abstracts; and Web of Science. Gray literature was identified from 22 relevant health care and social care websites. Searches were undertaken from 1990 which marked the ratification of the United Nations Convention on the Rights of the Child (UNICEF, 1989), and an international expansion in social care provision for children and young people. There was no language restriction. Searches were conducted May–June 2020, and updated April–May 2022. A search strategy was developed and tested in Ovid MEDLINE before being adapted to the functionality of each database and website (Supplemental Appendix A). In addition, a total of 32 subject experts and 17 third sector organizations were contacted for recommendations. Relevant systematic reviews were searched, study reports of potential interest were screened and citation tracking was conducted with included study reports.

Study Selection

Retrieved study reports were exported to EndNote for deduplication and then imported to the Evidence for Policy and Practice Information and Co-ordinating (EPPI) Centre's review software EPPI-Reviewer version 4.0 (EPPI-Centre) for management. One reviewer screened study titles for clearly irrelevant retrievals. Irrelevant reports were checked by a second reviewer. Two reviewers screened title and abstracts independently and in duplicate. The same process was followed for full texts. A screening proforma was

developed and calibrated with a subset of studies, which then guided eligibility assessments.

Data Extraction and Data Items

A standardized data extraction form was developed and calibrated in EPPI-Reviewer 4. Extraction items were converted into a coding tree that included selectable a priori defined items and free text coding. A subset (10%) of study reports were extracted independently and in duplicate, with the remainder being coded by one reviewer and checked by a second. Any discrepancies were resolved through discussion.

Evaluations were extracted according to the primary extraction domains: study design; population (setting; target population; inclusion and exclusion criteria; intervention participants; group comparability at baseline; and baseline difference); study arms and duration; analysis; effectiveness outcomes; mediators; and moderators. We also extracted secondary domains of: method of recruitment; method of randomization; unit of randomization; cluster randomization; blinding; allocation sequence; allocation concealment; total sample size; and power calculation.

Risk of Bias Assessment

Evaluations were appraised with the Cochrane risk-of-bias tool for randomized trials (RoB 2) (Higgins et al., 2019). Assessments were undertaken independently and in duplicate by two reviewers, with disagreement resolved through discussion or recourse to a third member of the review team.

Summary of Measures

We classified outcomes according to protocol-specified outcome domains: child subjective wellbeing; child mental, behavioral, and neurodevelopmental disorders; and child suicide-related outcomes. Within these categories, we defined several mutually exclusive sub-categories and harmonized across studies to classify study-reported effects. These are summarized in Table 1.

Outcome Synthesis

A narrative summary and descriptive tables were constructed to present the results of outcome evaluations. Meta-analyses were conducted for outcome sub-domains for which there were sufficient effect sizes available. This was for sub-domains of mental, behavioral or neurodevelopmental disorders, as specified by ICD-11. Within each sub-domain, meta analyses were conducted separately for “short-term” outcomes (outcomes measured up to and including 6 months after baseline), and “long-term” outcomes (outcomes measured more than 6 months after baseline). There was not an

Table 1. Summary of Outcome Domains and Sub-Domains.

Outcome Domain	Sub-Domain	Description
Subjective wellbeing	Quality of life	Reports of children and young people's quality of life, or health-related quality of life.
	Subjective wellbeing	Any subjective reports of children and young people's personal wellbeing, excluding quality of life and subjective mental health.
Mental, behavioral, and neurodevelopmental disorders	Life satisfaction	Reports of children and young people's overall satisfaction with life, as distinct from subjective wellbeing or mental health.
	Total social, emotional, and behavioral problems	Aggregate scores of all social, emotional and behavioral problems as measured by for example, CBCL or SDQ, or measures of total problem behaviors per day (e.g., PDR).
	Total social-emotional functioning and/or impaired functioning	Included measures of social-emotional functioning, global functioning, "total difficulties," peer problems, conduct problems, emotional regulation and mental health functioning.
	Internalizing behavior problems	Behavior problems or disorders manifested in children's internal psychological state. Included measures of withdrawal, somatic complaints, but excluded anxiety/depression. Typically reported as a sub-scale of total problem behaviors in, for example, CBCL.
	Externalizing behavior problems	Behavior problems or disorders manifested in children's outward behavior. Included measures of anger, aggression, rule-breaking, "delinquency". Typically reported as a sub-scale of total problem behaviors in, for example, CBCL.
	Anxiety and depression	Reports of anxiety or depression, as measured by DSM or reported as sub-scales of standardized measures such as CBCL.
Self-harm and suicide	Stress, post-traumatic stress and trauma	Including measures of post-traumatic symptoms or severity and dissociation, measured by, for example, TSCYC.
	Attachment disorder	Diagnoses of attachment disorders including reactive attachment disorder.
	Attention and hyperactivity disorder	Measures of hyperactivity and inattention, as measured by, for example, SDQ.
		Outcomes relating to suicidal ideation, self-harm, attempted suicide, or suicide.

Note. CBCL = Child Behavioral Checklist; PDR = Parent Daily Report; SDQ = Strengths and Difficulties Questionnaire; TSCYC = Trauma Symptom Checklist for Young Children.

adequate number of studies to conduct meta-analyses for the outcome domains of subjective wellbeing or suicide-related outcomes.

For the meta-analysis, effect estimates were extracted. Estimates from cluster randomized trials were checked for unit of analysis issues.

Robust variance estimation meta-analyses were undertaken according to outcome and timepoint, considering up to 6 months from baseline as short-term outcomes, and outcomes measured beyond 6 months to be longer-term. Robust variance estimation meta-analysis is a method that permits the inclusion of more than one effect estimate per study in a meta-analysis; this contrasts with standard meta-analysis models that assume independence between individual effect estimates. It is common in meta-analysis of psychosocial interventions for outcome evaluations to present multiple relevant effect estimates per outcome (e.g., multiple estimates of child behavioral problems per respondent). This method permitted use of all relevant information from included studies. Within each meta-analysis, heterogeneity was examined with a combination of Cochran's Q , tau-squared and I^2 . We undertook a random-effects meta-analysis due to the expected high levels of clinical heterogeneity in interventions and populations. All meta-analyses were undertaken in Stata v 17 (Statacorp, 2023) using `-robumeta-` (Pustejovsky & Tipton, 2022).

GRADE Assessment

Certainty of evidence was assessed with use of GRADE tools for RCTs (Guyatt et al., 2011; Ryan & Hill, 2016). Certainty was assessed for short-term and long-term outcome sub-domains relating to: subjective wellbeing; mental, behavioral, and neurodevelopmental disorders; and suicide-related outcomes. An assessment was made to ascertain if an individual study was biased or unbiased for each outcome, which was largely derived from the quality appraisals. RCTs had a baseline rate of high certainty and non-randomized studies a low certainty rating. Certainty was rated down according to: risk of bias; imprecision; inconsistency; indirectness; and publication bias. Certainty was rated up for: large magnitude of effect; dose-response gradient; and residual confounding would decrease the magnitude of effect (where this is an effect). Certainty of the evidence per outcome was assessed according to very low, low, moderate, and high.

Results

Study Selection

Of 7,683 unique retrieved records, we included 44 eligible RCT evaluations of 35 interventions (Figure 1). Four evaluations were not eligible to be included in meta-analysis due to insufficient available data (Supplemental Appendix B).

Study Characteristics

Study characteristics are summarized in Table 2 and detailed in full in Supplemental Appendix C. Of the 44 synthesized RCT evaluations, the majority ($n=25$) were conducted in the United States, with eight evaluations conducted in the United Kingdom. Interventions primarily operated across the intrapersonal and interpersonal domains. Six interventions, with six associated study reports, targeted the intrapersonal domain (Betzael & Shechtman, 2010; Clark Hewitt et al., 1994; Geenen et al., 2012; Jee et al., 2015; Reddy Sheethal et al., 2013; Schuurmans Angela et al., 2018). Twenty-one interventions, with 28 associated evaluations, targeted the interpersonal domain. Seven interventions, with nine associated study reports, targeted both domains (Bittman et al., 2009; Crespo et al., 2020; Dozier et al., 2006; Haight et al., 2010; Marquis, 2014; Midgley et al., 2019; Sprang, 2009; Taussig & Culhane, 2010; Taussig et al., 2019). There was one RCT evaluation of an intervention targeting the interpersonal, organizational, and community domains. The Fostering Individualized Assistance Program delivers intensive, personalized support services across agencies (Clark Hewitt et al., 1994). Only one RCT evaluation assessed a policy-level intervention: Head Start (Lipscomb et al., 2013). The duration of interventions ranged from 3 weeks to 18 months. Most interventions lasted a minimum of 2 months, with 13 interventions (and 17 associated evaluations), lasting for 5 months or more.

Risk of Bias

Risk of bias assessments for the 44 included RCT studies are shown in Supplemental Appendix D. In total, six RCT evaluations were judged to have a high overall risk of bias (Alderson et al., 2020; Biehal et al., 2012; Job et al., 2022; Lipscomb et al., 2013; Mezey, Robinson et al., 2015; Suomi et al., 2020), with the remainder evaluated as having "some concern" of overall bias.

Outcome Synthesis

Subjective Wellbeing. No evaluations assessed subjective wellbeing or life satisfaction. Three evaluations of two interventions assessed quality of life with child-reported measures at short and long-term follow-up (Crespo et al., 2020; Taussig & Culhane, 2010; Taussig et al., 2019). Fostering Healthy Futures (FHF) reported significantly better quality of life at post-intervention (5 months post baseline) compared to the control group ($d=0.42$, 95% CI [0.12, 0.71]) (Taussig & Culhane, 2010). No group differences existed at 6-month follow-up in the same cohort, and there were no significant differences observed in long-term quality of life measures in a later extension of the same study (Taussig et al., 2019). No group differences in quality of life were observed in the Wave-by-Wave intervention (Crespo et al.,

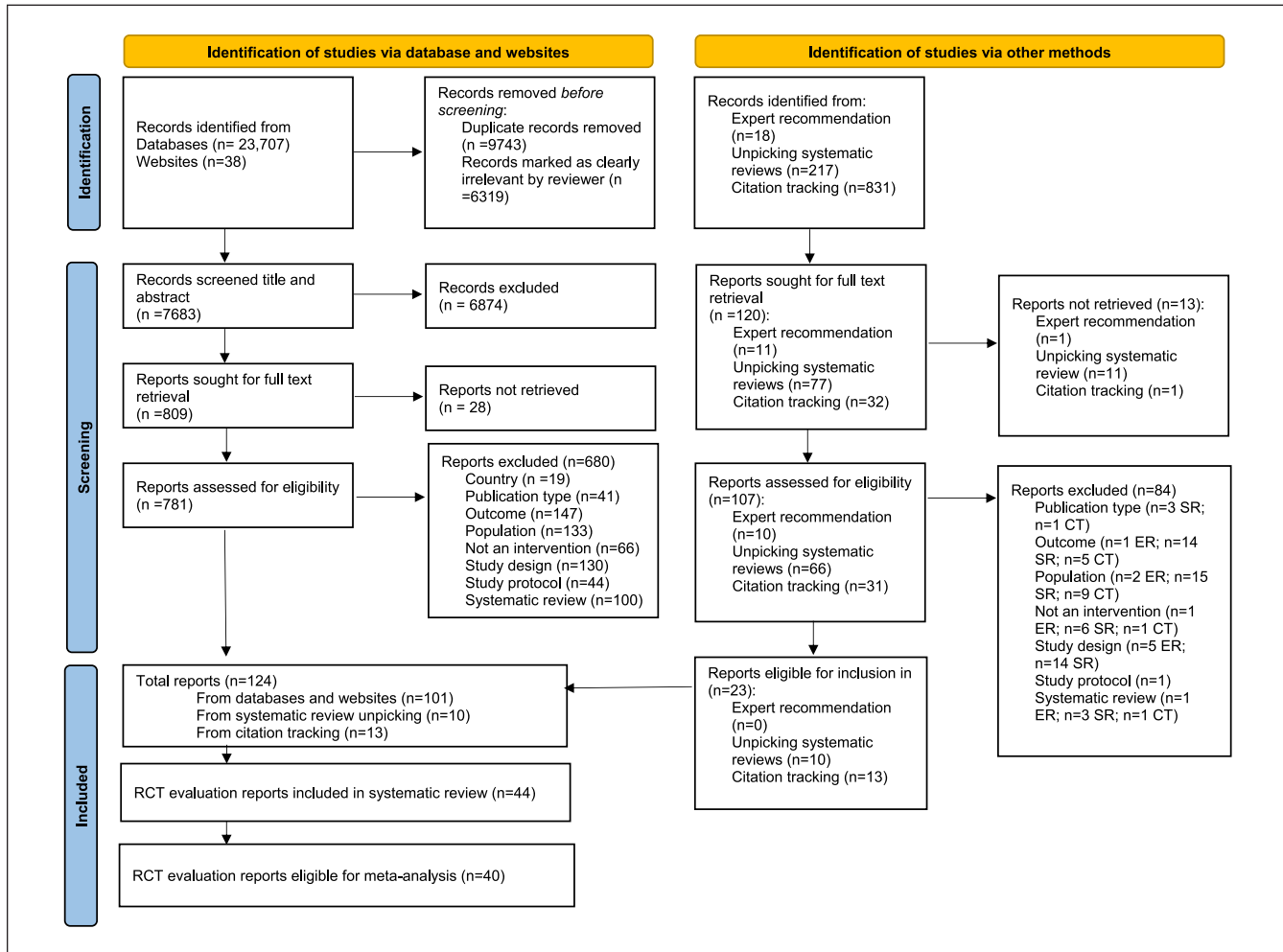


Figure 1. Preferred Reporting Items for Systematic reviews and Meta-Analyses flow diagram of study report retrieval.

2020). There were insufficient data available to conduct a meta-analysis for this outcome domain.

Mental, Behavioral, and Neurodevelopmental Disorders

Total Social, Emotional and Behavioral Problems. Seventeen evaluations of 14 interventions reported outcomes relating to total social, emotional, and behavioral problems (Supplemental Appendix E), of which 15 evaluations were eligible for inclusion in the meta-analysis. Collectively, interventions demonstrated a small but significant effect for reducing problem behaviors in the short-term ($d = -0.15$, 95% CI $[-0.28, -0.02]$) (Figure 2). The meta-analysis of short-term outcomes included twenty effect sizes from eleven evaluations, with substantial between-studies heterogeneity ($I^2 = 62\%$). However, there was no evidence that interventions reduced total problem behaviors at longer-term follow-up ($d = -0.07$, 95% CI $[-0.38, 0.25]$) (Figure 2). For meta-analysis of longer-term

outcomes, we included twelve effect sizes from six evaluations and observed moderate heterogeneity ($I^2 = 56\%$).

Total Social-Emotional Functioning and/or Impaired Functioning. Seventeen RCT evaluations of 14 interventions reported outcomes relating to social, emotional, and behavioral functioning and/or impaired functioning (Supplemental Appendix E), of which 16 evaluations of 13 interventions were eligible for inclusion in meta-analysis.

Collectively, interventions demonstrated a small but significant effect for reducing social-emotional functioning difficulties in the short-term ($d = -0.18$, 95% CI $[-0.31, -0.05]$) (Figure 3). The analysis included 28 effect sizes from ten evaluations, with moderate between-studies heterogeneity ($I^2 = 53\%$). When evaluated at longer-term follow-up, interventions showed some effect at reducing social-emotional functioning difficulties, with the effect approaching but not reaching statistical significance ($d = -0.15$, 95% CI $[-0.40,$

Table 2. Summary of Included Study Characteristics.

Domain	N	%
Country		
USA	25	56.8
UK	8	18.2
Netherlands	3	6.8
Belgium	2	4.5
Australia	2	4.5
Portugal	1	2.3
Canada	1	2.3
Germany	1	2.3
Israel	1	2.3
Socio-ecological domain targeted		
Interpersonal	28	63.6
Intrapersonal	5	11.4
Interpersonal and intrapersonal	9	20.5
Organizational and community	1	2.3
Policy	1	2.3
Primary target population		
Children and young people	15	34.1
Foster carers	9	20.5
Biological parents	1	2.3
Multiple	19	43.2
Intervention duration		
2–7 weeks	8	18.2
8–16 weeks	19	43.2
17–20 weeks	0	0.0
>20 weeks	17	38.6
Children and young people age group		
Infants/pre-school (0–5)	8	18.2
Younger children (6–11)	29	65.9
Young adolescents (12–16)	11	25.0
Older adolescents (>16)	3	6.8
Follow-up assessment period		
Short-term only (0–6 months)	26	59.1
Long-term only (>6 months)	15	34.1
Short and long-term	3	6.8

0.09]) (Figure 3). For longer-term follow-ups, we included 14 effect sizes from 8 evaluations and observed substantial heterogeneity ($I^2=63\%$).

Internalizing Behavior Problems. Nineteen evaluations of 19 interventions reported outcomes relating to internalizing behavior problems, of which 18 evaluations were eligible for inclusion in meta-analysis. Collectively, interventions demonstrated a medium effect for reducing internalizing problem behaviors in the short-term ($d=-0.35$, 95% CI $[-0.61, -0.08]$) (Figure 4). The analysis included 32 effect sizes from twelve evaluations, with substantial between-studies heterogeneity ($I^2=74\%$). However, there was no evidence that interventions reduced internalizing problem behaviors

when evaluated at longer-term follow-up ($d=-0.03$, 95% CI $[-0.31, 0.25]$) (Figure 4). For longer-term follow-ups, we included 16 effect sizes from 7 evaluations and observed moderate heterogeneity ($I^2=53\%$).

Externalizing Behavior Problems. Twenty-seven evaluations of 26 interventions reported outcomes relating to externalizing behavior problems, of which 24 evaluations were eligible for inclusion in meta-analysis (Supplemental Appendix E). Collectively, interventions demonstrated a medium effect for reducing externalizing problem behaviors in the short-term ($d=-0.30$, 95% CI $[-0.53, -0.08]$) (Figure 5). The analysis included 54 effect sizes from 18 evaluations, with substantial between-studies heterogeneity ($I^2=73\%$). However, there was no evidence that interventions reduced externalizing problem behaviors when evaluated at longer-term follow-up ($d=0.02$, 95% CI $[-0.17, 0.20]$) (Figure 5). For longer-term follow-ups, we included 19 effect sizes from 9 evaluations and observed moderate heterogeneity ($I^2=45\%$).

Anxiety and Depression. Twelve evaluations of twelve interventions reported outcomes relating to anxiety and depression (Supplemental Appendix E), all of which were eligible for meta-analysis. Collectively, interventions demonstrated a medium effect for reducing scores on measures of anxiety and depression in the short-term ($d=-0.26$, 95% CI $[-0.40, -0.13]$), relative to control groups (Figure 6). The analysis included forty effect sizes from eight evaluations, with minimal between-studies heterogeneity ($I^2=8\%$). There were insufficient available effect sizes to conduct a meta-analysis of long-term (>6 months follow-up) intervention effects.

Other Outcome Domains. Four evaluations of three interventions assessed stress, post-traumatic stress disorder (PTSD) and trauma (Supplemental Appendix E), with evidence of fewer dissociative symptoms at 6-month follow up in a 2010 ($d=-0.29$, 95% CI $[-0.50, -0.09]$) and a linked 2019 evaluation of Fostering Healthy Futures (Taussig & Culhane, 2010; Taussig et al., 2019), but no group differences in post-traumatic symptoms. One evaluation assessed child attachment disorder, with no evidence of effectiveness at 9-month follow-up (Minnis et al., 2001). Two evaluations of two interventions reported outcomes for children and young people's attention and hyperactivity. Neither intervention demonstrated effectiveness (Adkins et al., 2021; Moody et al., 2020). For each of these domains, there was an insufficient number of effect sizes to conduct meta-analysis.

Self-harm and Suicide. Two intervention evaluations measured self-harm and suicide-related outcomes (suicide attempt, suicidal-ideation, self-harm incidents), but neither reported any significant group differences (Bittman et al.,

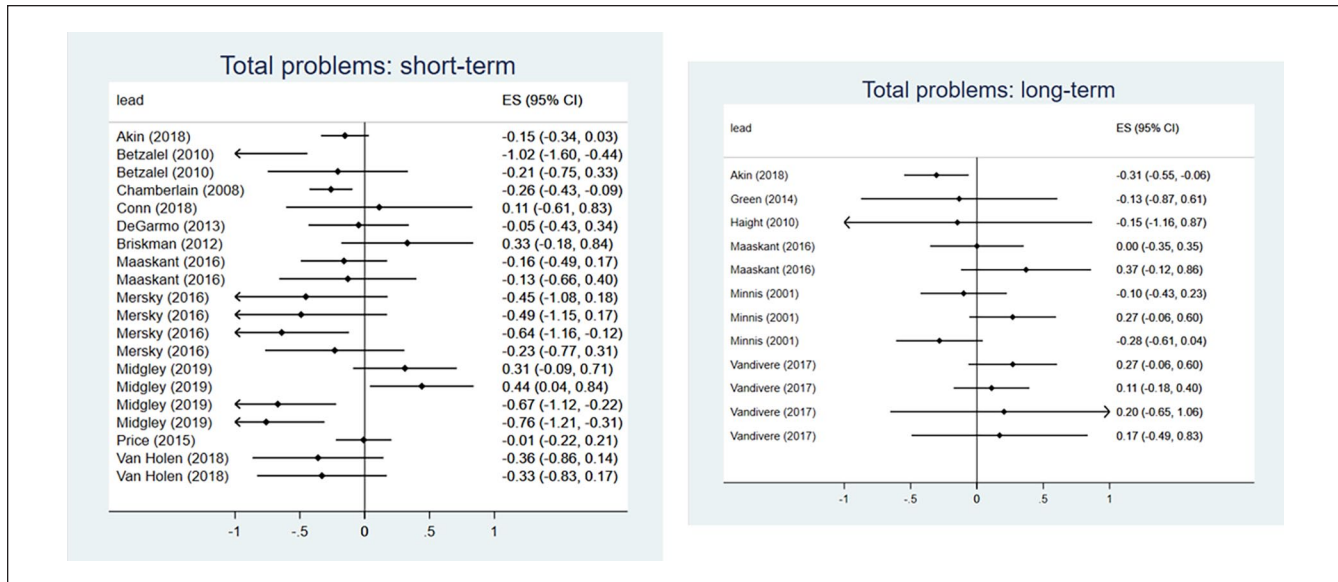


Figure 2. Meta-analysis forest plots for total social, emotional, and behavioral problems: short-term and long-term outcomes.

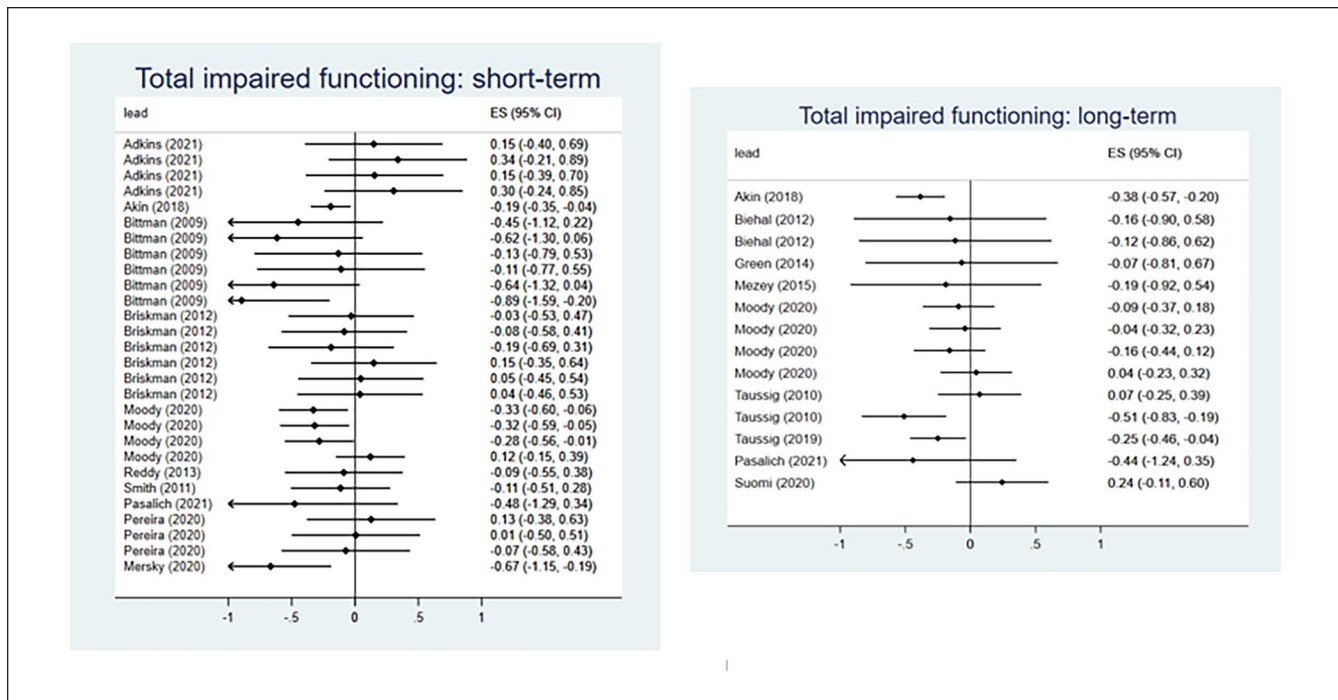


Figure 3. Meta-analysis forest plots for total social-emotional functioning: shorter-term and longer-term outcomes.

2009; Mezey et al., 2015). There were insufficient data to conduct a meta-analysis for this outcome domain.

GRADE Assessment of Certainty

GRADE assessments are shown in Supplemental Appendix F. For short-term outcomes, we assessed there to be low

certainty of effectiveness for interventions targeting total problem behaviors, social-emotional functioning, and externalizing problems. For each of these domains, we assessed a serious risk of bias and serious imprecision. All other outcome domains were assessed as being of very low certainty of evidence, based on serious risk of bias and very serious imprecision. All long-term outcome domains were assessed

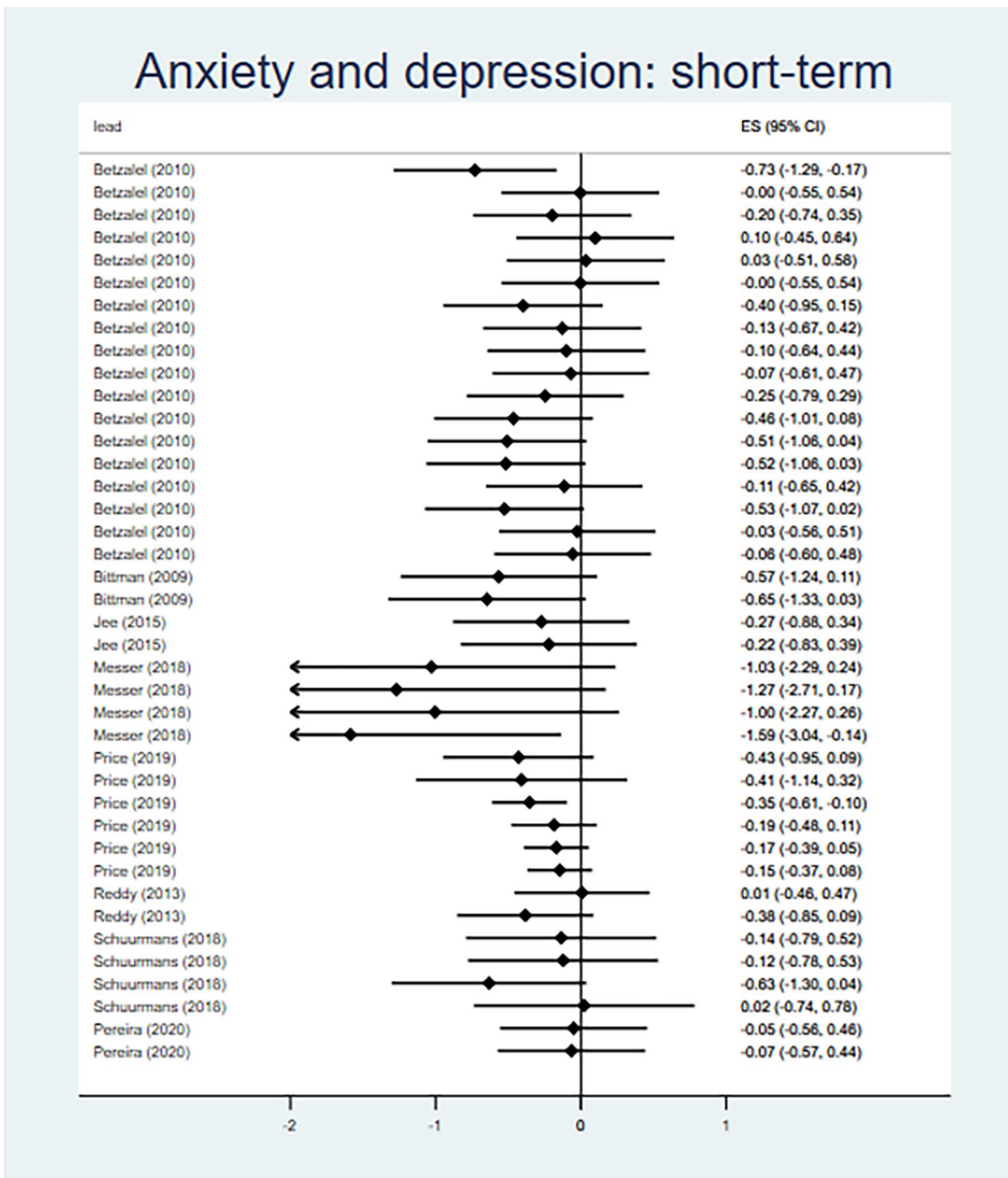


Figure 6. Meta-analysis forest plots for anxiety and depression: short-term outcomes.

as having very low certainty of effectiveness due to the same risk of bias and serious imprecision concerns.

Discussion

In the CHIMES systematic review, we synthesized evidence of effectiveness for interventions targeting the mental health

and wellbeing of care-experienced children and young people, as evaluated via an RCT study design. Included interventions primarily operated at the intrapersonal and interpersonal level, focusing on the social and emotional competencies of young people, supporting the development of carer knowledge, skills and self-efficacy, and facilitating positive relationships between young people and significant others.

While the existing evidence-base tends to synthesize evidence for a limited range of outcomes, the current meta-analysis found that interventions positively supported a range of mental health-related outcomes, namely: total social, emotional, and behavioral problems; social-emotional functioning; externalizing problem behaviors; internalizing problem behaviors; and depression and anxiety. However, these effects were only observed where post-baseline measurements were assessed within 6 months. For post-baseline measurements for more than 6 months, no significant positive impacts were detected. As existing reviews of interventions for this population have tended to aggregate findings across follow-up intervals, and have not conducted meta-analysis according to length to follow-up, it is not known if the review findings reflect the wider evidence-base.

Although it is important not to speculate why there are differences between shorter-term and longer-term outcome measurements, there are a couple of areas that would be expedient to explore further. Firstly, the underpinning mechanisms of change in existing interventions may not be sufficient to generate long-term change. This may be particularly true of brief interventions with longer-term follow-up, where participants may be unsupported in the sustained enactment of change (e.g., application of new parenting techniques) and efforts to change are inhibited by entrenched and seemingly intractable system structures that reinforce the status quo (e.g., culturally endorsed parenting norms) (Kirton & Thomas, 2011; Lotty et al., 2020). This reflects wider concerns within intervention research: that approaches are often minimally disruptive and do not sufficiently target structural drivers of the problem or reconfigure contextual features to support change (Hawe, 2015; Moore et al., 2018). Second, for longer interventions with long-term follow-up, there may be issues around implementation. As a result, participants may not receive the intervention as intended. For example, process evaluations of brief interventions that provide concentrated training to carers show that interventions are often well attended with high levels of fidelity and acceptability (Evans, Trubey et al., 2023). More complex and prolonged interventions can be hampered by resource issues and the fact that care-experienced individuals denote a somewhat transient population (Evans, Trubey et al., 2023; Mezey et al., 2015).

There are a range of limitations with the evidence-base. In terms of scope, there is a clear lack of interventions targeting wellbeing and suicide-related outcomes. This paucity has been identified with more widely, with limited approaches for those involved in child protection services (Russell et al., 2021). Interventions to target these outcomes are imperative, as research indicates that care-experienced populations report relatively pronounced adversity when compared to non-care-experienced peers (Bronard et al., 2016; Engler et al., 2022; Ford et al., 2018; Long et al., 2017).

Included intervention evaluations were also characterized by major methodological limitations, with significant risk of

bias noted in many instances. Quality appraisal identified key issues, including “risk of bias from measurement of outcomes,” with outcomes typically self-reported by children and young people or reported by carers (or in some instances teachers or clinicians) who were unblinded to group allocations. In several instances, there were notable discrepancies between children and young people’s self-reported outcomes and the same outcomes as reported by adults.

Review Limitations

The review has several limitations that should be considered when interpreting the findings. First, to support meta-analysis, follow-up time from baseline was categorized as 6 months and less or more than 6 months. Within each time frame, interventions delivery ranged from a few days to a few months. This meant that in some instances follow-up outcomes were measured immediately post-intervention and in other cases they were measured after a significant period following completion of intervention. As such, it is not possible to clearly ascertain if the lack of long-term effectiveness was linked to intervention duration. The trend for beneficial short-term effects for some outcomes may also have been influenced by studies measuring outcomes immediately post-intervention—although examination of the data suggests that studies reporting significant short-term effectiveness varied in follow-up time. Due to the diversity of intervention length and limited availability of data on intervention length, it was not possible to conduct further meta-analysis by duration—we cannot rule out the possibility, therefore, that intervention duration was an important component for driving short-term effectiveness. Second, evaluations tended to report group outcomes for the whole study sample, and it was not possible to disaggregate data for participants according to gender, ethnicity, and placement types, which are known predictors of mental health (Kennedy et al., 2022). Progress in assessing outcomes for diverse groups in primary evaluations would allow future reviews to look at variation in effectiveness within the heterogeneous care-experienced population.

Implications for Future Research

The review has several possible implications for future research. There is an evident need to develop and evaluate interventions that target subjective wellbeing and suicide-related outcomes. For all intervention development in this area, there needs to a clear focus on understanding the mechanisms through which interventions will bring about change, how change may be sustained over a longer period, and how contextual factors may inhibit or facilitate this process (Skivington et al., 2021). Such interventions need to be responsive to local context and their intended populations and should be developed with input and support from children and young people and other key stakeholders.

Centrally, there needs to be an improvement in the quality of evaluation of interventions for care-experienced populations. Conduct of RCTs have been well documented, with reported issues regarding randomization and contamination of intervention arms (Mezey et al., 2015). Recruiting and retaining participants from this population, particularly over longer-term follow-up periods, is always likely to be challenging. Regardless, there needs to be further work to anticipate and mitigate such risks of bias. Use of key methodological frameworks such as the Medical Research Council guidance for developing and evaluating interventions be supportive in ensuring a high-quality study design (Skivington et al., 2021). Improved reporting of interventions and their associated evaluations, structured with the use of key reporting guidelines, will also help strengthen future systematic reviews (Schulz et al., 2010).

Recommendations for Policy and Practice

There is currently some evidence that interpersonal and intrapersonal interventions can have some short-term beneficial effects on care-experienced children and young people's mental, behavioral, and neurodevelopmental outcomes. However, policy makers and practitioners need to be

conscious that care-experienced children and young people will likely need ongoing, structural support to sustain the effects of relatively short-term interventions. There is a pressing need for broader interventions in this area that target organizational, community, or policy-level change, and which may be more successful in supporting and sustaining long-term change. Such interventions will likely require significant investment of resources, and collaboration between policy makers and practitioners.

Conclusions

The CHIMES review and meta-analysis identified that available interventions report some positive impacts on mental, behavioral, and neurodevelopmental disorders in the short term, but these are not achieved in the longer term. In both cases, certainty of effectiveness is constrained by methodological limitations including risk of bias and imprecision. There was a lack of available data for subjective wellbeing and suicide-related outcomes, with individual interventions reporting limited effectiveness. Future research requires more robust evaluation and further exploration as to why interventions may struggle to achieve effects when delivered and evaluated over a longer time-frame.

Critical Findings

- We identified 35 unique interventions evaluated by randomized controlled trials aimed at improving outcomes for children and young people in care—primarily evaluated in the United States or United Kingdom
- The current landscape is characterized by interventions operating at an interpersonal or intra-personal level—with very few interventions targeting organizational, community or policy-level change
- There is some evidence that existing interventions have beneficial effects on children and young people's mental, behavioral, or neurodevelopmental outcomes in the short term (up to 6 months after interventions commence)
- However, there is currently very little evidence that these benefits are sustained beyond 6 months follow-up
- There are several methodological limitations with evaluations—including risk of bias and imprecision—that limit certainty in the effectiveness of current interventions

Implications for Practice, Policy, and Research

- Policy makers and practitioners need to be conscious about the needs of children and young people in care—and their carers—there needs to be ongoing, structural support to sustain the effects of relatively short-term interventions
 - There is a pressing need for interventions in this area that target organizational, community, or policy-level change, and which may be more successful in supporting and sustaining long-term change. Such interventions will likely require significant investment of resources and collaboration between policy-makers and practitioners.
 - Evaluations of interventions are currently focused narrowly on outcomes relating to behavioral outcomes, with some mental health and neurodevelopmental outcomes—evaluations that assess a wider range of child-level outcomes, including subjective well-being and self-harm and suicide-related outcomes, are needed
 - Use of methodological frameworks, and improved reporting of interventions and their associated evaluations, will strengthen future systematic reviews and the existing evidence-base for interventions in this area
-

Acknowledgments

The CHIMES review team acknowledge the support of the Project Advisory Group, participants of stakeholder consultations, Dr Asmaa El-Banna, Dr Helen Morgan, Lindsey Allan, Payton Ramsey, Rohen Renold, Lorna Stabler and Rachael Vaughan.

Data availability

Extracted data, analysis and syntheses are available from the corresponding author on reasonable request.

Declaration of Conflicting Interests

The author(s) declared no potential conflicts of interest with respect to the research, authorship, and/or publication of this article.

Funding

The author(s) disclosed receipt of the following financial support for the research, authorship, and/or publication of this article: This work was supported by the NIHR-PHR grant number NIHR129113. This work was supported by The Centre for Development,


Evaluation, Complexity and Implementation in Public Health Improvement (DECIPHer) funded by Welsh Government through Health and Care Research Wales. The Centre for Trials Research receives funding from Health and Care Research Wales and Cancer Research UK. The National Centre for Population Health and Wellbeing Research receives funding from Health and Care Research Wales.


Ethical Approval

The CHIMES review was exempted from ethical approval from Cardiff University's School of Social Sciences Research Ethics Committee.

ORCID iDs

Rob Trubey  <https://orcid.org/0000-0002-9550-1785>

Simone Willis  <https://orcid.org/0000-0003-3949-7651>

G. J. Melendez-Torres  <https://orcid.org/0000-0002-9823-4790>

Supplemental Material

Supplemental material for this article is available online.

References

- Adkins, T., Reisz, S., Hasdemir, D., & Fonagy, P. (2021). Family minds: A randomized controlled trial of a group intervention to improve foster parents' reflective functioning. *Development and Psychopathology*, *34*(3), 1177–1191. <https://doi.org/10.1017/S095457942000214X>
- Alderson, H., Kaner, E., Brown, R., Howel, D., McColl, E., Smart, D., Copello, A., Fouweather, T., McGovern, R., Brown, H., McArdle, P., & Lingam, R. (2020). Behaviour change interventions to reduce risky substance use and improve mental health in children in care: The SOLID three-arm feasibility RCT. *Public Health Research*, *8*, 13. <https://doi.org/10.3310/phr08130>
- Allik, M., Brown, D., Taylor Browne Lūka, C., Macintyre, C., Leyland, A. H., & Henderson, M. (2021). Cohort profile: The “Children’s Health in Care in Scotland” (CHiCS) study—a longitudinal dataset to compare health outcomes for care experienced children and general population children. *BMJ Open*, *11*(9), e054664. <https://doi.org/10.1136/bmjopen-2021-054664>
- Bergström, M., Cederblad, M., Håkansson, K., Jonsson, A. K., Munthe, C., Vinnerljung, B., Wirtberg, I., Östlund, P., & Sundell, K. (2019). Interventions in foster family care: A systematic review. *Research on Social Work Practice*, *30*(1), 3–18. <https://doi.org/10.1177/1049731519832101>
- Betzalel, N., & Shechtman, Z. (2010). Bibliotherapy treatment for children with adjustment difficulties: A comparison of affective and cognitive bibliotherapy. *Journal of Creativity in Mental Health*, *5*(4), 426–439. <https://doi.org/10.1080/15401383.2010.527816>
- Biehal, N., Dixon, J., Parry, E., Sinclair, I., Green, J., Roberts, C., Kay, C., Rothwell, J., Kapadia, D., & Roby, A. (2012). *The care placements evaluation (CaPE) evaluation of multidimensional treatment foster care for adolescents (MTFC-A)*, Department for Education (vol. 8).
- Bittman, B., Dickson, L., & Coddington, K. (2009). Creative musical expression as a catalyst for quality-of-life improvement in inner-city adolescents placed in a court-referred residential treatment program. *Advances in Mind-Body Medicine*, *24*(1), 8–19. <https://www.scopus.com/inward/record.uri?eid=2-s2.0-79952198321&partnerID=40&md5=323193c6e14a31a810c1ef23ec0deb5c>
- Bronsard, G., Alessandrini, M., Fond, G., Loundou, A., Auquier, P., Tordjman, S., & Boyer, L. (2016). The prevalence of mental disorders among children and adolescents in the child welfare system: A systematic review and meta-analysis. *Medicine*, *95*(7), e2622. <https://doi.org/10.1097/MD.0000000000002622>
- Chamberlain, P. (2003). The oregon multidimensional treatment foster care model: Features, outcomes, and progress in dissemination. *Cognitive and Behavioral Practice*, *10*(4), 303–312. <https://doi.org/10.1016/S1077-7229%2803%2980048-2>
- Clark Hewitt, B., Prange Mark, E., Lee, B., Boyd, L. A., McDonald Beth, A., & Stewart Elizabeth, S. (1994). Improving adjustment outcomes for foster children with emotional and behavioral disorders: Early findings from a controlled study on individualized services. *Special Series: Center for Mental Health Services Research Projects*, *2*(4), 207–218. <https://doi.org/10.1177/106342669400200403>
- Crespo, C., Roberto, M., & Pereira, A. (2020). Effectiveness of a combined surf and psychological preventive intervention with children and adolescents in residential childcare: A randomized controlled trial. *Revista de Psicología Clínica con Niños y Adolescentes*, *7*, 22–31. <https://doi.org/10.21134/rpcna.2020.07.2.3>
- Dozier, M., Peloso, E., Lindhiem, O., Gordon, M. K., Manni, M., Sepulveda, S., Ackerman, J., Bernier, A., & Levine, S. (2006). Developing evidence-based interventions for foster children: An example of a randomized clinical trial with infants and toddlers. *Journal of Social Issues*, *62*(4), 767–785. <https://doi.org/10.1111/j.1540-4560.2006.00486.x>
- Dubois-Comtois, K., Bussi eres, E.-L., Cyr, C., St-Onge, J., Baudry, C., Milot, T., & Labb e, A.-P. (2021). Are children and adolescents in foster care at greater risk of mental health problems than their counterparts? A meta-analysis. *Children and Youth Services Review*, *127*, 106100. <https://doi.org/10.1016/j.chilyouth.2021.106100>
- Engler, A. D., Sarpong, K. O., Van Horne, B. S., Greeley, C. S., & Keefe, R. J. (2022). A systematic review of mental health disorders of children in foster care. *Trauma, Violence, & Abuse*, *23*(1), 255–264.
- Evans, R., Boffey, M., MacDonald, S., Noyes, J., Melendez-Torres, G., Morgan, H. E., Trubey, R., Robling, M., Willis, S., & Wooders, C. (2021). Care-experienced children and young people’s Interventions to improve Mental health and well-being outcomes: Systematic review (CHIMES) protocol. *BMJ Open*, *11*(1), e042815.
- Evans, R., White, J., Turley, R., Slater, T., Morgan, H., Strange, H., & Scourfield, J. (2017). Comparison of suicidal ideation, suicide attempt and suicide in children and young people in care and non-care populations: Systematic review and meta-analysis of prevalence. *Children and Youth Services Review*, *82*, 122–129.
- Evans, R. M., S., Trubey, R., Noyes, J., Robling, M., Willis, S., Vinnicombe, S., Boffey, M., Wooders, C., El-Banna, A., & Melendez-Torres, G. J. (2023). *Care-experienced children and young people’s Interventions to improve Mental health and well-being outcomes: Systematic review*. N. Public Health Library.
- Evans, R., MacDonald, S., Trubey, R., Noyes, J., Robling, M., Willis, S., Boffey, M., Wooders, C., Vinnicombe, S., &

- Melendez-Torres, G. J. (2023). Interventions targeting the mental health and wellbeing of care-experienced children and young people in higher-income countries: Evidence map and systematic review. *Systematic Reviews, 12*, 111.
- Everson-Hock, E. S., Jones, R., Guillaume, L., Clapton, J., Goyder, E., Chilcott, J., Payne, N., Duenas, A., Sheppard, L. M., & Swann, C. (2012). The effectiveness of training and support for carers and other professionals on the physical and emotional health and well-being of looked-after children and young people: A systematic review. *Child: Care, Health and Development, 38*(2), 162–174. <https://doi.org/10.1111/j.1365-2214.2011.01247.x>
- Ford, T., Vostanis, P., Meltzer, H., & Goodman, R. (2018). Psychiatric disorder among British children looked after by local authorities: Comparison with children living in private households. *British Journal of Psychiatry, 190*(4), 319–325. <https://doi.org/10.1192/bjp.bp.106.025023>
- Geenen, S., Powers Laurie, E., Powers, J., Cunningham, M., McMahon, L., Nelson, M., Dalton Lawrence, D., Swank, P., & Fullerton, A. (2012). Experimental study of a self-determination intervention for youth in foster care. *Career Development and Transition for Exceptional Individuals, 36*(2), 84–95. <https://doi.org/10.1177/2165143412455431>
- Green, J. M., Biehal, N., Roberts, C., Dixon, J., Kay, C., Parry, E., Rothwell, J., Roby, A., Kapadia, D., Scott, S., et al. (2014). Multidimensional treatment foster care for adolescents in English care: Randomised trial and observational cohort evaluation. *British Journal of Psychiatry, 204*(3), 214–221. <https://doi.org/10.1192/bjp.bp.113.131466>
- Greeson, J. K. P., Garcia, A. R., Tan, F., Chacon, A., & Ortiz, A. J. (2020). Interventions for youth aging out of foster care: A state of the science review. *Children and Youth Services Review, 113*, 105005. <https://doi.org/10.1016/j.chilyouth.2020.105005>
- Guyatt, G. H., Oxman, A. D., Vist, G., Kunz, R., Brozek, J., Alonso-Coello, P., Montori, V., Akl, E. A., Djulbegovic, B., Falck-Ytter, Y., Norris, S. L., Williams, J. W., Jr., Atkins, D., Meerpohl, J., & Schünemann, H. J. (2011). GRADE guidelines: 4. Rating the quality of evidence—Study limitations (risk of bias). *J Clin Epidemiol, 64*(4), 407–415. <https://doi.org/10.1016/j.jclinepi.2010.07.017>
- Haight, W., Black, J., & Sheridan, K. (2010). A mental health intervention for rural, foster children from methamphetamine-involved families: Experimental assessment with qualitative elaboration. *Children & Youth Services Review, 32*(10), 1446–1457. <https://doi.org/10.1016/j.chilyouth.2010.06.024>
- Hambrick, E. P., Oppenheim-Weller, S., N'Zi, A. M., & Taussig, H. N. (2016). Mental health interventions for children in foster care: A systematic review. *Children and Youth Services Review, 70*, 65–77. <https://doi.org/10.1016/j.chilyouth.2016.09.002>
- Hawe, P. (2015). Minimal, negligible and negligent interventions. *Social Science & Medicine, 138*, 265–268.
- Higgins, J. P., Thomas, J., Chandler, J., Cumpston, M., Li, T., Page, M. J., & Welch, V. A. (2019). *Cochrane handbook for systematic reviews of interventions*. John Wiley & Sons.
- Izzo, C. V., Smith, E. G., Holden, M. J., Norton, C. I., Nunno, M. A., & Sellers, D. E. (2016). Intervening at the setting level to prevent behavioral incidents in residential child care: Efficacy of the CARE program model. *Prevention Science: The Official Journal of the Society for Prevention Research, 17*(5), 554–564. <https://doi.org/10.1007/s1121-016-0649-0>
- Jee, S. H., Couderc, J. P., Swanson, D., Gallegos, A., Hilliard, C., Blumkin, A., Cunningham, K., & Heinert, S. (2015). A pilot randomized trial teaching mindfulness-based stress reduction to traumatized youth in foster care. *Complementary Therapies in Clinical Practice, 21*(3), 201–209. <https://doi.org/10.1016/j.ctcp.2015.06.007>
- Job, A. K., Ehrenberg, D., Hilpert, P., Reindl, V., Lohaus, A., Konrad, K., & Heinrichs, N. (2022). Taking Care Triple P for foster parents with young children in foster care: Results of a 1-year randomized trial. *Journal of Interpersonal Violence, 37*(1–2), 322–348. <https://doi.org/10.1177/0886260520909196>
- Kennedy, R. S., Potter, M. H., & Font, S. A. (2022). A meta-regression of racial disparities in wellbeing outcomes during and after foster care. *Trauma, Violence, & Abuse, 24*(4), 2711–2725. <https://doi.org/10.1177/15248380221111481>
- Kerr, L., & Cossar, J. (2014). Attachment interventions with foster and adoptive parents: A systematic review. *Child Abuse Review, 23*(6), 426–439. <https://doi.org/10.1002/car.2313>
- Kirton, D., & Thomas, C. (2011). A suitable case?: Implementing multidimensional treatment foster care in an English local authority. *Adoption & Fostering, 35*(2), 5–17. <https://doi.org/10.1177/030857591103500202>
- Liberati, A., Altman, D. G., Tetzlaff, J., Mulrow, C., Gøtzsche, P. C., Ioannidis, J. P., Clarke, M., Devereaux, P. J., Kleijnen, J., & Moher, D. (2009). The PRISMA statement for reporting systematic reviews and meta-analyses of studies that evaluate healthcare interventions: Explanation and elaboration. *Bmj, 339*, b2700. <https://doi.org/10.1136/bmj.b2700>
- Lipscomb, S. T., Pratt, M. E., Schmitt, S. A., Pears, K. C., & Kim, H. K. (2013). School readiness in children living in non-parental care: Impacts of head start. *Journal of Applied Developmental Psychology, 34*(1), 28–37. <https://doi.org/10.1016/j.appdev.2012.09.001>
- Long, S. J., Evans, R. E., Fletcher, A., Hewitt, G., Murphy, S., Young, H., & Moore, G. F. (2017). Comparison of substance use, subjective well-being and interpersonal relationships among young people in foster care and private households: A cross sectional analysis of the School Health Research Network survey in Wales. *BMJ Open, 7*(2), e014198. <https://doi.org/10.1136/bmjopen-2016-014198>
- Lotty, M., Bantry-White, E., & Dunn-Galvin, A. (2020). The experiences of foster carers and facilitators of Fostering Connections: The Trauma-informed Foster Care Program: A process study. *Children and Youth Services Review, 119*, 105516. <https://doi.org/10.1016/j.chilyouth.2020.105516>
- Luke, N., Sinclair, I., Woolgar, M., & Sebba, J. (2014). *What works in preventing and treating poor mental health in looked after children*. NSPCC.
- Macdonald, S., Trubey, R., Noyes, J., Vinnicombe, S., Morgan, H., Willis, S., Boffey, M., Melendez-Torres, G. J., Robling, M., Wooders, C., & Evans, R. (2023). Mental health and wellbeing interventions for care-experienced children and young people: Systematic review and synthesis of process evaluations. *Children and Youth Services Review, 156*, 107266. <https://doi.org/10.1016/j.chilyouth.2023.107266>
- Marquis, R. (2014). The gender effects of a foster parent-delivered tutoring program on foster children's academic skills and mental health: A randomized field trial. *Dissertation Abstracts International Section A: Humanities and Social Sciences, 75*(1-AE), <http://ovidsp.ovid.com/ovidweb.cgi?T=JS&PAGE=reference&D=psyc11&NEWS=N&AN=2014-99131-196>

- Marsh, D. (2017). *A systematic review and meta-analysis of randomized clinical trials of evidence-based practices through measured change of behavior for children in foster care* (Publication Number Dissertation Abstracts International: Section B: The Sciences and Engineering-Volume 77, Issue 12).
- Mezey, G., Meyer, D., Robinson, F., Bonell, C., Campbell, R., Gillard, S., Jordan, P., Mantovani, N., Wellings, K., & White, S. (2015). Developing and piloting a peer mentoring intervention to reduce teenage pregnancy in looked-after children and care leavers: An exploratory randomised controlled trial. *Health Technology Assessment, 19*(85), 1–139. <https://doi.org/10.3310/hta19850>
- Mezey, G., Robinson, F., Campbell, R., Gillard, S., Macdonald, G., Meyer, D., Bonell, C., & White, S. (2015). Challenges to undertaking randomised trials with looked after children in social care settings. *Trials, 16*(1), 1–15.
- Midgley, N., Besser, S. J., Fearon, P., Wyatt, S., Byford, S., & Wellsted, D. (2019). The Herts and Minds study: Feasibility of a randomised controlled trial of Mentalization-Based Treatment versus usual care to support the wellbeing of children in foster care. *BMC Psychiatry, 19*(1), 1–11. <https://doi.org/10.1186/s12888-019-2196-2>
- Minnis, H., Pelosi, A. J., Knapp, M., & Dunn, J. (2001). Mental health and foster carer training. *Archives of Disease in Childhood, 84*(4), 302–306. <https://doi.org/10.1136/adc.84.4.302>
- Moody, G., Coulman, E., Brookes-Howell, L., Cannings-John, R., Channon, S., Lau, M., Rees, A., Segrott, J., Scourfield, J., & Robling, M. (2020). A pragmatic randomised controlled trial of the fostering changes programme. *Child Abuse & Neglect, 108*, 104646. <https://doi.org/10.1016/j.chiabu.2020.104646>
- Moore, G. F., Evans, R. E., Hawkins, J., Littlecott, H., Melendez-Torres, G. J., Bonell, C., & Murphy, S. (2018). From complex social interventions to interventions in complex social systems: Future directions and unresolved questions for intervention development and evaluation. *Evaluation, 25*(1), 23–45. <https://doi.org/10.1177/1356389018803219>
- Murray, E. T., Lacey, R., Maughan, B., & Sacker, A. (2020). Association of childhood out-of-home care status with all-cause mortality up to 42-years later: Office of National Statistics Longitudinal Study. *BMC Public Health, 20*, 1–10.
- National Institute for Health and Care Excellence. (2021a). *Looked-After Children and Young People: Barriers and facilitators for promoting physical, mental and emotional health and wellbeing of looked-after children and young people and care leavers*.
- National Institute for Health and Care Excellence. (2021b). *Looked-After Children and Young People: Interventions to promote physical, mental, and emotional health and wellbeing of looked-after children, young people and care leavers. NICE guideline. NG205*. Public Health England. <https://www.nice.org.uk/guidance/ng205/resources/lookedafter-children-and-young-people-pdf-66143716414405>
- O'Higgins, A., Ott, E. M., & Shea, M. W. (2018). What is the impact of placement type on educational and health outcomes of unaccompanied refugee minors? A systematic review of the evidence. *Clinical Child and Family Psychology Review, 21*(3), 354–365. <https://doi.org/10.1007/s10567-018-0256-7>
- Price Joseph, M. (2009). KEEP foster-parent training intervention: Model description and effectiveness. *Child and Family Social Work, 14*(2), 233–242.
- Price Joseph, M., Roesch, S., & Burce Cleo, M. (2019). The effects of the KEEP foster parent training intervention on child externalizing and internalizing problems. *Developmental Child Welfare, 1*(1), 5–21.
- Pustejovsky, J. E., & Tipton, E. (2022). Meta-analysis with robust variance estimation: Expanding the range of working models. *Prevention Science, 23*(3), 425–438.
- Reddy Sheethal, D., Negi Lobsang, T., Dodson-Lavelle, B., Ozawa-de Silva, B., Pace Thaddeus, W. W., Cole Steve, P., Raison Charles, L., & Craighead Linda, W. (2013). Cognitive-based compassion training: A promising prevention strategy for at-risk adolescents. *Journal of Child and Family Studies, 22*(2), 219–230. <https://doi.org/10.1007/s10826-012-9571-7>
- Russell, D. H., Trew, S., & Higgins, D. J. (2021). Vulnerable yet forgotten? A systematic review identifying the lack of evidence for effective suicide interventions for young people in contact with child protection systems. *American Journal of Orthopsychiatry, 91*, 647–659. <https://doi.org/10.1037/ort0000555>
- Ryan, R., & Hill, S. (2016). *How to GRADE the quality of the evidence. Version 3.0*.
- Schulz, K. F., Altman, D. G., & Moher, D. (2010). CONSORT 2010 Statement: Updated guidelines for reporting parallel group randomised trials. *Bmj, 340*, c332. <https://doi.org/10.1136/bmj.c332>
- Schuermans Angela, A. T., Nijhof Karin, S., Rutger, C. M. E. E., & Granic, I. (2018). Using a videogame intervention to reduce anxiety and externalizing problems among youths in residential care: An initial randomized controlled trial. *Journal of Psychopathology and Behavioral Assessment, 40*(2), 344–354. <https://doi.org/10.1007/s10862-017-9638-2>
- Seker, S., Boonmann, C., Gerger, H., Jäggi, L., d'Huart, D., Schmeck, K., & Schmid, M. (2021). Mental disorders among adults formerly in out-of-home care: A systematic review and meta-analysis of longitudinal studies. *European Child & Adolescent Psychiatry, 31*(12), 1963–1982. <https://doi.org/10.1007/s00787-021-01828-0>
- Skivington, K., Matthews, L., Simpson, S. A., Craig, P., Baird, J., Blazeby, J. M., Boyd, K. A., Craig, N., French, D. P., & McIntosh, E. (2021). A new framework for developing and evaluating complex interventions: Update of Medical Research Council guidance. *BMJ, 374*, n2061.
- Solomon, D. T., Niec, L. N., & Schoonover, C. E. (2017). The impact of foster parent training on parenting skills and child disruptive behavior. *Child Maltreat, 22*(1), 3–13. <https://doi.org/10.1177/1077559516679514>
- Sprang, G. (2009). The efficacy of a relational treatment for maltreated children and their families. *Child and Adolescent Mental Health, 14*(2), 81–88. <https://doi.org/10.1111/j.1475-3588.2008.00499.x>
- StataCorp. (2023). *Stata Statistical Software: Release 18*. StataCorp LLC.
- Sullivan, A. L., & Simonson, G. R. (2016). A systematic review of school-based social-emotional interventions for refugee and war-traumatized youth. *Review of Educational Research, 86*(2), 503–530.
- Suomi, A., Lucas, N., McArthur, M., Humphreys, C., Dobbins, T., & Taplin, S. (2020). Cluster randomized controlled trial (RCT) to support parental contact for children in out-of-home care. *Child Abuse Negl, 109*, 104708. <https://doi.org/10.1016/j.chiabu.2020.104708>

- Taussig, H. N., & Culhane, S. E. (2010). Impact of a mentoring and skills group program on mental health outcomes for maltreated children in foster care. *Archives of Pediatrics & Adolescent Medicine*, 164(8), 739–746. <https://doi.org/10.1001/archpediatrics.2010.124>
- Taussig, H. N., Weiler, L. M., Garrido, E. F., Rhodes, T., Boat, A., & Fadell, M. (2019). A positive youth development approach to improving mental health outcomes for maltreated children in foster care: Replication and extension of an RCT of the fostering healthy futures program. *American Journal of Community Psychology*, 64(3–4), 405–417. <https://doi.org/10.1002/ajcp.12385>
- UNICEF. (1989). *The United Nations convention on the rights of the child*.

Author Biographies

Rob Trubey is a Research Fellow working at the Centre for Trials Research at Cardiff University. He is a trialist with methodological expertise in conducting systematic reviews of complex health and social care interventions. His research focuses on children and young people's health and wellbeing, with expertise in the use of routine and administrative data.

Rhiannon Evans is a Reader in Social Science and Health at the DECIPHER research centre, Cardiff University. She has methodological expertise in intervention development, adaptation and evaluation. Her substantive research focuses on generating evidence-based interventions to promote the mental health and wellbeing of care-experienced young people, in addition to the prevention of suicide.

Sarah MacDonald is a Research Associate at the DECIPHER research centre, Cardiff University. She has conducted qualitative research with children, young people and families. Her current research focuses on exploring the provision and receipt of mental health services for children and young people, particularly among those with experience of care.

Jane Noyes is Professor of Health and Social Services Research and Child Health. She specializes in complex intervention development and evaluation and qualitative and mixed-methods evidence

synthesis methodology. She is lead convenor of the Cochrane Qualitative and Implementation Methods Group.

Mike Robling is the Director of Population Health Trials at Cardiff University's Centre for Trials Research. His main research interests are in the use of randomized trials and other research designs to evaluate complex interventions to improve the health and wellbeing of patients and the public. He has worked across many different contexts including primary and secondary medical care, community and social care settings.

Simone Willis is a Systematic Reviewer at the Specialist Unit for Review Evidence, Cardiff University and has methodological expertise in evidence reviews in health and social care. Currently, her research focuses on health technology assessments and reviews of interventions for mental health and wellbeing.

Maria Boffey is Network Manager for the School Health Research Network, and provides support for secondary schools, while developing the strategic national and regional partnerships that include Welsh Government, WNHSS Public Health Wales, education consortia and the third sector.

Charlotte Wooders is a Project Manager at The Fostering Network. Part of her work involves the management of fostering stakeholder advisory boards and forums, to ensure co-production is embedded within the work of the organization. She is also responsible for overseeing the delivery of the different work streams for the Fostering Communities program.

Soo Vinnicombe was a Research Officer in the School of Medical and Health Sciences at Bangor University and part of the National Centre for Population Health and Wellbeing Research. Her background is mainly in research and project development and management and she is now involved in strategic projects at Bangor University.

G. J. Melendez-Torres is a Professor of Clinical and Social Epidemiology at Exeter University. He is Deputy Director of the Exeter NIHR Policy Research Program Evidence Reviews Facility and his research program spans health technology assessment, public health aspects of child and adolescent social development and intimate partner violence.