

**Table 1***Participant Demographics*

		<b>Number (% of total sample)</b>
<b>Gender</b>	Male	75 (58.59%)
	Female	52 (40.63%)
	Other	1 (0.78%)
<b>Age</b>	18-24	9 (7.03%)
	25-39	62 (48.44%)
	40-60	48 (37.50%)
	60+	9 (7.03%)
<b>Ethnicity</b>	Caucasian	106 (82.81%)
	Other ethnicity	22 (17.19%)
<b>Civic status</b>	Single	61 (47.66%)
	Married	29 (22.66%)
	Living as a couple	18 (14.06%)
	Divorced or separated	13 (10.16%)
	Widowed	4 (3.13%)
	Other	2 (1.56%)
	Prefer not to say	1(0.78%)
<b>Inpatient status</b>	Current inpatient	27 (21.09%)
	Past inpatient	59(46.1%)
	No inpatient admissions	42(32.81%)
<b>Employment status</b>	Employed	36 (28.13%)
	Self-employed	28 (21.88%)
	Retired	4 (3.13%)
	Unemployed	55 (42.96%)
	Non-paid/volunteer	5 (3.91%)
<b>Education</b>	Postgraduate degree	5 (3.91%)
	College/University completed	59 (46.09%)
	Secondary/High school completed	57 (44.53%)
	Primary school completed	6 (4.69%)
	No formal schooling	1 (0.78%)

**Table 2***Service-types for Participants with Histories of Inpatient Admissions.*

<b>Service type</b>	<b>Number (% of past/current inpatient sample, N=86)</b>
<b>Low/Medium Secure</b>	31 (36.05%)
<b>Acute Mental Health Ward</b>	31 (36.05%)

<b>Psychiatric Intensive Care Unit (PICU)</b>	3 (3.48%)
<b>Rehabilitation and Recovery Services</b>	21 (24.42%)

**Table 3**

*Scoring summaries of each variable*

Measure	Scores	Number (% of total sample)
CORE-10	0-5 Healthy	12 (9.38%)
	>5-10 Low level	24 (18.75%)
	>10-15 Mild	15 (11.72%)
	>15-20 Moderate	24 (18.75%)
	>20-25 Moderate-to-severe	30 (23.44%)
	>25-40 Severe	23 (17.97%)
VASQ	<57	17 (13.28%)
	≥57 Vulnerable attachment style	111 (86.72%)
CRYM	≤ 42 Low	99 (77.34%)
	43-49 Moderate	18 (14.06%)
	50-53 High	0 (0%)
	≥54 Exceptional	11 (8.59%)
RRC-ARM	≤42 Low	76 (59.38%)
	43-49 Moderate	28 (21.88%)
	50-53 High	13 (10.16%)
	≥54 Exceptional	11 (8.59%)
ITQ	No Trauma	87 (67.97%)
	PTSD	9 (7.03%)
	CPTSD	32 (25%)
ACEs	0	0 (0%)
	1	1 (0.78%)
	2-3	5 (3.91%)
	4+	122 (95.31%)

**Table 4**

*Prevalence of ACEs within the sample*

ACE Category	Number (% of total sample)*
Parental Separation Or Divorce	128 (100%)
Emotional Abuse	110 (86%)
Bullying	109 (85%)
Household Member Treated Violently	108 (84%)
Community Violence	106 (83%)
Physical Abuse	101 (79%)

Physical Neglect	77 (60%)
Alcohol or Drug Abuse In Household	65 (51%)
Lived with depressed, suicidal or mentally ill Household Member	65 (51%)
Emotional Neglect	56 (44%)
Sexual Abuse	55 (43%)
Incarcerated Household Member	44 (34%)
Collective Violence	37 (29%)

\*% total more than 100% due to cumulative scoring

**Table 5**

*Hierarchical linear regression analysis to predict psychological distress.*

	Beta	Std.Error	Std.Beta	t	Sig.
Model 1					
ACEs (ACE-IQ)	.754	.282	.232	2.674	.008
Model 2					
ACEs (ACE-IQ)	.121	.224	.037	.539	.591
Attachment (VASQ)	.550	0.57	.664	9.636	<.001

$R^2=0.54$  for model 1 ( $p=.008$ );  $\Delta R^2 = .403$  for model 2 ( $p<.001$ ).

**Table 6**

*Binomial logistic regression predicting likelihood of PTSD or CPTSD diagnosis based on number of ACEs and insecure attachment.*

	Beta	Std.Error	Wald	df	P	Odds Ratio	95% CI for Odds Ratio	
							Lower	Upper
Attachment	.134	.030	19.438	1	<.001	1.143	1.077	1.213
ACEs	.208	.095	4.791	1	.029	1.231	1.022	1.483
Constant	11.937	2.308	26.749	1	<.001	.000		

**Table 7**

*Regression model predicting psychological distress based on childhood and adult resilience.*

	Beta	Std.Error	Std.Beta	t	Sig.
Model 1					
Childhood resilience (CYRM)	-.313	.064	-.399	-4.879	<.001

Model 2					
Constant	38.345	2.543		15.081	<.001
Adult resilience (RRC-ARM)	-.467	.072	-.550	-6.464	<.001

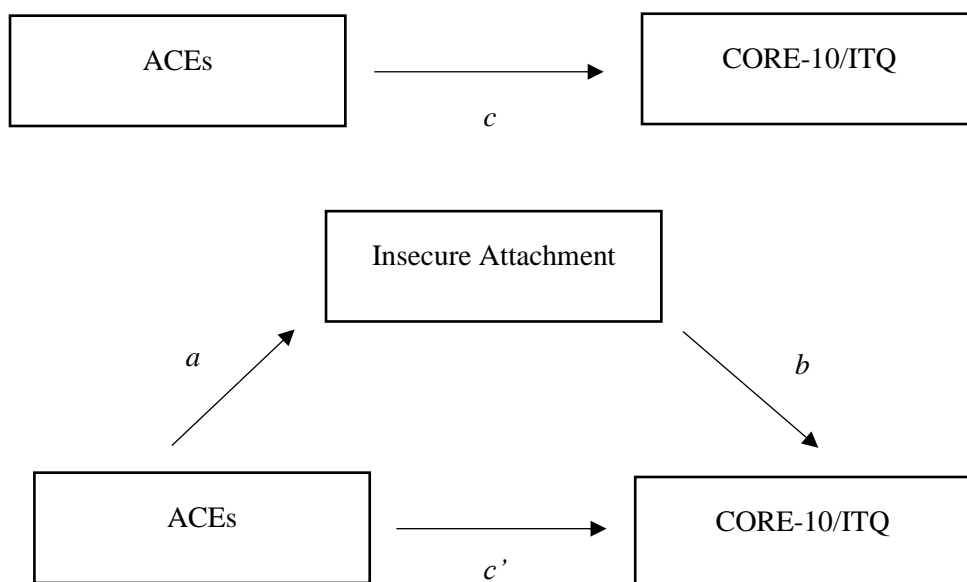
**Table 8**

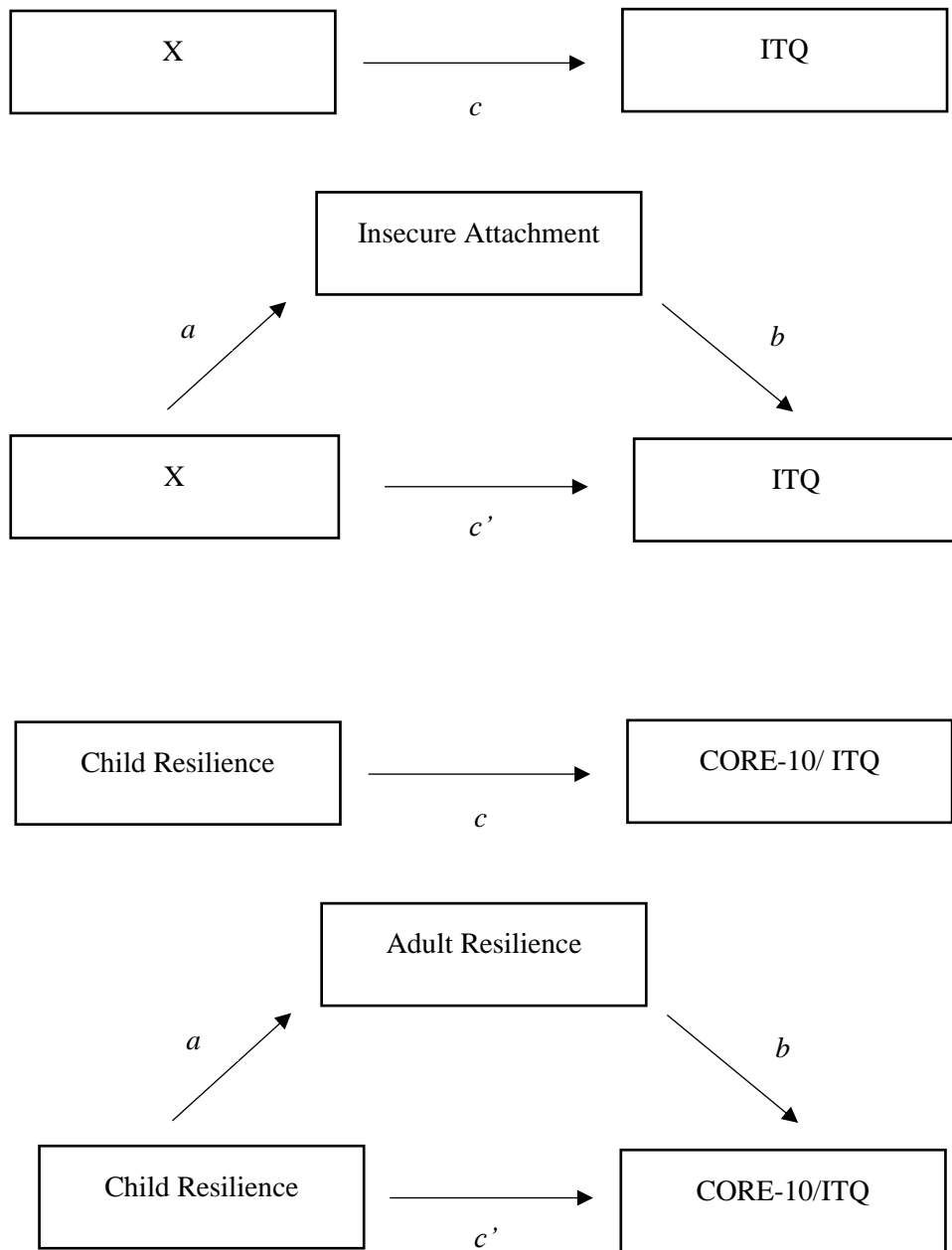
*Logistic regression predicting likelihood of PTSD or CPTSD diagnosis based on levels of childhood and adult resilience.*

	Beta	Std.Error	Wald	df	P	Odds Ratio	95% CI for Odds Ratio	
							Lower	Upper
Childhood resilience	-.042	.024	3.051	1	.081	.959	.914	1.005
Adult resilience	-.071	.025	8.016	1	.005	.931	.887	.978
Constant	3.270	.948	11.901	1	<.001	26.304		

**Figure 1**

*Hypothesised Mediation Models*





**Table 9**

*Final regression model predicting psychological distress based on attachment and adult resilience.*

	Beta	Std.Error	Std.Beta	t	Sig.
Model 1					
Attachment (VASQ)	.559	.054	.675	10.272	<.001
Model 2					
Constant	1.580	4.354		.363	.717
Attachment (VASQ)	.444	.048	.536	9.176	<.001

Adult Resilience (RRC-ARM)	-.364	.050	-.428	-7.334	<.001
----------------------------	-------	------	-------	--------	-------

$R^2=0.456$  for model 1 ( $p<.001$ );  $\Delta R^2 = .164$  for model 2 ( $p<.001$ ).

**Table 10**

*Mediation path coefficients: Attachment, ACE scores and Psychological Distress.*

	B (SE)	CI	t	p
Path a: Attachment- ACE scores	1.15 (.33)	(.49, 1.81)	3.44	<.001
Path b: Attachment	.55 (.06)	(.44, .66)	9.63	<.001
Path c: ACEs total	.75 (.28)	(.20, 1.31)	2.67	.009
Path c': ACEs direct	.12 (.22)	(-.32, .56)	.54	.591
ACEs indirect	.63 (.23)	(.20, 1.10)	n/a	n/a

**Table 11**

*Mediation path coefficients: Adult resilience, Child resilience and Psychological Distress.*

	B (SE)	CI	t	p
Path a: Adult resilience- Child resilience	.51 (.07)	(.44, .75)	7.40	<.001
Path b: Adult resilience	-.47 (.07)	(-.61, -.32)	-6.46	<.001
Path c: Child resilience total	-.31 (.06)	(-.44, -.18)	-4.89	<.001
Path c': Child resilience direct	-.07 (.07)	(-.21, .06)	-1.13	.262
Child resilience indirect	-.24 (.05)	(-.34, -.15)	n/a	n/a