

# Exploring the challenges experienced by Intensive Care Unit (ICU) nurses during the organ donation process – a scoping review

Nelson R K Selvaraj, Lecturer (Adult Nursing)

---

## Supervisors

Dr. Jessica Baillie, Senior Lecturer (Adult Nursing), Cardiff University

Dr. Deborah Edwards, Senior Research Fellow, Cardiff University



Building Research Capacity for Nursing &  
Allied Health Professionals and Pharmacists  
Cynyddu Gwaith Ymchwil ar gyfer Nyrsio a  
Gweithwyr Proffesiynol Cysylltiedig a Fferylwyr



- Complex care process
- Decision making process for donors' families can be extremely stressful.
- Presence of nurses when families are approached about the organ donation process may ease families' grief and thus facilitate the donor process.
- It's a challenging prospect for many ICU nurses, however.

(Emilie et al, 2022;  
Holthe and Husby, 2023)

# Why

---

# AIMS

---

- To explore the challenges experienced by ICU nurses during the organ donation process.
- To identify support models or strategies that may support ICU nurses when caring for potential organ donors and their families during the organ donation process.

# Methodology

---

Joanna Briggs Institute (JBI) methodology for scoping reviews & Preferred Reporting Items for Systematic Reviews and Meta-Analyses extension for Scoping Reviews (PRISMA-ScR) (Peters et al, 2020)

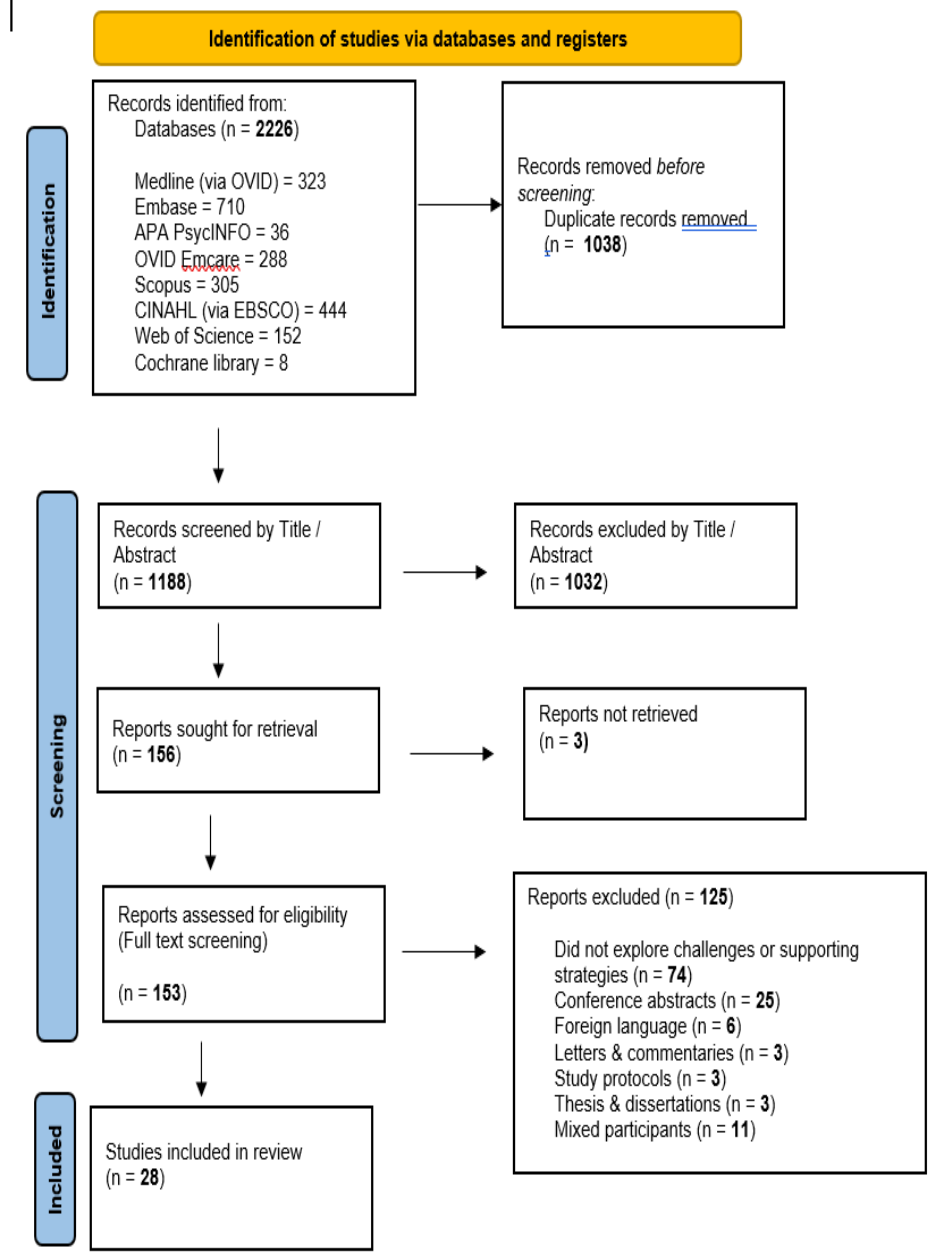
Cochrane library, MEDLINE (via Ovid), Embase, APA PsycINFO, Scopus, OVID Emcare, Web of Science and CINAHL (via EBSCO).

No date restrictions

28 studies

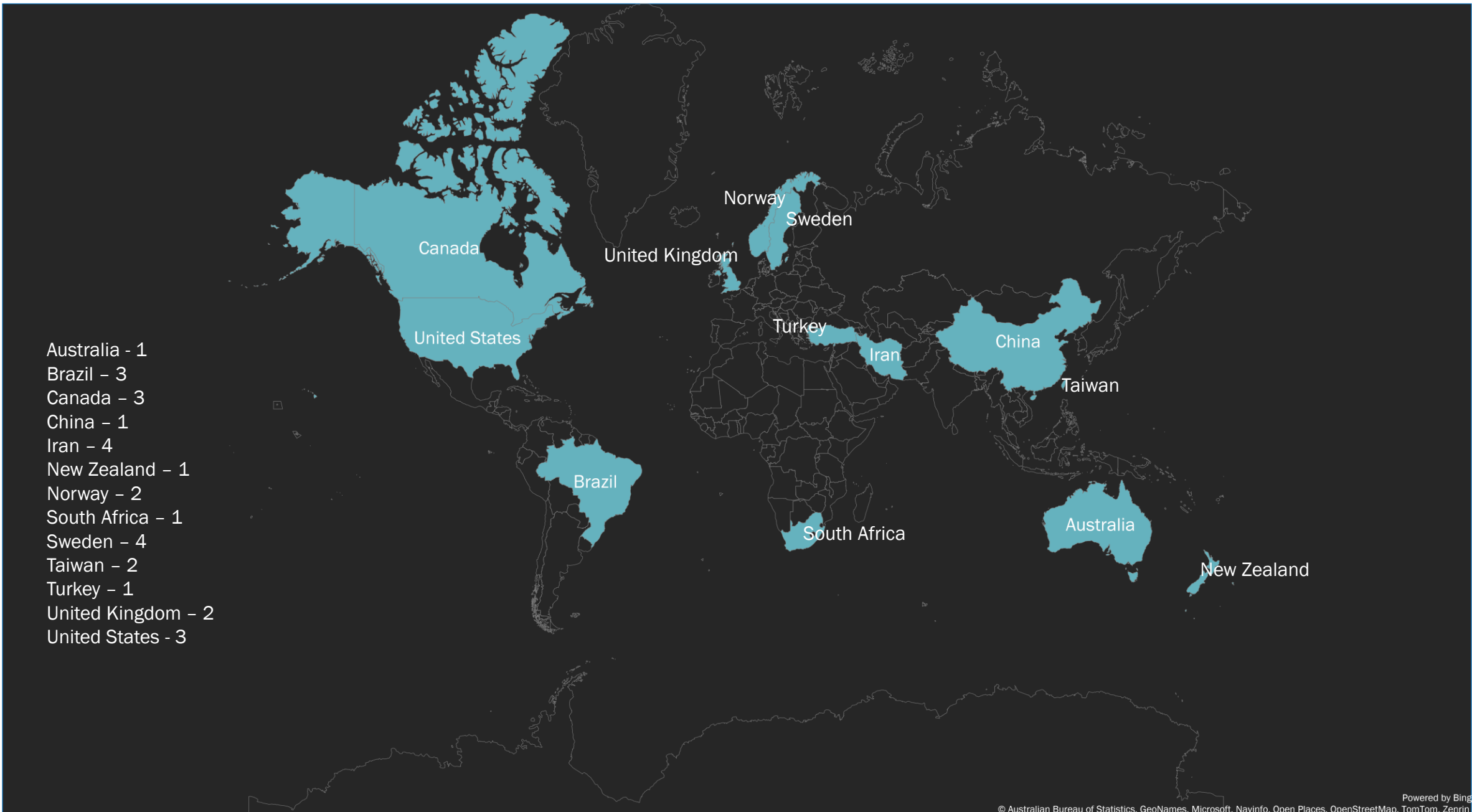
Results will be presented according to the concepts of interest, using tables, figures and supporting narrative summary





# PROTOCOL





- Australia - 1
- Brazil - 3
- Canada - 3
- China - 1
- Iran - 4
- New Zealand - 1
- Norway - 2
- South Africa - 1
- Sweden - 4
- Taiwan - 2
- Turkey - 1
- United Kingdom - 2
- United States - 3

# Preliminary Findings



## Challenges\*

---

Direct patient care<sup>(1,2, 4-18)</sup>

Care for the next of kin<sup>(1, 2, 4, 7-9, 11, 13, 15, 18-21)</sup>

Concept of brainstem death<sup>(2, 4, 6, 11, 16, 18, 22, 23)</sup>

Ethical challenges<sup>(2, 6)</sup>

Emotional challenges<sup>(1, 10, 12, 14, 15, 21, 23, 24)</sup>

Communication<sup>(7, 13, 25)</sup>

Organisational challenges<sup>(1, 11, 20, 25)</sup>

## Support Models & Strategies\*

Debriefing<sup>(1, 2, 13, 15, 17, 19, 24, 25)</sup>

Training and education<sup>(1, 2, 8, 10, 12, 13, 15-18, 26-29)</sup>

Policies and guidelines<sup>(1, 13, 15-17, 20-25)</sup>

Support from organisation<sup>(1, 2, 5-7, 12, 13, 15-18, 20, 24, 25)</sup>

Psychological coping mechanisms<sup>(12, 16)</sup>

\* Full reference list can be found at the end

# Conclusion

---

- Challenges are many.
- Improved understanding of the nature of challenges can facilitate the implementation of supportive strategies which will ultimately improve the quality of care, consent rates and the overall experience of nurses and donors' families.



# References

---

1. Emilie G, Birgitta B, Gunilla B, Lisbeth F, Janet M, Margareta W et al. Intensive Care Nurses' Experience of Caring during the Organ Donor Process in Sweden – a Qualitative Study. *International Journal of Caring Sciences*. 2022; 15(2), 720-726.
2. Holthe E, Husby VS. Barriers to Organ Donation: A Qualitative Study of Intensive Care Nurses' Experiences. *Dimens Crit Care Nurs*. 2023; 42(5), 277-285.
3. Peters MDJ, Marnie C, Tricco AC, Pollock D, Munn Z, Alexander L et al. Updated methodological guidance for the conduct of scoping reviews. *JB I Evid Synth*. 2020; 18(10), 2119–2126.

**Full reference list here**





# Thank you

Nelson R K Selvaraj, Lecturer (Adult Nursing)  
Dr. Jessica Baillie, Senior lecturer (Adult Nursing)  
Dr. Deborah Edwards, Senior Research Fellow  
Jonathan Jones (Subject Librarian)



[SelvarajN1@cardiff.ac.uk](mailto:SelvarajN1@cardiff.ac.uk)



@NRKSelvaraj

