

Aspergillus PCR: One Step Closer to Standardization

P. Lewis White, Stéphane Bretagne, Lena Klingspor, Willem J. G. Melchers, Elaine McCulloch, Bettina Schulz, Niklas Finnstrom, Carlo Mengoli, Rosemary A. Barnes, J. Peter Donnelly and Juergen Loeffler
J. Clin. Microbiol. 2010, 48(4):1231. DOI:
10.1128/JCM.01767-09.
Published Ahead of Print 10 February 2010.

Updated information and services can be found at:
<http://jcm.asm.org/content/48/4/1231>

	<i>These include:</i>
REFERENCES	This article cites 26 articles, 16 of which can be accessed free at: http://jcm.asm.org/content/48/4/1231#ref-list-1
CONTENT ALERTS	Receive: RSS Feeds, eTOCs, free email alerts (when new articles cite this article), more»

Information about commercial reprint orders: <http://journals.asm.org/site/misc/reprints.xhtml>
To subscribe to to another ASM Journal go to: <http://journals.asm.org/site/subscriptions/>

Aspergillus PCR: One Step Closer to Standardization^{∇†}

P. Lewis White,^{1*} Stéphane Bretagne,² Lena Klingspor,³ Willem J. G. Melchers,⁴ Elaine McCulloch,⁵ Bettina Schulz,⁶ Niklas Finnstrom,⁷ Carlo Mengoli,⁸ Rosemary A. Barnes,⁹ J. Peter Donnelly,⁴ and Juergen Loeffler¹⁰ on behalf of the European *Aspergillus* PCR Initiative

NPHS Microbiology, Cardiff, United Kingdom¹; Henri Mondor Hospital, Créteil, France²; Karolinska University Hospital, Stockholm, Sweden³; Radboud University Nijmegen Medical Centre, Nijmegen, Netherlands⁴; Royal Hospital for Sick Children, Glasgow, United Kingdom⁵; Charite Hospital, Berlin, Germany⁶; Cepheid AB, Toulouse, France⁷; University of Padua, Padua, Italy⁸; Cardiff University, UHW, Cardiff, United Kingdom⁹; and Wuerzburg University, Wuerzburg, Germany¹⁰

Received 8 September 2009/Returned for modification 6 November 2009/Accepted 4 February 2010

PCR has been used as an aid in the diagnosis of invasive aspergillosis for almost 2 decades. A lack of standardization has limited both its acceptance as a diagnostic tool and multicenter clinical evaluations, preventing its inclusion in disease-defining criteria. In 2006, the European *Aspergillus* PCR Initiative was formed. The aim of the initiative was to provide optimal standardized protocols for the widespread clinical evaluation of the *Aspergillus* PCR to determine its diagnostic role and allow inclusion in disease diagnosis criteria. Quality control panels were developed and circulated to centers for evaluation of the existing methodology before recommendations based on the initial results were proposed for further panels. The centers were anonymously classified as “compliant” or “noncompliant,” according to whether they had followed the proposed recommendations before the performance parameters were determined and meta-regression analysis was performed. Most PCR amplification systems provided similar detection thresholds, although positivity was a function of the fungal burden. When PCR amplification was combined with DNA extraction, 50% of the centers failed to achieve the same level of detection. Meta-regression analysis showed positive correlations between sensitivity and extraction protocols incorporating the proposed recommendations and the use of bead beating, white cell lysis buffer, and an internal control PCR. The use of elution volumes above 100 μ l showed a negative correlation with sensitivity. The efficiency of the *Aspergillus* PCR is limited by the extraction procedure and not by PCR amplification. For PCR testing of whole blood, it is essential that large blood volumes (≥ 3 ml) be efficiently lysed before bead beating to disrupt the fungal cell and performance of an internal control PCR to exclude false negativity. DNA should be eluted in volumes of <100 μ l.

Despite the improved awareness of, and ability to diagnose, invasive aspergillosis (IA), definitive diagnosis of IA remains challenging. Clinical signs may be no more specific than fever of unknown origin refractory to treatment with broad-spectrum antibiotics, and classical mycology is seldom useful. With more people surviving protracted bouts of immunosuppression as a result of chemotherapy or preparation for stem cell transplantation, the incidence of disease will continue to rise. Mortality rates are high, approaching 100% for cerebral disease, but they can be reduced by the early initiation of antifungal therapy (14, 24). However, without an accurate diagnosis, clinicians frequently resort to empirical antifungal therapy, exposing patients to unnecessary treatment and its associated toxicity and side effects.

Health care providers also incur extra costs, with the annual cost of treating fungal infections in Europe running into millions of euros (26). Moreover, patients diagnosed with IA often require extended hospital care, leading to supplementary costs

estimated to be 75,000 euros per patient, underlining the medical and socioeconomic importance of IA (26).

The introduction of nonculture techniques has enhanced the ability to diagnose IA in patients at high risk. In neutropenic patients, pulmonary abnormalities consistent with IA, such as nodules often surrounded by a “halo sign,” can be detected by high-resolution computed tomography (8). However, the halo sign is transient and is detectable only during early IA, after which radiological signs become nonspecific or appear too late to be therapeutically useful (3). Commercially available tests for the detection of galactomannan antigen and beta-D-glucan show variable performance characteristics and are influenced by the prevalence of the disease, the testing strategy used, age, the underlying condition, concomitant therapy with certain antimicrobials, and even food consumption (10, 19, 21, 27).

The successful PCR-aided diagnosis of IA has been reported in many publications (29). However, the widespread acceptance of the PCR diagnosis of IA has been hindered by a lack of standardization, compounded by limited knowledge of the disease process. A multicenter evaluation is required to overcome the statistical bias introduced by the relatively low frequency of IA, which is often 10% or less in high-risk populations. Paradoxically, it is unlikely that an appropriate evaluation will be achieved until a standard for PCR is agreed upon.

In 2006, a publication describing the design and clinical

* Corresponding author. Mailing address: NPHS Microbiology Cardiff, University Hospital of Wales, Heath Park, Cardiff CF14 4XN, United Kingdom. Phone: 029 2074 6581. Fax: 029 2074 2161. E-mail: lewis.white@nphs.wales.nhs.uk.

[∇] Published ahead of print on 10 February 2010.

[†] The authors have paid a fee to allow immediate free access to this article.

evaluation of an *Aspergillus* PCR technique was accompanied by an editorial highlighting the fact that even though a PCR for the detection of *Aspergillus* in human specimens has existed for almost 2 decades, the technique was not included in the European Organization for Research and Treatment of Cancer and the Mycoses Study Group (EORTC/MSG) consensus definitions for the diagnosis of invasive fungal diseases (IFDs) because of a lack of standardization (1, 4, 5, 31). Later that year, the United Kingdom Fungal PCR Consensus Group published an agreed-upon methodology for the PCR-aided diagnosis of IA within the United Kingdom and Ireland (30). Those reports galvanized a group of mainly European experts into forming the European *Aspergillus* PCR Initiative (EAPCRI) working group of the International Society for Human and Animal Mycoses (ISHAM), which involved more than 60 centers across Europe and which included centers in Australia and the Middle East. EAPCRI agreed to collaborate to develop a standard for an *Aspergillus* PCR methodology and to validate this in clinical trials so that PCR could be incorporated into future consensus definitions for the diagnosis of IFDs. EAPCRI consists of laboratory, clinical, and statistical working groups and a steering committee charged with focusing the overall direction of the group, providing a link between the working parties, and also raising the necessary funds (www.eapcri.eu).

Here we report on the process, findings, and methodological recommendations of the EAPCRI Laboratory Working Party (LWP) for a PCR used to test blood. The preferred function of the PCR was as a screening test rather than a confirmatory test. The aim was to ensure the highest sensitivity to attain the maximum negative predictive value, as this has been the most pressing issue in clinical practice, and to obtain an assay suited to the diagnosis of diseases with relatively low incidence rates.

MATERIALS AND METHODS

As the study described here was primarily an analytical validation of the *Aspergillus* PCR, the study followed the guidelines of the Standards for Reporting of Diagnostic Accuracy, where applicable (2). A summary of the EAPCRI laboratory standardization process is shown in Fig. 1.

Participants. LWP comprised a core group of 8 laboratories and an extended group of an additional 16 laboratories. The centers had both clinical and scientific expertise in the field. All centers were designated by a numerical code, which allowing unbiased assessment of the results by the core group and the maintenance of impartiality throughout the analytical process.

Specimens. The literature supports the use of EDTA-anticoagulated whole blood (WB), serum, and bronchoalveolar lavage (BAL) fluid (29). For the initial laboratory standardization (quality control [QC]), WB was selected as the target specimen, as it can be obtained by relatively noninvasive means, and large WB specimen volumes from all adult patients may be used for high-frequency screening. WB is a clinical sample whose use is more technically demanding and methodologically diverse than serum, and its use requires greater assay standardization. WB was obtained from healthy volunteers, and the samples were pooled.

Panels. For the QC panels, 3-ml WB aliquots were provided and represented the midpoint volumes used in studies described in the literature. All WB material was tested for the presence of contaminating *Aspergillus* spp. before it was processed (30, 31). To avoid airborne contamination, the processing of all material took place in a category 2 laminar-flow hood. The QC panels were spiked with *Aspergillus fumigatus* conidia (strain ATCC 1022) quantified by use of a Fuchs-Rosenthal counting chamber. Negative controls consisting of fungus-free blood were included. Two WB panels were distributed in 2007 and 2008, respectively (Fig. 1).

To determine whether DNA extraction or PCR amplification was rate limiting, an additional DNA panel focusing solely on the performance of PCR amplification was also distributed alongside the WB panel distributed in 2007 (Fig. 1). DNA was extracted from 10^6 *A. fumigatus* conidia before it was serially diluted.

The expediency of the panel was tested by an *Aspergillus*-specific real-time PCR (30, 31). The acceptable threshold for the PCR performance panel was determined, and the DNA concentration in the specimen was equivalent to approximately 50 *A. fumigatus* conidia eluted in 100 μ l or 27 rRNA gene copies per μ l eluate, when the mean number of copies of the rRNA genes is considered to be 54 per *A. fumigatus* genome (9). The mean cycle threshold (C_T) value was 35.3 cycles (upper limit, 38.8 cycles) and corresponded to the typical C_T values obtained by the core group when WB from patients with proven/probable IA was tested. It was essential that all PCR methods evaluated be able to attain this level of detection. PCR methods not performing to this standard were considered suboptimal. Additional dilution factors were included to identify methods with enhanced PCR performance (EPCR). Negative controls consisting of molecular-grade water were included.

The QC panels were designed to determine the detection limit and concentrated on clinically relevant low fungal burdens, with between 70 and 80% of the specimens in each WB panel being spiked with less than 100 conidia per specimen. To validate the panels, initial blind testing was performed by the core group ($n = 8$) before distribution of the panels and blind testing by all centers ($n = 24$). After the panels were developed, the distributing center froze all panels at -80°C for up to 1 week with no freeze-thaw intervals. The panels were circulated on dry ice for next-day delivery by courier. The receiving centers were asked to confirm receipt of the panel, comment on the state of the panel (frozen or thawed), and keep the specimens frozen at -80°C until they were tested. Any panels that were received thawed would be noted and the results would be excluded from further analysis. A control panel was kept by the distributing center and was tested for validity on confirmation of the receipt of the panels from all receiving centers.

DNA extraction. For the 2007 WB panel, the distribution centers were encouraged to use the existing methodology. This typically involved the lysis of human blood cells prior to enzymatic or mechanical fungal cell lysis and then DNA purification and precipitation with a commercial kit. Following analysis of the first distribution panel, extraction recommendations (process the entire 3-ml specimen and use bead beating for fungal cell lysis) that all centers were encouraged to incorporate into their existing methods for testing of the 2008 WB panel were proposed.

PCR amplification. Because there was no universally standardized PCR method, the participating centers were told to use their current amplification systems. For all panels, it was recommended that the DNA extracts be tested in duplicate and preferably in triplicate. The use of an internal control PCR was a prerequisite. It was decided that the use of nested PCR assays should be avoided, as these were considered too prone to producing false-positive results.

Defining compliance. When the specimens in the 2008 WB panel were tested, the centers were graded as "compliant" or "noncompliant," depending on whether they had followed the proposed recommendations: to use the entire specimen provided, use bead beating to lyse the fungal cells, use an internal control PCR to avoid false-negative results, and perform PCR analysis at least in duplicate.

Data analysis. The centers were requested to return their results within a designated time frame and provide detailed protocols for their DNA extraction and PCR amplification systems. For the 2008 WB panel distribution, for which methodological recommendations had been proposed, the core group, blinded to the individual assay performance and center identity, scrutinized the procedures for compliance. The various protocols used for the 2008 panel are summarized in Tables 1 and 2. A data analysis subgroup was elected to confirm the classifications and to determine covariates for blinded statistical analysis by an independent party.

Statistical analysis. The data produced by the responding centers were qualitative and quantitative. Qualitative data were coded as true positive (positive PCR result obtained with blood spiked with *Aspergillus* conidia), false positive (positive PCR result obtained with blood that did not contain *Aspergillus* conidia), true negative (negative PCR result obtained with blood that did not contain *Aspergillus* conidia), and false negative (negative PCR result obtained with blood spiked with *Aspergillus* conidia). The diagnostic odds ratio (DOR), sensitivity, and specificity were calculated. For the evaluation of the diagnostic accuracy indices, the specimen with 10 conidia per 3 ml was excluded due to the possible influence of burden variability between replicates. The sensitivity, specificity, and DOR were also transformed to their logits in order to obtain a normal distribution of values. In order to manage the heterogeneity arising from the different centers (random effects), the effects exerted by several categorical (binary) covariates on sensitivity, specificity, and DOR were evaluated by meta-regression methods. The covariates are shown in Table 3. The random-effects inverse variance weighting method was used for calculations related to meta-analytic pooling and meta-regression (25).

Linear regression analysis was performed for the centers providing C_T values.

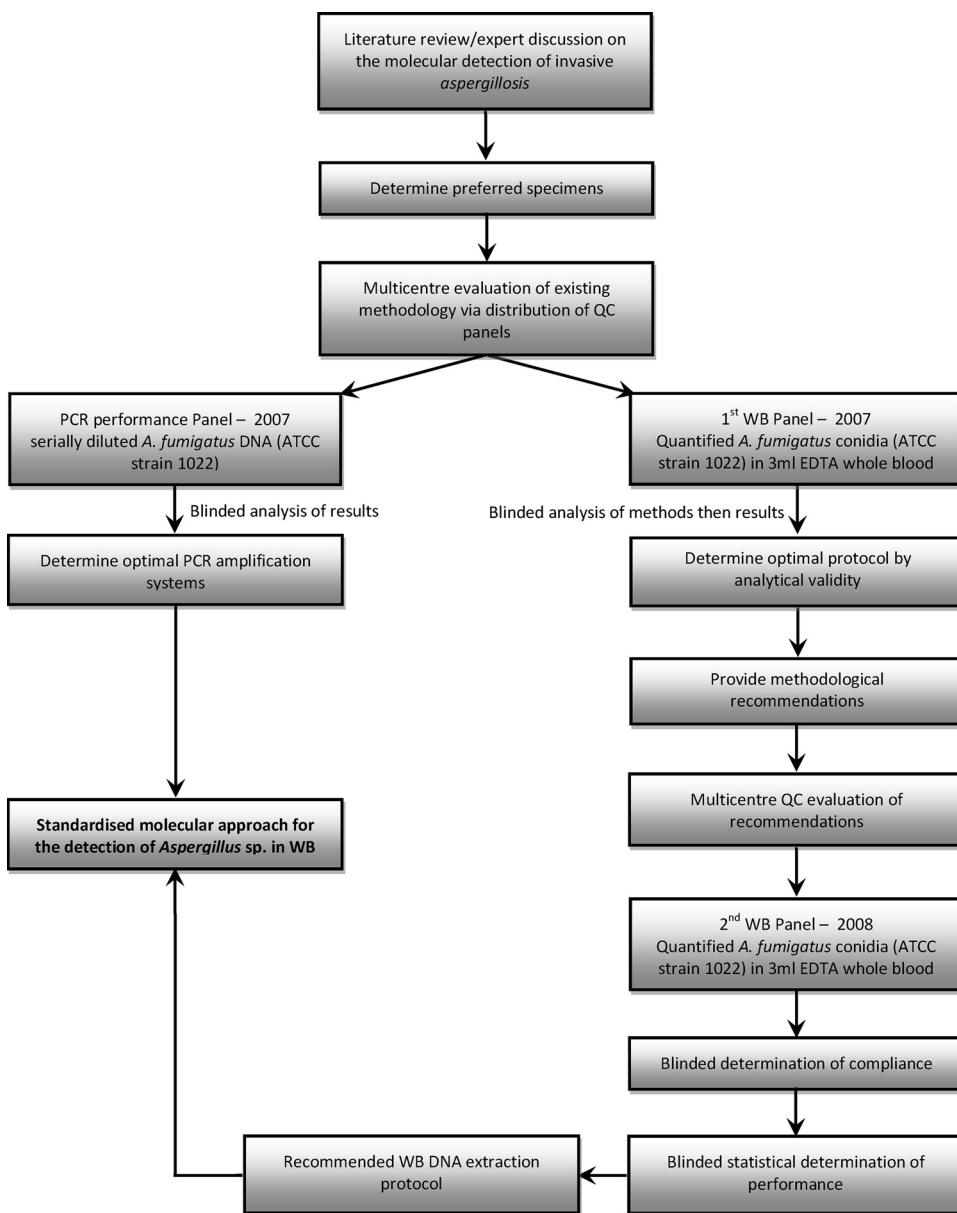


FIG. 1. Summary of the EAPCRI *Aspergillus* PCR standardization process.

The relationship between this quantitative outcome and the number of *Aspergillus* conidia/3 ml was investigated by use of a mixed-effects restricted-maximum-likelihood regression procedure to take into account the heterogeneity at the center level.

The efficiency of the PCR was calculated by using the equation $-1 + 10^{(-1/\text{slope})}$.

RESULTS

The panels were distributed to a total of 24 centers on two separate occasions (in 2007 and 2008). Of these centers, 83.3%, 91.7%, and 87.5% returned results within the allocated time frame for the PCR performance panel, the 2007 WB panel, and the 2008 WB panel, respectively.

Determination of *Aspergillus* PCR performance. Of the 24 centers receiving the panels, 23 actively tested the PCR per-

formance panel, although 2 centers were unable to return results due to technical difficulties and an additional center experienced distribution delays. Eighteen of the 20 centers achieved the required detection limit of approximately 27 rRNA copies/ μ l eluate and used 11 different PCR protocols (Table 2). Nine of the 18 centers using seven different PCR protocols showed EPCR and consistently detected lower fungal burdens equivalent to 5 *A. fumigatus* conidia at a concentration of 2.7 rRNA copies/ μ l eluate (Table 2). There was no statistically significant difference between the mean PCR efficiency for the different platforms used. The specificity of the PCR methods tested was 95.2%.

The impact of DNA extraction on PCR performance. Centers meeting the required PCR performance threshold should achieve a similar performance when they test spiked WB, pro-

TABLE 1. Summary of methods used to test the 2008 EAPCRI WB panel^a

Center	Vol (ml) used	RCL	WCL	Fungal lysis	Method of fungal DNA purification	DNA strategy	Internal control PCR	No. of replicates	Compliant	PCR strategy
2	3	Yes	Yes	B. beating	QIAamp Blood kit (Qiagen)	DNA 1	No	3	No	PCR 1
3	3	Yes	No	B. beating	MagNA Pure LC Total NA kit (Roche)	DNA 2	Yes	3	Yes	PCR 2
4	1–2	Yes	No	Lyticase	Phenol-chloroform	DNA 3	Yes	1	No	PCR 3
5	3	Yes	Yes	Lyticase	DNAeasy Tissue (Qiagen)	DNA 4	No	3	No	PCR 4
6	3	Yes	No	B. beating	MagNA Pure LC DNA kit I (Roche)	DNA 5	No	3	No	PCR 5
7	3	Yes	No	B. beating	ZR Fungal/Bacterial DNA kit (Zymo research)	DNA 6	Yes	3	Yes	PCR 6
8	1.5	Yes	No	B. beating	SeptiFast kit (Roche)	DNA 7	Yes	3	No	PCR 7
9	3	Yes	Yes	B. beating	SeptiFast kit (Roche)	DNA 8	Yes	3	Yes	PCR 7
10	3	Yes	Yes	B. beating	MagNA Pure LC Total NA kit (Roche)	DNA 9	Yes	3	Yes	PCR 1
11	3	Yes	Yes	B. beating	Tissue kit, EZ1 (Qiagen)	DNA 10	Yes	3	Yes	PCR 8
13	3	Yes	Yes	B. beating	High Pure Template PCR kit (Roche)	DNA 11	Yes	3	Yes	PCR 1
14	3	Yes	Yes	B. beating	SeptiFast kit (Roche)	DNA 8	Yes	3	Yes	PCR 9
15	3	No	No	B. beating	QIAamp blood kit (Qiagen)	DNA 12	Yes	3	Yes	PCR 1
16^b	3	ND	ND	B. beating	QIAamp DNA minikit (Qiagen)	DNA 13	Yes	3	Yes	PCR 10
17	3	Yes	Yes	Lyticase	DNA Lego kit (Top Bio)	DNA 14	No	3	No	PCR 11
18	3	Yes	No	B. beating	MagNA Pure LC DNA kit I (Roche)	DNA 5	No	3	No	PCR 5
19	3	Yes	Yes	B. beating	GeneXpert (Cepheid)	DNA 15	Yes	3	Yes	PCR 12
20	3	Yes	Yes	B. beating	High Pure Template PCR kit (Roche)	DNA 11	Yes	1	No	PCR 2
21	2	Yes	No	B. beating	SeptiFast kit (Roche)	DNA 7	Yes	3	No	PCR 1
22	3	Yes	Yes	B. beating	High Pure Template PCR kit (Roche)	DNA 11	Yes	3	Yes	PCR 13
23	3	Yes	Yes	B. beating	bioMérieux MiniMag^c	DNA 16	Yes	3	Yes	PCR 1

^a The results for the centers that used methods that attained the detection threshold are indicated in boldface. These included 11 compliant centers and 3 noncompliant centers. Eleven different DNA extraction techniques were used together with nine different PCR protocols by the 14 centers attaining the threshold, 9 of which were compliant; 8 attained the PCR performance threshold, and 5 achieved enhanced PCR performance. No results were received from centers 1 and 12, whereas logistical limitations prohibited the participation of center 24. Abbreviations: RCL, red cell lysis; WCL, white cell lysis; B. beating, bead beating; ND, not disclosed.

^b The specificity of the assay was poor (11.1%).

^c For the extraction reagents, any possible contaminating DNA sources were removed by magnetic silica treatment.

vided an efficient DNA extraction method is used. The WB threshold was 50 conidia loaded into a 3-ml specimen. The use of any PCR system coupled with an inefficient extraction system would fail to achieve these standards.

The 2007 WB panel. Nine of the 22 centers returning results for the 2007 WB panel achieved the required WB detection threshold. All nine centers achieved the prerequisite PCR performance threshold using seven different PCR protocols (PCRs 1, 3, 5, 6, 7, 9, and 13), and six centers had EPCR for the detection of lower fungal burdens by the use of five PCR protocols (PCRs 1, 5, 6, 7, and 13). Eight of the nine centers, including all six centers with EPCR, used the entire WB specimen for extraction, and the other center used 75% of the blood supplied. Eight of the nine centers, including all six centers with EPCR, used bead beating to disrupt the fungal cell. One center used lyticase to remove the fungal wall. Two additional centers that did not reach the WB extraction threshold also used the entire specimen and lyticase. Six centers that failed to reach the required WB threshold disrupted the fungal cell with bead-beating-based methods but did not use the entire specimen. Three centers that failed to reach the WB threshold did not use a recognized fungal cell lysis step. One center had major contamination issues (specificity, 0%), raising doubt as to the significance of the results, and another center experienced distribution delays. Eight of the 11 centers that failed to achieve the WB threshold achieved the prerequisite PCR performance threshold and three centers had EPCR, indicating the importance of the use of an efficient DNA extraction technique.

These findings formed the basis for the DNA extraction recommendations for testing of the 2008 WB panel. By conventional meta-analytical pooling, the overall sensitivity for the first WB panel was 64.5% (95% confidence interval [CI], 49.0 to 77.5%) and the overall specificity was 89.6% (95% CI 79.1 to 95.2%). The DOR was 15.1 (95% CI, 4.4 to 52.2).

The 2008 WB panel. Twelve compliant centers followed the recommendations when they tested the 2008 panel, whereas nine centers did not and, consequently, were deemed noncompliant (Table 1). The number of centers achieving the required WB detection threshold was 14, and those centers used nine different PCR protocols (Table 1). Twelve of the 14 centers reaching the WB threshold used the entire specimen, and all used bead beating to lyse the fungal cell. Eleven of these 14 centers were classified as compliant. Twelve of the 14 centers (9/11 compliant centers) attaining the WB threshold were also capable of detecting the lower fungal burdens by using seven different PCR protocols (PCRs 1, 2, 6, 7, 10, 12, and 13). However, one compliant center had major contamination problems (specificity, 11.1%). Of the seven centers that failed to reach the required threshold, six centers were noncompliant and one center was compliant.

The overall sensitivity was statistically significantly greater for the second WB panel and the specificity was not compromised, resulting in an improved DOR. By conventional meta-analytical pooling, an overall sensitivity of 80.60% (95% CI, 68.20 to 88.94%), a specificity of 86.29% (95% CI, 76.06 to 92.58%), and a DOR of 39.79 (95% CI, 12.44 to 127.33) were calculated (Table 4). The mean positivity rate was a function of

TABLE 2. Details of the PCR systems and performance by testing of the PCR performance panel^a

Center	PCR format	Platform	Gene target	Detection threshold (no. of copies/ μ l) ^b	PCR strategy
1	RT hydrolysis (TaqMan) probe	Rotorgene	28S gene	27	PCR 1
2	RT hydrolysis (TaqMan) probe	LightCycler	28S gene	2.7	PCR 1
3	RT hydrolysis (TaqMan) probe	TaqMan	18S gene	0.27	PCR 2
4	Nested PCR	Conventional	18S gene	27	PCR 3
5	RT hybridization (FRET) probes	LightCycler	18S gene	No positive results	PCR 4 ^c
6	RT hybridization (FRET) probes	LightCycler	18S gene	27	PCR 5 ^c
7	RT hydrolysis (TaqMan) probe	Rotorgene	ITS2 gene	2.7	PCR 6
8	RT hybridization (FRET) probes	LightCycler	ITS gene	27	PCR 7
9	RT hybridization (FRET) probes	LightCycler	ITS gene	2.7	PCR 7
11	RT hydrolysis (TaqMan) probe	TaqMan	18S gene	27	PCR 8
12	RT hydrolysis (TaqMan) probe	LightCycler	28S gene	27	PCR 1
14	RT hybridization (FRET) probes	LightCycler	ITS gene	27	PCR 9
15	RT hydrolysis (TaqMan) probe	Mx3000P	28S gene	2.7	PCR 1
16	RT FAM molecular beacons	LightCycler	ITS1 gene	270 ^d	PCR 10
17	Nested PCR	Conventional	18S gene	2.7	PCR 11
18	RT hybridization (FRET) probes	LightCycler	18S gene	2.7	PCR 5^c
19	RT hydrolysis (TaqMan) probe	Smartcycler	18S gene	27	PCR 12
20	RT hydrolysis (TaqMan) probe	TaqMan	18S gene	27	PCR 2
22	RT hybridization (FRET) probe	LightCycler	ITS gene	2.7	PCR 13
23	RT hydrolysis (TaqMan) probe	Rotorgene	28S gene	2.7	PCR 1
24	Nested PCR	Conventional	18S gene	270 ^e	PCR 3

^a A total of 13 different PCR strategies were used by the 21 centers that returned results. Assays with enhanced PCR performance for the detection of conidia below the threshold of detection are indicated in boldface. PCR 1 is the assay of White et al. (31). Three of five centers that used that assay achieved enhanced PCR performance. Five of five centers that used that assay attained the threshold. The assay was also one of two assays deemed to be optimal by the United Kingdom Fungal PCR Consensus Group (30). PCR 2 is the assay of Kami et al. (12). One of two centers that used that assay achieved enhanced PCR performance. Two of two centers that used that assay attained the threshold. The assay was also one of two assays deemed to be optimal by the United Kingdom Fungal PCR Consensus Group (30). Note that the assay should not be performed on the Roche LightCycler system (30). PCR 5 is the assay described by Klingspor and Jalal (13) and Loeffler et al. (17). One of two centers that used that assay achieved enhanced PCR performance. Two of two centers that used that assay attained the threshold. PCR 6 is the assay of Lengerova et al. (15). The one center that used that assay achieved enhanced PCR performance. PCR 7 is the Roche Septifast test. One of two centers that used that assay achieved enhanced PCR performance. Two of two centers that used that assay attained the threshold. PCR 13 is the assay of Loeffler et al. (16). The one center that used that assay achieved enhanced PCR performance. As PCR 11 is a nested PCR system, its use is not recommended by the EAPCRI. Centers 10, 13, and 21 were unable to return results. Abbreviations: RT, real-time; FRET, fluorescence resonance energy transfer; FAM, 6-carboxyfluorescein; Rotorgene, Corbett Rotorgene apparatus; LightCycler, Roche LightCycler apparatus, various models; TaqMan, Applied Biosystems TaqMan apparatus, various models; Mx 3000P, Stratagene Mx3000P apparatus; Smartcycler, Cepheid Smartcycler apparatus.

^b As determined by the PCR performance panel.

^c The PCR 4 and PCR 5 assays use the same probes but use slightly different primer sequences.

^d PCR 10 was able to reproducibly detect <0.27 copies/ μ l but failed to detect 2.7 and 27 copies/ μ l.

^e The panel was delayed in transit and results excluded from analysis.

TABLE 3. Categorical binary covariates investigated by regression methods

Covariate	Explanation
Extraction method	Compliant with extraction recommendations: yes or no
Blood vol used ^a	Entire blood vol used: yes or no
Beads ^a	Beads for mechanical cell wall disruption used: yes or no
Internal control ^a	Internal control PCR used: yes or no
RCLB.....	Red cell lysis buffer used: yes or no
WCLB.....	White cell lysis buffer used: yes or no
NaOH	NaOH used as lytic agent: yes or no
Purification.....	A protocol for DNA purification was used after bead beating
More than nine manual steps	Number of manual steps exceeds nine: yes or no
ITS	Internal transcribed spacer (ITS) target used for <i>Aspergillus</i> PCR: yes or no
18S.....	18S rRNA gene target used for <i>Aspergillus</i> PCR: yes or no
28S.....	28S rRNA gene target used for <i>Aspergillus</i> PCR: yes or no
Elution vol.....	Elution vol below 100 μ l: yes or no
Low specificity	Less than 100% specificity: yes or no

^a Criteria used to determine compliance.

the conidial concentration, which was the greatest for the higher fungal burdens, and the rates for the 2008 panel were better than those for the 2007 panel (Table 5 and Fig. 2). The sensitivity and DOR showed considerable interlaboratory variability, resulting in two distinct populations, although most centers achieved satisfactory specificity (Table 4 and Fig. 3). Upon further investigation, it was shown that the sensitivity for compliant centers was significantly greater than that for non-

TABLE 4. Mean performance statistics for protocols used in the 2008 EAPCRI WB panel^a

Extraction protocol	Sensitivity		Specificity		DOR	
	%	95% CI	%	95% CI	Value	95% CI
All	80.6	68.2–88.9	86.3	76.1–92.6	39.8	12.4–127.3
Compliant	88.7	79.8–94.0	91.6	79.1–96.9	119.9	44.9–319.9
Noncompliant	57.6	37.9–75.2	77.2	61.2–87.9	8.9	1.7–45.5

^a Twelve centers that used 10 different DNA extraction protocols and 9 different PCR amplification procedures were compliant. Nine centers that used seven different DNA extraction protocols and seven different PCR amplification procedures were noncompliant. The differences between the compliant and the noncompliant centers were statistically significant for sensitivity ($P = 0.008$) and DOR ($P = 0.006$).

TABLE 5. Positivity rates for the two EAPCRI WB panels and PCR performance panel^a

Fungal load (total no. of conidia)	Potential total no. of rRNA copies ^b	No. of copies/ μ l ^c	Positivity rate (% [no. of PCR tests])		
			PCR panel ($n = 52$)	2007 panel ($n = 61$)	2008 panel ($n = 59$)
>10,000	5.4×10^5	2.7×10^5	94.2 (49)	NT	NT
		2.7×10^4	94.2 (49)	NT	NT
		5.4×10^3	NT	77.0 (47)	NT
		2.7×10^3	92.3 (48)	NT	NT
		5.4×10^2	NT	75.4 (46)	98.3 (58)
		2.7×10^2	94.2 (49)	57.4 (35)	98.3 (58)
1,000	5.4×10^4	5.4×10^1	NT	34.4 (21)	78.0 (46)
500	2.7×10^4	4.1×10^1	NT	36.1 (22)	67.8 (40)
100	5.4×10^3	2.7×10^1	86.5 (45)	37.7 (23)	74.6 (44)
75	4.1×10^3	$1.1-1.4 \times 10^1$	NT	29.5 (18)	62.7 (37)
50	2.7×10^3	5.4	NT	27.9(17)	49.2 (29)
20–25	$1.1-1.4 \times 10^3$	2.7	40.4 (21)	NT	NT
10	5.4×10^2	0	2.9 (3) ^e	4.9 (6) ^f	11.3 (20) ^g
0 ^d	0	0			

^a A total of 22 centers contributed results for the PCR performance panel and the 2007 WB panel, although 1 center returned results only for the PCR panel, while another returned results only for the WB panel. For the 2008 WB panel, 21 centers returned the results. The theoretical threshold is indicated in boldface. NT, not tested in this panel.

^b Based on 54 copies of rRNA copies per genome (9).

^c The calculations were based on 100% extraction efficiency and an elution volume of 100 μ l.

^d The 1st panel contained two negative control specimens. The 2nd panel contained three negative control specimens.

^e As the panel contained two negative specimens, the total number of tests was 104 and not 52.

^f For one center, both negative specimens were PCR positive. As the panel contained two negative specimens, the total number of tests was 122 and not 61.

^g As the panel contained three negative specimens, the total number of tests was 177 and not 59.

compliant centers (Table 4 and Fig. 3). Six centers failed to achieve 100% specificity, and five of these centers had been classified as noncompliant. To exclude the possibility that positive results arose from contamination and the calculation of false associations, a further meta-analysis was performed without the results from those six centers.

There was a positive correlation by bivariate meta-regression analysis between sensitivity and the compliant protocols, the use of bead beating, and the use of an internal control PCR (Table 6). Multivariate regression analysis determined positive correlations between sensitivity and the use of white cell lysis

buffer ($t = 2.95$, $P = 0.018$), bead beating ($t = 2.57$, $P = 0.033$), and an internal control PCR ($t = 2.25$, $P = 0.054$) but a negative correlation between sensitivity and the use of elution volumes greater than 100 μ l ($t = -2.53$, $P = 0.035$).

DISCUSSION

The results from this study showed that most PCR amplification systems assessed (18/20, 90%) efficiently detected the equivalent of 50 *A. fumigatus* conidia and that 45% (9/20) were able to detect the equivalent of 5 *A. fumigatus* conidia (Table

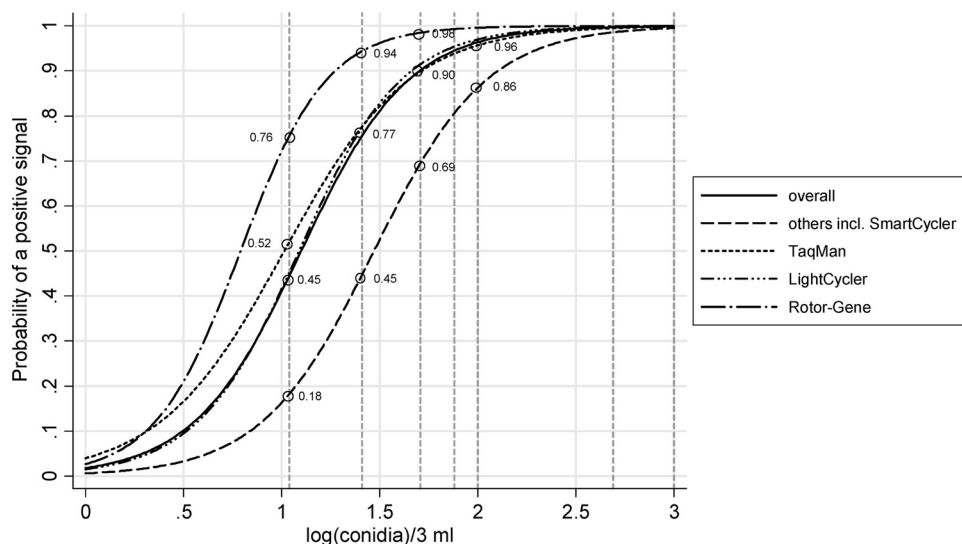


FIG. 2. The probability of a positive *Aspergillus* PCR signal when the 2008 WB panel is tested. The vertical dashed reference lines indicate (log-transformed) conidial loads of 10, 25, 50, 75, 100, 500, and 1,000. They intersect the various platform-specific logistic curves at the indicated probability levels. Twenty-one centers performed 59 tests on each specimen. Ten centers used the Roche LightCycler apparatus to perform a total of 30 replicates for each specimen, five centers used the Applied Biosystems TaqMan apparatus to perform a total of 13 replicates, two centers used the Corbett RotorGene apparatus to perform a total of 6 replicates, and four centers used other platforms to perform a total of 10 replicates.

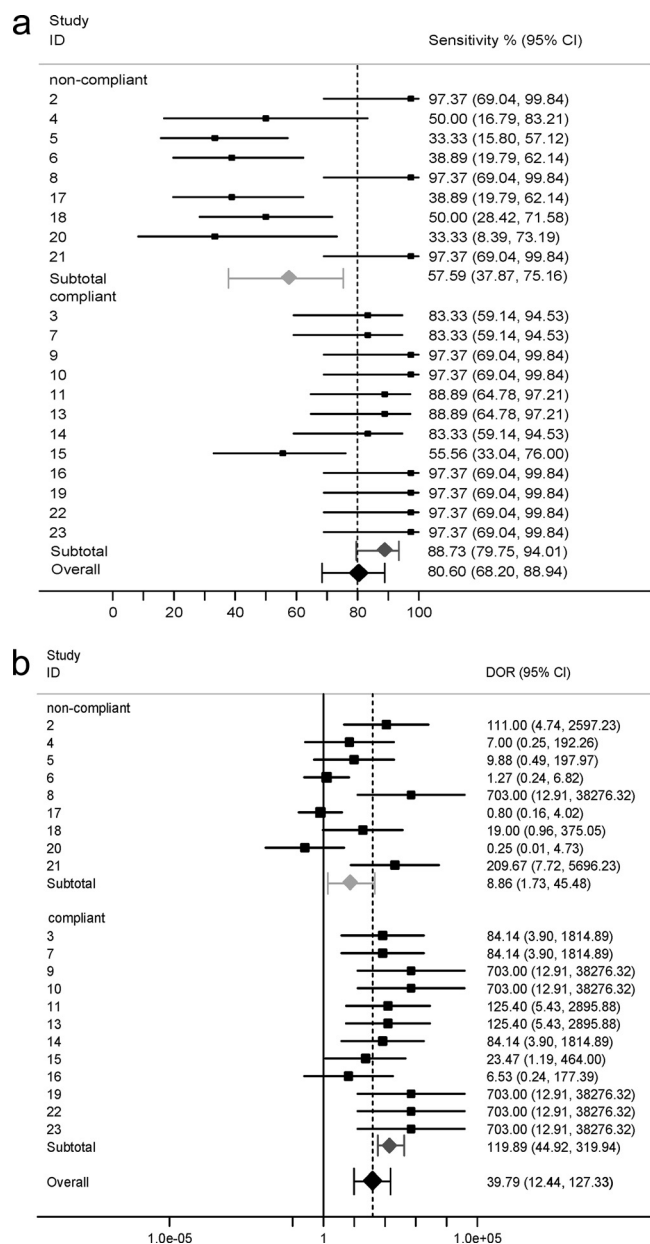


FIG. 3. Forest plot of sensitivity (a) and DOR (b) for each center participating in testing of the 2008 EAPCRI WB panel. Individual centers are indicated by numbers. The centers are grouped according to their compliance with the extraction protocol. The effect size sensitivity (%) and DOR. The closed rhomboids indicate the average values of sensitivity/DOR at the group level.

2). However, half the centers suffered dramatic reductions in detection thresholds when they tested the 2007 WB panel, highlighting the impact of the WB DNA extraction procedures used. Indeed, the extraction procedure appears to be the rate-limiting step and focused the investigations accordingly. Detailed assessment of the extraction methods used with the 2007 WB panel showed that protocols that used the entire specimen and bead beating were associated with better performance and were recommended for use for analysis of the 2008 WB panel, resulting in improved positivity rates (Table 5). It is accepted

that the spiking of blood with conidia does not accurately reflect disease, as angioinvasion occurs via hyphal penetration. However, it is not possible to accurately quantify hyphae that may also be multinucleate, resulting in interspecimen variations. The recommended beat-beating protocol is equally effective at disrupting hyphae (28).

Three noncompliant centers (centers 2, 8, and 21) achieved excellent analytical sensitivity, and evaluation of their protocols revealed one center (center 2) that had been deemed to be noncompliant for not using an internal control PCR but otherwise had followed the recommendations (Table 1). The other two centers used only half of the specimen provided but otherwise followed the recommendations. However, two of the three noncompliant centers (centers 2 and 21) with excellent sensitivities also generated false-positive results, casting doubt over the relevance of the putatively true-positive results from that center. From a diagnostic perspective, any positive results in which the negative control also tests positive should be disregarded.

The sensitivities of the compliant systems were >30% higher than those of the noncompliant systems (Table 4). Only one compliant center (center 15) generated poor sensitivities. Detailed examination of the protocol used by that center showed that even though the center used the entire specimen, bead beating, and an internal control PCR, it made no attempt to remove the human blood cells (Table 1). This would have reduced the sensitivity, as white cell lysis is positively associated with sensitivity. Only one compliant center (center 16) had poor specificity, and this was reflected in a reduced diagnostic odds ratio (Fig. 3).

A high degree of analytical sensitivity is essential, as the fungal burden circulating in the bloodstream is low (17, 20). The use of larger sample volumes allows the detection of lower concentrations of fungal burden because both the overall amount of target and the opportunity for retrieval are increased (23). Paradoxically, too much extrinsic DNA may inhibit the PCR process, so it is essential that an internal control be used to prevent the reporting of false-negative results.

Statistical analysis between sensitivity and the other covariates showed that the recommendations (use of the entire spec-

TABLE 6. Bivariate meta-regression analysis between logit sensitivity and the additional covariates for centers with 100% specificity^a

Covariate	<i>t</i>	<i>P</i>
Compliant extraction method	2.69	0.018
Blood vol used	0.22	0.829
RCLB	1.12	0.285
WCLB	2.08	0.058
NaOH	1.59	0.137
Beads	2.59	0.023
Purification	1.14	0.274
More than nine manual steps	0.46	0.650
ITS	1.54	0.148
18S	-1.89	0.082
28S	0.48	0.637
Internal control PCR	2.85	0.015
Elution vol	-0.75	0.469

^a *n* = 15 centers. *t*, slope/standard error of the slope. A positive *t* value indicates a favorable correlation and vice versa. Significant correlations are indicated by a *P* value of <0.05 and are indicated in boldface.

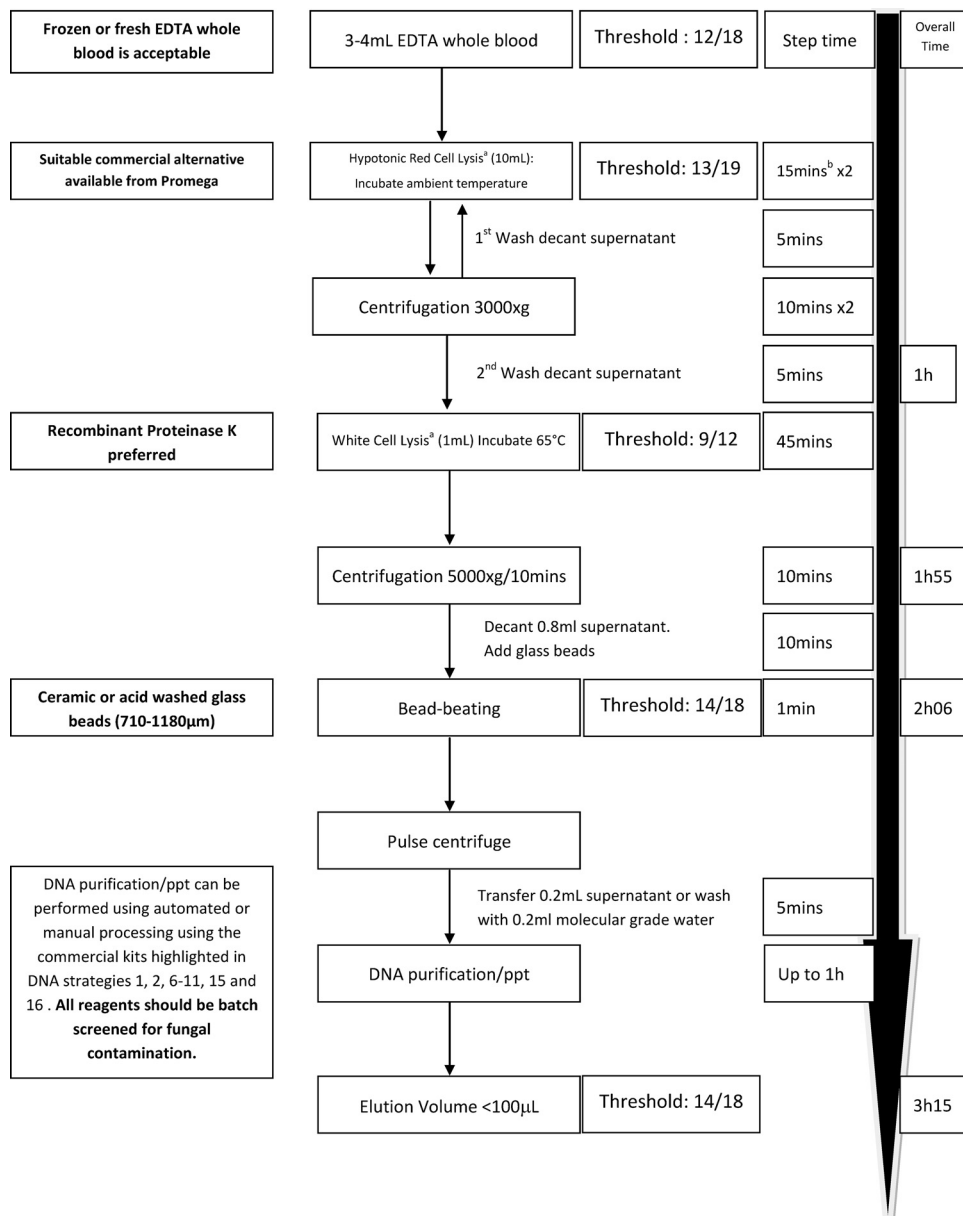


FIG. 4. Recommended protocol for extracting *Aspergillus* DNA from whole blood. Boldface text is expert opinion. The threshold is the proportion of centers reaching the threshold when the step is used. ppt, precipitation; a, the lysis buffer described previously (6); b, involves 5 min of processing time and 10 min of incubation time; when frozen specimens are processed, incubation is not necessary.

imen, bead beating, and an internal control PCR) and the individual stage of white cell lysis were all positively associated with sensitivity. Conversely, negative correlations were associated with larger elution volumes ($>100 \mu\text{l}$), which reduced the final DNA concentration.

There were no significant correlations between sensitivity and the PCR target. However, multicopy targets should be employed to enhance performance with some strains of *A. fumigatus* possessing almost 10^2 copies of the 18S rRNA gene (9). All rRNA gene targets (the 18S, 5.8S, 28S, and ITS regions) have the same copy number within individual organisms but may share significant similarity between fungal species and the homologous human genes, and both false positivity and

false negativity may be a result of inappropriate oligonucleotide design (30, 32).

Recommendations of EAPCRI. The recommended protocol for extracting fungal DNA from EDTA-anticoagulated whole-blood specimens was determined by comparing the protocols described in Table 1, their associated analytical performance characteristics, and the statistical association between the individual steps of the extraction process and sensitivity. The protocol is illustrated in Fig. 4.

We recommend that EDTA be the only anticoagulant used for blood specimens, as heparin and sodium citrate have been associated with inhibition and contamination, respectively (7, 33). Relatively large blood volumes ($\geq 3 \text{ ml}$) are required, and

it is important to efficiently lyse both red and white blood cells prior to bead beating to disrupt the fungal cell. Fungal lysis through recombinant lyticase digestion should be replaced by bead beating, which removes considerable expense and additional processing time (30 to 60 min). After the fungal cell is lysed, commercial protocols can be used to purify, capture, and elute the DNA. Then different DNA extraction protocols shown in Table 1 were associated with good analytical sensitivity and specificity. Reagent contamination can be problematic when fungal PCR is performed (18, 22). It is good practice to screen both commercial and in-house reagents for contamination by using negative extraction controls. Likewise, positive extraction controls with consistent loads and representative of typical IA should routinely be used to monitor the performance of the extraction procedure. The use of DNA elution volumes greater than 100 μ l should be avoided.

Most PCR amplification systems work efficiently, the variability in current performance appears to be a direct consequence of the extraction technique used, and it is not necessary to define an individual PCR assay. However, the six real-time PCR protocols (PCRs 1, 2, 5, 6, 7, and 13) described in Table 2 had EPCR and may provide improved performance when their use is coupled with the DNA extraction technique described in Fig. 4. In general, all PCR testing should be performed at least in duplicate, with further testing being performed as required to interpret contradictory results that may arise as result of the low fungal burden or the limits of real-time PCR detection (20). An internal control system should also be used to avoid false-negative results. The internal control target should be present at levels similar to those that result in positive results by a typical *Aspergillus* PCR (C_T values, 35 to 40 cycles).

These results confirm the analytical validity of the *Aspergillus* PCR for the screening and detection of *Aspergillus*. Further external validity and the testing accuracy of the proposed method will be strategically determined by other laboratories that have expressed an interest in this EAPCRI (11). Studies into dynamic linearity may also be necessary to determine the performance of the PCR across various fungal burdens, which is particularly important in monitoring therapeutic responses. Studies with animal models are being conducted to compare the performance of the PCR by using the different specimen options. Clinical validity also needs to be established in large-scale prospective trials designed to determine the performance and utility of the *Aspergillus* PCR with specimens from high-risk populations.

ACKNOWLEDGMENTS

The EAPCRI of ISHAM comprises the steering committee and three working groups. The members of the EAPCRI steering committee are J. Peter Donnelly (chair of the foundation), Radboud University Nijmegen Medical Centre, Nijmegen, Netherlands; Juergen Loeffler (secretary), Wuerzburg University, Wuerzburg, Germany; and Rosemary A. Barnes (treasurer), Cardiff University, Cardiff, United Kingdom. The members of the EAPCRI Laboratory Working Group are Juergen Loeffler (leader of the Laboratory Working Group, Data Analysis Group); P. Lewis White, NPHS Microbiology, Cardiff, United Kingdom (panel development/distribution, Data Analysis Group); Stephane Bretagne, Henri Mondor Hospital, Creteil, France (Data Analysis Group); Willem Melchers, Radboud University Nijmegen Medical Centre, Nijmegen, Netherlands; Lena Klingspor, Karolinska University Hospital, Stockholm, Sweden; Niklas Finnstrom, Cepheid

AB, Toulouse, France; Elaine McCulloch and Craig Williams, Royal Hospital for Sick Children, Glasgow, United Kingdom; and Bettina Schulz, Charite University Hospital, Berlin, Germany. The members of the EAPCRI Clinical Working Group are Rosemary A. Barnes (leader of the Clinical Working Group); Catherine Cordonnier, Henri Mondor Hospital, Creteil, France; Johan Maertens, University Hospital Gasthuisberg, Leuven, Belgium; Lena Klingspor; Werner Heinz, Wuerzburg University, Wuerzburg, Germany; and Brian Jones, Glasgow Royal Infirmary, Glasgow, United Kingdom. The members of the EAPCRI Statistical Working Group are Carlo Mengoli, University of Padua, Padua, Italy; Mario Cruciani, University of Verona, Verona, Italy; Juergen Loeffler; Rosemary A. Barnes; and J. Peter Donnelly. The participants and the participating laboratories include Richard Barton and Richard Hobson, Leeds General Infirmary, Leeds, United Kingdom; Dietet Buchheidt, Mannheim University Hospital, Mannheim, Germany; Daniel Codl, Charles University, Prague, Czech Republic; Manuel Cuenca-Estrella, National Microbiology Institute, Madrid, Spain; Malcolm Guiver, HPA Northwest, Manchester, United Kingdom; Catriona Halliday and Sue Sleiman, Westmead Hospital, Westmead, NSW, Australia; Petr Haml, Palacky University, Olomouc, Czech Republic; Cornelia Lass-Floerl, University of Medicine, Innsbruck, Austria; Chris Linton and Elizabeth Johnson, United Kingdom Mycology Reference Laboratory, HPA Southwest, Bristol, United Kingdom; Clare Ling and Chris Kibbler, Royal Free Hospital, London, United Kingdom; Martina Lengerova, Central Molecular Biology, Gene Therapy and Haematology Clinic, Brno, Czech Republic; Jose Palomares, University Hospital of Valme, Seville, Spain; Tom Rogers and Stephane Duval, Trinity College, Dublin, Ireland; Boualem Sennid, Lille University, Lille, France; and Birgit Willinger, University of Medicine, Vienna, Austria.

EAPCRI thanks Andreas Opitz (Institute of Transfusional Medicine, Wuerzburg University, Wuerzburg, Germany) for drawing and screening the blood kindly donated by our volunteers.

REFERENCES

1. Ascigliu, S., J. H. Rex, B. de Pauw, J. E. Bennett, J. Bille, F. Crokaert, D. W. Denning, J. P. Donnelly, J. E. Edwards, Z. Erjavec, D. Fiere, O. Lortholary, J. Maertens, J. F. Meis, T. F. Patterson, J. Ritter, D. Selleslag, P. M. Shah, D. A. Stevens, T. J. Walsh, and the Invasive Fungal Infections Cooperative Group of the European Organization for Research and Treatment of Cancer, Mycoses Study Group of the National Institute of Allergy and Infectious Diseases. 2002. Defining opportunistic invasive fungal infections in immunocompromised patients with cancer and hematopoietic stem cell transplants: an international consensus. *Clin. Infect. Dis.* **34**:7–14.
2. Bossuyt, P. M., J. B. Reitsma, D. E. Bruns, C. A. Gatsonis, P. P. Glasziou, L. M. Irwig, J. G. Lijmer, D. Moher, D. Rennie, H. C. de Vet, and the STARD Group. 2003. Towards complete and accurate reporting of studies of diagnostic accuracy: the STARD initiative. *Fam. Pract.* **21**:4–10.
3. Caillot, D., J. F. Couaillier, A. Bernard, O. Casasnovas, D. W. Denning, L. Mannone, J. Lopez, G. Couillault, F. Piard, O. Vagner, and H. Guy. 2001. Increasing volume and changing characteristics of invasive pulmonary aspergillosis on sequential thoracic computed tomography scans in patients with neutropenia. *J. Clin. Oncol.* **19**:253–259.
4. De Pauw, B., T. J. Walsh, J. P. Donnelly, D. A. Stevens, J. E. Edwards, T. Calandra, P. G. Pappas, J. Maertens, O. Lortholary, C. A. Kauffman, D. W. Denning, T. F. Patterson, G. Maschmeyer, J. Bille, W. E. Dismukes, R. Herbrecht, W. W. Hope, C. C. Kibbler, B. J. Kullberg, K. A. Marr, P. Muñoz, F. C. Odds, J. R. Perfect, A. Restrepo, M. Ruhnke, B. H. Segal, J. D. Sobel, T. C. Sorrell, C. Viscoli, J. R. Wingard, T. Zaoutis, J. E. Bennett, European Organization for Research and Treatment of Cancer/Invasive Fungal Infections Cooperative Group, and National Institute of Allergy and Infectious Diseases Mycoses Study Group (EORTC/MSG) Consensus Group. 2008. Revised definitions of invasive fungal disease from the European Organization for Research and Treatment of Cancer/Invasive Fungal Infections Cooperative Group and the National Institute of Allergy and Infectious Diseases Mycoses Study Group (EORTC/MSG) Consensus Group. *Clin. Infect. Dis.* **46**:1813–1821.
5. Donnelly, J. P. 2006. Polymerase chain reaction for diagnosing invasive aspergillosis: getting closer but still a ways to go. *Clin. Infect. Dis.* **42**:487–489.
6. Einsele, H., H. Hebart, G. Roller, J. Löffler, I. Rothenhofer, C. A. Muller, R. A. Bowden, J. van Burik, D. Engelhard, L. Kanz, and U. Schumacher. 1997. Detection and identification of fungal pathogens in blood by using molecular probes. *J. Clin. Microbiol.* **35**:1353–1360.
7. Garcia, M. E., J. L. Blanco, J. Caballero, and D. Gargallo-Viola. 2002. Anticoagulants interfere with PCR used to diagnose invasive aspergillosis. *J. Clin. Microbiol.* **40**:1567–1568.
8. Greene, R. E., H. T. Schlamm, J. W. Oestmann, P. Stark, C. Durand, O.

- Lortholary, J. R. Wingard, R. Herbrecht, P. Ribaud, T. F. Patterson, P. F. Troke, D. W. Denning, J. E. Bennett, B. E. de Pauw, and R. H. Rubin. 2007. Imaging findings in acute invasive pulmonary aspergillosis: clinical significance of the halo sign. *Clin. Infect. Dis.* **44**:373–379.
9. Herrera, M. L., A. C. Vallor, J. A. Gelfond, T. F. Patterson, and B. L. Wickes. 2009. Strain-dependent variation in 18S ribosomal DNA copy numbers in *Aspergillus fumigatus*. *J. Clin. Microbiol.* **47**:1325–1332.
 10. Hope, W. W., T. J. Walsh, and D. W. Denning. 2005. Laboratory diagnosis of invasive aspergillosis. *Lancet Infect. Dis.* **5**:609–622.
 11. Irwig, L., P. Bossuyt, P. Glasziou, C. Gatsonis, and J. Lijmer. 2002. Evidence base of clinical diagnosis: designing studies to ensure that estimates of test accuracy are transferable. *BMJ* **321**:669–671.
 12. Kami, M., T. Fukui, S. Ogawa, Y. Kazuyama, U. Machida, Y. Tanaka, Y. Kanda, T. Kashima, Y. Yamazaki, T. Hamaki, S. Mori, H. Akiyama, Y. Mutou, H. Sakamaki, K. Osumi, S. Kimura, and H. Hirai. 2001. Use of real-time PCR on blood samples for diagnosis of invasive aspergillosis. *Clin. Infect. Dis.* **33**:1504–1512.
 13. Klingspor, L., and S. Jalal. 2006. Molecular detection and identification of *Candida* and *Aspergillus* spp. from clinical samples using real-time PCR. *Clin. Microbiol. Infect.* **12**:745–753.
 14. Kontoyiannis, D. P., and K. A. Marr. 2009. Therapy of invasive aspergillosis: current consensus and controversies, p. 491–502. In J.-P. Latge and W. J. Steinbach (ed.), *Aspergillus fumigatus* and aspergillosis. ASM Press, Washington, DC.
 15. Lengerova, M., K. Hrnčirova, I. Kocmanova, Z. Racil, B. Weinbergerova, J. Vorlicek, and J. Mayer. 2008. Detection of *Aspergillus fumigatus* in bronchoalveolar lavage samples from immunocompromised patients using real-time PCR with fungal DNA preamplification, p.630. Abstr. 48th Intersci. Conf. Antimicrob. Agents Chemother. American Society for Microbiology, Washington, DC.
 16. Loeffler, J., N. Schultze, H. Hebart, and H. Einsele. 2005. Detection of genomic DNA from *Aspergillus* species using the LightCycler technology, poster M-721. Abstr. 45th Intersci. Conf. Antimicrob. Agents Chemother. American Society for Microbiology, Washington, DC.
 17. Loeffler, J., N. Henke, H. Hebart, D. Schmidt, L. Hagemeyer, U. Schumacher, and H. Einsele. 2000. Quantification of fungal DNA by using fluorescence resonance energy transfer and the LightCycler system. *J. Clin. Microbiol.* **38**:586–590.
 18. Loeffler, J., H. Hebart, R. Bialek, L. Hagemeyer, D. Schmidt, F. P. Serey, M. Hartmann, J. Eucker, and H. Einsele. 1999. Contaminations occurring in fungal PCR assays. *J. Clin. Microbiol.* **37**:1200–1202.
 19. Mennink-Kersten, M. A., J. P. Donnelly, and P. E. Verweij. 2004. Detection of circulating galactomannan for the diagnosis and management of invasive aspergillosis. *Lancet Infect. Dis.* **4**:349–357.
 20. Millon, L., R. Piarroux, E. Deconinck, C. E. Bulabois, F. Grenouillet, P. Rohrlisch, J. M. Costa, and S. Bretagne. 2005. Use of real-time PCR to process the first galactomannan-positive serum sample in diagnosing invasive aspergillosis. *J. Clin. Microbiol.* **43**:5097–5101.
 21. Pfeiffer, C. D., J. P. Fine, and N. Safdar. 2006. Diagnosis of invasive aspergillosis using a galactomannan assay: a meta-analysis. *Clin. Infect. Dis.* **42**:1417–1427.
 22. Rimek, D., A. P. Garg, W. H. Haas, and R. Kappe. 1999. Identification of contaminating fungal DNA sequences in zymolyase. *J. Clin. Microbiol.* **37**:830–831.
 23. Schulz, B., K. Weber, C. Radecke, C. Scheer, and M. Ruhnke. 2009. Effect of different sample volumes on the DNA extraction of *Aspergillus fumigatus* from whole blood. *Clin. Microbiol. Infect.* **15**:686–688.
 24. Schwartz, S., and M. Ruhnke. 2009. *Aspergillus* sinusitis and cerebral aspergillosis, p. 301–318. In J.-P. Latge and W. J. Steinbach (ed.), *Aspergillus fumigatus* and aspergillosis. ASM Press, Washington, DC.
 25. Sterne, J. A. C., M. J. Bradburn, and M. Egger. 2001. Meta-analysis in Stata™, p. 347–369. In M. Egger, G. Davey Smith, and D. G. Altman (ed.), *Systematic reviews in health care: meta-analysis in context*, 2nd ed. BMJ Publishing Group, London, United Kingdom.
 26. Tong, K. B., C. J. Lau, K. Murtagh, A. J. Layton, and R. Seifeldin. 2009. The economic impact of aspergillosis: analysis of hospital expenditures across patient subgroups. *Int. J. Infect.* **13**:24–36.
 27. Upton, A., K. A. Kirby, P. Carpenter, M. Boeckh, and K. A. Marr. 2007. Invasive aspergillosis following hematopoietic cell transplantation: outcomes and prognostic factors associated with mortality. *Clin. Infect. Dis.* **44**:531–540.
 28. Van Burik, J. A., H. R. W. Schreckhise, T. C. White, R. A. Bowden, and D. Myerson. 1998. Comparison of six extraction techniques for isolation of DNA from filamentous fungi. *Med. Mycol.* **36**:299–303.
 29. White, P. L., and R. A. Barnes. 2009. *Aspergillus* PCR, p. 373–392. In J.-P. Latge and W. J. Steinbach (ed.), *Aspergillus fumigatus* and aspergillosis. ASM Press, Washington, DC.
 30. White, P. L., R. Barton, M. Guiver, C. J. Linton, S. Wilson, M. Smith, B. L. Gomez, M. J. Carr, P. T. Kimmitt, S. Seaton, K. Rajakumar, T. Holyoake, C. C. Kibbler, E. Johnson, R. P. Hobson, B. Jones, and R. A. Barnes. 2006. A consensus on fungal polymerase chain reaction diagnosis?: a United Kingdom-Ireland evaluation of polymerase chain reaction methods for detection of systemic fungal infections. *J. Mol. Diagn.* **8**:376–384.
 31. White, P. L., C. J. Linton, M. D. Perry, E. M. Johnson, and R. A. Barnes. 2006. The evolution and evaluation of a whole blood polymerase chain reaction assay for the detection of invasive aspergillosis in hematology patients in a routine clinical setting. *Clin. Infect. Dis.* **42**:479–486.
 32. White, P. L., and R. A. Barnes. 2006. *Aspergillus* PCR—platforms, strengths and weaknesses. *Med. Mycol.* **44**(Suppl.):191–198.
 33. Williamson, E. C. M. 2001. Molecular approaches to fungal infections in immunocompromised patients. MD thesis. University of Bristol, Bristol, United Kingdom.