

Solar-powered Direct-current loads in small buildings

P. Sarnobat^{1,2}
psarnobat@gmail.com
S.Lannon¹
Lannon@cardiff.ac.uk

¹Welsh School of Architecture,
Bute Building,
King Edward VII Avenue,
Cardiff, CF10 3NB, UK.

²Sarnobat Solutions and
Sustainability,
53 Llwynygrant Road,
Penylan,
Cardiff, CF23 9HL, UK.

ABSTRACT

Traditional light bulbs (e.g. Incandescent, Fluorescent) use too much electricity, convert very little energy into light of sufficient quality, and in their production use toxic contaminants. During the last few years a new type of light source, LED (Light Emitting Diode) bulb, has gained increasing popularity and its costs are set to plunge even further. LED bulbs offer many advantages over traditional sources, and they can be used as a direct replacement to existing lighting. This paper will use a spreadsheet-based analysis with hourly solar data supplied by Ecotect to show that the efficiency of LED installations can be increased when used in conjunction with Photovoltaic (PV) modules, as the two generate (and use) direct-current (DC) electricity, thereby eliminating intermediate-level losses in the electronic circuitry. If a storage battery is included, the PV generates electricity during the times when the occupants are not necessarily using the lighting, but the stored electricity can be used to power the lighting when the energy is required. The latest results demonstrate that a slight reduction in the required floor area to be lit allows the Solar-Battery-LED system to be implemented in small buildings using a storage battery size that is within the range of present commercial devices. Further, a future projection shows that by 2050, the payback time is expected to reduce to less than one third of what it is in 2013.

Keywords

Energy Efficiency, Photovoltaics, LED Lighting, Simulation.

1. INTRODUCTION AND BACKGROUND

Energy efficiency has been taken on an increasingly important role, given the threat of dwindling resources, power blackouts, and climate change. Buildings are one of the largest users of energy in the Western world, and there is plenty of scope for reducing its use. Lighting contributes around 20% of the energy use, and the potential exists to half this figure. A technology that has matured during the last few years is semiconductor Light Emitting Diodes (LED), which use direct current (DC) electricity for their operation. Another technology that has also gained popularity in the Built Environment in recent years is semiconductor PhotoVoltaics (PV), which generate DC electricity directly from sunlight. The two technologies can be used in combination to potentially produce an efficient and sustainable interior lighting system.

Traditional lighting systems used incandescent (i.e. filament) light bulbs. Although cheap to purchase, and possessing a good light quality which mimics natural daylight, less than 5% of the

electrical power is converted into light with the remainder being emitted as heat into the room. This means energy is wasted both in powering the bulb, and in the building cooling systems to extract the emitted heat from the room.

A few decades ago, fluorescent lighting came on the market: It is more efficient than incandescent lighting (around 10%), but produces a rather artificial light output profile which can cause psychological discomfort to occupants, and also produces toxic substances (e.g. mercury) making their safe disposal quite problematic.

LEDs were first invented in the 1960s and were mainly used in lighting applications for electronic equipment, due to them emitting a particular colour, and due to emitting light in a quite narrow beam (less than 30 degrees). Compared to old light sources, they have a much longer lifetime, typically 25 years as opposed to 5 years (CFL) and 2 years (incandescent). The last decade has seen unprecedented improvements; LEDs can generate warm-white light with a spectrum that is almost as good as daylight, sophisticated optics that allow light emission at both wide and narrow beam angles have been developed, and efficiencies are now at least as high as the corresponding CFL.

The big breakthrough came in 2008 [1, 2] when it was shown that it is possible to take advantage of the processes in the manufacturing of computer chips to reduce the cost of producing LEDs by up to tenfold; the typical LED now costs around 3 times as much as its CFL counterpart but its physical performance is at least as good as; if not better. According to Shailesh [3], the operating costs over 25 years can be reduced by 80% if the constant use of fluorescent lamps is replaced by LED lighting combined with sensors for daylight and occupancy levels. The one outstanding issue that remains is thermal management: Although less heat is produced than in other light sources, if it is not extracted away from the device then the light output will degrade [4], or even worse damage will occur. Both Parry [5] and Narendran [6] discuss how to address the issue using Computational Fluid Dynamics.

Even a single luminaire can have its spectral output programmed to be time-varying such that it can mimic the behaviour of daylight over a full day [7]. Work is currently underway to develop 'Wi-fi' LED lighting, where it is hoped that information can be transmitted using optical photons as opposed to the current method using wireless (non-visible) photons. No doubt, there will be other innovative uses for LED lighting.

PV technology has traditionally been the domain of remote, off-grid systems, due to its efficiency losses when implemented in the form of a centralized, large-scale power generating plant. Improvements in performance and cost have made PV panels increasingly popular in being integrated into the building architecture, especially if they are roof-mounted. As of 2013, the typical efficiency of PV modules made out of single-junction monocrystalline silicon is 15% (polycrystalline silicon being 14%), implying a typical cost of around £2000 per installed kW, and this is set to improve even further. One must be careful not to confuse laboratory efficiency with (industrially-manufactured) module efficiency, where the former can be a lot higher. Single-junction cells have an upper limit on the efficiency of 30% due to the Shockley-Queisser limit which takes into account losses due to electromagnetic spectrum limitations, thermal losses, and electron-hole recombination. The development of multi-junction cells is underway, and laboratory efficiencies of 40% have been achieved, but module efficiencies are currently less than 10% and costs are much higher than silicon. This work shall mainly focus on monocrystalline silicon as it is currently the most widely used.

Solar electricity is DC, yet many of the appliances in a building are Alternating Current (AC), and an inverter is needed to make the required conversion; this will result in significant efficiency losses. Nevertheless, Liu has performed a system optimization for using PV and battery to power residential buildings in Queensland [8, 9], and finds that 6kW roof-mounted panels with an angle of 20-25 degrees can provide nearly two-thirds of the electricity requirements.

Given that LED lighting is also DC, this makes it ideal to use PV panels to power LED luminaires for interior room lighting; there are efficiency savings on not involving the use of an inverter. However, sunlight is not constant, and the lighting energy is sometimes needed when the sun does not shine; for a residential building energy is generated during the day when the occupants are out, and it is needed during the evening when the occupants have returned. Clearly, some sort of storage is required in the form of a suitable battery. During the winter months sunlight is minimal and electricity must be drawn from the grid, and correspondingly during the summer months more electricity will be produced than is needed for the building; the excess is sold to the grid at an externally determined rate. According to tests by Sastry [10], the combined PV and battery energy sizing can be reduced by up to 50% if PV modules are used to power LED lamps rather than CFL lamps. Note that although an inverter is not needed when PV is used to directly power LEDs, it is needed when use is made of the grid. Having said that, Boeke et. al. [11] show that using PV to power LED lights still results in electricity savings of 15% compared to using AC mains alone. Moreover, Boeke et. al. then state that by having an appropriate *local* DC electricity grid for rural businesses, the PV and Battery costs (and the overall economic costs of PV-powered systems) can be significantly reduced [12]. Patel [13] discusses a systematic procedure for calculating the overall efficiencies when various types of components are involved, and Podes discusses strategies for encouraging uptake of PV-LED systems [14].

The lifetime of the battery is determined by the number of charging-discharging cycles it can undergo when discharging to 80% of the full capacity - this is said to be a 'deep cycle'. The lifetime itself will depend on some key factors, including the

discharge depth, rate of discharge, and temperature. Shallow cycling of batteries is used for large discharge rates in order to minimize the heat generated within the battery and prolong its lifetime. In addition, the 'cycle efficiency' is the percentage energy hysteresis between charging and discharging. Leadbetter and Swan [15] give a broad and up-to-date overview of the comparison of different battery types that are suitable for renewable energy systems: Lead-acid (Pb-A), Sodium-Sulphur (Na-S), Vanadium-Redox (VRB), and Lithium-Ion (Li-Ion). Nickel-based batteries are being gradually phased out due to cost and environmental concerns. At the present time, the most common is Lead-acid, as this is a mature technology which has low upfront costs; however, it has a limited lifetime. Sodium-Sulphur has both low cost and long lifetime, however heat must be provided to keep the sodium in its liquid state (costing energy) during times when the battery is *not* operating, else a self-discharge of 20% per day occurs. This makes it unsuitable for PV systems, as the battery requirement tends to be seasonal. Vanadium redox has a very long lifetime, but needs to operate within a narrow temperature range of 10C to 35C, requiring local climate control (and the resulting additional energy), and a large storage space is required. Lithium-Ion batteries had their origins in microelectronic devices, but recently their capabilities have been scaled up to larger systems. Of the four battery types, they are the only one to possess a cycle efficiency of close to 100%. And when compared to their lead-acid counterparts, they last twice as long, and do not require regular maintenance. At the present time the initial costs are high, around 40p/kWh this is expected to drop below 30 p/kWh in a few years, making lithium-ion batteries competitive [17]. AllCell Technologies [18] give a worked example comparing Lead-Acid and Lithium-Ion technologies, demonstrating that the latter are already better suited to hot climates. Following [15] the relevant properties of the four battery types are summarized in Table 1. Comparison of the various battery types, where for Lead-Acid and Lithium-Ion batteries the 'Energy Cell' figures have been chosen as opposed to the 'Power Cell' figures, as we want to avoid using large currents for LED lighting.

Table 1. Comparison of the various battery types

	Pb-A	Li-Ion	Na-S	VRB
Cycle life	200-1800	3000+	4500	10000+
Energy Density (Wh/L)	50-80	200-500	150-250	16-33
Daily Self-Discharge %	<0.5	0.1-0.3	20	Negligible
Cycle efficiency	63-90	80-98	75-90	75-80
Capital Cost (\$ per kWh)	200-600	600-1200	350	150-1000

As the lighting load will vary during the year due to daylight, it is assumed that a suitable Maximum Power Point Tracking (MPPT)

algorithm is in operation (see [19] and references contained therein). An innovative method of increasing battery charging capacity by nearly 80% has been suggested by Huang [20], which states that instead of using MPPT for the PV in relation to the load, operate at *near* maximum power point while using pulse width modulation to control discharging of the battery. This also has the advantage of reducing the MPPT conversion loss when an undersized load is used.

It has been suggested that using solar-angle tracking for PV systems can increase power output by up to 50% [21]. Although this is not considered in the present work, it is nevertheless being considered by the authors in ongoing work.

An earlier investigation by the authors [18] of the effectiveness of using wall-mounted PV panels to power LED lighting systems for large, multi-level office buildings showed that the most important system parameters were the PV cost and efficiency, number of desk lights, Feed-In tariffs, and cost of the old lighting system being replaced. This article focuses on small buildings, especially residential, with PV panels mounted on a south-facing roof as opposed to the walls. Sometimes the roof has a complex shape, constraining the layout of the PV panels, and one cannot really associate any individual panel(s) as belonging to any particular room. In this case the building must be analysed as a whole. For simple roofs possessing a high degree of symmetry, then one can imagine dividing the roof space (and its PV panels) as 'belonging to' a particular floor of a two-level building. Indeed, this decomposition can be applied to some terraced houses that have been converted into separate apartments, each occupying one floor. Indeed, the simulation data was obtained for a detached house, but one could also imagine that it equivalently forms part of a row of terraced houses.

There are several tools on the market for both PV and lighting analysis; for PV the most popular being Homer, PV-Sys and TRNSYS (all three can also include the battery analysis), and Dialux, Ecotect, and IES-VE for lighting (IES-VE cannot consider battery behaviour, and only does a limited PV analysis in terms of supplying overall figures for the building). At present there is no single tool that can perform PV, battery, and lighting analysis all in one place. RetScreen is an all-round tool in this regard, but it only does monthly analysis. The spreadsheet developed for this work is intended to perform all three types of analyses based on *hourly* data. Work is underway to generalize the tool to also deal with hourly data obtained from thermal modelling.

The aim of this work is to give a first indication of the energy requirements, such that key decisions on several 'what-if' scenarios can be made during early-stage design. Once the optimum building configuration has been chosen, then detailed analysis can proceed as usual; indeed, the resulting value of the lighting energy from this can be input into the spreadsheet used in this analysis to more accurately determine the battery requirements and payback time. Further, a 'future scenario analysis' is performed by extrapolating the calculation from the present day to consider long-term horizons up to 2050, where nearly 70% of the population is expected to reside in urban areas. It will be shown that that the payback period will reduce to less than a third of what it is in 2013. Although this work focuses on the United Kingdom, the fundamental methods can be applied

anywhere in the world. It is hoped that this shall become a useful tool for architects, engineers, and building managers alike.

2. METHODOLOGY

The system under consideration is a detached house that consists of PhotoVoltaic (PV) panels on its south-facing roof (Figure 1), and its interior consisting of a battery and the DC loads, in this case the LED lighting.

Annual hourly solar radiation data for Bristol was obtained from ECOTECT, and converted into Watt-hours (Wh) for PV panels; this data was subsequently analysed in an Excel spreadsheet. Based on peak values of this data, and the available roof space, the PV system was sized at 1.5 kW.

The battery capacity was sized in relation to the daily excess of the load requirements versus the PV input, averaged over the year, and this was termed the daily **deficit**. In sizing the battery, a margin of 50% spare capacity was allowed to account for various losses. Its state of charge was determined by the difference between energy input from the PV, and energy extracted by the loads, including a battery self-discharge of approximately 2% per month. As the hourly self-discharge is relatively small, of the order of a fraction of a Wh, this behaviour can be assumed as linear.

The **state of charge** on the battery is determined by the difference between the PV input and its use by the loads. If this difference is greater than the maximum capacity of the battery, then any **excess** is fed to the grid. Conversely, if the PV input is insufficient to power the loads, then the (hourly) deficit will be taken from the grid. An hourly profile for the room lighting was specified to be on between 7am to 9am, and from 6pm to 11pm, with the lights off outside these hours; daylight was not considered. Based on this lighting schedule, and on the PV input, annual hourly values for the state of charge, deficit, and excess were calculated. From these quantities, the monthly values over the year of highest and lowest excess/deficit are obtained, and whether or not there is an annual net use of the grid. The price for using the grid is 12p per kWh

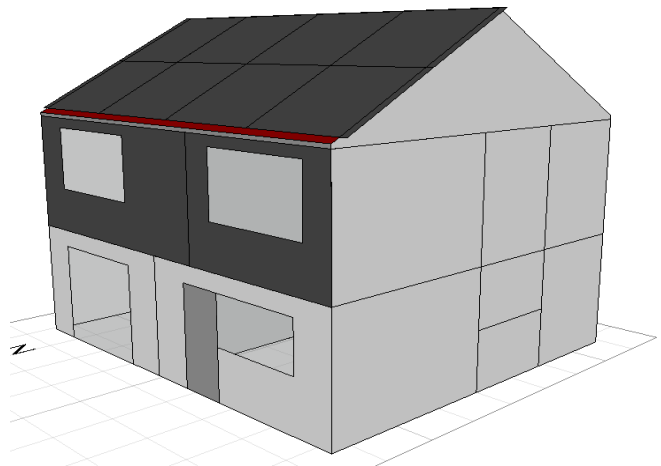


Figure 1. Cross section of the house, with PV panels mounted on the south-facing roof.

Excess energy fed to the grid will result in a price being paid by the government to the building owner, called a *feed-in tariff* (FIT). The FIT gradually decreases every year, and as of early 2013 it is 16 pence per kWh for generation (irrespective of whether or not it is used locally) plus an *additional* export tariff of 4.5p per kWh. This payment, in addition to the savings on the electricity bill prior to installation, can be used to offset the initial cost. The time it takes for this to happen is called the **payback** period, and it can depend on a number of factors. When describing the efficiency of a luminaire, one must only consider the wavelengths (and corresponding light energies) that are sensitive to human vision, and not anything outside this range. One therefore talks of lighting power in **lumens**, which, approximately speaking could be regarded as ‘optical watts’, and the number of lumens reaching a square metre of the working plane (which is an imaginary surface one metre above the floor) is termed **lux**. The ratio of lighting power to electrical power is termed **luminous efficacy**, or just ‘efficacy’.

The **Lumen Method** regards the light from a luminaire as corresponding to a mathematically equivalent source that is uniformly distributed over a certain area of the ceiling, and being emitted vertically downwards over that same area of the working plane. If the luminaire has power P and luminous efficacy η , then the total number of luminaires N that are required to produce a given lux level E at the working plane of area A is

$$N = \frac{EA}{\eta PMU}$$

M is the maintenance factor, and U is the utilization factor. M accounts for the degradation of the luminaire over time (e.g. due to dirt), and U describes the fraction of light from the luminaire that actually reaches the working plane.

The key determinant of the economic viability of the whole system is its lifetime costs, and in particular, the payback period taking into account inflation interest rates. The sum of the annual payments forms a geometric series, which can be evaluated in closed form. For a given capital cost of the PV-battery-LED system, annual FIT (G), market discount rate for investment ($d\%$), annual rate of electricity price inflation ($i\%$), and annual *operating* costs of the old lighting system (L), the payback period (T) in years is given by

$$T = \frac{\ln \left[1 + \frac{C(i-d)}{(G+L)} \right]}{\ln \left[\frac{1+i}{1+d} \right]}$$

As the battery lifetime (12.5 years) is shorter than the PV and LED lifetime (25 years), more than one battery will be used. The cost of subsequent future batteries must be discounted to the present value using the following **net present value** (NPV) factor, where τ is the number of years before the replacement battery is installed.

$$NPV = \frac{1}{(1+d)^\tau}$$

Given the current economic climate, it seems reasonable to assume that a typical value of d is 3%, and a typical value of i is 5%.

For the old lighting system, the *capital* cost of replacement luminaires must also be adjusted by using an appropriate NPV factor. This cost can be accounted for in the payback period by subtracting it from the upfront capital cost (C), thus creating a ‘modified upfront capital cost’. The manufacturing and disposal cost are not considered here, as this is not the responsibility of the building owner, else it is implicit in the capital costs.

It is more instructive to analyse the building as consisting of two separate floors, each using half the space available for PV generation on the south-facing roof. The question that we ask is ‘To what extent can half the roof power one floor?’ Although this particular house is a detached family home, it can equivalently be regarded as consisting of a terraced house being sub-divided into two separate apartments. Moreover, if each apartment consists of one or two people, then not all of the rooms on each floor will be occupied. It makes sense to only keep the lights on in the occupied room(s), where sensors are able to detect occupancy, with the corridor light always switched on for safety reasons. It is assumed that this configuration amounts to 50% of the apartment’s floor area being lit (In reality, suitable lighting controls will be required with carefully timed dimming, so that the on-off switching does not cause visual discomfort to the occupants), and a comparative analysis was done for 100% of the floor area being lit (no sensors) against 50% of the floor area being lit (with sensors).

The loads will depend on the type of luminaire we use, but a typical luminous efficacy for warm white LEDs (as of 2012) is 60 lm/W, and this is set to improve even further. For a house with 7.2 m x 8.2m floor area and 2.4 m room height (implying K-factor and Utilization factor of 1.17 and 0.9 respectively), one can use the lumen method to show that if the working plane requirement of 150 lux is to be satisfied using 7W ceiling-mounted luminaires, fourteen of these luminaires are required resulting in a total power requirement of 102.5 W. The old lighting system that is being replaced is a mains-powered CFL based system of efficacy 60 lm/W, lifetime of 5 years, and capital cost of £2 per 1000 lumens.

The area of the south-facing part of the roof is 34 m², and the whole of this area is to be fitted with PV panels, giving 17 m² of PV panels to provide power to each floor. It was assumed that there were no exterior obstructions to create shadowing. The PV efficiency is assumed to be 15% with a cost of £2000 per installed kWh, and the battery cost is 40p per kWh.

To predict the long term behaviour up to 2050, appropriate data for each component of the system must be obtained from various sources. For the PV efficiency, Swanson [22] provides a graph for 2005 and 2010, while Raugei [23] provides a graph for 2025 and 2050. The PV efficiencies for other years were estimated by interpolating between these two data sets. [23] and Breyer [16] provide the future prediction of the PV cost per Wh. The LED efficacy figures and capital costs per 1000 lm are provided by [24] and [25], where the figures for 2030, 2040, and 2050 have been extrapolated. Finally, the battery costs are found in [26]. Based on all this data, the spreadsheet was used to evaluate the payback time for the years 2000 to 2030 in steps of 5 years, then 2040 and

2050. It was not possible to consider the payback before 2000, as reliable data for warm-white LED lighting could not be obtained. Throughout the prediction, it is assumed that the cost reduction is mainly due to market and production improvements. If there are technological breakthroughs, then the prediction would have to be re-evaluated.

In predicting the future long term horizons, the following inputs described in table Table 2 were used:

Table 2. The cost and efficiency figures used to predict the long term payback trend

Year	PV efficiency	PV cost \$/kWh	LED efficacy	LED capital cost per 1000 lm	Battery cost \$/Wh
2000	10	5000	10	300	1.1
2005	12	3830	35	40	0.63
2010	14	2250	56	18	0.45
2015	16	1660	150	7.5	0.35
2020	18	1330	175	3	0.3
2025	20	1080	200	2	0.27
2030	21	1000	200	1	0.25
2040	21.5	830	200	1	0.24
2050	22	750	200	1	0.24

3. RESULTS AND DISCUSSION

If there are no occupancy sensors, then there is an average daily PV excess for 6 months of the year, as can be seen by the red line in Figure 2 (when the red line is above the horizontal axis there is a net PV excess, conversely below horizontal axis denotes grid use), and the battery size is determined by the maximum daily deficit PV energy in comparison to the load (green line), averaged over the whole year. It was found to be -1650 Wh; indeed shows that there was little variation in maximum daily deficit each month. Allowing for a factor of 1.5 to consider the non-ideal battery behaviour, this also resulted in a battery size exceeding 400 Ah, which (as of 2013) is beyond the range of typical devices on the market.

In the presence of occupancy sensors to light only 50% of the floor space, a more interesting picture emerges (Figure 3). There is an average daily PV excess for 8 months of the year, the annual average maximum daily deficit, is around 780 Wh, and the battery size is just under 200 Ah, which (as of 2013) is now well within the range of commercial devices on the market. It seems that by reducing the required lighting power, in this case by reducing the required floor area to be lit, we correspondingly reduce the required battery size.

Figure 4 explores how the future projections of PV and LED performance determine the payback period: As the LED luminous efficacy improves from 60 lm/W to 120 lm/W, the payback is expected to reduce by around 3 years. In comparison, if the PV cost per installed kW were to half, then so would the payback period. Indeed, once the PV cost drops to £500 per kW, then the payback period is of the order of a few years – similar to that contributed by the LED luminaires themselves.

The effect of solar tracking has not been considered here, but work by the authors is currently ongoing, and it is expected that this would increase the annual PV output by an extra 30-40%.

The long-term behavior up to 2050 (Figure 5) showed that there is a rapid reduction in the payback from 30 years to 10 years up to 2020, and then there is only a slight reduction in the payback of 7 years up to 2050. As can be inferred from Table 2, the PV and LED costs drop quite rapidly, but the battery cost reduction is more gradual. Thus it is expected that by 2020, the payback has shortened to encourage a large-scale uptake of the PV-Battery-LED systems.

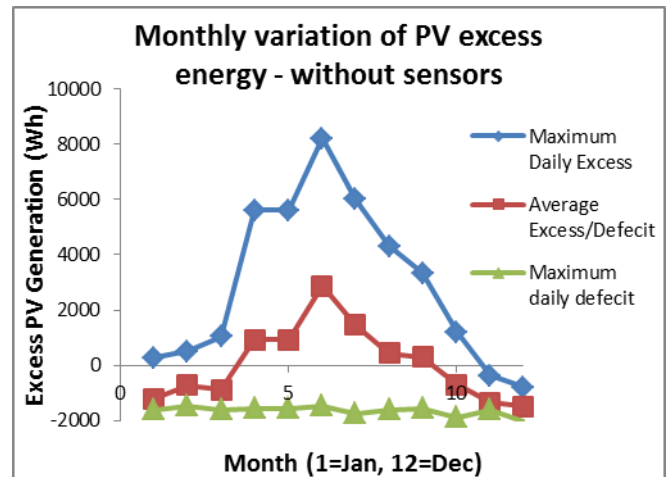


Figure 2. The monthly difference between the generated PV energy and load use if there are no occupancy sensors.

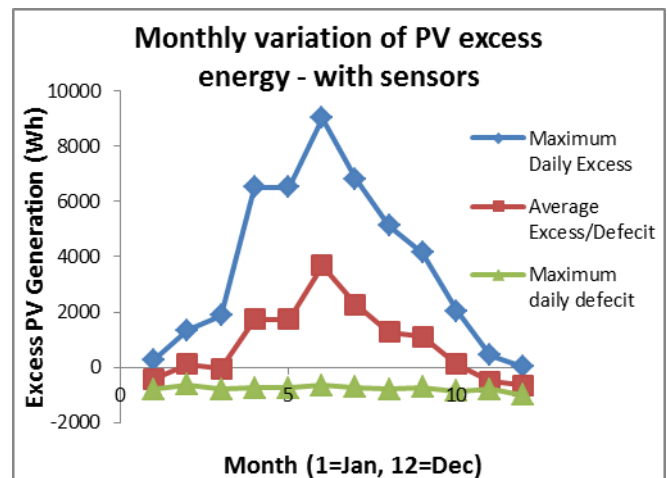


Figure 3. The monthly difference between the generated PV energy and load use when there are room occupancy sensors.

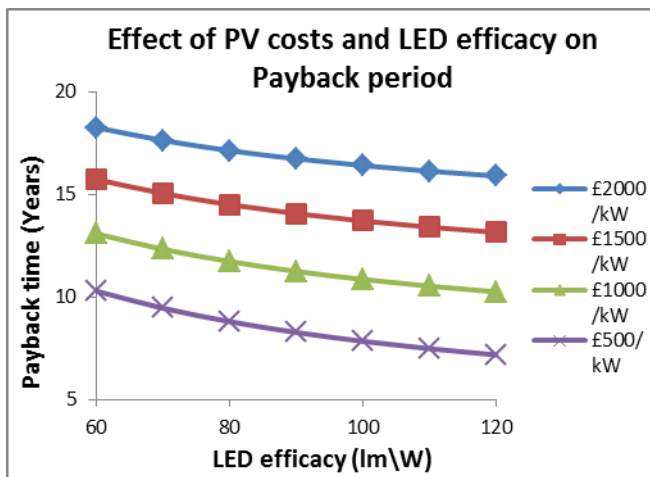


Figure 4. The effect of the PV costs and LED efficacy on the payback period/

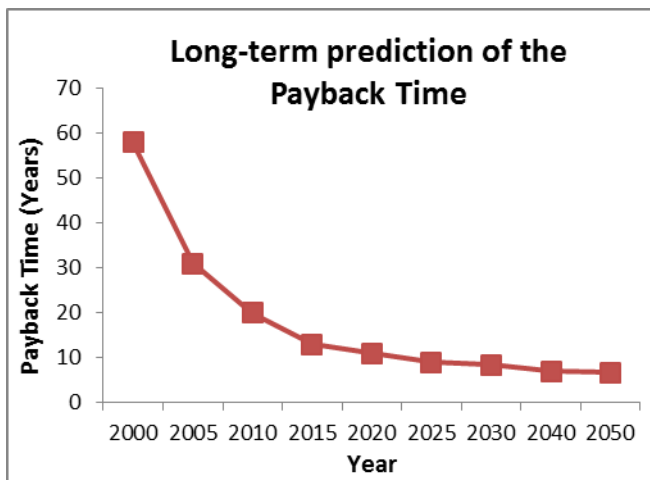


Figure 5. Long-term prediction of the payback-time

4. SUMMARY

The economic viability of PV-LED systems for interior lighting of residential and other small buildings have been investigated. It has been shown that for the typical system sizing and costs (as of 2013), the energy storage requirements are beyond the range of current commercial batteries. However, if it is desired that 50% less floor area needs to be lit for the given PV roof area, then commercial batteries of around 200 Ah can accommodate this storage requirement. Also, at present the payback period is dominated by the high PV cost, and this needs to reduce by at least half before reasonable payback times can be achieved. A long term projection has shown that by 2020, the payback will drop to a third of what it is in 2013, with a slightly further improvement expected by 2050. This is because over the next few years costs and efficiencies are set to improve significantly, and we should then begin to see large scale uptake of this technology. Further, this Solar-battery system can be used to power other DC applications, e.g. solar panels on garages powering electric cars.

5. ACKNOWLEDGMENTS

The authors would like to acknowledge the discussions with numerous other colleagues at the Welsh School of Architecture, and for the availability of a research grant from the Low Carbon Built Environment Project, supported by the European Regional Development Fund through the Welsh Government.

6. REFERENCES

- [1] Zhu, D., et al., *High-efficiency InGaN/GaN quantum well structures on large area silicon substrates*. *Physica Status Solidi (A) Applications and Materials Science*, 2012. **209**(1): p. 13-16.
- [2] Humphreys, C.J., *Solid-state lighting*. *MRS Bull*, 2008. **33**(04): p. 459-470.
- [3] Shailesh, K.R. and T.S. Raikar, *Application of RELUX Software in Simulation and Analysis of Energy Efficient Lighting Scheme*. *International Journal of Computer Applications*, 2010. **9**(7): p. 24-35.
- [4] Biber, C. *LED light emission as a function of thermal conditions*. 2008.
- [5] Parry, J., *Thermal Simulation Simplifies LED Luminaire Development*. Mentor Graphics - White Paper, 2011.
- [6] Dong, T. and N. Narendran. *Understanding heat transfer mechanisms in recessed LED luminaires*. 2009.
- [7] Jou, J.-H., et al., *Sunlight-style color-temperature tunable organic light-emitting diode*. *Applied Physics Letters*, 2009. **95**(1): p. 013307-013307-3.
- [8] Liu, G., et al., *Techno-economic simulation and optimization of residential grid-connected PV system for the Queensland climate*. *Renewable Energy*, 2012. **45**: p. 146-155.
- [9] Liu, G., et al., *Simulation and optimization of residential grid-connected PV system in Queensland, Australia*, 2012. p. 715-724.
- [10] Sastry, O.S., et al., *Development of white LED based PV lighting systems*. *Solar Energy Materials and Solar Cells*, 2010. **94**(9): p. 1430-1433.
- [11] Boeke, U., M. Wendt, and L. Yseboodt. *Combined solar and AC mains powered LED lighting system*. 2011.
- [12] Panguloori, R., P. Mishra, and U. Boeke. *Economic viability improvement of solar powered Indian rural banks through DC grids*. 2011.
- [13] Patel, A.R., et al., *Modeling and simulation of photovoltaic based LED lighting system*. *World Academy of Science, Engineering and Technology*, 2011. **73**: p. 647-651.
- [14] Pode, R., *Solution to enhance the acceptability of solar-powered LED lighting technology*. *Renewable and Sustainable Energy Reviews*, 2010. **14**(3): p. 1096-1103.
- [15] Leadbetter, J. and L.G. Swan, *Selection of battery technology to support grid-integrated renewable electricity*. *Journal of Power Sources*, 2012. **216**: p. 376-386.
- [16] Breyer C, *The Photovoltaic reality ahead: Terrawatt scale market potential powered by pico to gigawatt PV systems and enabled by high learning and growth rates*.

- 26th European Solar Energy Conference, Hamburg, Germany, pp. 5-9, 2010.
- [17] Braun, M., et al., *Photovoltaic self-consumption in Germany using Lithium-ion storage to increase self-consumed photovoltaic energy*. ISET, Kassel, 2009.
- [18] Albright, G., J. Edie, and S. Al-Hallaj, *A comparison of lead acid to lithium-ion in stationary storage applications*. Alternative Energy eMagazine Industry [online serial](April 12), 2012.
- [19] ESRAM, T. and P.L. Chapman, *Comparison of photovoltaic array maximum power point tracking techniques*. Energy conversion, IEEE transactions on, 2007. **22**(2): p. 439-449.
- [20] Huang, B.J., et al., *Development of high-performance solar LED lighting system*. Energy Conversion and Management, 2010. **51**(8): p. 1669-1675.
- [21] Kelly, N.A. and T.L. Gibson, *Improved photovoltaic energy output for cloudy conditions with a solar tracking system*. Solar Energy, 2009. **83**(11): p. 2092-2102.
- [22] Swanson, R.M. *Developments in silicon solar cells*. in *Electron Devices Meeting, 2007. IEDM 2007. IEEE International*. 2007. IEEE.
- [23] Raugei, M. and P. Frankl, *Life cycle impacts and costs of photovoltaic systems: Current state of the art and future outlooks*. Energy, 2009. **34**(3): p. 392-399.
- [24] Brodrick, J., *Accelerating the market adoption of LED lighting*. U.S. Department of Energy, 2012.
- [25] Azevedo, I.L., M.G. Morgan, and F. Morgan, *The transition to solid-state lighting*. Proceedings of the IEEE, 2009. **97**(3): p. 481-510.
- [26] Anderson, D.L., *An evaluation of current and future costs for lithium-ion batteries for use in electrified vehicle powertrains*, 2009, Duke University.