



# Common and Rare Variant Analysis in Early-Onset Bipolar Disorder Vulnerability

Stéphane Jamain<sup>1,2,3\*</sup>, Sven Cichon<sup>4,5,6,7</sup>, Bruno Etain<sup>1,2,3,8</sup>, Thomas W. Mühleisen<sup>5,6</sup>, Alexander Georgi<sup>9,10</sup>, Nora Zidane<sup>1,2,3</sup>, Lucie Chevallier<sup>1,2,3</sup>, Jasmine Deshommes<sup>1,2,3,11,12</sup>, Aude Nicolas<sup>1,2,3</sup>, Annabelle Henrion<sup>1,2,3</sup>, Franziska Degenhardt<sup>5,6</sup>, Manuel Mattheisen<sup>5,6,13</sup>, Lutz Priebe<sup>5,6</sup>, Flavie Mathieu<sup>1,2,3</sup>, Jean-Pierre Kahn<sup>3,14</sup>, Chantal Henry<sup>1,2,3,8</sup>, Anne Boland<sup>15</sup>, Diana Zelenika<sup>15</sup>, Ivo Gut<sup>15</sup>, Simon Heath<sup>15</sup>, Mark Lathrop<sup>15</sup>, Wolfgang Maier<sup>10</sup>, Margot Albus<sup>9</sup>, Marcella Rietschel<sup>9,10</sup>, Thomas G. Schulze<sup>9,16</sup>, Francis J. McMahon<sup>17</sup>, John R. Kelsoe<sup>18</sup>, Marian Hamshere<sup>19</sup>, Nicholas Craddock<sup>19</sup>, Markus M. Nöthen<sup>5,6</sup>, Frank Bellivier<sup>1,3,20,21</sup>, Marion Leboyer<sup>1,2,3,8</sup>

**1** Institut National de la Santé et de la Recherche Médicale U955, Psychiatrie Génétique, Créteil, France, **2** Université Paris-Est, Faculté de Médecine, Créteil, France, **3** Fondation FondaMental, Créteil, France, **4** Institute of Neuroscience and Medicine (INM-1), Research Center Juelich, Juelich, Germany, **5** Institute of Human Genetics, University of Bonn, Bonn, Germany, **6** Department of Genomics, Life and Brain Center, University of Bonn, Bonn, Germany, **7** Division of Medical Genetics, University Hospital and Department of Biomedicine, University of Basel, Basel, Switzerland, **8** Assistance Publique - Hôpitaux de Paris, Hôpital Henri Mondor-Albert Chenevier, Pôle de Psychiatrie, Créteil, France, **9** Department of Genetic Epidemiology in Psychiatry, Central Institute of Mental Health, Mannheim, Germany, **10** Department of Psychiatry, University of Bonn, Bonn, Germany, **11** Assistance Publique - Hôpitaux de Paris, Hôpital Henri Mondor-Albert Chenevier, Plate-forme de Ressources Biologiques, Créteil, France, **12** Institut National de la Santé et de la Recherche Médicale Centre d'Investigation Clinique 006, Hôpital Henri Mondor-Albert Chenevier, Pôle Recherche Clinique Santé Publique, Créteil, France, **13** Department of Biomedicine and the Centre for Integrative Sequencing, Aarhus University, Aarhus, Denmark, **14** Département de Psychiatrie et de Psychologie Clinique, Centre Hospitalier Universitaire de Nancy, Hôpital Jeanne-d'Arc, Toul, France, **15** Commissariat à l'Energie Atomique, Institut Génomique, Centre National de Génotypage, Evry, France, **16** Department of Psychiatry and Psychotherapy, University Medical Center, Georg-August-Universität, Göttingen, Germany, **17** Unit on the Genetic Basis of Mood and Anxiety Disorders, National Institute of Mental Health, National Institutes of Health, US Department of Health and Human Services, Bethesda, MD, United States of America, **18** Department of Psychiatry, University of California San Diego, La Jolla, CA, United States of America, **19** MRC Centre for Neuropsychiatric Genetics and Genomics, School of Medicine, Cardiff University, Heath Park, Cardiff, United Kingdom, **20** Assistance Publique - Hôpitaux de Paris, Groupe Hospitalier Lariboisière-F. Widal, Pôle de Psychiatrie, Paris, France, **21** Université Paris Diderot, Paris, France

## Abstract

Bipolar disorder is one of the most common and devastating psychiatric disorders whose mechanisms remain largely unknown. Despite a strong genetic contribution demonstrated by twin and adoption studies, a polygenic background influences this multifactorial and heterogeneous psychiatric disorder. To identify susceptibility genes on a severe and more familial sub-form of the disease, we conducted a genome-wide association study focused on 211 patients of French origin with an early age at onset and 1,719 controls, and then replicated our data on a German sample of 159 patients with early-onset bipolar disorder and 998 controls. Replication study and subsequent meta-analysis revealed two genes encoding proteins involved in phosphoinositide signalling pathway (*PLEKHA5* and *PLCXD3*). We performed additional replication studies in two datasets from the WTCCC (764 patients and 2,938 controls) and the GAIN-TGen cohorts (1,524 patients and 1,436 controls) and found nominal *P*-values both in the *PLCXD3* and *PLEKHA5* loci with the WTCCC sample. In addition, we identified in the French cohort one affected individual with a deletion at the *PLCXD3* locus and another one carrying a missense variation in *PLCXD3* (p.R93H), both supporting a role of the phosphatidylinositol pathway in early-onset bipolar disorder vulnerability. Although the current nominally significant findings should be interpreted with caution and need replication in independent cohorts, this study supports the strategy to combine genetic approaches to determine the molecular mechanisms underlying bipolar disorder.

**Citation:** Jamain S, Cichon S, Etain B, Mühleisen TW, Georgi A, et al. (2014) Common and Rare Variant Analysis in Early-Onset Bipolar Disorder Vulnerability. PLoS ONE 9(8): e104326. doi:10.1371/journal.pone.0104326

**Editor:** Chunyu Liu, University of Illinois at Chicago, United States of America

**Received:** July 29, 2013; **Accepted:** July 11, 2014; **Published:** August 11, 2014

**Copyright:** © 2014 Jamain et al. This is an open-access article distributed under the terms of the Creative Commons Attribution License, which permits unrestricted use, distribution, and reproduction in any medium, provided the original author and source are credited.

**Funding:** This work was supported by INSERM (Poste d'Accueil INSERM to B.E.), Assistance Publique des Hôpitaux de Paris, the Agence Nationale pour la Recherche (ANR NEURO2006 – Project MANAGE\_BPAD), the Centre National de Génotypage (Centre d'Energie Atomique, Evry, France) and the Réseau Thématique de Recherche et de Soins en Santé Mentale (Fondation FondaMental). The funders had no role in study design, data collection and analysis, decision to publish, or preparation of the manuscript.

**Competing Interests:** The authors have declared that no competing interests exist.

\* Email: stephane.jamain@inserm.fr

## Introduction

Numerous genome-wide association (GWA) studies have recently been performed on bipolar disorder (BD), but few signals were replicated and meta-analyses identified only a couple of associated genes, such as *CACNA1C*, *ODZ4* and *NCAN*, with a small effect size [1–4]. Although convergent evidences argue in favour of a role for these genes in vulnerability to BD [5–9], more extensive studies suggest it might be involved in other psychiatric disorders [3,10,11]. The difficulty to identify susceptibility genes specific to BD could be due to the ethnic heterogeneity, as a consequence of the huge number of patients and controls required to get genome-wide significant signals, or to the clinical and a genetic heterogeneity of the DSM-IV “bipolar disorder” entity.

In the current study, we focused on patients with BD selected with an early age at onset, a clinical characteristic known to identify a subgroup of patients with a higher morbid risk for BD in relatives [12–17]. We then compared these data to those observed in two previously published GWA studies of BD, conducted by the Wellcome Trust Case Control Consortium (WTCCC) [18] and the Genetic Association Information Network Bipolar Sample (GAIN-BP) [19]. Finally, we screened our regions of interest for rare variants, suspected to have a larger effect size, and suggested the importance of combined approaches in the identification of vulnerability genes to BD.

## Materials and Methods

### Ethics Statement

Protocols and procedures were approved by the research ethics board of the Pitié-Salpêtrière Hospital in Paris for the French sample and the ethics committees of the Faculties of Medicine at the Universities of Bonn and Mannheim/Heidelberg for the German sample. Written informed consent was obtained from all subjects prior to study participation.

### Sample

**French sample.** Two hundred and twenty patients of French descent with at least three grandparents from mainland France were collected through a French national network for mental health (Fondation FondaMental) in three university-affiliated psychiatry departments (Paris-Créteil, Bordeaux and Nancy) as previously described [12]. All patients met DSM-IV criteria [20] for BD type I (N = 172), type II (N = 46) or BD not otherwise specified (N = 2) before the age of 22. The age at onset was defined by the first mood episode (depressive, manic or hypomanic) and was retrospectively assessed using medical case notes and information obtained with the Diagnostic Interview for Genetic Studies (DIGS) [21]. The threshold of 22 was chosen on the basis of previous admixture analyses [16,22–25].

**German sample.** One hundred and sixty-seven German patients were recruited from consecutive admissions to the psychiatric inpatient units of the Central Institute of Mental Health in Mannheim and the Department of Psychiatry and Psychotherapy of the University of Bonn (BOMA bipolar study). These patients received a lifetime diagnosis of BD type I based on DSM-IV criteria and had an age at onset lower than 22.

**Control population.** Genotyping data from 1,823 French controls and 629 German controls were provided by the *Centre National de Génotypage* (CNG, Evry, France). These samples were previously collected and were not screened for psychiatric disorders. They have been genotyped for association and population studies as described elsewhere [26] and permission to use them were obtained from the original investigators. DNA from

380 additional German controls were collected in the above mentioned German hospitals. An additional sample of 293 unaffected French controls screened for personal history of psychiatric disorders using the DIGS has been screened for mutation in the *PLCXD3* exon 2, in order to determine the specificity of the p.R93H mutation.

### DNA extraction and genotyping

DNA was isolated from lymphocytes either directly from venous blood sample or after transformation by Epstein Barr virus. Isolation was performed by salting-out with saturated sodium chloride solution [27]. French and German cases were genotyped at the CNG, using HumanHap550 or Human 610-Quad BeadArrays and the Infinium II assay (Illumina, San Diego, CA, USA). Control samples were genotyped on HumanHap300 (N = 2,503) or on HumanHap550 BeadArrays (N = 380). In order to determine whether the use of multiple arrays might result in a population stratification, we performed a multidimensional scaling analysis based on pairwise identity-by-state distance between pairs of individuals. The good clustering of all individuals showed that there was no stratification due to the use of multiple arrays (Figure S1 in File S1).

### Quality control criteria

All samples were passed through the standard quality-control procedures followed at the CNG for GWA studies, as described elsewhere [26]. For the French population, the quality control was performed using the PLINK toolset [28] on a total of 317,131 common SNPs genotyped in 2,043 DNA samples (Table S1 in File S1). We removed monomorphic SNPs, as those with a minor allele frequency (MAF) lower than 0.01 and SNPs with a call rate lower than 0.97. We performed a missing chi-square test that compares, for each SNP, missingness between cases and controls and excluded SNPs with  $P < 10^{-3}$ . Then, we removed SNPs that did not show Hardy-Weinberg proportions in controls, using a significant threshold at  $P < 10^{-3}$ . In parallel, we removed male samples with more than 0.5% or female samples with less than 20% heterozygous markers on the X chromosome and individuals with a call rate lower than 0.97. We estimated the average genome-wide identity-by-state (IBS) sharing between individuals and analysed the clustering using a multidimensional scaling (MDS) plot. Hence, we excluded 15 individuals (3 cases and 12 controls) with a low level of identity. After pruning, the final data set consisted in 261,525 SNPs genotyped in 1,930 individuals (211 cases and 1,719 controls) that were used for association study. Identical quality control criteria were used for the replication sample from Germany (Table S1 in File S1) and MDS plot showed 6 controls to be removed. This led to a final data set of 288,167 SNPs and 1,157 individuals (159 patients and 998 controls).

### Association analysis

Basic case/control association analyses were performed using the PLINK software v1.07 [28]. A haplotype analysis was performed on the two most associated regions using sliding windows of two to five SNPs shifting by one SNP at a time. We tested for case/control haplotype-based association using a chi-square test with one degree of freedom. Only window with best *P*-values are reported for each region. Imputation data were based on the 3,967,651 SNPs genotyped in 90 subjects of the CEU population of the HapMap project (<http://www.hapmap.org>). Imputation was performed using PLINK and consisted in estimating the allele frequencies of an ungenotyped SNP based on its surrounding haplotypic background.

Genotyping data from the WTCCC [18] and the GAIN-TGen collection [19] were provided for BD patients with an age at onset lower than 22 and for controls. In the WTCCC, BD was defined according to Research Diagnostic Criteria [29] and included BD type I, type II, schizoaffective disorders and manic disorders. The WTCCC sample was genotyped on Affymetrix 500K array, containing only few SNPs in common with the Illumina arrays used in other samples. Thus, the genotype correlation data were obtained for SNPs within a 1 Mbp window, based on individuals and SNPs in the CEU HapMap filtered set (<http://www.hapmap.org>) and the 2,938 WTCCC control sample combined [18]. An association test between 764 early-onset patients and 2,938 controls was performed, using SNPs with a genotyped correlation higher than 0.2 with associated SNPs at  $P < 5 \times 10^{-5}$  identified through the meta-analysis.

All patients from the GAIN-TGen cohort met DSM-IV criteria for BD type I. Imputed data from the GAIN-TGen bipolar case-control sample [30] were obtained, using the MACH software with phased haplotypes from the 60 HapMap-CEU founders (release 22). Allele frequencies of 15 SNPs out of the 16 associated SNPs at  $P < 5 \times 10^{-5}$ , were compared between 1,524 patients with an early age at onset and 1,436 controls.

A flow chart summarizing all steps of the genetic analysis is shown on the Figure S2 in File S1.

### Detection of copy number variations

Copy number variations were detected by fluorescence level comparison through the chromosome, using the SnipPeep software (R. Toro, Pasteur Institute, France). The deletion in *PLCXD3* was confirmed by quantitative PCR analysis using one internal and two external couples of primers and Mesa Green qPCR master mix plus (Eurogentec, Liege, Belgium). PCR were performed and run in a Mastercycler ep realplex2S (Eppendorf, Hamburg, Germany) for the deleted patient and two unaffected controls, known to have no deletion in the regions under study. Each real-time PCR was performed in triplicate and assessed by comparing Ct at a determined threshold between the three amplicons and the three individuals.

### Mutation screening in PLCXD3

The *PLCXD3* coding regions were amplified for 334 French subjects with BD, sequenced by the Sanger's method using the BigDye terminator v3.1 cycle sequencing kit (Life Technologies, Carlsbad, CA, U.S.A.) and run on a 16-Capillary ABI PRISM 3130xl genetic analyzer. The *PLCXD3* exon 2 was sequenced for 293 unaffected French controls. All primers used for PCR amplifications and sequence analyses are available on request.

## Results

### Analysis of a French cohort

We carried out an association study on 211 patients with early-onset BD of French origin and 1,719 matched controls, who have been genotyped on an Illumina platform with 261,525 single nucleotide polymorphisms (SNPs) passing quality control. The estimation of an inflation factor [31] showed a good genetic homogeneity in our sample ( $\lambda = 1.03$ ), suggesting that no correction for genomic control was needed. According to the genome-wide significance threshold of  $P = 5 \times 10^{-8}$ , no significant difference in allele frequencies was observed in our sample, but 17 SNPs showed a nominal  $P < 5 \times 10^{-5}$  (Table S2 in File S1), suggesting these loci may be associated with vulnerability to early-onset forms of BD. Interestingly, the lowest  $P$ -value (*rs10096683*,  $P = 4.11 \times 10^{-6}$ , OR = 2.26), was observed for a SNP located on

chromosome 8p22, a region that has previously been associated with schizophrenia [32–35] and suicide behaviour in patients with recurrent major depression [36].

### Replication on a German cohort

Next, we selected 14,037 SNPs with a  $P < 0.05$  to perform a replication study on an independent sample of 159 German subjects with an early-onset BD and 998 matched controls (Table S1 in File S1). Again, a good genetic homogeneity ( $\lambda = 1.04$ ) was observed after quality control for this sample. Out of the 14,037 SNPs previously selected, 13,734 were genotyped in the German sample, and 739 showed a  $P < 0.05$ , showing a significant over-representation ( $P < 0.03$ ) of nominally significant  $P$ -values. The most associated SNP in the German sample was located on chromosome 12 upstream to the *PLEKHA5* gene (*rs2970836*,  $P = 5.3 \times 10^{-6}$ , OR = 1.76).

### Meta-analysis on the French and the German cohorts

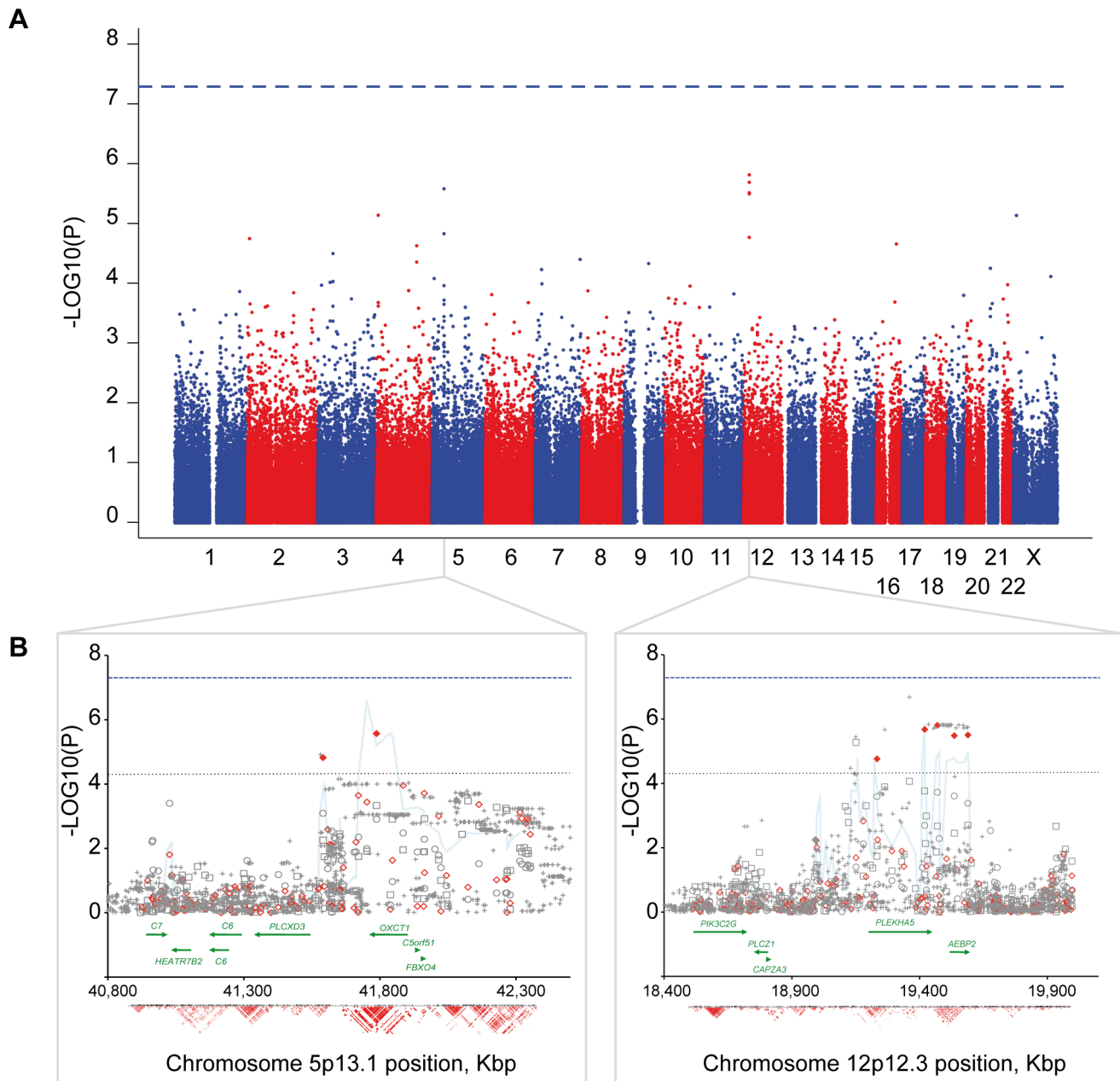
We subsequently performed a meta-analysis, combining data from the French and the German cohorts, yielding a sample of 370 patients with early-onset BD and 2,717 controls. Again, no locus reaches the genome-wide significant threshold. The largest difference in allele frequencies between cases and controls was observed for chromosome 12 (*rs2961365*,  $P_{\text{meta}} = 1.6 \times 10^{-6}$ , OR<sub>meta</sub> = 1.57) with no evidence of heterogeneity between the two cohorts ( $Q = 0.94$ , 1 degree of freedom,  $I^2 = 0$ ). In this region, 5 SNPs showed a difference in allele frequencies at  $P < 5 \times 10^{-5}$  in 355 Kbp (Figure 1, Table 1). These SNPs span two genes, *PLEKHA5* and *AEBP2*. The second strongest association with no heterogeneity ( $Q = 0.59$ , 1 degree of freedom,  $I^2 = 0$ ) was observed for chromosome 5p13 (*rs10512793*,  $P_{\text{meta}} = 2.7 \times 10^{-6}$ , OR<sub>meta</sub> = 1.61), in which two SNPs, spaced by 196 Kbp, showed a difference in allele frequencies at  $P < 5 \times 10^{-5}$  (Figure 1, Table 1). These two SNPs were located in the *OXCT1* gene, and upstream to *PLCXD3*. In order to further explore the associated peak in these two regions, we used a three-SNP sliding window and performed a haplotype analysis. Whereas no further significant difference, as compared to single SNP analysis, was observed on chromosome 12p12, a more significant difference between patients and controls was observed on chromosome 5p13 for the combination of *rs624097-rs316762-rs10512793*, for which an overall  $P_{\text{meta}} = 2.6 \times 10^{-7}$  was observed (Figure 1).

### Imputation data

In order to refine the association signal in these two regions, we imputed data for ungenotyped SNPs in the French and the German cohorts based on the 3.9 million SNPs genotyped in the CEU population of the HapMap project. The results of the two populations were then combined to perform an association study. After imputation, we observed an increased signal for chromosome 12 with the lowest estimated  $P$ -value for *rs10743315* ( $P = 2.1 \times 10^{-7}$ , OR = 1.61) located in *PLEKHA5* (Figure 1). On the contrary for chromosome 5, the lowest  $P$ -value was observed for the genotyped SNP, *rs10512793*.

### Replication studies on the WTCCC and the GAIN-TGen cohorts

We analysed the top-16 SNPs ( $P < 5 \times 10^{-5}$ ) out of the meta-analysis in two additional samples of early-onset bipolar patients, already genotyped on different platforms through the WTCCC and the GAIN and performed a mega-analysis including the four samples (Table S3 in File S2). Only 4 SNPs, genotyped in a subsample of 764 early-onset bipolar patients and 2,938 matched



**Figure 1. Genome-wide association results and detailed peak association regions.** (A) Manhattan plot of the meta-analysis performed on early-onset bipolar patients and controls from France and Germany. Physical position is shown along the x axis and  $-\log_{10}(P\text{-value})$  is shown along the y axis. (B) Detail of the two most associated regions on chromosomes 5p13 and 12p12. Allele frequency differences are represented by  $-\log_{10}(P\text{-values})$  for the French (open grey circles), the German (open grey squares) and the meta- (open red diamonds) analyses. Grey crosses represent  $-\log_{10}(P\text{-value})$  for imputed ungenotyped SNPs. The most associated SNP for each region is shown with orange circle. On chromosome 5p13, the lowest  $P\text{-value}$  ( $P = 2.1 \times 10^{-7}$ ) was observed for an imputed SNP (*rs10743315*). On chromosome 12p12, the lowest  $P\text{-value}$  ( $P = 2.6 \times 10^{-7}$ ) was observed for a three-SNPs window haplotype (light blue line) located downstream to *OXCT1* and upstream to *PLCXD3* (*rs624097-rs316762-rs10512793*). The genome-wide significant threshold ( $P = 5 \times 10^{-8}$ ) is indicated by the blue dash line and the dot black line shows a threshold at  $P = 5 \times 10^{-5}$ . The largest differences in allele frequencies are represented with filled diamonds. Gene position and annotation (<http://genome.ucsc.edu/>) are symbolised by green arrows. Linkage disequilibrium ( $r^2$ ) estimated according to HapMap CEU population SNPs (release 3) is symbolised in the bottom part of each figure. Darker red indicates higher values.  
doi:10.1371/journal.pone.0104326.g001

controls from the United Kingdom out of the WTCCC, were either directly or in strong linkage disequilibrium ( $r^2 > 0.99$ ) with SNPs genotyped in the WTCCC sample. None of them showed a nominal  $P\text{-value}$  ( $P < 0.05$ ). However, two SNPs on chromosome 5p13 in lower linkage disequilibrium ( $r^2 = 0.65$ ) with *rs822135* showed a nominal  $P\text{-value}$  (*rs625487*,  $P = 0.02$ , OR = 1.15 and

*rs633407*,  $P = 0.02$ , OR = 1.15) (data not shown). Both were located approximately 55 Kbp upstream to *PLCXD3* and 165 Kbp downstream to *OXCT1*. In addition, one SNP (*rs2565666*), located on chromosome 12p12, 21 Kbp downstream to *PLEKHA5* and 42 Kbp upstream to *AEBP2*, also showed a nominal  $P\text{-value}$  (*rs2565666*,  $P = 0.03$ , OR = 1.22) (data not shown). We

**Table 1.** Regions associated at  $P < 5 \times 10^{-5}$  with early-onset BD in meta-analysis.

CHR	SNP	Position <sup>a</sup> (bp)	French sample				German sample				Meta-analysis				
			Allele	Allele frequency in BD patients	Allele frequency in controls	P	OR	Allele frequency in early-onset BD patients	Allele frequency in controls	P	OR	P <sub>meta</sub>	OR <sub>meta</sub>	Q	I <sup>2</sup>
12	rs2961365	19,469,374	T	0.23	0.16	$1.88 \times 10^{-04}$	1.58	0.23	0.16	$2.12 \times 10^{-03}$	1.56	$1.58 \times 10^{-6}$	1.57	0.94	0
12	rs3752823	19,419,905	A	0.15	0.10	$2.03 \times 10^{-03}$	1.58	0.16	0.09	$1.70 \times 10^{-04}$	1.89	$2.09 \times 10^{-6}$	1.71	0.43	0
5	rs10512793	41,787,459	C	0.19	0.13	$1.24 \times 10^{-03}$	1.54	0.20	0.13	$4.64 \times 10^{-04}$	1.72	$2.68 \times 10^{-6}$	1.61	0.59	0
12	rs2900433	19,588,898	T	0.23	0.16	$4.13 \times 10^{-04}$	1.55	0.23	0.16	$2.01 \times 10^{-03}$	1.57	$3.13 \times 10^{-6}$	1.56	0.96	0
12	rs7305762	19,535,793	G	0.23	0.16	$2.46 \times 10^{-04}$	1.57	0.23	0.16	$3.53 \times 10^{-03}$	1.53	$3.26 \times 10^{-6}$	1.55	0.89	0
4	rs12500759	7,760,780	T	0.21	0.29	$7.54 \times 10^{-04}$	0.66	0.23	0.32	$2.76 \times 10^{-03}$	0.66	$7.40 \times 10^{-6}$	0.66	1.00	0
X	rs952076	13,856,877	T	0.20	0.28	$2.61 \times 10^{-03}$	0.65	0.19	0.29	$5.94 \times 10^{-04}$	0.56	$7.48 \times 10^{-6}$	0.61	0.51	0
5	rs822135	41,590,915	A	0.25	0.33	$8.12 \times 10^{-04}$	0.68	0.26	0.34	$5.54 \times 10^{-03}$	0.69	$1.50 \times 10^{-5}$	0.68	0.94	0
12	rs4764470	19,233,420	A	0.27	0.20	$2.55 \times 10^{-04}$	1.53	0.25	0.20	$1.84 \times 10^{-02}$	1.39	$1.73 \times 10^{-5}$	1.47	0.60	0
2	rs7608161	9,668,060	G	0.34	0.27	$2.90 \times 10^{-03}$	1.38	0.33	0.25	$1.68 \times 10^{-03}$	1.50	$1.82 \times 10^{-5}$	1.43	0.64	0
16	rs7185187	69,315,056	T	0.11	0.06	$5.99 \times 10^{-04}$	1.80	0.12	0.07	$9.63 \times 10^{-03}$	1.65	$2.24 \times 10^{-5}$	1.73	0.74	0
4	rs6857347	139,528,195	G	0.43	0.50	$6.80 \times 10^{-03}$	0.75	0.41	0.51	$7.62 \times 10^{-04}$	0.66	$2.40 \times 10^{-5}$	0.71	0.41	0
3	rs13091545	52,352,334	G	0.25	0.18	$1.73 \times 10^{-04}$	1.57	0.20	0.16	$4.64 \times 10^{-02}$	1.35	$3.24 \times 10^{-5}$	1.48	0.44	0
7	rs4716990	155,616,697	G	0.37	0.29	$6.12 \times 10^{-04}$	1.45	0.36	0.29	$1.99 \times 10^{-02}$	1.34	$4.04 \times 10^{-5}$	1.40	0.66	0
4	rs12505439	139,521,194	A	0.35	0.29	$9.91 \times 10^{-03}$	1.32	0.40	0.30	$1.05 \times 10^{-03}$	1.50	$4.48 \times 10^{-5}$	1.40	0.44	0
9	rs3739657	85,177,755	C	0.28	0.36	$2.21 \times 10^{-03}$	0.71	0.31	0.39	$6.87 \times 10^{-03}$	0.70	$4.74 \times 10^{-5}$	0.71	0.98	0

OR, odds ratio; Q, P-value for Cochran's Q statistic; I<sup>2</sup>, heterogeneity index.  
<sup>a</sup>position from the short arm telomere based on Hg18.  
 doi:10.1371/journal.pone.0104326.t001

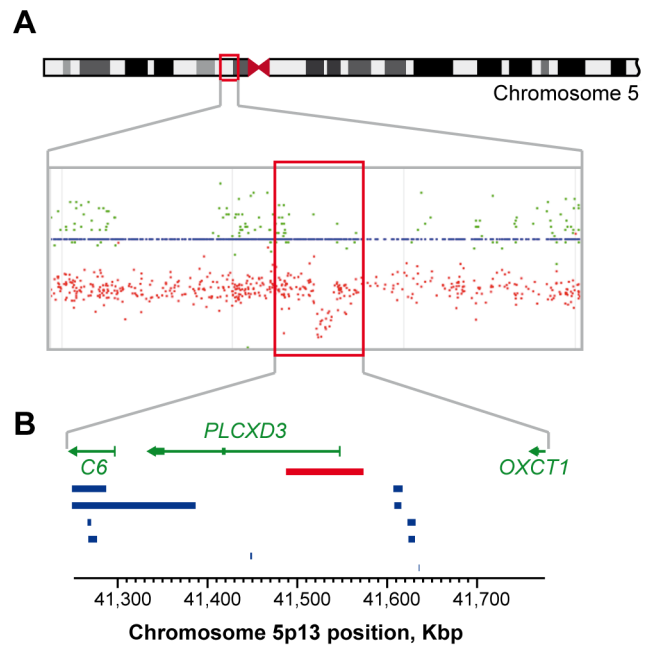
also compared a sample of 1,524 early-onset bipolar patients with 1,436 controls out of the combined GAIN-TGen cohorts. None out of the 15 tested SNPs showed a nominal  $P$ -value (Table S3 in File S2). The mega-analysis showed a high heterogeneity between the samples from France and Germany and the two samples from U.K. and U.S.A. This analysis resulted in a low signal on chromosomes 5p13 and 12p12 (*rs10512793*,  $P_{\text{mega}} = 5.05 \times 10^{-2}$ ,  $\text{OR}_{\text{mega}} = 1.38$  and *rs3752823*,  $P_{\text{mega}} = 5.79 \times 10^{-2}$ ,  $\text{OR}_{\text{mega}} = 1.43$ , respectively). The strongest association observed in the mega-analysis for SNPs tested in at least three of the four populations was observed on chromosome 7q36.3 in a gene desert (*rs4716990*,  $P_{\text{mega}} = 3.78 \times 10^{-2}$ ,  $\text{OR}_{\text{mega}} = 1.25$ ).

### Structural abnormalities in region of interest

Fluorescence level of genotyped SNPs was only available for a subsample of early-onset patients of French and German origin ( $N = 321$ ). We analysed this fluorescence level in the two 1.5 Mbp regions of interest on chromosome 5p13 and 12p12. On chromosome 5p13, we identified, in a French patient who manifested a first mood episode by the age of 17, a 90-Kbp deletion removing the *PLCXD3* promoter region as well as the first coding exon of the gene (Figure 2), whereas no copy number variation has been previously reported in this region in the database of genomic variations (<http://projects.tcag.ca/variation/>). Although DNA was not available for first-degree relatives of this patient, the deletion was confirmed using quantitative PCR analysis (data not shown). In order to determine whether independent family specific mutations might be frequently found in bipolar patients, we screened all coding exons of *PLCXD3* in 334 French subjects (204 patients with early-onset BD and 130 patients with late-onset BD). Three synonymous variations (p.V58, p.A130 and p.P251) were found in these patients, and one amino acid change (p.R93H) was identified in one subject with early-onset BD type I and obsessive compulsive disorder. This variation was not found in 293 unaffected matched controls. This amino acid is highly conserved through evolution and, according to PolyPhen-2 [37], this variation is predicted to strongly affect the function of the protein. Further analysis of the available DNA sample in this family showed that this variation was transmitted from the father (Figure S3 in File S1). The patient manifested first mood symptoms by the age of 19. Although his father did not meet criteria for mood disorder according to DSM-IV, his first cousin manifested major depressive disorder by the age of 65. Unfortunately, no DNA was available for this subject.

### Discussion

The important clinical heterogeneity of BD has probably hampered the identification of vulnerability genes so far. After tumultuous starts, GWA studies have enabled the identification of robust and replicable genetic findings of weak effect, in regions of *CACNA1C*, *ODZ4* and *NCAN*, but without disease specificity [4]. In this study, we conducted a genome-wide approach on a highly heritable phenotype, focusing on patients with an early age at onset. Based on the genotyping data of 261,525 SNPs, we did not identify SNPs that reached the genome-wide significant threshold in our patients and controls of French origin. This was most likely due to the small sample size of our cohort. We calculated the statistical power of our study, using the CaTS software [38] and estimated that we had 80% chance to detect only SNPs with a genetic risk factor higher than 1.7 (Figure S4 in File S1). However, recent data from larger cohort studies showed a polygenic component in BD [3,39], consistent with a combine vulnerability resulting from many variants of weak effect. We thus conducted a replication study on a German cohort of patients with early-onset



**Figure 2. Copy number variation identified on chromosome 5p13.** (A) Fluorescence level of SNPs of the region for the deleted patient visualized using SnipPeep. Red dots represent fluorescence level of SNPs and green dots correspond to the SNP heterozygosity. (B) Chromosomal position of the deletion. Gene position and annotation (<http://genome.ucsc.edu/>) are symbolised by green arrows. Deletions reported in the Database of Genomic Variants (<http://projects.tcag.ca/variation/>) are represented with blue bars. No duplication has been reported in this region. A red bar represents the deletion identified in the patient with early-onset BD. doi:10.1371/journal.pone.0104326.g002

BD and performed a subsequent meta-analysis. Although it did not reach the genome-wide significant threshold, the most associated region in our meta-analysis was located on chromosome 12p12. This region has been previously associated with bipolar disorder [40–42] and more specifically when patients had an early age at onset of mania [40]. Five SNPs in this region showed a difference in allele frequencies between patients and controls, spanning two genes, *PLEKHA5* and *AEBP2*. The genetic refinement using imputed data showed the lowest  $P$ -value for a SNP located in *PLEKHA5* (*rs10743315*,  $P = 2.1 \times 10^{-7}$ ). *PLEKHA5* encodes a protein containing a pleckstrin homology domain, which interacts with phosphatidylinositol 3-phosphate [43]. Few elements are known about this gene except its ubiquitous pattern of expression, including foetal and adult brains. Nevertheless, there is compelling evidence for the implication of the phosphatidylinositol signalling pathway in the etiopathogeny of BD and the two most effective mood stabilisers for BD (lithium and valproate) directly inhibit this pathway [44]. Further exploration of response to mood stabilizer in regards to the *PLEKHA5* genotypes might help in understanding the difference observed according to the patients' age at onset [15].

The second most associated region in our meta-analysis was located on chromosome 5p13. In this region, the highest difference in allele frequencies between patients with early-onset BD and controls was observed for *rs10512793*. This SNP was located in *OXCT1*, which encodes a 3-oxoacid CoA transferase 1. This enzyme catalyzes the reversible transfer of CoA from succinyl-CoA to acetoacetate and is thus the first step of ketone body utilization, the main source of lipid-derived energy for the brain



[45]. Mutations in this gene are associated with succinyl CoA:3-oxoacid CoA transferase (SCOT) deficiency, characterised by episodes of severe ketoacidosis [46,47], which can also emerge during treatment with some atypical antipsychotics [48]. However, the haplotype analysis of this region suggested that the associated peak might be located more likely downstream to *OXCT1* and upstream to *PLCXD3*. This result is consistent with the 90 Kbp-deletion reported in one of the French patients and that removed the promoter region and the first coding exon of *PLCXD3*. Further exploration of this gene revealed a mutation predicting to change the amino acid sequence of the protein (p.R93H) and transmitted from his father, who had a first cousin with major depressive disorder. Interestingly, this gene encodes a phosphatidylinositol-specific phospholipase C, strengthening the involvement of the phosphoinositide-signalling pathway in vulnerability to BD. Note that tricyclic antidepressants (e.g. desipramine), which are known to induce rapid cycling or induce manic or hypomanic episodes in some patients with BD [49], stimulate phospholipase C activity and the production of the second messenger inositol 1,4,5-trisphosphate [50]. In addition, experiments performed using rat cultured hippocampal neurons revealed that desipramine rapidly enhanced the spontaneous SNAP25-dependent vesicular release of glutamate [51]. This Ca<sup>2+</sup> dependent mechanism is consistent with our previously reported association between *SNAP25* and early-onset BD [12] and with the strong associations observed between SNPs located in *CACNA1C* and BD [1,3].

The main limitation of our study is not to reach the stringent genome-wide threshold. Although this might translate an absence of common genetic variations for a clinical subgroup based on an early age at onset, this is also a direct consequence of the small sample size and the loss of power inherent to the subphenotype analysis. Similar study on larger sample should be performed to confirm our data and valid the relevance of such approach. Nevertheless, results observed in our French subsample with an early age at onset have been replicated in a German sample and supported by the data from the WTCCC with similar phenotype criteria.

Another possible cause of the loss of power in our analysis is the categorical exploration of the age at onset. Despite a widely valid threshold for the age at onset [16,17,22–25], a continuous exploration of this variable would allow to determine whether specific loci might lead to various age at onset, which would result, under multiplicative or additive models, in an overall early age-at-onset in patients. Such hypothesis is supported by the recent observation of the International Schizophrenia Consortium, which showed the molecular genetic evidence for a substantial polygenic component to the risk of BD involving thousands of common alleles of very small effect [39]. Similar analysis should thus be performed according to the patients' age at onset, but this should require larger samples for the study and the replication analysis.

In conclusion, although we did not reach the genome-wide significant threshold in our association study, we report here convergent data between our GWA study on early onset BD, the

structural abnormality observed in one patient and a missense mutation reported in one family with early-onset BD. The difficulties to reach the stringent genome-wide significant threshold suggest that larger samples should be included, which will also help in better defining the most convenient strategy to take into account the age at onset of patients. Although the current nominally significant findings should be interpreted with caution and need replication in independent cohorts, our results displayed that the combined exploration of common and rare variants in BD can reveal identical pathways suggesting both approaches should be systematically used in further genetic exploration of this disorder. Using these approaches, we provided evidence that variations in phosphoinositide secondary messenger signalling pathway, and for the first time, that the *PLEKHA5* and *PLCXD3* genes, might confer vulnerability to early-onset BD. Further exploration of these mechanisms might be used to better identify markers of prognosis and help the development of innovative treatment for these severe forms of the disease.

## Supporting Information

**File S1 Contains Tables S1-S2 and Figures S1-S4.**  
(PDF)

**File S2 Contains Table S3.**  
(XLSX)

## Acknowledgments

We thank bipolar patients and controls for their participation.

We acknowledge the Wellcome Trust Case Control Consortium (www.WTCCC.org.uk), the Genetic Association Information Network (www.fnih.org) and the Translational Genomics Research Institute (www.tgen.org), their memberships and funders, for generating and publishing data used for replication.

We thank E. Abadie, the Cochin Hospital cell library (Prof. J. Chelly), the Clinical Investigation Centre (Dr. O. Montagne) and the Biological Resources Centre (Prof. B. Ghaleh) of Mondor Hospital, and blood donor centre (Drs. J.L. Beaumont and B. Mignen, EFS, Créteil) for technical assistance.

We thank B. Cochet, R. Cohen, O. Elgrabli, A. Raust and L. Zanouy for their participation in the clinical evaluation of patients.

We thank Dr. R. Toro for the SnipPeep software and Prof. T. Bourgeron for helpful discussion and comments on the manuscript.

The team of M. Leboyer is part of the École des Neurosciences de Paris Ile-de-France network, member of the Bio-Psy Labex and member of the European Network of Bipolar Research Expert Centres (ENBREC).

## Author Contributions

Conceived and designed the experiments: SJ M. Leboyer FB BE M. Lathrop. Performed the experiments: SJ LC JD AN AH FD LP AB. Analyzed the data: SJ SC BE TWM NZ LC FD MM LP FM DZ IG SH TGS MH. Contributed reagents/materials/analysis tools: BE AG JPK CH IG SH M. Lathrop WM MA MR TGS EJM JRK NC MMN FB M. Leboyer. Wrote the paper: SJ SC BE TWM TGS MH NC FB M. Leboyer.

## References

1. Ferreira MA, O'Donovan MC, Meng YA, Jones IR, Ruderfer DM, et al. (2008) Collaborative genome-wide association analysis supports a role for ANK3 and CACNA1C in bipolar disorder. *Nat Genet* 40: 1056–1058.
2. Cichon S, Muhleisen TW, Degenhardt FA, Mattheisen M, Miro X, et al. (2011) Genome-wide association study identifies genetic variation in neurocan as a susceptibility factor for bipolar disorder. *Am J Hum Genet* 88: 372–381.
3. Psychiatric GWAS Consortium Bipolar Disorder Working Group (2011) Large-scale genome-wide association analysis of bipolar disorder identifies a new susceptibility locus near ODZ4. *Nat Genet* 43: 977–983.
4. Craddock N, Sklar P (2013) Genetics of bipolar disorder. *Lancet* 381: 1654–1662.
5. Kempton MJ, Ruberto G, Vassos E, Tatarelli R, Girardi P, et al. (2009) Effects of the CACNA1C risk allele for bipolar disorder on cerebral gray matter volume in healthy individuals. *Am J Psychiatry* 166: 1413–1414.
6. Wessa M, Linke J, Witt SH, Nieratschker V, Esslinger C, et al. (2010) The CACNA1C risk variant for bipolar disorder influences limbic activity. *Mol Psychiatry* 15: 1126–1127.
7. Roussos P, Giakoumaki SG, Georgakopoulos A, Robakis NK, Bitsios P (2011) The CACNA1C and ANK3 risk alleles impact on affective personality traits and startle reactivity but not on cognition or gating in healthy males. *Bipolar Disord* 13: 250–259.

8. Green EK, Hamshere M, Forty L, Gordon-Smith K, Fraser C, et al. (2013) Replication of bipolar disorder susceptibility alleles and identification of two novel genome-wide significant associations in a new bipolar disorder case-control sample. *Mol Psychiatry* 18: 1302–1307.
9. Heinrich A, Lourdasamy A, Tzschoppe J, Vollstadt-Klein S, Buhler M, et al. (2013) The risk variant in ODZ4 for bipolar disorder impacts on amygdala activation during reward processing. *Bipolar Disord* 15: 440–445.
10. Green EK, Grozeva D, Jones I, Jones L, Kirov G, et al. (2010) The bipolar disorder risk allele at CACNA1C also confers risk of recurrent major depression and of schizophrenia. *Mol Psychiatry* 15: 1016–1022.
11. Moskvina V, Craddock N, Holmans P, Nikolov I, Pahwa JS, et al. (2009) Genome-wide analyses of genome-wide association data sets: evidence for multiple common risk alleles for schizophrenia and bipolar disorder and for overlap in genetic risk. *Mol Psychiatry* 14: 252–260.
12. Etain B, Dumaine A, Mathieu F, Chevalier F, Henry C, et al. (2010) A SNAP25 promoter variant is associated with early-onset bipolar disorder and a high expression level in brain. *Mol Psychiatry* 15: 748–755.
13. Etain B, Mathieu F, Rietschel M, Maier W, Albus M, et al. (2006) Genome-wide scan for genes involved in bipolar affective disorder in 70 European families ascertained through a bipolar type I early-onset proband: supportive evidence for linkage at 3p14. *Mol Psychiatry* 11: 685–694.
14. Grigoriou-Serbanescu M, Martinez M, Nothen MM, Grinberg M, Sima D, et al. (2001) Different familial transmission patterns in bipolar I disorder with onset before and after age 25. *Am J Med Genet* 105: 765–773.
15. Leboyer M, Henry C, Paillere-Martinot ML, Bellivier F (2005) Age at onset in bipolar affective disorders: a review. *Bipolar Disord* 7: 111–118.
16. Bellivier F, Etain B, Malafosse A, Henry C, Kahn JP, et al. (2014) Age at onset in bipolar I affective disorder in the USA and Europe. *World J Biol Psychiatry* 15: 369–376.
17. Geoffroy PA, Etain B, Scott J, Henry C, Jamain S, et al. (2013) Reconsideration of bipolar disorder as a developmental disorder: importance of the time of onset. *J Physiol Paris* 107: 278–285.
18. The Wellcome Trust Case Control Consortium (2007) Genome-wide association study of 14,000 cases of seven common diseases and 3,000 shared controls. *Nature* 447: 661–678.
19. Smith EN, Bloss CS, Badner JA, Barrett T, Belmonte PL, et al. (2009) Genome-wide association study of bipolar disorder in European American and African American individuals. *Mol Psychiatry* 14: 755–763.
20. American Psychiatric Association (1994) Diagnostic and Statistical Manual of Mental Disorders. Washington, DC: American Psychiatric Press.
21. Nurnberger JI Jr, Blehar MC, Kaufmann CA, York-Cooler C, Simpson SG, et al. (1994) Diagnostic interview for genetic studies. Rationale, unique features, and training. NIMH Genetics Initiative. *Arch Gen Psychiatry* 51: 849–859; discussion 863–844.
22. Bellivier F, Golmard JL, Henry C, Leboyer M, Schurhoff F (2001) Admixture analysis of age at onset in bipolar I affective disorder. *Arch Gen Psychiatry* 58: 510–512.
23. Bellivier F, Golmard JL, Rietschel M, Schulze TG, Malafosse A, et al. (2003) Age at onset in bipolar I affective disorder: further evidence for three subgroups. *Am J Psychiatry* 160: 999–1001.
24. Lin PI, McInnis MG, Potash JB, Willour V, MacKinnon DF, et al. (2006) Clinical correlates and familial aggregation of age at onset in bipolar disorder. *Am J Psychiatry* 163: 240–246.
25. Manchia M, Lampus S, Chilloti C, Sardu C, Ardu R, et al. (2008) Age at onset in Sardinian bipolar I patients: evidence for three subgroups. *Bipolar Disord* 10: 443–446.
26. Heath SC, Gut IG, Brennan P, McKay JD, Bencko V, et al. (2008) Investigation of the fine structure of European populations with applications to disease association studies. *Eur J Hum Genet* 16: 1413–1429.
27. Miller SA, Dykes DD, Polesky HF (1988) A simple salting out procedure for extracting DNA from human nucleated cells. *Nucleic Acids Res* 16: 1215.
28. Purcell S, Neale B, Todd-Brown K, Thomas L, Ferreira MA, et al. (2007) PLINK: a tool set for whole-genome association and population-based linkage analyses. *Am J Hum Genet* 81: 559–575.
29. Spitzer RL, Endicott J, Robins E (1978) Research diagnostic criteria: rationale and reliability. *Arch Gen Psychiatry* 35: 773–782.
30. Manolio TA, Rodriguez LL, Brooks L, Abecasis G, Ballinger D, et al. (2007) New models of collaboration in genome-wide association studies: the Genetic Association Information Network. *Nat Genet* 39: 1045–1051.
31. Devlin B, Roeder K (1999) Genomic control for association studies. *Biometrics* 55: 997–1004.
32. Pulver AE, Lasseter VK, Kasch L, Wolyniec P, Nestadt G, et al. (1995) Schizophrenia: a genome scan targets chromosomes 3p and 8p as potential sites of susceptibility genes. *Am J Med Genet* 60: 252–260.
33. Kendler KS, Myers JM, O'Neill FA, Martin R, Murphy B, et al. (2000) Clinical features of schizophrenia and linkage to chromosomes 5q, 6p, 8p, and 10p in the Irish Study of High-Density Schizophrenia Families. *Am J Psychiatry* 157: 402–408.
34. Gurling HM, Kalsi G, Brynjolfsson J, Sigmundsson T, Sherrington R, et al. (2001) Genomewide genetic linkage analysis confirms the presence of susceptibility loci for schizophrenia, on chromosomes 1q32.2, 5q33.2, and 8p21–22 and provides support for linkage to schizophrenia, on chromosomes 11q23.3–24 and 20q12.1–11.23. *Am J Hum Genet* 68: 661–673.
35. Cheng R, Joo SH, Loth JE, Nee J, Iossifov I, et al. (2006) Genome-wide linkage scan in a large bipolar disorder sample from the National Institute of Mental Health genetics initiative suggests putative loci for bipolar disorder, psychosis, suicide, and panic disorder. *Mol Psychiatry* 11: 252–260.
36. Zubenko GS, Maher BS, Hughes HB 3rd, Zubenko WN, Scott Stiffler J, et al. (2004) Genome-wide linkage survey for genetic loci that affect the risk of suicide attempts in families with recurrent, early-onset, major depression. *Am J Med Genet B Neuropsychiatr Genet* 129B: 47–54.
37. Adzhubei IA, Schmidt S, Peshkin L, Ramensky VE, Gerasimova A, et al. (2010) A method and server for predicting damaging missense mutations. *Nat Methods* 7: 248–249.
38. Skol AD, Scott LJ, Abecasis GR, Boehnke M (2006) Joint analysis is more efficient than replication-based analysis for two-stage genome-wide association studies. *Nat Genet* 38: 209–213.
39. Purcell SM, Wray NR, Stone JL, Visscher PM, O'Donovan MC, et al. (2009) Common polygenic variation contributes to risk of schizophrenia and bipolar disorder. *Nature* 460: 748–752.
40. Faraone SV, Glatt SJ, Su J, Tsuang MT (2004) Three potential susceptibility loci shown by a genome-wide scan for regions influencing the age at onset of mania. *Am J Psychiatry* 161: 625–630.
41. Avramopoulos D, Lasseter VK, Fallin MD, Wolyniec PS, McGrath JA, et al. (2007) Stage II follow-up on a linkage scan for bipolar disorder in the Ashkenazim provides suggestive evidence for chromosome 12p and the GRIN2B gene. *Genet Med* 9: 745–751.
42. Lorenzi C, Delmonte D, Pirovano A, Marino E, Bongiorno F, et al. (2010) Searching susceptibility loci for bipolar disorder: a sib pair study on chromosome 12. *Neuropsychobiology* 61: 10–18.
43. Dowler S, Currie RA, Campbell DG, Deak M, Kular G, et al. (2000) Identification of pleckstrin-homology-domain-containing proteins with novel phosphoinositide-binding specificities. *Biochem J* 351: 19–31.
44. Schloesser RJ, Huang J, Klein PS, Manji HK (2008) Cellular plasticity cascades in the pathophysiology and treatment of bipolar disorder. *Neuropsychopharmacology* 33: 110–133.
45. Mitchell GA, Kassovska-Bratinova S, Boukafane Y, Robert MF, Wang SP, et al. (1995) Medical aspects of ketone body metabolism. *Clin Invest Med* 18: 193–216.
46. Kassovska-Bratinova S, Fukao T, Song XQ, Duncan AM, Chen HS, et al. (1996) Succinyl CoA: 3-oxoacid CoA transferase (SCOT): human cDNA cloning, human chromosomal mapping to 5p13, and mutation detection in a SCOT-deficient patient. *Am J Hum Genet* 59: 519–528.
47. Fukao T, Mitchell GA, Song XQ, Nakamura H, Kassovska-Bratinova S, et al. (2000) Succinyl-CoA:3-ketoacid CoA transferase (SCOT): cloning of the human SCOT gene, tertiary structural modeling of the human SCOT monomer, and characterization of three pathogenic mutations. *Genomics* 68: 144–151.
48. Torrey EF, Swallow CI (2003) Fatal olanzapine-induced ketoacidosis. *Am J Psychiatry* 160: 2241.
49. Goodwin GM, Anderson I, Arango C, Bowden CL, Henry C, et al. (2008) ECNP consensus meeting. Bipolar depression. Nice, March 2007. *Eur Neuropsychopharmacol* 18: 535–549.
50. Fukuda H, Nishida A, Saito H, Shimizu M, Yamawaki S (1994) Imipramine stimulates phospholipase C activity in rat brain. *Neurochem Int* 25: 567–571.
51. Bouron A, Chatton JY (1999) Acute application of the tricyclic antidepressant desipramine presynaptically stimulates the exocytosis of glutamate in the hippocampus. *Neuroscience* 90: 729–736.