

Telomere length is a critical determinant for survival in multiple myeloma

Journal:	<i>British Journal of Haematology</i>
Manuscript ID	BJH-2016-01838.R1
Manuscript Type:	Short Reports
Date Submitted by the Author:	19-Dec-2016
Complete List of Authors:	Hyatt, Sam; Cardiff University School of Medicine, Division of Cancer and Genetics Jones, Rhiannon; Cardiff University School of Medicine, Division of Cancer and Genetics Heppel, Nicole; School of Medicine, Cancer & Genetics Grimstead, Julia; Cardiff University School of Medicine, Division of Cancer and Genetics Fegan, Chris; School of Medicine, Cardiff University, Haematology Jackson, Graham; NCCC, Freeman Hospital, Department of Haematology Hills, Robert; Cardiff university, Haematology Allan, James; Northern Institute for Cancer Research, Newcastle University Pratt, Guy; Birmingham Heartlands Hospital, Department of Haematology Pepper, Chris; Cardiff University, Haematology Baird, Duncan; Cardiff University, School of Medicine
Key Words:	MULTIPLE MYELOMA, prognosis, TELOMERE, genome instability

1
2
3 1 Telomere length is a critical determinant for survival in multiple
4
5
6 2 myeloma
7
8

9
10 3

11 4 Sam Hyatt,^{1*} Rhiannon E. Jones,^{1*} Nicole H. Heppel,¹ Julia W. Grimstead,¹ Chris

12
13 5 Fegan,¹ Graham H. Jackson², **Robert Hills**,¹ James M. Allan,³ Guy Pratt,⁴ Chris

14
15 6 Pepper¹⁺ and Duncan M. Baird.¹⁺
16
17

18
19 7

20
21 8 *Equal contributions

22
23 9 +Joint senior authors
24
25

26
27 10

28 11 ¹Division of Cancer & Genetics, School of Medicine, Cardiff University, Heath Park,

29
30 12 Cardiff, CF14 4XN, UK. ²Department of Haematology, Royal Victoria Infirmary,

31
32 13 Newcastle upon Tyne, UK. ³Northern Institute for Cancer Research, Newcastle

33
34 14 University, Newcastle-upon-Tyne, UK. ⁴Centre for Clinical Haematology, University

35
36 15 Hospitals Birmingham NHS Foundation Trust, Birmingham.
37
38

39
40 16 **Running title:** Telomere based prognostication in Multiple Myeloma

41
42 17 **Keywords:** Multiple Myeloma, prognosis, telomere, genome instability
43
44

45
46 18
47
48
49
50
51
52
53
54
55
56
57
58
59
60

1
2
3 **1 Summary**
4

5 2 Patients with Multiple Myeloma (MM) exhibit variable clinical outcomes, which are
6
7 3 incompletely defined by the current prognostication tools. We examined the clinical
8
9 4 utility of high-resolution telomere length analysis as a prognostic marker in MM.
10
11 5 Stratification of the cohort using a previously determined length threshold for
12
13 6 telomere dysfunction revealed that patients with short telomeres had a significant
14
15 7 shorter overall survival ($P<0.0001$; HR=3.4). Multivariate modelling using forward
16
17 8 selection revealed that the most important prognostic factor was ISS, followed by
18
19 9 age and telomere length. Importantly, each ISS prognostic subset could be further
20
21 10 risk-stratified according to telomere length, supporting the inclusion of this
22
23 11 parameter as a refinement of the ISS.
24
25
26
27
28
29
30
31
32
33
34
35
36
37
38
39
40
41
42
43
44
45
46
47
48
49
50
51
52
53
54
55
56
57
58
59
60

1
2
3 1 Despite the introduction of novel therapeutic modalities, patients with multiple
4
5 2 myeloma (MM) display a heterogeneous clinical course, with survival ranging from a
6
7 3 few months to over 10 years. Therefore, there is a requirement for reliable
8
9 4 prognostic and predictive markers in this disease to allow for risk stratification and
10
11 5 rational clinical decision-making. The most commonly used prognostic system in MM
12
13 6 is the International Staging System (ISS) that is based on serum levels of both β_2 -
14
15 7 microglobulin and albumin (Greipp, *et al* 2005). Recently the ISS system has been
16
17 8 improved upon by the inclusion of cytogenetic information to take into account the
18
19 9 considerable genetic heterogeneity known to occur in this disease and the level of
20
21 10 lactate dehydrogenase (Palumbo, *et al* 2015). Hyperdiploidy and the loss of whole
22
23 11 chromosome arms is frequently detected in MM, this includes, amongst others,
24
25 12 gains of 1q in 30% of cases and the loss of 17p in 7% of cases (Walker, *et al* 2010).
26
27
28
29
30
31
32

33
34 14 Short dysfunctional telomeres are susceptible to DNA repair activities that can result
35
36 15 in chromosomal fusion and the initiation of cycles of anaphase-bridging, breakage
37
38 16 and fusion that can drive genomic instability and clonal evolution (Artandi, *et al*
39
40 17 2000, Jones, *et al* 2014, Roger, *et al* 2013). Telomere dysfunction has been
41
42 18 documented in numerous haematological malignancies (Jones, *et al* 2012), **this** is
43
44 19 one putative mechanism that may lead to the genetic and clinical heterogeneity
45
46 20 observed in MM (Wu, *et al* 2003) **and may relate to changes in the 3D telomeric**
47
48 21 **architecture that have been documented in MM cells (Klewes, *et al* 2013)**. Recently
49
50 22 we have shown that high-resolution telomere analysis, combined with a functional
51
52 23 definition of telomere length, can provide powerful prognostic information in several
53
54 24 tumour types, including chronic lymphocytic leukaemia (CLL)(Lin, *et al* 2014),
55
56
57
58
59
60

1
2
3 1 myelodysplasia (Williams et al. in prep) and breast cancer (Simpson, *et al* 2015).

4
5 2 Here we sought to apply these technologies to examine the prognostic utility of

6
7 3 telomere length in MM.

8
9 4

10 5 **Materials and Methods**

11 6 **Patients samples and cell separation**

12 7 Patient samples were collected at diagnosis, prior to treatment, through treating
13 8 centres within the Heart of England NHS Foundation Trust and the Newcastle upon
14 9 Tyne NHS Foundation Trust between 1990 and 2005, with ethical approval from the
15 10 Newcastle Haematology Biobank (07/H0906/109+5) in accordance with the
16 11 declaration of Helsinki. Bone marrow samples from five MM patients were
17 12 fractionated into CD138⁺ and CD138⁻ cells using positive selection with CD138+
18 13 microbeads and the AutoMACS system (Miltenyi). Cytogenetics was not available on
19 14 these samples and thus the original ISS staging system was used for this study
20 15 (Greipp, *et al* 2005).

21 16 **DNA extraction and single telomere length analysis**

22 17 DNA was extracted from sorted cell populations using the Qiagen DNeasy blood and
23 18 tissue extraction kit, according to the manufacturers instructions. Single telomere
24 19 length analysis (STELA) at the XpYp telomere was performed as previously described
25 20 (Baird, *et al* 2003, Britt-Compton, *et al* 2006, Capper, *et al* 2007). A minimum of 6
26 21 PCR reactions per sample were carried out for each test DNA and DNA fragments
27 22 were resolved by agarose gel electrophoresis, and detected by Southern
28 23 hybridisations and phosphorimaging.

29 24 **Statistical methods**

1
2
3 1 Statistical analysis was carried out using Prism 6.0 (Graphpad) and SAS version 9.3
4
5 2 software (SAS Institute). Univariate comparisons for overall survival (OS) were
6
7 3 conducted with the log-rank test and displayed as Kaplan Meier curves. $P < .05$ was
8
9 4 considered significant. Analyses of time to event outcomes with respect to
10
11 5 continuous variables or those with less than two categories, together with
12
13 6 multivariable analyses, were performed using a Cox proportional hazard model with
14
15 7 forward selection. $P < 0.05$ was considered significant.
16
17
18
19
20
21
22
23

24 9 Results and discussion

25 10 We used Single Telomere Length Analysis (STELA) of the XpYp telomere to generate
26
27 12 telomere length profiles from unsorted bone marrow samples derived from a cohort
28
29 13 of 61 patients with MGUS and 134 patients with MM (Figure 1A). STELA is a high-
30
31 14 resolution technology capable of detecting telomeres within the length ranges at
32
33 15 which telomere fusion is known to occur (Letsolo, *et al* 2010, Lin, *et al* 2014). STELA
34
35 16 also provides information on telomere length distributions, which relate to the
36
37 17 clonality, replicative history and the cell purity of the tumour cell population
38
39 18 analysed. At the individual patient level, it was apparent that the telomeres in both
40
41 19 the MGUS and MM bone marrow samples displayed considerable length
42
43 20 heterogeneity (Figure 1A), **with an overall mean of the SDs obtained from these**
44
45 21 **distributions in the MGUS cohort of 2.23 kb and 2.12 kb for the MM cohort.** This
46
47 22 was in contrast to a similar analysis in CLL (Lin, *et al* 2010) where purified tumour
48
49 23 cells were analysed and individual telomere length distributions were significantly
50
51 24 more homogeneous (mean SD = 1.28) compared to those observed in MM and
52
53 25 MGUS patients ($p < .0001$; **Mann-Whitney**). The telomere length heterogeneity in
54
55
56
57
58
59
60

1
2
3 1 the MM samples was consistent with the differing replicative histories of the
4
5 2 numerous cell populations that composed the unsorted bone marrow samples
6
7 3 analysed.
8
9

10 4
11
12 5 The majority of telomere length profiles derived from MM patient samples displayed
13
14 6 multi-modal distributions with sub-populations of cells displaying more extensive
15
16 7 telomere erosion (highlighted in red in Figure 1A). To examine the telomere length
17
18 8 distributions of purified myeloma plasma cell populations, we undertook cell sorting
19
20 9 in a subset of myeloma bone marrow samples ($n = 5$) and analysed the CD138⁺ and
21
22 10 CD138⁻ cell fractions separately. Distinct differences in the telomere length
23
24 11 distributions were apparent (Figure 1B), with CD138⁺ plasma cells (mean = 2.40kb)
25
26 12 displaying significant telomere erosion compared to the CD138⁻ cells (mean = 5.26kb;
27
28 13 $p = .008$). These data indicate that the shorter telomere length distribution observed
29
30 14 in unsorted MM samples represent CD138⁺ malignant plasma cells. Importantly
31
32 15 these data are consistent with MM plasma cells exhibiting an extensive replicative
33
34 16 history that is distinct to that of bone marrow CD138⁻ cells in these patients.
35
36
37
38
39
40
41
42

43 18 Overall, telomere length was shorter in MM compared to MGUS patient samples ($P =$
44
45 19 $.017$; **Mann-Whitney**) with 19% of MM samples within the fusogenic range (Figure
46
47 20 1C); the telomere length threshold below which we detected telomere fusions in CLL
48
49 21 (3.81kb)(Lin, *et al* 2014). Telomere length declined as a function of age in MM at
50
51 22 rates consistent with the extensive literature on telomere dynamics in normal
52
53 23 peripheral blood samples (-25 bp/year, $p = .00056$; Figure 1D)(Muezzinler, *et al*
54
55 24 2013). However, there was no significant difference in telomere length between any
56
57
58
59
60

1
2
3 of the International Staging System (ISS) subgroups ($p = .27$; Figure 1C) or between
4
5
6 2 sexes ($p = .22$).
7
8
9
10

11 4 The median telomere length of the MM cohort provided modest prognostic
12 5 resolution (HR = **1.61 (1.04-2.53)**, $p = .03$; data not shown). In contrast, use of the
13 6 previously determined telomere dysfunction threshold (Lin, *et al* 2014) was highly
14 7 prognostic for overall survival in MM (HR = **3.42 (3.67-15.81)**, $P < .0001$; Figure 2A); a
15 8 striking observation, given the variable contributions of plasma cells to the unsorted
16 9 heterogeneous samples analysed.
17
18
19
20
21
22
23
24

25
26
27 11 Consistent with previous reports, the ISS provided strong prognostic information in
28 12 our MM cohort (HR = **3.56 (2.92-9.13)**, $p < .0001$; Figure 2B), that was similar to that
29 13 derived using the telomere dysfunction threshold. In order to assess whether
30 14 telomere length could add prognostic resolution to the ISS, we performed
31 15 multivariate analysis on 113/131 (86.3%) MM samples on which we had all relevant
32 16 clinical data. In a model which included the potential covariates of mean telomere
33 17 length, gender, age, ISS sub-groups and the telomere dysfunction threshold (3.81kb),
34 18 the most important prognostic factor was ISS, followed by age and telomere length
35 19 below 3.81kb (**Table 1**). After adjustment for ISS and age, telomere length <3.81kb
36 20 was associated with significantly shorter survival (HR = **2.23 (1.26-3.96)**, $P = .006$;
37 21 Figure 2C). Despite the prognostic independence of telomere length, there was
38 22 evidence of an interaction between ISS and this parameter, with the effect of short
39 23 telomeres less prominent in patients with high risk ISS score ($P = .05$). However, in
40 24 univariate analyses, stratified by ISS score, short telomeres still were associated with
41
42
43
44
45
46
47
48
49
50
51
52
53
54
55
56
57
58
59
60

1 significantly worse survival in high risk ISS patients ($P = .02$). Overall, patients with
2 good or standard risk ISS who manifested short telomeres, or high risk ISS patients
3 with long telomeres had intermediate survival when compared to concordant groups
4 consisting of good/standard risk ISS and long telomeres and high risk ISS and short
5 telomeres (Figure 2D). These findings suggest that a refinement of the risk
6 classification could be obtained by incorporating telomere length assessment into
7 the ISS for MM. Given the obvious differences observed between malignant plasma
8 cells and other bone marrow constituents, we speculate that purification of the MM
9 tumour cells would further enhance the clinical utility of high-resolution telomere
10 length analysis in this disease.

1
2
3 **1 Acknowledgements:**
4

5 2 This work was supported by grants from Bloodwise (13033, 06002, 13044), the
6
7 3 Leukaemia Research Appeal for Wales and Cancer Research UK (C17199/A18246).
8
9

10 **4 Conflict of Interest Statement:**
11

12 5 SH declares no conflict of interests; REJ declares no conflict of interests; NHH
13
14 6 declares no conflict of interests; CF declares no conflict of interests other than co-
15
16 7 authorship of a patent application based on some of this work; GHJ declares no
17
18 8 conflict of interests; JMA declares no conflict of interests; GP declares no conflict of
19
20 9 interests; CP declares no conflict of interests other than co-authorship of a patent
21
22 10 application based on some of this work; DMB declares no conflict of interests other
23
24 11 than co-authorship of a patent application based on some of this work.
25
26
27
28

29 12
30
31
32
33
34
35
36
37
38
39
40
41
42
43
44
45
46
47
48
49
50
51
52
53
54
55
56
57
58
59
60

1
2
3 **References**

- 4 Artandi, S.E., Chang, S., Lee, S.L., Alson, S., Gottlieb, G.J., Chin, L. & DePinho, R.A.
5 (2000) Telomere dysfunction promotes non-reciprocal translocations and
6 epithelial cancers in mice. *Nature*, **406**, 641-645.
- 7 Baird, D.M., Rowson, J., Wynford-Thomas, D. & Kipling, D. (2003) Extensive allelic
8 variation and ultrashort telomeres in senescent human cells. *Nature genetics*,
9 **33**, 203-207.
- 10 Britt-Compton, B., Rowson, J., Locke, M., Mackenzie, I., Kipling, D. & Baird, D.M.
11 (2006) Structural stability and chromosome-specific telomere length is
12 governed by cis-acting determinants in humans. *Human molecular genetics*,
13 **15**, 725-733.
- 14 Capper, R., Britt-Compton, B., Tankimanova, M., Rowson, J., Letsolo, B., Man, S.,
15 Houghton, M. & Baird, D.M. (2007) The nature of telomere fusion and a
16 definition of the critical telomere length in human cells. *Genes &*
17 *development*, **21**, 2495-2508.
- 18 Greipp, P.R., San Miguel, J., Durie, B.G., Crowley, J.J., Barlogie, B., Blade, J.,
19 Boccadoro, M., Child, J.A., Avet-Loiseau, H., Kyle, R.A., Lahuerta, J.J., Ludwig,
20 H., Morgan, G., Powles, R., Shimizu, K., Shustik, C., Sonneveld, P., Tosi, P.,
21 Turesson, I. & Westin, J. (2005) International staging system for multiple
22 myeloma. *J Clin Oncol*, **23**, 3412-3420.
- 23 Jones, C.H., Pepper, C. & Baird, D.M. (2012) Telomere dysfunction and its role in
24 haematological cancer. *Br J Haematol*, **156**, 573-587.
- 25 Jones, R.E., Oh, S., Grimstead, J.W., Zimbric, J., Roger, L., Heppel, N.H., Ashelford,
26 K.E., Liddiard, K., Hendrickson, E.A. & Baird, D.M. (2014) Escape from
27 Telomere-Driven Crisis Is DNA Ligase III Dependent. *Cell Rep*, **8**, 1063-1076.
- 28 Klewes, L., Vallente, R., Dupas, E., Brand, C., Grun, D., Guffei, A., Sathitruangsak, C.,
29 Awe, J.A., Kuzyk, A., Lichtensztejn, D., Tammur, P., Ilus, T., Tamm, A., Punab,
30 M., Rubinger, M., Olujohungbe, A. & Mai, S. (2013) Three-dimensional
31 Nuclear Telomere Organization in Multiple Myeloma. *Transl Oncol*, **6**, 749-
32 756.
- 33 Letsolo, B.T., Rowson, J. & Baird, D.M. (2010) Fusion of short telomeres in human
34 cells is characterised by extensive deletion and microhomology and can result
35 in complex rearrangements. *Nucleic Acids Res*, **38**, 1841-1852.
- 36 Lin, T.T., Letsolo, B.T., Jones, R.E., Rowson, J., Pratt, G., Hewamana, S., Fegan, C.,
37 Pepper, C. & Baird, D.M. (2010) Telomere dysfunction and fusion during the
38 progression of chronic lymphocytic leukaemia: evidence for a telomere crisis.
39 *Blood*, **116**, 1899-1907.
- 40 Lin, T.T., Norris, K., Heppel, N.H., Pratt, G., Allan, J.M., Allsup, D.J., Bailey, J.,
41 Cawkwell, L., Hills, R., Grimstead, J.W., Jones, R.E., Britt-Compton, B., Fegan,
42 C., Baird, D.M. & Pepper, C. (2014) Telomere dysfunction accurately predicts
43 clinical outcome in chronic lymphocytic leukaemia, even in patients with
44 early stage disease. *Br J Haematol*, **167**, 214-223.
- 45 Muezzinler, A., Zaineddin, A.K. & Brenner, H. (2013) A systematic review of leukocyte
46 telomere length and age in adults. *Ageing Res Rev*, **12**, 509-519.
- 47 Palumbo, A., Avet-Loiseau, H., Oliva, S., Lokhorst, H.M., Goldschmidt, H., Rosinol, L.,
Richardson, P., Caltagirone, S., Lahuerta, J.J., Facon, T., Bringhen, S., Gay, F.,
Attal, M., Passera, R., Spencer, A., Offidani, M., Kumar, S., Musto, P., Lonial,

- 1
2
3 1 S., Petrucci, M.T., Orlowski, R.Z., Zamagni, E., Morgan, G., Dimopoulos, M.A.,
4 2 Durie, B.G., Anderson, K.C., Sonneveld, P., San Miguel, J., Cavo, M., Rajkumar,
5 3 S.V. & Moreau, P. (2015) Revised International Staging System for Multiple
6 4 Myeloma: A Report From International Myeloma Working Group. *J Clin*
7 5 *Oncol*, **33**, 2863-2869.
- 8
9 6 Roger, L., Jones, R.E., Heppel, N.H., Williams, G.T., Sampson, J.R. & Baird, D.M. (2013)
10 7 Extensive telomere erosion in the initiation of colorectal adenomas and its
11 8 association with chromosomal instability. *J Natl Cancer Inst*, **105**, 1202-1211.
- 12
13 9 Simpson, K., Jones, R.E., Grimstead, J.W., Hills, R., Pepper, C. & Baird, D.M. (2015)
14 10 Telomere fusion threshold identifies a poor prognostic subset of breast
15 11 cancer patients. *Mol Oncol*, **9**, 1186-1193.
- 16
17 12 Walker, B.A., Leone, P.E., Chiecchio, L., Dickens, N.J., Jenner, M.W., Boyd, K.D.,
18 13 Johnson, D.C., Gonzalez, D., Dagrada, G.P., Protheroe, R.K., Konn, Z.J.,
19 14 Stockley, D.M., Gregory, W.M., Davies, F.E., Ross, F.M. & Morgan, G.J. (2010)
20 15 A compendium of myeloma-associated chromosomal copy number
21 16 abnormalities and their prognostic value. *Blood*, **116**, e56-65.
- 22
23 17 Wu, K.D., Orme, L.M., Shaughnessy, J., Jr., Jacobson, J., Barlogie, B. & Moore, M.A.
24 18 (2003) Telomerase and telomere length in multiple myeloma: correlations
25 19 with disease heterogeneity, cytogenetic status, and overall survival. *Blood*,
26 20 **101**, 4982-4989.
- 27
28
29
30
31
32
33
34
35
36
37
38
39
40
41
42
43
44
45
46
47
48
49
50
51
52
53
54
55
56
57
58
59
60

1 **Table 1. Multivariate modelling revealed three significant independent variables.**

2

Summary of Forward Selection					
Step	Effect entered	DF	Number In	Chi-Square test statistic	p-value
1	ISS 3	1	1	34.7751	<.0001
2	age	1	2	18.1900	<.0001
3	TL <3.81kb	1	3	7.7095	0.0055

3 ISS 3: Multiple myeloma International Scoring System stage 3

4 TL <3.81kb: mean telomere length of less than 3.81kb

5 Using a Cox proportional hazards model with forward selection, only three variables
6 were deemed to hold independent prognostic significance ($p \leq .05$).

7
8
9
10
11
12
13
14
15
16
17
18
19
20
21
22
23
24
25
26
27
28
29
30
31
32
33
34
35
36
37
38
39
40
41
42
43
44
45
46
47
48
49
50
51
52
53
54
55
56
57
58
59
60

1
2
3 **1 Figure Legends**
4

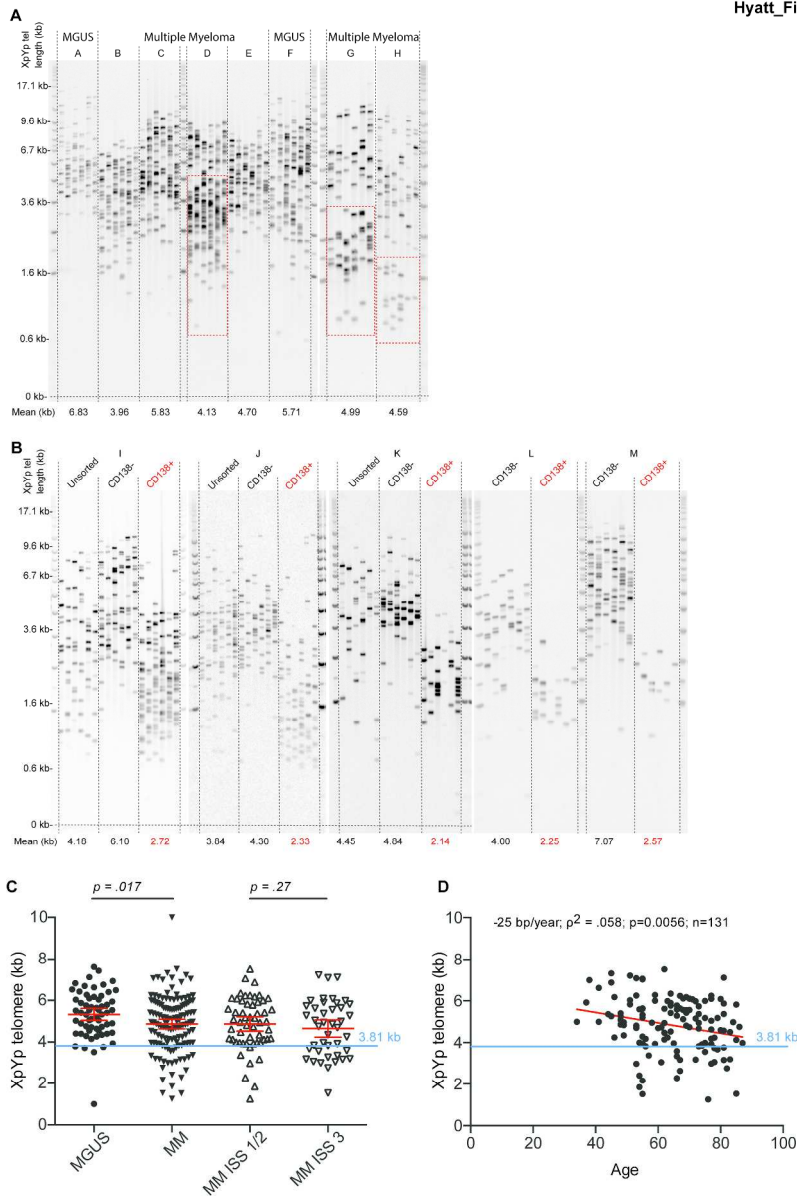
5 **2 Figure 1. MM and MGUS exhibit heterogeneous telomere length profiles. (A)**
6

7
8 Examples of STELA of the XpYp telomere in 8 MM and MGUS samples. The mean of
9
10 the telomere length profiles are indicated in black below each sample. Red boxes
11
12 indicate the shorter modal telomere length profiles in samples that display a
13
14 multimodal telomere length distributions. (B) Comparison of cell sorted CD138⁺ and
15
16 CD138⁻ sub-populations revealed distinctly shorter telomere length profiles in
17
18 CD138⁺ cells. (C) Scatter plot depicting mean telomere length measurements for
19
20 cohorts of MGUS and MM patients, and MM ISS 1/2 and ISS 3 sub-groups. The
21
22 upper limit of telomere dysfunction (3.81kb) is shown as a blue horizontal line.
23
24 Statistical comparisons were undertaken using non-parametric Mann-Whitney
25
26 tests. (D) Plotting mean telomere length as a function of age shown in years. P value
27
28 was determined using Spearman correlation.
29
30
31
32

33 **14 Figure 2. Telomere length is highly prognostic in MM.** Kaplan Meier survival analysis
34

35
36 was performed on the MM cohort using the log-rank test (A) The telomere
37
38 dysfunction threshold (<3.81kb) identified a subset of MM patients with inferior
39
40 survival. (B) In keeping with previous reports, the ISS 3 sub-group also showed
41
42 significantly inferior survival compared to the combined ISS 1/2 sub-group. (C) Even
43
44 after adjustment for ISS and age, MM patients with telomere length <3.81kb had
45
46 significantly shorter survival. (D) The combination of ISS and the telomere
47
48 dysfunction threshold provided a refinement of their prognostic information. ISS 1/2
49
50 patients with short telomeres, or ISS 3 patients with long telomeres had
51
52 intermediate survival when compared to concordant groups consisting of ISS 1/2 and
53
54 long telomeres and ISS 3 and short telomeres.
55
56
57
58
59
60

Hyatt_Figure 1

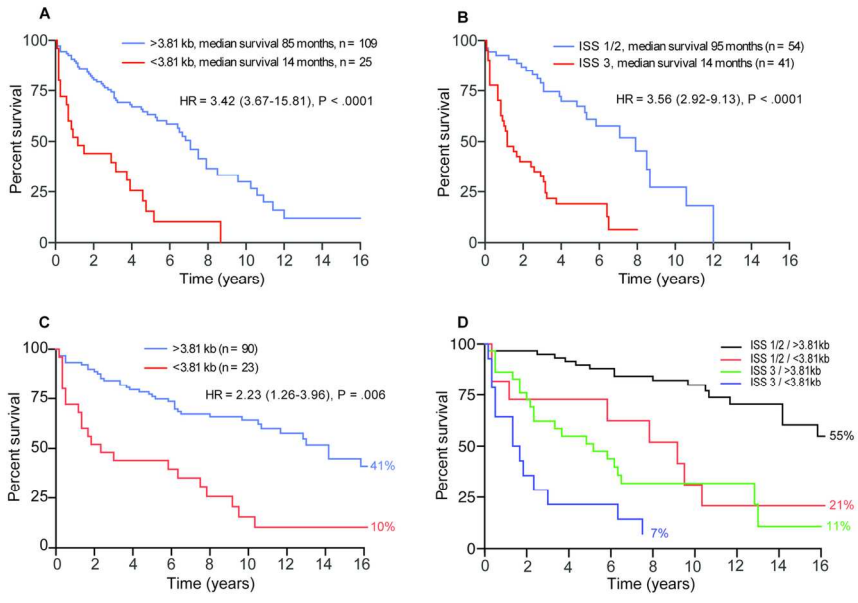


263x376mm (300 x 300 DPI)

1
2
3
4
5
6
7
8
9
10
11
12
13
14
15
16
17
18
19
20
21
22
23
24
25
26
27
28
29
30
31
32
33
34
35
36
37
38
39
40
41
42
43
44
45
46
47
48
49
50
51
52
53
54
55
56
57
58
59
60

1
2
3
4
5
6
7
8
9
10
11
12
13
14
15
16
17
18
19
20
21
22
23
24
25
26
27
28
29
30
31
32
33
34
35
36
37
38
39
40
41
42
43
44
45
46
47
48
49
50
51
52
53
54
55
56
57
58
59
60

Hyatt_Figure 2



141x89mm (300 x 300 DPI)

Review