

This is an Open Access document downloaded from ORCA, Cardiff University's institutional repository: <https://orca.cardiff.ac.uk/id/eprint/103931/>

This is the author's version of a work that was submitted to / accepted for publication.

Citation for final published version:

Jefferies, Matthew T., Cox, Adam C., Shorning, Boris Y., Meniel, Valerie, Griffiths, David, Kynaston, Howard G. , Smalley, Matthew J. and Clarke, Alan R. 2017. PTEN loss and activation of K-RAS and β -catenin cooperate to accelerate prostate tumourigenesis. *Journal of Pathology* 243 (4) , pp. 442-456. 10.1002/path.4977

Publishers page: <http://dx.doi.org/10.1002/path.4977>

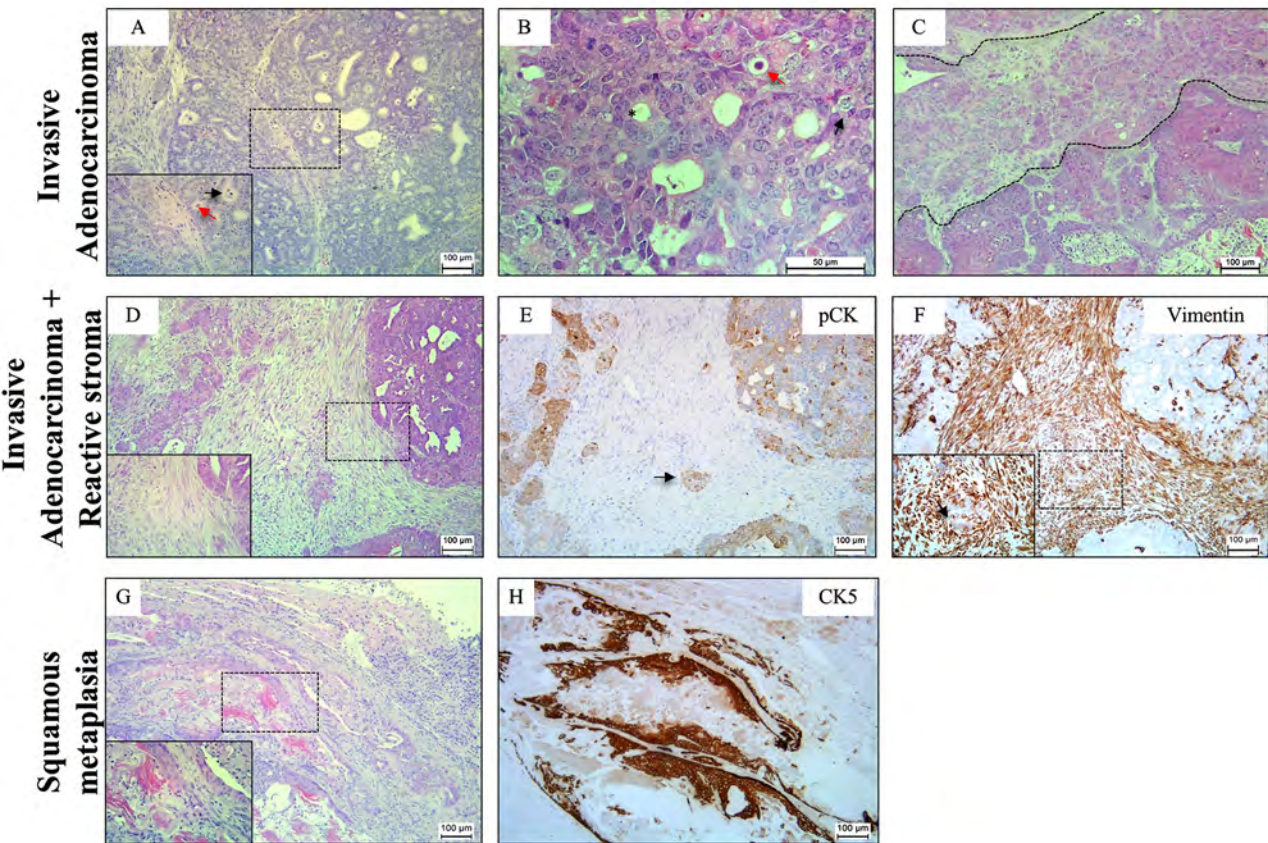
Please note:

Changes made as a result of publishing processes such as copy-editing, formatting and page numbers may not be reflected in this version. For the definitive version of this publication, please refer to the published source. You are advised to consult the publisher's version if you wish to cite this paper.

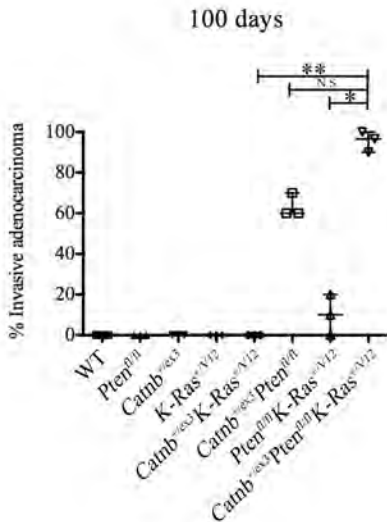
This version is being made available in accordance with publisher policies. See <http://orca.cf.ac.uk/policies.html> for usage policies. Copyright and moral rights for publications made available in ORCA are retained by the copyright holders.



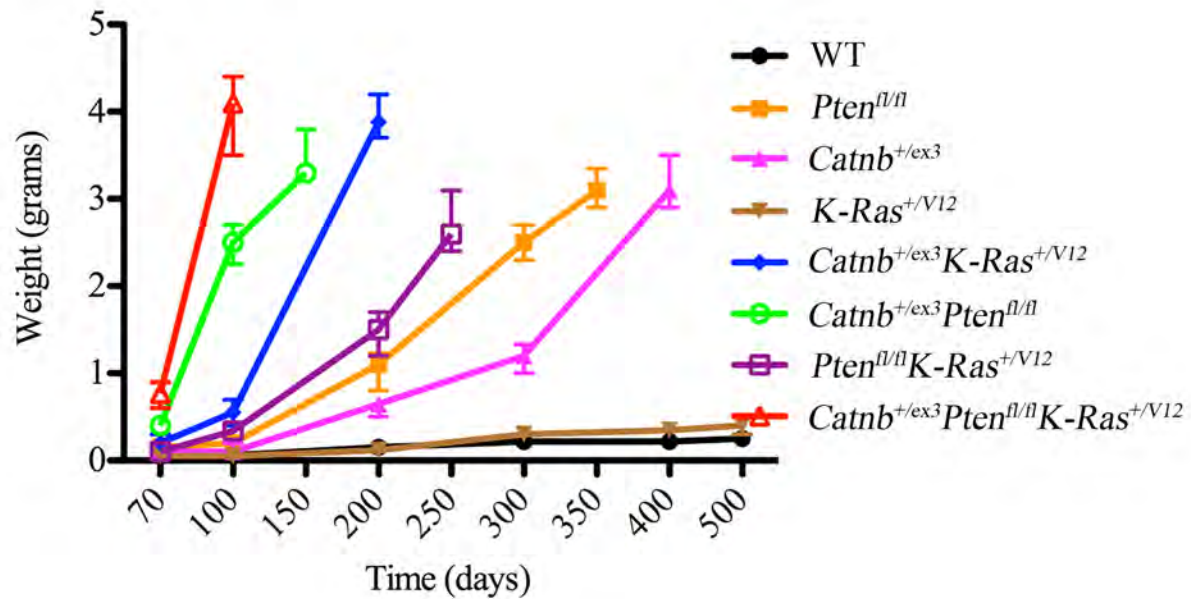
Supplementary Figure S1



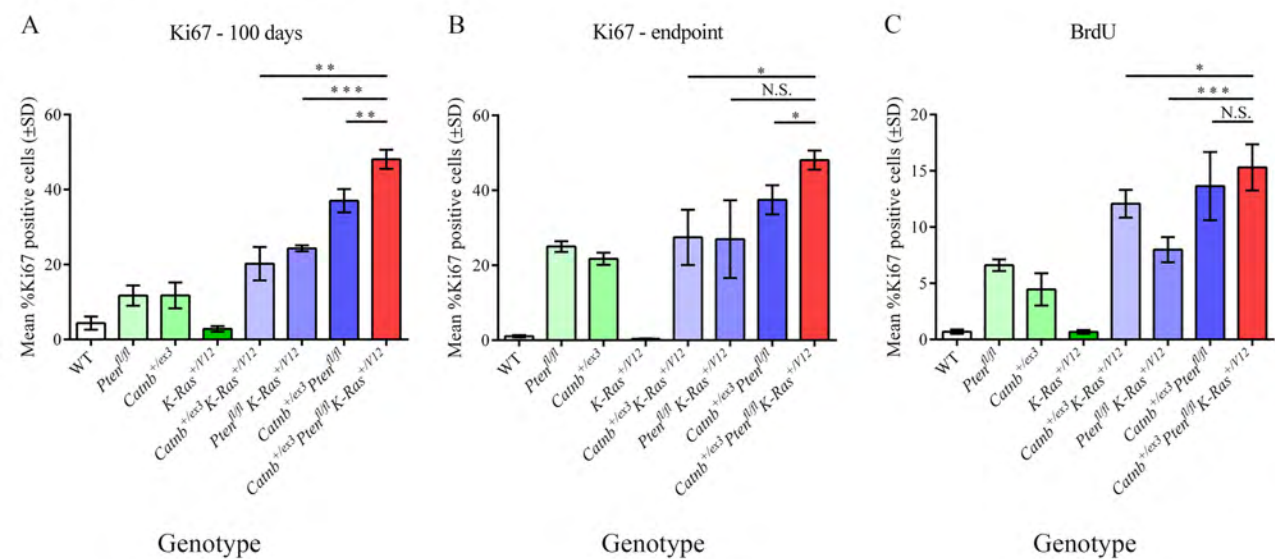
Supplementary Figure S2



Supplementary Figure S3



Supplementary Figure S4



Ki67 (100 days)

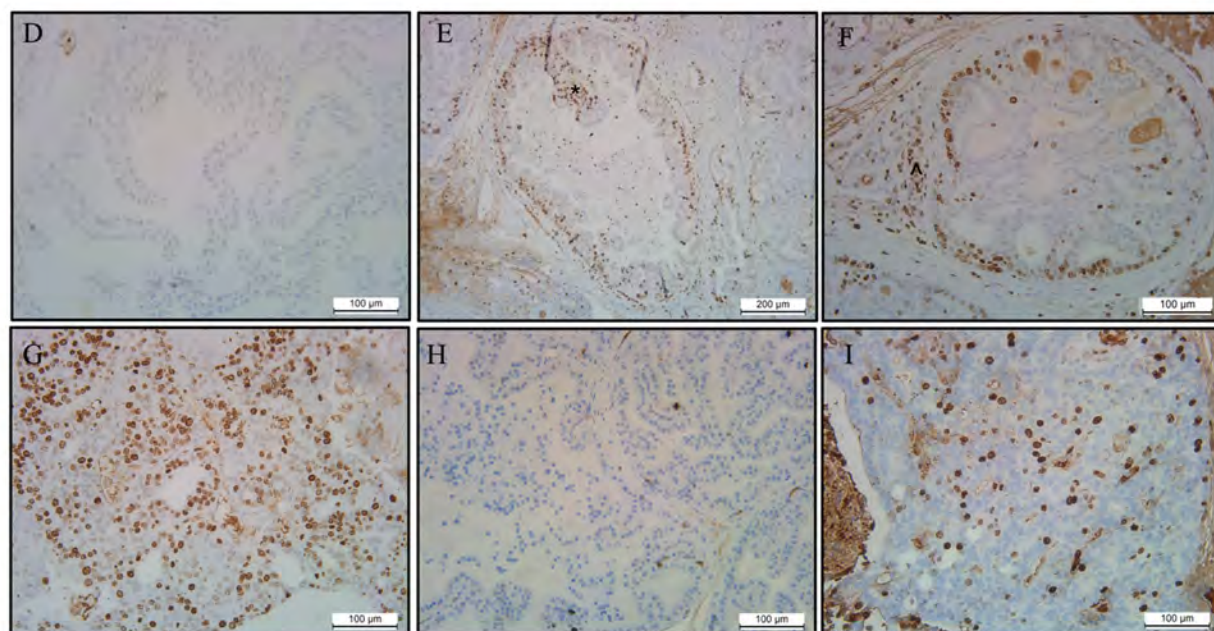
Genotype	WT	Pten ^{fl/fl}	Catnb ^{+/lox}	K-Ras ^{+/12}	Catnb ^{+/lox} K-Ras ^{+/12}	Pten ^{fl/fl} K-Ras ^{+/12}	Catnb ^{+/lox} Pten ^{fl/fl} K-Ras ^{+/12}
WT	0.0169						
Pten ^{fl/fl}	0.0280	0.9789					
Catnb ^{+/lox}	0.2095	0.0027	0.0037				
K-Ras ^{+/12}	0.0036	0.0483	0.0614	0.0008			
Catnb ^{+/lox} K-Ras ^{+/12}	0.0013	0.0056	0.0102	0.0002	0.2160		
Pten ^{fl/fl} K-Ras ^{+/12}	0.0006	0.0013	0.0023	0.0001	0.0128	0.0012	
Catnb ^{+/lox} Pten ^{fl/fl} K-Ras ^{+/12}	0.0004	0.0005	0.0010	0.0001	0.0013	0.0001	0.0097

Ki67 (endpoint)

Genotype	WT	Pten ^{fl/fl}	Catnb ^{+/lox}	K-Ras ^{+/12}	Catnb ^{+/lox} K-Ras ^{+/12}	Pten ^{fl/fl} K-Ras ^{+/12}	Catnb ^{+/lox} Pten ^{fl/fl} K-Ras ^{+/12}
WT	0.0001						
Pten ^{fl/fl}	0.0001	0.0626					
Catnb ^{+/lox}	0.0130	0.0001	0.0001				
K-Ras ^{+/12}	0.0001	0.6514	0.2344	0.0001			
Catnb ^{+/lox} K-Ras ^{+/12}	0.0001	0.9119	0.5089	0.0001	0.8732		
Pten ^{fl/fl} K-Ras ^{+/12}	0.0001	0.0041	0.0019	0.0001	0.1056	0.1856	
Catnb ^{+/lox} Pten ^{fl/fl} K-Ras ^{+/12}	0.0001	0.0001	0.0001	0.0001	0.0177	0.0523	0.0200

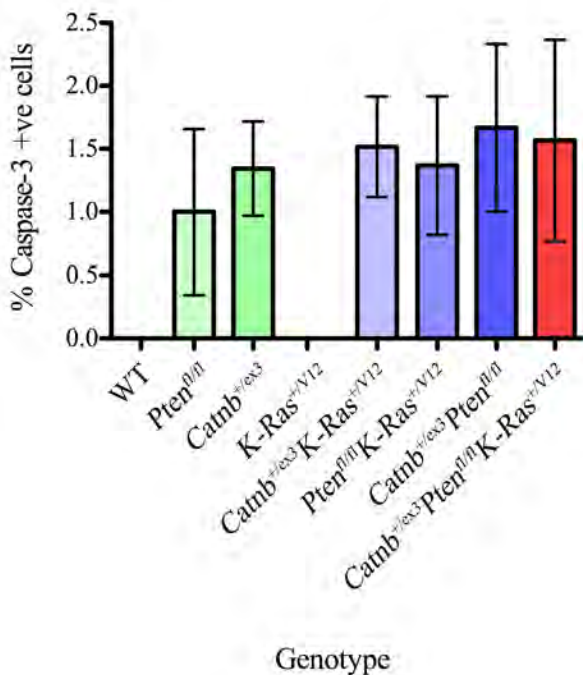
BrdU

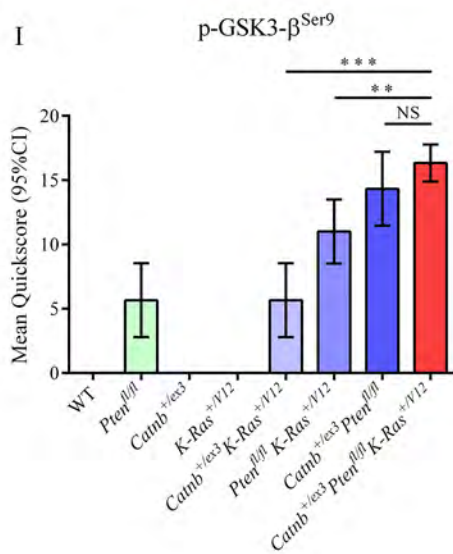
Genotype	WT	Pten ^{fl/fl}	Catnb ^{+/lox}	K-Ras ^{+/12}	Catnb ^{+/lox} K-Ras ^{+/12}	Pten ^{fl/fl} K-Ras ^{+/12}	Catnb ^{+/lox} Pten ^{fl/fl} K-Ras ^{+/12}
WT	0.0001						
Pten ^{fl/fl}	0.0001	0.0592					
Catnb ^{+/lox}	0.8950	0.0001	0.0002				
K-Ras ^{+/12}	0.0001	0.0001	0.0016	0.0001			
Catnb ^{+/lox} K-Ras ^{+/12}	0.0001	0.0534	0.0193	0.0001	0.0027		
Pten ^{fl/fl} K-Ras ^{+/12}	0.0001	0.0010	0.0018	0.0001	0.4183	0.0071	
Catnb ^{+/lox} Pten ^{fl/fl} K-Ras ^{+/12}	0.0001	0.0001	0.0006	0.0001	0.0324	0.0005	0.3668



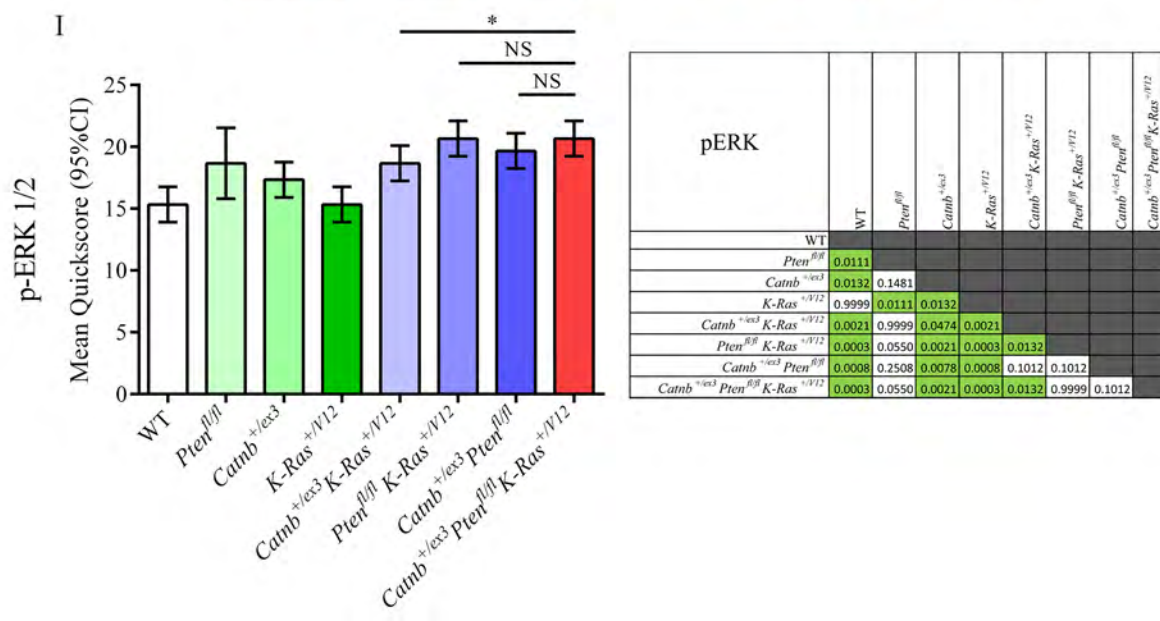
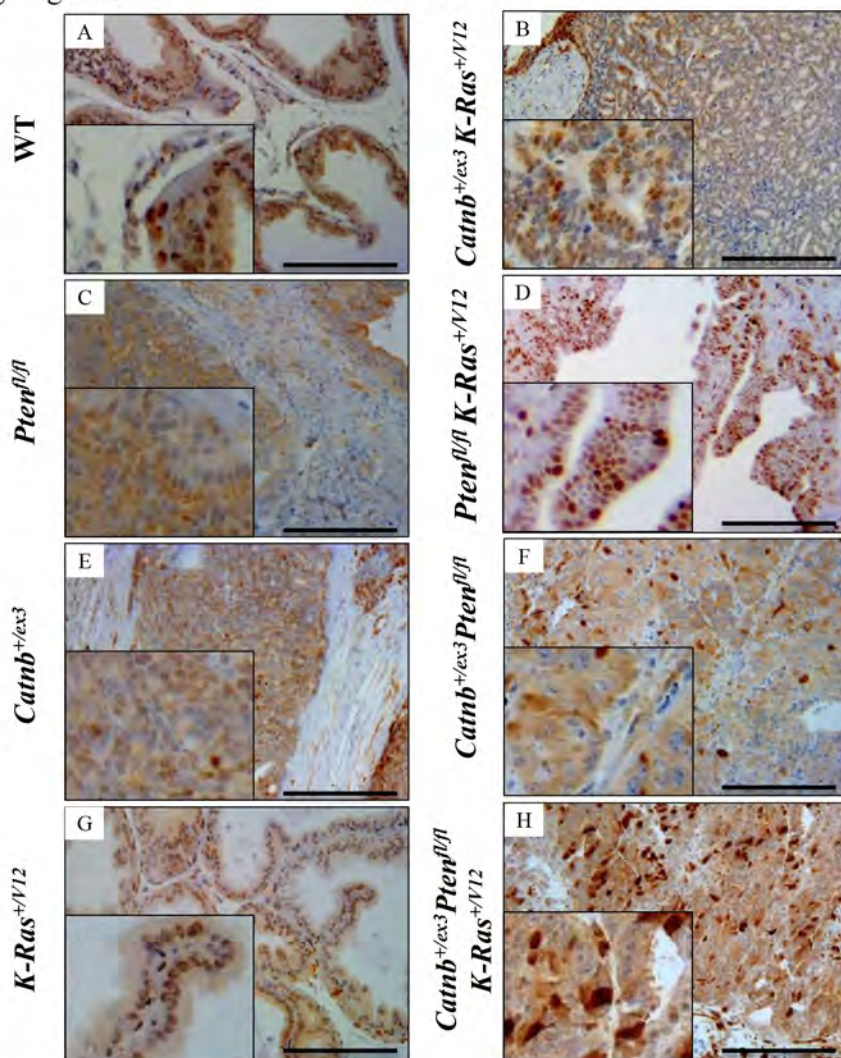
Supplementary Figure S5

Endpoint (death)

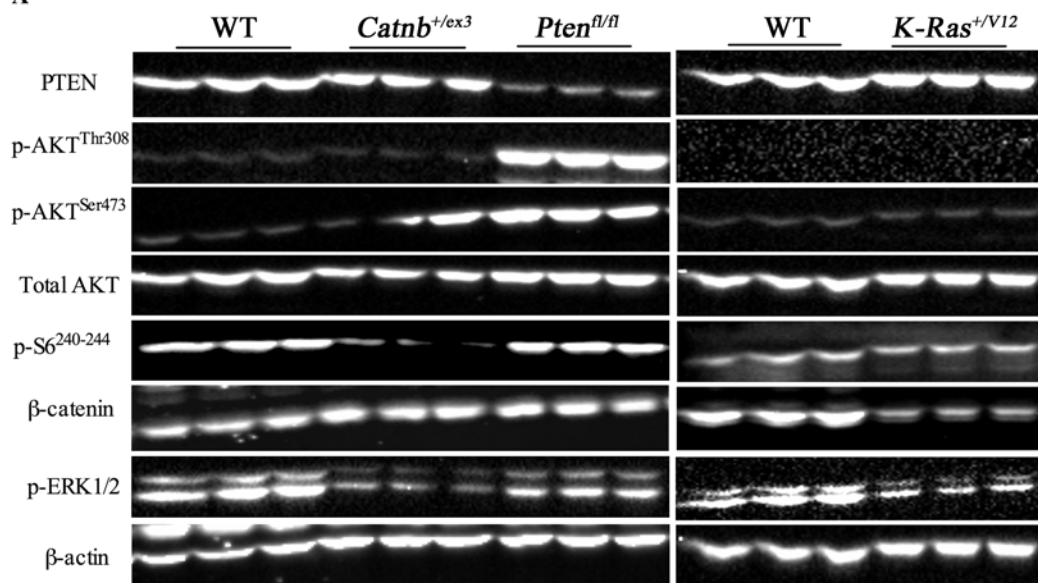




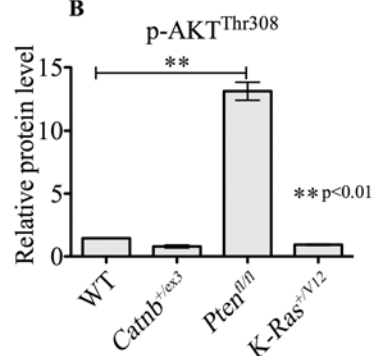
pGSK	WT	<i>Pten</i> ^{flp}	<i>Catnb</i> ^{Δex3}	<i>K-Ras</i> ^{ΔG12}	<i>Catnb</i> ^{Δex3} ; <i>K-Ras</i> ^{ΔG12}	<i>Pten</i> ^{flp} ; <i>K-Ras</i> ^{ΔG12}	<i>Catnb</i> ^{Δex3} ; <i>Pten</i> ^{flp}	<i>Catnb</i> ^{Δex3} ; <i>Pten</i> ^{flp} ; <i>K-Ras</i> ^{ΔG12}
WT								
<i>Pten</i> ^{flp}	0.0011							
<i>Catnb</i> ^{Δex3}	N/A	0.0011						
<i>K-Ras</i> ^{ΔG12}	N/A	0.0011	N/A					
<i>Catnb</i> ^{Δex3} ; <i>K-Ras</i> ^{ΔG12}	0.0011	0.9999	0.0011	0.0011				
<i>Pten</i> ^{flp} ; <i>K-Ras</i> ^{ΔG12}	0.0001	0.0038	0.0001	0.0001	0.0038			
<i>Catnb</i> ^{Δex3} ; <i>Pten</i> ^{flp}	0.0001	0.0008	0.0001	0.0001	0.0008	0.0194		
<i>Catnb</i> ^{Δex3} ; <i>Pten</i> ^{flp} ; <i>K-Ras</i> ^{ΔG12}	0.0001	0.0001	0.0001	0.0001	0.0001	0.0013	0.5500	



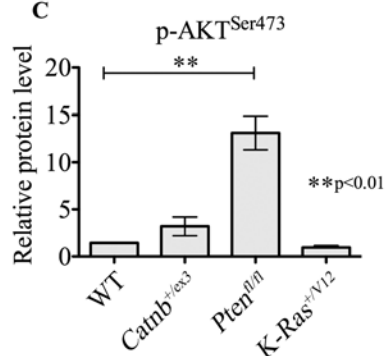
A



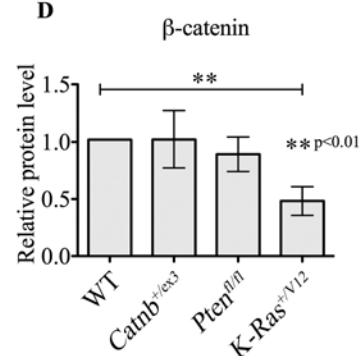
B



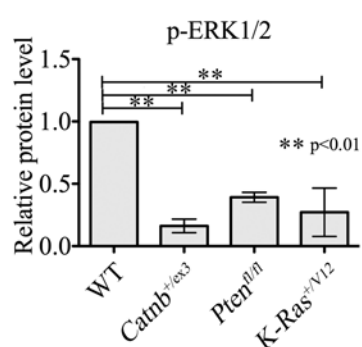
C



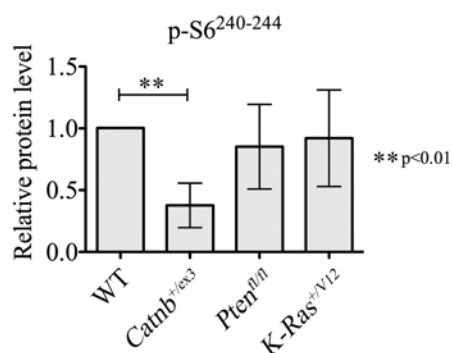
D



E



F



Supplementary Figure S9

