



Lurking in the dark: Cryptic *Strongyloides* in a Bornean slow loris

Liesbeth Frias^{a,*}, Danica J. Stark^{b,c}, Milena Salgado Lynn^{b,c,d,f}, Senthilvel KSS. Nathan^e, Benoit Goossens^{b,c,e,f}, Munehiro Okamoto^a, Andrew J.J. MacIntosh^a

^a Primate Research Institute, Kyoto University, Inuyama, Japan

^b Cardiff School of Biosciences, Cardiff University, Cardiff, UK

^c Danau Girang Field Centre, Lower Kinabatangan Wildlife Sanctuary, Sabah, Malaysia

^d Wildlife Health, Genetic and Forensic Laboratory, Kota Kinabalu, Sabah, Malaysia

^e Sabah Wildlife Department, Kota Kinabalu, Sabah, Malaysia

^f Sustainable Places Research Institute, Cardiff University, Cardiff, UK

ARTICLE INFO

Keywords:

Strongyloides
Nycticebus menagensis
Cryptic species
Host-parasite interactions
Malaysian Borneo

ABSTRACT

Within host communities, related species are more likely to share common parasitic agents, and as a result, morphological similarities have led researchers to conclude that parasites infecting closely related hosts within a community represent a single species. However, genetic diversity within parasite genera and host range remain poorly investigated in most systems. *Strongyloides* is a genus of soil-transmitted nematode that has been reported from several primate species in Africa and Asia, and has been estimated to infect hundreds of millions of people worldwide, although no precise estimates are available. Here we describe a case of infection with a cryptic species of *Strongyloides* in a Bornean (Philippine) slow loris (*Nycticebus menagensis*) living within a diverse community of several primate species in the Lower Kinabatangan Wildlife Sanctuary, Malaysian Borneo. Fresh fecal samples were collected from five primate species and nematode larvae cultured from these samples were selected for phylogenetic analyses. Sequences obtained for most larvae were identified as *S. fuelleborni*, grouping into three different clusters and showing no aggregation within specific hosts or geographic location. In contrast, a set of parasite sequences obtained from a slow loris clustered closely with *S. stercoralis* into a different group, being genetically distinct to sequences reported from other primate hosts, humans included. Our results suggest that although *S. fuelleborni* infects all haplorrhines sampled in this primate community, a different species might be infecting the slow loris, the only strepsirrhine in Borneo and one of the least studied primates in the region. Although more data are needed to support this conclusion, we propose that *Strongyloides* species in primates might be more diverse than previously thought, with potential implications for ecological and evolutionary host-parasite associations, as well as epidemiological dynamics.

1. Introduction

We are facing times characterized by unprecedented ecological change. Increasing rates of land conversion and habitat loss coupled with rapid growth of human populations and expansion into new areas pose risks for cross-species transmission of potential pathogens between wildlife populations, livestock and humans (Morgan et al., 2006; Goldberg et al., 2008; Cable et al., 2017; Hassell et al., 2017). Relevant to this context are parasitic nematodes infecting multiple host species, as their partial development outside of the host allows for infective larvae to persist in the environment, facilitating transmission between closely related host species without the need for direct contact or immediate temporal overlap (Morgan et al., 2004; Walker and Morgan, 2014; Nantima et al., 2015). Nematodes, however, tend to be highly

overlooked; they are rarely responsible for the mortality of their hosts, causing instead chronic debilitating diseases or even asymptomatic infections that usually perpetuate parasite dispersal and therefore risk of infection. Among such parasites of humans, *Strongyloides* is probably one of the most neglected (Olsen et al., 2009). Due to the challenging aspects of its diagnosis, control measures still have not been included in health packages targeting endemic areas (World Health Organization, 2012), and thus basic aspects of its epidemiology, such as its prevalence and distribution, are most likely highly underestimated.

Two species within the genus *Strongyloides* are known to infect humans and non-human primates (Speare, 1989; Viney and Lok, 2015): *Strongyloides fuelleborni* mainly infects nonhuman primates in Africa and Asia, with occasional human infections being reported (Pampiglione and Ricciardi, 1971; Hira and Patel, 1977; Hasegawa

* Corresponding author.

E-mail address: frias.liesbeth.48w@st.kyoto-u.ac.jp (L. Frias).

et al., 2010), while *S. stercoralis* has a cosmopolitan distribution in tropical and subtropical regions, being endemic in several countries but rarely being described in nonhuman primates outside of captivity (Hasegawa et al., 2010; Labes et al., 2011). Human infections reported from Papua New Guinea have been historically assigned to *S. fuelleborni kellyi* (Kelly et al., 1976), based on morphological similarities, although its taxonomic placement as a subspecies of *S. fuelleborni* is no longer supported by phylogenetic analyses (Dorris et al., 2002). Among other *Strongyloides* species infecting non-human primates, *S. cebus* is considered the only species infecting New World monkeys (Darling, 1911; Little, 1966), and *S. venezuelensis*, which typically infects rodents, has been used to experimentally infect marmosets (de Melo et al., 2012).

The first description of *S. fuelleborni* was done from material collected from chimpanzees and baboons more than 100 years ago (Linstow, 1905). However, the possible co-infection of multiple *Strongyloides* species in the first reports could have misinterpreted the descriptions of the parasite's morphology and life history, leading to the assumption that most cases of *Strongyloides* species infecting non-human primates corresponded to a single species. Nevertheless, the diversity of *Strongyloides* species in non-human primates remains unclear.

One problem in determining a given parasite's host range is that parasites that appear to be shared within host communities may in fact represent multiple cryptic species, each with a restricted host range. Therefore, to understand the complexity of transmission ecology it is not only necessary to consider the broader host community, which will ultimately influence parasite spread through parasite sharing and/or source-sink dynamics, but also the likelihood of cryptic parasite diversity only detectable via molecular analyses.

Borneo is one of the many areas targeted through global gap analyses as being in dire need of further investigation and likely to contain large numbers of undiscovered parasite species (Hopkins and Nunn, 2007; Pedersen and Davies, 2009). At least 10 different primate species are known to live sympatrically in the study area, but little is yet known about their parasite diversity and host range (Salgado Lynn, 2010). Here, we (1) characterize the genetic diversity of *Strongyloides* spp. in five of these primate hosts, including the critically endangered Bornean orangutan (*Pongo pygmaeus*) and endangered proboscis monkey (*Nasalis larvatus*), as well as the silvered leaf monkey (*Trachypithecus cristatus*), the long-tailed macaque (*Macaca fascicularis*), and the vulnerable slow loris (*Nycticebus menagensis*), and (2) report a case of infection with a genetically novel isolate of *Strongyloides* sp. in a free-living slow loris.

2. Materials and methods

2.1. Study area and host species

Sample collection was carried out within Lots 6 and 7 of the Lower Kinabatangan Wildlife Sanctuary (LKWS, 5°10'–5°50'N; 117°40'–118°30'E) in Sabah, Malaysian Borneo (Fig. 1). Backswamp areas consist of low-stature forests and grasslands, while drier areas are characterized by riparian and mixed lowland dipterocarp forests (Azmi, 1998). Flooding occurs seasonally between October and March (Harun et al., 2014). Fresh fecal samples were collected during boat surveys along the Kinabatangan River from proboscis monkeys, silvered leaf monkeys, and long-tailed macaques, while samples from orangutans were collected during tracking and direct observation. In October 2015, a slow loris was captured as part of a radio-collaring project, at which time a fresh fecal sample was collected opportunistically.

2.2. Nematode cultures and collection

Fourteen fresh fecal samples (Nm = 1; Pp = 4; Mf = 3; Nl = 4; Tc = 2), presumably collected from different individual hosts because samples were collected from different geographic areas within Lots 6 and 7 of the LKWS, were selected for coproculture. Larvae were

cultured within 12 h of collection at the Danau Girang Field Centre (DGFC) using a Harada-Mori filter-paper method (Harada and Mori, 1995) modified for the field. After 3–4 days, larvae were collected and preserved in 70% ethanol for transportation to the Kyoto University Primate Research Institute. Filariform, infective stage (L₃) larvae of *Strongyloides* spp. were morphologically identified under a stereoscope using standard keys (Anderson, 2000) and individually selected at random for DNA extraction (Nm = 20; Pp = 26; Mf = 33; Nl = 52; Tc = 39).

2.3. DNA extraction and phylogenetic reconstruction

Because feces were collected from the ground below primate groups or sleeping trees and not immediately following observed defecations, and because there are up to 10 primate species living sympatrically in the study area, we conducted host species identification for all fecal samples using molecular tools to avoid misidentification. Total genomic DNA was extracted from each sample using a QIAamp DNA stool mini kit (Qiagen, Japan), and a small fragment of the *cytochrome b* (*cytb*) gene was amplified for all samples, using the primer pair L14724/H15149 and PCR conditions described in Irwin et al. (1991).

DNA was also extracted from individual larvae using a QIAamp DNA micro kit (Qiagen, Japan). PCR was carried out in 15 µl reaction mixtures containing 1.5 µl template, 200 µM of each dNTP, 5 µM of each primer, 0.5 U of Ex-Taq polymerase (Takara) and the manufacturer-supplied reaction buffer. Thermal reactions were performed under an initial denaturation at 96 °C for 2 min, 35 cycles of denaturation at 96 °C for 15 s, annealing at 40 °C for 30 s, and extension at 72 °C for 90 s, followed by a final extension at 72 °C for 7 min. Partial sequences of the mitochondrial *cytochrome c oxidase subunit 1* (*cox1*) gene were amplified using primers StrCoxAfrF (5'-GTGGTTTGGTAATTGAATGTTT-3') and MH28R (5'-CTAACTACATAATAAGTATCATG-3') (Hasegawa et al., 2010; Hu et al., 2003). Products were sequenced in both directions on a 3130 Genetic Analyzer (Applied Biosystems, CA, USA) using the aforementioned primers.

Nucleotide sequences were aligned and adjusted in MEGA 6.06 (Tamura et al., 2013). Published sequences were included in the alignment to identify putative species, and phylogenetic trees were reconstructed using neighbor-joining (NJ) and maximum likelihood (ML) algorithms. Evolutionary distances were computed using the Tamura-Nei model, and bootstrap consensus trees were inferred from 1000 replicates.

2.4. Accession numbers

All sequence data were submitted to the DNA Data Bank of Japan (DDBJ) under accession numbers LC197946-LC198003 and LC317016-LC317043.

3. Results

Species identification was confirmed for all individual hosts. PCR on larval DNA generated amplicons of 716 bp for the *cox1* gene, indicating positive detection of *Strongyloides* spp. for 85 larvae (Nm = 18; Pp = 19; Mf = 18; Nl = 18; Tc = 12). Phylogenetic analyses for both algorithms gave similar results (S1). All parasite sequences from *P. pygmaeus*, *N. larvatus*, *M. fascicularis* and *T. cristatus* were identified as *S. fuelleborni* and grouped together with no correspondence to any particular host species, differing from sequences of *S. fuelleborni* published for other primate species from Japan and several countries in Africa (Fig. 2). Moreover, pairwise distances within the *S. fuelleborni* group indicate a wider cryptic diversity for Bornean isolates than that observed for Japanese and African isolates (Blouin, 2002; Hasegawa et al., 2010). All parasite sequences obtained from *N. menagensis* grouped together into two distinct haplotypes, varying significantly both from sequences isolated from other Bornean primates and from reference

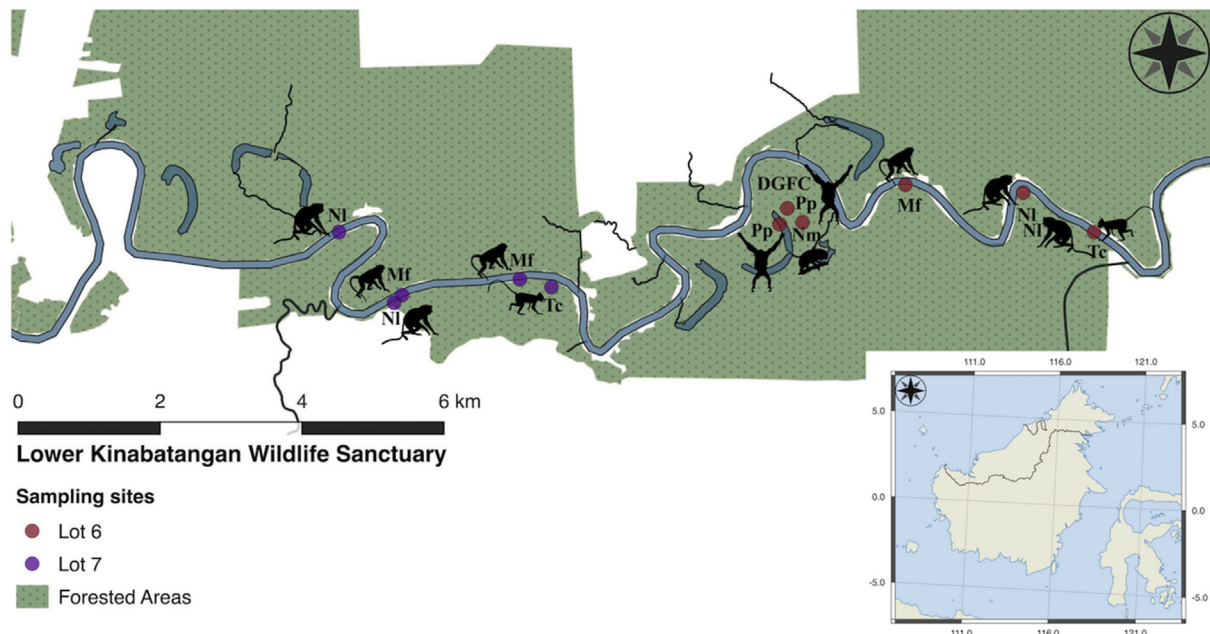


Fig. 1. Sampling sites within Lots 6 and 7 of the Lower Kinabatangan Wildlife Sanctuary, Malaysian Borneo (Nm = *Nycticebus menagensis*, Pp = *Pongo pygmaeus*, Mf = *Macaca fascicularis*, NI = *Nasalis larvatus*, Tc = *Trachypithecus cristatus*, DGFC = Danau Girang Field Centre).

sequences identified as *S. stercoralis*. Pairwise distances between all groups, suggest that the slow loris clade may represent a different lineage than that observed to infect free-living non-human primates, humans, domestic dogs and captive chimpanzees (Table 1).

4. Discussion

Parasites circulate in host communities in which species differ in exposure and susceptibility to infection, and thus identifying parasite community composition and transmission networks among species is essential to understand disease transmission and persistence (Fenton et al., 2015). Equally important, however, is to identify cryptic parasite diversity within these communities. Many studies have assumed sharing of parasitic nematodes within primate communities based on morphological descriptions alone, leading to overestimations of cross-infection among closely related species, and by extrapolation, disease risk among them (Gasser, 2006). The incorporation of molecular analyses has highlighted genetic differences among otherwise morphologically indistinguishable nematodes (Poulin, 2011; Ristau et al., 2013; Tan et al., 2012).

In the case of *Strongyloides*, there are still knowledge gaps regarding which species infect primate communities, with most reported cases of infection in nonhuman primates being attributed to *S. fuelleborni* (Chapman et al., 2006, 2007; Gillespie et al., 2005, Gillespie and Chapman, 2006, Gillespie and Chapman, 2008; Hasegawa et al., 2010, 2016; MacIntosh et al., 2010; Rondón et al., 2017; Solórzano-García and de León, 2017). Our study of *Strongyloides* spp. isolates suggests that elements of host generalism and specificity can operate in closely related parasites within the same host community. *S. fuelleborni* was identified in four of the five sympatric primates examined, with the exception of the slow loris. Isolates of *S. fuelleborni* from these Bornean primates showed considerable variation both within and between hosts at both the individual and the species level, clustering into three clades with no specific correspondence to any particular host or geographic location. Pairwise differences in *cox1* among interbreeding nematode strains have been reported to be less than 6%, while differences between distinct species is usually more than 10% (Blouin, 2002). If also true for *Strongyloides* spp., genetic differentiation between clades in the *S. fuelleborni* group would reflect ecological isolation, with shorter

distances between Asian clades and larger distances to the African clade. A more comprehensive investigation into *S. fuelleborni* in Bornean primates could help clarify the extent of its diversity in the whole primate community.

Most surprisingly, our phylogenetic analyses also identified a cryptic *Strongyloides* lineage within parasite sequences retrieved from the slow loris. These sequences did not cluster with those examined for other Bornean primates, nor with published sequences of *S. fuelleborni*, and may therefore represent a previously uncharacterized taxon, more closely aligned phylogenetically with *S. stercoralis*. By phylogenetic analysis of *cox1*, isolates of *S. stercoralis* cluster largely by species rather than by geographical regions, except in areas where zoonotic transmission occurs. Thus, alternatively, isolates from the slow loris clade may represent a cryptic subpopulation within a *S. stercoralis* group. High resolution data could help resolve whether these different clades represent different species/subspecies. *Strongyloides* spp. have previously been found in captive slow lorises [*Loris tardigradus*, *N. pygmaeus*, *N. coucang*: Sutherland-Smith and Stalis (2001); *N. pygmaeus*: Streicher (2004)] and in wild Javan slow lorises [*N. javanicus*: Rode-Margono et al. (2015)], but there is no information regarding parasite species diversity within the genus.

Slow lorises are unique in the Kinabatangan primate community as the only representative of the suborder Strepsirrhini, which diverged from the other primate suborder, Haplorrhini, approximately 87 mya (Perelman et al., 2011; Wilkinson et al., 2011). Unfortunately, we have no information concerning the phylogeny of *Strongyloides* spp. in other strepsirrhines, therefore we cannot at present determine whether this cryptic *Strongyloides* sp. is the product of co-speciation with its strepsirrhine hosts. Furthermore, we failed to observe *S. fuelleborni* and the cryptic *Strongyloides* coexisting in the same host, raising the question on how parasite species coexist and assemble into communities, e.g. through competitive exclusion, where closely related species are less likely to coexist. Until more samples can be obtained, we cannot conclude the absence of mixed infections in slow lorises, so this is targeted as a key area for future research.

With respect to the remainder of the primate community, further investigation is required to determine the potential of this novel strain to infect other host species, including local humans, and whether populations of slow lorises can enhance parasite persistence through

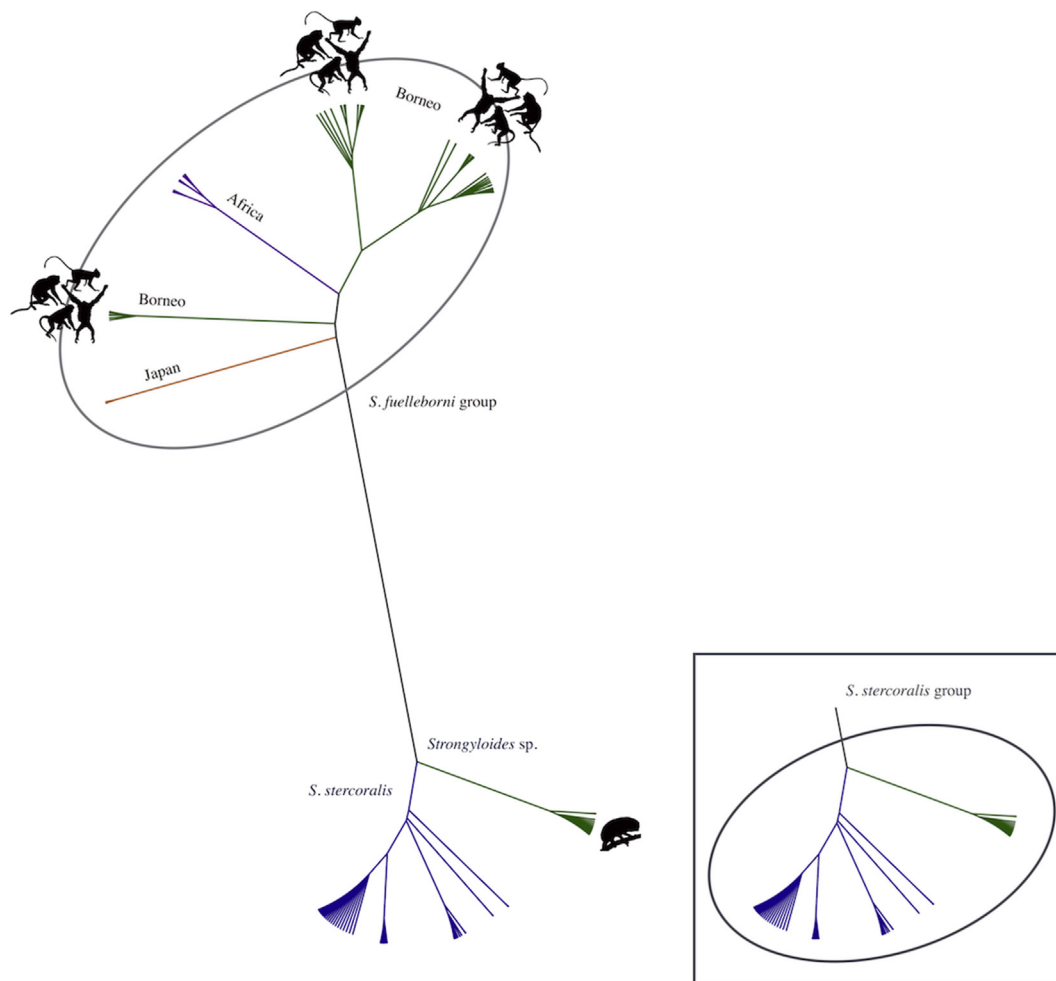


Fig. 2. Simplified neighbor-joining tree reconstructed from partial *cox1* gene (716 bp) sequences of *Strongyloides* spp. *S. fuelleborni* sequences for Bornean primates cluster within the *S. fuelleborni* group, together with previously described sequences for the parasite found in African and Japanese primates. The *S. stercoralis* cluster includes sequences from humans from Laos, Africa and Japan, captive chimpanzees, and dogs. The *Strongyloides* sp. cluster corresponds to sequences from the slow loris. An alternative hypothesis is presented next to the tree, where instead of representing a different species, *Strongyloides* sp. would be part of a cryptic assemblage within the *S. stercoralis* group.

Table 1
Between-group mean distances in *cox1* DNA sequences for 159 isolates of *Strongyloides* spp.

Parasite species	1	2	3	4	5	6	7
1 <i>Strongyloides</i> sp. (slow loris)							
2 <i>S. fuelleborni</i> (Borneo, clade 1 ^a)	0.179						
3 <i>S. fuelleborni</i> (Borneo, clade 2)	0.182	0.021					
4 <i>S. fuelleborni</i> (Borneo, clade 3)	0.186	0.056	0.061				
5 <i>S. fuelleborni</i> (Japan)	0.177	0.061	0.064	0.060			
6 <i>S. fuelleborni</i> (Africa)	0.208	0.082	0.084	0.098	0.087		
7 <i>S. stercoralis</i>	0.098	0.187	0.187	0.184	0.179	0.202	

^a Clades were defined based on the neighbor-joining tree presented in S1.

continuous cycles of autoinfection, similar to what happens during infection with *S. stercoralis*. The health consequences of strongyloidiasis might represent an important epidemiological scenario in the years to come, as lorises are popular targets for wildlife trade, increasing people's contact with potential pathogens, and promoting conditions

favorable for infectious disease transmission (Chomel et al., 2007; Karesh et al., 2005; Smith et al., 2012). Our results support the existence of generalist *Strongyloides* isolates, but also demonstrate that such generalism does not necessarily extend to the entire host community. Further studies are needed to determine the full extent of the parasite host range and whether there is spatial variation; what determines specificity and generalism in primate-parasite communities, and whether this holds true for other primate communities infected with *Strongyloides* spp. and other intestinal helminth parasites. Furthermore, the development of more robust molecular methods, such as metabarcoding, promises to benefit the assessment of parasite communities in the years to come (Avelo and Medlar, 2017; Avramenko et al., 2015; Tanaka et al., 2014).

With conflicting evidence concerning the relationship between biodiversity and zoonotic disease (Civitello et al., 2015; Keesing et al., 2010; Levi et al., 2016; Ostfeld and Keesing, 2012; Salkeld et al., 2013; Young et al., 2013), biodiverse and understudied areas represent a priority to understand how infectious diseases can impact wildlife conservation (Daszak et al., 2000; Dobson and Foufopoulos, 2001; Smith et al., 2009). Wild animals, and in particular wild primates, are the source of many organisms that can infect humans (Jones et al., 2008; Wolfe et al., 2007), and even within primates we still know very little about what parasites are in circulation (Cooper and Nunn, 2013; Hopkins and Nunn, 2007). Borneo is a good example of this scenario,

where remarkably little is yet known about parasite diversity and host range in free-living primate communities, despite being targeted as an area with a high likelihood of host shifting among parasites (Pedersen and Davies, 2009). At a time where human translocations and rapid environmental and climate change are dramatically modifying landscapes, we should expect alterations in parasite dynamics and the emergence of new host-parasite associations (Brooks and Hoberg, 2007). Understanding the extent to which parasites are distributed in the wild and the transmission ecology of multi-host parasites is challenging, yet fundamental, to promptly adapt to these changes.

Acknowledgments

The authors are grateful to the Sabah Wildlife Department and Sabah Biodiversity Centre (SaBC) for allowing us to conduct this research. We also thank Hirohisa Hirai for his support of this project. We owe a large debt to the staff and students/volunteers at the Danau Girang Field Centre for research assistance and support in the field, and to Audrey Adella Umbol for fundamental logistical support. We thank the Cleveland Zoological Society and Cleveland Metroparks Zoos, Columbus Zoo and Aquarium, Houston Zoo and Phoenix Zoo for supporting the nocturnal primates project. This study was financially supported by grants from Kyoto University through its Step-Up program (AM) and by the Japan Society for the Promotion of Science (#24770232 and #16H06181 to AM, #24255009 to Hirohisa Hirai, and #15H04283 to MO). Finally, LF was supported by the Japan Ministry of Education, Culture, Sports, Science and Technology (MEXT) through a Monbukagakusho scholarship (#140411), by a grant-in-aid from the Japan Society for the Promotion of Science (#446), and by the Leading Graduate Program in Primatology and Wildlife Science (PWS) of Kyoto University (JSPS-U04). Finally, we thank two anonymous reviewers whose comments and suggestions helped improve this manuscript.

Appendix A. Supplementary data

Supplementary data related to this article can be found at <http://dx.doi.org/10.1016/j.ijppaw.2018.03.003>.

References

- Aivelo, T., Medlar, A., 2017. Opportunities and challenges in metabarcoding approaches for helminth community identification in wild mammals. *Parasitol* 1–14.
- Anderson, R.C., 2000. *Nematode Parasites of Vertebrates. Their Transmission and Development*. CABI Publishing, UK.
- Avramenko, R.W., Redman, E.M., Lewis, R., Yazwinski, T.A., Wasmuth, J.D., Gilleard, J.S., 2015. Exploring the gastrointestinal nematode community: deep amplicon sequencing to quantify the species composition of parasitic nematode communities. *PLoS One* 10 (12), 1–18.
- Azmi, R., 1998. *Natural Vegetation of the Kinabatangan Floodplain. Part 1: Background and Preliminary Checklist*. Kota Kinabalu, Sabah: WWF-Malaysia. Report Available from: http://repository.wwf.org.my/technical_reports/N/NaturalVegetationOfTheKinabatanganFloodplainPart1.pdf.
- Blouin, M.S., 2002. Molecular prospecting for cryptic species of nematodes: mitochondrial DNA versus internal transcribed spacer. *Int. J. Parasitol.* 32, 527–531.
- Brooks, D.R., Hoberg, E.P., 2007. How will global climate change affect parasite-host assemblages? *Trends Parasitol.* 23 (12), 571–574.
- Cable, J., Barber, I., Boag, B., Ellison, A.R., Morgan, E.R., Murray, K., Pascoe, E.L., Sait, S.M., Wilson, A.J., Booth, M., 2017. Global change, parasite transmission and disease control: lessons from ecology. *Phil. Trans. R. Soc. B.* 372 (1719), 20160088.
- Chapman, C.A., Wasserman, M.D., Gillespie, T.R., Speirs, M.L., Lawes, M.J., Saj, T.L., Ziegler, T.E., 2006. Do food availability, parasitism, and stress have synergistic effects on red colobus populations living in forest fragments? *Am. J. Phys. Anthropol.* 131 (4), 525–534.
- Chapman, C.A., Saj, T.L., Snaith, T.V., 2007. Temporal dynamics of nutrition, parasitism, and stress in colobus monkeys: implications for population regulation and conservation. *Am. J. Phys. Anthropol.* 134 (2), 240–250.
- Chomel, B.B., Belotto, A., Meslin, F.X., 2007. Wildlife, exotic pets and emerging zoonoses. *Emerg. Infect. Dis.* 13 (1), 6–11.
- Civitello, D.J., Cohen, J., Fatima, H., Halstead, N.T., Liriano, J., McMahon, T.A., Ortega, C.N., Sauer, E.L., Sehgal, T., Young, S., Rohr, J.R., 2015. Biodiversity inhibits parasites: broad evidence for the dilution effect. *Proc. Natl. Acad. Sci. Unit. States Am.* 112 (28), 8667–8671.
- Cooper, N., Nunn, C.L., 2013. Identifying future zoonotic disease threats: where are the gaps in our understanding of primate infectious diseases? *Evol. Med. Public Health* 2013 (1), 27–36.
- Darling, S.T., 1911. *Strongyloides* infections in man and animals in the isthmian Canal Zone. *J. Exp. Med.* 14 (1), 1–24.
- Daszak, P., Cunningham, A.A., Hyatt, A.D., 2000. Emerging infectious disease of wildlife—threats to biodiversity and human health. *Science* 287 (5452), 443.
- de Melo, A.L., Mati, V.L.T., Martins, W.A., 2012. *Callithrix penicillata* as a nonhuman primate model for strongyloidiasis. *Primates* 53 (3), 303–309.
- Dobson, A., Foutopoulos, J., 2001. Emerging infectious pathogens of wildlife. *Philos. Trans. R. Soc. Lond. B Biol. Sci.* 356 (1411), 1001–1012.
- Dorris, M., Viney, M.E., Blaxter, M.L., 2002. Molecular phylogenetic analysis of the genus *Strongyloides* and related nematodes. *Int. J. Parasitol.* 32 (12), 1507–1517.
- Fenton, A., Streicker, D.G., Petchey, O.L., Pedersen, A.B., 2015. Are all hosts created equal? Partitioning host species contributions to parasite persistence in multihost communities. *Am. Nat.* 186 (5), 610–622.
- Gasser, R.B., 2006. Molecular tools—advances, opportunities and prospects. *Vet. Parasitol.* 136 (2), 69–89.
- Gillespie, T.R., Greiner, E.C., Chapman, C.A., 2005. Gastrointestinal parasites of the colobus monkeys of Uganda. *J. Parasitol.* 91 (3), 569–573.
- Gillespie, T.R., Chapman, C.A., 2006. Prediction of parasite infection dynamics in primate metapopulations based on attributes of forest fragmentation. *Conserv. Biol.* 20 (2), 441–448.
- Gillespie, T.R., Chapman, C.A., 2008. Forest fragmentation, the decline of an endangered primate, and changes in host-parasite interactions relative to an unfragmented forest. *Am. J. Primatol.* 70 (3), 222–230.
- Goldberg, T.L., Gillespie, T.R., Rwego, I.B., Estoff, E.L., Chapman, C.A., 2008. Forest fragmentation as cause of bacterial transmission among nonhuman primates, humans, and livestock, Uganda. *Emerg. Infect. Dis.* 14 (9), 1375.
- Harada, Y., Mori, O., 1995. A new method for culturing hookworm. *Yonago Acta Med.* 1 (3), 177–179.
- Harun, S., Dambul, R., Harun Abdullah, M., Mohamed, M., 2014. Spatial and seasonal variations in surface water quality of the lower Kinabatangan River catchment, Sabah, Malaysia. *J. Trop. Biol. Conserv.* 11, 117–131.
- Hasegawa, H., Sato, H., Fujita, S., Nguema, P.P.M., Nobusue, K., Miyagi, K., Kooriyama, T., Takenoshita, Y., Noda, S., Sato, A., Morimoto, A., 2010. Molecular identification of the causative agent of human strongyloidiasis acquired in Tanzania: dispersal and diversity of *Strongyloides* spp. and their hosts. *Parasitol. Int.* 59 (3), 407–413.
- Hasegawa, H., Kalousova, B., McLennan, M.R., Modry, D., Profousova-Psenkova, I., Shutt-Phillips, K.A., Todd, A., Huffman, M.A., Petzelkova, K.J., 2016. *Strongyloides* infections of humans and great apes in Dzanga-Sangha Protected Areas, Central African Republic and in degraded forest fragments in Bulindi, Uganda. *Parasitol. Int.* 65 (5), 367–370.
- Hassell, J.M., Begon, M., Ward, M.J., Fèvre, E.M., 2017. Urbanization and disease emergence: dynamics at the wildlife-livestock-human interface. *Trends Ecol. Evol.* 32 (1), 55–67.
- Hira, P.R., Patel, B.G., 1977. *Strongyloides fülleborni* infections in man in Zambia. *Am. J. Trop. Med. Hyg.* 26 (4), 640–643.
- Hopkins, M.E., Nunn, C.L., 2007. A global gap analysis of infectious agents in wild primates. *Divers. Distrib.* 13 (5), 561–572.
- Hu, M., Chilton, N.B., Gasser, R.B., 2003. The mitochondrial genome of *Strongyloides stercoralis* (Nematoda) – idiosyncratic gene order and evolutionary implications. *Int. J. Parasitol.* 33 (12), 1393–1408.
- Irwin, D.M., Kocher, T.D., Wilson, A.C., 1991. Evolution of the cytochrome b gene of mammals. *J. Mol. Evol.* 32 (2), 128–144.
- Jones, K.E., Patel, N.G., Levy, M.A., Storeygard, A., Balk, D., Gittleman, J.L., Daszak, P., 2008. Global trends in emerging infectious diseases. *Nature* 451 (7181), 990–993.
- Karesh, W.B., Cook, R.A., Bennet, E.L., Newcomb, J., 2005. Wildlife trade and global disease emergence. *Emerg. Infect. Dis.* 11 (7), 1000–1002.
- Keesing, F., Belden, L.K., Daszak, P., Dobson, A., Harvell, C.D., Holt, R.D., Hudson, P., Jolles, A., Jones, K.E., Mitchell, C.E., Myers, S.S., 2010. Impacts of biodiversity on the emergence and transmission of infectious diseases. *Nature* 468 (7324), 647–652.
- Kelly, A., Little, M.D., Voge, M., 1976. *Strongyloides fülleborni*-like infections in man in Papua New Guinea. *Am. J. Trop. Med. Hyg.* 25 (5), 694–699.
- Labes, E.M., Nurcahyo, W., Deplazes, P., Mathis, A., 2011. Genetic characterization of *Strongyloides* spp. from captive, semi-captive and wild bornean orangutans (*Pongo pygmaeus*) in central and east Kalimantan, Borneo, Indonesia. *Parasitology* 138 (11), 1417–1422.
- Levi, T., Massey, A.L., Holt, R.D., Keesing, F., Ostfeld, R., Peres, C.A., 2016. Does biodiversity protect humans against infectious disease? *Comment. Ecology* 97 (2), 536–546.
- Linstow, O., 1905. *Strongyloides fülleborni*, n. sp. *Centralbakteriell Parasitenk. Infektionskrankh.* 38 (1), 532–533.
- Little, M.D., 1966. Comparative morphology of six species of *Strongyloides* (Nematoda) and redefinition of the genus. *J. Parasitol.* 69–84.
- MacIntosh, A.J., Hernandez, A.D., Huffman, M.A., 2010. Host age, sex, and reproductive seasonality affect nematode parasitism in wild Japanese macaques. *Primates* 51 (4), 353–364.
- Morgan, E.R., Milner-Gulland, E.J., Torgerson, P.R., Medley, G.F., 2004. Ruminating on complexity: macroparasites of wildlife and livestock. *Trends Ecol. Evol.* 19 (4), 181–188.
- Morgan, E.R., Lundervold, M., Medley, G.F., Shaikhenov, B.S., Torgerson, P.R., Milner-Gulland, E.J., 2006. Assessing risks of disease transmission between wildlife and livestock: the Saiga antelope as a case study. *Biol. Conserv.* 131 (2), 244–254.
- Nantima, N., Ocaido, M., Ouma, E., Davies, J., Dione, M., Okoth, E., Mugisha, A., Bishop, R., 2015. Risk factors associated with occurrence of African swine fever outbreaks in

- smallholder pig farms in four districts along the Uganda-Kenya border. *Trop. Anim. Health Prod.* 47 (3), 589–595.
- Olsen, A., van Lieshout, L., Marti, H., Polderman, T., Polman, K., Steinmann, P., Stothard, R., Thybo, S., Verweij, J.J., Magnussen, P., 2009. Strongyloidiasis—the most neglected of the neglected tropical diseases? *Trans. R. Soc. Trop. Med. Hyg.* 103 (10), 967–972.
- Ostfeld, R.S., Keesing, F., 2012. Effects of host diversity on infectious disease. *Annu. Rev. Ecol. Syst.* 43 (1), 157–182.
- Pampiglione, S., Ricciardi, M.L., 1971. The presence of *Strongyloides fulleborni* von Linstow, 1905, in man in Central and East Africa. *Parassitologia* 13 (1), 257–269.
- Pedersen, A.B., Davies, T.J., 2009. Cross-species pathogen transmission and disease emergence in primates. *EcoHealth* 6 (4), 496–508.
- Perelman, P., Johnson, W.E., Roos, C., Seuánez, H.N., Horvath, J.E., Moreira, M.A., Kessing, B., Pontius, J., Roelke, M., Rumpfer, Y., Schneider, M.P.C., 2011. A molecular phylogeny of living primates. *PLoS Genet.* 7 (3), e1001342.
- Poulin, R., 2011. Uneven distribution of cryptic diversity among higher taxa of parasitic worms. *Biol. Lett.* 7 (2), 241–244.
- Ristau, K., Steinfartz, S., Traunspurger, W., 2013. First evidence of cryptic species diversity and significant population structure in a widespread freshwater nematode morphospecies (*Tobrilus gracilis*). *Mol. Ecol.* 22 (17), 4562–4575.
- Rode-Margono, E., Albers, M., Wirdateti, Nekaris, K.A.I., 2015. Gastrointestinal parasites and ectoparasites in wild Javan slow loris (*Nycticebus javanicus*), and implications for captivity and animal rescue. *JZAR* 3 (3), 80–86.
- Rondón, S., Ortiz, M., León, C., Galvis, N., Link, A., González, C., 2017. Seasonality, richness and prevalence of intestinal parasites of three neotropical primates (*Alouatta seniculus*, *Ateles hybridus* and *Cebus versicolor*) in a fragmented forest in Colombia. *Int. J. Parasitol. Parasites Wildl* 6 (3), 202–208.
- Salgado Lynn, M., 2010. Primate Viability in a Fragmented Landscape: Genetic Diversity and Parasite Burden of Long-tailed Macaques and Proboscis Monkeys in the Lower Kinabatangan Floodplain, Sabah, Malaysia. Ph. D. Thesis Cardiff University Available from: <http://orca.cf.ac.uk/55098/1/U585487.pdf>.
- Salkeld, D.J., Padgett, K.A., Jones, J.H., 2013. A meta-analysis suggesting that the relationship between biodiversity and risk of zoonotic pathogen transmission is idiosyncratic. *Ecol. Lett.* 16 (5), 679–686.
- Smith, K.F., Acevedo-Whitehouse, K., Pedersen, A.B., 2009. The role of infectious diseases in biological conservation. *Anim. Conserv.* 12 (1), 1–12.
- Smith, K.M., Anthony, S.J., Switzer, W.M., Epstein, J.H., Seimon, T., Jia, H., Sanchez, M.D., Huynh, T.T., Galland, G.G., Shapiro, S.E., Sleeman, J.M., 2012. Zoonotic viruses associated with illegally imported wildlife products. *PLoS One* 7 (1), e29505.
- Solórzano-García, B., de León, G.P., 2017. Helminth parasites of howler and spider monkeys in Mexico: insights into molecular diagnostic methods and their importance for zoonotic diseases and host conservation. *Int. J. Parasitol. Parasites Wildl* 6 (2), 76–84.
- Speare, R., 1989. Identification of species of *Strongyloides*. In: Grove, D.I. (Ed.), *Strongyloidiasis - a Major Roundworm Infection of Man*. Taylor & Francis, London, pp. 11–84.
- Streicher, U., 2004. Aspects of Ecology and Conservation of the Pygmy loris *Nycticebus pygmaeus* in Vietnam. Ph.D. Thesis Ludwig-Maximilians Universität Available from: http://www.loris-conservation.org/database/Coauthors/Uli/Streicher_2004.pdf.
- Sutherland-Smith, M., Stalis, I., 2001. Review of Loris clinical information and pathological data from the San Diego Zoo: 1982-1995. In: Fitch-Snyder, H., Schulze, H., Larson, L. (Eds.), *Management of Lorises in Captivity. A Husbandry Manual for Asian Lorises (Nycticebus and Loris spp.)*. Zoological Society of San Diego, San Diego, CA, pp. 60–70.
- Tamura, K., Stecher, G., Peterson, D., Filipowski, A., Kumar, S., 2013. MEGA6: molecular evolutionary genetics analysis version 6.0. *Mol. Biol. Evol.* 30 (12), 2725–2729.
- Tan, N., Chilton, N.B., Huby-Chilton, F., Jex, A.R., Gasser, R.B., Beveridge, I., 2012. Molecular evidence for a cryptic species within the parasitic nematode *Macronema comani* (Strongyloidea: cloacininae). *Mol. Cell. Probes* 26 (4), 170–174.
- Tanaka, R., Hino, A., Tsai, I.J., Palomares-Rius, J.E., Yoshida, A., Ogura, Y., Hayashi, T., Maruyama, H., Kikuchi, T., 2014. Assessment of helminth biodiversity in wild rats using 18S rDNA based metagenomics. *PLoS One* 9 (10), e110769.
- Viney, M., Lok, J.B., 2015. The biology of *Strongyloides* spp. [cited 30 August 2017] In: Wormbook [Internet]. The *C. elegans* Research Community, <http://dx.doi.org/10.1895/wormbook.1.141.2>. Available from: <http://www.wormbook.org/chapters/www.genomesStrongyloides.2/strongyloides.2.html>.
- Walker, J.G., Morgan, E.R., 2014. Generalists at the interface: nematode transmission between wild and domestic ungulates. *Int. J. Parasitol. Parasites Wildl* 3 (3), 242–250.
- Wilkinson, R.D., Steiper, M.E., Soligo, C., Martin, R.D., Yang, Z., Tavaré, S., 2011. Dating primate divergences through an integrated analysis of palaeontological and molecular data. *Syst. Biol.* 60 (1), 16–31.
- Wolfe, N.D., Dunavan, C.P., Diamond, J., 2007. Origins of major human infectious diseases. *Nature* 447 (7142), 279–283.
- World Health Organization, 2012. Research Priorities for Helminth Infections: Technical Report of the TDR Disease Reference Group on Helminth Infections. Available from: http://apps.who.int/iris/bitstream/10665/75922/1/WHO_TRS_972_eng.pdf.
- Young, H., Griffin, R.H., Wood, C.L., Nunn, C.L., 2013. Does habitat disturbance increase infectious disease risk for primates? *Ecol. Lett.* 16 (5), 656–663.