

This is an Open Access document downloaded from ORCA, Cardiff University's institutional repository: <https://orca.cardiff.ac.uk/id/eprint/110610/>

This is the author's version of a work that was submitted to / accepted for publication.

Citation for final published version:

Jiao, Yilai, Adedigba, Abdul-Lateef, He, Qian , Miedziak, Peter J., Brett, Gemma Louise, Dummer, Nicholas F. , Perdjon, Michal , Liu, Jinmin and Hutchings, Graham John 2018. Inter-connected and open pore hierarchical TS-1 with controlled framework titanium for catalytic cyclohexene epoxidation. *Catalysis Science and Technology* 8 , pp. 2211-2217. 10.1039/C7CY02571H

Publishers page: <http://dx.doi.org/10.1039/C7CY02571H>

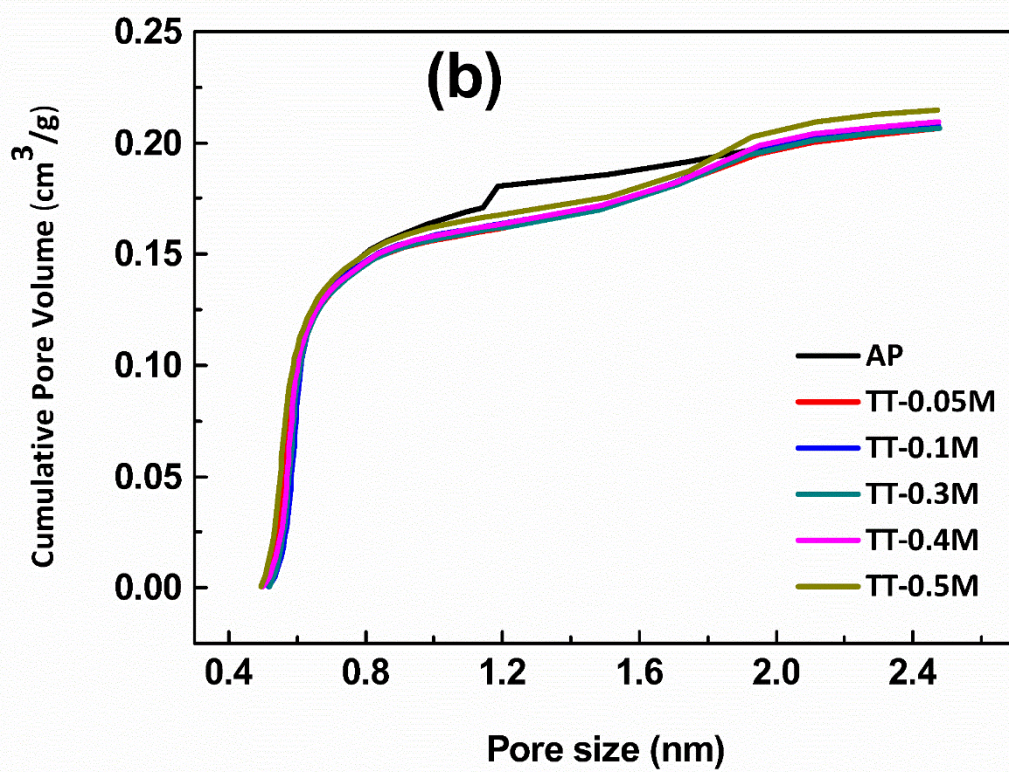
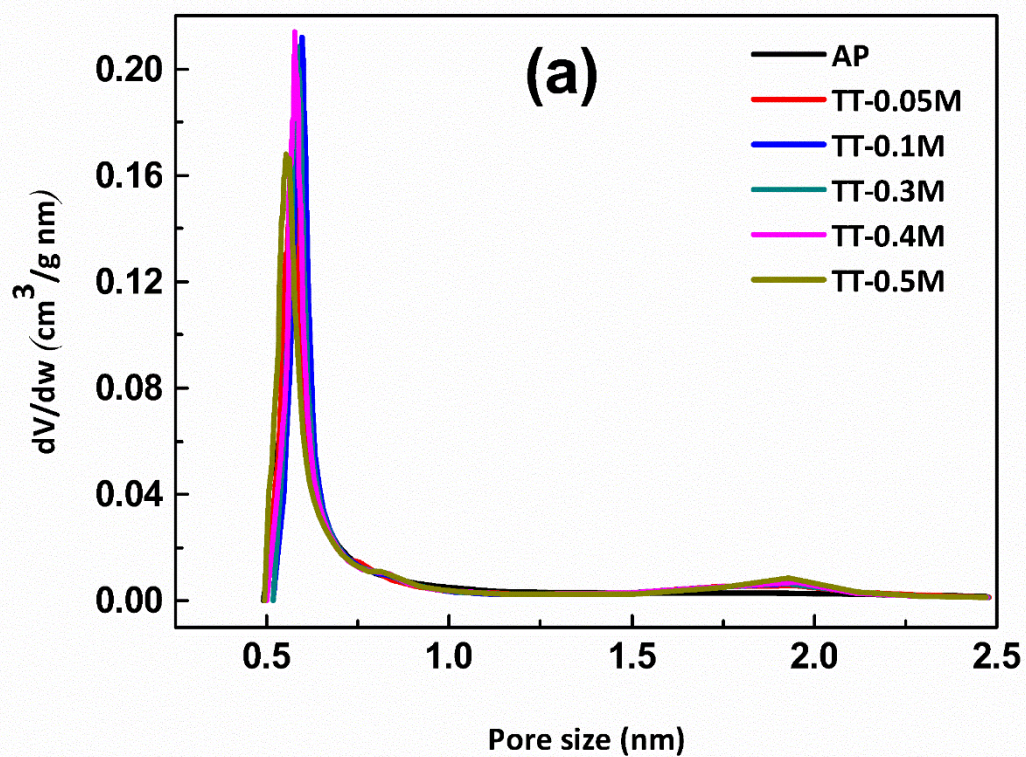
Please note:

Changes made as a result of publishing processes such as copy-editing, formatting and page numbers may not be reflected in this version. For the definitive version of this publication, please refer to the published source. You are advised to consult the publisher's version if you wish to cite this paper.

This version is being made available in accordance with publisher policies. See <http://orca.cf.ac.uk/policies.html> for usage policies. Copyright and moral rights for publications made available in ORCA are retained by the copyright holders.



Supporting Information



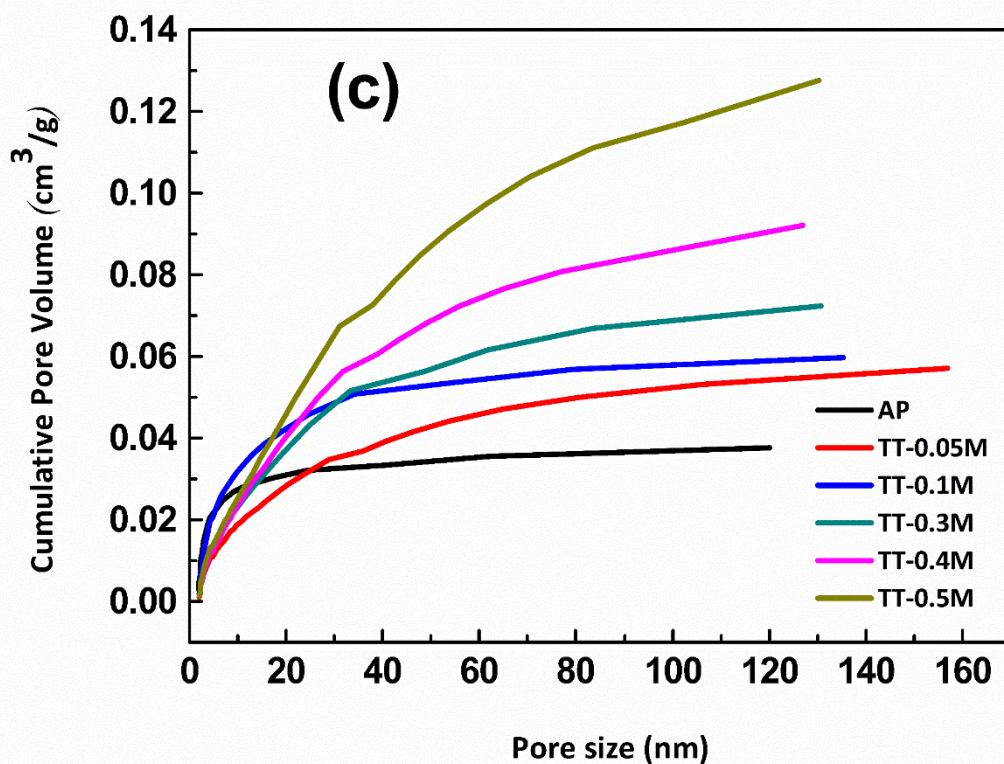
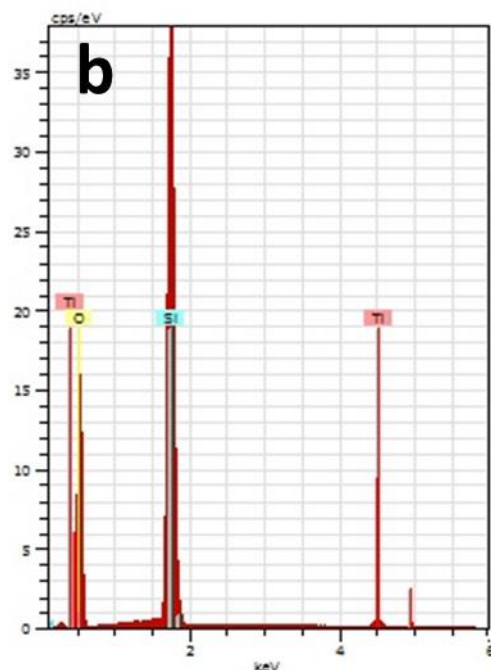
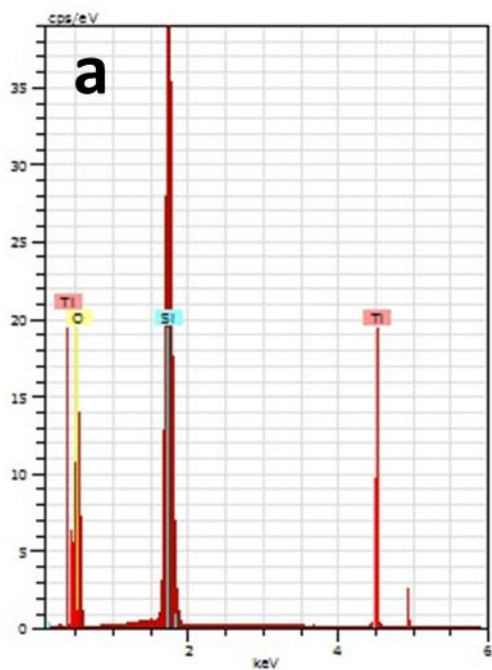


Figure S1. Pore size distribution of as prepared and TPAOH treated samples (a) H-K differential Pore Volume Plot, (b) H-K cumulative pore volume and (c) BJH cumulative pore volume



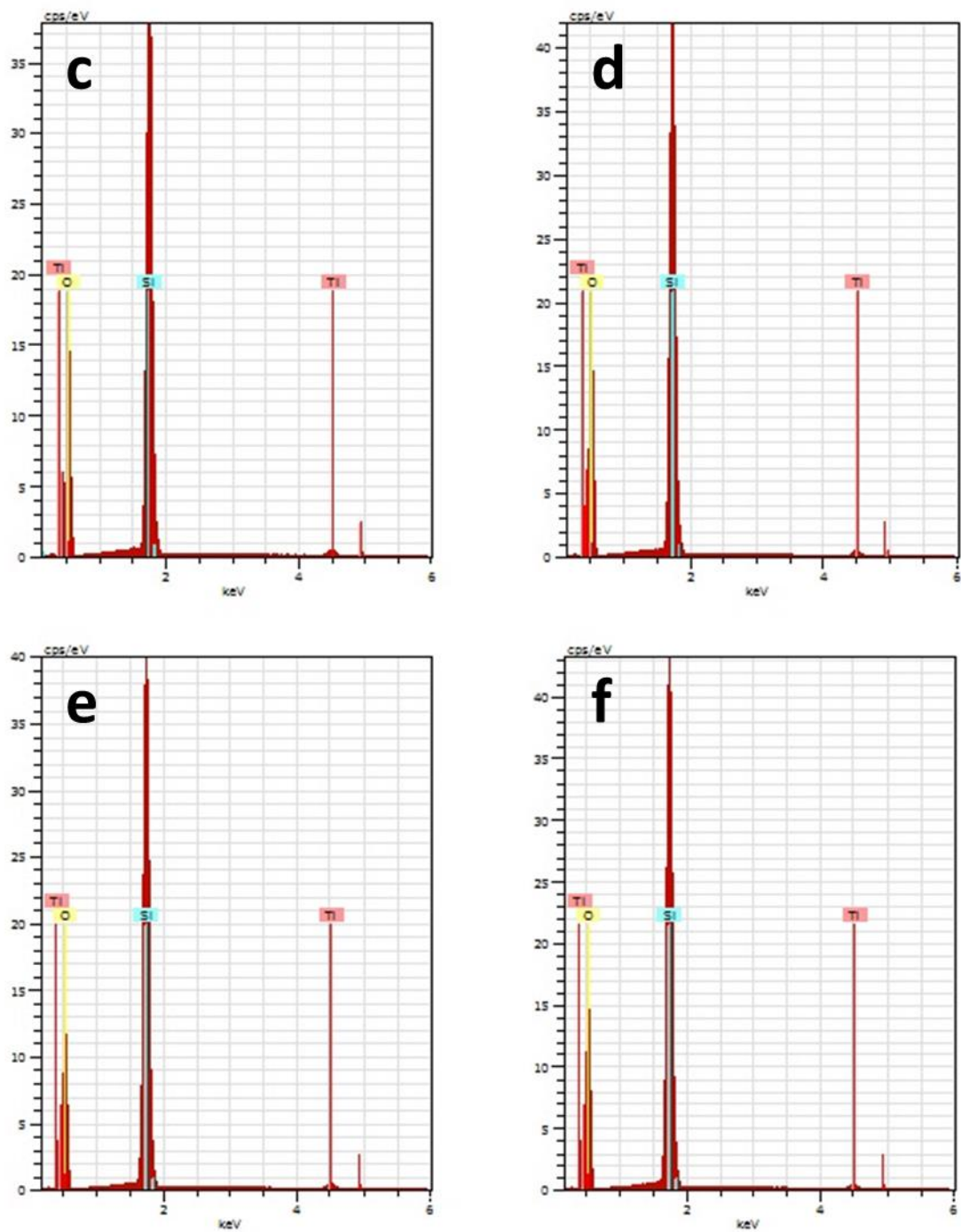


Figure S2. EDS patterns of as prepared and TPAOH treated samples (a) as prepared TS-1, (b) TT-0.05M, (c) TT-0.1M, (d) TT-0.3M, (e) TT-0.4M and (f) TT-0.5M.

Table S1. Summary of the elements distribution of as-prepared (AP) and TPAOH modified (TT-XM) TS-1 samples.

Elements*	AP	TT-0.05M	TT-0.1M	TT-0.3M	TT-0.4M	TT-0.5M
O	66.54	68.10	67.39	69.18	63.58	66.17
Si	32.75	31.15	31.89	30.11	35.59	33.07
Ti	0.71	0.75	0.72	0.71	0.84	0.76

* The elements were calculated by atom (at. %)

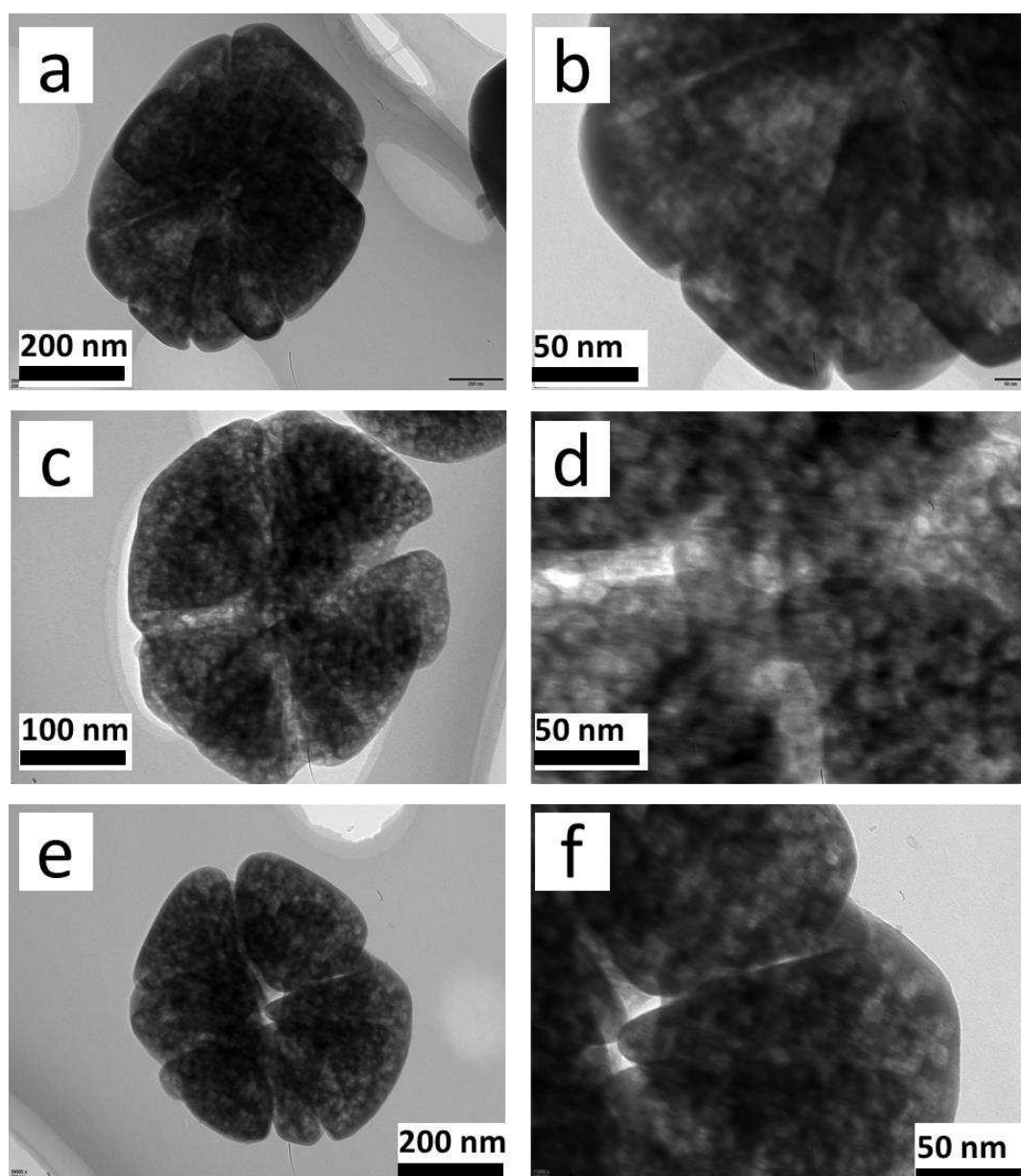


Figure S3 TEM image of sample TT-0.45M (a & b), TT-0.5M (c & d) and TT-0.6M (e & f)

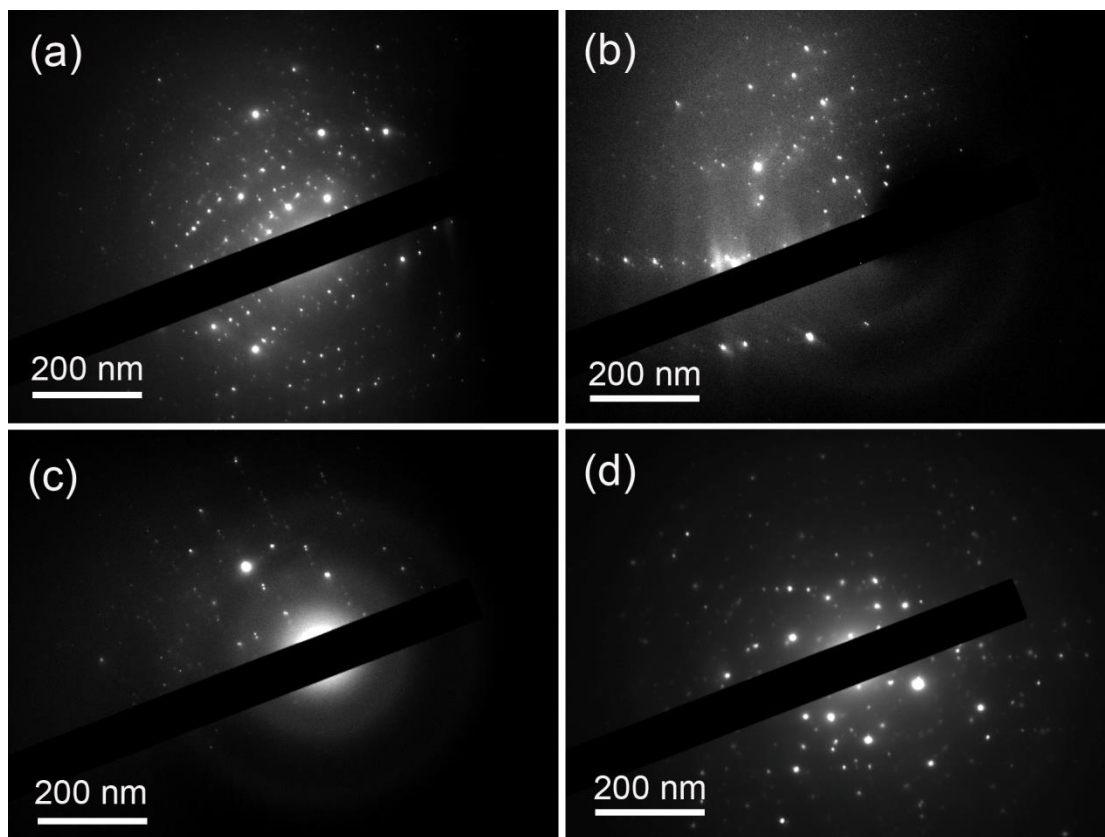


Figure S4. SAED patterns of as prepared and TPAOH treated samples (a) as prepared TS-1, (b) TT-0.1M, (c) TT-0.4M and (d) TT-0.5 M