

This is an Open Access document downloaded from ORCA, Cardiff University's institutional repository: <https://orca.cardiff.ac.uk/id/eprint/115374/>

This is the author's version of a work that was submitted to / accepted for publication.

Citation for final published version:

Thiry, Valentine, Clauss, Marcus, Stark, Danica, Beudels-Jamar, Roseline C., Vercauteren Drubbel, Régine, Nathan, Senthilvel K.S.S., Goossens, Benoit and Vercauteren, Martine 2018. Faecal particle size in free-ranging proboscis monkeys, *Nasalis larvatus*: variation between seasons. *Folia Primatologica* 89 (5) , pp. 327-334. 10.1159/000490794

Publishers page: <http://dx.doi.org/10.1159/000490794>

Please note:

Changes made as a result of publishing processes such as copy-editing, formatting and page numbers may not be reflected in this version. For the definitive version of this publication, please refer to the published source. You are advised to consult the publisher's version if you wish to cite this paper.

This version is being made available in accordance with publisher policies. See <http://orca.cf.ac.uk/policies.html> for usage policies. Copyright and moral rights for publications made available in ORCA are retained by the copyright holders.



1 **Title:**

2 Faecal particle size in free-ranging proboscis monkeys, *Nasalis larvatus*: Variation between  
3 seasons

4  
5 **Authors:**

6 Valentine Thiry<sup>ab</sup>, Marcus Clauss<sup>c</sup>, Danica J. Stark<sup>de</sup>, Roseline C. Beudels-Jamar<sup>b</sup>,  
7 Régine Vercauteren Drubbel<sup>a</sup>, Senthilvel K. S. S. Nathan<sup>f</sup>, Benoît Goossens<sup>defg</sup>,  
8 Martine Vercauteren<sup>a</sup>

9  
10 <sup>a</sup> Anthropology and Human Genetics Unit, Université libre de Bruxelles, Brussels, Belgium;

11 <sup>b</sup> Conservation Biology Unit, Education and Nature, Royal Belgian Institute of Natural Sciences,  
12 Brussels, Belgium;

13 <sup>c</sup> Clinic for Zoo Animals, Exotic Pets and Wildlife, Vetsuisse Faculty, University of Zurich, Zurich,  
14 Switzerland;

15 <sup>d</sup> Organisms and Environment Division, Cardiff School of Biosciences, Cardiff University, Sir Martin  
16 Evans Building, Museum Avenue, Cardiff CF10 3AX, United Kingdom;

17 <sup>e</sup> Danau Girang Field Centre c/o Sabah Wildlife Department, Wisma Muis, Kota Kinabalu, Sabah  
18 88100, Malaysia;

19 <sup>f</sup> Sabah Wildlife Department, Kota Kinabalu, Sabah, Malaysia;

20 <sup>g</sup> Sustainable Places Research Institute, Cardiff University, 33 Park Place, Cardiff CF10 3BA, UK

21

22 **Short title:** Faecal particle size in proboscis monkeys

23

24 **Corresponding author:** Valentine Thiry

25 Postal address : 64, Avenue des Grenadiers, 1050 Brussels, Belgium.

26 Phone : 0032473563831

27 e-mail : valentinethiry89@gmail.com

28 **Abstract**

29 Reducing the size of food particles is crucial for herbivores. Seasonal dietary changes are  
30 known to influence animals' chewing efficiency. Proboscis monkeys (*Nasalis larvatus*) are  
31 foregut fermenters, with a high chewing efficiency allowing them to achieve very fine faecal  
32 particles. In this study, we investigated how proboscis monkeys' chewing efficiency varies  
33 among wet and dry seasons, hypothesising differences possibly related to diet change. Faecal  
34 particle size analysis is an established approach to estimate chewing efficiency in mammalian  
35 herbivores. We analysed 113 proboscis monkey faecal samples collected in the Lower  
36 Kinabatangan Wildlife Sanctuary, between 2015 and 2017. By following standard sieve  
37 analysis protocols, we measured a mean particle size  $MPS_{(0.025-8)}$  of  $0.45 \pm 0.14$  mm, and  
38 confirmed a previous result that proboscis monkeys have a very low faecal MPS. This study  
39 highlights a seasonal influence on proboscis monkeys' chewing efficiency, with smaller MPS  
40 (better chewing efficiency) during the wet season. During that time of the year, individuals  
41 may potentially change their diet, as all faecal samples contained intact seeds. Whether the  
42 seasonal MPS difference in proboscis monkeys is smaller than in other colobines due to their  
43 'rumination' strategy remains to be investigated.

44

45 **Keywords**

46 *Nasalis larvatus*, chewing efficiency, nutritional ecology, forestomach, diet change, foregut  
47 fermenter

48

49 **Number of words in the manuscript:** 3365

50

## 51 **Introduction**

52 Reducing the size of food particles is crucial in herbivores that rely on gut microbiota  
53 to digest plant components. In herbivores, fibre digestion relies on digesta retention and  
54 particle size. To accomplish the same digestibility, large digesta particles will need longer  
55 retention times than smaller ones [Bjorndal et al., 1990]. Measuring faecal particle size by wet  
56 sieving analysis, is an established non-invasive approach to determine the chewing efficiency  
57 of mammals [Fritz et al., 2009]. Several studies focused on faecal particle size in mammals  
58 [Fritz et al., 2009; Clauss et al., 2015], or more specifically in ruminants [Renecker and  
59 Hudson, 1990; Clauss et al., 2002] and primates [Dunbar and Bose, 1991; Matsuda et al.,  
60 2014; Venkataraman et al., 2014; Weary et al., 2017]. Across mammals, the size of faecal  
61 particles usually increases with animal body mass [Fritz et al., 2009]. However, among  
62 primates, the proboscis monkey (*Nasalis larvatus*) displays a particularly small mean particle  
63 size (MPS) for its average body mass (15 kg) [Matsuda et al., 2014]. Proboscis monkeys are  
64 foregut fermenters [Matsuda et al., 2014]. Like other colobine primates, they have a  
65 sacculated forestomach where the food is fermented [Bauchop, and Martucci, 1968; Milton,  
66 1993]. Regurgitation and remastication (i.e. rumination) has been observed in wild proboscis  
67 monkeys [Matsuda et al., 2011a]. Whether this facultative rumination strategy explains how  
68 proboscis monkeys achieve particularly fine faecal particles remains unclear [Matsuda et al.,  
69 2014].

70 Seasonal dietary change and dental wear are known to influence animals' chewing  
71 efficiency [Venkataraman et al., 2014]. Within a species, faecal particle size can vary in  
72 relation to diet [Renecker and Hudson, 1990] or seasons [Nygren and Hofmann, 1990]. For  
73 instance, in gelada baboons (*Theropithecus gelada*), chewing efficiency decreases during the  
74 dry season when individuals feed on tougher non-preferred food items, with a more distinct  
75 effect in older individuals [Venkataraman et al., 2014]. The opposite is observed in

76 frugivorous chimpanzees (*Pan troglodytes schweinfurthii*): MPS is higher when chimpanzees  
77 feed on drupe fruits (preferred foods) than on figs (non-preferred foods) [Weary et al., 2017].  
78 The authors suggested that chewing efficiency might be less critical in frugivores than in  
79 typical folivores, because they did not observe an effect of age on MPS.

80         With their natural diet, proboscis monkeys are excellent candidates to investigate how  
81 MPS might change throughout the year. While proboscis monkeys were first considered  
82 essentially folivores, it is now recognised that they preferentially feed on unripe fruits/seeds  
83 when they are available [Matsuda et al., 2009]. The present study investigates how proboscis  
84 monkeys' chewing efficiency varies among wet and dry seasons. We hypothesised that  
85 proboscis monkeys will achieve a higher chewing efficiency (MPS will decrease) during the  
86 season when individuals are able to consume their preferred food.

87         Moreover, we investigated some methodological aspects of sieve analysis. Extending  
88 the sieve column (adding larger top or smaller bottom sieves) is known to influence MPS  
89 measurements [Fritz et al., 2012], as well as including the weight of unchewed items (i.e.  
90 large seeds) and maximum particle length (MPL) in the MPS calculation [Weary et al., 2017].  
91 Therefore, we combined various sets of sieves, with or without the MPL, and assessed the  
92 impact on MPS measurements.

93

## 94 **Material and Methods**

### 95         Study site

96 Our study took place in the Lower Kinabatangan Floodplain (5°20'-05°45' N, 117°40'-  
97 118°30' E), in Eastern Sabah (Malaysian Borneo), between 2015 and 2017. Daily  
98 temperatures and rainfall were measured at the research station. Below we will refer to dry  
99 season (May-June-July) where the mean monthly rainfall is 120 ( $\pm$  SD=100) mm and to the

100 wet season (November-February) where it reaches 243 ( $\pm$ SD=104) mm. Mean minimum and  
101 maximum temperatures reached 24.4 ( $\pm$ SD=0.6) and 30 ( $\pm$ SD=1.7) °C, respectively.

102

### 103 Faecal sampling

104 In riverine forests, proboscis monkeys are known to take refuge along riverbanks to spend the  
105 night [Matsuda et al., 2011b]. During this study, we conducted boat-based surveys along the  
106 Kinabatangan River, in the late afternoon, to find proboscis monkey groups settled at their  
107 sleeping sites. To avoid sampling the same group multiple times, we searched for proboscis  
108 monkey groups in different parts (North and South riverbanks) along a pre-established 21 km  
109 transect in a month. In the morning, we travelled back to the group's location of the previous  
110 evening. Once the group left the riverside to forage further inland, we moved to the riverbank  
111 to search for fresh faecal samples that had fallen under sleeping trees. We collected large  
112 samples, presumed to belong to adult individuals (undistinguished sex). Between May and  
113 July 2015, January and February 2016, and November 2016 and February 2017, two faecal  
114 samples were collected per group and placed in separate tubes, to perform two different  
115 analyses: manual and wet sieving analyses. 137 samples ( $15 \pm 5$  samples/month) were  
116 analysed by the manual method and 113 faecal samples ( $13 \pm 6$  samples/month) by wet  
117 sieving method.

118

### 119 Manual analyses

120 Faecal samples were cleaned with water in a 0.4 mm mesh strainer to discard faecal matter.  
121 The remaining digested items were searched for intact seeds. Percentages of samples  
122 containing seeds were used to assess seasonal changes.

123

### 124 Wet sieving analyses

125 Faecal samples were stored in a tube with 70% ethanol [Matsuda et al., 2014]. They were  
126 analysed using the standard wet sieving method [Fritz et al., 2012]. Before sieving, each  
127 sample was suspended in a beaker filled with water that was stirred continuously for 12 hours.  
128 The sample was then poured over a series of 10 sieves with mesh size of 8, 4, 2, 1, 0.5, 0.25,  
129 0.125, 0.63, 0.04 and 0.025 mm (Retsch AS 200 digit, Haan, Germany). We conducted the  
130 sieving analysis for 10 minutes with an amplitude of 2 mm and a water flow of approximately  
131 2 l/min. If a particle was retained on the largest sieve, its size was recorded as the maximum  
132 particle size. Particles retained on each sieve were transferred onto pre-weighed petri dishes  
133 and dried at 103°C overnight. After cooling in a desiccator, petri dishes were weighed with an  
134 analysis balance with measuring accuracy of 1 mg (Kern AEJ 220-4M, Kern, Balingen,  
135 Germany). When large seeds ( $\geq 2$  mm) were retained intact in sieves, they were removed,  
136 weighed and subtracted from the respective sieve weight. However, the smaller ( $< 2$  mm) and  
137 numerous seeds, such as *Ficus* and *Nauclea* seeds, were logistically impossible to remove  
138 from the analysis [Weary et al., 2017].

139

140 Among various indices, the discrete mean has been proposed as a standard to describe the  
141 MPS value obtained from sieving analyses [Fritz et al., 2012]. To compare our results with a  
142 previous study conducted on proboscis monkey's faecal particle sizes [Matsuda et al., 2014],  
143 we excluded the two smallest sieves (mesh sizes: 0.040 and 0.025 mm) from the MPS  
144 calculation, as they were not used by Matsuda et al. [2014]. Although the latter study used a  
145 larger top sieve (16 mm) than we did, no particles were ever retained on it.

146

#### 147 Statistical analyses

148 We carried out t-tests on log-transformed data to compare  $MPS_{(0.025-8mm)}$  values between dry  
149 and wet seasons. We compared MPS values calculated for 28 faecal samples, with or without

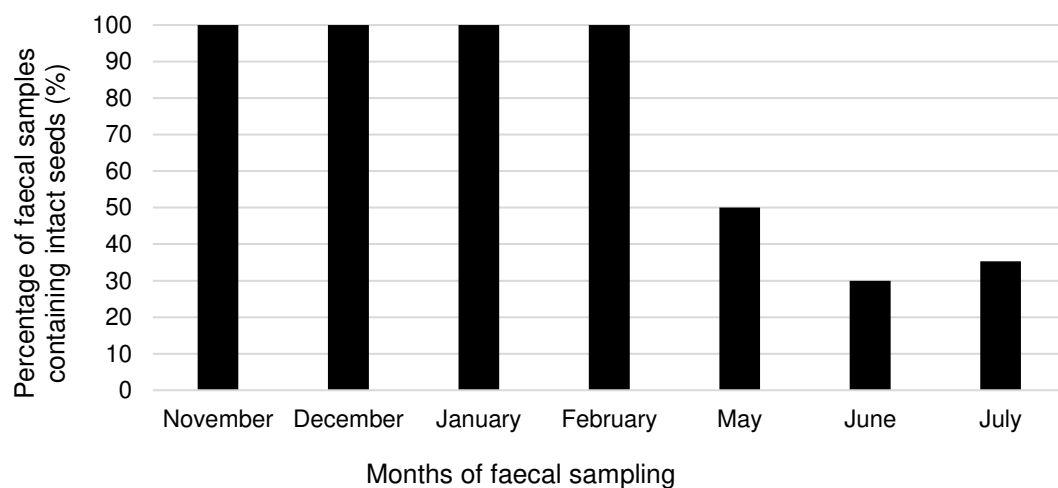
150 considering the length of the maximum particles and using series of 10 (0.025-8 mm) or 8  
151 (0.063-8 mm) sieves. To assess the difference between those four MPS measurements, we  
152 performed a related-samples Wilcoxon signed rank test between all pairs of MPS values,  
153 using the Bonferroni adjustment (for multiple comparisons). R 3.4.0 [R Development Core  
154 Team, 2016] was used for all statistical analyses, with statistical significance of  $p < 0.05$ .

155

## 156 **Results**

### 157 **Manual analyses**

158 By cleaning fresh faeces (N=137), we observed that the percentage of faecal samples  
159 containing intact seeds changed throughout the year (Fig. 1), with a mean of  $100 \pm 0 \%$  during  
160 the wet season (November-February) and of  $38 \pm 10 \%$  during the dry season (May-July).



161

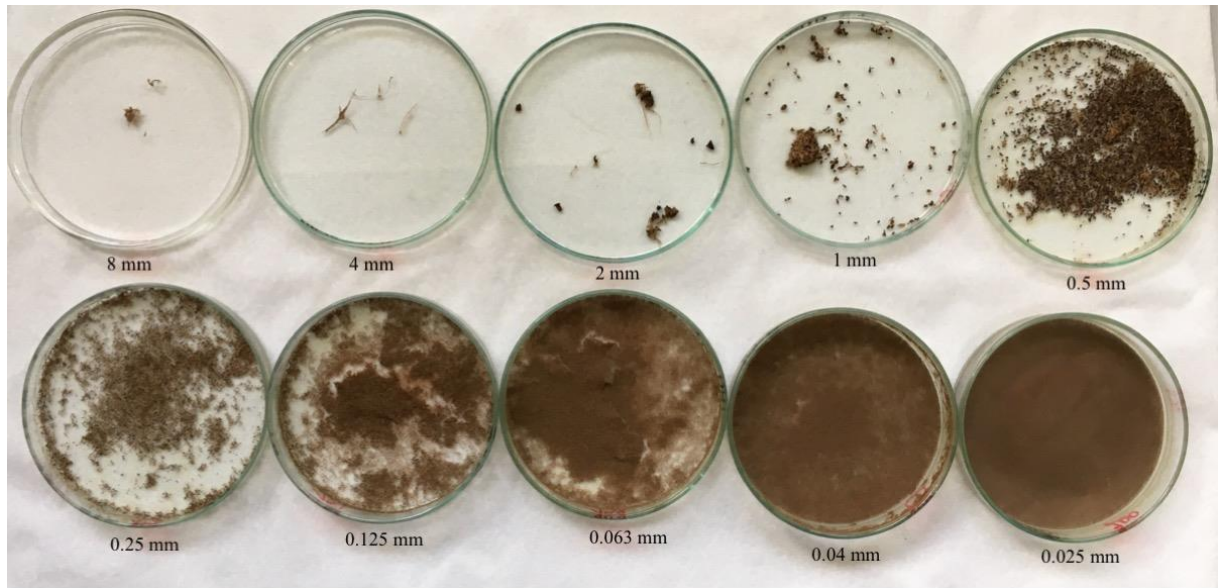
162 Figure 1 Percentage of faecal samples of proboscis monkeys (*Nasalis larvatus*) collected  
163 during different months that contain intact seeds

164

### 165 **Wet sieving analyses**

166 Fig. 2 illustrates the typical way faecal particles are distributed after wet sieving analysis.





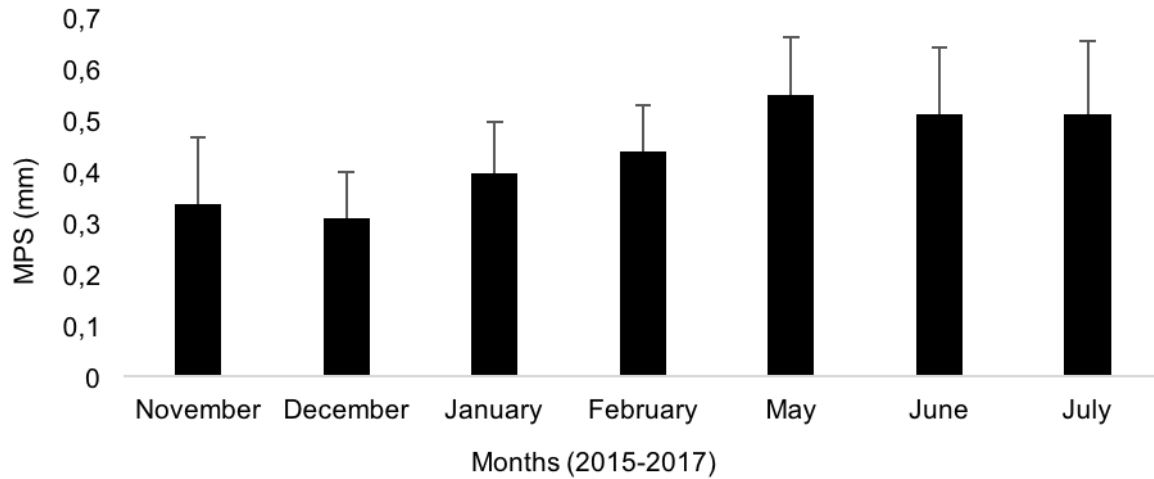
167

168 Figure 2. Distribution of proboscis monkey (*Nasalis larvatus*) faecal particles after wet  
169 sieving analysis. Each petri dish represents one of the 10 cascade sieves, ordered from 8 mm  
170 until 0.025 mm mesh size. The sample PMF217-1 collected on the 28th of January 2017 was  
171 used for this example.

172

173 By using a cascade of 10 sieves (mesh sizes: 8 to 0.025 mm), the MPS reaches an average of  
174  $0.45 \pm 0.14$  mm and increases over the course of the observation period from November to  
175 July (Fig. 3). By using a series of eight sieves (mesh sizes: 8 to 0.063 mm) like in Matsuda et  
176 al. (2014), we observe that  $MPS_{(0.063-8mm)}$  is significantly larger than  $MPS_{(0.025-8mm)}$ , reaching  
177  $0.55 \pm 0.14$  mm ( $V=6441$ ,  $N=113$ ,  $p<0.001$ ).

178

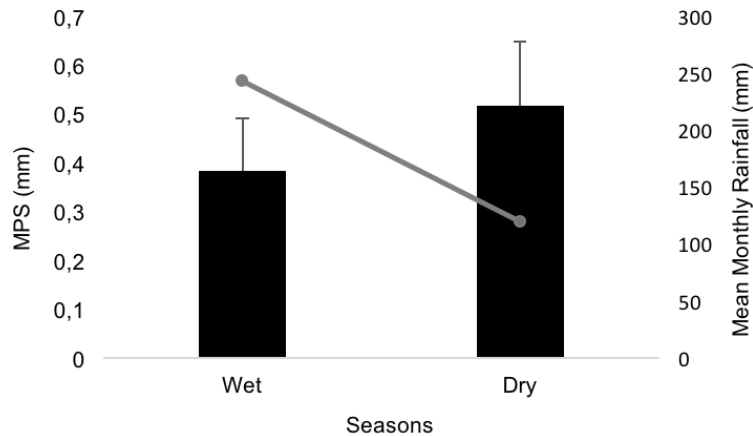


179

180 Figure 3. Variation in proboscis monkey (*Nasalis larvatus*) MPS over the course of the  
 181 observation period (November-July)

182

183 When comparing MPS<sub>(0.025-8mm)</sub> of proboscis monkeys across seasons, we observe that  
 184 MPS is significantly smaller during the wet season than the dry season (MPS<sub>wet</sub> = 0.38 ± 0.11  
 185 mm, MPS<sub>dry</sub> = 0.52 ± 0.13 mm; t-test t = -6.2812, p < 0.001) (Fig. 4).



186

187 Figure 4. MPS variation of proboscis monkeys (*Nasalis larvatus*) across seasons

188

189 Table 1 summarises four MPS measurements. Using a series of 10 sieves (with both smallest  
 190 mesh sizes 0.040 and 0.025 mm) resulted in finer MPS than calculation with the 8-sieve  
 191 cascade. MPS measurements were significantly larger when including the maximum particle  
 192 length (MPL) for the largest sieve in the calculation.

193

194 Table 1. Mean particle size  $\pm$  SD of 28 faecal samples of proboscis monkeys (*Nasalis*  
195 *larvatus*) measured using two series of sieves (indicated by the sieve size of the smallest and  
196 largest sieves) and with or without taking the maximum particle length (MPL, when particles  
197 were retained on the largest sieve) into account in the MPS calculation

Method	MPS $\pm$ SD (mm)
0.025-8 MPL	0.48 $\pm$ 0.11
0.025-8	0.47 $\pm$ 0.11
0.063-8 MPL	0.59 $\pm$ 0.11
0.063-8	0.57 $\pm$ 0.10

198

## 199 Discussion

200 This study focused on proboscis monkeys' faecal samples collected between 2015 and  
201 2017, during wet and dry seasons. We confirm the very small discrete mean faecal particle  
202 size in proboscis monkey ( $MPS_{(0.025-8mm)} = 0.45 \pm 0.14$  mm), for its average body mass. We  
203 measured a  $MPS_{(0.063-8mm)}$  of  $0.55 \pm 0.14$  mm, similar to the results of a previous study  
204 ( $MPS_{(0.063-16mm)} = 0.53 \pm 0.09$  mm) obtained by analysing 10 samples collected in June-July  
205 2010 [Matsuda et al., 2014]. The fine MPS indicates the generally high chewing efficiency of  
206 proboscis monkeys. For example, in comparison, frugivorous primates in Borneo, such as  
207 macaques (*Macaca fascicularis* and *M. nemestrina*) and orangutans (*Pongo pygmaeus*), have  
208 larger  $MPS_{(0.063-16mm)}$  respectively ranging from  $1.07 \pm 0.47$  to  $2.30 \pm 0.78$  mm [Matsuda et  
209 al., 2014].

210 We observed that MPS is even smaller during the wet season than the dry season. The  
211 same pattern had been observed in folivorous gelada baboons [Venkataraman et al., 2014].  
212 The latter showed a lower MPS in wet season when consuming less tough food items. In our  
213 study, the MPS difference might also be linked to a change in diet. Smaller MPS values  
214 during the wet season correlate with high percentage of intact seeds in faeces, suggesting

215 individuals might consume more fruits and their seeds. However, this assumption must be  
216 considered carefully, as the absence of seeds in faeces does not always imply that individuals  
217 did not eat fruits (i.e. seeds could be totally digested, chewed or discharged). Mismatches  
218 have been observed between proboscis monkey fruit feeding activity and seeds detected in  
219 faeces [Matsuda et al., 2013]. Primates, including proboscis monkeys, usually avoid feeding  
220 on tough leaves or leaf parts [Hill and Lucas, 1996; Teaford et al., 2006; Dunham and  
221 Lambert, 2016; Matsuda et al., 2017]. The same pattern is observed in chimpanzees where  
222 fallback foods are significantly tougher than preferred items (fruits) [Vogel et al., 2008].  
223 However, in Bornean orangutans (*P. p. wurmbii*), mechanical properties of leaves and fruits  
224 did not vary significantly [Vogel et al., 2008]. In the present study, we did not analyse the  
225 toughness of food items fed on by proboscis monkeys. However, in comparison to leaves,  
226 fruits and seeds are generally considered as high quality food [Milton, 1993; Hanya and  
227 Bernard, 2015]. Containing less fibre, fruits generally are more digestible than leaves [Milton,  
228 1993]; consumption of unripe fruits may lead to smaller MPS. Further work should  
229 investigate nutritional and mechanical properties of unripe fruits and their seeds consumed by  
230 the proboscis monkey to better understand the feeding selection in this endangered primate.

231 As in gelada baboons, we suggest here that fallback food consumption during some  
232 parts of the year leads to a reduction of chewing efficiency which might potentially negatively  
233 impact the animals' fitness [Venkataraman et al., 2014]. There is preliminary evidence that  
234 'rumination' activity in proboscis monkeys is higher during times of increased leaf  
235 consumption [Matsuda et al., 2014], which could potentially attenuate the change in MPS  
236 associated with leaves. If this was a general pattern, then the MPS difference between the  
237 seasons obtained in the present study should be of a lower magnitude than in other arboreal  
238 primates that show a seasonal foraging pattern but do not 'ruminate'. Compared to geladas  
239 with a seasonal MPS difference of 0.3-0.4 mm in prime adults, the proboscis monkeys of the

240 present study did show a lower difference (0.14 mm, Fig. 4). However, due to diet differences  
241 between hindgut fermenter geladas and foregut fermenter proboscis monkeys, this  
242 comparison should be treated cautiously. We suggest further studies should determine  
243 whether proboscis monkey individuals achieve finer MPS when they ‘ruminate’ as opposed to  
244 times when they do not. Such data could help unravel the relevance of facultative rumination  
245 as a response to diet constraints. Finally, future research should also investigate if seasonal  
246 changes in MPS are also measured in other colobine primates, as data is missing so far.

247

#### 248 Acknowledgements

249 We thank the Sabah Wildlife Department and Sabah Biodiversity Centre for allowing us to  
250 carry out our research in the Lower Kinabatangan Wildlife Sanctuary. We thank our Belgian  
251 financial funders: the FNRS (Fonds de la Recherche Scientifique), FNRS Gustave Boël-  
252 Sofina fellowship 2016 and the Fonds Léopold III – pour l’Exploration et la Conservation de  
253 la Nature asbl. Thanks to all students and research assistants at Danau Girang Field Centre  
254 who helped us in the field.

255

256

257 **References**

258 Bauchop T, Martucci, RW (1968). Ruminant-like digestion of the langur monkey. *Science,*  
259 *New Series* 161: 698–700.

260

261 Bjorndal KA, Bolten AB, Moore JE (1990). Digestive fermentation in herbivores: Effect of  
262 food particle size. *Physiological Zoology* 63: 710–721.

263

264 Clauss M, Lechner-Doll M, Streich WJ (2002). Faecal particle size distribution in captive  
265 wild ruminants: An approach to the browser/grazer dichotomy from the other end. *Oecologia*  
266 131: 343–349.

267

268 Clauss M, Steuer P, Erlinghagen-Lückerath K, Kaandorp J, Fritz J, Südekum K-H, Hummel J  
269 (2015). Faecal particle size: Digestive physiology meets herbivore diversity. *Comparative*  
270 *Biochemistry and Physiology A* 179: 182–191.

271

272 Dunbar RIM, Bose U (1991). Adaptation to grass-eating in gelada baboons. *Primates* 32: 1–7.

273

274 Dunham NT, Lambert AL (2016). The role of leaf toughness on foraging efficiency in Angola  
275 black and white colobus monkeys (*Colobus angolensis palliatus*). *American Journal of*  
276 *Physical Anthropology* 161: 343–354.

277

278 Fritz J, Hummel J, Kienzle E, Arnold C, Nunn C, Clauss M (2009). Comparative chewing  
279 efficiency in mammalian herbivores. *Oikos* 118: 1623–1632.

280

281 Fritz J, Streich WJ, Schwarm A, Clauss M (2012). Condensing results of wet sieving analyses

282 into a single data: A comparison of methods for particle size description. *Journal of Animal*  
283 *Physiology and Animal Nutrition* 96: 783–797.

284

285 Hanya G, Bernard H (2015). Different roles of seeds and young leaves in the diet of red leaf  
286 monkeys (*Presbytis rubicunda*): Comparisons of availability, nutritional properties, and  
287 associated feeding behavior. *International Journal of Primatology* 36: 177–193.

288

289 Hill DA, Lucas PW (1996). Toughness and fiber content of major leaf foods of Japanese  
290 macaques (*Macaca fuscata yakui*) in Yakushima. *American Journal of Primatology* 38: 221–  
291 231.

292

293 Matsuda I, Clauss M, Tuuga A, Sugau J, Hanya G, Yumoto T, Bernard H, Hummel J (2017).  
294 Factors affecting leaf selection by foregut-fermenting proboscis monkeys: New insight from  
295 in vitro digestibility and toughness of leaves. *Scientific Reports* DOI:10.1038/srep42774.

296

297 Matsuda I, Higashi S, Otani Y, Tuuga A, Bernard H, Corlett RT (2013). A short note on seed  
298 dispersal by colobines: The case of the proboscis monkey. *Integrative Zoology* 8:395–399.

299

300 Matsuda I, Murai T, Clauss M, Yamada T, Tuuga A, Bernard H, Higashi S (2011a).  
301 Regurgitation and remastication in the foregut-fermenting proboscis monkey (*Nasalis*  
302 *larvatus*). *Biology letters* 7: 786–789.

303

304 Matsuda I, Tuuga A, Bernard H (2011b). Riverine refuging by proboscis monkeys (*Nasalis*  
305 *larvatus*) and sympatric primates: Implications for adaptive benefits of the riverine habitat.  
306 *Mammalian Biology* 76: 165–171.

307

308 Matsuda I, Tuuga A, Hashimoto C, Bernard H, Yamagiwa J, Fritz J, Tsubokawa K, Yayota  
309 M, Murai T, Iwata Y, Clauss M (2014). Faecal particle size in free-ranging primates supports  
310 a “rumination” strategy in the proboscis monkey (*Nasalis larvatus*). *Oecologia* 174: 1127–  
311 1137.

312

313 Matsuda I, Tuuga A, Higashi S (2009). The feeding ecology and activity budget of proboscis  
314 monkeys. *American Journal of Primatology* 71: 478–492.

315

316 Milton K (1993). Diet and primate evolution. *Scientific American* 269: 86–93.

317

318 Nygren K, Hofmann, RR (1990). Seasonal variations of food particle size in Moose. *Alces*  
319 26: 44–50.

320

321 R Development Core Team (2016). R: A language and environment for statistical computing.  
322 R foundation for statistical computing. R 3.4.0 GUI 1.70. Vienna, Austria. [http://www.R-](http://www.R-project.org)  
323 [project.org](http://www.R-project.org)

324

325 Renecker LA, Hudson RJ (1990). Digestive kinetics of moose (*Alces alces*), wapiti (*Cervus*  
326 *elaphus*) and cattle. *Animal Production* 50: 51–61.

327

328 Teaford MF, Lucas PW, Ungar PS, Glander KE (2006). Mechanical defenses in leaves eaten  
329 by Costa Rican howling monkeys (*Alouatta palliata*). *American Journal of Physical*  
330 *Anthropology* 129: 99–104.

331



332 Venkataraman VV, Glowacka H, Fritz J, Clauss M, Seyoum C, Nguyen N, Fashing PJ (2014).  
333 Effects of dietary fracture toughness and dental wear on chewing efficiency in geladas  
334 (*Theropithecus gelada*). *American Journal of Physical Anthropology* 155: 17–32.  
335

336 Vogel ER, van Woerden JT, Lucas PW, Utami Atmoko SS, van Schaik CP, Dominy NJ  
337 (2008). Functional ecology and evolution of hominoid molar enamel thickness: *Pan*  
338 *troglydites schweinfurthii* and *Pongo pygmaeus wurmbii*. *Journal of Human Evolution*  
339 55: 60–74.  
340

341 Weary TE, Wrangham RW, Clauss M (2017). Applying wet sieving fecal particle size  
342 measurement to frugivores: A case study of the eastern chimpanzee (*Pan troglodytes*  
343 *schweinfurthii*). *American Journal of Physical Anthropology* 163: 510–518.