

This is an Open Access document downloaded from ORCA, Cardiff University's institutional repository:<https://orca.cardiff.ac.uk/id/eprint/121986/>

This is the author's version of a work that was submitted to / accepted for publication.

Citation for final published version:

Boyns, Trevor and Cerbioni, Fabrizio 2019. Accounting and performance monitoring in Tuscany: Larderello, 1836–1858. *Accounting History Review* 29 (2) , pp. 243-267. 10.1080/21552851.2019.1606524

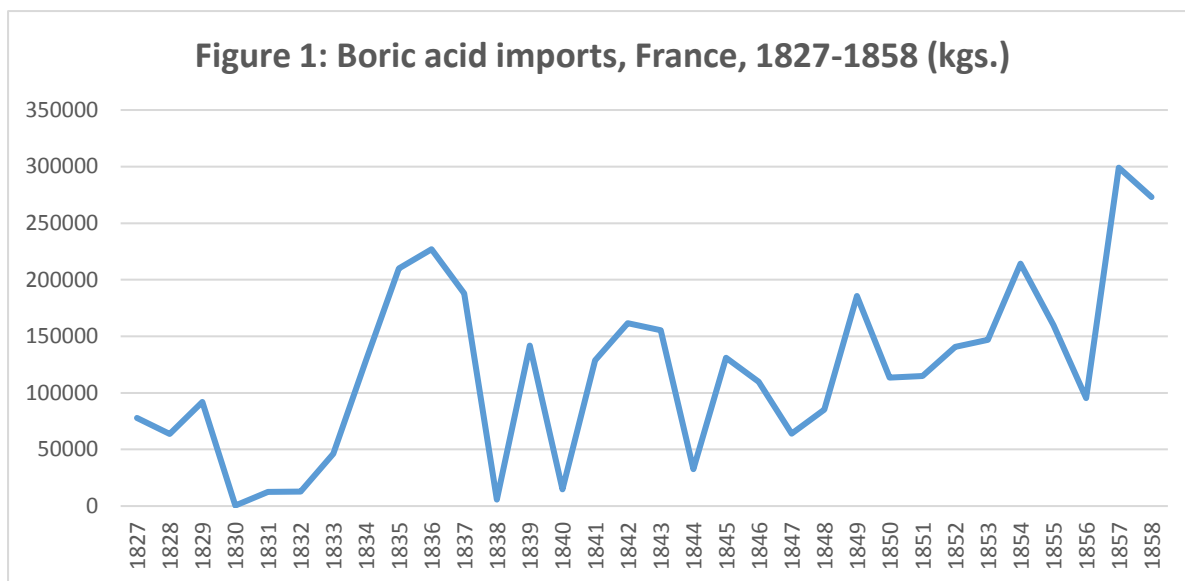
Publishers page: <http://dx.doi.org/10.1080/21552851.2019.1606524>

Please note:

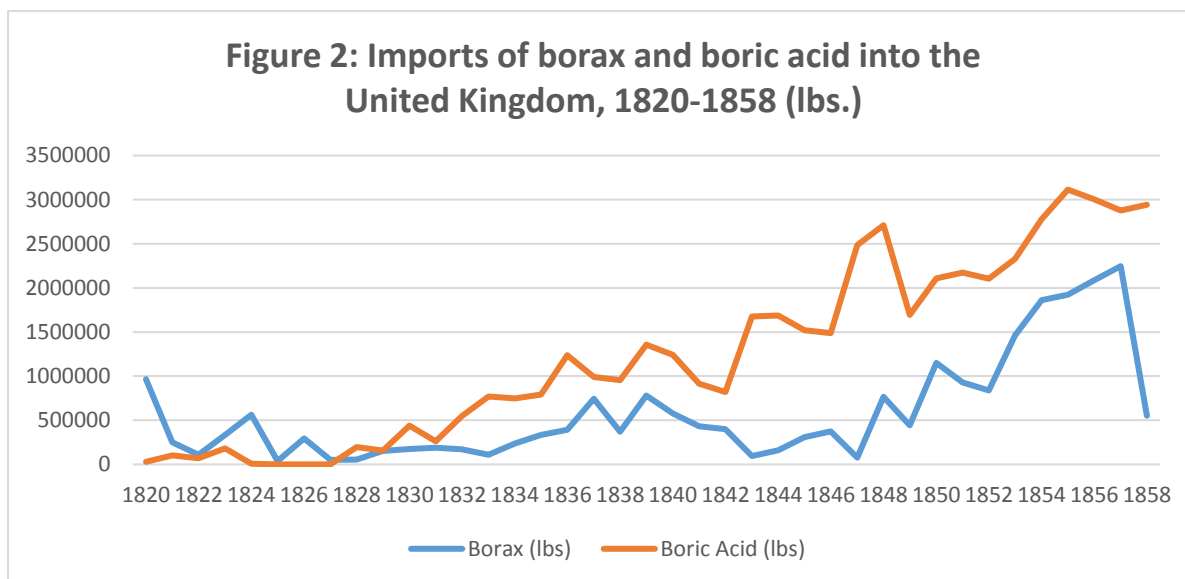
Changes made as a result of publishing processes such as copy-editing, formatting and page numbers may not be reflected in this version. For the definitive version of this publication, please refer to the published source. You are advised to consult the publisher's version if you wish to cite this paper.

This version is being made available in accordance with publisher policies. See <http://orca.cf.ac.uk/policies.html> for usage policies. Copyright and moral rights for publications made available in ORCA are retained by the copyright holders.

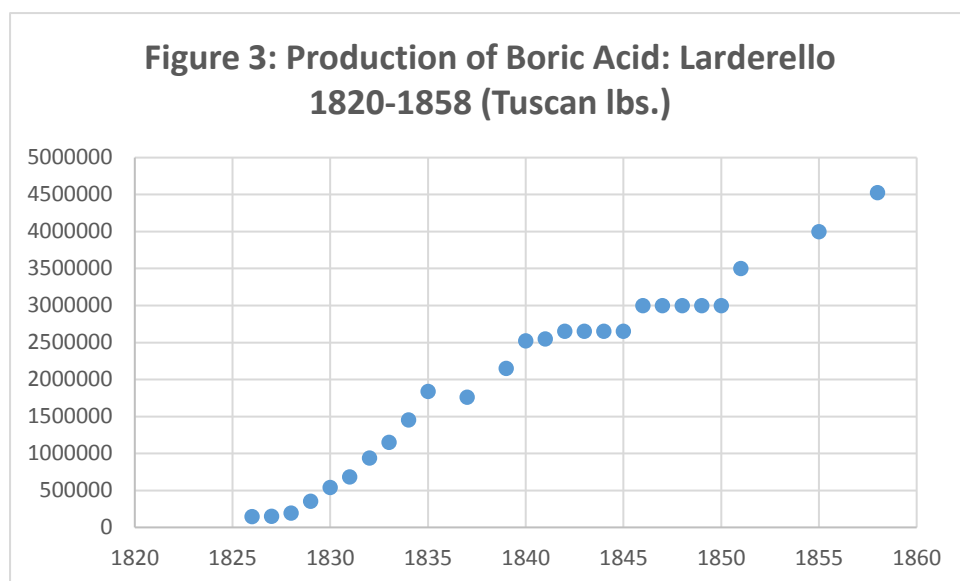




Sources: 1827-56 - *Tableau décennal du commerce de la France ...* (Paris: Imprimerie Royale, 1838, 1848 and 1858); 1857-58 - *Tableau général du commerce de la France ...* (Paris: Imprimerie Royale, 1858, 1859).



Sources: 1820-48 – BPP, various, 1832-1850; 1849-58 – BPP, C.1890, 1854-55 and C.2562, 1859 Session 2.



(Sources: various archival and secondary sources, especially de Larderel (1851, 11))

Figure 4 - Organisational structure, Laderello, 1849

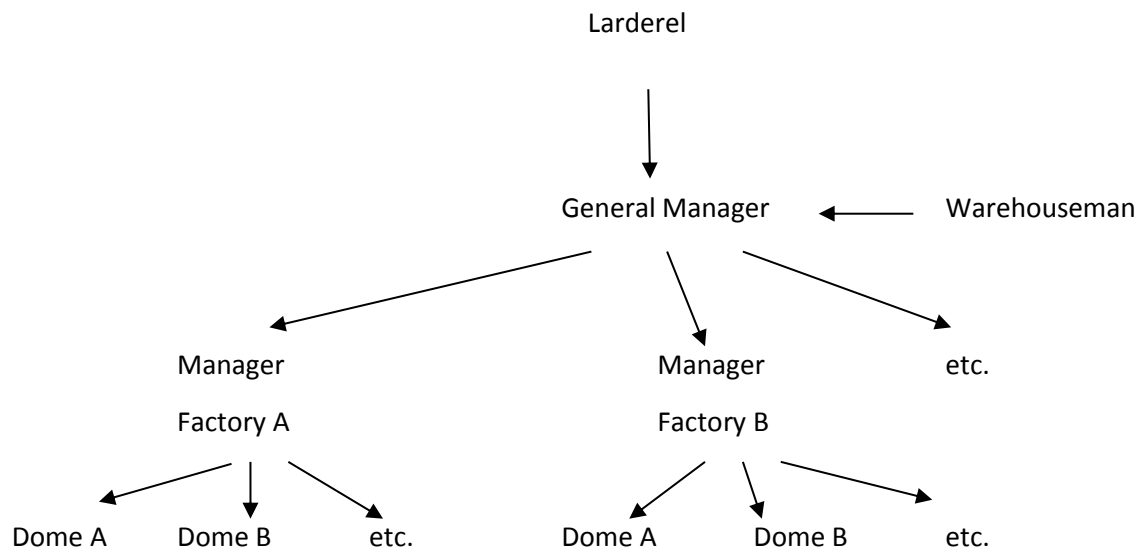


Table 1 - Structure of a page of the factory ‘administration’ book, Montecerboli, 1840

					For Manufacturing and transport					For construction , maintenance and various expenses				TOTALOther... (observations and consignments)
					Total produced	Cost of production	Per %	Transport	Total expenses for the acid	Construction	Maintenance	TOTAL	Various expenses		
Date		Name of Dome A	Name of Dome B	Name of Dome C											
1															
2															
3															
..															
..															
31															
kilograms															
Names of the workers		Kg produced													
..												

Source: Fabbrica di Montecerboli 1840 (ASPGC E1202)

Table 2 – Structure of a page in the factory 'general accounting' book, 1836-1839

				For Manufacturing and transport					For construction , maintenance and various expenses				TOTALother... (observations and consignments)
				Total produced	Cost of production	Per %	transport	Total expenses for the acid	Construction	Maintenance	TOTAL	Various expenses		
Factory	Managerr	Domes	Workers											
		S. Francesco	Casalini											
			Raggianti											
		S.Federigo	Bertini											
			Bruni											
		S. Enrico	Micheletti											
Larderello	Beneducci Luigi		Pasquinelli											
		S.Edoardo	Cheli											
			Bertini											
		S.Adriano	Poggianti											
			Gucci											
.....other factories below in this page											

Source: *Libro di contabilità generale, 1836-1839* (ASPGC E1272)