

# Association of Genetic Liability to Psychotic Experiences With Neuropsychotic Disorders and Traits

Sophie E. Legge, PhD; Hannah J. Jones, PhD; Kimberley M. Kendall, MRCPsych; Antonio F. Pardiñas, PhD; Georgina Menzies, PhD; Matthew Bracher-Smith, BSc; Valentina Escott-Price, PhD; Elliott Rees, PhD; Katrina A. S. Davis, MRCPsych; Matthew Hotopf, MRCPsych, PhD; Jeanne E. Savage, PhD; Danielle Posthuma, PhD; Peter Holmans, PhD; George Kirov, MRCPsych, PhD; Michael J. Owen, FRCPsych, PhD; Michael C. O'Donovan, FRCPsych, PhD; Stanley Zammit, MRCPsych, PhD; James T. R. Walters, MRCPsych, PhD

**IMPORTANCE** Psychotic experiences, such as hallucinations and delusions, are reported by approximately 5% to 10% of the general population, although only a small proportion develop psychotic disorders such as schizophrenia. Studying the genetic causes of psychotic experiences in the general population, and its association with the genetic causes of other disorders, may increase the understanding of their pathologic significance.

**OBJECTIVES** To determine whether genetic liability to psychotic experiences is shared with schizophrenia and/or other neuropsychiatric disorders and traits and to identify genetic loci associated with psychotic experiences.

**DESIGN, SETTING AND PARTICIPANTS** Analyses of genetic correlation, polygenic risk scores, and copy number variation were performed using data from participants in the UK Biobank from April 1, 2018, to March 20, 2019, to assess whether genetic liability to psychotic experiences is shared with schizophrenia and/or other neuropsychiatric disorders and traits. Genome-wide association studies of psychotic experience phenotypes were conducted to identify novel genetic loci. Participants in the final analyses after exclusions included 6123 individuals reporting any psychotic experience, 2143 individuals reporting distressing psychotic experiences, and 3337 individuals reporting multiple occurrences of psychotic experiences. A total of 121 843 individuals who did not report a psychotic experience formed the comparator group. Individuals with a psychotic disorder were excluded from all analyses.

**MAIN OUTCOMES AND MEASURES** Genetic associations with psychotic experience phenotypes.

**RESULTS** The study included a total of 127 966 participants (56.0% women and 44.0% men; mean [SD] age, 64.0 [7.6] years). Psychotic experiences were genetically correlated with major depressive disorder, schizophrenia, autism spectrum disorder, and attention-deficit/hyperactivity disorder. Analyses of polygenic risk scores identified associations between psychotic experiences and genetic liability for major depressive disorder, schizophrenia, bipolar disorder, autism spectrum disorder, and attention-deficit/hyperactivity disorder. Individuals reporting psychotic experiences had an increased burden of copy number variations previously associated with schizophrenia (odds ratio [OR], 2.04; 95% CI, 1.39-2.98;  $P = 2.49 \times 10^{-4}$ ) and neurodevelopmental disorders more widely (OR, 1.75; 95% CI, 1.24-2.48;  $P = 1.41 \times 10^{-3}$ ). Genome-wide association studies identified 4 significantly associated loci, including a locus in Ankyrin-3 (*ANKK1* [GenBank [NM\\_020987](#)]) (OR, 1.16; 95% CI, 1.10-1.23;  $P = 3.06 \times 10^{-8}$ ) with any psychotic experience, and a locus in cannabinoid receptor 2 gene (*CNR2* [GenBank [NM\\_001841](#)]) (OR, 0.66; 95% CI, 0.56-0.78;  $P = 3.78 \times 10^{-8}$ ) with distressing psychotic experiences. The genome-wide association study of any psychotic experience had a low single-nucleotide polymorphism-based heritability estimate ( $h^2 = 1.71\%$ ; 95% CI, 1.02%-2.40%).

**CONCLUSIONS AND RELEVANCE** A large genetic association study of psychotic experiences from the population-based UK Biobank sample found support for a shared genetic liability between psychotic experiences and schizophrenia, major depressive disorder, bipolar disorder, and neurodevelopmental disorders.

JAMA Psychiatry. 2019;76(12):1256-1265. doi:10.1001/jamapsychiatry.2019.2508  
Published online September 25, 2019.

← Editorial [page 1228](#)

+ [Supplemental content](#)

**Author Affiliations:** Author affiliations are listed at the end of this article.

**Corresponding Authors:** James T. R. Walters, MRCPsych, PhD, MRC Centre for Neuropsychiatric Genetics and Genomics, Division of Psychological Medicine and Clinical Neurosciences, School of Medicine, Cardiff University, Cardiff, United Kingdom ([waltersjt@cardiff.ac.uk](mailto:waltersjt@cardiff.ac.uk)); Stanley Zammit, MRCPsych, PhD, MRC Centre for Neuropsychiatric Genetics and Genomics, Division of Psychological Medicine and Clinical Neurosciences, School of Medicine, Cardiff University, Cardiff, United Kingdom ([zammits@cardiff.ac.uk](mailto:zammits@cardiff.ac.uk)).

Psychotic experiences, such as hallucinations and delusions, are features of psychiatric disorders (eg, schizophrenia), but they are also reported by approximately 5% to 10% of the general population.<sup>1,2</sup> Psychotic experiences are considered to be symptoms of psychiatric illness only if they co-occur with other features of that disorder, including some aspect of psychosocial impairment. It is currently unclear whether psychotic experiences in the general population are: (1) on a spectrum that, at the extreme, is associated specifically with schizophrenia, (2) largely unassociated with the psychotic symptoms experienced in schizophrenia and other major mental disorders, or (3) associated with liability to major mental disorders more generally.

Twin studies and genome-wide association studies (GWASs) have provided evidence that psychotic experiences are heritable (30%-50% from twin studies,<sup>3-5</sup> and 3%-17% for single-nucleotide polymorphism [SNP]-heritability estimates<sup>6,7</sup>), indicating that common genetic variants play a role in their liability. There have been 3 GWASs of psychotic experiences to date in adolescent samples<sup>7-9</sup> and no reported genome-wide significant findings. Although there was an initial assumption that psychotic experiences in adolescence would specifically increase the risk for schizophrenia in later life, epidemiologic evidence suggests a nonspecific increased risk for broader psychopathologic characteristics.<sup>10</sup> However, to date, no study has found strong evidence for an association between genetic liabilities for schizophrenia or any other mental disorder and psychotic experiences.<sup>7,8,11-13</sup>

Although many individuals with a lifetime history of psychotic experiences have their first experience in adolescence, nearly one-quarter of first-onset psychotic experiences occur after 40 years of age.<sup>14</sup> Our aims were to use data from the UK Biobank to identify genetic loci associated with psychotic experiences reported by adults in a population-based study, and to determine whether genetic liability to psychotic experiences is shared with schizophrenia and/or other neuropsychiatric disorders and traits.

## Methods

### Sample

Study individuals were from the UK Biobank, a large prospective population-based cohort study of approximately 500 000 individuals between 40 and 69 years of age who were recruited from across the UK between 2006 and 2010.<sup>15</sup> The North West Multi-Centre Ethics Committee granted ethical approval to UK Biobank and all participants provided written informed consent. This study was conducted under UK Biobank project numbers 13310 and 14421.

### Psychotic Experiences Phenotypes

A Mental Health Questionnaire (MHQ) was sent to all participants who provided an email address from July 13, 2016, to July 27, 2017, and was completed by 157 387 individuals (46.4% of those emailed; 31.4% of the total UK Biobank sample). For psychotic experiences, participants were asked about previous experience of visual hallucinations, auditory hallucinations, de-

## Key Points

**Question** Is the genetic liability to psychotic experiences shared with schizophrenia and/or other neuropsychiatric disorders and traits?

**Findings** In this cohort study, genetic correlation, polygenic risk score, and copy number variation analyses indicated a shared genetic liability between psychotic experiences and major depressive disorder, schizophrenia, bipolar disorder, and neurodevelopmental disorders. Genome-wide association studies identified 4 genetic loci associated with psychotic experiences including loci in *ANK3* and *CNR2*.

**Meaning** Findings suggest that the genetic liability of psychotic experiences is shared with several psychiatric disorders, which include, but is not specific to, schizophrenia.

lusions of reference, delusions of persecution, as well as how often these experiences occurred and how distressing they found them (eAppendix in the [Supplement](#)). Individuals with a diagnosis of schizophrenia, bipolar disorder, or any other psychotic disorder were identified using all available sources (hospital records, death records, or self-report at the interview or from the MHQ) and were excluded from all analyses (full details in eMethods 1 in the [Supplement](#)).

We selected 3 primary phenotypes for GWASs (eFigure 1 in the [Supplement](#)): (1) any psychotic experience defined as a positive response to any of the 4 symptom questions (UK Biobank field IDs: 20463, 20468, 20471, and 20474); (2) a distressing psychotic experience, defined as any psychotic experience that was rated as “a bit,” “quite,” or “very” distressing (UK Biobank field ID: 20462); and (3) multiple occurrences of psychotic experiences, defined as any psychotic experience that occurred on more than 1 occasion (UK Biobank field IDs: 20465, 20470, 20473, and 20476). As a comparator group, we included individuals who provided a negative response to all 4 psychotic experience symptom questions. In addition, we investigated each individual psychotic experience symptom for association with polygenic risk scores (PRSs).

### Genetic Data

Genetic data for the study participants were provided by UK Biobank and the imputation and quality control procedures are fully described elsewhere.<sup>16</sup> The data release contained 488 377 participants assayed on either the UK Biobank Axiom or the UK BiLEVE Axiom purpose-built arrays at the Affymetrix Research Services Laboratory. Standard quality control procedures were applied prior to imputation using Haplotype Reference Consortium<sup>17</sup> and UK10K haplotype reference<sup>18</sup> panels. We applied additional quality control filters to select high-quality SNPs,<sup>19</sup> minor allele frequency greater than 0.01, imputation score greater than 0.8, missingness less than 0.05, Hardy-Weinberg equilibrium *P* value greater than  $1 \times 10^{-6}$  and removed SNPs imputed by the UK10K haplotype reference<sup>18</sup> data set in accordance with guidance from the UK Biobank (<http://www.ukbiobank.ac.uk/2017/07/important-note-about-imputed-genetics-data/>). One member from each related pair with a kinship coefficient greater than 0.15 was excluded from

analyses, preferentially retaining individuals who had experienced a psychotic experience, and were otherwise removed at random.

Analyses were restricted to individuals with a self-reported British and Irish ethnicity (UK Biobank field ID: 21000) and principal components supplied by UK Biobank<sup>16</sup> (UK Biobank field ID: 22009) were used to make additional exclusions and control for population structure (described in eMethods 2 and eFigures 2 and 3 in the [Supplement](#)).

### GWAS Analysis

To identify genetic risk variants for psychotic experiences, association analysis was performed in SNPTEST, version 2.5.4<sup>20</sup> using bgen, version 1.2 imputed dosage data.<sup>21</sup> More than 7.5 million SNPs were included in each GWAS. An additive logistic regression model was used including as covariates the genotyping array, the top 5 principal components (as recommended for most GWAS approaches<sup>22</sup>), and any additional principal components from the first 20 that were nominally associated ( $P < .05$ ) with the GWAS phenotype in a logistic regression. To obtain relatively independent index SNPs, linkage disequilibrium (LD) clumping was performed in PLINK<sup>23</sup> ( $r^2 < 0.1$ ;  $P < 1 \times 10^{-4}$ ; window size,  $<3$  MB) for each GWAS using a reference panel of 1000 randomly selected individuals with confirmed European ancestry in the UK Biobank. Functional annotation was conducted using FUMA<sup>24</sup> and LDSC<sup>25</sup> was used to calculate the LD score intercept and heritability on the observed scale using the summary statistics from each psychotic experience GWAS.

### Validation Analyses in the Avon Longitudinal Study of Parents and Children Cohort

To assess the reproducibility of the psychotic experience GWAS, we used the summary statistics from the GWAS of any psychotic experience to target psychotic experiences in the Avon Longitudinal Study of Parents and Children (ALSPAC) cohort,<sup>26,27</sup> which have been previously described.<sup>11,28</sup> The psychotic experience PRS was generated for each ALSPAC participant using the widely used method<sup>29</sup> and logistic regression was used to test for an association between PRS and psychotic experiences reported at 12 and 18 years of age (eMethods 3 in the [Supplement](#)).

### Genetic Correlations

LDSC<sup>25,30</sup> was used to calculate the genetic correlation between the GWAS of any psychotic experience and other psychiatric and personality traits. External GWAS data sets (that did not include data from the UK Biobank where possible) used to generate the correlations included schizophrenia,<sup>31</sup> bipolar disorder,<sup>32</sup> major depressive disorder,<sup>33</sup> attention-deficit/hyperactivity disorder (ADHD),<sup>34</sup> autism spectrum disorder,<sup>35</sup> neuroticism,<sup>36</sup> and intelligence.<sup>37</sup> A Bonferroni correction was applied to control for multiple testing.

### Polygenic Risk Scores

PRSs were generated to investigate additional psychotic experience phenotypes that were not sufficiently powered for genetic correlation analyses. We selected the same summary statistics

used for genetic correlations to create the risk scores for UK Biobank participants using the method described by the Psychiatric Genomics Consortium<sup>29</sup> and detailed in eMethods 4 in the [Supplement](#). The intelligence GWAS summary statistics used in this study specifically excluded participants from the UK Biobank (74 214 individuals remaining). None of the other training sets included the UK Biobank as a contributing sample, although we were not able to test for duplicates at the genotype level and so cannot rule duplicates out. Given this potential for sample overlap with the training sets, PRS results should be treated with a degree of caution and are used primarily to support and extend findings from genetic correlation analysis (which allows for overlapping samples). The primary analysis used standardized scores generated from SNPs with a discovery sample  $P$  value threshold of  $P \leq .05$ , but associations at 10 other  $P$  value thresholds were also tested. A logistic regression model was used to test the association of each PRS with various psychotic experience phenotypes, covarying for the first 5 principal components and genotyping array.

### Copy Number Variation

Copy number variation (CNV) calling for the UK Biobank has been described in detail elsewhere<sup>38</sup> and is detailed in eMethods 5 in the [Supplement](#). We compared carrier status of rare CNVs previously associated with schizophrenia<sup>39</sup> and neurodevelopmental disorders more widely<sup>40</sup> with the 3 primary psychotic experience phenotypes used for GWASs. Association analyses were carried out using logistic regression and included age, sex, and genotyping array as covariates.

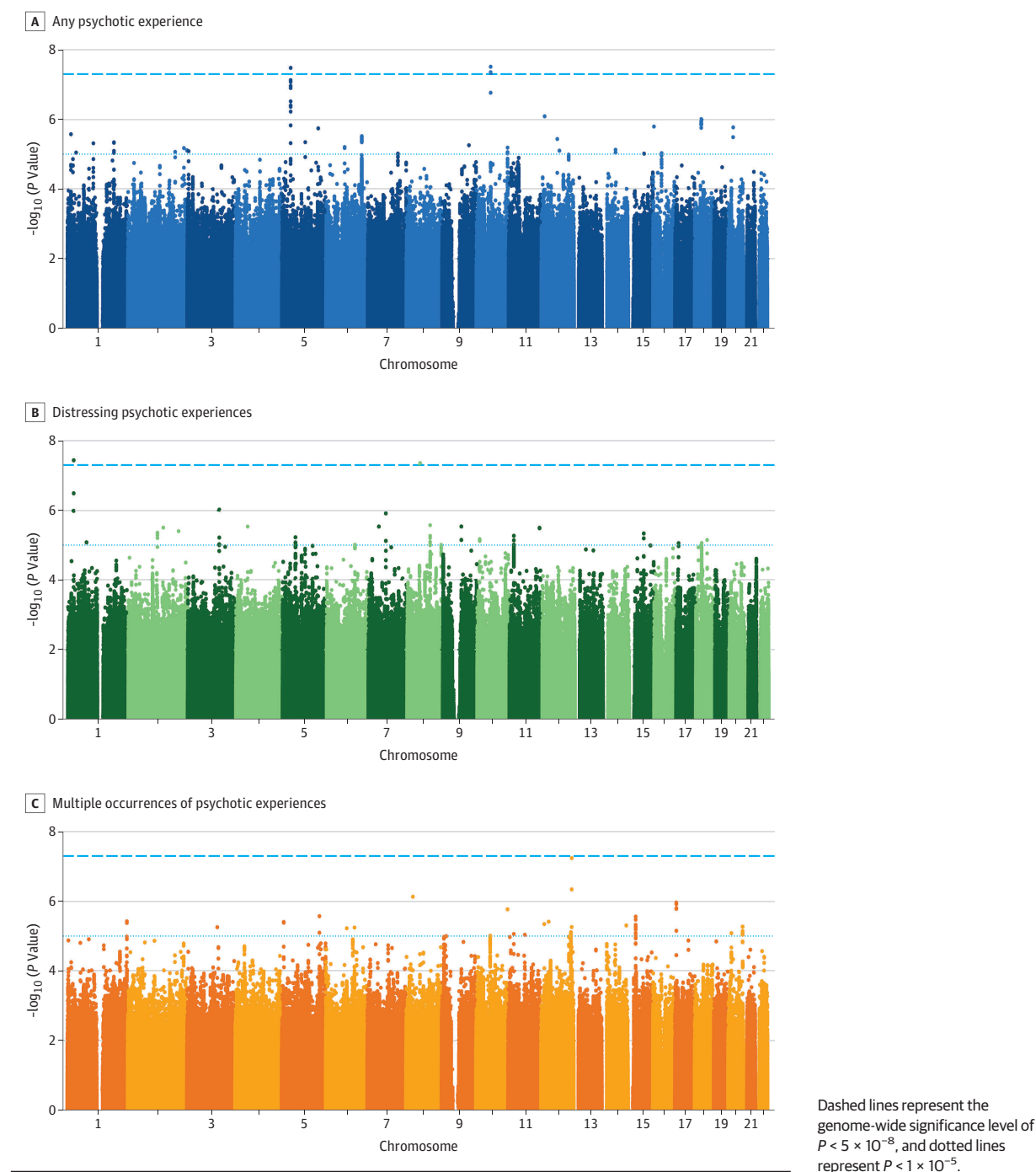
## Results

A total of 7803 (5.0%; 60.0% women and 40.0% men; mean [SD] age, 62.7 [7.7] years) individuals from the UK Biobank who completed the MHQ reported at least 1 psychotic experience, 3012 individuals rated the psychotic experience as distressing, and a total of 4388 individuals reported multiple occurrences of at least 1 psychotic experience. A total of 147 461 individuals (56.0% women and 44.0% men; mean [SD] age, 64.1 [7.6] years) who reported no psychotic experiences constituted the comparison group for our association analyses. The mean (SD) age of the first psychotic experience was 31.6 (17.6) years (eFigure 4 in the [Supplement](#)), with 2341 of 6654 (35.2%) first occurring before the age of 20 years or for as long as the participant could remember, 2137 (32.1%) between the ages of 20 and 39 years, and 2176 (32.7%) between the ages of 40 and 76 years. We excluded 198 individuals who had a diagnosis of schizophrenia, 818 with bipolar disorder, and 346 with other psychotic disorders from all genetic analyses (detailed in eMethods 1 in the [Supplement](#)).

### Genome-Wide Association Studies

The GWAS of any psychotic experience in 6123 cases and 121 843 controls (after quality control; exclusions detailed in eMethods 6 in the [Supplement](#)) identified 2 variants that were associated at the genome-wide significance level of  $P < 5 \times 10^{-8}$  (Figure 1, Table 1;  $\lambda_{GC} = 1.05$ , LD score regression inter-

**Figure 1. Manhattan Plot for Genome-Wide Association Study Analyses of Any Psychotic Experience, Distressing Psychotic Experiences, and Multiple Occurrences of Psychotic Experiences**



cept = 1.00): rs10994278, an intronic variant within Ankyrin-3 (ANK3 [GenBank [NM\\_020987](#)]) (odds ratio [OR], 1.16; 95% CI, 1.10-1.23;  $P = 3.06 \times 10^{-8}$ ), and intergenic variant rs549656827 (OR, 0.61; 95% CI, 0.50-0.73;  $P = 3.30 \times 10^{-8}$ ).

A second GWAS restricting the cases to 2143 individuals with distressing psychotic experiences identified 2 genome-wide significance variants (Table 1;  $\lambda_{GC} = 1.03$ , LD score intercept = 1.01): rs75459873, intronic to cannabinoid receptor 2 (CNR2 [GenBank [NM\\_001841](#)]) (OR, 0.66; 95% CI, 0.56-0.78;

$P = 3.78 \times 10^{-8}$ ), and intergenic variant rs3849810 (OR, 1.22; 95% CI, 1.13-1.31;  $P = 4.55 \times 10^{-8}$ ).

The third GWAS restricting the cases to 3337 individuals who reported multiple occurrences of psychotic experiences did not identify any associated variants at genome-wide significance ( $\lambda_{GC} = 1.03$ , LD score intercept = 1.00). QQ plots for each GWAS are displayed in eFigure 5 in the [Supplement](#) and LocusZoom plots for each genome-wide significant locus are provided in eFigure 6 in the [Supplement](#).



Table 1. Genome-Wide Significant Associations<sup>a</sup>

GWAS Phenotype	Single-Nucleotide Polymorphism	Chromosome	Base Position	A1	OR (95% CI)	P Value	Position	Nearest Gene
Any PE	rs10994278	10	62009219	T	1.16 (1.10-1.23)	$3.06 \times 10^{-8}$	Intronic	ANK3
Any PE	rs549656827	5	35349428	G	0.61 (0.50-0.73)	$3.30 \times 10^{-8}$	Intergenic	PRLR
Distressing PE	rs75459873	1	24256312	G	0.66 (0.56-0.78)	$3.78 \times 10^{-8}$	Intronic	CNR2
Distressing PE	rs3849810	8	53009606	A	1.22 (1.13-1.31)	$4.55 \times 10^{-8}$	Intergenic	ST18

Abbreviations: A1, risk allele; GWAS, genome-wide association study; OR, odds ratio; PE, psychotic experience.

<sup>a</sup> Genome-wide significant associations ( $P < 5 \times 10^{-8}$ ) from GWAS analyses.

Single-nucleotide polymorphism-based heritability estimates calculated by LDSC<sup>25</sup> for the GWAS of any psychotic experience was  $h^2 = 1.71\%$  (95% CI, 1.02%-2.40%). The other GWAS analyses did not meet requirements (case  $n > 5000$  and  $z$  score  $> 4^{41}$ ) for heritability or genetic correlation analyses with LDSC. None of the associated regions from the GWAS for any psychotic experience and distressing psychotic experience showed evidence of colocalization<sup>42</sup> with schizophrenia,<sup>31</sup> bipolar disorder,<sup>32</sup> or major depressive disorder.<sup>33</sup>

#### Validation Analyses in ALSPAC

There was evidence of an association between the PRS calculated using the GWAS of any psychotic experience from the UK Biobank sample at the  $P$  value threshold of  $\leq .5$  and definite psychotic experiences between 12 and 18 years of age in ALSPAC (OR, 1.13; 95% CI, 1.02-1.25;  $R^2 = 0.002$ ;  $P = .02$ ). This finding was consistent for thresholds above  $P < .05$  and when using measures from age 18 years only (eFigure 7 and eTable 1 in the Supplement). However, the psychotic experiences PRS was also associated with the presence of major depressive disorder at 18 years of age (OR, 1.19; 95% CI, 1.05-1.35;  $R^2 = 0.004$ ;  $P = .01$ ).

#### Link Between Association at CNR2 and Cannabis Use

We investigated, but found no evidence for, a mediating or moderating association of cannabis use with the association between distressing psychotic experiences and rs75459873 at the cannabinoid receptor gene CNR2. Cannabis use itself (UK Biobank field ID: 20453) was significantly associated with distressing psychotic experiences (OR, 1.36; 95% CI, 1.32-1.40;  $P = 9.16 \times 10^{-88}$ ), but rs75459873 was not associated with cannabis use (OR, 0.99; 95% CI, 0.95-1.04;  $P = .70$ ). Furthermore, the association between rs75459873 and distressing psychotic experiences was unchanged in a model including cannabis use as a covariate (OR, 0.62; 95% CI, 0.52-0.75) or as an interaction term (OR, 0.59; 95% CI, 0.48-0.73;  $P = .31$  for interaction).

#### Genetic Correlations

Significant genetic correlations ( $r_g$ ) were observed between any psychotic experience and major depressive disorder ( $r_g = 0.46$ ;  $P = 4.64 \times 10^{-11}$ ), autism spectrum disorder ( $r_g = 0.39$ ;  $P = 1.68 \times 10^{-4}$ ), ADHD ( $r_g = 0.24$ ;  $P = 4.61 \times 10^{-3}$ ), and schizophrenia ( $r_g = 0.21$ ;  $P = 7.29 \times 10^{-5}$ ). Figure 2 displays these genetic correlations and eTable 2 in the Supplement details the full results. The other psychotic experience GWASs did not meet requirements<sup>41</sup> for genetic correlation analysis.

#### PRS Analysis

We found evidence of a weak association between any psychotic experience and genetic liability, indicated by PRS at a  $P < .05$  threshold for SNP inclusion, for schizophrenia (OR, 1.09; 95% CI, 1.06-1.12; adjusted  $R^2 = 0.001$ ;  $P = 2.96 \times 10^{-11}$ ), major depressive disorder (OR, 1.16; 95% CI, 1.13-1.19;  $R^2 = 0.003$ ;  $P = 1.48 \times 10^{-30}$ ), bipolar disorder (OR, 1.07; 95% CI, 1.04-1.10;  $R^2 = 0.001$ ;  $P = 5.11 \times 10^{-7}$ ), ADHD (OR, 1.06; 95% CI, 1.03-1.09;  $R^2 = 0.0005$ ;  $P = 5.73 \times 10^{-6}$ ), and autism spectrum disorder (OR, 1.07; 95% CI, 1.04-1.10;  $R^2 = 0.001$ ;  $P = 1.34 \times 10^{-5}$ ). These associations were stronger for distressing psychotic experiences (Figure 3; eTable 2 in the Supplement) and consistent across most  $P$  value thresholds (eFigures 8 and 9 in the Supplement). We also considered individual psychotic symptoms and found that PRSs for schizophrenia, bipolar disorder, depression, and ADHD were more strongly associated with delusions of persecution than with the other psychotic symptoms (eTable 3 and eFigures 10-12 in the Supplement). The association with psychotic experience phenotypes for bipolar disorder PRS and major depressive disorder PRS remained significant in analyses controlling for schizophrenia PRS (eTable 4 in the Supplement). The association with major depressive disorder PRS remained significant when individuals with a diagnosis of depression were removed (eTable 5 in the Supplement). Given the potential for sample overlap with the training sets, PRS findings should be treated with a degree of caution.

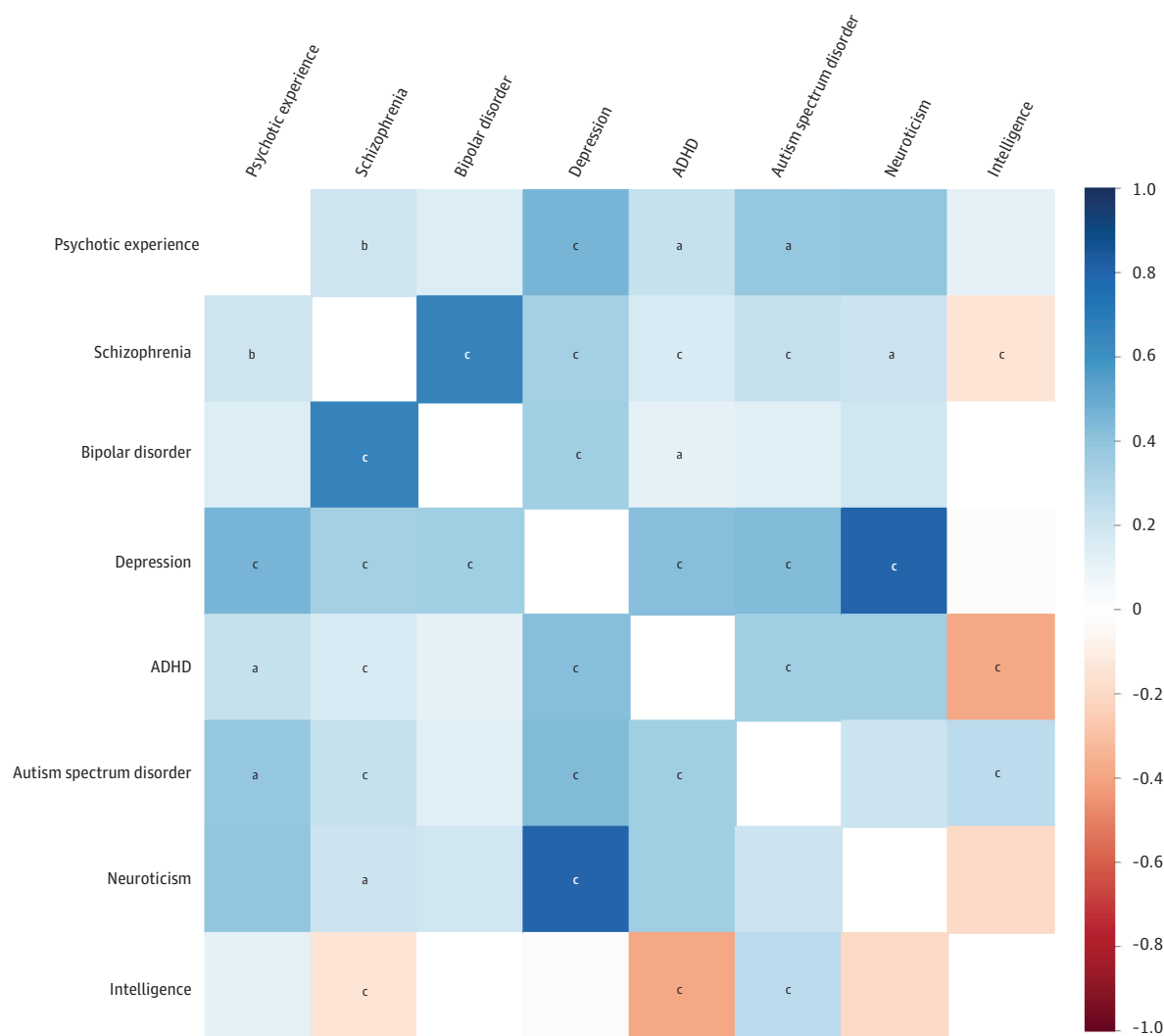
#### Copy Number Variation

Individuals reporting distressing psychotic experiences in particular had an increased burden of CNVs previously associated with schizophrenia (OR, 2.04; 95% CI, 1.39-2.98;  $P = 2.49 \times 10^{-4}$ ) and neurodevelopmental disorders (OR, 1.75; 95% CI, 1.24-2.48;  $P = 1.41 \times 10^{-3}$ ). There was evidence of an increased burden of these CNVs in individuals reporting any psychotic experience, but not multiple occurrences of psychotic experiences (Table 2).

#### Discussion

We conducted the largest genetic-association study of psychotic experiences, to our knowledge, using the population-based UK Biobank sample and found evidence of a shared genetic liability between psychotic experiences and several psychiatric disorders, which included, but was not specific to,

Figure 2. Genetic Correlation Analysis



Color corresponds to the strength of the correlation, and the letters (a, b, and c) correspond to the statistical significance of the correlation. Positive correlations are shown in blue and negative correlations in red. ADHD indicates attention deficit/hyperactivity disorder.

<sup>a</sup>  $P < 6.25 \times 10^{-3}$ .

<sup>b</sup>  $P < 1.00 \times 10^{-4}$ .

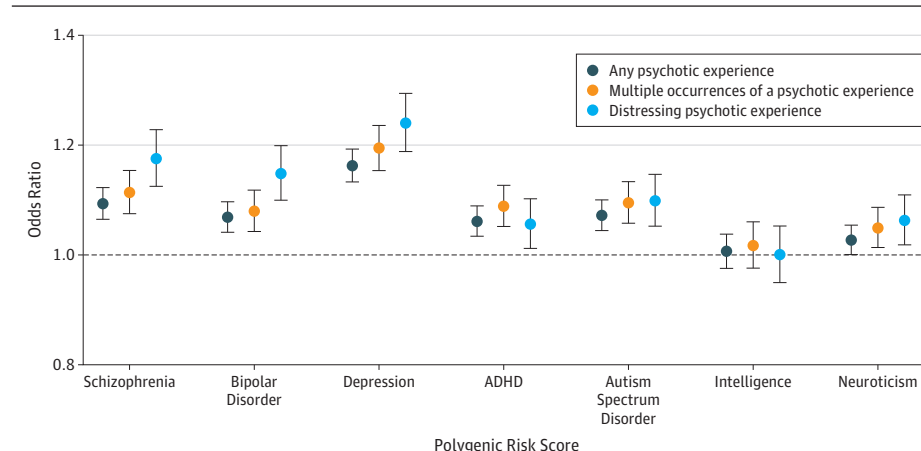
<sup>c</sup>  $P < 1.00 \times 10^{-5}$ .

schizophrenia. Genetic correlation analysis identified significant genetic correlations between psychotic experiences and major depressive disorder ( $r_g = 0.46$ ), autism spectrum disorder ( $r_g = 0.39$ ), ADHD ( $r_g = 0.24$ ), and schizophrenia ( $r_g = 0.21$ ). Polygenic risk score analyses identified associations between psychotic experiences and genetic liability for schizophrenia, major depressive disorder, bipolar disorder, ADHD, and autism spectrum disorder, and we found particular enrichment of these PRS scores in distressing psychotic experiences and for delusions of persecution. However, given the possibility of sample overlap between the UK Biobank and the training sets, the PRS findings should be treated with caution. The mechanisms underlying the high genetic correlation between depression and psychotic experiences cannot be discerned from our analysis, but one possibility is that the psychotic experi-

ences have arisen in the context of mood-related changes, consistent with the strong associations between psychotic experiences and depressive symptoms observed in population-based studies.<sup>43</sup> Nonetheless, when individuals with a lifetime history of depression were excluded from PRS analyses, the association remained, indicating that the findings are not wholly attributable to depression.

We found an increased burden of CNVs previously associated with schizophrenia and neurodevelopmental disorders more widely in individuals with any psychotic symptoms and distressing psychotic symptoms, although the association was stronger for those with distressing psychotic experiences. All schizophrenia-associated CNVs are also associated with neurodevelopmental disorders such as intellectual disability and autism spectrum disorder; in fact, pen-

Figure 3. Polygenic Risk Score (PRS) Analysis



The x-axis refers to the PRS tested (schizophrenia, bipolar disorder, major depressive disorder, attention deficit/hyperactivity disorder [ADHD], autism spectrum disorder, neuroticism, and intelligence), and the y-axis represents the odds ratio (OR). Points display the OR and 95% CIs (error bars) for each PRS ( $P < .05$  single-nucleotide polymorphism [SNP] inclusion threshold) regressed against each psychotic experience phenotype. Plots displaying multiple  $P$  value SNP inclusion thresholds are shown in eFigures 8 and 9 in the Supplement.

Table 2. Association of Psychotic Experience Phenotypes With CNVs<sup>a</sup>

Phenotype	Rate, No./Total No. (%)		OR (95% CI)	P Value
	Case	Control		
Schizophrenia CNVs				
Any PE	59/5829 (1.0)	572/115807 (0.5)	1.54 (1.18-2.01)	$1.60 \times 10^{-3}$
Distressing PE	28/2046 (1.4)	572/115807 (0.5)	2.04 (1.39-2.98)	$2.49 \times 10^{-4}$
Multiple occurrence of PE	28/3177 (0.9)	572/115807 (0.5)	1.34 (0.91-1.94)	.14
Neurodevelopmental disorder CNVs				
Any PE	83/5829 (1.4)	1058/115807 (0.9)	1.54 (1.23-1.92)	$1.89 \times 10^{-4}$
Distressing PE	34/2046 (1.7)	1058/115807 (0.9)	1.75 (1.24-2.48)	$1.41 \times 10^{-3}$
Multiple occurrence of PEs	38/3177 (1.2)	1058/115807 (0.9)	1.30 (0.92-1.78)	.14

Abbreviations: CNV, copy number variant; OR, odds ratio; PE, psychotic experience.

<sup>a</sup> All schizophrenia-associated CNVs are also included in neurodevelopmental disorders.

entrance is higher in individuals with these disorders.<sup>39</sup> Furthermore, CNVs in the UK Biobank have been associated with a range of outcomes, including cognitive performance<sup>38,44</sup> and depression,<sup>45</sup> adding strength to our findings of a lack of specificity for genetic risk of psychotic experiences.

Several studies have demonstrated that psychopathologic conditions in the population are best described by a bifactor model with a common latent trait as well as specific traits, and that psychotic experiences index the more severe end of the common or shared trait.<sup>46,47</sup> Our findings of nonspecificity of genetic risk for psychotic experiences with risk for other disorders are consistent with those of previous studies.<sup>7,8,11,12</sup> Nonetheless, despite lacking specificity, our results suggest that incorporating questions about distress to self-reported assessments of psychotic experiences may allow a more valid identification of experiences that index liability of schizophrenia and major mental health disorders.

In the largest GWAS of psychotic experiences to date, we identified 4 genome-wide significant loci. However, consistent with other studies,<sup>7,11</sup> the heritability estimate (1.71%) was low and, given that the variance explained in our PRS analysis was also low, the findings suggest that understanding the genetics of psychotic experiences is unlikely to have an important effect on understanding the genetics of schizophrenia specifically.

The primary GWAS findings are related to intronic variants in *ANK3* and *CNR2*. The GWAS of any psychotic experi-

ence identified 2 significant loci, the most significant of which was indexed by rs10994278, an intronic variant to *ANK3* (OR, 1.16; 95% CI, 1.10-1.23;  $P = 3.06 \times 10^{-8}$ ). The *ANK3* gene encodes ankyrin-G, a protein that has been shown to regulate the assembly of voltage-gated sodium channels and is essential for normal synaptic function.<sup>48</sup> *ANK3* is one of strongest and most replicated genes for bipolar disorder,<sup>32</sup> and variants within *ANK3* have also been associated in the Psychiatric Genomics Consortium cross-disorder GWAS,<sup>49</sup> and in a rare variant analysis of autism spectrum disorder.<sup>50</sup>

The GWAS of distressing psychotic experiences also identified 2 significant loci, the most significant of which was indexed by rs75459873, an intronic variant to *CNR2* (OR, 0.66; 95% CI, 0.56-0.78;  $P = 3.78 \times 10^{-8}$ ). *CNR2* encodes for CB2, 1 of 2 well-characterized cannabinoid receptors (CB1 being the other). Several lines of evidence have implicated the endocannabinoid system in psychiatric disorders, including schizophrenia<sup>51,52</sup> and depression.<sup>53</sup> The main psychoactive agent of cannabis,  $\Delta^9$ -tetrahydrocannabinol, can cause acute psychotic symptoms and cognitive impairment.<sup>54</sup> Given that cannabis use is strongly associated with psychotic experiences, we tested, but found no evidence for, a mediating or moderating effect of cannabis use on the association of rs75459873 and distressing psychotic experiences. However, while no evidence was found in this study, a mediating effect of cannabis use cannot be ruled out given the relatively low power of such analyses and the potential measurement error

in cannabis use assessed via lifetime self-report. Independent replication of genetic loci identified in this study will be required to further understand their role in subclinical psychotic experiences.

### Strengths and Limitations

Strengths of this study include the large sample size (approximately 10 times that of previous studies), the use of an adult cohort, and the use of multiple psychotic experience phenotypes, which increase confidence in our findings. This study also has some limitations. Although we used all available information to identify and remove individuals with a psychotic disorder, it remains possible that some individuals were not identified and remained in the analysis. A further limitation of this study relates to the retrospective measurement of lifetime psychotic experiences by self-report from an online questionnaire, as this increases the likelihood of measurement error. A further limitation is the evidence of a “healthy volunteer” selection bias for the participants recruited to the UK Biobank and the sample cannot be therefore considered

representative of the general population.<sup>55</sup> We also found that the participants who completed the MHQ had significantly higher intelligence and lower schizophrenia, depression, and neuroticism PRS compared with UK Biobank participants who did not complete the MHQ (eTable 6 in the [Supplement](#)). Last, we were not able to entirely deduplicate the UK Biobank individuals from all the external data sets used for the PRS analysis; thus, these findings should be treated with caution.

### Conclusions

In the largest GWAS of psychotic experiences from the population-based UK Biobank sample, we found support for a shared genetic liability between psychotic experiences and several psychiatric disorders including schizophrenia, major depressive disorder, bipolar disorder, and neurodevelopmental disorders, indicating that psychotic experiences are not specifically associated with schizophrenia, but rather with a general risk for mental health disorders.

#### ARTICLE INFORMATION

**Accepted for Publication:** June 20, 2019.

**Published Online:** September 25, 2019.  
doi:10.1001/jamapsychiatry.2019.2508

**Open Access:** This is an open access article distributed under the terms of the [CC-BY License](#).  
© 2019 Legge SE et al. *JAMA Psychiatry*.

**Author Affiliations:** MRC Centre for Neuropsychiatric Genetics and Genomics, Division of Psychological Medicine and Clinical Neurosciences, School of Medicine, Cardiff University, Cardiff, United Kingdom (Legge, Kendall, Pardiñas, Bracher-Smith, Escott-Price, Rees, Holmans, Kirov, Owen, O'Donovan, Zammit, Walters); Centre for Academic Mental Health, Department of Population Health Sciences, Bristol Medical School, University of Bristol, Bristol, United Kingdom (Jones, Zammit); Medical Research Centre, Integrative Epidemiology Unit, University of Bristol, Bristol, United Kingdom (Jones); National Institute for Health Research Bristol Biomedical Research Centre, University Hospitals Bristol National Health Service Foundation Trust, University of Bristol, Bristol, United Kingdom (Jones, Zammit); UK-Dementia Research Institute at Cardiff, Division of Psychological Medicine and Clinical Neurosciences, School of Medicine, Cardiff University, Cardiff, United Kingdom (Menzies, Escott-Price); Institute of Psychiatry, Psychology & Neuroscience, King's College London, London, United Kingdom (Davis, Hotopf); South London and Maudsley National Health Service Foundation Trust, London, United Kingdom (Davis, Hotopf); Department of Complex Trait Genetics, Centre for Neurogenetics and Cognitive Research, Amsterdam Neuroscience, Vrije Universiteit, Amsterdam, the Netherlands (Savage, Posthuma).

**Author Contributions:** Dr Legge had full access to all the data in the study and takes responsibility for the integrity of the data and the accuracy of the data analysis. Drs Zammit and Walters contributed equally to the work as co-senior authors.

**Concept and design:** Legge, Jones, Hotopf, Owen, O'Donovan, Zammit, Walters.

**Acquisition, analysis, or interpretation of data:** All authors.

**Drafting of the manuscript:** Legge, Jones, Kendall, Hotopf, Zammit, Walters.

**Critical revision of the manuscript for important intellectual content:** Legge, Jones, Pardiñas,

Menzies, Bracher-Smith, Escott-Price, Rees, Davis, Savage, Posthuma, Holmans, Kirov, Owen, O'Donovan, Zammit, Walters.

**Statistical analysis:** Legge, Jones, Kendall, Pardiñas, Escott-Price, Savage, Holmans, Kirov, Zammit, Walters.

**Obtained funding:** Kendall, Owen, Walters.

**Administrative, technical, or material support:**

Legge, Menzies, Bracher-Smith, Posthuma, Kirov, O'Donovan.

**Supervision:** Kirov, Owen, O'Donovan, Zammit, Walters.

**Conflict of Interest Disclosures:** Drs Owen, O'Donovan, and Walters reported receiving a grant from Takeda Pharmaceuticals outside the submitted work. No other disclosures were reported.

**Funding/Support:** The National Institute for Health Research, Medical Research Council, and British Heart Foundation supplied funds to complete genotyping on all UK Biobank participants. This project was supported by the following grants: Medical Research Council Centre (MR/L010305/1), Program (G0800509), and Project (MR/L011794/1, MC\_PC\_17212) grants to Cardiff University, and The National Centre for Mental Health, funded by the Welsh Government through Health and Care Research Wales. Drs Jones and Zammit are supported by the National Institute for Health Research Biomedical Research Centre at University Hospitals Bristol National Health Service Foundation Trust and the University of Bristol. Dr Kendall is supported by a Wellcome Trust Clinical Research Training Fellowship. Drs Davis and Hotopf are supported by the National Institute for Health Research Biomedical Research Centre at South London and Maudsley National Health Service Foundation Trust and King's College London. The UK Medical Research Council, the Wellcome Trust

(102215/2/13/2) and the University of Bristol provide core support for the Avon Longitudinal Study of Parents and Children (ALSPAC). A comprehensive list of grants funding is available on the ALSPAC website. The collection of ALSPAC measures used was specifically funded by the Medical Research Council (G0701503/85179). ALSPAC GWAS data were generated by Sample Logistics and Genotyping Facilities at the Wellcome Trust Sanger Institute and the Laboratory Corporation of America using support from 23andMe.

**Role of the Funder/Sponsor:** The funding sources had no role in the design and conduct of the study; collection, management, analysis, and interpretation of the data; preparation, review, or approval of the manuscript; and decision to submit the manuscript for publication. The funding bodies had no experimental role in the comparison between DNA quantification methods used in the genotyping workflow.

**Disclaimer:** The views expressed are those of the author(s) and not necessarily those of the National Health Service, the National Institute for Health Research, or the Department of Health and Social Care.

**Additional Contributions:** We thank the UK Biobank participants for providing the samples for this project.

**Additional Information:** GWAS summary statistics can be downloaded from <https://walters.psychm.cf.ac.uk/>.

#### REFERENCES

- McGrath JJ, Saha S, Al-Hamzawi A, et al. Psychotic experiences in the general population: a cross-national analysis based on 31,261 respondents from 18 countries. *JAMA Psychiatry*. 2015;72(7):697-705. doi:10.1001/jamapsychiatry.2015.0575
- van Os J, Linscott RJ, Myin-Germeys I, Delespaul P, Krabbendam L. A systematic review and meta-analysis of the psychosis continuum: evidence for a psychosis proneness-persistence-



- impairment model of psychotic disorder. *Psychol Med*. 2009;39(2):179-195. doi:10.1017/S0033291708003814
3. Zavos HM, Freeman D, Haworth CM, et al. Consistent etiology of severe, frequent psychotic experiences and milder, less frequent manifestations: a twin study of specific psychotic experiences in adolescence. *JAMA Psychiatry*. 2014;71(9):1049-1057. doi:10.1001/jamapsychiatry.2014.994
  4. Ronald A. Recent quantitative genetic research on psychotic experiences: new approaches to old questions. *Curr Opin Behav Sci*. 2015;2:81-88. doi:10.1016/j.cobeha.2014.10.001
  5. Ronald A, Pain O. A systematic review of genome-wide research on psychotic experiences and negative symptom traits: new revelations and implications for psychiatry. *Hum Mol Genet*. 2018;27(R2):R136-R152.
  6. Sieradzka D, Power RA, Freeman D, Cardno AG, Dudbridge F, Ronald A. Heritability of individual psychotic experiences captured by common genetic variants in a community sample of adolescents. *Behav Genet*. 2015;45(5):493-502. doi:10.1007/s10519-015-9727-5
  7. Pain O, Dudbridge F, Cardno AG, et al. Genome-wide analysis of adolescent psychotic-like experiences shows genetic overlap with psychiatric disorders. *Am J Med Genet B Neuropsychiatr Genet*. 2018;177(4):416-425. doi:10.1002/ajmg.b.32630
  8. Zammit S, Hamshere M, Dwyer S, et al. A population-based study of genetic variation and psychotic experiences in adolescents. *Schizophr Bull*. 2014;40(6):1254-1262. doi:10.1093/schbul/sbt146
  9. Ortega-Alonso A, Ekelund J, Sarin AP, et al. Genome-wide association study of psychosis proneness in the Finnish population. *Schizophr Bull*. 2017;43(6):1304-1314. doi:10.1093/schbul/sbx006
  10. Fisher HL, Caspi A, Poulton R, et al. Specificity of childhood psychotic symptoms for predicting schizophrenia by 38 years of age: a birth cohort study. *Psychol Med*. 2013;43(10):2077-2086. doi:10.1017/S0033291712003091
  11. Jones HJ, Stergiakouli E, Tansey KE, et al. Phenotypic manifestation of genetic risk for schizophrenia during adolescence in the general population. *JAMA Psychiatry*. 2016;73(3):221-228. doi:10.1001/jamapsychiatry.2015.3058
  12. Sieradzka D, Power RA, Freeman D, et al. Are genetic risk factors for psychosis also associated with dimension-specific psychotic experiences in adolescence? *PLoS One*. 2014;9(4):e94398. doi:10.1371/journal.pone.0094398
  13. Jones HJ, Heron J, Hammerton G, et al; 23 and Me Research Team. Investigating the genetic architecture of general and specific psychopathology in adolescence. *Transl Psychiatry*. 2018;8(1):145. doi:10.1038/s41398-018-0204-9
  14. McGrath JJ, Saha S, Al-Hamzawi AO, et al. Age of onset and lifetime projected risk of psychotic experiences: cross-national data from the World Mental Health Survey. *Schizophr Bull*. 2016;42(4):933-941. doi:10.1093/schbul/sbw011
  15. Sudlow C, Gallacher J, Allen N, et al. UK Biobank: an open access resource for identifying the causes of a wide range of complex diseases of middle and old age. *PLoS Med*. 2015;12(3):e1001779. doi:10.1371/journal.pmed.1001779
  16. Bycroft C, Freeman C, Petkova D, et al. Genome-wide genetic data on ~500,000 UK Biobank participants. Preprint. Posted online July 20, 2017. bioRxiv 166298. doi:10.1101/166298
  17. McCarthy S, Das S, Kretzschmar W, et al; Haplotype Reference Consortium. A reference panel of 64,976 haplotypes for genotype imputation. *Nat Genet*. 2016;48(10):1279-1283. doi:10.1038/ng.3643
  18. Huang J, Howie B, McCarthy S, et al; UK10K Consortium. Improved imputation of low-frequency and rare variants using the UK10K haplotype reference panel. *Nat Commun*. 2015;6:8111. doi:10.1038/ncomms9111
  19. Smith DJ, Escott-Price V, Davies G, et al. Genome-wide analysis of over 106 000 individuals identifies 9 neuroticism-associated loci. *Mol Psychiatry*. 2016;21(11):1644. doi:10.1038/mp.2016.177
  20. Marchini J, Howie B, Myers S, McVean G, Donnelly P. A new multipoint method for genome-wide association studies by imputation of genotypes. *Nat Genet*. 2007;39(7):906-913. doi:10.1038/ng2088
  21. Band G, Marchini J. BGEN: a binary file format for imputed genotype and haplotype data. Preprint. Posted online May 2, 2018. bioRxiv 308296. doi:10.1101/308296
  22. Tucker G, Price AL, Berger B. Improving the power of GWAS and avoiding confounding from population stratification with PC-Select. *Genetics*. 2014;197(3):1045-1049. doi:10.1534/genetics.114.164285
  23. Chang CC, Chow CC, Tellier LC, Vattikuti S, Purcell SM, Lee JJ. Second-generation PLINK: rising to the challenge of larger and richer datasets. *Gigascience*. 2015;4:7. doi:10.1186/s13742-015-0047-8
  24. Watanabe K, Taskesen E, van Bochoven A, Posthuma D. Functional mapping and annotation of genetic associations with FUMA. *Nat Commun*. 2017;8(1):1826. doi:10.1038/s41467-017-01261-5
  25. Bulik-Sullivan BK, Loh PR, Finucane HK, et al; Schizophrenia Working Group of the Psychiatric Genomics Consortium. LD score regression distinguishes confounding from polygenicity in genome-wide association studies. *Nat Genet*. 2015;47(3):291-295. doi:10.1038/ng.3211
  26. Boyd A, Golding J, Macleod J, et al. Cohort profile: the 'children of the 90s'—the index offspring of the Avon Longitudinal Study of Parents and Children. *Int J Epidemiol*. 2013;42(1):111-127. doi:10.1093/ije/dys064
  27. Fraser A, Macdonald-Wallis C, Tilling K, et al. Cohort profile: the Avon Longitudinal Study of Parents and Children: ALSPAC Mothers Cohort. *Int J Epidemiol*. 2013;42(1):97-110. doi:10.1093/ije/dys066
  28. Zammit S, Kounali D, Cannon M, et al. Psychotic experiences and psychotic disorders at age 18 in relation to psychotic experiences at age 12 in a longitudinal population-based cohort study. *Am J Psychiatry*. 2013;170(7):742-750. doi:10.1176/appi.ajp.2013.12060768
  29. Schizophrenia Working Group of the Psychiatric Genomics Consortium. Biological insights from 108 schizophrenia-associated genetic loci. *Nature*. 2014;511(7510):421-427. doi:10.1038/nature13595
  30. Bulik-Sullivan B, Finucane HK, Anttila V, et al; ReproGen Consortium; Psychiatric Genomics Consortium; Genetic Consortium for Anorexia Nervosa of the Wellcome Trust Case Control Consortium 3. An atlas of genetic correlations across human diseases and traits. *Nat Genet*. 2015;47(11):1236-1241. doi:10.1038/ng.3406
  31. Pardiñas AF, Holmans P, Pocklington AJ, et al; GERAD1 Consortium; CRESTAR Consortium. Common schizophrenia alleles are enriched in mutation-intolerant genes and in regions under strong background selection. *Nat Genet*. 2018;50(3):381-389. doi:10.1038/s41588-018-0059-2
  32. Stahl EA, Breen G, Forstner AJ, et al; eQTLGen Consortium; BIOS Consortium; Bipolar Disorder Working Group of the Psychiatric Genomics Consortium. Genome-wide association study identifies 30 loci associated with bipolar disorder. *Nat Genet*. 2019;51(5):793-803. doi:10.1038/s41588-019-0397-8
  33. Wray NR, Ripke S, Mattheisen M, et al; eQTLGen; 23andMe; Major Depressive Disorder Working Group of the Psychiatric Genomics Consortium. Genome-wide association analyses identify 44 risk variants and refine the genetic architecture of major depression. *Nat Genet*. 2018;50(5):668-681. doi:10.1038/s41588-018-0090-3
  34. Demontis D, Walters RK, Martin J, et al; ADHD Working Group of the Psychiatric Genomics Consortium (PGC); Early Lifecourse & Genetic Epidemiology (EAGLE) Consortium; 23andMe Research Team. Discovery of the first genome-wide significant risk loci for attention deficit/hyperactivity disorder. *Nat Genet*. 2019;51(1):63-75. doi:10.1038/s41588-018-0269-7
  35. Grove J, Ripke S, Als TD, et al; Autism Spectrum Disorder Working Group of the Psychiatric Genomics Consortium; BUPGEN; Major Depressive Disorder Working Group of the Psychiatric Genomics Consortium; 23andMe Research Team. Identification of common genetic risk variants for autism spectrum disorder. *Nat Genet*. 2019;51(3):431-444. doi:10.1038/s41588-019-0344-8
  36. de Moor MH, van den Berg SM, Verweij KJ, et al; Genetics of Personality Consortium. Meta-analysis of genome-wide association studies for neuroticism, and the polygenic association with major depressive disorder. *JAMA Psychiatry*. 2015;72(7):642-650. doi:10.1001/jamapsychiatry.2015.0554
  37. Savage JE, Jansen PR, Stringer S, et al. Genome-wide association meta-analysis in 269,867 individuals identifies new genetic and functional links to intelligence. *Nat Genet*. 2018;50(7):912-919. doi:10.1038/s41588-018-0152-6
  38. Kendall KM, Rees E, Escott-Price V, et al. Cognitive performance among carriers of pathogenic copy number variants: analysis of 152,000 UK Biobank subjects. *Biol Psychiatry*. 2017;82(2):103-110. doi:10.1016/j.biopsych.2016.08.014
  39. Rees E, Kendall K, Pardiñas AF, et al. Analysis of intellectual disability copy number variants for association with schizophrenia. *JAMA Psychiatry*. 2016;73(9):963-969. doi:10.1001/jamapsychiatry.2016.1831
  40. Coe BP, Witherspoon K, Rosenfeld JA, et al. Refining analyses of copy number variation identifies specific genes associated with developmental delay. *Nat Genet*. 2014;46(10):1063-1071. doi:10.1038/ng.3092

41. Zheng J, Erzurumluoglu AM, Elsworth BL, et al; Early Genetics and Lifecourse Epidemiology (EAGLE) Eczema Consortium. LD Hub: a centralized database and web interface to perform LD score regression that maximizes the potential of summary level GWAS data for SNP heritability and genetic correlation analysis. *Bioinformatics*. 2017;33(2):272-279. doi:10.1093/bioinformatics/btw613
42. Pickrell JK, Berisa T, Liu JZ, Séguérel L, Tung JY, Hinds DA. Detection and interpretation of shared genetic influences on 42 human traits. *Nat Genet*. 2016;48(7):709-717. doi:10.1038/ng.3570
43. van Rossum I, Dominguez MD, Lieb R, Wittchen HU, van Os J. Affective dysregulation and reality distortion: a 10-year prospective study of their association and clinical relevance. *Schizophr Bull*. 2011;37(3):561-571. doi:10.1093/schbul/sbp101
44. Kendall KM, Bracher-Smith M, Fitzpatrick H, et al. Cognitive performance and functional outcomes of carriers of pathogenic copy number variants: analysis of the UK Biobank. *Br J Psychiatry*. 2019;214(5):297-304. doi:10.1192/bjp.2018.301
45. Kendall KM, Rees E, Bracher-Smith M, et al. Association of rare copy number variants with risk of depression. *JAMA Psychiatry*. 2019;76(8):818-825. doi:10.1001/jamapsychiatry.2019.0566
46. Lahey BB, Krueger RF, Rathouz PJ, Waldman ID, Zald DH. A hierarchical causal taxonomy of psychopathology across the life span. *Psychol Bull*. 2017;143(2):142-186. doi:10.1037/bul0000069
47. Stochl J, Khandaker GM, Lewis G, et al. Mood, anxiety and psychotic phenomena measure a common psychopathological factor. *Psychol Med*. 2015;45(7):1483-1493. doi:10.1017/S003329171400261X
48. Leussis MP, Madison JM, Petryshen TL. Ankyrin 3: genetic association with bipolar disorder and relevance to disease pathophysiology. *Biol Mood Anxiety Disord*. 2012;2:18. doi:10.1186/2045-5380-2-18
49. Cross-Disorder Group of the Psychiatric Genomics Consortium. Identification of risk loci with shared effects on five major psychiatric disorders: a genome-wide analysis. *Lancet*. 2013;381(9875):1371-1379. doi:10.1016/S0140-6736(12)62129-1
50. Bi C, Wu J, Jiang T, et al. Mutations of ANK3 identified by exome sequencing are associated with autism susceptibility. *Hum Mutat*. 2012;33(12):1635-1638. doi:10.1002/humu.22174
51. Lu HC, Mackie K. An introduction to the endogenous cannabinoid system. *Biol Psychiatry*. 2016;79(7):516-525. doi:10.1016/j.biopsych.2015.07.028
52. Moore TH, Zammit S, Lingford-Hughes A, et al. Cannabis use and risk of psychotic or affective mental health outcomes: a systematic review. *Lancet*. 2007;370(9584):319-328. doi:10.1016/S0140-6736(07)61162-3
53. Huang WJ, Chen WW, Zhang X. Endocannabinoid system: role in depression, reward and pain control. *Mol Med Rep*. 2016;14(4):2899-2903. doi:10.3892/mmr.2016.5585
54. Manseau MW, Goff DC. Cannabinoids and schizophrenia: risks and therapeutic potential. *Neurotherapeutics*. 2015;12(4):816-824. doi:10.1007/s13311-015-0382-6
55. Fry A, Littlejohns TJ, Sudlow C, et al. Comparison of sociodemographic and health-related characteristics of UK Biobank participants with those of the general population. *Am J Epidemiol*. 2017;186(9):1026-1034. doi:10.1093/aje/kwx246