

Heritage Across Borders

Association of Critical Heritage Studies ACHS 2018

4th Biennial Conference. 1-6th September, 2018, Zhejiang University, Hangzhou, China

SESSION 033 Cultural Heritage Initiatives for Social Inclusion/Against Social Exclusion

Reframing the Reactivation of Historic Urban Landscapes with Processes of Social Inclusion of Migrants and Local Communities: The case of Palermo (Sicily, Italy)

Dr. Federico Wulff Barreiro

Lecturer of Architecture Design and Urban Design

Welsh School of Architecture (WSA)

Cardiff University, UK

Our research currently explores the potential that multi-scalar processes of spatial production in historical urban landscapes may have in articulating processes of intercultural social inclusion

Our research currently explores the potential that multi-scalar processes of spatial production in historical urban landscapes may have in articulating processes of intercultural social inclusion

In the way that these processes might enable migrants, refugees and locals in risk of social and spatial exclusion to participate in the (re)definition and (co)production of social space

Our research currently explores the potential that multi-scalar processes of spatial production of the public realm may have in articulating processes of intercultural social inclusion

In the way that these processes might enable migrants, refugees and locals in risk of social and spatial exclusion to participate in the (re)definition and (co)production of social space

We are interested in analysing how participatory design strategies, focusing on social values of heritage related to identity and memory, might facilitate a collective engagement of diverse communities in the regeneration of their historical built environment.

EMUVE

Euro Mediterranean Urban Voids Ecology

Design-led research Project funded by the European Commission, focused on the development of innovative multi-scalar design strategies for the reactivation of degraded Euro-Mediterranean urban landscapes in crisis.

We work in collaborative design partnerships with City Councils (Barcelona, Marseille, Palermo), communities, NGOs, social activists and local universities.

EMUVE

Euro Mediterranean Urban Voids Ecology

Previous case studies



Barcelona:

local empowerment / grassroots governance for urban regeneration of post-industrial urban landscapes



Marseille:

multicultural social inclusion strategies in processes of architectural recycling and urban regeneration



Palermo:

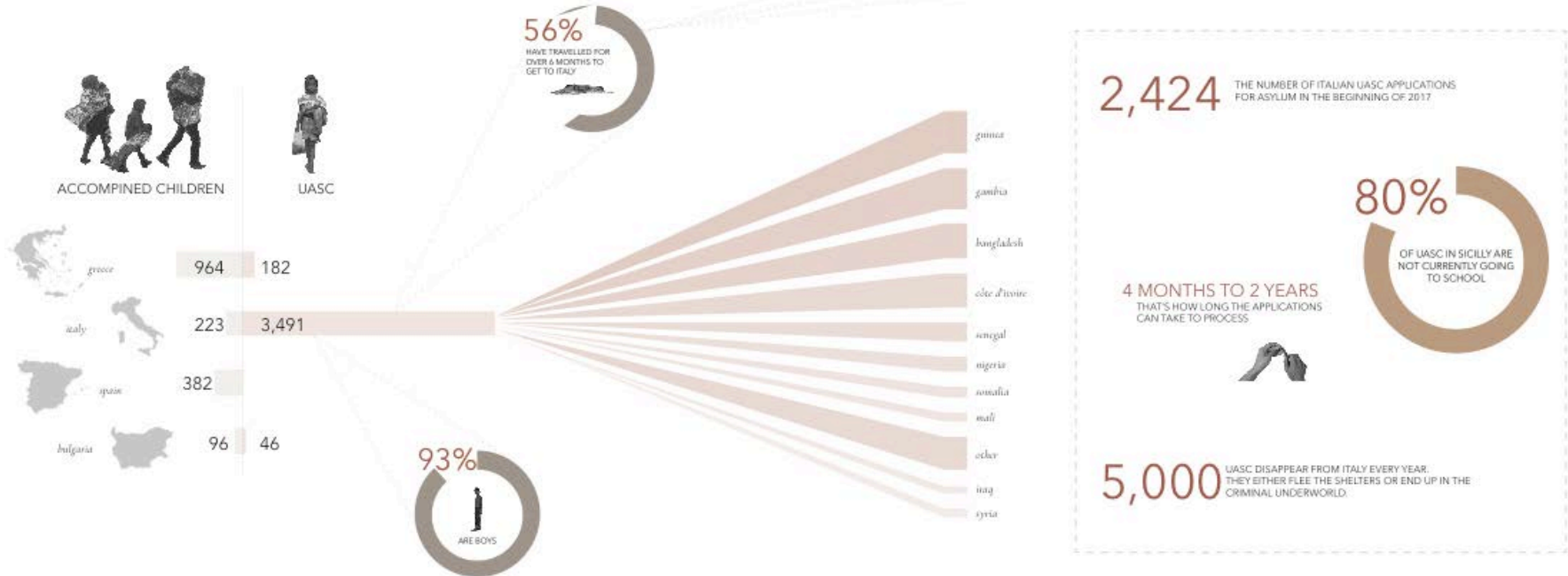
multi-scalar interventions of tactical placemaking and design strategies for intercultural centres as agents of intercultural social inclusion and urban reactivation of the dilapidated heritage of a UNESCO listed historic city centre

Why Sicily?

Why Palermo?



THE LONG JOURNEY TO SICILY: STATISTICS



Sicily, as most of the South of Italy, has been the **gateway to an important influx of immigration to Italy and Europe**, arriving mainly from Libya; more than 330,000 migrants arrived to Italy between 2015 and 2016

- Together the civil society and the local government of Palermo have adopted a welcoming approach towards the economic migrants and refugees arriving to the city.
- Palermo, the Sicilian capital, is a unique scenario to explore how migration and urban degradation issues could be turned into opportunities to re-think innovative strategies for the regeneration of this historic city and the reactivation of underused/degraded heritage that could become new nodes for social integration and civic engagement.

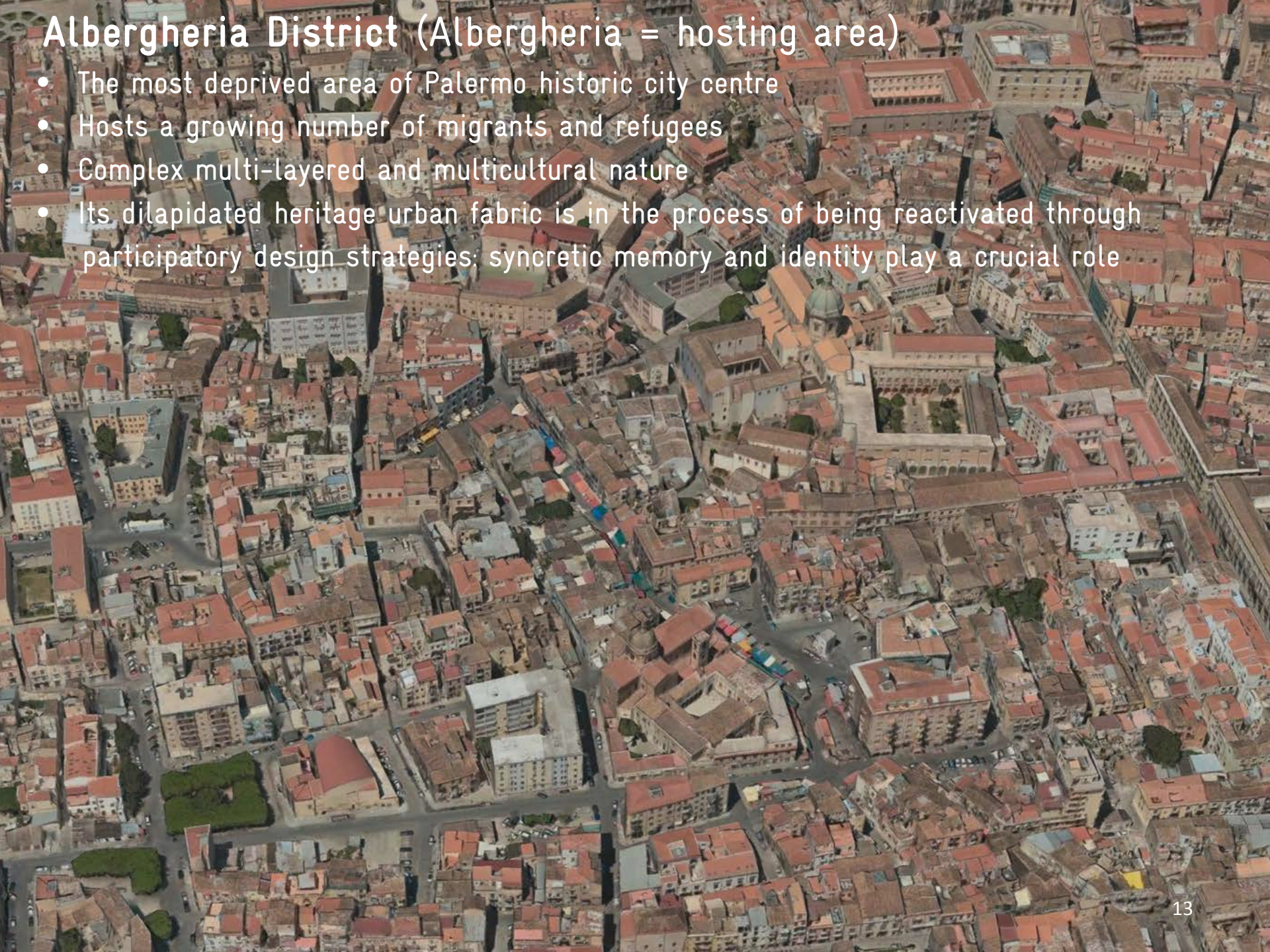


- Mr. Leoluca Orlando, 6 times re-elected Mayor of Palermo, has conceived the “Charter of Palermo” at the core of his political agenda. A Political Manifesto which frames migration as an inalienable human right, affirming the right to work, health care, social assistance, and housing to all refugees and migrants arriving to the city, on an equal basis with the locals.



Albergheria District (Albergheria = hosting area)

- The most deprived area of Palermo historic city centre
- Hosts a growing number of migrants and refugees
- Complex multi-layered and multicultural nature
- Its dilapidated heritage urban fabric is in the process of being reactivated through participatory design strategies; syncretic memory and identity play a crucial role



Albergheria: Ballaro Historic Market

- Economic drive of the district
- Social inclusion exchanges between locals and migrants
- Cultural tourists attractor to the district



Albergheria: San Saverio second hand-Market (at Ballaro's doorstep)

- Informal processes of exchange but also violent occupation of selling space
- Issues of criminality, stolen goods selling, drug dealing
- Implementation of a collaborative semi-formalized project, including sellers and local residents



Albergheria: Unique context of bottom-up and top-down synergies

The Albergheria is immersed in a unique process of multi-scalar reactivation through the current synergy reached between SOS Ballaro citizenship assembly and the social entities devoted to social integration of migrants, refugees and locals, together with the political agenda of Palermo City Council



Albergheria: Unique context of bottom-up and top-down synergies

SOS Ballaro assembly as a key element of this process is the space for the citizenship agreement and decision-making, where the majority of stakeholders, entities and other realities of the district are integrated, participate and are coordinated



Sicily, Palermo, Albergheria

Unique context of bottom-up and top-down synergies

EMUVE is contributing to this process:

Fostering participative practices aimed for the production of spaces for intercultural social-inclusion;

Exploring alternative models of social governance, citizenship empowerment and urban resilience;

Providing our research outcomes at an European level on the analysis of related best practices that could inform those processes;

The EMUVE Research aim in Palermo could be defined as:

The exploration of the potential that social values of heritage have in informing inclusive processes of spatial production in the historical public realm.

This might enable migrants, refugees and locals in risk of social and spatial exclusion, to participate in the (re)definition and (co)production of social space in these deprived heritage contexts.

This research aim has been analysed in the Albergheria district
in three design-led research scales:

At the strategic urban scale as a contribution for a future Urban Regeneration
Masterplan, starting from Ballaro 3.0. framework agreement between SOS Ballaro
and Palermo City Council

This research question has been explored in the Albergheria district in three design-led research scales:

At the strategic urban scale as a contribution for a future Urban Regeneration Masterplan, starting from Ballaro 3.0. framework agreement between SOS Ballaro and Palermo City Council

At the scale of its public spaces in relation to previous and future tactical urbanism catalysts practices, contributing to trigger sustainable urban and social regeneration changes over the long term and at a wider level

This research question has been explored in the Albergheria district in three design-led research scales:

At the strategic urban scale as a contribution for a future Urban Regeneration Masterplan, starting from Ballaro 3.0. framework agreement between SOS Ballaro and Palermo City Council

At the scale of its public spaces in relation to previous and future tactical urbanism catalysts practices, contributing to trigger sustainable urban and social regeneration changes over the long term and at a wider level

At the architectural scale, through the exploration of socially-inclusive and intercultural spatial production practices in heritage sites and the study of its urban and socio-economic impact over time

Bottom-up / top-down Synergy between SOS Ballarò citizen assembly

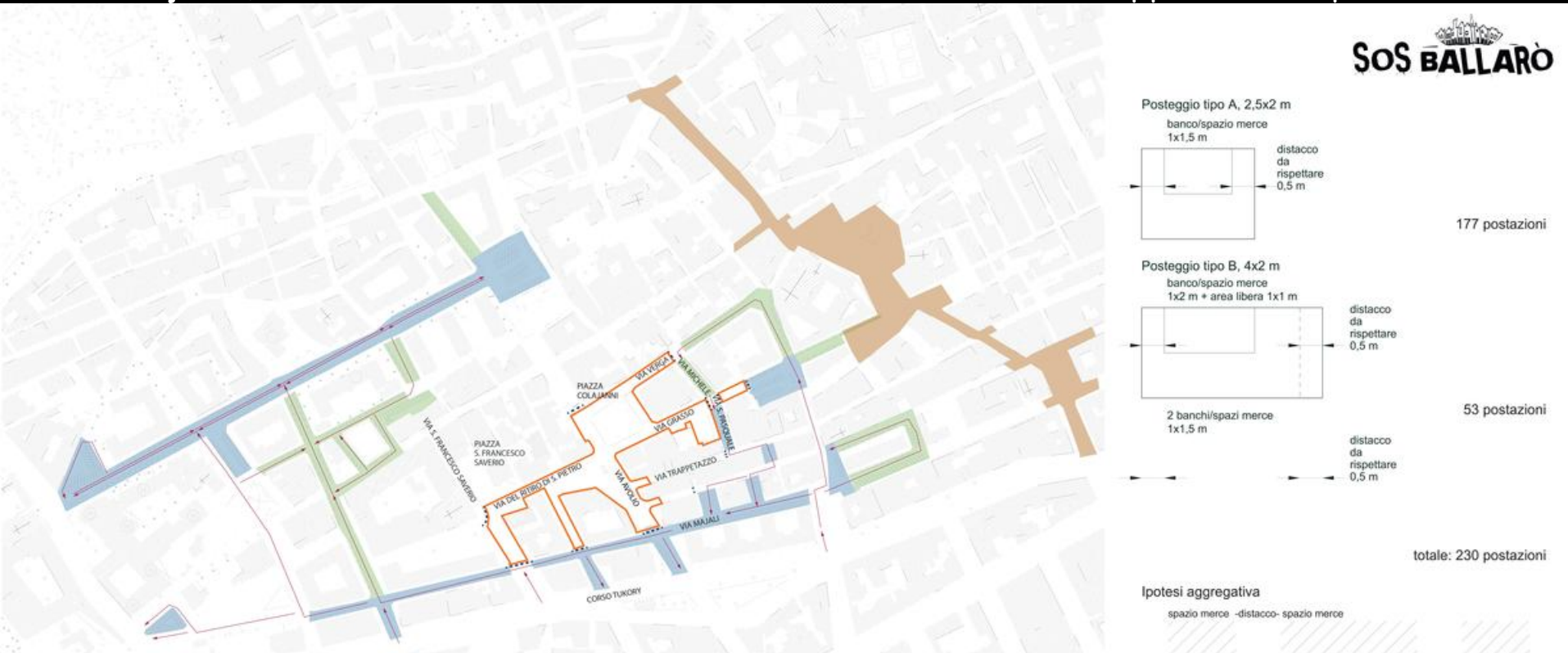
And Palermo City Council:

1. Accumulation of Social Capital through tactical Urbanism actions, empowerment
2. Political (ideological) alignment
3. Councilor of Historic City Centre background as an activist (founder SOS Ballaro)
4. Understanding of Research as a key resource: EMUVE EU project+PhD Manchester Univ. (Urban Ethn.)



Tangible consequences of this Synergy:

- Ballaro 3.0: A formal agreement defined as a framework for strategic actions aimed for the socio-economic and urban regeneration of the district, recently approved by the City Council in March 2018;
- Formal Agreement for the formalisation of San Saverio's Market, close to Piazza Colajanni, as one of the actions defined in Ballaro 3.0. as well approved in April 2018.

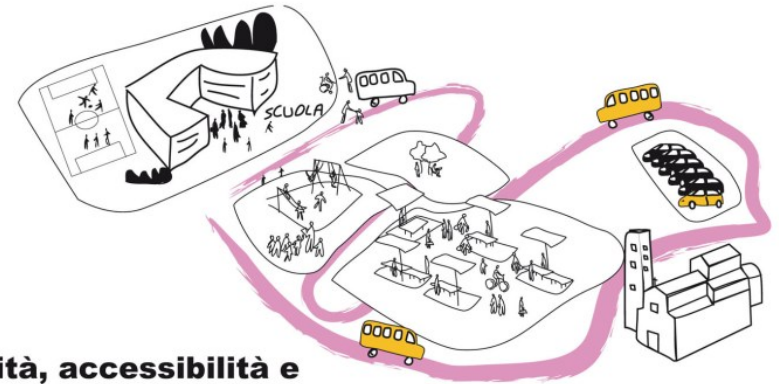


SOS BALLARÒ

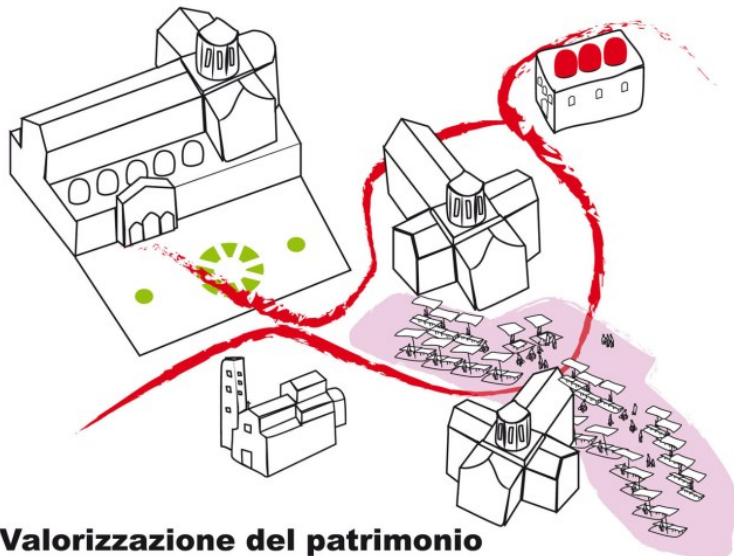
PROPOSTA DI SVILUPPO PARTECIPATIVO DEL QUARTIERE ALBERGHERIA



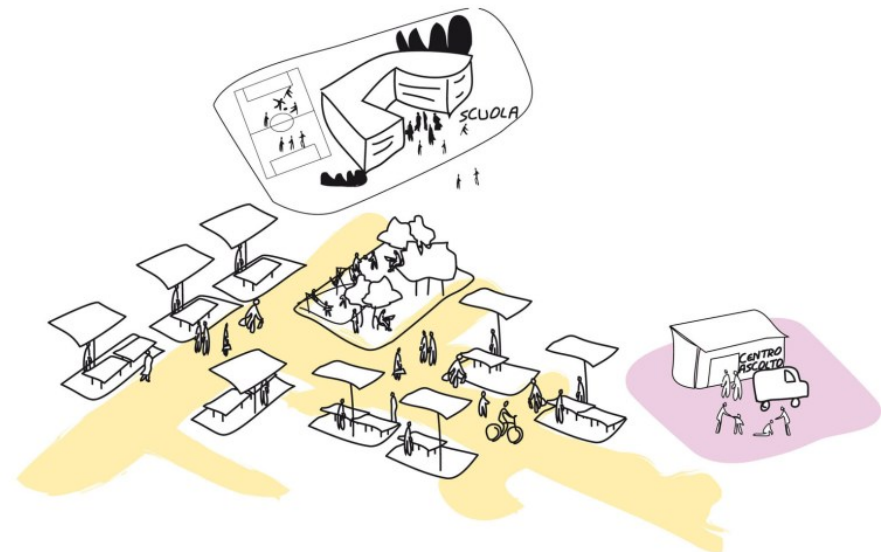
Rinascita del Mercato Storico Ballarò



Mobilità, accessibilità e spazio pubblico all'Albergheria



Valorizzazione del patrimonio storico-sociale e sviluppo sostenibile



Contrasto alla povertà e al disagio sociale

Ballaro 3.0 + EMUVE

EMUVE research was included in Ballaro 3.0. formal agreement framework and defined as follows:

'Table 1. *Interventions of Urban Regeneration and Civil Protection.*

Section *Buildings with serious structural issues and highly degraded*

Ballaro 3.0 + EMUVE

Within this requested collaboration at the architectural scale for Ballaro 3.0, EMUVE explores the spatial and programmatic reactivation of three key dilapidated heritage buildings:





Santa Maria del Soccorso ruined church as a second generation of Intercultural Centres, based on a critical analysis on the Italian government's programme of Intercultural Centres, implemented since the 90's.

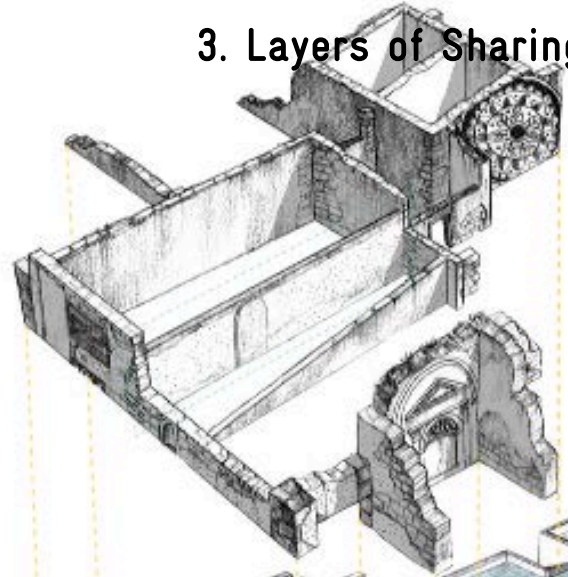
Santa Chiara Centre: Development of preliminary studies for a future Master Plan of the Centre, which is one of the most important entities of the district aimed for migrants and refugees social integration, that forms an active and engaged part of SOS Ballaro assembly

Palazzo Giallongo di Fiumetorto: as an apprentice school for locals and migrants on building restoration: Heritage social empowerment

Santa Maria del Soccorso: 1. Stakeholders network / 2. collective memory

3. Layers of Sharing / 4. Social values in tangible/intangible heritage

-  variety of materials consolidated over time: ceramic and glass elements embedded within concrete and ashlar
-  combination of ashlar and elements added over time in an eclectic manner; structural stability assessed on individual basis
-  structurally sound ashlar - base of the church and thick convent walls
-  improvised contemporary additions of concrete, plaster and tilework; low structural capacity



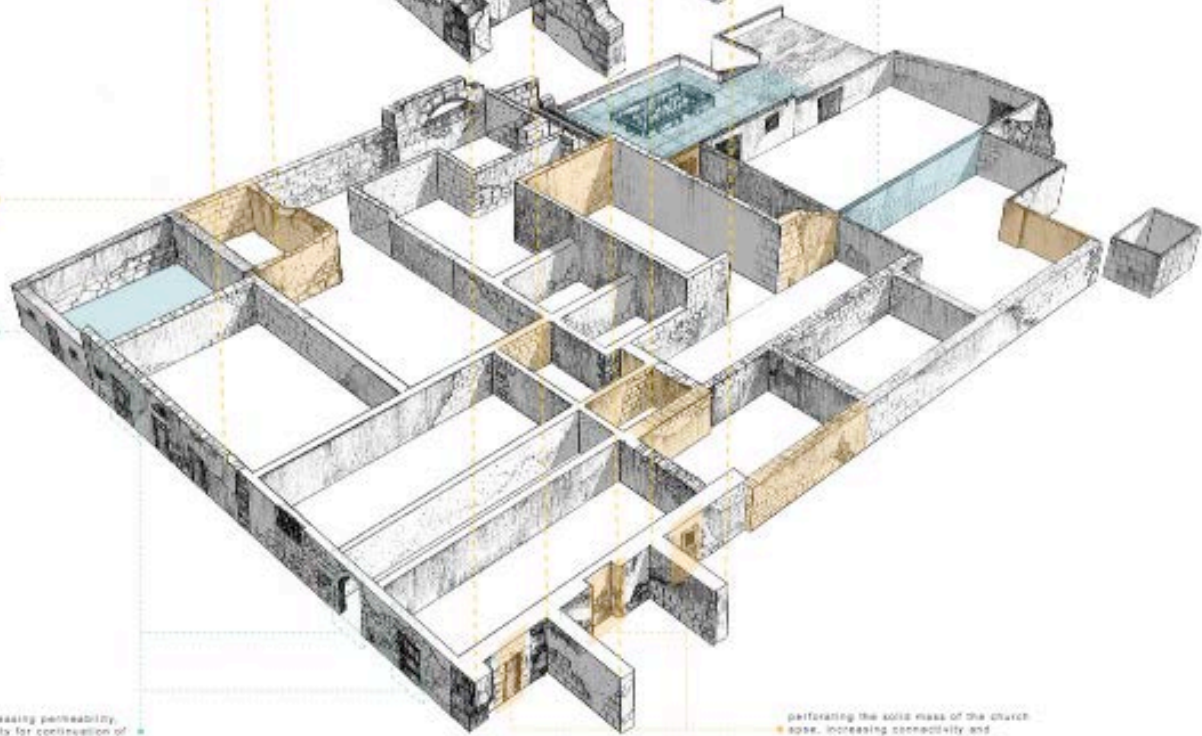
social heritage manifested as street art and murals; excavated presence and appearance of the elements on site



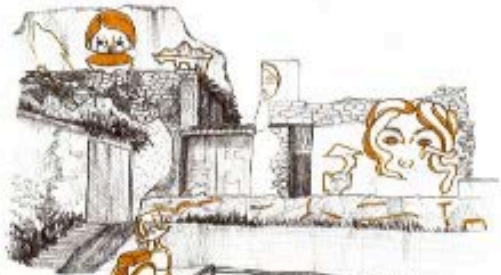
sacred & cherished visually, embodiment of the district's spirituality and attachment to the Catholic church

puncturing of the site through the highlighted element, further enabling circulation and permeability

existing usage of the site suggesting the proposed usage



demolition of an existing wall to increase exchange between proposed functions, taking inspiration from existing uses



casual and personalised occupation of the space; evidence of ownership through customisation

existing elements increasing permeability, providing an opportunity for continuation of the established circulation routes

perforating the solid mass of the church's walls, increasing connectivity and accessibility of the space behind it



socialisation of the site, way-finding through murals and signs; rehabilitation through carparking

Ballaro 3.0 + EMUVE

Santa Chiara Centre

- The most important support centre for migrants and persons in need for a century
- Preliminary studies for a future Master Plan of the Centre: coherence existing + future uses
- The basis for future funding application
- Urban re-connection to the surrounding urban fabric: cultural visitors-social engagement (7th B.C. Phoenician wall), semi-public spaces

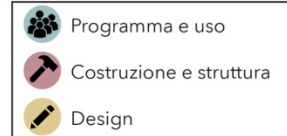
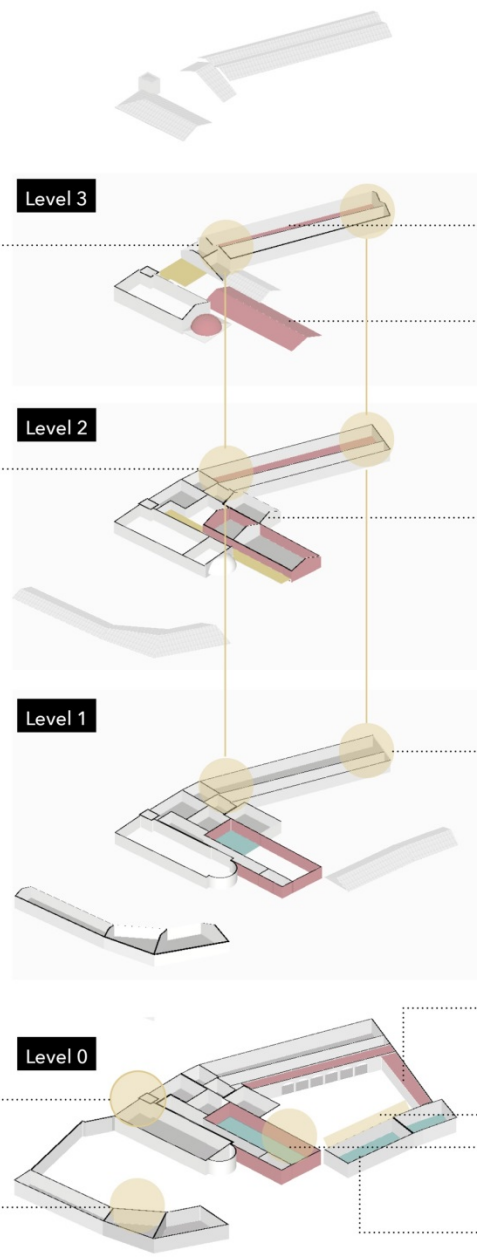
Santa Chiara:
Problemi identificati

Nessun accesso diretto individuale a tutti gli edifici

Scalinate multiple si diramano dalla scala principale

Patrimonio nascosto - La chiesa è chiusa al pubblico

La scalinata che conduce alle aule e' inadatta



I pavimenti sono strutturalmente instabili

Struttura del tetto inadatta. Nel complesso, l'intero edificio sottostante è instabile a causa dei diversi tipi di terreno presenti al di sotto della struttura.

Isolato da altre attività simili

Senza uscita. Passaggio solo attraverso una scala principale

Infiltrazioni d'acqua nei tetti a terrazza

Accesso all'ostello attraverso scale multiple.

Mancanza di luce naturale

Asilo nido adiacente ad un ostello

Ballaro 3.0 + EMUVE

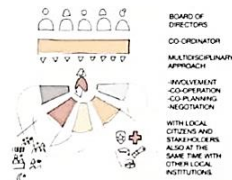
Palazzo Giallongo di Fiumetorto

1. Contemporary crafts intervention in Heritage: social empowerment (Ref. Cooperation agencies programmes in developing countries)
2. Phasing the design according to funding
3. Governance of the centre: stakeholders' involvement
4. Interactions throughout time, Gradient of exchanges between students and locals

PHASE 3 | PROGRAMME INTERDEPENDENCY



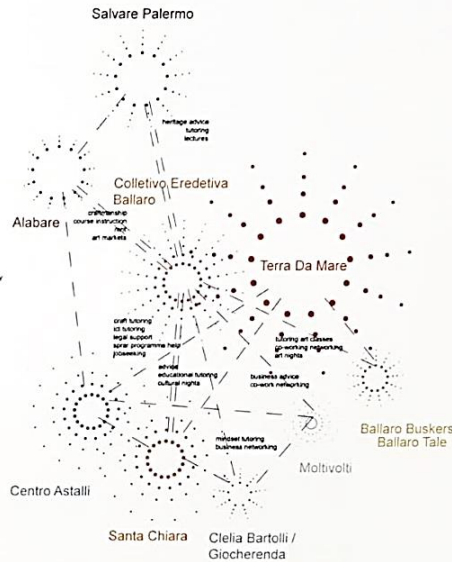
GOVERNANCE STRUCTURE



FUNDING

- EU ERDF AND HERITAGE FUNDING
- SPRAR PROGRAMME PROVIDES CHEAP LABOUR
- RENT FROM WORKSHOPS
- MONEY FROM EVENING COURSES
- INCOME FROM BAR
- LETTABLE MEETING ROOMS

STAKEHOLDER INVOLVEMENT NETWORK



Ongoing collaboration strategies between EMUVE and Palermo Stakeholders

1. EMUVE consultant role has been integrated within the Urban regeneration strategies of Ballaro 3.0 at the Urban, architectural and public space scales.
2. EMUVE design-led research proposals at the architectural scale discussed at a collaborative workshop with the citizenship, SOS Ballaro and Palermo City Council in November 2018.
3. Currently, a volunteering activity of EMUVE Architects together with SOS Ballaro members is taking place in Palermo to prepare the November workshop: participative analysis of EMUVE proposals, European funding bids search
4. An Exhibition will be organised by Palermo City Council in November 2018 about the outcomes of this collaborative workshop.
5. The collaborative design-led research proposals then will be submitted for European funding applications in 2019 (FEDER funding, UIA Funding)

Thank you



San Benedetto il Moro, Saint Patron of Palermo together with Santa Rosalia... was African. Painted 2 months ago by Igor Scalisi Palminteri (Ballaro Tale), integrated in SOS Ballaro. In one of our intervention sites in the Albergheria.