

This is an Open Access document downloaded from ORCA, Cardiff University's institutional repository: <https://orca.cardiff.ac.uk/id/eprint/136039/>

This is the author's version of a work that was submitted to / accepted for publication.

Citation for final published version:

Li, Zongnan, Li, Zhiyuan, Smith, Matthew W. L. and Gao, Yu 2020. A Herschel mapping of [C ii], [O i] and [O iii] lines from the circumnuclear region of M31. *Astrophysical Journal* 905 (2) , 138. 10.3847/1538-4357/abc5ba

Publishers page: <http://dx.doi.org/10.3847/1538-4357/abc5ba>

Please note:

Changes made as a result of publishing processes such as copy-editing, formatting and page numbers may not be reflected in this version. For the definitive version of this publication, please refer to the published source. You are advised to consult the publisher's version if you wish to cite this paper.

This version is being made available in accordance with publisher policies. See <http://orca.cf.ac.uk/policies.html> for usage policies. Copyright and moral rights for publications made available in ORCA are retained by the copyright holders.



## A *Herschel* mapping of [C II], [O I] and [O III] lines from the circumnuclear region of M31

ZONGNAN LI,<sup>1,2</sup> ZHIYUAN LI,<sup>1,2</sup> MATTHEW W. L. SMITH,<sup>3</sup> AND YU GAO<sup>4,5</sup>

<sup>1</sup>*School of Astronomy and Space Science, Nanjing University, Nanjing 210023, China*

<sup>2</sup>*Key Laboratory of Modern Astronomy and Astrophysics, Nanjing University, Nanjing 210023, China*

<sup>3</sup>*School of Physics & Astronomy, Cardiff University, The Parade, Cardiff CF24 3AA, UK*

<sup>4</sup>*Department of Astronomy, Xiamen University, Xiamen, Fujian 361005, China*

<sup>5</sup>*Purple Mountain Observatory and Key Laboratory for Radio Astronomy, Chinese Academy of Sciences, Nanjing 210023, China*

### ABSTRACT

The circumnuclear region of M31, consisting of multiphase interstellar medium, provides a close-up view of the interaction of the central supermassive black hole and surrounding materials. Far-infrared (FIR) fine structure lines and their flux ratios can be used as diagnostics of physical properties of the neutral gas in this region. Here we present the first FIR spectroscopic mapping of the circumnuclear region of M31 in [C II] 158  $\mu\text{m}$ , [O I] 63  $\mu\text{m}$  and [O III] 88  $\mu\text{m}$  lines with the *Herschel Space Observatory*, covering a  $\sim 500 \times 500$  pc ( $2' \times 2'$ ) field. Significant emissions of all three lines are detected along the so-called nuclear spiral across the central kpc of M31. The velocity field under a spatial resolution of  $\sim 50$  pc of the three lines are in broad consistency and also consistent with previous CO(3–2) line observations in the central region. Combined with existing [C II] and CO(3–2) observations of five other fields targeting on the disk, we derived the radial distribution of [C II]/CO(3–2) flux ratio, and found that this ratio is higher in the center than the disk, indicating a low gas density and strong radiation field in the central region. We also found that the [C II]/FIR ratio in the central region is  $5.4 (\pm 0.8) \times 10^{-3}$ , which exhibits an increasing trend with the galactocentric radius, suggesting an increasing contribution from old stellar population to dust heating towards the center.

*Keywords:* galaxies: individual (M31) — galaxies: ISM — ISM: clouds — galaxies: nuclei

### 1. INTRODUCTION

Galactic circumnuclear regions, in which the multiphase interstellar medium (ISM) and various stellar populations are actively interacting with the supermassive black holes (SMBHs), are crucial to our understanding of the accretion and feedback of SMBHs, and in turn the global evolution of the host galaxies. As the closest external spiral galaxy, the Andromeda galaxy (M31) gives us a unique opportunity to study the circumnuclear environment in a close-up view, thanks to its proximity ( $D \approx 785$  kpc, where  $1'' = 3.8$  pc, [McConnachie et al. 2005](#)), appropriate inclination ( $\sim 77^\circ$ ) and low line-of-sight extinction ( $A_V \lesssim 1$ , [Dong et al. 2016](#)). The most conspicuous structure of this environment is the so-called nuclear spiral, which consists of spiral-like filaments across the central few hundred parsecs of M31. Both optical emission ([Jacoby, Ford & Ciardullo 1985](#)) and extinction ([Dong et al. 2016](#)), and infrared (IR) emission ([Li et al. 2009](#)) from the nuclear spiral indicate that it is composed of neutral, dusty gas clouds with ionized outer layers. The investigation of dust ([Draine et al. 2014](#)) and molecular gas (e.g. [Melchior & Combes 2013](#); [Li et al. 2019, 2020](#)) has revealed that the kinetic temperature is higher in the nucleus than in the disk. However, the ionization/excitation mechanism of the nuclear spiral remains a long-standing puzzle, given the weak nuclear activity ([Li et al. 2011](#)) and the absence of on-going star formation ([Brown et al. 1998](#); [Groves et al. 2012](#); [Dong et al. 2015](#)) in this region.

Far infrared (FIR) atomic/ionic fine-structure lines, such as [C II] 158  $\mu\text{m}$ , [O I] 63  $\mu\text{m}$  and [O III] 88  $\mu\text{m}$ , arise from multiple ISM phases, and thus can be used as diagnostics of the physical conditions of the circumnuclear environment.

Specifically, due to the moderate ionization potential of carbon (11.26 eV), [C II] 158  $\mu\text{m}$  line is present in low-density diffuse ionized gas, neutral photodissociation regions (PDRs) and also diffuse molecular clouds (Petuchowski et al. 1993; Heiles 1994; Abel 2006). On the other hand, [O I] 63  $\mu\text{m}$  line is only found in neutral gas (PDRs and molecular clouds) since its ionization potential is 13.62 eV, very close to that of hydrogen; while [O III] 88  $\mu\text{m}$  is exclusively found in ionized gas because the production of  $\text{O}^{++}$  requires energetic photons (35.12 eV). These lines are also widely used as star formation rate (SFR) tracers (e.g. De Looze et al. 2014) since they are from the ISM that fuels and closely interacts with star formation. Among them, [C II] 158  $\mu\text{m}$  is most often investigated since it is typically the most luminous line in galaxies (e.g., Stacey et al. 1991). The relationship of SFR surface density and [C II] intensity has been extensively investigated in nearby galaxies (Herrera-Camus et al. 2015), such as M51 (Pineda et al. 2018), and also in M31 disk (Kapala et al. 2015). These studies all found tight correlations between the two quantities. However, since the circumnuclear region of M31 is lack of current star formation (e.g. Dong et al. 2015), we will not further discuss this correlation in this paper.

Moreover, [C II] 158  $\mu\text{m}$  usually acts as the main coolant for low density neutral gas (the bulk of neutral gas) due to its lower excitation energies and critical densities ( $\Delta E/k \sim 91$  K and  $n_{\text{crit}} \sim 3 \times 10^3 \text{ cm}^{-3}$ ), while [O I] 63  $\mu\text{m}$  is dominant in high density and temperature regime ( $\Delta E/k \sim 228$  K;  $n_{\text{crit}} \sim 8.5 \times 10^5 \text{ cm}^{-3}$ ). The neutral ISM is mainly heated by photoelectrons ejected by dust grains absorbing far-ultraviolet (FUV) photons within the range 6-13.6 eV (Draine et al. 1978). The energy of the heated ISM is later taken away by collisional excited FIR emission lines, and the gas is thus cooled. On the other hand, the dust grains can be heated by photons of nearly all energies (mostly 0.01-13.6 eV) and then re-radiated in total infrared (TIR, 8-1000  $\mu\text{m}$ ; Sanders & Mirabel 1996) band. Thus, the [C II]/TIR ratio can be an approximation of the theoretical photoelectric heating efficiency,  $\epsilon_{\text{PE}}$ , defined as the photoelectric heating rate divided by the dust grain photon absorption rate (Tielens & Hollenbach 1985). Investigations of these lines could give us insights about the physical properties of the ISM, in particular the M31 center.

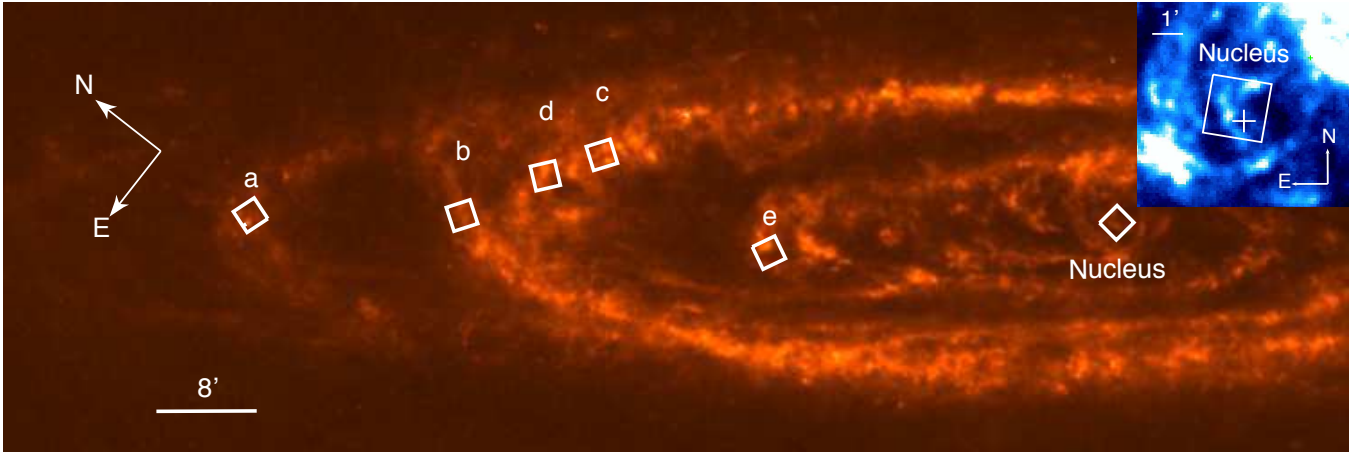
The first [C II] 158  $\mu\text{m}$  observations of M31 (Mochizuki 2000) was made with the *Infrared Space Observatory* (ISO; Kessler et al. 1996), resulting in a strip map of 31 positions with a spatial resolution of  $\sim 70''$ . Mochizuki (2000) detected [C II] flux in the central region at the level of  $1 \times 10^{-5} \text{ erg s}^{-1} \text{ cm}^{-2} \text{ sr}^{-1}$  and found a [C II]/100  $\mu\text{m}$  flux ratio of  $6 \times 10^{-3}$ , higher than that found in the Milky Way, which the author interpreted as due to the higher gas column density of the Galactic center. More recent observations (Kapala et al. 2015) carried out with *Herschel Space Observatory* (Pilbratt et al. 2010) targeting five regions in M31 disk have mapped the [C II] lines with much higher resolution (12'') and found the [C II]/TIR ratio increases with radius. Using the same set of data, Kapala et al. (2017) later claimed that since TIR emission involves the contribution from all photons that can heat dust, not just the FUV photons capable of ejecting photoelectrons, the [C II]/ $\text{FUV}_{\text{att}}$  ratio could be a better proxy of  $\epsilon_{\text{PE}}$ , where  $\text{FUV}_{\text{att}}$  stands for the attenuated FUV emission.

The circumnuclear region of M31 is a relatively small reservoir of neutral gas. To date, there is no unambiguous detection of circumnuclear atomic hydrogen reported. An upper limit of  $10^6 M_{\odot}$  was placed on the HI mass in the central 500 pc (Brinks 1984), and a more recent survey by Braun et al. (2009) yielded no substantial detection in the central kpc. Only until recently, molecular gas has been mapped in this region with sensitive IRAM 30m CO(2-1) (Melchior & Combes 2013) and JCMT CO(3-2) observations (Li et al. 2019), which suggest a small amount of molecular gas ( $\sim 3.7 \times 10^5 M_{\odot}$ ). In this work we present *Herschel* spectroscopic observations of the [C II] 158  $\mu\text{m}$ , [O I] 63  $\mu\text{m}$  and [O III] 88  $\mu\text{m}$  lines in the central 2 arcmin of M31, which is the first mapping of atomic phase gas in this region with a resolution comparable to molecular gas and dust observations. We make maps and analyze the flux ratios of these lines to study the ISM properties of the nuclear spiral and compare the results with that of the disk. The paper is organized as follows. The observations and data preparation are described in Section 2. The results are presented in Section 3, including the morphology and kinematics of the lines, and the analysis of their ratios. The discussion and implication of the results are presented in Section 4. A brief summary is given in Section 5.

## 2. OBSERVATIONS AND DATA PREPARATION

The observations of [C II] 158  $\mu\text{m}$ , [O I] 63  $\mu\text{m}$  and [O III] 88  $\mu\text{m}$  lines were carried out during 2012-6-19 and 2012-6-20 for a total time of 9.9 hours (obsid: 1342247148, 1342247149; PI: Z. Li) with *Herschel Space Observatory*. The





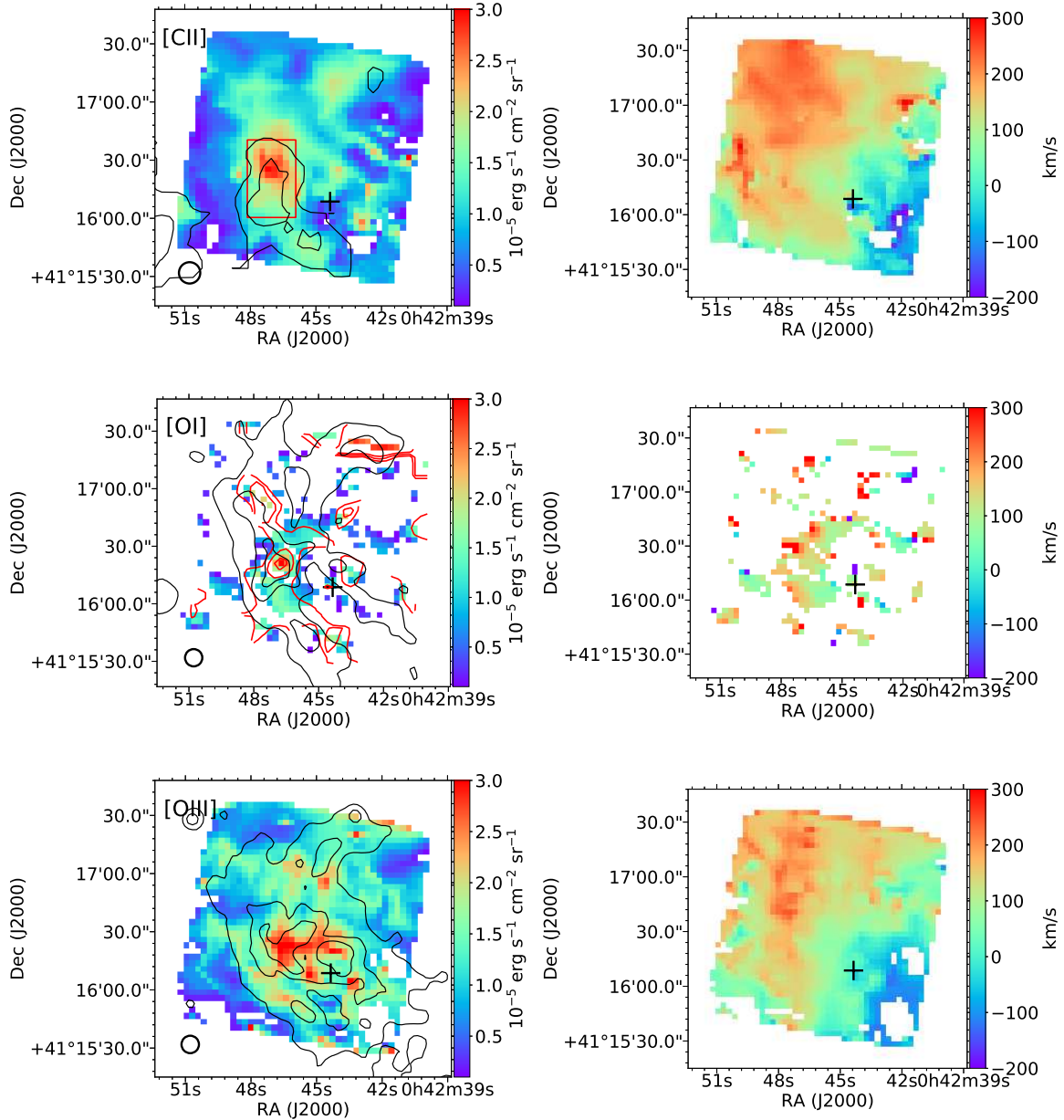
**Figure 1.** The footprint of the five SLIM fields (a-e) and the Nucleus field (‘Nucleus’) overlaid on the *Herschel*/SPIRE 250  $\mu\text{m}$  image of M31. The insert is a zoom-in of the nuclear region, where the nuclear spiral is located. The white cross in the insert marks the center of M31.

data were obtained with Photodetector Array Camera and Spectrometer (PACS; [Poglitsch et al. 2010](#)) using the  $3 \times 3$  raster mode covering a  $120'' \times 120''$  ( $\sim 500 \times 500$  pc) area of M31 nuclear spiral. This field is centering on  $([\text{RA}, \text{DEC}] = [10.691149, 41.275203])$ ,  $\sim 100$  pc northeast of the M31 center  $([\text{RA}, \text{DEC}] = [10.684793, 41.269065])$ . We adopted the unchopped grating scan mode, with an off-source field chosen at an inter-arm region  $\sim 500''$  northwest of the M31 nucleus. The wavelength, angular and velocity resolution of these lines are given in Table 1.

The data were reduced using the Herschel Interactive Processing Environment (HIPE, [Ott 2010](#)) version 14.0 standard pipeline (SPG 14). We made use of the level 2 data from the Herschel Science Archive (HSA), which are fully reduced and flux calibrated. We then applied the script provided by *Herschel* named “FittingPacsCubes\_mappingI.py”, which is suitable for PACS spectroscopy data cube analysis, to process the data and fit the spectra. The main steps are summarized below.

We started with the interpolated cube with a pixel size of  $3''$  since it not only satisfies the Nyquist sampling requirement for all three lines but also is smoother than the recommended projected cube. First, we cropped the noisy end of the spectra to avoid contamination from the spectral edges. Next, we used a first-order polynomial (second-order for the [O I] spectrum, since the signal is relatively weak and the baseline is not as stable as the other two lines) plus a Gaussian to fit each spectrum, and obtained the peak, center and width of the line. We then eliminated the spaxels with peak signal-to-noise ratio (SNR) smaller than 3 and obtained the integrated intensity and velocity maps of all three lines using the masked cube. For comparison of CO(3–2) and [C II] emission, we smoothed them to a common spatial resolution and regridded them to a pixel size of  $15''$ . The flux is converted to  $\text{erg s}^{-1} \text{cm}^{-2} \text{sr}^{-1}$ , and the velocity reference frame is Local Standard of Rest (LSR). Throughout this paper, we adopt a systemic velocity of M31 of  $-300 \text{ km s}^{-1}$  ([van den Bergh 1969](#)), a position angle of  $38^\circ$  and an inclination angle of  $77^\circ$  for the M31 disk ([McConnachie et al. 2005](#)), and an inclination angle of  $45^\circ$  for the central 1 kpc ([Ciardullo et al. 1988](#)).

We retrieved several ancillary data sets to assist our analysis: (1) The CO(3–2) map of the central kpc of M31 obtained from the James Clerk Maxwell Telescope (JCMT) with HARP raster mode ([Li et al. 2019](#)), taken with a resolution of  $15''$  and a typical RMS of 3.5 mK in a  $13 \text{ km s}^{-1}$  channel. (2) *Herschel* PACS imaging in [C II]  $158 \mu\text{m}$  and optical integral-field spectroscopy of five fields in M31 disk from the Survey of Lines In M31 (SLIM, [Kapala et al. 2015](#)). These fields are reduced in the same way as described above. (3) The CO(3–2) observations of the five SLIM fields from a JCMT large program HARP and SCUBA-2 High-Resolution Terahertz Andromeda Galaxy Survey (HASHTAG; [Li et al. 2020](#), M. Smith et al. in preparation). (4) Galaxy Evolution Explorer (GALEX) FUV ( $1350\text{--}1750 \text{ \AA}$ ) map of M31 ([Thilker et al. 2005](#)). (5) The dust mass surface density map of the whole galaxy ([Draine et al. 2014](#)), obtained with spectral energy distribution (SED) fitting of infrared emission. (6) Total far infrared (FIR) luminosity map from [Ford et al. \(2013\)](#), which was produced by integrating over six frequency bands,



**Figure 2.** Integrated intensity map (left) and velocity map (right) of [C II], [O I] and [O III]. [C II] is overlaid with CO(3-2) contours from Li et al. (2019), with levels 0.07 and 0.35 K km/s. [O I] is overlaid on *Herschel*/PACS 70 $\mu$ m emission from (Groves et al. 2012) (black). The red curves are smoothed [O I] contours to guide the eye. [O III] is overlaid on H $\alpha$  map (Devereux et al. 1994). The black cross marks the M31 center. The red rectangle in the first panel outlines the region where spectra are being averaged, as shown in Figure 3. For clarity, we did not show it in the [O I] and [O III] maps. This particular region is chosen to analyze the spectra to ensure a sufficient SNR in all four lines. The systemic velocity of M31 has been subtracted in the velocity map. The black circle in the lower left corner indicates the resolution of each map.

including *Spitzer* MIPS 70  $\mu$ m, *Herschel* PACS and SPIRE 100, 160, 250, 350, 500  $\mu$ m. The footprint of the five SLIM fields as well as the Nucleus field are shown in Figure 1.

### 3. RESULTS

#### 3.1. Morphology and kinematics

**Table 1.** Lines observed with PACS spectrometer.

Species	Rest wavelength ( $\mu\text{m}$ )	Velocity resolution <sup>(a)</sup> ( $\text{km s}^{-1}$ )	Angular resolution ( $''$ )	Flux <sup>(b)</sup> ( $10^{-5} \text{ erg s}^{-1} \text{ cm}^{-1} \text{ sr}^{-1}$ )
[O I]	63.18	98	9	$1.06 \pm 0.26$
[O III]	88.36	121	9	$1.85 \pm 0.17$
[C II]	157.74	239	11	$2.03 \pm 0.08$

NOTE—(a) The velocity and angular resolution are from PACS observers’ manual 2010 ([http://herschel.esac.esa.int/Docs/PACS/pdf/pacs\\_om.pdf](http://herschel.esac.esa.int/Docs/PACS/pdf/pacs_om.pdf)). (b) The average intensity of the lines measured within the red rectangle in Figure 2. The error represents the typical intensity error of each spaxel.

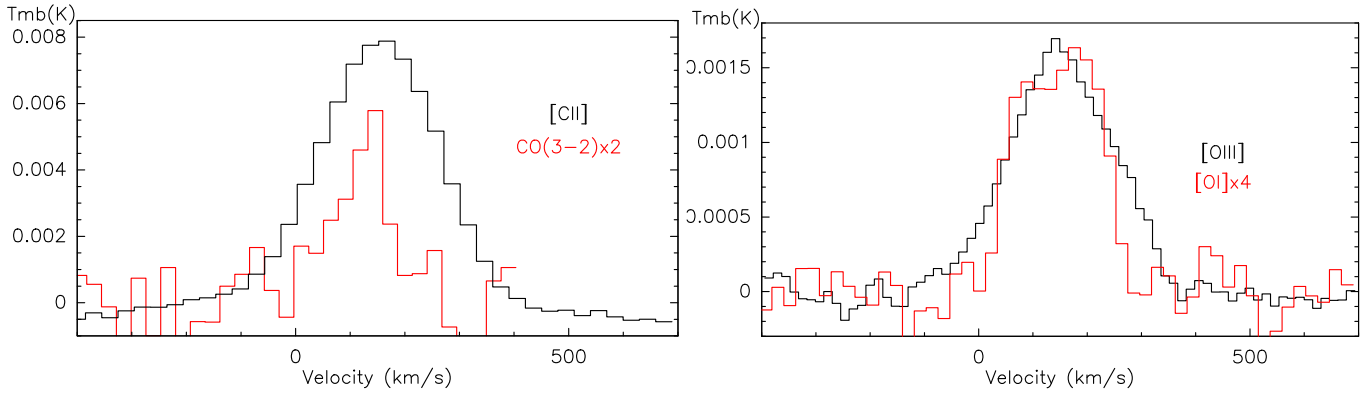
The integrated intensity and velocity maps of the three lines are shown in Figure 2. As shown in the upper left panel, the [C II] integrated intensity (color map) is in broad consistency with the CO(3-2) emission (contours) in the southern half of the nuclear spiral, while CO(3-2) is almost absent in the northern half, which is mainly due to the weak CO(3-2) emission in this region (Li et al. 2019). [O I] line is weak compared to the other two lines. Though the emission seems patchy due to the low SNR, there are still detections in the nuclear spiral region, and the morphology is roughly consistent with the dust emission. The [O III] emission has fibrous structure and broadly matches with the H $\alpha$  emission (Devereux et al. 1994), which is obtained with the Case Western Burrell Schmidt telescope at Kitt Peak National Observatory. The line-of-sight velocity fields of the three lines are shown in the right panels of Figure 2. The velocity patterns are similar, all indicating that the nuclear spiral structure is redshifted for  $\sim 200 \text{ km s}^{-1}$  with respect to M31’s systemic velocity, consistent with the CO(3-2) velocity obtained with JCMT (Li et al. 2019).

Averaged spectra of the the CO(3-2) and [C II] lines are shown in Figure 3 left panel, and that of [O I] and [O III] lines are shown in the right panel. To ensure a sufficient SNR, we only included the spaxels in the red rectangle shown in Figure 2, where the emission is strong for all the four lines. The average flux of each line measured within the rectangle is listed in Table 1. For the weak [O I] line, we further derived a  $3 \sigma$  upper limit,  $\sim 2 \times 10^{-6} \text{ erg cm}^{-2} \text{ s}^{-1} \text{ sr}^{-1}$ , over spaxels with  $\text{SNR} < 3$  throughout the map. After Gaussian fitting and deconvolution, we found the CO(3-2) and [C II] line are consistent in central velocity ( $\sim 150 \text{ km s}^{-1}$ ) and velocity dispersion ( $\sim 120 \text{ km s}^{-1}$ ). The central velocity of the [O I] and [O III] lines are also consistent with each other, while the [O III] line is broader than [O I] by  $\sim 30 \text{ km s}^{-1}$ . The relatively large difference in the velocity dispersion is mainly caused by the excess in the [O III] line at around  $270 \text{ km s}^{-1}$ , which is unseen in [O I]. Since we averaged spectra from the same region (the red rectangle in Figure 2), this excess could be an ionized gas component along the line-of-sight that is not traced by [O I]. Under a relatively high velocity resolution, the [O I] line exhibits two velocity components, centering at  $\sim 190 \text{ km s}^{-1}$  and  $\sim 80 \text{ km s}^{-1}$ , respectively. This is best understood as the [O I] line arising from two different arms of the nuclear spiral, as shown in the extinction map obtained with multi-band HST observations (Dong et al. 2016, Figure 3 therein).

### 3.2. Flux ratios

[C II] is the dominant coolant of neutral gas, which is mainly heated by UV photons with energy range 6-13.6 eV (equivalent to 912-2067 $\text{\AA}$ ). On the other hand, CO is mainly formed in dense H $_2$  gas and shielded by dust grains, which can be photodissociated by absorbing photons near 1000  $\text{\AA}$ . Clouds with higher metallicity and gas density will be able to shield the CO molecule more efficiently and thus enhance the CO emission. Meanwhile, FUV photons can both increase [C II] and decrease CO emission. As a result, the [C II]/CO(3-2) flux ratio varies with metallicity, gas density, and FUV flux (e.g. Rollig et al. 2006).

Combining the [C II] (Kapala et al. 2015) and CO(3-2) (Li et al. 2020) data of the five SLIM field, we derived the pixel-by-pixel radial distribution of the [C II]/CO(3-2) ratio, as shown in the Figure 4(a). For pixels with detection of only one line, we calculated the  $3\sigma$  upper limit of another line and then derived the upper or lower limit of the [C



**Figure 3.** Left: Averaged spectra of CO(3–2) and [C II]. Right: Averaged [O I] and [O III] spectra. These spectra are averaged over the rectangle region as shown in the first panel of Figure 2 to ensure a sufficient SNR. The systemic velocity of M31 has been subtracted.

$\text{[C II]}/\text{CO}(3-2)$  ratio. We computed the mean ratio including both upper and lower limits, using the software Astronomy SURVival Analysis (ASURV; Lavalley & Feigelson 1992). According to the KOSMA- $\tau$  PDR model (Störzner et al. 1996)<sup>1</sup>, which solves the chemistry and radiative transfer in PDR region with spherical geometry, [C II]/CO flux ratio decreases for increasing metallicity and gas density (Rollig et al. 2006). Since the metallicity of M31 decreases with increasing galactocentric radius (Draine et al. 2014), the high ratio in the center cannot be attributed to metallicity.

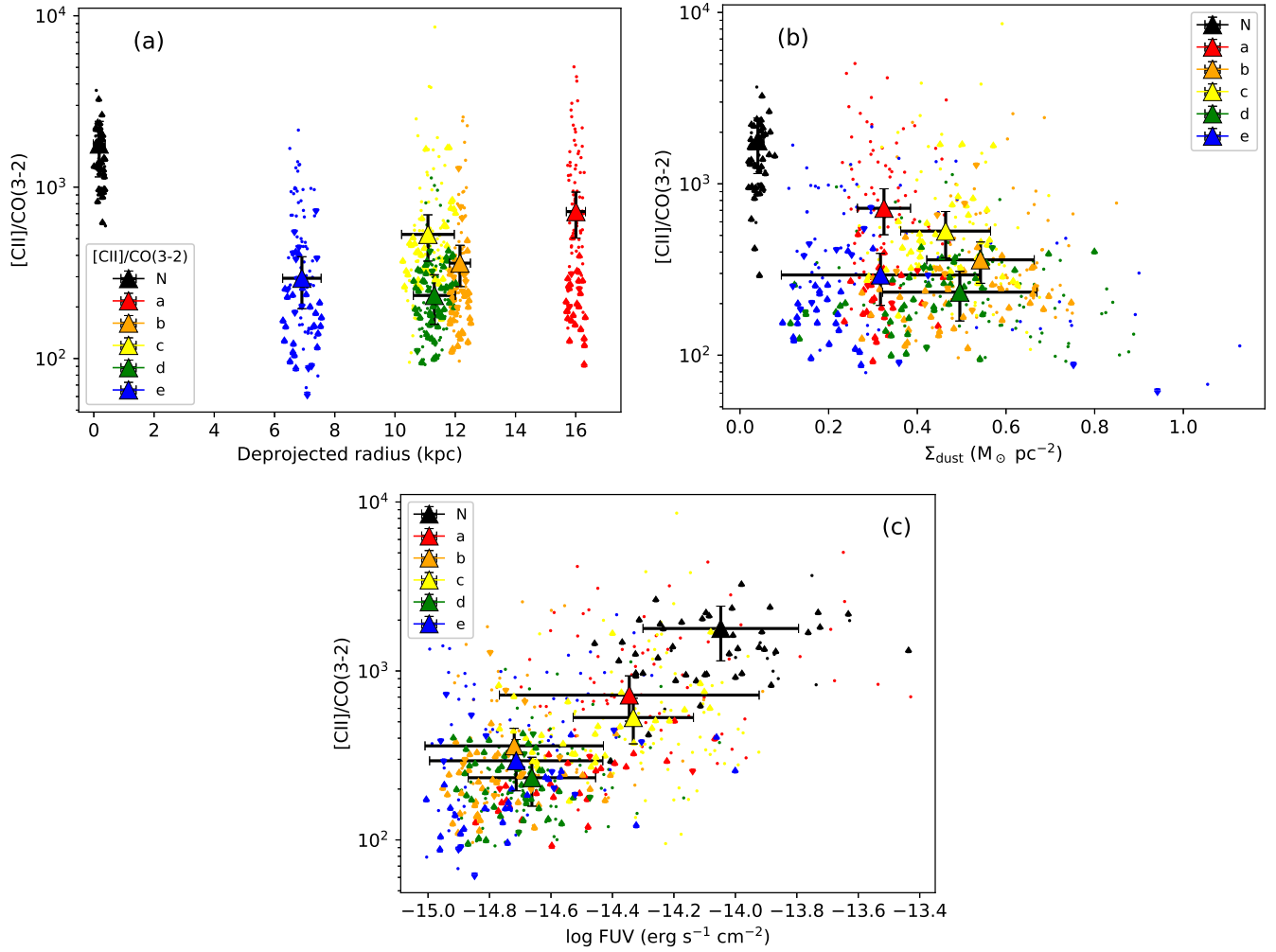
We thus compared the [C II]/CO(3–2) ratio with the dust mass surface density map from Draine et al. (2014), as shown in Figure 4(b). To evaluate the significance of this correlation, we calculated the Spearman’s rank coefficient  $\rho$  using only the pixels with both detections. The resultant  $\rho = -0.45$ , with a p-value (the probability under the null hypothesis of random variables)  $< 0.001$ . The negative correlation indicates that, in general, higher ratio indeed corresponds to lower gas surface density, if assuming a constant gas-to-dust ratio. We note that the gas-to-dust ratio may be lower in the central region (Li et al. 2019), which will even strengthen our conclusion. As a result, the high [C II]/CO ratio in the center indicates low gas density in this region, consistent with previous studies (Li et al. 2009; Dong et al. 2016; Li et al. 2019).

We then analyzed the correlation between FUV flux and [C II]/CO(3–2) ratio. The FUV emission from the M31 center is most likely to arise from old stellar populations (Brown et al. 1998; Dong et al. 2015; Viaene et al. 2017), while the SED fitting method adopted by Kapala et al. (2017) to derive the attenuated FUV flux is based on the young Galactic disk stellar population. Hence this method is not suitable for the central region. We thus simply used the GALEX FUV flux of each field, and found it positively correlated with the ratio, as indicated in Figure 4(c), with Spearman’s rank coefficient  $\rho = 0.39$  ( $p < 0.001$ ). This correlation suggests that the strong FUV radiation in the center is at least partly responsible for the high ratio.

We examined the [C II]/[O III] flux ratio, and found it ranges from 0.2 to 4.6 along the nuclear spiral, with an average value of  $\sim 1$ . The [C II]/[O I] flux ratio ranges from 0.5 to 11.6 (with only  $\sim 7\%$  pixels  $< 1$ ) and has a mean value of 2.1 in the nuclear spiral region, similar to that found in the disk fields ( $\sim 2.2$ , Kapala et al. 2015), which indicates [C II] is indeed the dominant coolant of neutral gas here. As a result, the [C II]/FIR ratio can be considered as an approximation of the photoelectric heating efficiency. Previous studies found this ratio in the range of  $0.1\% \sim 5\%$  (Bakes & Tielens 1994; Weingartner & Draine 2001), and varies dramatically in different environments. Kapala et al. (2015) found that the [C II]/TIR ratio increases with galactocentric radius using the measurements of the five SLIM fields in the disk of M31.

We measured the [C II]/FIR ratio of the central region and the five fields in the disk (Kapala et al. 2015). The FIR map is from Ford et al. (2013), and the [C II] map was convolved to a resolution of  $36''$  to match the resolution

<sup>1</sup> <https://hera.ph1.uni-koeln.de/~pdr/>

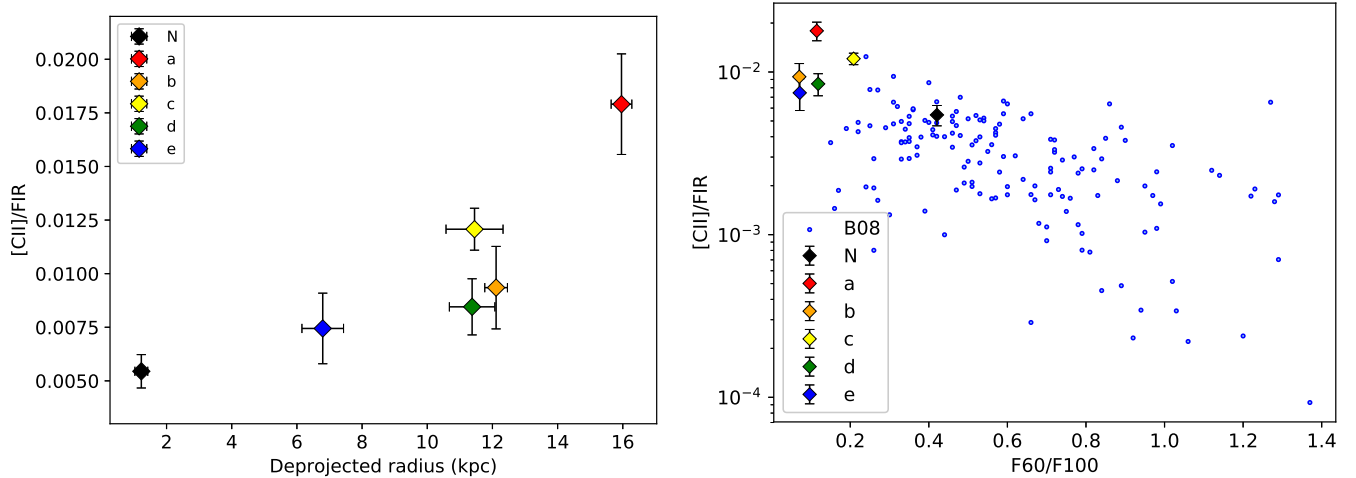


**Figure 4.** (a) The radial distribution of [C II]/CO(3-2) intensity ratio. The dots are data points with both CO(3-2) and [C II] detections, upward and downward triangles represent upper and lower limits of this ratio. The mean ratio (triangles) are calculated using software ASURV. The five SLIM fields (denoted by a-e) and Nucleus field (‘N’) are separated by different colors. The vertical and horizontal error bars represent the uncertainty of the mean ratio and the radial coverage of each field. (b) [C II]/CO(3-2) ratio vs. dust mass surface density ( $\Sigma_{\text{dust}}$ ; [Draine et al. 2014](#)). The symbols are the same as (a), while the horizontal errorbar represents the standard deviation of  $\Sigma_{\text{dust}}$ . (c) [C II]/CO(3-2) line ratio vs. GALEX FUV flux. The symbols are the same as (b).

of the FIR map. The ratios are calculated using the mean intensities in each field, as shown in Figure 5. The average [C II]/FIR ratio is  $5.4 (\pm 0.8) \times 10^{-3}$  in the central region, in good agreement with the [C II]/100 $\mu\text{m}$  ratio derived in [Mochizuki \(2000\)](#), which is  $6 \times 10^{-3}$ . We found that the increasing trend still holds after adding the Nucleus field, as shown in Figure 5 left panel. [Kapala et al. \(2017\)](#) claimed that the increasing trend of [C II]/TIR ratio with radius may be due to the contribution from old stellar population to dust heating increasing towards the center. Consequently, the infrared emission from dust increases, while the gas is not heated efficiently by the less energetic photons from old stellar populations, consistent with previous findings (e.g. [Dong et al. 2015](#); [Viaene et al. 2017](#)).

Previous studies have found a “deficit” of the [C II]/FIR ratio at high FIR luminosity (e.g. [Malhotra et al. 1997](#); [Stacey et al. 2010](#)) and high 60  $\mu\text{m}$ /100  $\mu\text{m}$  continuum flux ratio (F60/F100, a proxy for dust temperature; e.g. [Malhotra et al. 2001](#)). Possible reasons for this deficit include inefficient photoelectron ejection of dust grains, due to an increase in grain charge ([Malhotra et al. 2001](#); [Croxall et al. 2012](#)) and/or low polycyclic aromatic hydrocarbons fraction ([Helou et al. 2001](#)), and [C II] saturation at high luminosity (while the FIR increases linearly with FUV





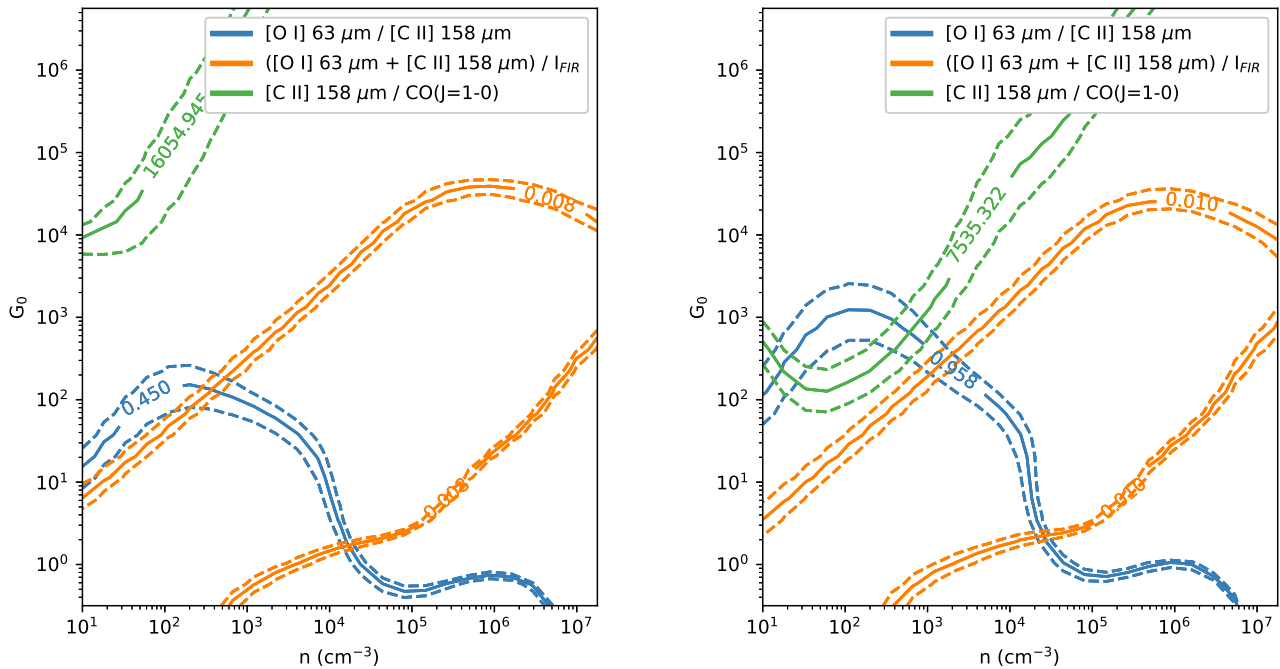
**Figure 5.** *Left:* The radial distribution of mean [C II] to FIR flux ratio (diamonds) of the SLIM fields (denoted by a-e) and the Nucleus field (‘N’). The vertical and horizontal error bars represent the uncertainty of the mean ratio and the radial coverage of each field. The FIR map is from Ford et al. (2013). *Right:* The [C II]/FIR flux ratio plotted against 60  $\mu\text{m}$ /100  $\mu\text{m}$  continuum flux ratio. The blue points are galaxies from the Brauher et al. (2008) sample (B08), and the diamonds are the fields of M31.

radiation; Gullberg et al. 2015). To investigate this deficit in M31, we calculated the mean F60/F100 ratio of each field using the Infrared Astronomical Satellite (IRAS) 60 and 100  $\mu\text{m}$  flux. For comparison, we made use of the Brauher et al. (2008) sample, one of the most complete extragalactic FIR emission line samples, observed by the *ISO*, which contains all morphologies of galaxies. We only used the unresolved galaxy sample. For them, we obtained the FIR flux using the IRAS 60 and 100  $\mu\text{m}$  flux given in Brauher et al. (2008) and the formula from Helou et al. (1988). The plot of [C II]/FIR ratio and F60/F100 are shown in Figure 5 right panel, in which a declining trend is evident. The five SLIM fields of M31 disk fall in the high [C II]/FIR, low F60/F100 regime, showing no obvious deficit, consistent with the overall quiescent and cold environment. The Nucleus field, on the other hand, with a significantly higher dust temperature than the disk (Draine et al. 2014), exhibits a lower [C II]/FIR ratio.

#### 4. DISCUSSION

The fraction of [C II] coming from ionized gas can affect our discussions above. This fraction is less than 50% in the five SLIM fields, according to the estimation of Kapala et al. (2015), with a typical value of  $\sim 20\%$ . We note that in the central region, due to higher FUV intensity and dust temperature (Draine et al. 2014), the fraction could be higher (Croxall et al. 2012). However, the [C II] emission from different components is hard to disentangle due to the missing of [N II] observations and low velocity resolution of the spectra. If we adopt the fraction of [C II] coming from ionized gas to be 53% (typical for normal spirals; Lapham et al. 2017) for the central region and 20% for the SLIM fields, the [C II]/CO(3–2) ratio is still higher in the center. As for the [C II]/FIR ratio, subtracting the fraction of [C II] from ionized gas will lower this ratio in the center and enhance the increasing trend with radius.

In addition to the dependency on gas density and FUV intensity, the abundance of different phases of carbon can also be affected by cosmic rays (CRs). CO embedded deep in molecular clouds that are shielded against UV photons can still be effectively destroyed by CRs via  $\text{He}^+$ , leaving the carbon in either C or  $\text{C}^+$  phase (Bisbas et al. 2015). As suggested by Bisbas, Schruha & van Dishoeck (2019), high level of CRs can result in decreasing of CO abundance, while [C II] abundance is barely affected or slightly increased. We note that in high density ( $\sim 10^5 \text{ cm}^{-3}$ ) and high kinetic temperature ( $\gtrsim 100 \text{ K}$ ) environments in the Milky Way, CO brightness can increase with CR ionization rate (Pellegriani et al. 2009). This could be due to efficient destruction of the  $\text{He}^+$  that is otherwise responsible for CO dissociation in these environments, while in average ISM conditions as well as in the M31 center, where the density and temperature are relatively low, CO can still be destroyed via  $\text{He}^+$  (Bisbas et al. 2017).



**Figure 6.** Line ratios on the  $G_0$  -  $n$  plane created by PDRT. Solid lines represent the mean ratios of the nuclear spiral, and dashed lines represent  $1\sigma$  error. The left and right panels are calculated using uncorrected and corrected [C II] and FIR flux, respectively.

We also derived the physical properties in the central region using the PDR model in the Photo Dissociation Region Toolbox (PDRT; Pound & Wolfire 2008; Kaufman et al. 2006)<sup>2</sup>. The model assumes a 2D slab of ISM, and solves the chemistry, radiative transfer and thermal balance in the PDR. Using the [O I]/[C II], ([O I]+[C II])/FIR and [C II]/CO(1-0) line ratios as diagnostics, the model can constrain gas density  $n$  (in units of  $\text{cm}^{-3}$ ) and incident FUV intensity  $G_0$  (in units of the local interstellar field value,  $1.6 \times 10^{-3} \text{ erg cm}^{-2} \text{ s}^{-1}$ ; Habing 1968), as shown in Figure 6. Here we assume a CO(3-2)/CO(1-0) line ratio of unity, according to Li et al. (2019).

Since the model only considers the PDR, [C II] from ionized gas should be subtracted, so we corrected the [C II] emission by assuming that 53% of the [C II] is from ionized gas (Lapham et al. 2017). In addition, the model assumes the cloud is illuminated by FUV emission from one side, while in the optically thin case, the emission is from both sides, so we divided the FIR flux by a factor of 2, as suggested by Kaufman et al. (1999). We also calculated the ratios using the uncorrected [C II] and FIR flux, as shown in the left panel of Figure 6. The intersections of the curves indicate the best-fit values. The minimum  $\chi^2$  distribution is at  $(n, G_0) = (1.78 \times 10^2, 10^2)$  and  $(n, G_0) = (10^3, 3.16 \times 10^2)$  for the uncorrected and corrected ratios, respectively.

The gas density derived from the PDR model is low compared to the Milky Way center ( $10^{3.5} \text{ cm}^{-3}$ ; Oka et al. 2012), while consistent with previous studies of M31 center (e.g. Dong et al. 2015). The relatively low gas density is also consistent with the high [C II]/CO(3-2) ratio in this region, as discussed above. To have a consistency check of the radiation field intensity of M31 center, we calculated the mean stellar density using the total stellar mass of  $1.4 \times 10^{10} M_\odot$  within the central 680 pc (Dong et al. 2015), resulting in  $\sim 45 M_\odot \text{ pc}^{-3}$ . This value is approximately two orders of magnitude higher than the local value ( $\sim 0.1 M_\odot \text{ pc}^{-3}$ ; Holmberg & Flynn 2000), hence the radiation field intensity  $G_0 \sim 300$  is reasonable. The radiation field intensity of M31 center is comparable to other nearby nuclei, such as M33 (Kramer et al. 2020), NGC 3184 and NGC 628 (Abdullah et al. 2017), while stronger than the Milky Way disk ( $G_0 \sim 1\text{-}30$ ; Pineda et al. 2013).

<sup>2</sup> <http://dustem.astro.umd.edu/pdrt/>

## 5. SUMMARY

We have carried out the first mapping of FIR fine structure lines [C II], [O I] and [O III] on the nuclear spiral of M31 with *Herschel* PACS spectroscopic observations. Our main results are as follows:

- (i) The three lines all exhibit significant emission along the nuclear spiral, while [O I] has a lower SNR and appears more patchy than the other two. The morphology of [C II] emission is consistent with CO(3–2) in the southern half of the nuclear spiral, while [O III] is more similar to H $\alpha$  emission arising from ionized gas.
- (ii) The [C II]/CO(3–2) ratio is higher in M31 center than in the disk. We found that this ratio has a positive correlation with the FUV flux, and a negative correlation with the dust mass surface density.
- (iii) The [C II]/FIR ratio is  $5.4 (\pm 0.8) \times 10^{-3}$  in the central region which is lower than in the disk. This ratio has an increasing trend with galactocentric radius, which could be due to an increasing contribution from old stellar populations to dust heating towards the center.

Future observations of the [C I] line would enable us to determine the abundance of carbon in different phases, and also the fraction of the molecular gas that cannot be traced by CO (the so-called CO-dark gas) in the circumnuclear region. Furthermore, combining the FIR line observations with our optical integrated field spectroscopy (Z. Li et al. in preparation), we will be able to build a comprehensive view of the kinematics and ionization mechanisms of the multiphase ISM in this region.

*Herschel* is an ESA space observatory with science instruments provided by European-led Principal Investigator consortia and with important participation from NASA. The James Clerk Maxwell Telescope is operated by the East Asian Observatory on behalf of The National Astronomical Observatory of Japan; Academia Sinica Institute of Astronomy and Astrophysics; the Korea Astronomy and Space Science Institute; Center for Astronomical Mega-Science (as well as the National Key Research and Development Program of China with No. 2017YFA0402700). Additional funding support is provided by the Science and Technology Facilities Council of the United Kingdom and participating universities in the United Kingdom and Canada. ZNL and ZYL acknowledge support by the National Key Research and Development Program of China (2017YFA0402703) and National Natural Science Foundation of China (grant 11873028). YG acknowledges funding from National Key Research and Development Program of China (Grant No. 2017YFA0402704), National Natural Science Foundation of China Grant No. 11861131007 and 11420101002, and Chinese Academy of Sciences Key Research Program of Frontier Sciences (Grant No. QYZDJ-SSW-SLH008). MWLS acknowledges funding from the UK Science and Technology Facilities Council consolidated grant ST/K000926/1.

## REFERENCES

- Abdullah, A., Brandl, B. R., Groves, B., et al. 2017, *ApJ*, 842, 4
- Abel, N. P. 2006, *MNRAS*, 368, 1949
- Bakes, E. L. O., & Tielens, A. G. G. M. 1994, *ApJ*, 427, 822
- Bisbas, T. G., Papadopoulos, P. P., & Viti, S. 2015, *ApJ*, 803, 37
- Bisbas, T. G., van Dishoeck, E. F., Papadopoulos, P. P., et al. 2017, *ApJ*, 839, 90
- Bisbas, T. G., Schrubba, A., & van Dishoeck, E. F. 2019, *MNRAS*, 485, 3097
- Brauher, J. R., Dale, D. A., & Helou, G. 2008, *ApJS*, 178, 280
- Braun R., Thilker D. A., Walterbos R. A. M., Corbelli E., 2009, *ApJ*, 695, 937
- Brinks E., 1984, . PhD thesis, Univ. Leiden, Leiden
- Brown, T. M., Ferguson, H. C., Stanford, S. A., & Deharveng, J.-M. 1998, *ApJ*, 504, 113
- Ciardullo R., Rubin V. C., Ford W. K., Jr., Jacoby G. H., Ford H. C., 1988, *AJ*, 95, 438
- Croxall, K. V., Smith, J. D., Wolfire, M. G., et al. 2012, *ApJ*, 747, 81
- De Looze, I., Cormier, D., Lebouteiller, V., et al. 2014, *A&A*, 568, A62
- Devereux, N. A., Price, R., Wells, L. A., & Duric, N. 1994, *AJ*, 108, 1667
- Dong, H., Li, Z., Wang, Q. D., et al. 2015, *MNRAS*, 451, 4126
- Dong H., Li Z., Wang Q. D., Lauer T. R., Olsen K. A. G., Saha A., Dalcanton J. J., Groves B. A., 2016, *MNRAS*, 459, 2262
- Draine, B. T. 1978, *ApJS*, 36, 595

- Draine B. T., Aniano, G., Krause, O., et al., 2014, *ApJ*, 780, 172
- Ford G. P. et al., 2013, *ApJ*, 769, 55
- Groves B. et al., 2012, *MNRAS*, 426, 892
- Gullberg, B., De Breuck, C., Vieira, J. D., et al. 2015, *MNRAS*, 449, 2883
- Habing, H. J. 1968, *BAN*, 19, 421
- Heiles, C. 1994, *ApJ*, 436, 720
- Helou, George, et al., 1988, *ApJS*, 68:151-172
- Helou, G., Malhotra, S., Hollenbach, D. J., Dale, D. A., & Contursi, A. 2001, *ApJL*, 548, L73
- Herrera-Camus, R., Bolatto, A. D., Wolfire, M. G., et al. 2015, *ApJ*, 800, 1
- Holmberg, J., & Flynn, C. 2000, *MNRAS*, 313, 209
- Jacoby G. H., Ford H., Ciardullo R., 1985, *ApJ*, 290, 136
- Kapala M. J. et al., 2015, *ApJ*, 798, 24
- Kapala, M. J., Groves, B., Sandstrom, K., et al. 2017, *ApJ*, 842, 128
- Kaufman, M. J., Wolfire, M. G., & Hollenbach, D. J. 2006, *ApJ*, 644, 283
- Kaufman, M. J., Wolfire, M. G., Hollenbach, D. J., & Luhman, M. L. 1999, *ApJ*, 527, 795
- Kessler M.F., Steinz J.A., Anderegg M.E., et al., 1996, *A&A*315, L27
- Kramer, C., Nikola, T., Anderl, S., et al., 2020, *arXiv:2005.03683*
- Lapham, R. C., Young, L. M., & Crocker, A. 2017, *ApJ*, 840, 51
- Lavalley, M., Isobe, T., & Feigelson, E. 1992, *Astronomical Data Analysis Software and Systems I*, 245
- Li Z., Garcia M. R., Forman W. R., Jones C., Kraft R. P., Lal D. V., Murray S. S., Wang Q. D., 2011, *ApJ*, 728, L10
- Li Z., Li Z., Smith M.W.L., Wilson C.D., Gao Y., et al. 2020, *MNRAS*, 492, 195
- Li Z., Li Z., Zhou P., Gao Y., Jiang X.-J., Dong H., 2019, *MNRAS*, 484, 964
- Li, Z., Wang, Q. D., & Wakker, B. P., 2009, *MNRAS*, 397, 148
- Malhotra S. et al., 1997, *ApJ*, 491, L27
- Malhotra, S., Kaufman, M. J., Hollenbach, D., et al. 2001, *ApJ*, 561, 766
- McConnachie A. W., Irwin M. J., Ferguson A. M. N., Iбата R. A., Lewis G. F., Tanvir N., 2005, *MNRAS*, 356, 979
- Melchior A. L., Combes F., 2013, *A&A*, 549, A27
- Mochizuki K., 2000, *A&A*, 363, 1123
- Muraoka K. et al., 2007, *PASJ*, 59, 43
- Oka, T., Onodera, Y., Nagai, M., et al. 2012, *ApJS*, 201, 14
- Ott, S. 2010, in *ASP Conf. Ser. 434, Astronomical Data Analysis Software and Systems XIX*, ed. Y. Mizumoto et al. (San Francisco, CA: ASP), 139
- Pellegrini, E. W., Baldwin, J. A., Ferland, G. J., Shaw, G., & Heathcote, S. 2009, *ApJ*, 693, 285
- Petuchowski, S. J., & Bennett, C. L. 1993, *ApJ*, 405, 591
- Pilbratt, G. L., Riedinger, J. R., Passvogel, T., et al. 2010, *A&A*, 518, L1
- Pineda, J. L., Langer, W. D., Velusamy, T., & Goldsmith, P. F. 2013, *A&A*, 554, A103
- Pineda J. L., et al., 2018, *ApJ*, 869, L30
- Poglitsch, A., Waelkens, C., Geis, N., et al. 2010, *A&A*, 518, L2
- Pound, M. W., & Wolfire, M. G. 2008, in *ASP Conf. Ser. 394, Astronomical Data Analysis Software and Systems*, ed. R. W. Argyle et al. (San Francisco, CA: ASP), 654
- Rollig, M., Ossenkopf, V., Jeyakumar, S., Stutzki, J., & Sternberg, A. 2006, *A&A*, 451, 917
- Sanders, D. B., & Mirabel, I. F. 1996, *ARA&A*, 34, 749
- Stacey, G. J., Geis, N., Genzel, R., et al. 1991, *ApJ*, 373, 423
- Stacey G. J., Hailey-Dunsheath S., Ferkinhoff C., Nikola T., Parshley S. C., Benford D. J., Staguhn J. G., Fiolet N., 2010, *ApJ*, 724, 957
- Störzer H., Stutzki J. & Sternberg A. 1996, *A&A*, 310, 592
- Thilker, D. A., Hoopes, C. G., Bianchi, L., et al. 2005, *ApJL*, 619, L67
- Tielens, A. G. G. M., & Hollenbach, D. 1985, *ApJ*, 291, 722
- van den Bergh S., 1969, *ApJS*, 19, 145
- Viaene S. et al., 2017, *A&A*, 599, A64
- Weingartner, J. C., & Draine, B. T. 2001, *ApJS*, 134, 263
- Wilson C. D. et al., 2009, *ApJ*, 693, 1736