

This is an Open Access document downloaded from ORCA, Cardiff University's institutional repository: <https://orca.cardiff.ac.uk/id/eprint/173774/>

This is the author's version of a work that was submitted to / accepted for publication.

Citation for final published version:

Mukherjee, Somnath, Qi, Cathy, Shaw, Rachel, Jones, Christopher M., Bridgewater, John A., Radhakrishna, Ganesh, Patel, Neel, Holmes, Jane, Virdee, Pradeep S., Tranter, Bethan, Parsons, Philip, Falk, Stephen, Wasan, Harpreet S., Ajithkumar, Thankamma V., Holyoake, Daniel, Roy, Rajarshi, Scott-Brown, Martin, Hurt, Christopher N., O'Neill, Eric, Sebag-Montefiore, David, Maughan, Tim S., Hawkins, Maria A. and Corrie, Pippa 2024. Standard or high dose chemoradiotherapy, with or without the protease inhibitor nelfinavir, in patients with locally advanced pancreatic cancer: The phase 1/randomised phase 2 SCALOP-2 trial. *European Journal of Cancer* 209 , 114236. 10.1016/j.ejca.2024.114236

Publishers page: <http://dx.doi.org/10.1016/j.ejca.2024.114236>

Please note:

Changes made as a result of publishing processes such as copy-editing, formatting and page numbers may not be reflected in this version. For the definitive version of this publication, please refer to the published source. You are advised to consult the publisher's version if you wish to cite this paper.

This version is being made available in accordance with publisher policies. See <http://orca.cf.ac.uk/policies.html> for usage policies. Copyright and moral rights for publications made available in ORCA are retained by the copyright holders.



FIGURES

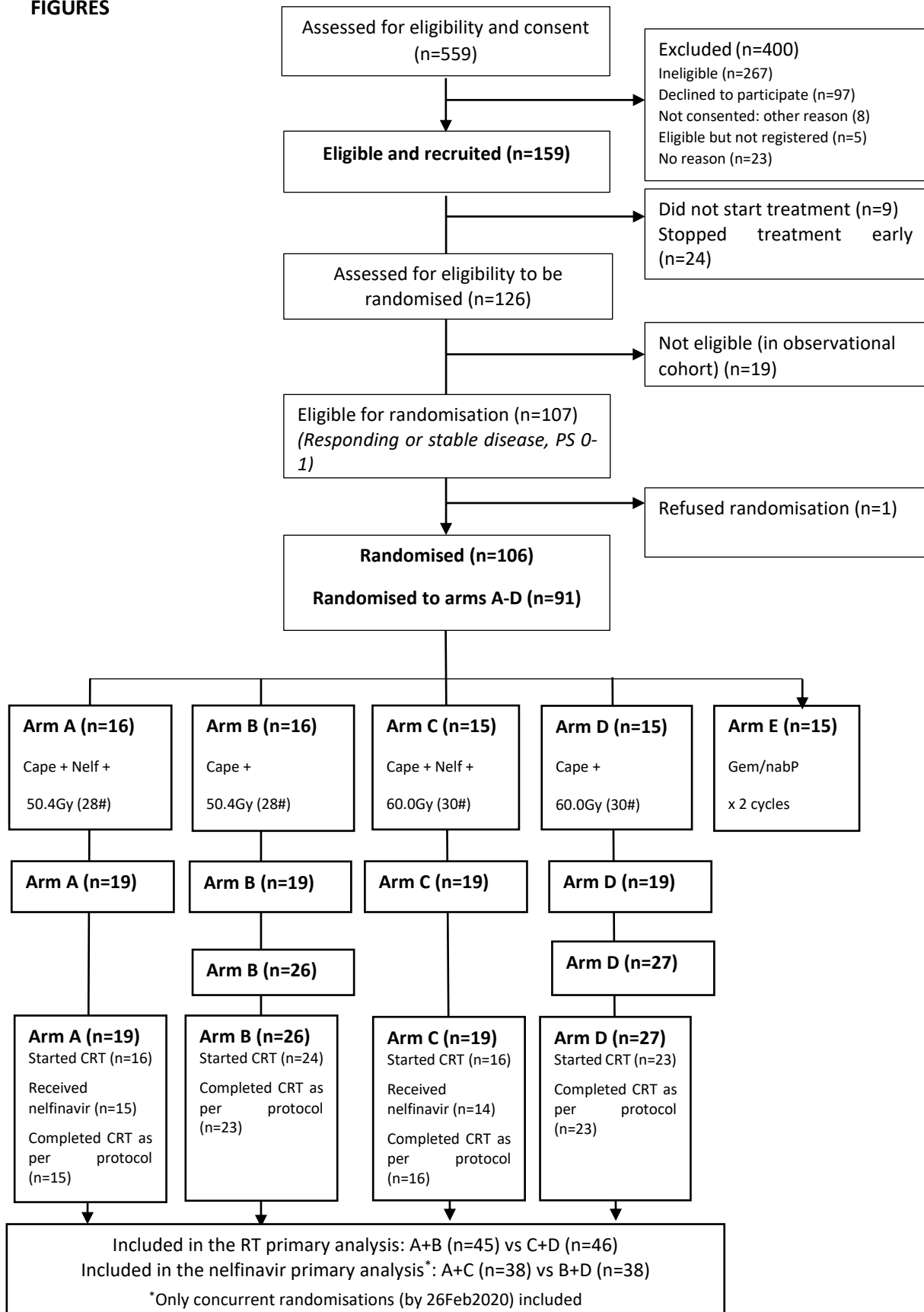


Figure 1: CONSORT flow diagram of stage 2 of the SCALOP-2 trial.

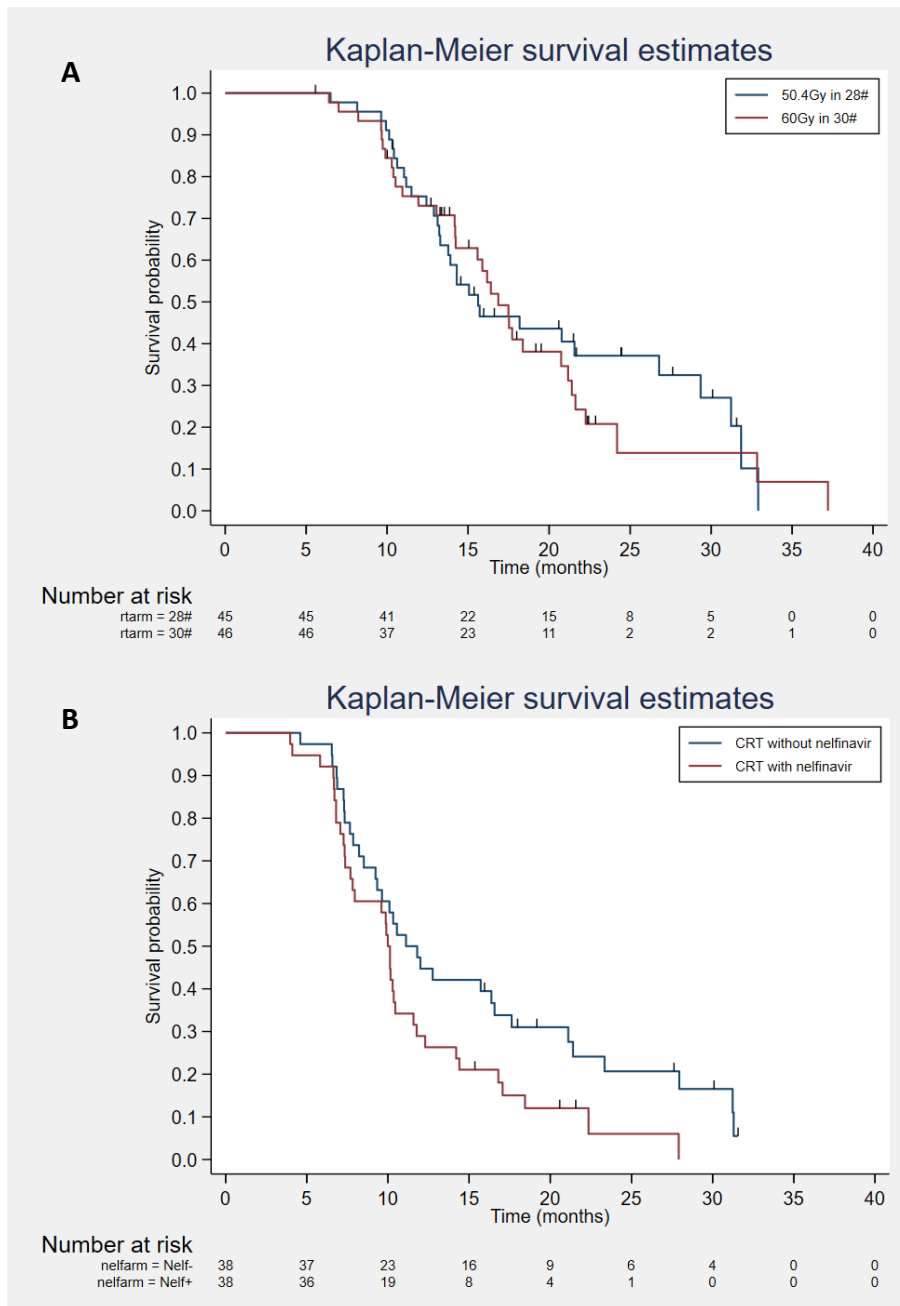


Figure 2: Kaplan Meier estimates for stage 2 patients receiving chemoradiotherapy of (A) overall survival by standard versus high dose radiation and (B) progression free survival by nelfinavir usage.

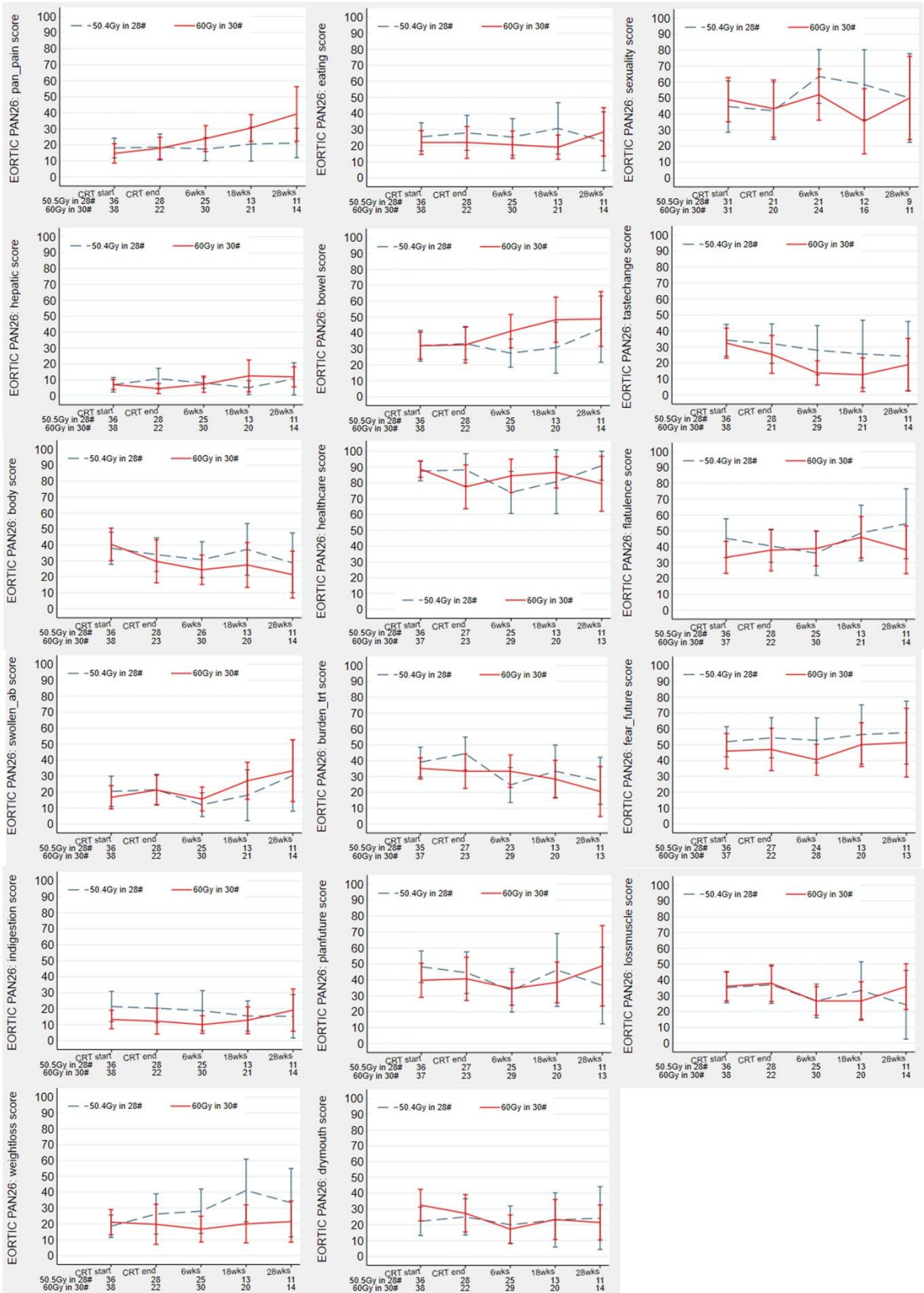


Figure 3: Mean EORTC-PAN26 score prior to, immediately, 6-, 18- and 28- weeks following standard (50.4Gy in 28 fractions) and high (60Gy in 30 fractions) dose chemoradiotherapy. Error bars indicate the 95% confidence interval.

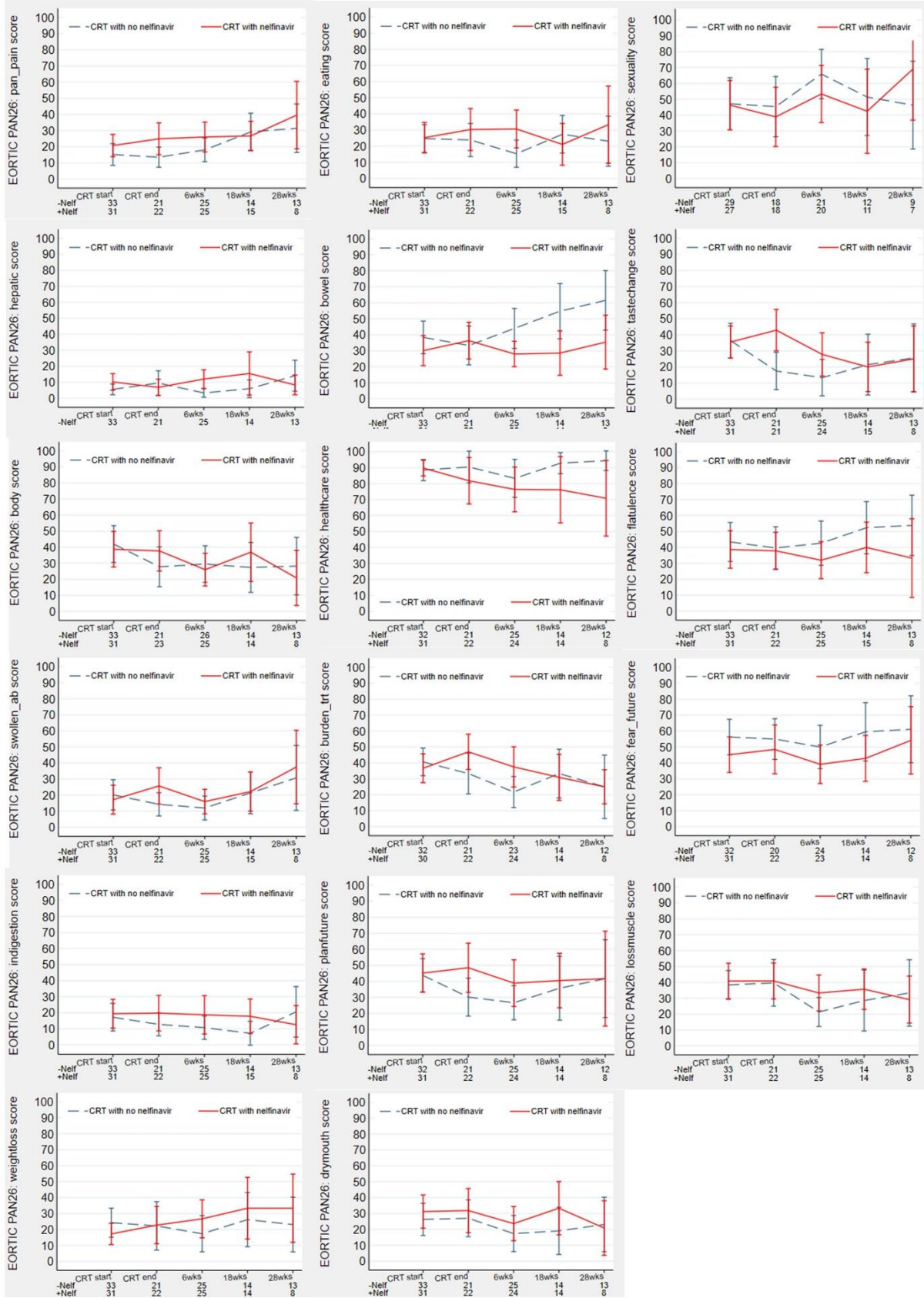


Figure 4: Mean EORTC-PAN26 score prior to, to immediately, 6-, 18- and 28- weeks following chemoradiotherapy with and without concurrent nelfinavir. Error bars indicate the 95% confidence interval