

This is an Open Access document downloaded from ORCA, Cardiff University's institutional repository:<https://orca.cardiff.ac.uk/id/eprint/177414/>

This is the author's version of a work that was submitted to / accepted for publication.

Citation for final published version:

Williams, Nefyn, Busse-Morris, Monica , Cooper, Rachael, Dodd, Susanna, Dorkenoo, Shanaz, Doungsong, Kodchawan, Green, Jessica, Edwards, Rhiannon, Hardwick, Ben, Lemmey, Andrew, Logan, Phillipa, Morrison, Val, Ralph, Penelope, Sackley, Catherine, Smith, Ben, Smith, Toby and Spencer, Llinos 2025. Effectiveness of a community-based rehabilitation programme following hip fracture: results from the Fracture in the Elderly Multidisciplinary Rehabilitation - phase III (FEMuR III) randomised. BMJ Open

Publishers page:

Please note:

Changes made as a result of publishing processes such as copy-editing, formatting and page numbers may not be reflected in this version. For the definitive version of this publication, please refer to the published source. You are advised to consult the publisher's version if you wish to cite this paper.

This version is being made available in accordance with publisher policies. See <http://orca.cf.ac.uk/policies.html> for usage policies. Copyright and moral rights for publications made available in ORCA are retained by the copyright holders.



Effectiveness of a community-based rehabilitation programme following hip fracture: results from the Fracture in the Elderly Multidisciplinary Rehabilitation - phase III (FEMuR III) randomised controlled trial

Nefyn H Williams¹

Email: Nefyn.williams@liverpool.ac.uk

Monica Busse²

Email: busseme@cardiff.ac.uk

Rachael Cooper¹

Email: Rachael.cooper@liverpool.ac.uk

Susanna Dodd¹

Email: s.r.dodd@liverpool.ac.uk

Shanaz Dorkenoo³

Email: shanaz519@btinternet.com

Kodchawan Doungsong⁴

Email: Pim.doungsong@bangor.ac.uk

Rhiannon Tudor Edwards⁴

Email: r.t.edwards@bangor.ac.uk

Jessica Green¹

Email: j.green@liverpool.ac.uk

Ben Hardwick¹

Email: ben121@liverpool.ac.uk

Andrew B Lemmey⁴

Email: a.lemmey@bangor.ac.uk

Phillipa Logan⁵

Email: pip.logan@nottingham.ac.uk

Val Morrison⁴

Email: v.morrison@bangor.ac.uk

Penelope Ralph¹

Email: p.ralph@liverpool.ac.uk

Catherine Sackley⁵

Email: catherine.sackley@nottingham.ac.uk

Ben Smith⁶

Email: benjamin.smith3@nhs.net

Toby O Smith⁷

Email: toby.o.smith@warwick.ac.uk

Llinos H Spencer⁸

Email: llinos.spencer@southwales.ac.uk

¹University of Liverpool, UK

²Cardiff University, UK

³Involving People, Cardiff, UK

⁴Bangor University, UK

⁵University of Nottingham, UK

⁶University Hospital of Derby and Burton NHS Foundation Trust

⁷University of Warwick, UK

⁸University of South Wales, UK

Corresponding author: Professor Nefyn H Williams, Department of Primary Care and Mental Health,
University of Liverpool, 1st Floor, Block B, Waterhouse Building, 1-5 Brownlow Street, Liverpool, L69
3GL, UK. Tel: +44 (0)151 795 5305 e-mail: nefyn.williams@liverpool.ac.uk

Abstract

Objective

To determine whether an enhanced community rehabilitation intervention (the FEMuR intervention) was more effective than usual NHS care, following surgical repair of hip fracture, in terms of the recovery of activities of daily living (ADL).

Design

Definitive, pragmatic, multisite, parallel-group, two-armed, superiority randomised controlled trial with 1:1 allocation ratio.

Setting

Participant recruitment in 13 hospitals across England and Wales, with the FEMuR intervention delivered in the community.

Participants

Patients aged over 60 years, with mental capacity, recovering from surgical treatment for hip fracture, and living in their own home prior to fracture.

Interventions

Usual rehabilitation care (control) was compared with usual rehabilitation care plus the FEMuR intervention, which comprised a patient-held workbook and goal-setting diary to improve self-efficacy, and six additional therapy sessions delivered in-person in the community, or remotely during COVID-19 restrictions (intervention), to increase the practice of exercise and ADL.

Primary and secondary outcome measures

Primary outcome was the Nottingham Extended Activities of Daily Living (NEADL) scale at 12 months. Secondary outcomes included: Hospital Anxiety and Depression Scale, Falls Self-Efficacy-International scale, hip pain intensity, fear of falling, grip strength and Short Physical Performance

Battery. Outcomes were collected by research assistants in participants' homes, whenever possible, but had to be collected remotely during COVID-19 restrictions.

Results

In total 205 participants were randomised (n=104 experimental; n=101 control). Trial processes were adversely affected by the COVID-19 pandemic. There were 20 deaths, 34 withdrawals and three lost to follow-up. At 52 weeks, there was no significant difference in NEADL score between the FEMuR intervention and control groups. Joint modelling analysis testing for difference in longitudinal outcome adjusted for missing values, also found no significant difference with a mean difference of 0.1 (95% CI -1.1, 1.3). There were no significant between-group differences in secondary outcomes. Sensitivity analyses, examining the impact of COVID-19 restrictions, produced similar results. A median of 4.5 extra rehabilitation sessions were delivered to the FEMuR intervention group, with a median of two sessions delivered in-person. Instrumental variable regression did not find any effect of the amount of rehabilitation on the main outcome. There were 53 unrelated serious adverse events (SAEs) including 11 deaths in the control group: 41 SAEs including nine deaths in the FEMuR intervention group.

Conclusion

The FEMuR intervention was not more effective than usual rehabilitation care. The trial was severely impacted by COVID-19. Possible reasons for lack of effect included limited intervention fidelity (fewer sessions than planned and remote delivery), lack of usual levels of support from health professionals and families, and change in recovery beliefs and behaviours during the pandemic.

Registration details

ISRCTN28376407 registered on 23/11/2018.

Keywords: pragmatic clinical trial, activities of daily living, surgery, hip fractures, community health service, rehabilitation, orthopaedic procedure

Article Summary

Strengths and limitations of this study

- This FEMuR III randomised controlled trial was developed from previous FEMuR research, which followed the MRC framework for co-developing an enhanced rehabilitation intervention and testing the feasibility of trial methods.
- Recruitment and follow-up assessments were adversely affected by the COVID-19 pandemic.
- In-person delivery of rehabilitation was not possible during COVID-19 lockdown, but rehabilitation delivery continued using remote methods.
- Intervention fidelity was affected by the COVID-19 pandemic, with the intervention group receiving fewer additional therapy sessions than planned.

BACKGROUND

Hip fracture (proximal femoral) is a common, major health problem in old age, affecting 72,160 people in England, Wales and Northern Ireland in 2022 [1]. It is expected to increase as the population ages [2]. Mortality is high, with 28% dying within the first 12 months post-fracture [3]. Survivors experience worse mobility, less independence, worse quality of life and higher rates of institutionalisation compared with age-matched controls [4]. Hip fractures cost the UK NHS more than £2 billion a year, with most costs occurring outside of the acute hospital setting [5].

The National Institute of Health and Clinical Excellence (NICE) recommend the provision of a co-ordinated multidisciplinary hip fracture programme including early identification of individual goals for multidisciplinary rehabilitation to recover mobility and independence, and efforts to facilitate return to pre-fracture residence and long-term wellbeing [6]. Research recommendations from NICE guidance include a randomised controlled trial (RCT) to test the effectiveness and cost-effectiveness of additional physiotherapy or occupational therapy after hip fracture.

We aimed to address this research priority, following the Medical Research Council (MRC) framework for developing and evaluating complex interventions [7]. In the first phase, we co-developed the FEMuR (Fracture in the Elderly Multidisciplinary Rehabilitation) intervention [8]. This was designed to enhance usual rehabilitation care in the community using a patient-held workbook and goal-setting diary, alongside six additional therapy sessions delivered in patients' homes by physiotherapists or occupational therapists (logic model published previously [9]). The second phase was a randomised feasibility study testing trial methods [9-11]. Finally, the third phase, a definitive, pragmatic RCT is described in this publication.

Aims and objectives:

To assess the effectiveness of the FEMuR intervention for patients after hip fracture compared with usual rehabilitation care.

Specific objectives were:

Primary objective

To determine the effectiveness of the FEMuR intervention following surgical repair of hip fracture in older people compared with usual care, in terms of the performance of activities of daily living (ADLs) at 52 weeks' follow-up.

Secondary objectives

1. To determine the effectiveness of the FEMuR intervention following surgical repair of hip fracture in older people compared with usual care, in terms of the performance of ADLs at 17 weeks' follow-up.
2. To determine the effectiveness of the FEMuR intervention following surgical repair of hip fracture in older people compared with usual care, in terms of anxiety and depression at 17 and 52 weeks' follow-up.
3. To assess whether the FEMuR intervention created change in fear of falling, self-efficacy, physical function, hip pain and cognitive function as potential mediators for improving ADLs at 17 and 52 weeks' follow-up.
4. To assess whether the FEMuR intervention created change in strain, anxiety and depression in carers at 17 and 52 weeks' follow-up.

METHODS

This was a pragmatic, multisite, parallel-group, two-armed, superiority RCT with 1:1 allocation ratio recruiting participants between August 2019 and May 2022. Outcome assessment was administered by blinded researchers; patient- and carer-participants and clinicians were unblinded. A concurrent economic evaluation and an embedded process evaluation will be reported elsewhere. The trial protocol has been reported previously [12]. Patient-participants were recruited whilst recovering from surgical treatment for hip fracture in 13 sites in Nottinghamshire, Norfolk, North Wales, South Wales, Kent, Derbyshire, Cheshire and Lincolnshire. They provided written informed consent to participate.

Trial population

Inclusion criteria patient participants

1. Age 60 years or older.
2. Recent hip fracture (proximal femoral).
3. Surgical repair by total hip arthroplasty, hemiarthroplasty or internal fixation.
4. Living in their own home prior to hip fracture.
5. Living and receiving rehabilitation from the NHS in the area covered by the trial sites.

Exclusion criteria patient participants

1. Living in residential or nursing homes prior to hip fracture.
2. Unable to understand English.
3. Lacking mental capacity to give informed consent.

Carer participants

We also recruited carers who were relatives or friends who provided help with ADLs on at least four days a week. Carer-participants provided written informed consent to complete outcome measures, but did not receive any trial intervention, so did not undergo eligibility screening or randomisation.

Randomisation

Randomisation was performed by researchers conducting baseline assessments, using secure web access to the remote randomisation site at the clinical trials unit, which generated an automated email to therapists delivering the FEMuR intervention. Randomisation was stratified by site and gender with an allocation ratio of 1:1 within each stratum. The unit of randomisation was the patient-participant.

Study interventions

The FEMuR intervention was compared with usual rehabilitation care. This has been described in more detail previously [8,9,12]. Usual care consisted of multidisciplinary rehabilitation delivered by the acute hospital, community hospital and community services depending on patient-participants' needs at different times during their recovery and on local service provision. The control group received usual rehabilitation care; the intervention group received usual care plus the FEMuR intervention, which aimed to enhance usual rehabilitation by increasing self-efficacy and the amount, and quality of practice, of physical exercise and ADLs [8,12]. These were enhanced using a patient-held 'Hip Fracture Rehabilitation Workbook' and 'Rehabilitation Goal Setting Diary', provided after discharge from the acute hospital, and six additional therapy sessions in the patient-participant's home. These were delivered post-discharge, in-person, by physiotherapists or occupational therapists, (including therapy assistants under their supervision) experienced in delivering rehabilitation in a community environment. In most sites, these extra sessions were delivered

concurrently with usual rehabilitation, where it existed, but in one site the additional therapy was delivered after usual care had finished. FEMuR intervention training was delivered to these therapists, regarding the use of the workbook and diary and tailoring the extra therapy sessions to patient-participants' needs, abilities, preferences and usual rehabilitation services on offer. Therapists were asked to use their own judgement as to how the extra therapy sessions should be tailored, and in addition to setting goals, and monitoring progress towards those goals, included activities such as mobility and transfers, exercises, ADLs, use of assistive devices, leisure activities, emotional wellbeing and family involvement. Remote meetings with the FEMuR III trial team (including the chief investigator and therapist co-investigator examining the fidelity of the FEMuR intervention) and online forums were established to support the therapists delivering the FEMuR intervention, to answer their queries and to maintain fidelity. During the COVID-19 pandemic the delivery of most of the extra therapy sessions, in the FEMuR intervention group, moved to remote delivery because of the lockdown restrictions.

Outcomes

Patient-participants completed outcome measures at baseline, 17 and 52 weeks post-randomisation, administered in their homes, by a research assistant blinded to group allocation (Tables 1 and 2). The primary outcome was the Nottingham Extended Activities of Daily Living (NEADL) scale [13, 14] at 52-week follow-up. At baseline, the patient-participant was asked to recall the four weeks prior to hip fracture and not the four weeks prior to completing the questionnaire. Secondary outcomes included the NEADL at 17 weeks, the Hospital Anxiety and Depression Scale (HADS) [15] at 17 and 52 weeks, and potential mediators of outcome at 17 and 52 weeks: Visual Analogue Scale (VAS) for hip pain intensity, [16] Falls Efficacy Scale-International (self-efficacy) [17, 18] and VAS-Fear of Falling (VASFoF) [19]. EuroQol (EQ-5D-3L) [20] and the Client Service Receipt Inventory (CSRI) [21] were also

collected as part of a concurrent economic evaluation, which will be reported elsewhere. The research assistant assessed patient-participants' cognitive function using the Abbreviated Mental Test Score (AMTS) [22], grip strength [23-25] at each time point, and the Short Physical Performance Battery (SPPB) [26, 27] at 17 and 52 weeks. Carer-participants completed the Caregiver Strain Index [28] and HADS [15] at each time point. During the COVID-19 pandemic follow-up assessments had to be performed remotely because of the lockdown restrictions. Qualitative interviews of trial participants and therapists were collected, along with data from therapists' records, as part of a concurrent process evaluation, which will be reported elsewhere.

Sample size

Based on the analysis of covariance (ANCOVA) with alpha of 5% and 90% power to detect a minimal clinically important difference on the NEADL scale of 2.4 [29], standard deviation (SD)=10 [30], R^2 of covariate=0.52) with 79% retention rate, based on the feasibility study data [10], 446 patient-participants needed to be recruited.

Statistical analysis

Primary and secondary outcomes at baseline, 17 and 52 week follow-up were summarised for each treatment group using descriptive statistics. If outcomes were normally distributed, the difference between-group means (with 95% Confidence Intervals (CI)) were reported from the repeated measures ANCOVA (accounting for 17 and 52 week outcomes) adjusted for baseline score and stratification factors (site and gender). Non-normally distributed outcomes were transformed and analysed as difference from baseline to ensure normality, using repeated measures ANCOVA adjusted for stratification factors. Predictors of missing data were investigated using regression models. A sensitivity analysis using a joint modelling approach was adopted to assess for any

differences in longitudinal outcome between the randomised arms, adjusted for dropouts or missing values [12]. Additional sensitivity analyses were performed excluding patient-participants who became unblinded to assessors (when the percentage of such patient-participants exceeded 5%), adjusting for those patient-participants who had any assessments during the COVID-19 pandemic, and accounting for the impact of COVID-19 restrictions on the ability for patient-participants to undertake usual ADLs. This last analysis was in relation to items in the NEADL which were not applicable during COVID-19 restrictions. This spanned seven categories such as travelling on public transport and going out socially. The remaining 15 results were summed and multiplied by 22/15, to make the shortened scale comparable to the longer NEADL scale.

The impact of engagement with the FEMuR intervention was assessed using instrumental variable regression, using the number of direct rehabilitation sessions and total time spent in direct rehabilitation sessions [12]. Usual rehabilitation data were collected from a therapy session record completed by patient-participants and extra rehabilitation records for the FEMuR intervention completed by therapists. Missing data were supplemented by data collected by the CSRI [21], at the 17 and 52 week follow-up assessments.

Mediation analysis examined the hypothesised mechanism of change for the FEMuR intervention in terms of self-efficacy, hip pain, cognitive function, fear of falling and physical function, conditional on the overall intervention effect being significant. Each mediator was summarised using means (SD) in each treatment group and, if change from baseline was normally distributed, change from baseline ANCOVA was used to compare between the treatment groups (or if non-normal, summarised using median and interquartile range (IQR) and analysed using Mann-Whitney test).

Fidelity assessment

In addition to the number of rehabilitation sessions delivered, and their mode of delivery, FEMuR intervention fidelity was assessed as part of an embedded mixed methods' process evaluation [12]. The results of this will be published elsewhere.

Patient and Public Involvement (PPI)

There has been PPI at all stages including refining the research question, co-designing the FEMuR intervention, choosing outcomes relevant to patients, commenting on patient-facing materials, the burden of the FEMuR intervention and of trial participation. A PPI co-investigator was an active member of the trial management group contributing to all aspects of trial conduct and dissemination.

RESULTS

Trial recruitment in the COVID-19 pandemic

Recruitment to the trial was adversely affected by the COVID-19 pandemic. This led to the funder halting recruitment after 205 patient-participants had been recruited, because of low recruitment rate.

Baseline

Between June 2019 and May 2022, 3585 patients with proximal femoral fracture were screened for eligibility, and 1460 (41%) were eligible (Figure 1). There were 2125 ineligible, and the main reasons were not living in an area covered by the trial (823, 39%), lack of mental capacity (627, 30%) and living in residential or nursing homes prior to the fracture (447, 21%). Out of those eligible, 715 (49%) were invited to participate, 216 consented to participate and 205 (14% of the eligible population, or

29% of those invited) were randomised. The main reason for not being approached was lack of hospital capacity (162, 22%), patients being too ill to participate (139, 19%) and discharged home (126, 17%). The main reason for declining consent was unwillingness to participate in a trial (304, 62%). From the recruited pool of patient-participants, 14 of their carers agreed to participate (7%).

The profiles of the intervention and control groups were broadly similar with respect to age, gender, ethnicity, place of residence prior to admission, educational attainment, AMTS and important co-morbid conditions (Table 1). The baseline scores of the outcome measures were similar between the two groups, however grip strength was a mean of 1.6 kg greater in the control group (Table 2).

Delivery of rehabilitation sessions in the COVID-19 pandemic

The COVID-19 pandemic also affected intervention delivery (protocol amendments detailed in Supplemental Table 1). Therapy records were collected for 64 patient-participants in the FEMuR intervention group. Only 28 (44%) received the planned six extra rehabilitation sessions, with three (5%) not receiving any extra sessions. The median number of extra rehabilitation sessions delivered was 4.5 (IQR: 4). The pandemic also affected the mode of delivery as most therapy sessions were switched to remote deliver by telephone. Only 17 (27%) received all six extra rehabilitation sessions in person, with no in-person contact for 21 (33%). The median number of in-person rehabilitation sessions was two (IQR: 6). The extra rehabilitation sessions were delivered evenly between physiotherapists and occupational therapists (50% each). The usual rehabilitation care received by both groups was very variable, with a large range and skewed distribution. The total number of rehabilitation sessions, combining usual rehabilitation sessions with the extra rehabilitation sessions in the intervention group (in-person or remote), was a median of six (IQR: 3) in the intervention group and three (IQR: 4) in the control group.

Follow-up assessments

Two patient-participants were ineligible after randomisation (one from each group). There were 20 deaths (11 control, 9 intervention), 34 withdrew consent from further follow-up (16 control, 18 intervention) and three were lost to follow-up (1 control, 2 intervention) (Figure 1). During COVID-19 lockdown restrictions, in-person follow-up visits were not permitted; outcomes were therefore collected remotely. Remote follow-up assessments were carried out on 108 participants at 17 week follow-up and 104 participants at 52 week follow-up, which were 67.5% and 83.2% of those included in the statistical analyses (Supplemental Table 2). This meant it was not possible to perform grip strength or SPPB tests, or to record VAS assessments. One carer-participant in the intervention group withdrew consent for further follow-up for unknown reason, and one carer-participant withdrew in the control group because their patient-participant had died.

Primary outcome

Baseline measurements of the NEADL scale (primary outcome measure) represented patient-participants' recall of their activity levels prior to admission following their hip fracture. Follow-up NEADL scores were lower in both groups, and neither group retained their pre-fracture levels of functioning. At 52 weeks, there was no significant difference between the FEMuR intervention and control groups with adjusted mean difference of -1.9 (95% CI -3.7 to -0.1). The overall repeated measures ANCOVA p-value, accounting for both the 17- and 52-week timepoints, was not statistically significant ($p=0.084$) (Table 2).

Secondary outcomes

There were no significant differences in any of the secondary outcome measures between the groups (Table 2). Baseline measurement of HADS were not high, and there were no significant differences at either follow-up point. Physical function, as measured by the SPPB, was only measured in 75 (17 weeks) and 43 (52 weeks) patient-participants. Results of the SPPB were low in both groups, indicating poor balance, limited gait speed and inability to rise from a chair unaided. Outcomes were collected from only 12 carer-participants at 17 week follow-up and eight carer-participants at 52 weeks (Supplemental Table 3). The number of outcomes collected were too few to make meaningful comparisons.

Sensitivity analyses

Adjusting for the impact of COVID-19 restrictions on patient-participants' freedom to carry out daily activities (such as socialising and using public transport), using a change from baseline ANCOVA model, found a mean difference in NEADL of -2.0 (95% CI -3.8, -0.2) in favour of the control group by 52 weeks ($p=0.07$ for overall effect accounting for 17- and 52-week measures). Adjusting according to whether patient-participants had any assessments during the COVID-19 pandemic, using a change from baseline ANCOVA, found a mean difference in NEADL of -1.9 (95% CI -3.7, -0.1) in favour of the control group by 52 weeks ($p = 0.09$). Sensitivity analysis, excluding patient participants who became unblinded to assessors, was not required because only 4.9% of follow-up assessments were unblinded.

Missing data analyses

Change from baseline ANCOVA models were used to determine predictors of NEADL score at 52 weeks, including type of surgery, age, living arrangements and co-morbidity. Age was a statistically significant predictor with a co-efficient -0.1 (95% CI -0.2, 0; $p = 0.04$) (Supplemental Table 4).

Logistic regression was used to determine predictors of missing outcome, but none were statistically significant (Supplemental Table 5). A further sensitivity analysis, using a repeated measures ANCOVA model adjusted for age, found a mean difference in NEADL of -2.1 (95% CI -3.8, -0.3; $p=0.05$) in favour of the control group. Similar change from baseline ANCOVA models were used to determine predictors of HADS anxiety and HADS depression scores at 52 weeks. Living alone was a statistically significant predictor for HADS anxiety with co-efficient -1.8 (95% CI -3.4, -0.1; $p = 0.04$). There were no statistically significant predictors of missing outcomes (determined using logistic regression). A further sensitivity analysis, using a repeated measures ANCOVA model adjusted for living alone found no statistically significant difference with a mean difference in HADS anxiety score of -0.2 (95% CI -1.9, 1.5) in favour of the FEMuR intervention group at 52 weeks ($p = 0.69$ accounting for both 17- and 52-week time-points).

Joint modelling analysis

A joint modelling analysis for the primary outcome NEADL, testing for difference in longitudinal outcome between the randomised arms accounting for dropouts and missingness, found no statistically significant difference between the groups with NEADL 0.1 (95% CI -1.1, 1.3) in favour of the FEMuR intervention group (Table 3). Similar joint modelling analyses for HADS found no statistically significant difference between the groups, with HADS anxiety scale -0.5 (95% CI -1.1, 0.1) and HADS depression scale -0.4 (95% CI -0.9, 0.007) in favour of the FEMuR intervention group (Table 3).

Instrumental variable regression

The number of direct rehabilitation sessions, including usual rehabilitation in both groups and the extra rehabilitation sessions in the FEMuR intervention group, and the total time spent in direct rehabilitation sessions were used as two different potential instruments to facilitate instrumental variable analysis. The causal impact of receiving the intervention, as opposed to the intention-to-treat effect of randomised allocation provided by the repeated measures ANCOVA, was to be determined. However, randomisation was not a strong instrument, and the instrument effects were not significant in either case ($p=0.62$ for number of rehabilitation sessions and $p=0.08$ for total time spent in rehabilitation sessions). When these analyses were repeated for in-person direct sessions only, without remote telephone sessions, randomisation was not a strong instrument either ($p=0.82$ for number of rehabilitation sessions and $p=0.18$ for total time spent in rehabilitation sessions).

Mediation analysis

Due to the non-significant overall effect of the FEMuR intervention, causal mediation analysis was not carried out (as treatment effect is a condition of mediation analysis). Most of the mediators were non-normally distributed and therefore summarised and analysed using non-parametric methods (Supplemental Table 6).

Unintended consequences

There were 94 serious adverse events (SAEs), including 20 deaths. In the control group, 30 patient-participants reported 53 SAEs; in the FEMuR intervention group, 33 patient-participants reported 41 SAEs. None were related to the intervention. There were 23 further falls requiring hospitalisation (11 control group, 12 intervention group), 22 fractures, including seven hip fractures (4 control group, 3 intervention group). In addition, there were 123 non-serious adverse events (AE). In the control

group, 28 patient-participants reported 74 AEs; in the FEMuR intervention group, 25 patient-participants reported 49 AEs.

DISCUSSION

Summary of main findings

Recruitment and retention in the trial were adversely affected by the COVID-19 pandemic. This reduced the power of the statistical analysis. At 52 weeks there was no significant difference in NEADL score between the FEMuR intervention and control groups. There were also no significant changes in the HADS or the potential mediators (self-efficacy, hip pain intensity, fear of falling, grip strength and SPPB). Sensitivity analyses examining the impact of COVID-19 restrictions produced similar results. The median number of extra rehabilitation sessions delivered to the FEMuR intervention group was 4.5, and only a median of two were delivered in-person, which has important implications for intervention fidelity.

Strengths and weaknesses

This definitive RCT followed previous work co-developing the FEMuR intervention and assessing the feasibility of trial methods, according to the MRC framework for developing and evaluating complex interventions [7]. However, this feasibility work could not foresee the impact of the COVID-19 pandemic on research project delivery, including the withdrawal of in-person visits by therapists to patient-participants' homes. We did not manage to recruit any patient-participants from ethnic minorities, despite recruiting in areas with large ethnic minority populations. There was active PPI throughout all stages of the RCT.

We were unable to recruit the number of patient-participants indicated by our sample size calculation due to COVID-19 restrictions. The primary statistical analysis was therefore underpowered, with the subsequent potential for both type I and II errors. There were also 20 deaths, 34 withdrawals of consent and three lost to follow-up, which reduced statistical power further. We know from our previous feasibility study [10] that compared with the total population who fracture their hip, we would recruit a younger sample with fewer complications. The patient-participants were a motivated group who were happy to participate in research projects and in rehabilitation programmes. This might have meant that those in the control group were motivated to recover their ADLs using their own resources. Lockdown restrictions imposed during the COVID-19 pandemic restricted in-person delivery of the FEMuR intervention, but we were able to continue delivering the intervention remotely. Instead of the planned six additional therapy sessions, patient-participants in the FEMuR intervention group received a median of 4.5 sessions, with only a median of two being in-person. Follow-up visits to patient-participants' homes were also restricted. However, we were able to continue follow-up assessments remotely, but recording of VAS, measurement of grip strength and physical function assessment using the SPPB was not possible, which limited the assessment of potential mediators. We were unable to recruit many carer-participants, because of visiting restrictions in hospitals during the COVID-19 pandemic. We asked participants in both groups to complete diaries of usual rehabilitation care in the community, but did not collect data on the frequency and duration of rehabilitation therapy during the hospital stay.

Comparison with previous literature

Other studies have found that health status and quality of life improved in most patients in the first six months after hip fracture but did not return to pre-fracture levels [31]. In contrast to the findings from this RCT, other studies have found that extended exercise rehabilitation programmes offered

beyond the regular rehabilitation period improved physical functional outcomes [32]. These programmes were more intensive than the FEMuR intervention with home-based in-person programmes lasting up to 12 months, offering up to 56 daily home visits. A systematic review of patient perspectives of recovery after hip fracture found that full recovery was a return to pre-fracture activities enabling independence [33]. Participants felt vulnerable because of anxieties about fear of falling, ability to cope at home, going out in the community and attending social events, all of which would have been made more difficult by the COVID-19 lockdown. However, our sensitivity analyses adjusting for the effect of COVID-19 restrictions on the performance of ADLs, and follow-up assessment during the pandemic, did not alter the findings. In the review, recovery was driven by a positive outlook and active engagement in the recovery process, which relied upon realistic expectations and goals tailored to individual needs and activities [33]. Finally, patient-participants were reliant on both professional and social support [33], which was lacking during the pandemic. Our findings did not add any support to the limited evidence for the role of self-efficacy on recovery following hip fracture [34].

Implications for practice, policy and research

The FEMuR intervention was not delivered as intended because of the COVID-19 pandemic lockdown restrictions. The intervention had to rely on remote methods of delivery, and the number of extra rehabilitation sessions delivered was fewer than planned. This lack of fidelity to the FEMuR intervention developed in the feasibility study [10] may explain its lack of effectiveness in this RCT. There remains much to learn about how to deliver remote rehabilitation with fidelity, and it may not be possible to fully replace face-to-face interactions between clinicians and patients. We can speculate that in-person delivery of the planned six therapy sessions would have been more effective by facilitating an improvement in self-efficacy, the practice of ADLs and exercise, with greater

professional and social support from friends and family. An embedded mixed methods process evaluation has examined intervention delivery in more detail and will be reported elsewhere. Likewise, an economic evaluation of the FEMuR intervention will be reported elsewhere.

Conclusions

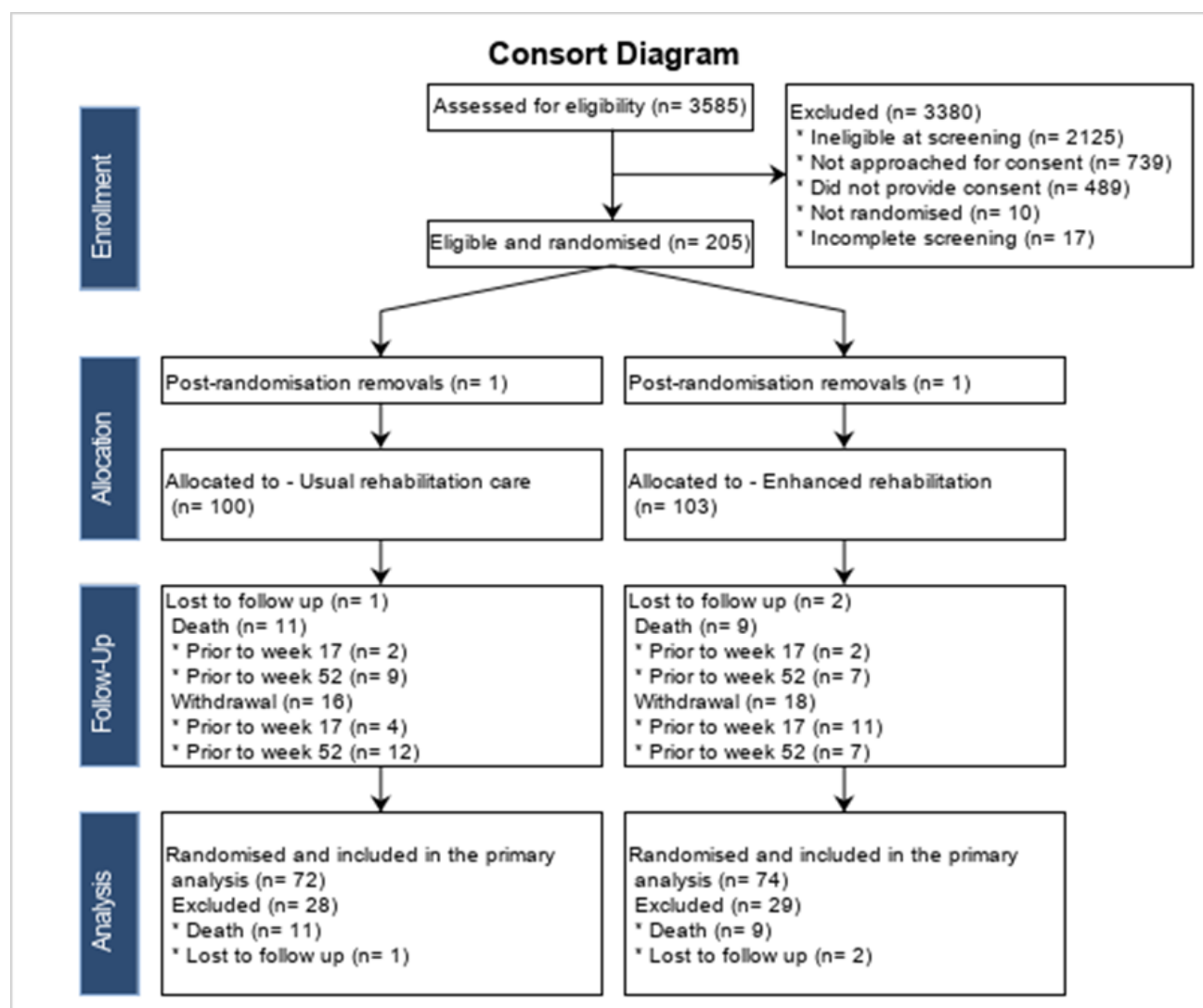
The FEMuR intervention was not effective in improving the performance of ADLs in older people recovering from surgical repair of hip fracture compared with usual care. However, trial recruitment, delivery of the enhanced rehabilitation, and follow-up were greatly affected by the COVID-19 pandemic, which may explain the lack of effectiveness.

Table 1 Baseline characteristics of patient participants in the FEMuR III trial

Table 2 Outcome measures for patient participants in the FEMuR III trial

Table 3 Longitudinal analyses for the FEMuR III trial

Figure 1 CONSORT Flow Diagram for the FEMuR III trial



Supplemental Table 1	Summary of protocol amendments approved by sponsor, funder and research ethics committee
Supplemental Table 2	Location of follow-up data collection
Supplemental Table 3	Outcome measures for carer participants in the FEMuR III trial
Supplemental Table 4	Predictors of change from baseline at 52 weeks outcome data using ANCOVA models
Supplemental Table 5	Predictors of missing change from baseline to week 52 outcome data using logistic regression models
Supplemental Table 6	Potential mediators of treatment effect

Acknowledgements

The FEMuR III team would like to thank all participants who took part in the study. The authors would also like to thank the North West Coast Clinical Research Network (CRN), other CRNs and Health and Care Research Wales for supporting participant recruitment. We would like to thank the healthcare staff at in all sites who identified potential participants and delivered the intervention in: Leighton Hospital in Cheshire, Lincoln County Hospital, Norfolk Community and Health Care Trust, Nottingham City Care Partnership, Prince Charles Hospital and Royal Glamorgan Hospital in Cwm Taf University Health Board, Queen Elizabeth The Queen Mother Hospital and William Harvey Hospital in East Kent, Royal Derby Hospital, University Hospital of Wales in Cardiff and Vale University Health Board, Wrexham Maelor Hospital, Ysbyty Glan Clwyd and Ysbyty Gwynedd in Betsi Cadwaladr University Health Board. Special thanks to Liverpool Clinical Trials Centre staff: Trial co-ordinators (Lola Howard, Sophie Hennessey, Claire Soady, Farhiya Ashoor, Helen Dunn), data management, information systems and quality assurance teams. We very much appreciate the work of the Trial Steering and

Independent Data Monitoring Committees Gail Mountain (chair), Chris Robertson (chair), Diane Dixon, Peter Giannoudis, Barbara Hanratty, Graeme Holt, Helen Hughes, George Kernohan, Tosan Okoro, Nikki Totton.

Author contributions

NHW was the chief investigator and grant holder, was responsible for study design, conduct and analysis and had overall responsibility for the study and acts as guarantor. SDod oversaw the statistical analysis for the trial. RC, JG performed the statistical analysis, BH was the senior trial co-ordinator, PL was lead applicant from University of Nottingham and oversaw sites in Nottingham. MB was lead applicant from Cardiff University and oversaw sites in South Wales, CS was lead applicant from Kings College London and now University of Nottingham and oversaw sites in Kent. TOS was lead applicant from the University of East Anglia and oversaw the site in East Anglia. BS oversaw the site in Derby. VM provided health psychology interpretation and methodological oversight throughout the study. ABL provided exercise physiology expertise. PR led the process evaluation. RTE oversaw the economic analysis. KD and LHS performed the economic analysis. SDor provided patient and public involvement and engagement. All authors were involved in drafting, revising and approving this manuscript.

Funding

This work was supported by the National Institute for Health and Care Research's Health Technology Assessment Programme, grant number 16/167/09.

Disclaimer

The views and opinions expressed therein are those of the authors and do not necessarily reflect those of the HTA, NIHR, NHS or the Department of Health.

Data sharing statement

Research data will be available for secondary analysis on reasonable request to the corresponding author.

Competing interests

NHW is deputy chair of NIHR HTA funding committee (commissioned research). All other authors have no competing interests to declare.

Patient consent for publication

Not required

Ethics approval

NHS research ethics approval was obtained from North East—Tyne & Wear South Research Ethics Committee, reference 18/NE/0300.

References

1. Royal College of Physicians. 15 years of quality improvement: the 2023 National Hip Fracture Database report on 2022. <https://www.nhfd.co.uk/2023report> Accessed 28 June 2024.
2. Baker PN, Salar O, Ollivere BJ, et al., Evolution of the hip fracture population: time to consider the future? A retrospective observational analysis. *BMJ Open*, 2014. 4(4): e004405.
3. Baji P, Patel R, Judge A, et al. Organisational factors associated with hospital costs and patient mortality in the 365 days following hip fracture in England and Wales (REDUCE): a record-linkage cohort study. *Lancet Healthy Longev* 2023; 4: e386–98.
4. Dyer S, Crotty M, Fairhall N, et al. A critical review of the long-term disability outcomes following hip fracture. *BMC Geriatrics* 2016;16(1):158.
5. Tian Y, Thompson J, Buck D, et al. Exploring the system-wide costs of falls in older people in Torbay. London: The King's Fund. 2013.
6. National Institute for Health and Care Excellence. Hip fracture: management.CG 124. <https://www.nice.org.uk/guidance/cg124/resources/hip-fracture-management-pdf-35109449902789> Accessed 28 June 2024.
7. Skivington K, Matthews L, Simpson SA, et al. A new framework for developing and evaluating complex interventions: update of Medical Research Council guidance. *BMJ* 2021; 374: n2061.
8. Roberts JL, Din NU, Williams M, et al. Development of an evidence-based complex intervention for community rehabilitation of hip fracture patients using realist review, survey and focus group. *BMJ Open* 2017; 2017;7:e014362.
9. Williams NH, Hawkes C, Din NU, et al. Fracture in the Elderly Multidisciplinary Rehabilitation (FEMuR): study protocol for a Phase II randomised feasibility study of a multidisciplinary rehabilitation package following hip fracture [ISRCTN22464643] *Pilot feasibility Studies* 2015; 1: 13.
10. Williams NH, Roberts JL, Din NU, et al Fracture in the Elderly Multidisciplinary Rehabilitation (FEMuR): a phase II randomised feasibility study of a multidisciplinary rehabilitation package following hip fracture. *BMJ Open* 2016; 6: e012422.
11. Roberts JL, Pritchard AW, Williams M, et al. Mixed methods process evaluation of an enhanced rehabilitation intervention for elderly hip fracture patients. *BMJ Open* 2018; 8:e021486.
12. Williams NH, Dodd S, Hardwick B, et al. Protocol for a definitive randomised controlled trial and economic evaluation of a community-based rehabilitation programme following hip fracture: Fracture in the Elderly Multidisciplinary Rehabilitation - Phase III (FEMuR III) [ISRCTN28376407]. *BMJ Open* 2020; 10: e039791.
13. Nouri FM, Lincoln NB. An extended activities of daily living scale for stroke patients. *Clin Rehabil* 1987;1:301–5.
14. Wu C-yi, Chuang L-ling, Lin K-chung, et al. Responsiveness, minimal detectable change, and minimal clinically important difference of the Nottingham extended activities of daily living scale in patients with improved performance after stroke rehabilitation. *Arch Phys Med Rehabil* 2011;92:1281–7.
15. Zigmond A, Snaith R. The hospital anxiety and depression scale. *Acta Psychiatr Scand* 1983;983:67.
16. Brokelman RBG, Haverkamp D, van Loon C, et al. The validation of the visual analogue scale for patient satisfaction after total hip arthroplasty. *Eur Orthop Traumatol* 2012;3:101–5.
17. Hauer K, Yardley L, Beyer N, et al. Validation of the falls efficacy scale and falls efficacy scale international in geriatric patients with and without cognitive impairment: results of self-report and Interview-Based questionnaires. *Gerontology* 2010;56:190–9.

18. Yardley L, Beyer N, Hauer K, et al. Development and initial validation of the falls efficacy Scale-International (FES-I). *Age Ageing* 2005;34:614–9.
19. Scheffer AC, Schuurmans MJ, vanDijk N, et al. Reliability and validity of the visual analogue scale for fear of falling in older persons. *J Am Geriatr Soc* 2010;58:2228–30.
20. The EuroQol Group. EuroQol-a new facility for the measurement of health-related quality of life. *Health Policy (New York)* 1990;16:199–208.
21. Database of instruments for resource use measurement. client service receipt inventory (CSRI). Available: <https://www.dirum.org/assets/downloads/634462388066137028-CSRI.pdf> [Accessed 27 Jun 2024].
22. Hodkinson HM. Evaluation of a mental test score for assessment of mental impairment in the elderly. *Age Ageing* 1972;1:233–8.
23. Giampaoli S, Ferrucci L, Cecchi F, et al. Hand-grip strength predicts incident disability in non-disabled older men. *Age Ageing* 1999;28:283–8.
24. Rantanen T, Guralnik JM, Foley D, et al. Midlife hand grip strength as a predictor of old age disability. *JAMA* 1999;281:558–60.
25. Sallinen J, Stenholm S, Rantanen T, et al. Hand-Grip strength cut points to screen older persons at risk for mobility limitation. *J Am Geriatr Soc* 2010;58:1721–6.
26. Guralnik JM, Simonsick EM, Ferrucci L, et al. A short physical performance battery assessing lower extremity function: association with self-reported disability and prediction of mortality and nursing home admission. *J Gerontol* 1994;49:M85–94.
27. Guralnik JM, Ferrucci L, Pieper CF, et al. Lower extremity function and subsequent disability: consistency across studies, predictive models, and value of gait speed alone compared with the short physical performance battery. *J Gerontol A Biol Sci Med Sci* 2000;55:M221–31.
28. Robinson BC. Validation of a caregiver strain index. *J Gerontol* 1983;38:344–8.
29. Wu C-yi, Chuang L-ling, Lin K-chung, et al. Responsiveness, minimal detectable change, and minimal clinically important difference of the Nottingham extended activities of daily living scale in patients with improved performance after stroke rehabilitation. *Arch Phys Med Rehabil* 2011;92:1281–7.
30. Parker S, Oliver P, Pennington M, et al. Rehabilitation of older patients: day hospital compared with rehabilitation at home. A randomised controlled trial. *Health Technol Assess* 2009;13.
31. Peeters CMM, Visser E, Van de Ree CLP, et al. Quality of life after hip fracture in the elderly: A systematic literature review. *Injury, Int. J. Care Injured* 2016; 47: 1369–1382.
32. Auais MA, Eilayyan O, Mayo NE. Extended Exercise Rehabilitation After Hip Fracture Improves Patients' Physical Function: A Systematic Review and Meta-Analysis. *Physical Therapy* 2012;92:1437-51.
33. Beer N, Riffat A, Volkmer B, et al. Patient perspectives of recovery after hip fracture: a systematic review and qualitative synthesis. *Disability and Rehabilitation* 2022; 44: 6194-6209.
34. Sheehan K, Fitzgerald L, Lambe K, et al. Effectiveness of community-based rehabilitation interventions incorporating outdoor mobility on ambulatory ability and falls-related self-efficacy after hip fracture: a systematic review and meta-analysis. *Arch Osteoporosis* 2021; 16: 99.

Table 1 Baseline characteristics of patient participants in the FEMuR III trial

Baseline characteristics		Usual rehabilitation (n=100)	FEMuR intervention (n=103)
Age (years)	mean (SD) range	80.9 (8.0) 61-100	81.2 (8.0) 60-95
Abbreviated Mental Test Score	mean (SD) range	9.5 (0.8) 5-10	9.4 (0.9) 6-10
Gender n (%)	Female	68 (68%)	71 (69%)
Ethnicity n (%)	White (UK)	98 (98%)	101 (98%)
	American	1 (1%)	0 (0%)
	European	0 (0%)	1 (1%)
	White Canadian	0 (0%)	1 (1%)
	Missing	1 (1%)	0 (0%)
Fracture type n (%)	Intracapsular	60 (60%)	56 (54%)
	Extracapsular	31 (31%)	35 (34%)
	Missing	9 (9%)	12 (12%)
Surgery type n (%)	Total hip replacement	16 (16%)	9 (9%)
	Hemi-arthroplasty	31 (31%)	44 (43%)
	Internal fixation	29 (29%)	32 (31%)
	Intra-medullary nailing	20 (20%)	13 (13%)
	Missing	4 (4%)	5 (5%)
Living arrangements n (%)	Living alone	52 (52%)	49 (48%)
Place of residence before admission n (%)	Owner occupied	87 (87%)	89 (86%)
	Housing association/local authority property	8 (8%)	8 (8%)
	Private rental	5 (5%)	5 (5%)
	Missing	0 (0%)	1 (1%)
Hospital admission length (days)	mean (SD)	8.7 (8.5)	13.6 (20.1)
Discharged directly to usual residence n (%)	Yes	66 (66%)	67 (65%)
	Missing	1 (1%)	1 (1%)
Place of discharge from acute hospital n (%)	Owner occupied/private rental	74 (74%)	82 (80%)
	Housing association/local authority property	8 (8%)	5 (5%)
	Sheltered accommodation	0 (0%)	1 (1%)
	Residential care home	7 (7%)	5 (5%)
	Nursing home	2 (2%)	0 (0%)
	Community hospital	8 (8%)	8 (8%)
	Missing	1 (1%)	2 (2%)
Highest educational qualification n (%)	None	24 (24%)	26 (25%)
	GCSE or equivalent	28 (28%)	21 (20%)
	A-level or equivalent	18 (18%)	21 (20%)
	Degree	8 (8%)	6 (6%)
	Higher degree	3 (3%)	5 (5%)
	Missing	19 (19%)	24 (23%)
Deprivation decile (from postcode) n (%)	1 (most deprived)	13 (13%)	4 (4%)
	2	10 (10%)	10 (10%)
	3	5 (5%)	3 (3%)
	4	7 (7%)	10 (10%)
	5	11 (11%)	11 (11%)
	6	11 (11%)	17 (17%)
	7	8 (8%)	10 (10%)
	8	8 (8%)	10 (10%)
	9	12 (12%)	9 (9%)
	10 (least deprived)	13 (3%)	14 (14%)
	Missing	2 (2%)	5 (5%)

Table 2 Outcome measures for patient participants in the FEMuR III trial

Outcome measures (range of possible values)	Baseline		17 weeks' follow-up		52 weeks' follow-up		Adjusted mean difference between groups (95% CI)
	Usual rehabilitation mean (SD)	FEMuR Intervention mean (SD)	Usual rehabilitation mean (SD)	FEMuR Intervention mean (SD)	Usual rehabilitation mean (SD)	FEMuR Intervention mean (SD)	
Primary Outcome measureF							
Nottingham Extended Activities of Daily Living Scale (0-66)	16.0 (5.2) n=99	16.7 (4.8) n=103	13.0 (6.1) n=83	12.9 (5.7) n=77	15.0 (5.3) n=60	13.7 (6.4) n=66	-1.9 (-3.7, -0.1)* F=3.04 p=0.0840
Secondary Outcome measures							
Hospital Anxiety and Depression Scale - Anxiety (0-21)	5.7 (4.2) n=96	5.6 (4.0) n=102	4.8 (3.5) n=82	4.2 (3.6) n=77	5.1 (4.4) n=57	4.3 (3.6) n=62	0 (-1.8, 1.7)* F= 0.06 p=0.8508
Hospital Anxiety and Depression Scale - Depression (0-21)	5.9 (3.6) n=96	5.6 (3.5) n=102	5.6 (3.6) n=82	4.6 (3.1) n=77	5.2 (3.7) n=57	4.8 (3.3) n=62	-0.4 (-1.8, 0.9)* F=2.55 p=0.1135
Falls Self-Efficacy International Scale (16-64)	40.3 (12.1) n=92	39.2 (13.4) n=99	35.1 (12.9) n=77	33.0 (12.3) n=74	35.0 (13.4) n=57	32.9 (13.1) n=59	0.9 (-4.7, 6.5)* F=0.06 p=0.8032
Hip Pain Intensity – Visual Analogue Scale (0-10)	5.2 (3.0) n=81	4.8 (2.7) n=84	3.0 (3.0) n=41	3.0 (3.2) n=35	4.0 (3.7) n=35	2.9 (3.8) n=34	1.1 (-2.3, 4.4)* F=0.77 p=0.3865
Fear of Falling – Visual Analogue Scale (0-10)	5.4 (3.0) n=82	5.1 (3.0) n=83	5.8 (3.4) n=44	5.4 (3.4) n=40	6.4 (3.3) n=37	5.2 (3.5) n=36	0 (-2.6, 2.6)* F=0.00 p=0.9468
Abbreviated Mental Test Score (0-10)	9.5 (0.8) n=96	9.4 (0.9) n=102	9.2 (1.7) n=81	9.3 (0.9) n=74	9.5 (0.8) n=57	9.1 (2.1) n=61	ANCOVA model not fitted
			Mann-Whitney test p=0.6782		Mann-Whitney test p=0.5916		
Grip strength in kg	19.8 (8.9) n=70	18.2 (7.3) n=74	16.5 (6.8) n=18	18.9 (7.9) n=19	18.4 (7.4) n=8	13.6 (8.0) n=11	-1.2 (-8.1, 5.7)* F=0.36 p=0.5722
Short Physical Performance Battery (0-12)	Not performed	Not performed	1.6 (2.8) n=41	2.9 (3.6) n=34	1.8 (3.4) n=22	2.8 (4.0) n=21	ANCOVA model not fitted
			Mann-Whitney test p=0.0946		Mann-Whitney test p=0.4409		

*Adjusted mean difference is for 52 week time point only, the p value takes into account all time points

Table 3 Joint modelling analyses for the FEMuR III trial

Covariate	Coefficient (95% CI)	Z statistic	p-value
Longitudinal (NEADL)			
Time	0.4 (0.3, 0.5)	8.1	<0.001
Treatment effect (FEMuR intervention vs Usual rehabilitation care)	0.1 (-1.1, 1.3)	0.2	0.868
Survival (Time in weeks to drop out)			
Treatment effect (FEMuR intervention vs Usual rehabilitation care)	0.4 (-0.2, 1.0)	1.4	0.163
Overall (Time in weeks to drop out)			
Treatment effect (FEMuR intervention vs Usual rehabilitation care)	0.4 (-0.1, 1.0)	1.4	0.177
Association parameter	-0.3 (-0.4, -0.2)	-6.9	<0.001
Covariate	Coefficient (95% CI)	Z statistic	p-value
Longitudinal (HADS Anxiety)			
Time	-0.1 (-0.1, -0.09)	-13.8	<0.001
Treatment effect (FEMuR intervention vs Usual rehabilitation care)	-0.5 (-1.1, 0.1)	-1.6	0.118
Survival (Time in weeks to drop out)			
Treatment effect (FEMuR intervention vs Usual rehabilitation care)	1.3 (0.01, 2.7)	2.0	0.048
Overall (Time in weeks to drop out)			
Treatment effect (FEMuR intervention vs Usual rehabilitation care)	0.4 (-0.1, 0.9)	1.5	0.126
Association parameter	1.9 (1.5, 2.3)	8.6	<0.001
Covariate	Coefficient (95% CI)	Z statistic	p-value
Longitudinal (HADS Depression)			
Time*	-	-	-
Treatment effect (FEMuR intervention vs Usual rehabilitation care)	-0.4 (-0.9, 0.007)	-1.9	0.05
Survival (Time in weeks to drop out)			
Treatment effect (FEMuR intervention vs Usual rehabilitation care)	-0.02 (-0.5, 0.4)	-0.07	0.945
Overall (Time in weeks to drop out)			
Treatment effect (FEMuR intervention vs Usual rehabilitation care)	-0.04 (-0.5, 0.4)	-0.2	0.866
Association parameter	0.05 (-0.04, 0.1)	1.1	0.281

* Time of assessment has been omitted from the model due to estimation problems when it was included in the model