

Empowering students as co-creators: Building ethical AI competence for language and cultural learning

Nazaret Pérez Nieto
Angelo Silvestri
Francesca Deronda
Hannah Mathers



School of
Modern Languages
Ysgol leithoedd
Modern

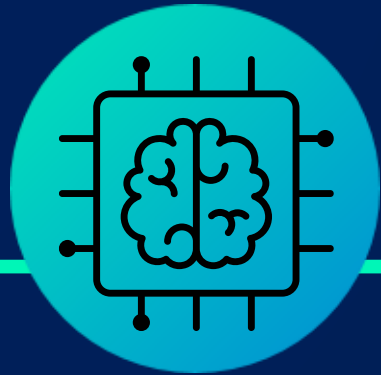


ROADMAP

- 1 **WHY THIS PROJECT**
- 2 **CREATION OF THE MLANG AI GROUP**
- 3 **MLANG AI GUIDELINES**
- 4 **LTA INTERNSHIPS**
- 5 **AI ETHICS RESOURCE BANK**
- 6 **AI LEARNING AND COMPETENCY MODULE**
- 7 **CONCLUSION**
- 8 **FUTURE PROJECTS AND COLLABORATION**

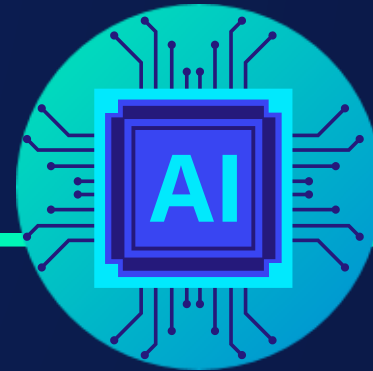


WHY THIS PROJECT?



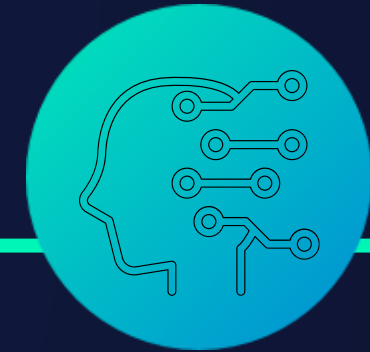
Russell Group Universities

- Develop principles for the ethical use of AI in education.
- Focus on AI literacy for staff and students.
- Integrate AI as a tool to enhance learning rather than banning it.



JISC Student perceptions on AI

- Academic use is evolving.
- Clear guidance is urgently needed.
- Ethical concerns are growing.
- Students want to be partners, not passengers.



Policies

- A new era: how AI is supporting teaching and learning: government response.
- Develop national guidance on the strategic implementation of AI in education.
- The Future Generations Commissioner for Wales' strategy for 2023-2030.

MLANG AI GROUP



- Language learning and assessing with Chat GPT and other Artificial Intelligence-based chatbots.
- Recruitment of students to:
 - Survey: Understand attitudes and perceptions around AI usage.
 - Reflective workshops: Discuss with students on the use and challenges of AI.
 - Practical workshops: Support students' use of AI (learning support and ethical use).
- Nomination AI Student Champions:
 - Creation of MLANG AI Guidelines for UG and PGT students.
 - Adoption of AI Assessment Types table ranging from no AI to full use of AI.

LTA INTERNSHIPS

FutureProofAI

01

AI Ethics Resource Bank: A curated collection of educational resources promoting the ethical use of AI in both academia and professional settings. This resource bank aligns with the university's graduate attributes and provide students with a framework for responsible AI engagement, enhancing their digital and employability skills.

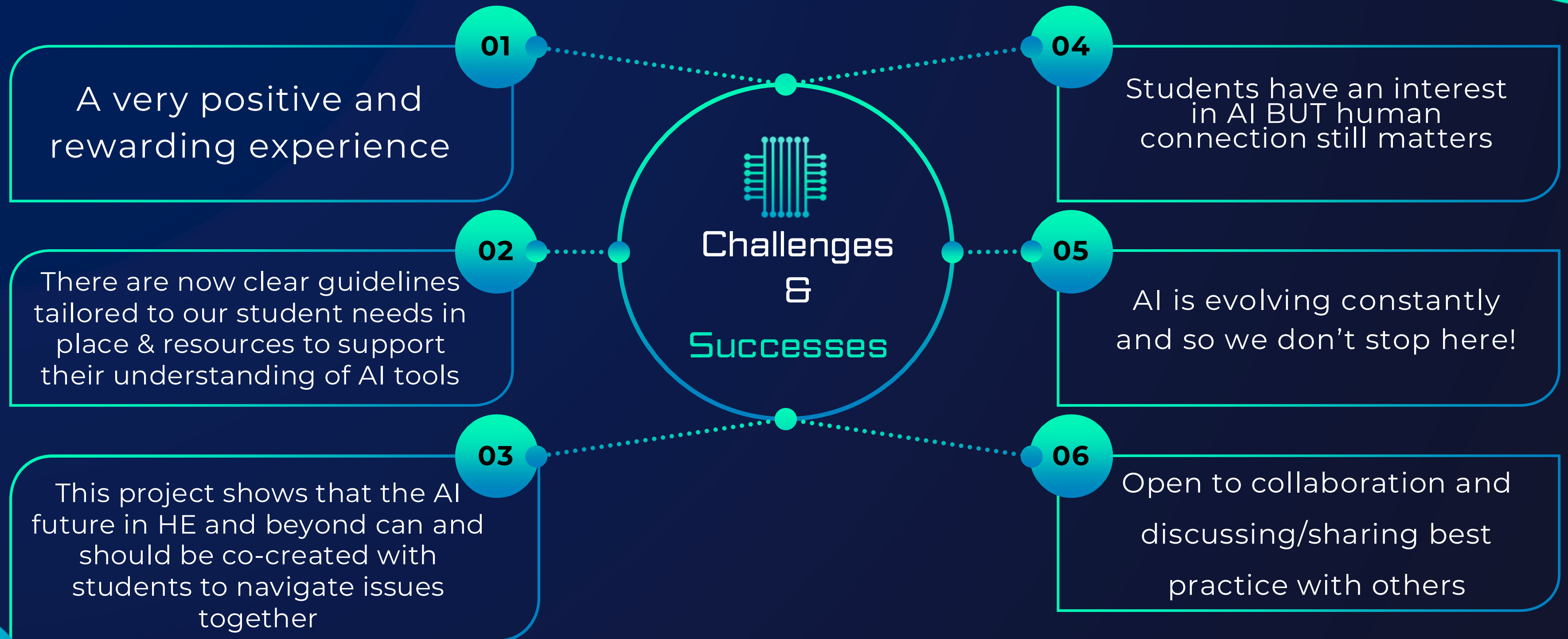


02

AI Learning and Competency (LC) Module – A structured, multi-unit module designed to introduce students to basic AI literacy and gradually expand towards practical AI applications in different aspects of their academic and professional journey. This will guide students from non-use to full integration of AI tools, ensuring they are equipped with ethical awareness and interdisciplinary AI knowledge.



CONCLUSIONS



Future projects and applications

- Applied for funding to the Cardiff University scheme 'Seeding Connections' to implement and develop the use of an immersive Virtual Lab for Language Teaching.
- Devising and preparing a project on the sustainability of the use of AI and AI cognitive implications.
- Future curriculum Project, Cardiff University designing lessons on the new interdisciplinary module 'Futures Curriculum'.





REFERENCES

- Russell Group Universities (2023) *Principles on the use of generative AI tools in education*. Available at: <https://www.russellgroup.ac.uk/policy/policy-briefings/principles-use-generative-ai-tools-education>
- Jisc (2025) *Student perceptions of AI*. Available at: <https://www.jisc.ac.uk/reports/student-perceptions-of-ai-2025>
- Welsh Government (2025) *A new era: how artificial intelligence (AI) is supporting teaching and learning: government response*. Available at: <https://www.gov.wales/new-era-how-artificial-intelligence-ai-supporting-teaching-and-learning-government-response-html>
- Welsh Government (2023) *The Future Generations Commissioner for Wales' strategy for 2023–2030, Cymru Can*. Available at: <https://futuregenerations.wales/discover/cymru-can/>.
- School of Modern Languages (MLANG)- *AI guidelines for UG and PGT students*.
- School of Modern Languages (MLANG) - *AI Assessment Type Table*.

Diolch yn fawr

Let's connect!



Nazaret Pérez Nieto

 perez-nieton@cardiff.ac.uk

 <https://uk.linkedin.com/in/nazaretpn/en>



Angelo Silvestri

 SilvestriAM@cardiff.ac.uk



Hannah Mathers

 MathersH@cardiff.ac.uk

 <https://www.linkedin.com/in/hannah-mathers>



Francesca Deronda

 Derondaf@cardiff.ac.uk

 www.linkedin.com/in/francesca-deronda