

Factors associated with symptoms of anxiety and depression in five cohorts of community-based older people: the HALCyon (Healthy Ageing across the Life Course) Programme

C. R. Gale^{1,2*}, A. Aihie Sayer¹, C. Cooper¹, E. M. Dennison¹, J. M. Starr^{2,3}, L. J. Whalley⁴, J. E. Gallacher⁵, Y. Ben-Shlomo⁶, D. Kuh⁷, R. Hardy⁷, L. Craig⁴, I. J. Deary² and the HALCyon Study Team

¹ MRC Lifecourse Epidemiology Unit, University of Southampton, Southampton, UK

² Centre for Cognitive Ageing and Cognitive Epidemiology, Department of Psychology, University of Edinburgh, Edinburgh, UK

³ Geriatric Medicine Unit, University of Edinburgh, Royal Victoria Hospital, Edinburgh, UK

⁴ Institute of Applied Health Sciences, University of Aberdeen, Aberdeen, UK

⁵ Department of Epidemiology, Statistics and Public Health, Centre for Health Sciences Research, Cardiff University, Cardiff, UK

⁶ Department of Social Medicine, University of Bristol, Bristol, UK

⁷ MRC Unit for Lifelong Health and Ageing, University College London, London, UK

Background. Symptoms of anxiety and depression are common in older people, but the relative importance of factors operating in early and later life in influencing risk is unclear, particularly in the case of anxiety.

Method. We used data from five cohorts in the Healthy Ageing across the Life Course (HALCyon) collaborative research programme: the Aberdeen Birth Cohort 1936, the Caerphilly Prospective Study, the Hertfordshire Ageing Study, the Hertfordshire Cohort Study and the Lothian Birth Cohort 1921. We used logistic regression to examine the relationship between factors from early and later life and risk of anxiety or depression, defined as scores of 8 or more on the subscales of the Hospital Anxiety and Depression Scale, and meta-analysis to obtain an overall estimate of the effect of each.

Results. Greater neuroticism, poorer cognitive or physical function, greater disability and taking more medications were associated in cross-sectional analyses with an increased overall likelihood of anxiety or depression. Associations between lower social class, either in childhood or currently, history of heart disease, stroke or diabetes and increased risk of anxiety or depression were attenuated and no longer statistically significant after adjustment for potential confounding or mediating variables. There was no association between birth weight and anxiety or depression in later life.

Conclusions. Anxiety and depression in later life are both strongly linked to personality, cognitive and physical function, disability and state of health, measured concurrently. Possible mechanisms that might underlie these associations are discussed.

Received 17 February 2010; Revised 19 December 2010; Accepted 19 January 2011; First published online 24 February 2011

Key words: Anxiety, cohort studies, depression, elderly, life course.

Introduction

Evidence from community-based surveys suggests that symptoms of depression and anxiety are common in older people. The prevalence of depressive symptoms in people aged 60 years or over in community settings ranges from 8% to 20% (Gallo & Lebowitz, 1999), while the prevalence of anxiety symptoms is

even higher, at between 15% and 52% (Bryant *et al.* 2008). A substantial proportion of older people with depressive symptoms also experiences symptoms of anxiety – 43% in one survey (Mehta *et al.* 2003). Such symptoms cause considerable distress, and may have implications for later health: individuals with severe forms of anxiety or depression have increased mortality (Wulsin *et al.* 1999; Brenes *et al.* 2007).

Susceptibility to anxiety and depression at older ages may be influenced by environmental exposures early in life. Several studies suggest that people whose fetal growth was impaired have an increased risk of anxiety and depression in adolescence and early

* Address for correspondence: C. R. Gale, Ph.D., MRC Lifecourse Epidemiology Unit (University of Southampton), Southampton General Hospital, Southampton SO16 6YD, UK.
(Email: crg@mrc.soton.ac.uk)

adulthood (Gale & Martyn, 2004; Alati *et al.* 2007; Bohnert & Breslau, 2008), though this is not a consistent finding (Osler *et al.* 2005; Inskip *et al.* 2008). Poor fetal growth may have a lasting influence on susceptibility to distress into middle age (Colman *et al.* 2007), but few studies have examined its relationship with anxiety and depression in later life (Thompson *et al.* 2001). Being brought up in a household that is socio-economically disadvantaged has also been linked with a higher risk of psychological distress in adult life (Schoon *et al.* 2003), though here too the evidence is inconsistent. Findings in young adults suggest that the proximal experience of low socio-economic status may exert a more important influence on risk of depression than socio-economic disadvantage in childhood (Poulton *et al.* 2002).

Among exposures later in the life course, the presence of chronic somatic disease (Beekman *et al.* 1997), disability (Braam *et al.* 2005), poorer physical function (Penninx *et al.* 1998), cognitive impairment (Dufouil *et al.* 1996) and obesity (Rivenes *et al.* 2009) have all been associated with increased depression in older people in cross-sectional analyses, though the links between cognitive impairment or obesity and depressive symptoms are not always consistent between the sexes (Kennedy *et al.* 1989; Mather *et al.* 2009). Fewer studies have examined factors linked with anxiety in later life (Vink *et al.* 2008), but there is some indication that there may be considerable overlap between concurrent risk factors for anxiety and depression (Schoevers *et al.* 2003).

One factor that may increase resilience to both anxiety and depression at older ages is higher cognitive ability earlier in life. People who score higher on tests of cognition in childhood or early adulthood have a lower risk of anxiety or depression (Martin *et al.* 2007; Gale *et al.* 2008, 2009).

The relative importance of these early- and later-life factors as potential determinants of anxiety or depression in older people is uncertain. Although there has been one systematic review and meta-analysis of data on risk factors for depression among community-dwelling older people (Cole & Dendukuri, 2003), it contained no data on neuroticism, physical function, obesity, social class, peak prior cognition, or factors from early life. To our knowledge, there has been no meta-analysis of risk factors for symptoms of anxiety in older people, largely due to the lack of relevant studies (Vink *et al.* 2008).

The aim of this study is to examine the associations between factors from early (birth weight and childhood social class) and later life [current social class, neuroticism, peak cognitive ability, fluid intelligence, physical function, disability, body mass index (BMI) and chronic illness] and depression and anxiety in five

cohorts of community-dwelling older people. We obtain overall effect estimates for each risk factor and examine the consistency of the associations using meta-analysis.

Method

Studies included

The Healthy Ageing across the Life Course (HALCyon) Programme is a collaborative research programme using data from nine UK cohorts to examine how factors across the life course influence psychological well-being and other aspects of healthy ageing in older people. This study uses data from five of these cohorts ($n = 5570$).

The Aberdeen Birth Cohort 1936 (ABC)

In 1947, as part of the Scottish Mental Survey, 70 805 children born in 1936 who attended school in Scotland sat a test of mental ability. In 1999–2001, 567 of these people who were living in the Aberdeen area were invited to participate in a study of cognitive ageing (Deary *et al.* 2004). Of the 423 (75%) participants, 418 completed the Hospital Anxiety and Depression Scale (HADS; Zigmond & Snaith, 1983).

The Caerphilly Prospective Study (CaPS)

This study was originally set up to study the aetiology of heart disease in men (Anon, 1984). In 2002–2004, 1225 men (75% of those invited) took part in the fifth follow-up of the cohort; 1028 completed the HADS.

The Hertfordshire Ageing Study (HAS)

From 1911 until 1948 the birth weight of each baby born in Hertfordshire was recorded. Those born between 1920 and 1930 and who were still living in the county were invited to participate in a study on influences on ageing (Syddall *et al.* 2009). In 2003–2005, 359 people (60% of those surviving) took part in a follow-up study; 357 completed the HADS.

The Hertfordshire Cohort Study (HCS)

In 1998–2004, men and women born in Hertfordshire between 1931 and 1939 and still living in the county were recruited to a new study of influences on chronic disorders in later life (Syddall *et al.* 2005). A total of 3225 people (53% of those invited) took part and 3221 completed the HADS.

The Lothian Birth Cohort 1921 (LBC)

In 1932, as part of the Scottish Mental Survey, 87 498 children born in 1921 who attended school in Scotland

sat a test of mental ability. In 1999–2001, those of them living in the Edinburgh area were invited (through letters and adverts) to participate in a study of influences on cognitive ageing (Deary *et al.* 2004). Of the 549 people who participated, 547 completed the HADS.

Depression and anxiety

Symptoms of depression and anxiety were assessed using the HADS. This scale was designed to identify cases of anxiety (HADS-A) and depression (HADS-D) using two subscales, each of seven items. Exploration of the psychometric properties of the scale in four of the cohorts studied here has confirmed its bi-dimensional structure in community-dwelling older people (Gale *et al.* 2010). Scores range from 0 to 21, with higher scores indicating more severe symptoms. The authors of the HADS suggest cut-points for scores according to possible (8–10) or probable (>11) depression or anxiety. As numbers with probable depression were very small in some cohorts (see Table 1), we defined the presence or absence of depression or anxiety according to whether scores on the relevant subscale were ≥ 8 .

Birth weight

Information on birth weight, from health visitor records, was available for all participants in the HCS and HAS. Information on maternal recollection of birth weight was available for a subset of men in the CaPS ($n = 465$) who had been recruited at the start of the study.

Social class in childhood or currently

Participants provided information on father's occupation at birth (HAS, HCS) or at age 11 years (ABC, CaPS, LBC) and on their own (or for married women, their husband's) current or most recent occupation. In CaPS, information on father's occupation was collected during the initial phase of the study only, so is unavailable for participants recruited subsequently. In the CaPS, HAS and HCS, occupations were classified into six groups according to the Registrar General's social class categories (CaPS) or the Office of Population Censuses and Surveys occupational classification scheme (OPCS, 1990) (HAS, HCS). In the LBC, occupations were classified into five groups according to the Registrar General's social class categories. In the ABC, occupations were classified into nine groups according to the standard occupational classification.

Cognitive function

Participants in all cohorts, except the HCS, had their cognitive function assessed when they completed the

HADS. Peak prior cognitive ability – or crystallized intelligence – was estimated using the National Adult Reading Test (Nelson & Willison, 1991) (in ABC, LBC and CaPS) or the Mill Hill Vocabulary Test (in HAS) (Raven, 1965). Performance on such tests is highly correlated with cognitive ability in childhood (Crawford *et al.* 2001). Current (fluid) intelligence was assessed with Raven's Standard Progressive Matrices (Raven *et al.* 1977) (in ABC and LBC) or part 1 of the AH4 test (in CaPS and HAS) (Heim, 1968).

Physical function

Participants in four of the cohorts had their physical function measured when they completed the HADS. With the exception of those whose balance difficulties or need for a walking aid made standing on one leg impossible, all participants in the CaPS, HAS and HCS were asked to do a timed flamingo stand for a maximum of 30 s (Briggs *et al.* 1989). Participants in the HAS, HCS and LBC had their hand grip strength measured. Three measurements were made of both hands, using a Jamar dynamometer, and the maximum overall grip strength was used in the analysis.

Self-reported disability

Participants in the HAS, HCS and LBC completed the Townsend Disability Scale when they completed the HADS. This scale enquires about level of difficulty experienced in carrying out activities of daily living (Townsend, 1979). Scores range from 0 to 18, with higher scores indicating greater disability. In the HCS, this scale, along with the HADS, was administered to a subset only ($n = 640$).

Neuroticism

Information on neuroticism was available for four cohorts. In the ABC, HAS and LBC, neuroticism was assessed when the HADS was completed; in the CaPS, it was assessed around 14 years prior to the HADS measurement. Neuroticism was measured using the relevant items from the Neuroticism-Extroversion-Openness (NEO) Five Factor Inventory (Costa & McCrae, 1992) (ABC and HAS), the International Personality Item Pool (IPIP) Big-Five Factor Inventory (LBC), or with the Spielberger State-Trait Anxiety Inventory (CaPS; Spielberger *et al.* 1983).

BMI

Participants had their height and weight measured when they completed the HADS. BMI was calculated as weight divided by height (kg/m^2).

Table 1. Characteristics of women and men from the ABC, HAS, HCS, LBC and the CaPS

	Women				Men				
	ABC (n=213)	HAS (n=149)	HCS (n=1539)	LBC (n=315)	ABC (n=205)	CaPS (n=1027)	HAS (n=208)	HCS (n=1682)	LBC (n=232)
HADS anxiety, no. (%) scoring									
0–7	139 (65.3)	108 (72.5)	1153 (74.9)	228 (72.4)	155 (75.6)	875 (85.1)	181 (87.0)	1421 (84.5)	196 (82.5)
8–10, possible anxiety	49 (23.0)	25 (16.8)	226 (14.7)	64 (20.3)	39 (19.0)	87 (8.5)	21 (10.1)	169 (10.0)	29 (12.5)
11 or more, probable anxiety	25 (11.7)	16 (10.7)	160 (10.4)	23 (7.3)	11 (5.4)	66 (6.4)	6 (2.9)	92 (5.5)	7 (3.0)
HADS depression, no. (%) scoring									
0–7	201 (94.4)	130 (87.2)	1438 (93.4)	295 (93.7)	193 (94.1)	930 (90.6)	186 (89.4)	1590 (94.5)	217 (93.5)
8–10, possible depression	9 (4.2)	17 (11.4)	79 (5.1)	15 (4.8)	9 (4.4)	66 (6.4)	15 (7.2)	67 (4.0)	14 (6.0)
11 or more, probable depression	3 (1.4)	2 (1.3)	22 (1.4)	5 (1.6)	3 (1.5)	31 (3.0)	7 (3.4)	25 (1.5)	1 (3.0)
Age, years	64.4 (0.78)	76.3 (2.14)	66.6 (2.73)	79.1 (0.57)	64.5 (0.78)	73.1 (4.16)	76.7 (2.37)	65.6 (2.92)	79.1 (0.59)
Birth weight, kg	–	3.36 (0.47)	3.34 (0.52)	–	–	3.65 (0.89)	3.49 (0.50)	3.48 (0.55)	–
Father in professional/managerial social class, no. (%)	21 (12.3)	7 (5.19)	238 (16.5)	105 (37.4)	21 (14.3)	69 (8.95)	21 (10.6)	249 (15.8)	81 (40.1)
Professional/managerial social class, no. (%)	42 (25.1)	30 (20.1)	430 (30.0)	168 (53.3)	43 (29.3)	254 (26.2)	80 (38.5)	502 (30.8)	144 (62.1)
Peak prior cognition									
NART	32.1 (8.02)	–	–	34.2 (8.25)	31.7 (8.69)	–	–	–	34.2 (8.40)
Mill Hill	–	18.5 (4.94)	–	–	–	26.5 (11.9)	19.3 (4.66)	–	–
Current fluid intelligence									
Raven's matrices	34.5 (8.76)	–	–	30.1 (8.71)	35.9 (8.34)	–	–	–	32.6 (8.75)
AH4	–	11.8 (4.35)	–	–	–	24.9 (10.8)	12.2 (4.91)	–	–
Grip strength, kg	–	23.6 (6.63)	26.5 (5.75)	20.6 (4.49)	–	–	38.4 (8.06)	44.0 (7.51)	34.7 (7.36)
Flamingo stand time ^a , s	–	8.1 (3.5–19.5)	16.9 (7.3–30)	–	–	15.1 (4.50–30)	12.6 (4.6–30)	27.0 (7.7–30)	–
Townsend disability ^a	–	4 (2–7)	2 (1–4)	2 (0–4)	–	–	2 (1–5)	1 (0–2)	1 (0–2.5)
Number of medications ^a	1 (0–1)	3 (2–5)	2 (1–4)	2 (1–4)	1 (0–1)	–	4 (2–6)	1 (0–3)	2 (1–4)
History of heart attack, no. (%)	26 (12.2)	3 (2.01)	–	36 (11.5)	36 (17.6)	136 (14.7)	25 (12.0)	–	52 (22.4)
History of diabetes, no. (%)	7 (3.28)	10 (6.71)	85 (5.5)	15 (4.8)	11 (5.37)	130 (12.7)	27 (13.0)	126 (7.5)	13 (5.56)
History of stroke/TIA, no. (%)	–	10 (6.71)	47 (3.1)	20 (6.33)	–	130 (14.0)	23 (11.1)	92 (5.5)	22 (9.40)
BMI, kg/m ²	26.9 (5.02)	27.7 (5.16)	27.6 (4.91)	26.2 (4.57)	26.8 (3.64)	27.7 (3.90)	27.6 (4.05)	27.2 (3.76)	26.2 (3.53)
Neuroticism									
NEO ^b	18.3 (7.75)	27.3 (8.99)	–	–	16.7 (7.29)	–	26.6 (7.21)	–	–
Spielberger	–	–	–	–	–	35.8 (8.9)	–	–	–
IPIP	–	–	–	23.9 (7.88)	–	–	–	–	24.8 (8.48)

ABC, Aberdeen Birth Cohort 1936; HAS, Hertfordshire Ageing Study; HCS, Hertfordshire Cohort Study; LBC, Lothian Birth Cohort 1921; CaPS, Caerphilly Prospective Study; HADS, Hospital Anxiety and Depression Scale; NART, National Adult Reading Test; TIA, transient ischaemic attack; BMI, body mass index; NEO, Neuroticism-Extroversion-Openness; IPIP, International Personality Item Pool.

Data are given as mean (standard deviation) or as number (percentage).

^a Median (interquartile range).

^b The two cohorts that used the NEO employed different scoring, hence the variation in mean scores.

Medical history and current medications

When they completed the HADS, participants were asked whether they had ever been told they had diabetes or a stroke or transient ischaemic attack (TIA); participants in the ABC, CaPS, HAS and LBC were also asked about history of heart attack. Information on the number of current medications was available for the ABC, HAS, HCS and LBC.

Statistical analysis

We used logistic regression to examine the odds ratio (OR) for anxiety or depression (HADS score ≥ 8) according to the risk factors described above, analysing men and women in each cohort separately. Preliminary analyses showed that among our participants increasing age was associated with higher depression scores; adjustment for age modified some associations, so we adjusted for age in our analyses. We did not adjust for age when examining risk factors for anxiety as there was no association between age and anxiety scores, and adjustment for it did not alter associations. To be able to combine effect estimates from each cohort despite differences in some of the measures used, we converted all risk factors that were continuously distributed (except number of medications) into sex-cohort specific standard deviation (s.d.) scores. To obtain an overall estimate of the effect of each risk factor and to quantify the uncertainty of that estimate, we used meta-analysis to combine the sex-specific estimates from each cohort. We calculated the pooled effect of each potential risk factor using DerSimonian and Laird random effect models, thereby incorporating an estimate of between-sample variation into the calculation (Deeks *et al.* 2001). We examined the heterogeneity of the estimates between the samples using I^2 [with 95% confidence intervals (CIs)] and Q statistics (Higgins *et al.* 2003). The I^2 statistic provides the percentage of total variation across studies due to heterogeneity rather than chance. Values for I^2 of 25%, 50% or 75% suggest low, moderate or high heterogeneity, respectively (Higgins *et al.* 2003). We produced forest plots to describe the results of each meta-analysis. Finally, we examined how our findings changed if meta-analyses were based on effect estimates that had been adjusted for covariates. We chose as covariates variables that were correlated with both the outcomes and the characteristic of interest with a p value < 0.1 in one or more cohorts. For cognition, physical function or chronic illness, each of which was assessed by more than one variable, each variable was considered separately and was not adjusted for the other related measure(s), e.g. grip strength was not adjusted for flamingo stand time,

or history of diabetes for number of medications. The exception was change in fluid intelligence, which was estimated by adjusting current fluid intelligence for peak prior intelligence (see footnotes to Tables 2 and 3).

Results

Table 1 describes the cohorts. The prevalence of possible or probable anxiety was higher in women than in men, though there were no differences between the sexes in the prevalence of depression. The prevalence of possible or probable depression was consistently lower than the prevalence of anxiety.

We examined the odds for anxiety or depression according to each risk factor, analysing each sample of men and women separately. Tables 2 and 3 show results of the meta-analyses of these effect estimates. Figs 1, 2, 3, 4 and 5 present forest plots of the minimally adjusted meta-analyses.

Meta-analyses of univariate estimates showed that overall, an increased likelihood of anxiety was associated with lower social class, either in childhood or currently, poorer cognition (whether assessed as peak prior intelligence, current fluid intelligence or change in fluid intelligence), poorer physical function (measured by lower grip strength or shorter duration of a flamingo stand), greater disability, poorer health (as indicated by number of medications or history of heart attack, diabetes, or stroke/TIA), and greater neuroticism (Table 2). There was no overall association between either birth weight or current BMI and anxiety. Multivariable adjustment for potential confounding or mediating factors attenuated most of the effect estimates such that there was no significant overall association between anxiety and social class or history of chronic disease, but poorer physical function, greater disability, poorer current fluid intelligence, number of medications and greater neuroticism were significantly associated with risk of anxiety. Multivariable adjustment strengthened the weak association between BMI and anxiety, such that higher BMI was associated with a lower likelihood of anxiety.

There was virtually complete overlap between the factors associated with anxiety and those associated with depression – the direction of the association with BMI being the only difference. Meta-analyses of age-adjusted effect estimates showed that an increased likelihood of depression was associated with lower social class, both in childhood and currently, poorer cognition, poorer physical function, greater disability, poorer health, greater neuroticism and higher BMI (Table 3). There was no overall association between birth weight and risk of depression. After multivariable adjustment, the associations between

Table 2. Results of meta-analyses of risk factors for anxiety

Characteristics	Unadjusted odds for anxiety		Multivariable-adjusted ^a odds for anxiety		Forest plots
	Overall effect OR (95% CI)	Heterogeneity ^q	Overall effect OR (95% CI)	Heterogeneity ^q	
Birth weight, per s.d.	1.04 (0.90–1.21)	$I^2 = 57.3\%$ (0–84%), $p = 0.05$	1.06 (0.89–1.26) ^b	$I^2 = 63.6\%$ (4–86%), $p = 0.03$	Fig. 1a
Social class in childhood, per s.d.	1.10 (1.00–1.20)	$I^2 = 23.8\%$ (0–64%), $p = 0.23$	1.00 (0.92–1.08) ^c	$I^2 = 0.6\%$ (0–65%), $p = 0.43$	Fig. 1b
Social class currently, per s.d.	1.26 (1.18–1.36)	$I^2 = 0\%$ (0–59%), $p = 0.56$	1.06 (0.94–1.19) ^d	$I^2 = 0\%$ (0–0%), $p = 0.96$	Fig. 1c
Peak prior intelligence, per s.d.	0.75 (0.68–0.83)	$I^2 = 1.0\%$ (0–71%), $p = 0.42$	0.84 (0.66–1.06) ^e	$I^2 = 44.0\%$ (0–76%), $p = 0.10$	Fig. 2a
Current fluid intelligence, per s.d.	0.67 (0.60–0.76)	$I^2 = 0\%$ (0–68%), $p = 0.48$	0.83 (0.71–0.98) ^f	$I^2 = 0\%$ (0–46%), $p = 0.78$	Fig. 2b
Change in fluid intelligence, per s.d.	0.78 (0.62–0.97)	$I^2 = 56.5\%$ (0–81%), $p = 0.03$	0.95 (0.68–1.33) ^g	$I^2 = 60.3\%$ (0–46%), $p = 0.78$	Fig. 2c
Grip strength, per s.d.	0.71 (0.59–0.85)	$I^2 = 36.1\%$ (0–74%), $p = 0.17$	0.88 (0.80–0.96) ^h	$I^2 = 5.8\%$ (9–83%), $p = 0.02$	Fig. 3a
Flamingo stand time, per s.d.	0.77 (0.66–0.91)	$I^2 = 41.4\%$ (0–78%), $p = 0.15$	0.77 (0.67–0.88) ⁱ	$I^2 = 1.9\%$ (0–80%), $p = 0.40$	Fig. 3b
Townsend disability, per s.d.	1.36 (1.21–1.54)	$I^2 = 0\%$ (0–73%), $p = 0.51$	1.21 (1.02–1.44) ^j	$I^2 = 0\%$ (0–64%), $p = 0.62$	Fig. 3c
Medications, per item	1.16 (1.12–1.21)	$I^2 = 11.9\%$ (0–71%), $p = 0.33$	1.13 (1.07–1.19) ^k	$I^2 = 0\%$ (0–54%), $p = 0.67$	Fig. 4a
History of heart attack	1.63 (1.13–2.34)	$I^2 = 70.6\%$ (36–87%), $p = 0.002$	1.20 (0.90–1.60) ^l	$I^2 = 30.3\%$ (0–73%), $p = 0.22$	Fig. 4b
History of diabetes	1.32 (1.03–1.68)	$I^2 = 0\%$ (0–40%), $p = 0.79$	1.35 (0.95–1.92) ^m	$I^2 = 0\%$ (0–52%), $p = 0.66$	Fig. 4c
History of stroke/TIA	1.55 (1.23–1.97)	$I^2 = 0\%$ (0–13%), $p = 0.92$	1.25 (0.78–1.99) ⁿ	$I^2 = 0\%$ (0–63%), $p = 0.63$	Fig. 5a
BMI, per s.d.	0.91 (0.82–1.01)	$I^2 = 40.6\%$ (0–73%), $p = 0.10$	0.85 (0.75–0.96) ^o	$I^2 = 0\%$ (0–63%), $p = 0.47$	Fig. 5b
Neuroticism, per s.d.	3.37 (2.63–4.33)	$I^2 = 57.7\%$ (2–82%), $p = 0.03$	2.88 (2.10–3.94) ^p	$I^2 = 63.2\%$ (14–83%), $p = 0.02$	Fig. 5c

OR, Odds ratio; CI, confidence interval; s.d., standard deviation; TIA, transient ischaemic attack; BMI, body mass index.

^a Details of the choice of covariates for the multivariable analyses are given in the Method section. The covariates included in the multivariable analyses of each characteristic are listed in footnotes b to p. ^b Childhood social class, BMI. ^c Current social class, fluid intelligence, neuroticism, grip strength, BMI. ^d Childhood social class, fluid intelligence, neuroticism, medications, flamingo stand time, grip strength, Townsend disability, diabetes. ^e Childhood and current social class, neuroticism, grip strength, Townsend disability. ^{f,g} Childhood and current social class, neuroticism, medications, diabetes, heart disease, BMI, grip strength, Townsend disability. ^h Current social class, BMI, medications, heart disease, peak prior intelligence, Townsend disability. ⁱ Childhood and current social class, BMI, fluid intelligence, heart disease, stroke, medications. ^j Current social class, neuroticism, fluid intelligence, BMI, grip strength, flamingo stand time, medications, stroke, heart disease. ^k Current social class, Townsend disability, grip strength, flamingo stand time. ^l Fluid intelligence, grip strength, flamingo stand time, Townsend disability. ^m Childhood and current social class, BMI, flamingo stand time, grip strength, Townsend disability. ⁿ Townsend disability, fluid intelligence. ^o Childhood and current social class, fluid intelligence, neuroticism, flamingo stand time, medications, diabetes, Townsend disability. ^p Childhood and current social class, fluid intelligence, BMI, heart disease, medications, Townsend disability. ^q I^2 statistic with 95% CIs; p values from Cochran's Q statistic.

Table 3. Results of meta-analyses of risk factors for depression

Characteristics	Age-adjusted odds for depression		Multivariable-adjusted ^a odds for depression		Forest plots
	Overall effect OR (95% CI)	Heterogeneity ^q	Overall effect OR (95% CI)	Heterogeneity ^q	
Birth weight, per s.d.	0.94 (0.81–1.08)	$I^2 = 12.7\%$ (0–82%), $p = 0.33$	1.05 (0.89–1.26) ^b	$I^2 = 54.5\%$ (0–83%), $p = 0.07$	Fig 1a
Social class in childhood, per s.d.	1.20 (1.07–1.34)	$I^2 = 0\%$ (0–60%), $p = 0.51$	1.10 (0.95–1.26) ^c	$I^2 = 0\%$ (0–54%), $p = 0.63$	Fig 1b
Social class currently, per s.d.	1.35 (1.19–1.58)	$I^2 = 12.3\%$ (0–54%), $p = 0.33$	1.09 (0.81–1.46) ^d	$I^2 = 38.8\%$ (0–72%), $p = 0.11$	Fig 1c
Peak prior intelligence, per s.d.	0.63 (0.51–0.78)	$I^2 = 30.1\%$ (0–70%), $p = 0.20$	0.76 (0.60–0.97) ^e	$I^2 = 0\%$ (0–67%), $p = 0.51$	Fig 2a
Current fluid intelligence, per s.d.	0.73 (0.56–0.94)	$I^2 = 48.4\%$ (0–78%), $p = 0.07$	0.74 (0.57–0.96) ^f	$I^2 = 0\%$ (0–66%), $p = 0.53$	Fig 2b
Change in fluid intelligence, per s.d.	0.79 (0.62–1.01)	$I^2 = 43.7\%$ (0–76%), $p = 0.10$	0.78 (0.57–1.06) ^g	$I^2 = 0\%$ (0–69%), $p = 0.46$	Fig 2c
Grip strength, per s.d.	0.50 (0.41–0.62)	$I^2 = 0\%$ (0–59%), $p = 0.68$	0.83 (0.67–1.01) ^h	$I^2 = 29.7\%$ (0–71%), $p = 0.21$	Fig 3a
Flamingo stand time, per s.d.	0.52 (0.42–0.64)	$I^2 = 0\%$ (0–79%), $p = 0.41$	0.59 (0.45–0.76) ⁱ	$I^2 = 0.8\%$ (0–79%), $p = 0.40$	Fig 3b
Townsend disability, per s.d.	2.63 (1.56–3.52)	$I^2 = 70\%$ (30–87%), $p = 0.01$	1.86 (1.30–2.67) ^j	$I^2 = 12.9\%$ (0–78%), $p = 0.33$	Fig 3c
Medications, per item	1.28 (1.16–1.40)	$I^2 = 54.7\%$ (0–79%), $p = 0.03$	1.24 (1.15–1.35) ^k	$I^2 = 0\%$ (0–65%), $p = 0.48$	Fig 4a
History of heart attack	1.31 (0.97–1.77)	$I^2 = 10.2\%$ (0–74%), $p = 0.35$	1.17 (0.88–1.55) ^l	$I^2 = 0\%$ (0–69%), $p = 0.47$	Fig 4b ^r
History of diabetes	2.05 (1.33–3.15)	$I^2 = 36.8\%$ (0–73%), $p = 0.15$	1.41 (0.81–2.43) ^m	$I^2 = 10.6\%$ (0–71%), $p = 0.35$	Fig 4c ^r
History of stroke/TIA	2.37 (1.47–3.83)	$I^2 = 42.4\%$ (0–77%), $p = 0.12$	0.88 (0.75–1.02) ⁿ	$I^2 = 0\%$ (0–84%), $p = 0.40$	Fig 5a ^r
BMI, per s.d.	1.16 (0.99–1.37)	$I^2 = 44.8\%$ (0–75%), $p = 0.07$	0.91 (0.73–1.13) ^o	$I^2 = 0\%$ (0–0%), $p = 0.97$	Fig 5b
Neuroticism, per s.d.	2.53 (2.08–3.07)	$I^2 = 10.1\%$ (0–74%), $p = 0.35$	2.21 (1.72–2.83) ^p	$I^2 = 9.7\%$ (0–74%), $p = 0.36$	Fig 5c

OR, Odds ratio; CI, confidence interval; s.d., standard deviation; TIA, transient ischaemic attack; BMI, body mass index.

^a Details of the choice of covariates for the multivariable analyses are given in the Method section. The covariates included in the multivariable analyses of each characteristic as well as age are listed in footnotes b to p. ^b Childhood social class, BMI. ^c Current social class, fluid intelligence, neuroticism, grip strength, BMI. ^d Childhood social class, fluid intelligence, neuroticism, medications, flamingo stand time, grip strength, Townsend disability, diabetes. ^e Childhood and current social class, neuroticism, grip strength, Townsend disability. ^{f,g} Childhood and current social class, neuroticism, medications, diabetes, heart disease, BMI, grip strength, Townsend disability. ^h Current social class, BMI, medications, heart disease, peak prior intelligence, Townsend disability. ⁱ Childhood and current social class, BMI, fluid intelligence, heart disease, stroke, medications. ^j Current social class, neuroticism, fluid intelligence, BMI, grip strength, flamingo stand time, medications, stroke, heart disease. ^k Current social class, BMI, Townsend disability, grip strength, flamingo stand time. ^l Fluid intelligence, grip strength, flamingo stand time, Townsend disability. ^m Childhood and current social class, BMI, flamingo stand time, grip strength, Townsend disability. ⁿ Townsend disability, fluid intelligence. ^o Childhood and current social class, fluid intelligence, neuroticism, flamingo stand time, medications, diabetes, Townsend disability. ^p Childhood and current social class, fluid intelligence, BMI, heart disease, medications, Townsend disability. ^q I^2 statistic with 95% CIs; p values from Cochran's Q statistic. ^r In the Lothian Birth Cohort 1921, there were no cases of heart attack, stroke/TIA, or diabetes among the small number of men with depression, so only the women from this cohort are included in the meta-analyses.

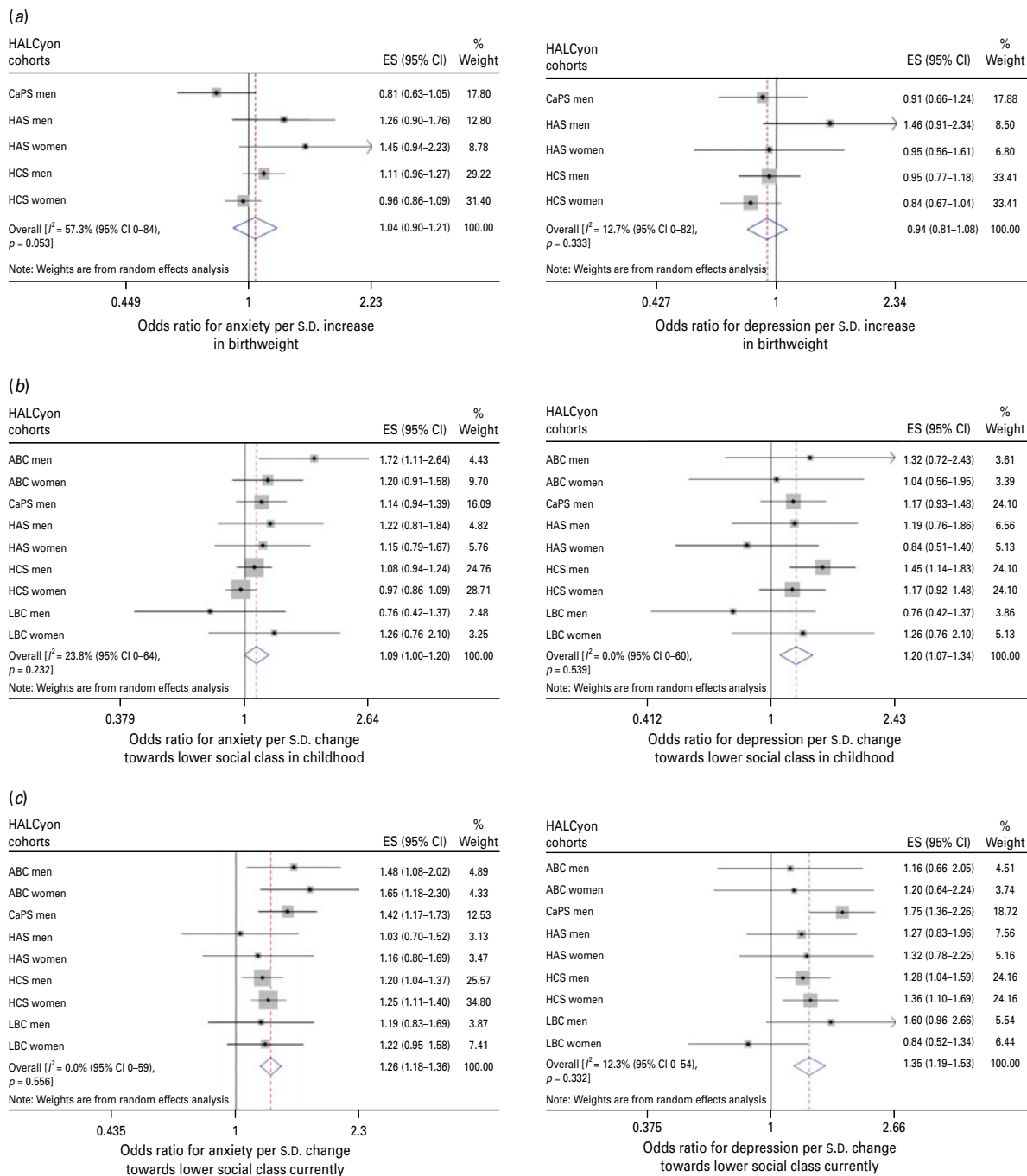


Fig. 1. Forest plots of meta-analyses of the relationships between (a) birth weight, (b) social class in childhood and (c) social class in adulthood and odds for anxiety or depression. HALCyon, Healthy Ageing across the Life Course; ES, effect size; CI, confidence interval; CaPS, Caerphilly Prospective Study; HAS, Hertfordshire Ageing Study; HCS, Hertfordshire Cohort Study; s.d., standard deviation; ABC, Aberdeen Birth Cohort 1936; LBC, The Lothian Birth Cohort 1921.

social class, history of chronic disease or BMI and depression ceased to be statistically significant, but risk of depression remained significantly associated with poorer cognition, poorer physical function, greater disability, number of medications and greater neuroticism.

For most of the overall effect estimates for anxiety and depression, the I^2 statistics were less than 50%, implying low to moderate heterogeneity. However, as expected given the number of our samples, 95% CIs around the I^2 statistics tended to be wide, ranging from as low as 0% to as high as 87%, suggesting

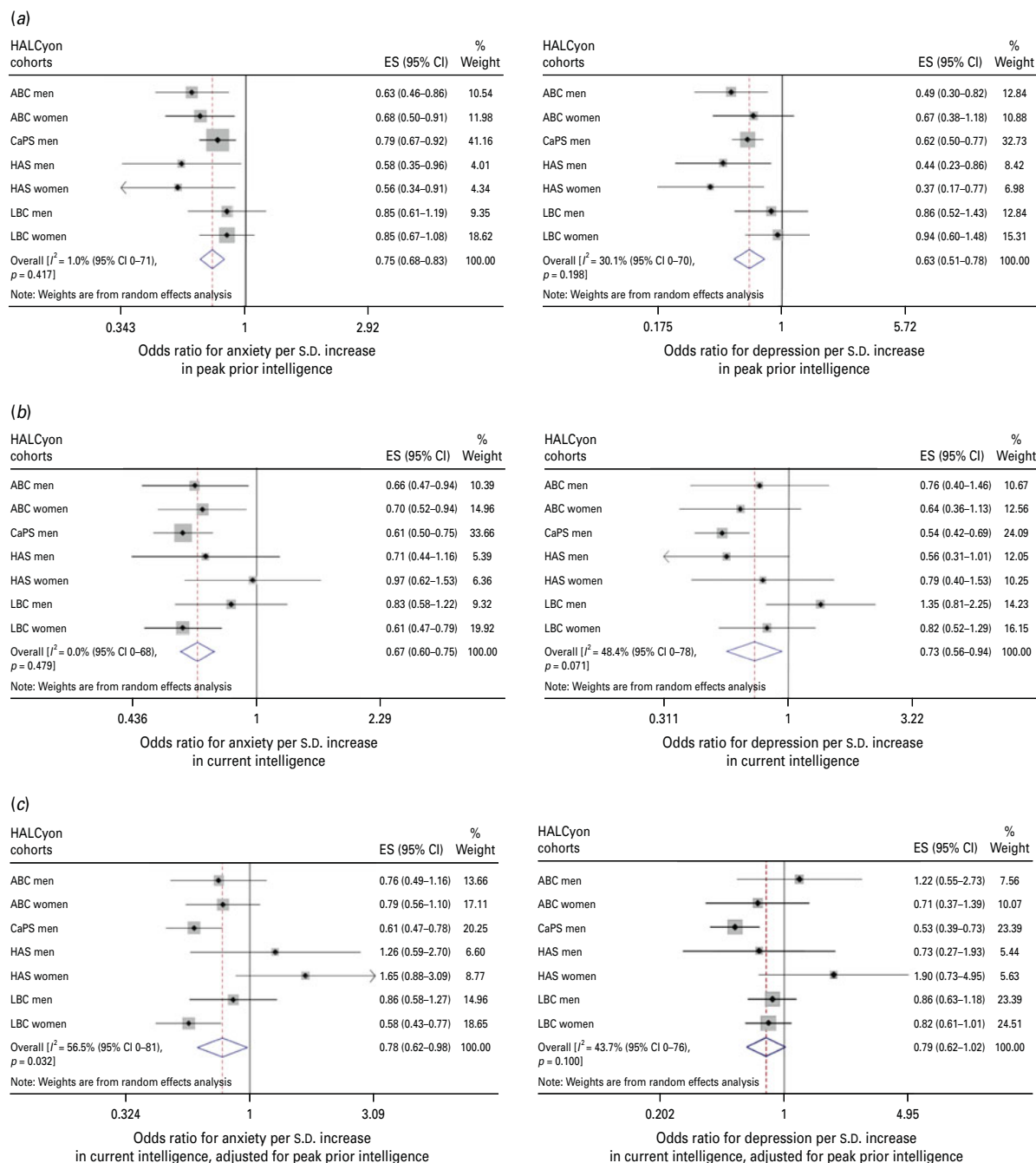


Fig. 2. Forest plots of meta-analyses of the relationships between (a) peak prior intelligence, (b) current fluid intelligence and (c) change in fluid intelligence and odds for anxiety or depression. HALCYon, Healthy Ageing across the Life Course; ES, effect size; CI, confidence interval; ABC, Aberdeen Birth Cohort 1936; CaPS, Caerphilly Prospective Study; HAS, Hertfordshire Ageing Study; LBC, The Lothian Birth Cohort 1921; s.d., standard deviation.

considerable uncertainty as to the true extent of heterogeneity.

In cases where inspection of the forest plots, coupled with the I^2 statistics, suggested that there might be sex differences in the strength of associations, we stratified by sex in order to examine differences in effect size. In general, effect sizes differed only slightly

between the sexes. In the case of depression, the most pronounced difference was seen for disability, where a s.d. increase in Townsend score was associated with an OR of 2.81 (95% CI 1.11–7.11) in men and an OR of 2.10 (95% CI 1.34–3.30) in women. In the case of anxiety, the only marked difference was seen for neuroticism where a s.d. increase was associated with an OR of 2.64

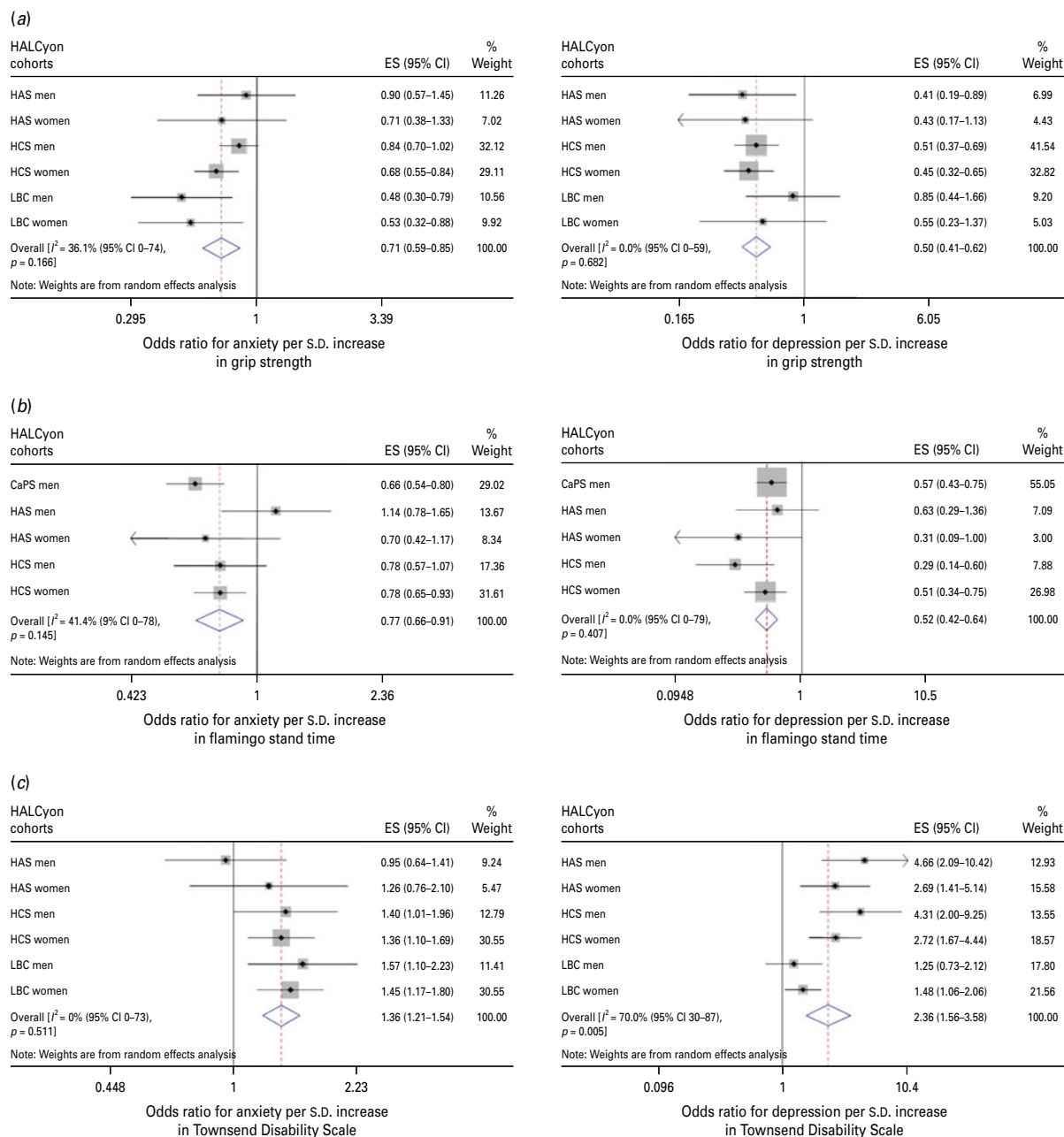


Fig. 3. Forest plots of meta-analyses of the relationships between (a) grip strength, (b) flamingo stand time and (c) Townsend disability scale and odds for anxiety or depression. HALCyon, Healthy Ageing across the Life Course; ES, effect size; CI, confidence interval; HAS, Hertfordshire Ageing Study; HCS, Hertfordshire Cohort Study; LBC, The Lothian Birth Cohort 1921; S.D., standard deviation; CaPS, Caerphilly Prospective Study.

(95% CI 2.26–3.08) in men and an OR of 4.65 (95% CI 3.45–6.28) in women.

In total, 66% of people categorized as having depression were also categorized as having anxiety; co-morbidity was less common among those with anxiety, of whom 20% had depression. To check whether the considerable overlap in risk factors for anxiety or depression was due to the presence of people with co-morbidity, we repeated all our

analyses excluding these individuals. Results changed only slightly (data not shown).

Discussion

Neuroticism

Neuroticism was the one of the factors that was most strongly linked with risk of anxiety or depression. Overall, a S.D. increase in neuroticism was associated

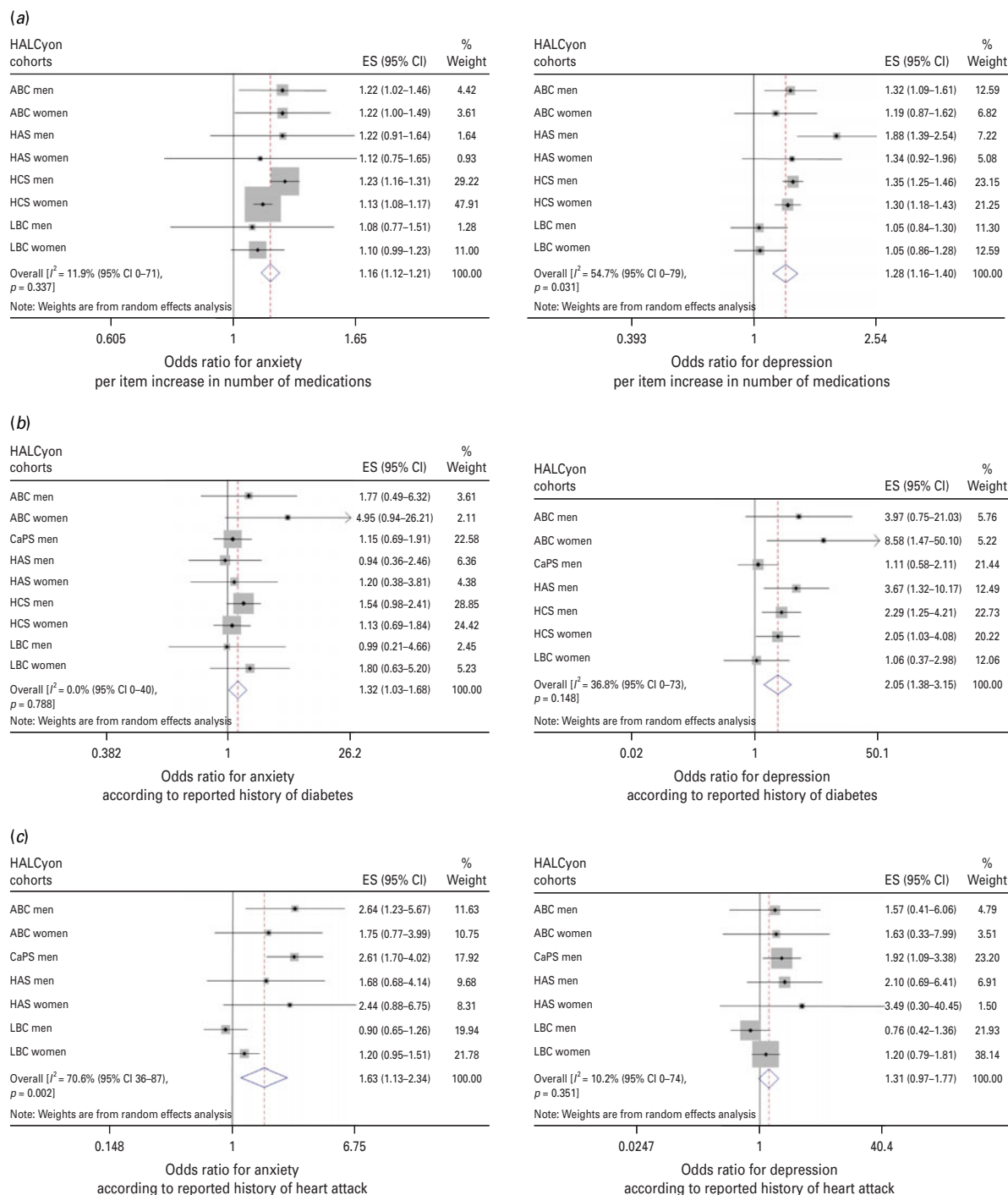


Fig. 4. Forest plots of meta-analyses of the relationships between (a) number of medications, (b) history of heart attack and (c) history of diabetes and odds for anxiety or depression. HALCyon, Healthy Ageing across the Life Course; ES, effect size; CI, confidence interval; ABC, Aberdeen Birth Cohort 1936; HAS, Hertfordshire Ageing Study; HCS, Hertfordshire Cohort Study; LBC, The Lothian Birth Cohort 1921; s.d., standard deviation; CaPS, Caerphilly Prospective Study.

with a more than three-fold increase in the odds of anxiety and a more than two-fold increase in the odds of depression.

Although there is some overlap between items that define neuroticism and those that assess anxiety and

depression that may contribute to the correlation between them, particularly in cross-sectional studies, the strength of this association is unlikely to be merely artifactual (Lahey, 2009). Neuroticism is strongly linked, not just with anxiety and depression, but with

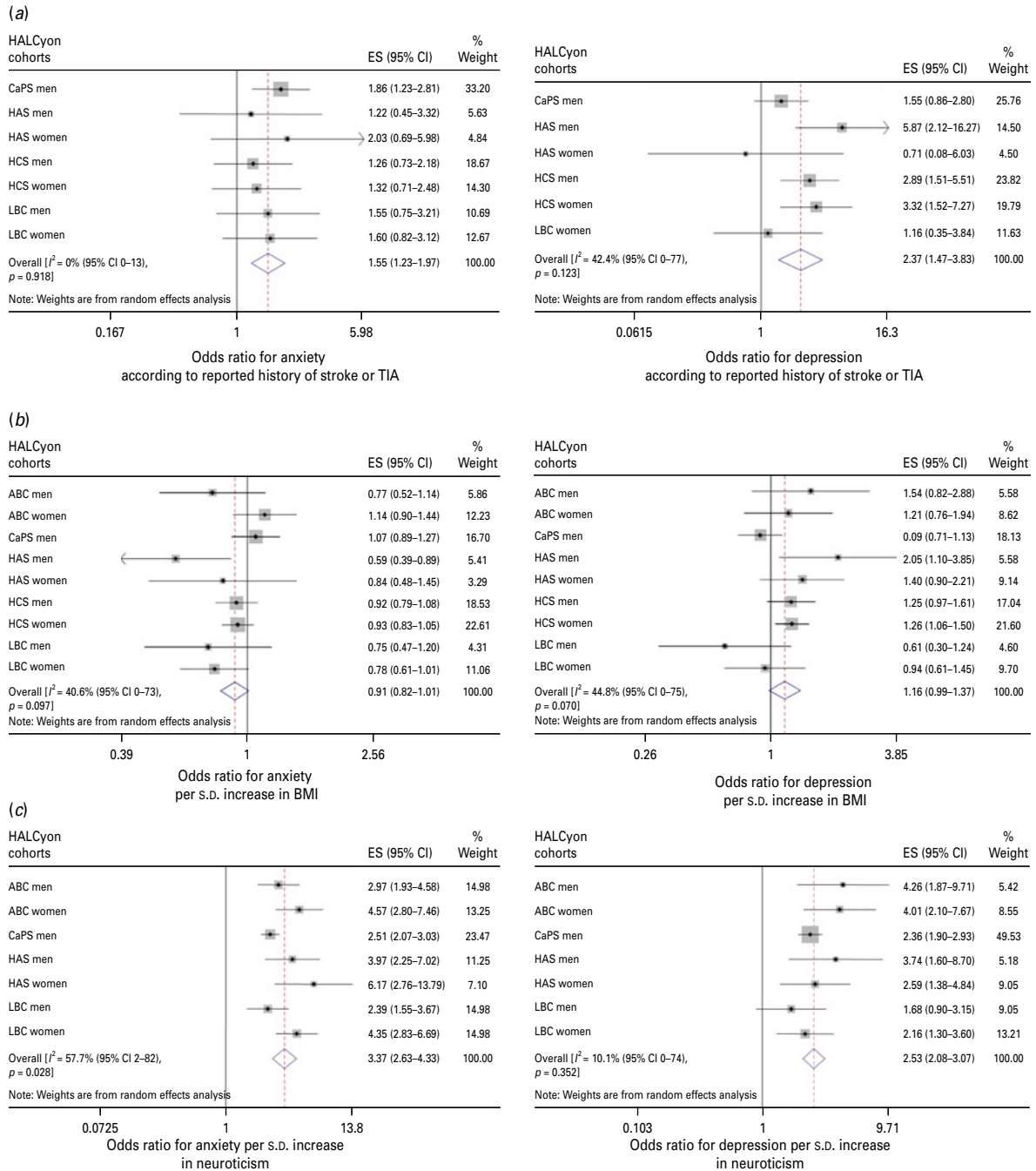


Fig. 5. Forest plots of meta-analyses of the relationships between (a) history of stroke or transient ischaemic attack (TIA), (b) body mass index (BMI) and (c) neuroticism and odds for anxiety or depression. HALCyon, Healthy Ageing across the Life Course; ES, effect size; CI, confidence interval; CaPS, Caerphilly Prospective Study; HAS, Hertfordshire Ageing Study; HCS, Hertfordshire Cohort Study; LBC, The Lothian Birth Cohort 1921; s.d., standard deviation; ABC, Aberdeen Birth Cohort 1936.

a wide range of mental disorders (Malouff *et al.* 2005). One explanation for this is shared genetic influences. There is a substantial overlap between the genetic factors that influence neuroticism and those that influence internalising disorders such as anxiety and depression (Hettema *et al.* 2006). While a genetic tendency towards neuroticism underlies vulnerability

to both anxiety and depression, environmental factors appear to trigger the phenotypes (de Beurs *et al.* 2001).

Cognition

The observation that higher peak prior intelligence was associated overall with a reduced likelihood of

anxiety or depression is consistent with findings in younger adults linking higher cognitive ability in childhood with lower later risk of psychological distress (Gale *et al.* 2009). Whether this is due to shared aetiology or greater ability to cope with stressors is unclear. At older ages, fluid intelligence reflects not just peak ability earlier in life but also the cumulative effects of disease processes. Higher fluid intelligence was associated overall with a lower likelihood of anxiety or depression, after adjustment for peak prior cognition, suggesting that decline in mental abilities may be accompanied by symptoms of psychological distress, though these latter relationships were weakened by adjustment for other potentially confounding or mediating factors, including measures of chronic illness, physical function and disability. The cross-sectional design of our study does not allow us to establish whether the experience of cognitive decline leads to depression or anxiety. In a Dutch study of community-dwelling older people, no association was found between low Mini-Mental State scores (<24) and incident depression as measured by the Center for Epidemiologic Studies Depression Scale (de Beurs *et al.* 2001). Also, a decline of >3 points in Mini-Mental State scores did not predict change in HADS anxiety scores. However, their analysis may have lacked statistical power because of low numbers with this degree of cognitive decline (de Beurs *et al.* 2000).

Physical function

Only a few studies have examined the relationship between poorer performance on physical function tests and anxiety or depression in older people. In cross-sectional analyses in two US cohorts, no association was found between the presence of anxiety symptoms and physical performance (Mehta *et al.* 2007), but depressive symptoms were more common in people with poorer performance (Penninx *et al.* 1998). In our meta-analyses, we found that the overall odds of anxiety or depression were markedly lower in people with better physical performance, as assessed by grip strength or standing balance. These associations changed little after adjustment for potential confounding or mediating variables. However, the direction of effect is uncertain. Longitudinal studies suggest that higher levels of depression (Penninx *et al.* 1998) – though not of anxiety (Mehta *et al.* 2007) – are predictive of decline in physical function. Whether this association is bi-directional is unclear.

Disability

Our finding of an overall association between greater disability, as measured by the Townsend Index, and

likelihood of depression or anxiety is consistent with observations in the EURODEP study (Braam *et al.* 2005) and the Longitudinal Ageing Study Amsterdam (Beekman *et al.* 2000). Here too, there is evidence, particularly for depression, that the association may be bi-directional. Onset or increments in disability are predictive of increases in depressive symptoms (Yang & George, 2005) and depression and anxiety are risk factors for disability (Lenze *et al.* 2001).

Physical illness

Our findings that older people with a history of heart attack, stroke or TIA, or diabetes, or those who are taking more medications, are more likely to have high scores for anxiety or depression are in keeping with previous observations linking vascular disease with higher rates of depression in later life (Baldwin & O'Brien, 2002) and with results of the National Institutes of Health Cognitive and Emotional Health Project (Hendrie *et al.* 2006). This review identified that multiple chronic illnesses and some specific illnesses were linked with poor emotional outcomes in older people (Hendrie *et al.* 2006), though the number of publications on which some of these associations were based was small, and nearly all the studies included related solely to depression. Our meta-analyses suggest that some specific illnesses, and being on more medications, may be linked with anxiety as well as depression. Multivariable adjustment for other factors, particularly physical function and Townsend Disability Index, severely attenuated the associations between specific illnesses and risk of anxiety and depression, but as these latter factors might well mediate the associations, and numbers of cases with these illnesses were often small, this is perhaps unsurprising. Here too, though, the direction of causality is not clear. The implications and effects on capability of having a heart attack, stroke, diabetes or multiple chronic illnesses may lead to anxiety or depression, but findings in one of these cohorts that depression is associated with diabetes even in those who are unaware that they have the condition (Holt *et al.* 2009) add to the evidence that depression or anxiety may be risk factors for subsequent disease (Wulsin *et al.* 1999; Brenes *et al.* 2007).

BMI

Some previous studies have suggested that the link between being obese and symptoms of depression may be stronger in women than in men (Mather *et al.* 2009). Here we found a borderline significant association between increasing BMI and greater likelihood of depression that was present in both men and

women in age-adjusted analyses, though this was attenuated after multivariable adjustment, particularly for physical function and indicators of poor health. Again, the direction of the relationship between higher BMI and depression is uncertain. Recent evidence using repeated measures suggests that depression increases the risk of future obesity, rather than vice versa (Kivimäki *et al.* 2009), though this association may vary by sex and age at onset of symptoms (Gaysina *et al.* 2011). We found some indication that higher BMI was associated with lower likelihood of anxiety, an association that was strengthened by multivariable adjustment. A similar association has been reported in an earlier study using the HADS, though other evidence suggests that the nature of the relationship between BMI and anxiety may vary with different types of anxiety disorder (Rivenes *et al.* 2009).

Socio-economic status

Many studies have found associations between higher socio-economic status and lower risk of anxiety and depression. Here we found that the risk of anxiety and depression was lower in people who had a lower social class background either in childhood or currently, but these associations were severely attenuated by adjustment for other factors, such as cognitive and physical function, neuroticism, level of disability and chronic illness. Lower social class in childhood has been previously linked with greater neuroticism in adult life (Bosma *et al.* 1999).

Birth weight

Several studies have shown associations between lower birth weight and increased susceptibility to symptoms of depression or anxiety (Gale & Martyn, 2004; Alati *et al.* 2007; Colman *et al.* 2007; Bohnert & Breslau, 2008), but only one of these studies was in older people (Thompson *et al.* 2001). Here we found no overall association between lower birth weight and either anxiety or depression in later life. Other studies too have found no association (Osler *et al.* 2005; Inskip *et al.* 2008), possibly because birth weight is a crude marker of fetal neurodevelopment.

Strengths and weaknesses

The main strength of our study is the availability of data from five cohorts, allowing us to explore the effect of a range of potential risk factors from both early and later life on risk of symptoms of depression or anxiety in older people. It also has some weaknesses. First, the majority of our analyses were based on cross-sectional data, making it hard to establish the direction of effect for some associations. Second, the prevalence of

'probable' depression – HADS depression subscale (HADS-D) scores ≥ 11 – in these cohorts was low. Comparing prevalence between studies is complicated by methodological differences in assessment (Beekman *et al.* 1999). Whether other studies that used the HADS in community-based older people had a similarly low prevalence of HADS-D scores ≥ 11 is unclear, but mean HADS-D scores among our cohorts were very similar to those found in one such study of people aged 70–74 years (Jacka *et al.* 2009). The presence of responder and survivor biases is unsurprising in longitudinal studies. However, if there is a bias towards less depression among our respondents, this would only be a matter of concern – and have implications for generalizability – if the relationships between risk factors and depression differed systematically between those who took part and those who did not; this seems unlikely. Third, our analyses were constrained by the availability of comparable data in the cohorts. We were unable to examine some potentially important factors, such as physical activity. Fourth, the multivariable-adjusted estimates need to be interpreted with caution. Although we identified potential confounding or mediating factors for each risk factor from among the variables included here, lack of data on some factors in some cohorts – such as cognition and neuroticism in the HCS – means that estimates from each cohort could not always be adjusted for the same variables. Finally, we were not able in these meta-analyses to explore whether the simultaneous presence of different risk factors has an additive or interactive effect on risk of anxiety or depression.

Interpretation

While declining function and poorer health might increase the risk of anxiety or depression in vulnerable individuals, another, and not incompatible, explanation might be that dysregulation of the hypothalamic–pituitary–adrenal axis and the accompanying physiological and behavioural responses to stress can have an adverse effect on many body systems including the brain, and may contribute to biological ageing (McEwen, 2006). Another explanation linked to biological ageing could be oxidative stress (Bokov *et al.* 2004; Ng *et al.* 2008). These explanations could help to account not just for the associations found here between symptoms of anxiety or depression and cardiovascular disease and diabetes, but also those with declining physical or cognitive function.

In summary, we used data from several cohorts of older men and women to examine the relative importance of factors from early and later life for risk of

anxiety and depression. We found no indication in these data that impaired fetal growth had a long-term effect on susceptibility to psychological distress. Being brought up in socio-economic disadvantage did appear to increase risk, particularly of depression, but this relationship was attenuated after adjustment for possible confounding or mediating factors. By contrast, levels of anxiety and depression in older people were closely connected to personality, physical function, level of disability, prior and current cognitive capability, and state of health.

Acknowledgements

The HALCyon collaborative research programme is funded by the New Dynamics of Ageing (NDA) programme, a joint 7-year initiative of five UK research councils. Follow-up of the ABC was supported by L.J.W. receiving a Wellcome Trust career development award. The CaPS was conducted by the former Medical Research Council (MRC) Epidemiology Unit (South Wales), and was funded by the MRC and the Alzheimer's Society; the Department of Social Medicine, University of Bristol now maintains the data archive. The HCS was funded by the MRC, the British Heart Foundation, Arthritis Research Campaign, the National Osteoporosis Society, Wellcome Trust and the University of Southampton. The HAS was funded by the MRC and the University of Southampton. The LBC was funded by the Biotechnology and Biological Sciences Research Council and the Chief Scientist Office of the Scottish Executive Health Department. The Centre for Cognitive Ageing and Cognitive Epidemiology is funded by the Biotechnology Sciences Research Council, the Engineering and Physical Sciences Research Council, the Economic and Social Research Council, the MRC and the University of Edinburgh as part of the cross-council Lifelong Health and Wellbeing initiative.

Declaration of Interest

None.

References

Alati R, Lawlor DA, Mamun AA, Williams GM, Najman JM, O'Callaghan M, Bor W (2007). Is there a fetal origin of depression? Evidence from the Mater University Study of Pregnancy and its outcomes. *American Journal of Epidemiology* **165**, 575–582.

Anonymous (1984). Caerphilly and Speedwell collaborative heart disease studies. The Caerphilly and Speedwell Collaborative Group. *Journal of Epidemiology and Community Health* **38**, 259–262.

Baldwin RC, O'Brien J (2002). Vascular basis of late-onset depressive disorder. *British Journal of Psychiatry* **180**, 157–160.

Beekman AT, Copeland JR, Prince MJ (1999). Review of community prevalence of depression in later life. *British Journal of Psychiatry* **174**, 307–311.

Beekman ATF, de Beurs E, van Balkom AJ, Deeg DJH, van Dyck R, van Tilburg W (2000). Anxiety and depression in later life: co-occurrence and communality of risk factors. *American Journal of Psychiatry* **157**, 89–95.

Beekman ATF, Penninx BWJH, Deeg DJH, Ormel J, Braam AW, van Tilburg W (1997). Depression and physical health in later life: results from the Longitudinal Aging Study Amsterdam (LASA). *Journal of Affective Disorders* **46**, 219–231.

Bohnert KM, Breslau N (2008). Stability of psychiatric outcomes of low birth weight: a longitudinal investigation. *Archives of General Psychiatry* **65**, 1080–1086.

Bokov A, Chaudhuri A, Richardson A (2004). The role of oxidative damage and stress in aging. *Mechanisms of Ageing and Development* **125**, 811–826.

Bosma H, van de Mheen HD, Mackenbach JP (1999). Social class in childhood and general health in adulthood: questionnaire study of contribution of psychological attributes. *British Medical Journal* **318**, 18–22.

Braam AW, Prince MJ, Beekman AT, Delespaul P, Dewey ME, Geerlings SW, Kivela S-L, Lawlor BA, Magnusson H, Meller I, Peres K, Reischies FM, Roelands M, Schoevers RA, Saz P, Skoog I, Turrina C, Versporten A, Copeland JR (2005). Physical health and depressive symptoms in older Europeans. Results from EURODEP. *British Journal of Psychiatry* **187**, 35–42.

Brenes GA, Kritchevsky SB, Mehta KM, Yaffe K, Simonsick EM, Ayonayon HN, Rosano C, Rubin SM, Satterfield S, Penninx BW (2007). Scared to death: results from the Health, Aging, and Body Composition study. *American Journal of Geriatric Psychiatry* **15**, 262–265.

Briggs RC, Gossman MR, Birch R, Drews JE, Shaddeau SA (1989). Balance performance among noninstitutionalized elderly women. *Physical Therapy* **69**, 748–756.

Bryant C, Jackson H, Ames D (2008). The prevalence of anxiety in older adults: methodological issues and a review of the literature. *Journal of Affective Disorders* **109**, 233–250.

Cole MG, Dendukuri N (2003). Risk factors for depression among elderly community subjects: a systematic review and meta-analysis. *American Journal of Psychiatry* **160**, 1147–1156.

Colman I, Ploubidis GB, Wadsworth ME, Jones PB, Croudace TJ (2007). A longitudinal typology of symptoms of depression and anxiety over the life course. *Biological Psychiatry* **62**, 1265–1271.

Costa PT, McCrae RR (1992). *NEO PI-R Professional Manual*. Psychological Assessment Resources: Odessa, FL.

Crawford JR, Deary IJ, Starr J, Whalley LJ (2001). The NART as an index of prior intellectual functioning: a retrospective validity study covering a 66-year interval. *Psychological Medicine* **31**, 451–458.

de Beurs E, Beekman A, Geerlings S, Deeg DJ, van Dyck R, van Tilburg W (2001). On becoming depressed or anxious

- in late life: similar vulnerability factors but different effects of stressful life events. *British Journal of Psychiatry* **179**, 426–431.
- de Beurs E, Beekman AT, Deeg DJ, van Dyck R, van Tilburg W** (2000). Predictors of change in anxiety symptoms of older persons: results from the Longitudinal Aging Study Amsterdam. *Psychological Medicine* **30**, 515–527.
- Deary IJ, Whiteman MC, Starr JM, Whalley LJ, Fox HC** (2004). The impact of childhood intelligence on later life: following up the Scottish Mental Surveys of 1932 and 1947. *Journal of Personality and Social Psychology* **86**, 130–147.
- Deeks JJ, Altman DG, Bradburn MJ** (2001). Statistical methods for examining heterogeneity and combining results from several studies in meta-analysis. In *Systematic Reviews in Health Care. Meta-analysis in Context* (ed. M. Egger, G. Davey Smith and D. G. Altman), pp. 285–312. BMJ Books: London.
- Dufouil C, Fuhrer R, Dartigues JF, Alperovitch A** (1996). Longitudinal analysis of the association between depressive symptomatology and cognitive deterioration. *American Journal of Epidemiology* **144**, 634–641.
- Gale CR, Allerhand M, Sayer AA, Cooper C, Dennison EM, Starr JM, Ben-Shlomo Y, Gallacher JE, Kuh D, Deary IJ** (2010). The structure of the Hospital Anxiety and Depression Scale in four cohorts of community-based, healthy older people: the HALCyon program. *International Psychogeriatrics* **22**, 559–571.
- Gale CR, Deary IJ, Boyle SH, Barefoot J, Mortensen LH, Batty GD** (2008). Cognitive ability in early adulthood and risk of five specific psychiatric disorders in mid life: the Vietnam Experience Study. *Archives of General Psychiatry* **65**, 1410–1418.
- Gale CR, Hatch SL, Batty GD, Deary IJ** (2009). Intelligence in childhood and risk of psychological distress in adulthood: the 1958 National Child Development Survey and the 1970 British Cohort Study. *Intelligence* **37**, 592–599.
- Gale CR, Martyn CN** (2004). Birth weight and later risk of depression in a national birth cohort. *British Journal of Psychiatry* **184**, 28–33.
- Gallo JJ, Lebowitz BD** (1999). The epidemiology of common late-life mental disorders in the community: themes for the new century. *Psychiatric Services* **50**, 1158–1166.
- Gaysina D, Hotopf M, Richards M, Colman I, Kuh D, Hardy R** (2011). Symptoms of depression and anxiety and change in body mass index from adolescence to adulthood: results from a British birth cohort. *Psychological Medicine* **41**, 175–184.
- Heim A** (1968). *The AH4 test*. NFER-Nelson: Windsor.
- Hendrie HC, Albert MS, Butters MA, Gao S, Knopman DS, Launer LJ, Yaffe K, Cuthbert BN, Edwards E, Wagster MV** (2006). The NIH Cognitive and Emotional Health Project. Report of the Critical Evaluation Study Committee. *Alzheimer's and Dementia* **2**, 12–32.
- Hettema JM, Neale MC, Myers JM, Prescott CA, Kendler KS** (2006). A population-based twin study of the relationship between neuroticism and internalizing disorders. *American Journal of Psychiatry* **163**, 857–864.
- Higgins JP, Thompson SG, Deeks JJ, Altman DG** (2003). Measuring inconsistency in meta-analyses. *British Medical Journal* **327**, 557–560.
- Holt RI, Phillips DI, Jameson KA, Cooper C, Dennison EM, Peveler RC** (2009). The relationship between depression and diabetes mellitus: findings from the Hertfordshire Cohort Study. *Diabetic Medicine* **26**, 641–648.
- Inskip HM, Dunn N, Godfrey KM, Cooper C, Kendrick T** (2008). Is birth weight associated with risk of depressive symptoms in young women? Evidence from the Southampton Women's Survey. *American Journal of Epidemiology* **167**, 164–168.
- Jacka FN, Overland S, Stewart R, Tell GS, Bjelland I, Mykletun A** (2009). Association between magnesium intake and depression and anxiety in community-dwelling adults: the Hordaland Health Study. *Australian and New Zealand Journal of Psychiatry* **43**, 45–52.
- Kennedy GJ, Kelman HR, Wisniewsky W, Metz H, Bijur P** (1989). Hierarchy of characteristics associated with depressive symptoms in an urban elderly sample. *American Journal of Psychiatry* **146**, 220–225.
- Kivimäki M, Lawlor DA, Singh-Manoux A, Batty GD, Ferrie JE, Shipley MJ, Nabi H, Sabia S, Marmot MG, Jokela M** (2009). Common mental disorder and obesity: insight from four repeat measures over 19 years: prospective Whitehall II cohort study. *British Medical Journal* **339**, b3765.
- Lahey BB** (2009). Public health significance of neuroticism. *American Psychologist* **64**, 241–256.
- Lenze EJ, Rogers JC, Martire LM, Mulsant BH, Rollman BL, Dew MA, Schulz R, Reynolds CF** (2001). The association of late-life depression and anxiety with physical disability: a review of the literature and prospectus for future research. *American Journal of Geriatric Psychiatry* **9**, 113–135.
- Malouff JM, Thorsteinsson EB, Schutte NS** (2005). The relationship between the five-factor model of personality and symptoms of clinical disorders: a meta-analysis. *Journal of Psychopathology and Behavioral Assessment* **27**, 101–114.
- Martin LT, Kubzansky LD, Lewinn KZ, Lipsitt LP, Satz P, Buka SL** (2007). Childhood cognitive performance and risk of generalized anxiety disorder. *International Journal of Epidemiology* **36**, 769–775.
- Mather AA, Cox BJ, Enns MW, Sareen J** (2009). Associations of obesity with psychiatric disorders and suicidal behaviors in a nationally representative sample. *Journal of Psychosomatic Research* **66**, 277–285.
- McEwen BS** (2006). Protective and damaging effects of stress mediators: the role of the brain. *Dialogues in Clinical Neuroscience* **8**, 367–381.
- Mehta KM, Simonsick EM, Penninx BW, Schulz R, Rubin SM, Satterfield S, Yaffe K** (2003). Prevalence and correlates of anxiety symptoms in well-functioning older adults: findings from the Health, Aging and Body Composition Study. *Journal of the American Geriatrics Society* **51**, 499–504.
- Mehta KM, Yaffe K, Brenes GA, Newman AB, Shorr RI, Simonsick EM, Ayonayon HN, Rubin SM, Covinsky KE** (2007). Anxiety symptoms and decline in physical function over 5 years in the Health, Aging and Body Composition Study. *Journal of the American Geriatrics Society* **55**, 265–270.
- Nelson HE, Willison JR** (1991). *National Adult Reading Test (NART)*, 2nd edn. NFER-Nelson: Windsor, UK.

- Ng F, Berk M, Dean O, Bush AI (2008). Oxidative stress in psychiatric disorders: evidence base and therapeutic implications. *International Journal of Neuropsychopharmacology* **11**, 851–876.
- OPCS (1990). *Standard Occupational Classification, Vol. 1 Structure and Definition of Major, Minor and Unit Groups*. HMSO: London.
- Osler M, Nordentoft M, Andersen AM (2005). Birth dimensions and risk of depression in adulthood: cohort study of Danish men born in 1953. *British Journal of Psychiatry* **186**, 400–403.
- Penninx BW, Guralnik J, Ferrucci L, Simonsick EM, Deeg DJ, Wallace RB (1998). Depressive symptoms and physical decline in community-dwelling older persons. *Journal of the American Medical Association* **279**, 1720–1726.
- Poulton R, Caspi A, Milne BJ, Thomson WM, Taylor A, Sears MR, Moffitt TE (2002). Association between children's experience of socioeconomic disadvantage and adult health: a life-course study. *Lancet* **360**, 1640–1645.
- Raven JC (1965). *Guide to Using the Mill Hill Vocabulary Scale with Progressive Matrices*. H. K. Lewis: London.
- Raven JC, Court JH, Raven J (1977). *Manual for Raven's Progressive Matrices and Vocabulary Scales*. H. K. Lewis: London.
- Rivenes AC, Harvey SB, Mykletun A (2009). The relationship between abdominal fat, obesity, and common mental disorders: results from the HUNT study. *Journal of Psychosomatic Research* **66**, 269–275.
- Schoevers RA, Beekman AT, Deeg DJ, Jonker C, van Tilburg W (2003). Comorbidity and risk-patterns of depression, generalised anxiety disorder and mixed anxiety-depression in later life: results from the AMSTEL study. *International Journal of Geriatric Psychiatry* **18**, 994–1001.
- Schoon I, Sacker A, Bartley M (2003). Socio-economic adversity and psychosocial adjustment: a developmental-contextual perspective. *Social Science and Medicine* **57**, 1001–1015.
- Spielberger CD, Gorsuch RL, Lushene PR, Vagg PR, Jacobs AG (1983). *Manual for the State-Trait Anxiety Inventory (Form Y)*. Consulting Psychologists Press Inc.: Palo Alto, CA.
- Syddall HE, Sayer AA, Dennison EM, Martin HJ, Barker DJ, Cooper C (2005). Cohort Profile: The Hertfordshire Cohort Study. *International Journal of Epidemiology* **34**, 1234–1242.
- Syddall HE, Simmonds SJ, Martin HJ, Watson C, Dennison EM, Cooper C, Sayer AA (2009). Cohort profile: The Hertfordshire Ageing Study (HAS). *International Journal of Epidemiology* **39**, 36–43.
- Thompson C, Syddall H, Rodin I, Osmond C, Barker DJ (2001). Birthweight and risk of depressive disorder in late life. *British Journal of Psychiatry* **179**, 450–455.
- Townsend P (1979). *Poverty in the United Kingdom*. Pelican: Harmondsworth.
- Vink D, Aartsen MJ, Schoevers RA (2008). Risk factors for anxiety and depression in the elderly: a review. *Journal of Affective Disorders* **106**, 29–44.
- Wulsin LR, Vaillant GE, Wells VE (1999). A systematic review of the mortality of depression. *Psychosomatic Medicine* **61**, 6–17.
- Yang Y, George LK (2005). Functional disability, disability transitions, and depressive symptoms in late life. *Journal of Aging and Health* **17**, 263–292.
- Zigmond AS, Snaith RP (1983). The Hospital Anxiety and Depression Scale. *Acta Psychiatrica Scandinavica* **67**, 361–370.