

University of Cardiff
School of History, Archaeology and Religion



*Cooking, space and the formation of social
identities in Neolithic Northern Greece:
evidence of thermal structure assemblages
from Avgi and Dispilio in Kastoria*

Evanthia Kalogiropoulou

Portfolio

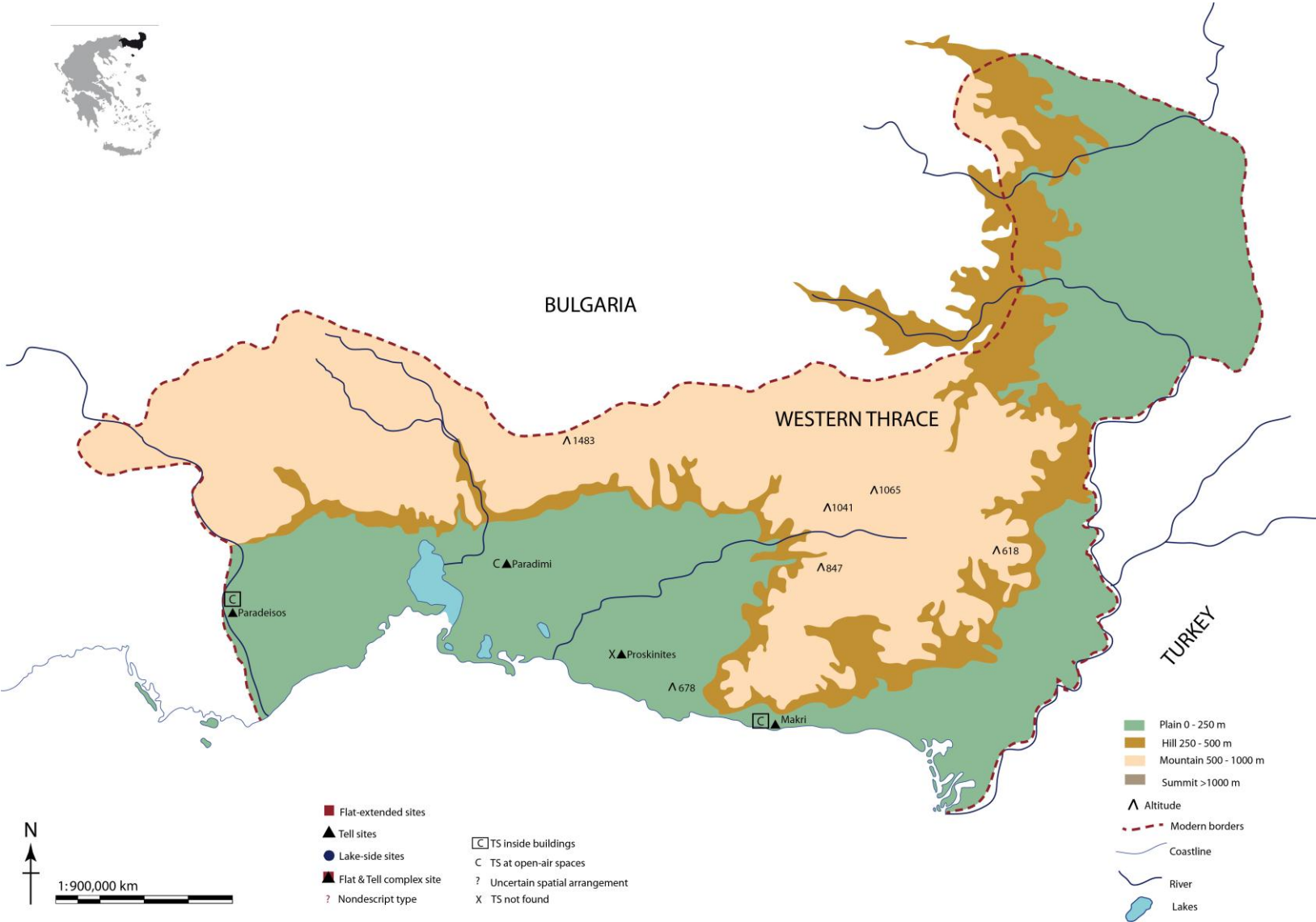
Submitted for the Degree of Doctor of Philosophy

May 2013

Map 3. 1 Map of Neolithic sites from Macedonia Greece mentioned in the text.



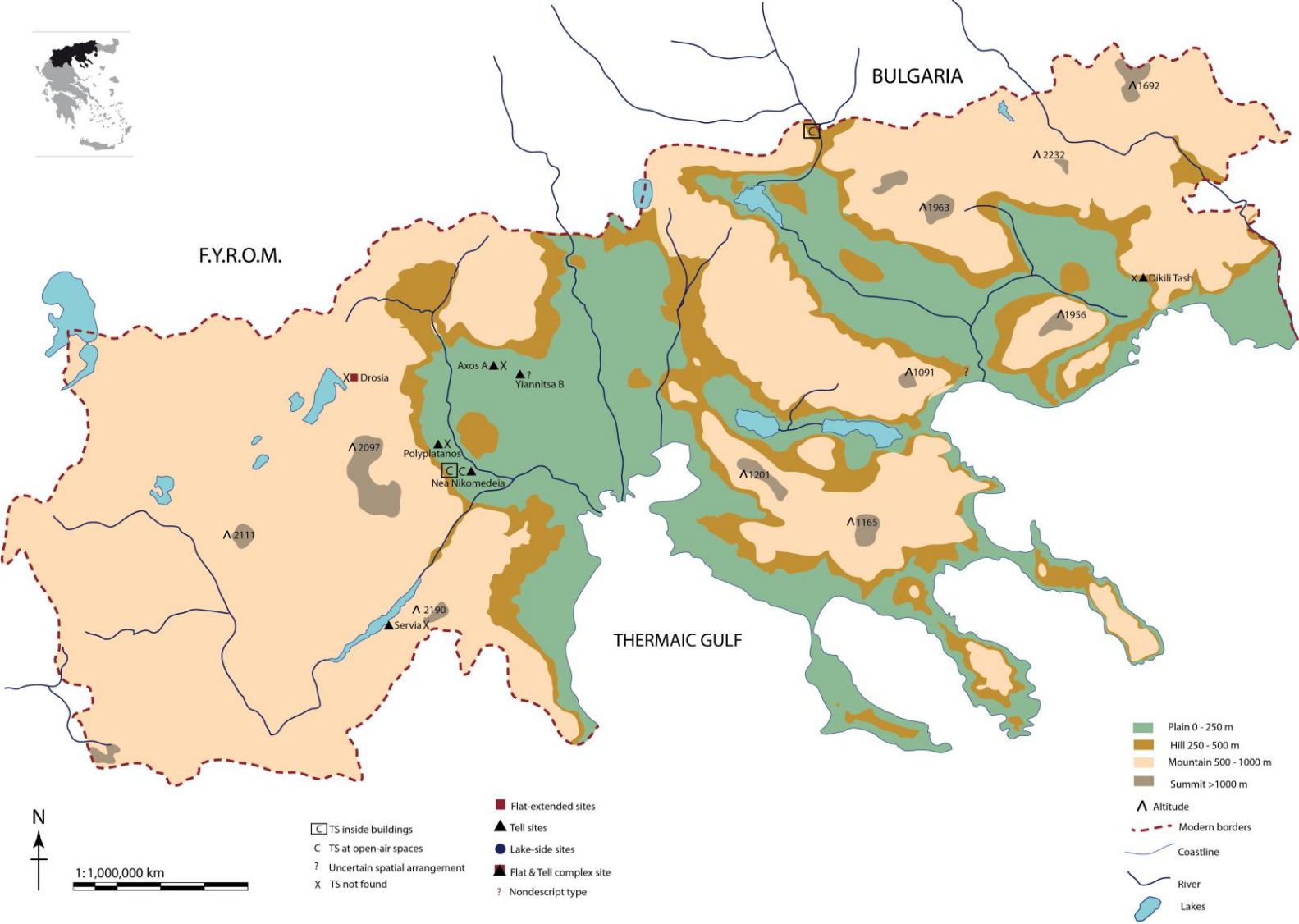
Map 3. 2 Map of Neolithic sites from Western Thrace Greece mentioned in the text.



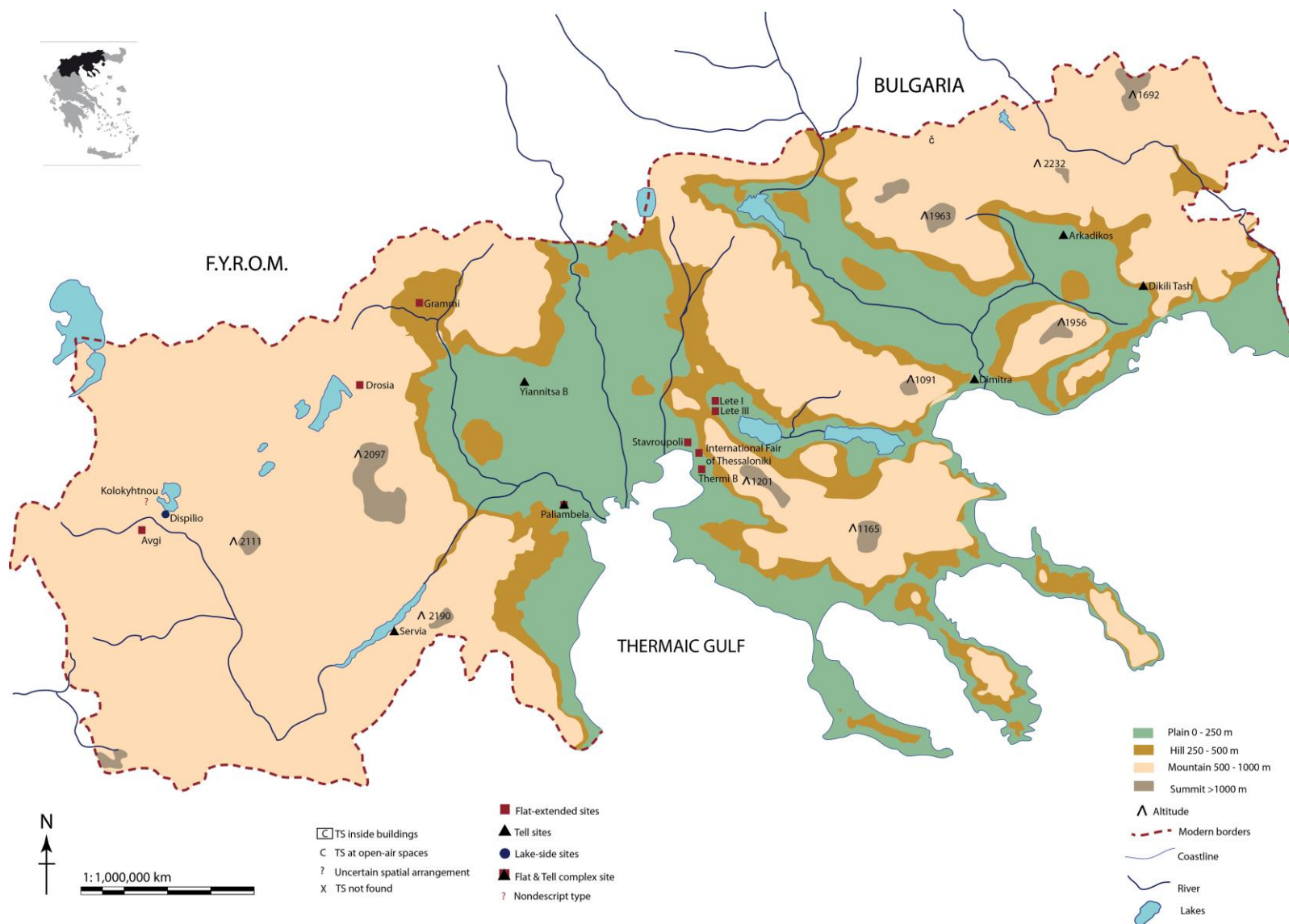
Map 7. 1 Macedonia in the EN period: geographical surroundings, settlement types and inter-site distribution of sites.



Map 7. 2 Macedonia in the EN period: intra-site spatial distribution of kitchen spaces.



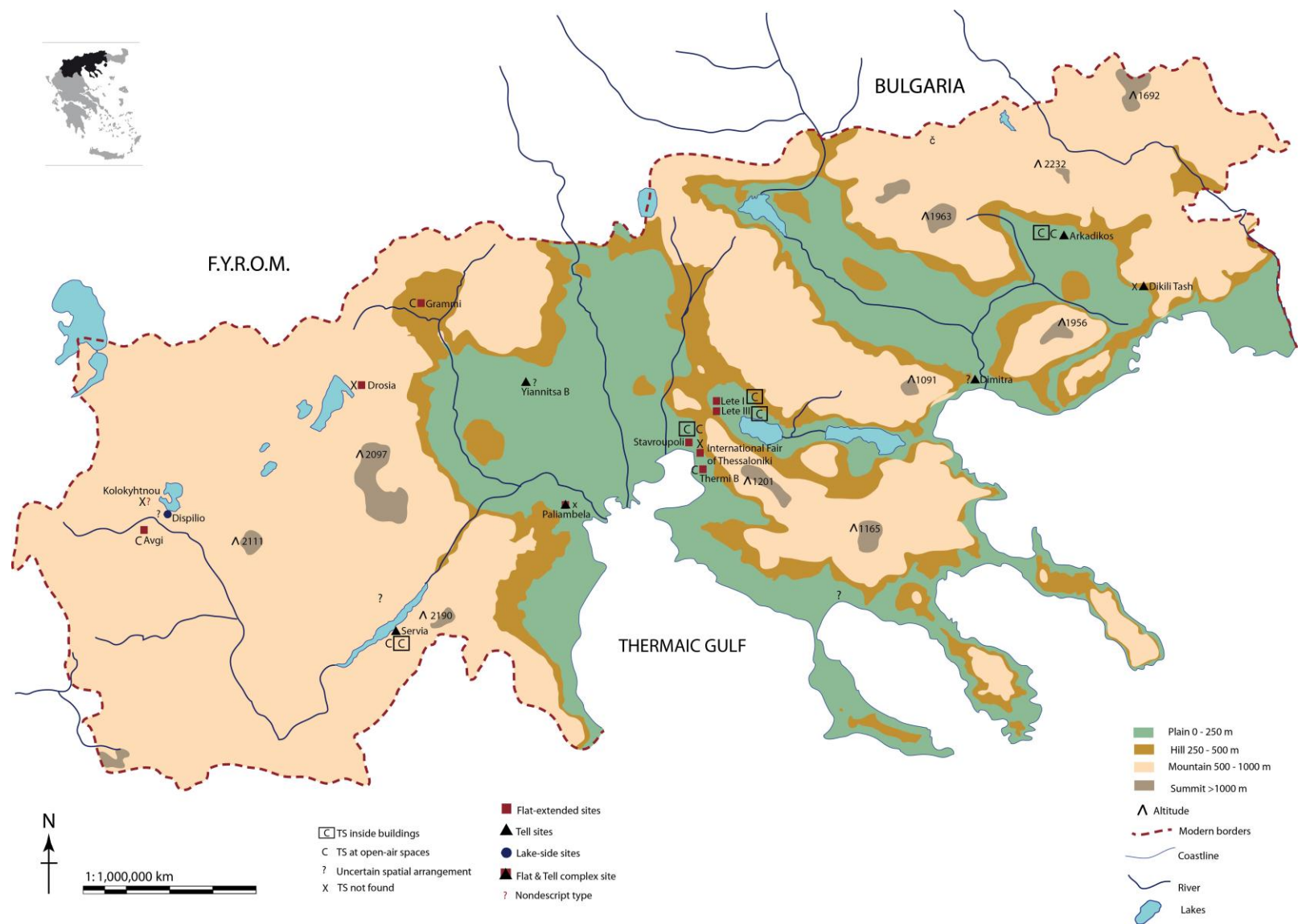
Map 7. 3 Macedonia in the MN period: geographical surroundings, settlement types and inter-site distribution of sites.



Map 7. 4 Western Thrace in the MN period: geographical surroundings, settlement types and inter-site distribution of sites.



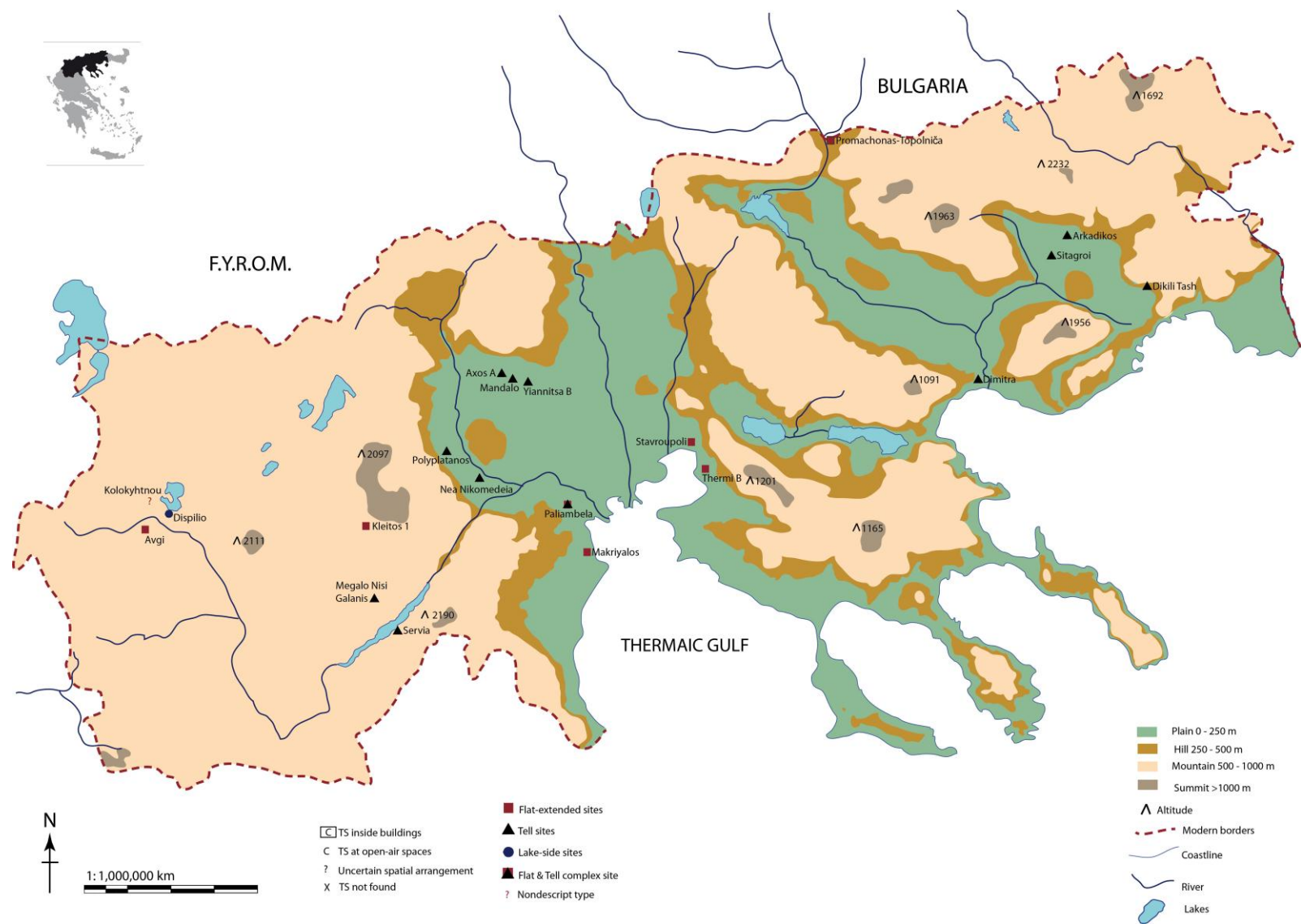
Map 7. 5 Macedonia in the MN period: intra-site spatial distribution of kitchen spaces.



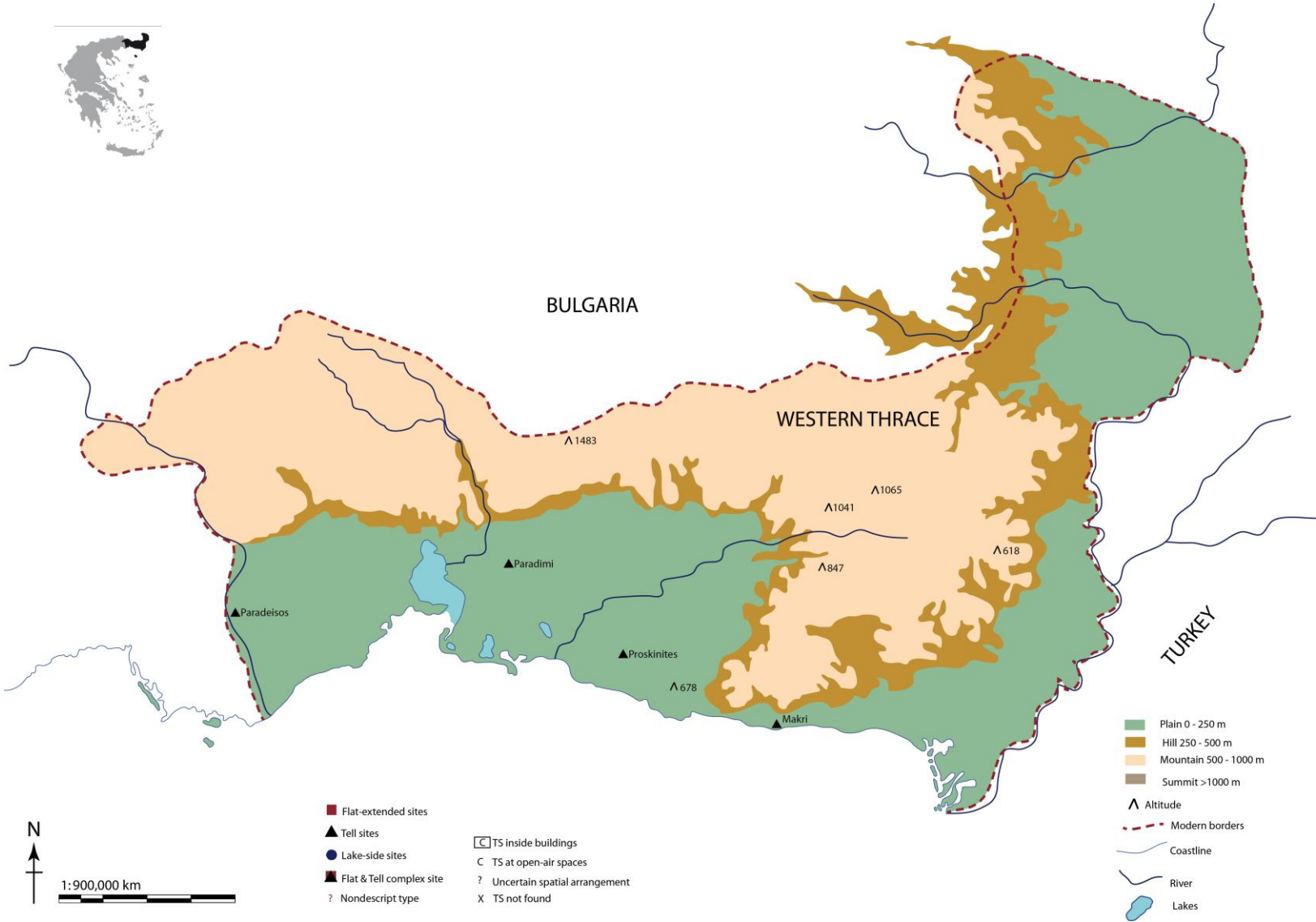
Map 7. 6 MN Western Thrace in the MN period: intra-site spatial distribution of kitchen spaces.



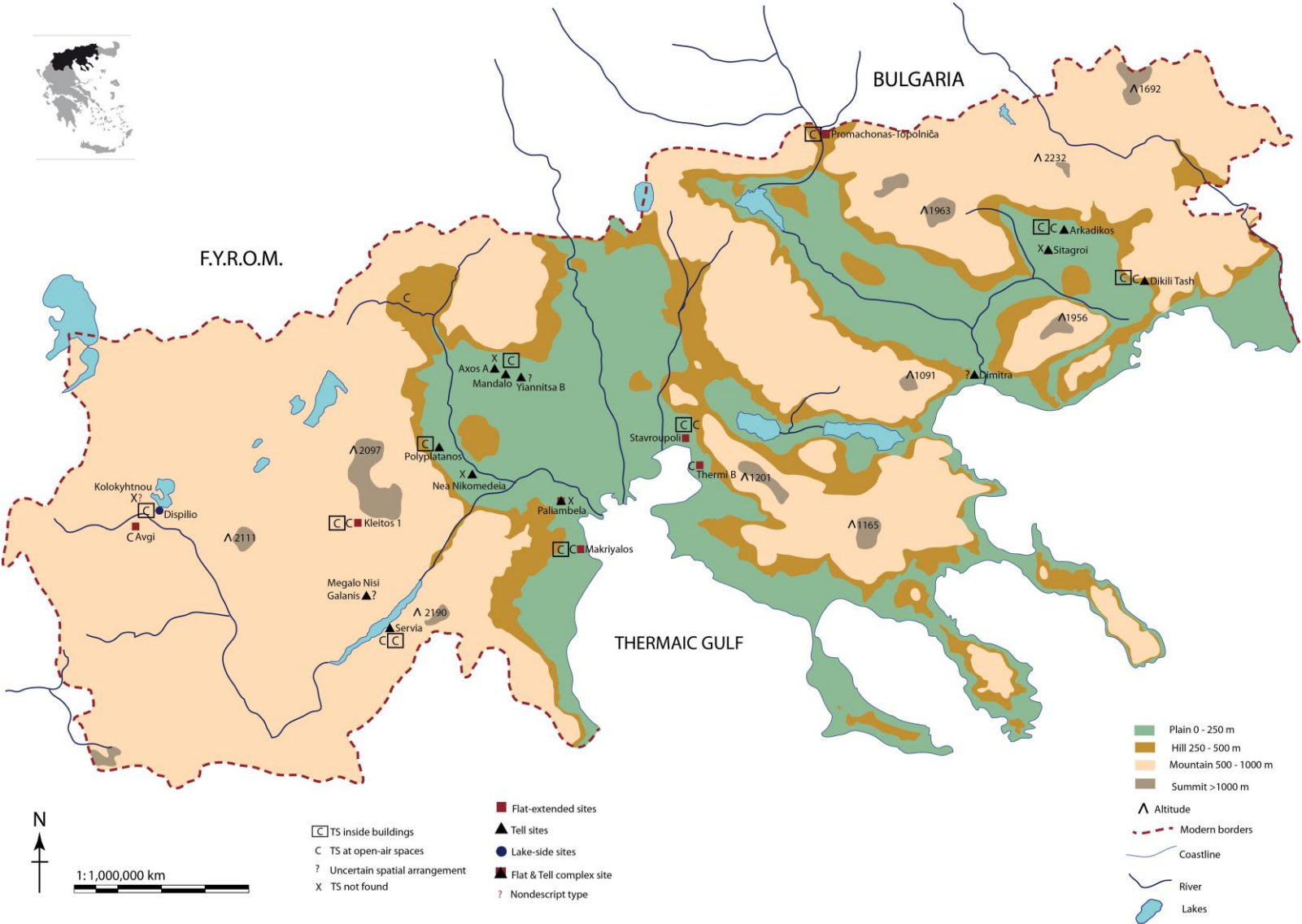
Map 7. 7 Macedonia in the LN period: geographical surroundings, settlement types and inter-site distribution of sites.



Map 7. 8 Western Thrace in the LN period: geographical surroundings, settlement types and inter-site distribution of sites.



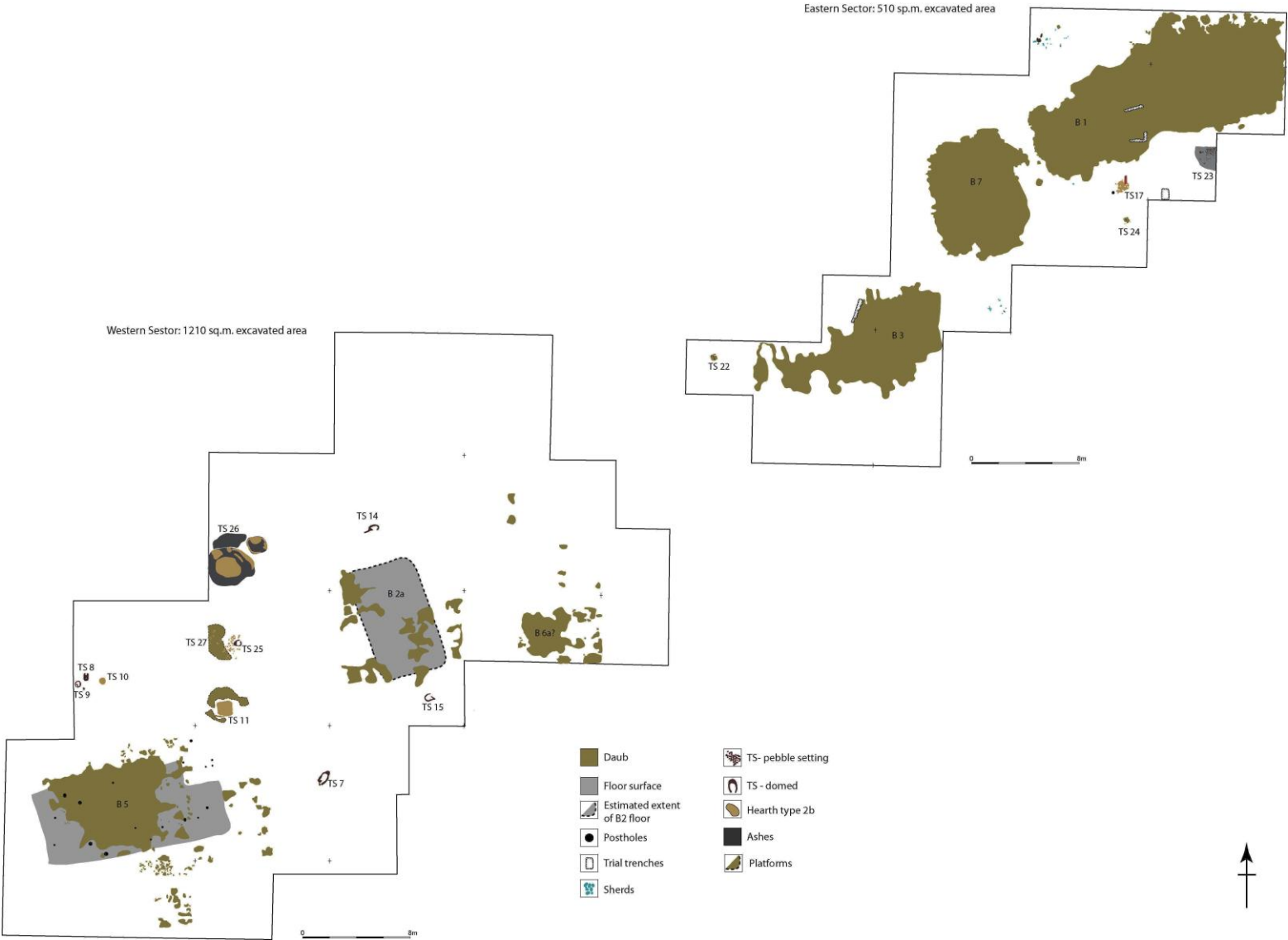
Map 7. 9 Macedonia in the LN period: intra-site spatial distribution of kitchen spaces.



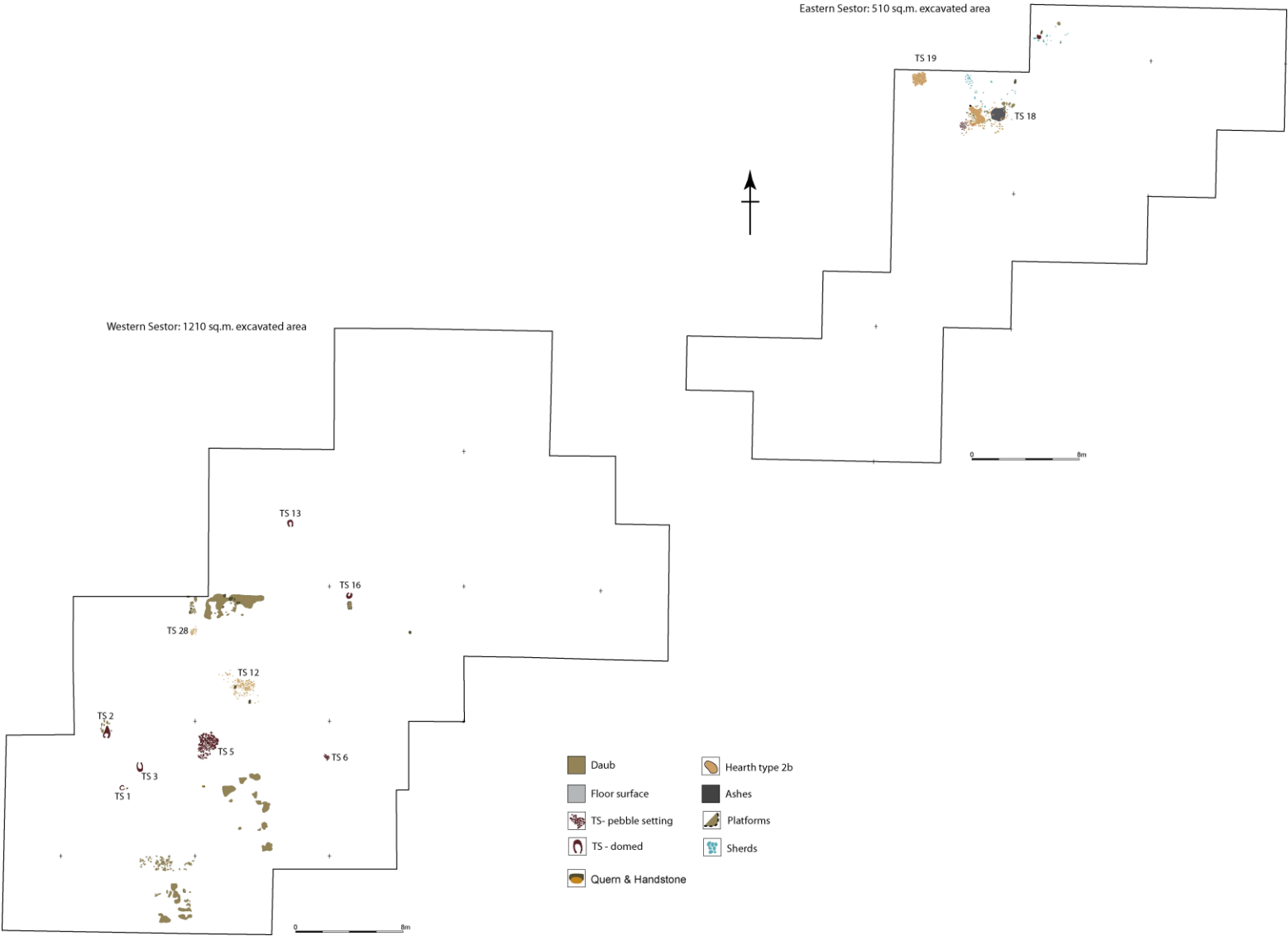
Map 7. 10 Western Thrace in the LN period: intra-site spatial distribution of kitchen spaces.



Plan 5. 2 Large-scale plan of the Avgi I habitation phase showing the burned daub building remains and the Thermal Structures unearthed on site.



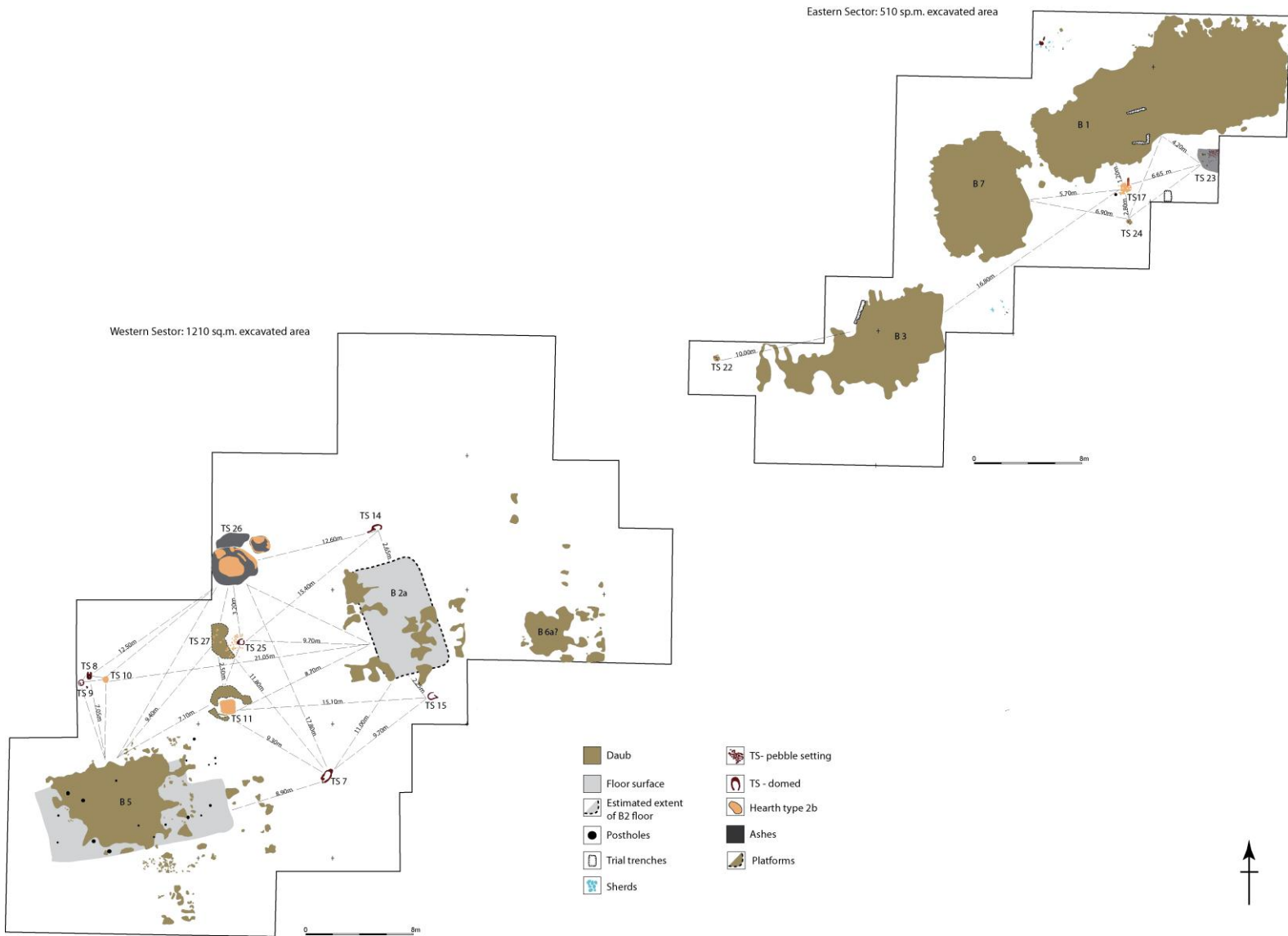
Plan 5. 3 Large-scale plan of the Avgi II habitation phase showing the Thermal Structures unearthed on site.



Plan 5. 4 Large-scale plan of the Avgi III habitation phase showing the foundation trenches and pits unearthed on site.



Plan 5.6 Large-scale plan that shows the distance among buildings and features at Avgi I and suggests possible movements and paths among them.



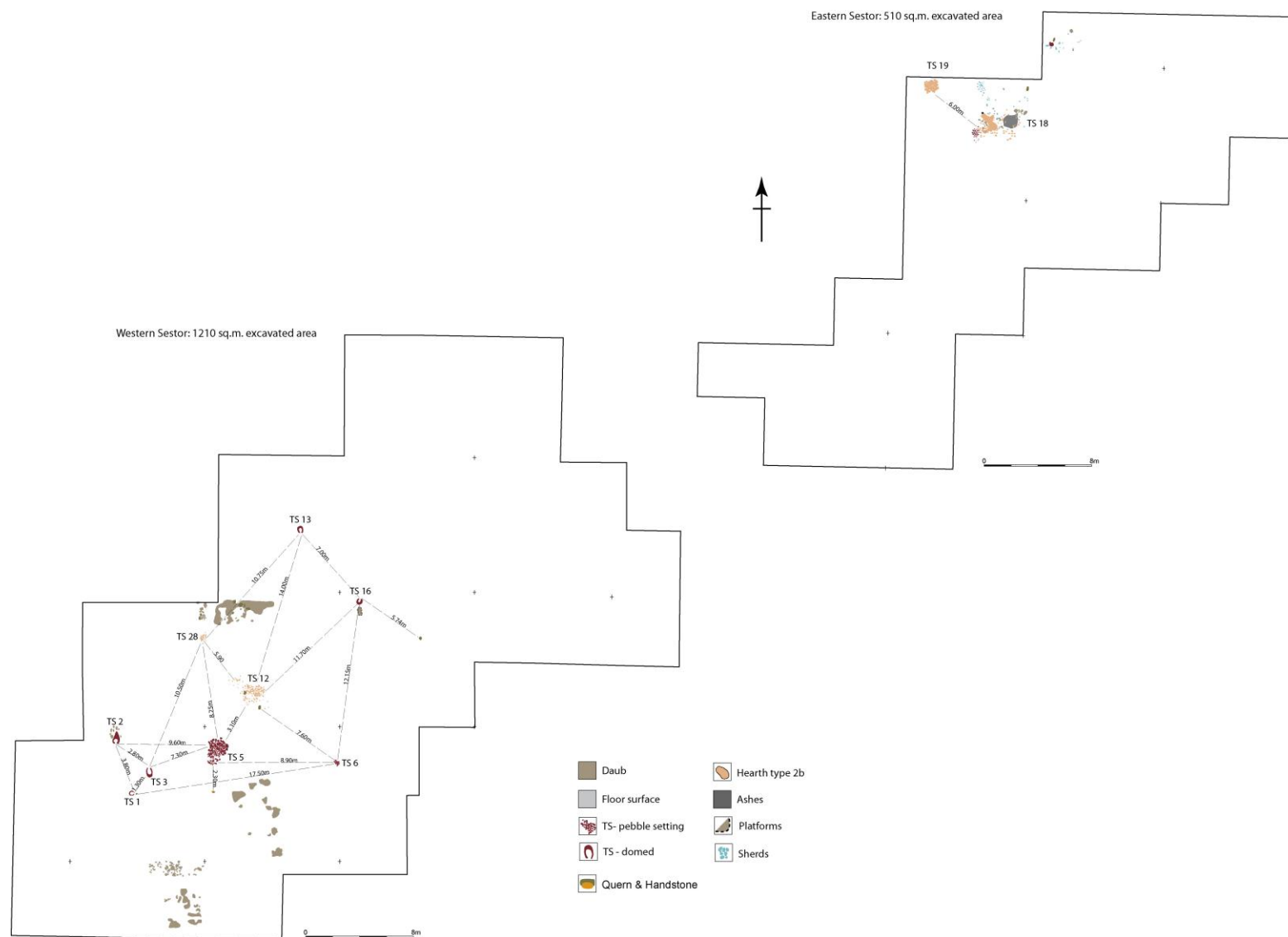
Western Sector: 1210 sq.m. excavated area

Eastern Sector: 510 sq.m. excavated area

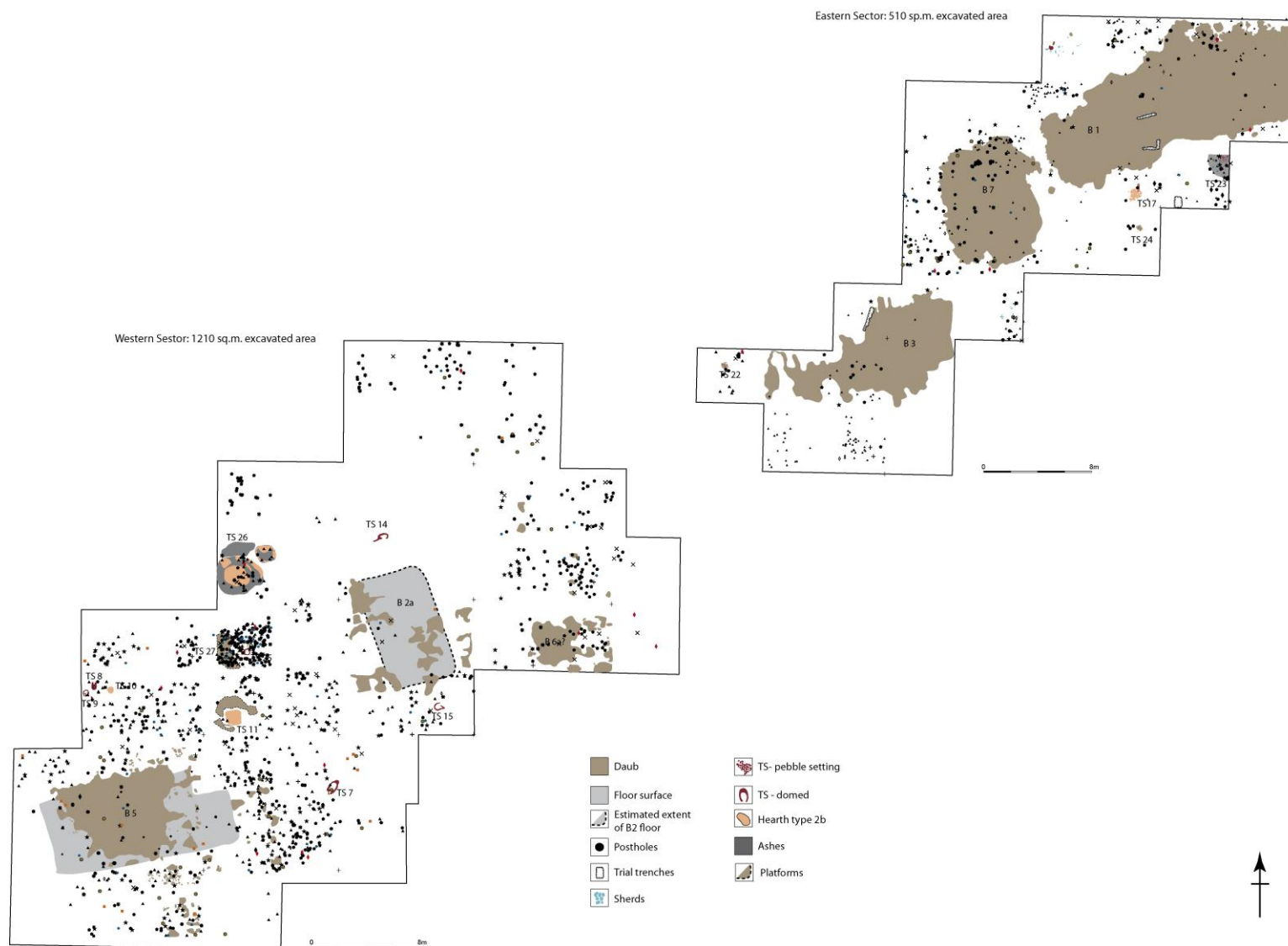
Legend:

- Daub
- Floor surface
- TS- pebble setting
- TS - domed
- Quern & Handstone
- Hearth type 2b
- Ashes
- Platforms
- Sherds

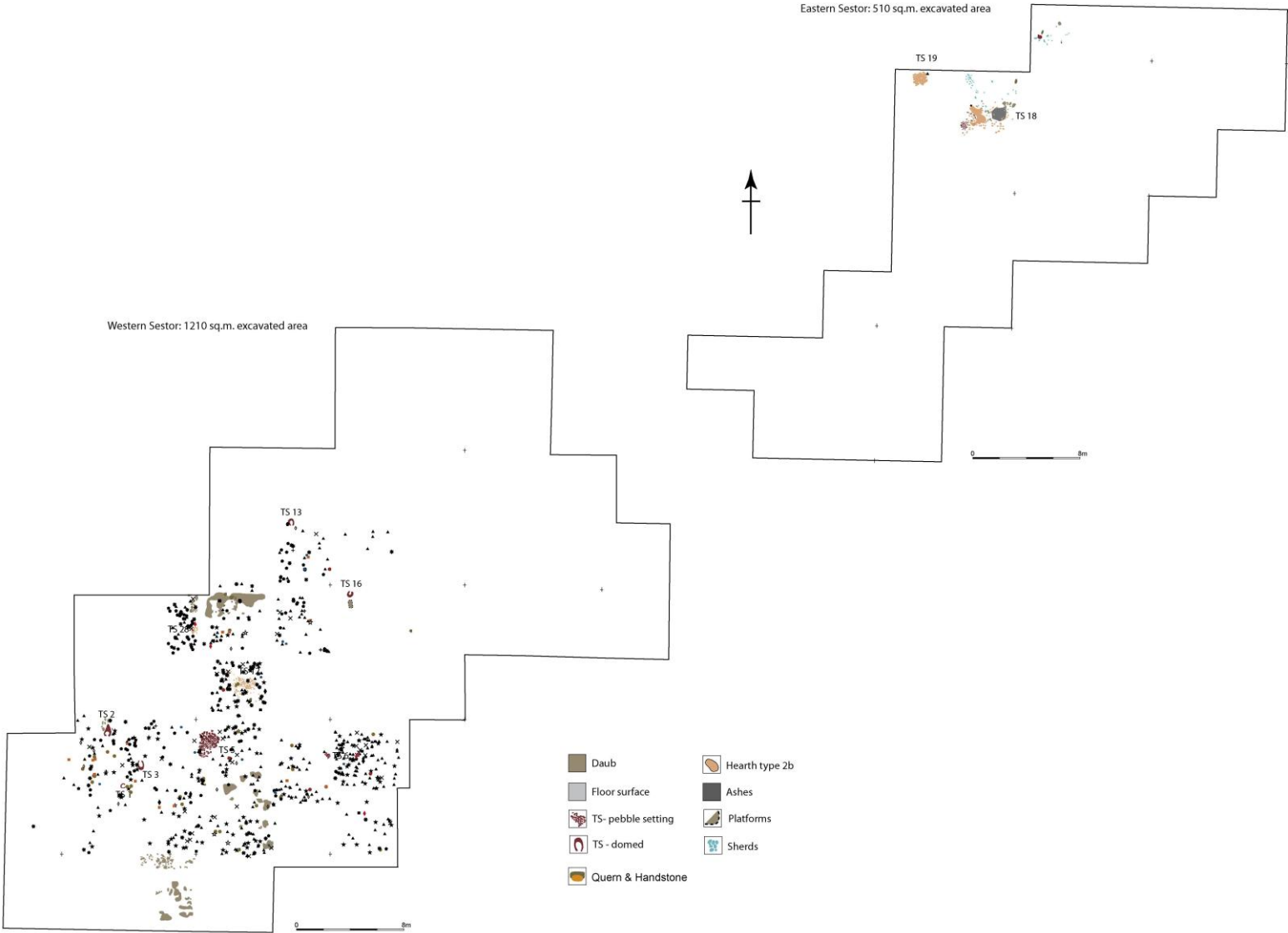
Scale: 0 8m



Plan 5. 9 Large-scale plan that shows the distribution of all four categories of finds at Avgi I: chipped stone, groundstone, bone tools and miscellaneous objects.



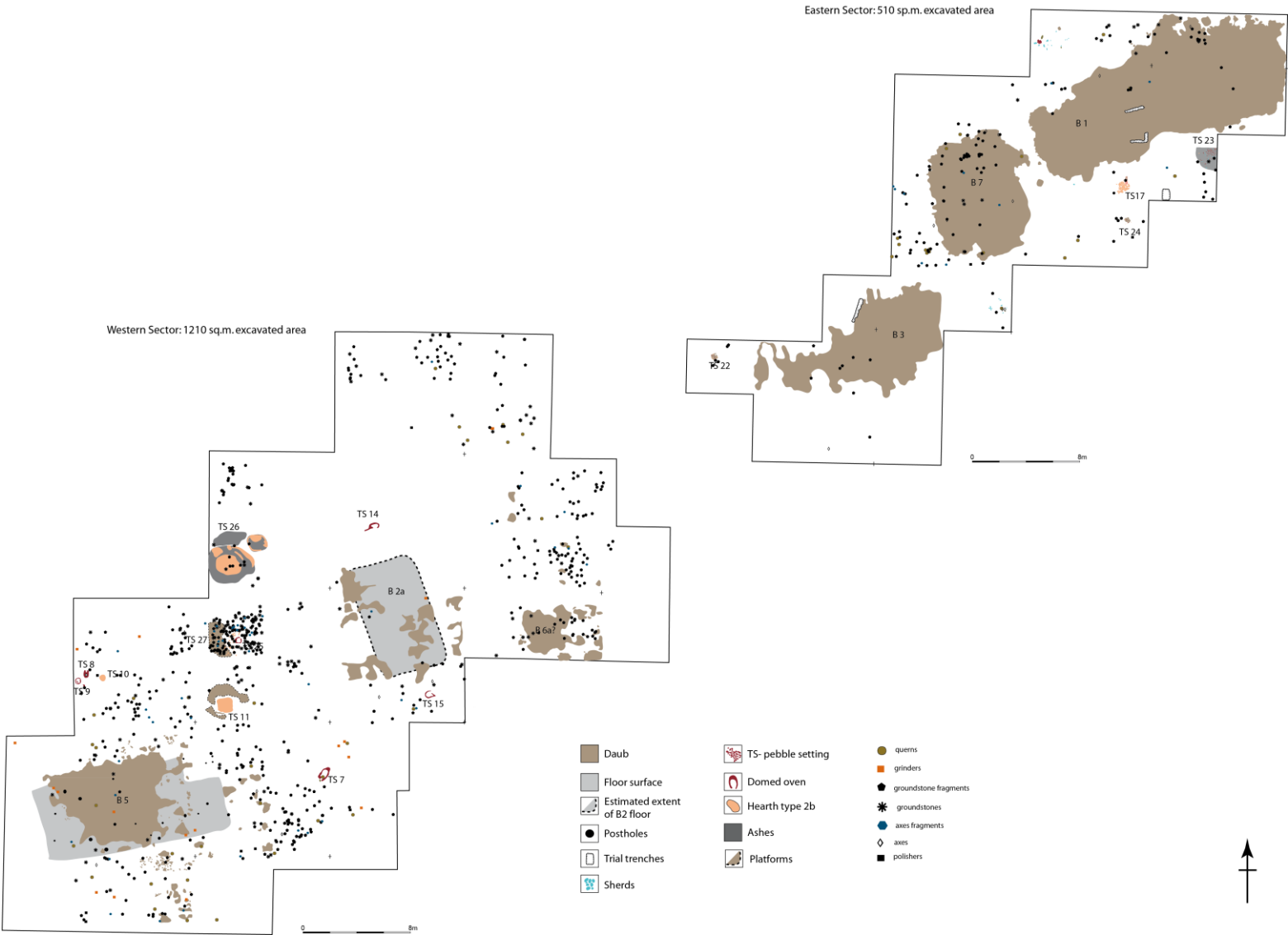
Plan 5. 10 Large-scale plan that shows the distribution of all four categories of finds at Avgi II: chipped stone, groundstone, bone tools and miscellaneous objects.



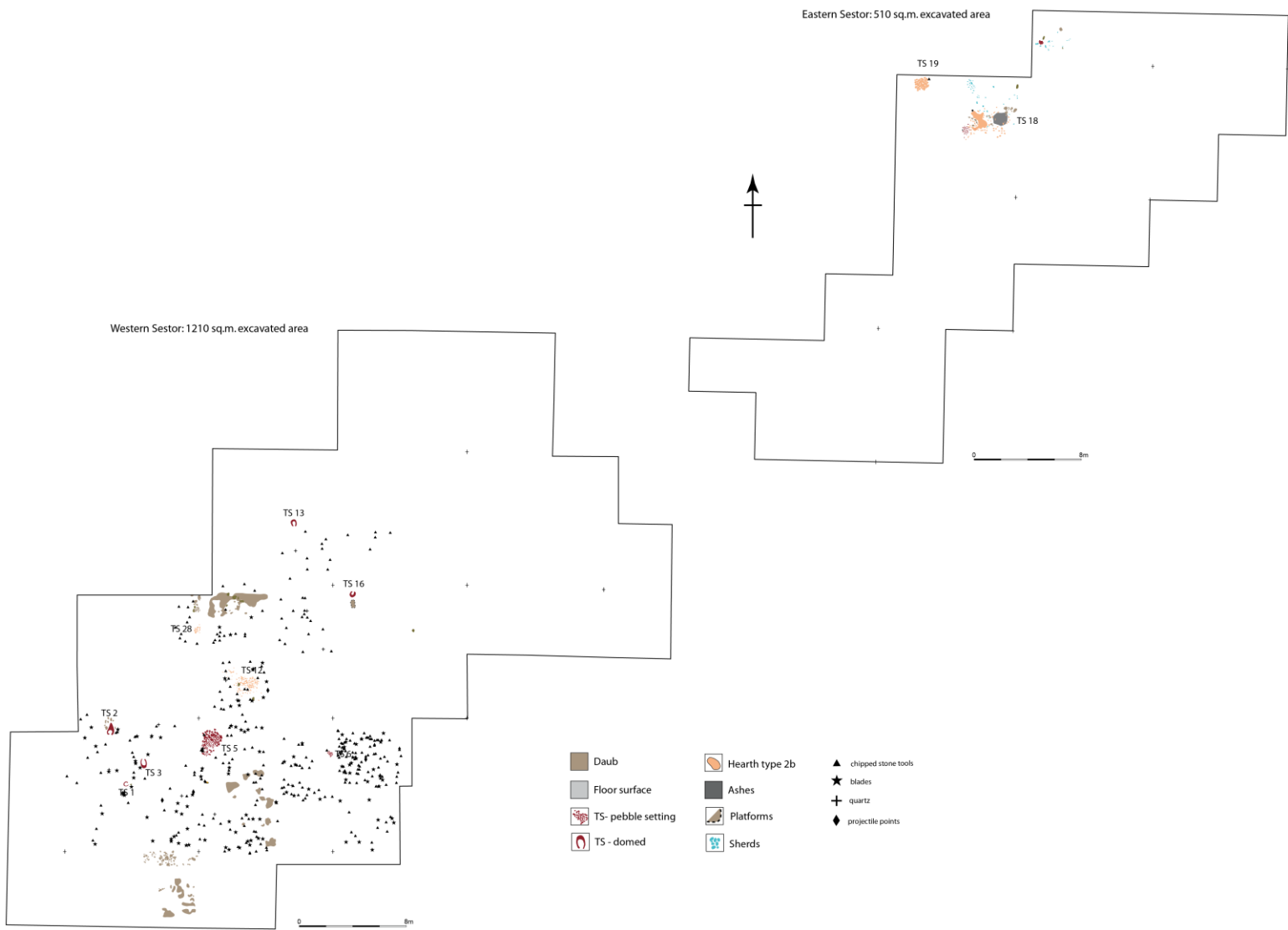
Plan 5. 11 Avgi I: Large-scale plan that shows the distribution of the chipped stone tools.



Plan 5. 12 Avgi I: Large-scale plan that shows the distribution of the groundstone tools.



Plan 5. 21 Avgi II: Large-scale plan that shows the distribution of the chipped stone tools.



Plan 5. 22 Avgi II: Large-scale plan that shows the distribution of the groundstone tools.

