



OPEN ACCESS

# Bruising in children who are assessed for suspected physical abuse

Alison Mary Kemp,<sup>1</sup> Sabine Ann Maguire,<sup>1</sup> Diane Nuttall,<sup>1</sup> Peter Collins,<sup>2</sup> Frank Dunstan<sup>1</sup>

<sup>1</sup>Early Years Research Programme, Institute of Primary Care and Public Health, College of Biomedical and Life Sciences, School of Medicine, Cardiff University, Cardiff, UK

<sup>2</sup>Department of Haematology, Institute of Infection and Immunity, School of Medicine, Cardiff University, Cardiff, UK

## Correspondence to

Professor Alison Kemp, Primary Care and Public Health, School of Medicine, Cardiff University, 4th Floor Neuadd Meirionnydd, Heath Park, Cardiff CF14 4YS, UK; [kempam@cardiff.ac.uk](mailto:kempam@cardiff.ac.uk)

Received 25 April 2013  
Revised 5 August 2013  
Accepted 7 August 2013  
Published Online First  
16 September 2013

## ABSTRACT

**Objective** To describe the characteristics of bruising and mode of presentation of children referred to the paediatric child protection team with suspected physical abuse (PA), and the extent to which these differ between the children where abuse was confirmed and those where it was excluded.

**Design** Cross-sectional study.

**Setting and patients** 519 children, <6 years, referred to two paediatric child protection teams.

**Main outcome measures** The mode of presentation, number, anatomical distribution, size and appearance of bruises according to whether PA was confirmed or excluded. ORs with 95% CI were calculated where relevant.

**Results** PA was confirmed in 69% of children; the rate varied from 84% when abuse was witnessed, admitted, alleged or where explanation for injury was absent or implausible, to 50% where there was a concerning history. Significantly more children with PA had bruises (89.4%) than PA-excluded (69.9%) and had significantly more sites affected ( $p<0.001$ ). The odds of a PA child having bruising to: buttocks/genitalia (OR 10.9 (CI 2.6 to 46), left ear (OR 7.10 (CI 2.2 to 23.4), cheeks (Left (OR 5.20 (CI 2.5 to 10.7), Right OR 2.83 (CI 1.5 to 5.4)), neck (OR 3.77 (CI 1.3 to 10.9), trunk (back (OR 2.85 (CI 1.6 to 5.0) front (OR 4.74 (CI 2.2 to 10.2), front of thighs (OR 2.48 (CI 1.4 to 4.5) or upper arms (OR 1.90 (CI 1.1 to 3.2) were significantly greater than in children with PA-excluded. Petechiae, linear or bruises with distinct pattern, bruises in clusters, additional injuries or a child known to social services for previous child abuse concerns were significantly more likely in PA.

**Conclusions** Features in the presenting history, the extent and pattern of bruising differed between children with confirmed PA and those where abuse was excluded. These findings can provide a deeper understanding of bruising sustained from PA.

## INTRODUCTION

A preschool child presenting with suspected physical abuse (PA) presents challenges to the paediatrician who must undertake a clinical and forensic assessment of injuries to determine the plausibility of any explanations offered and whether these fit with the injuries seen. Following a full history, examination, appropriate clinical investigations and a multiagency assessment, a consensus decision is made by the multidisciplinary child protection team as to the likelihood of PA.

Bruising is the most common injury sustained by children who have been physically abused. Paediatricians must have the skills to differentiate abusive bruises from those that arise from everyday activity or unintentional injury. A systematic review

## What is already known on this topic

- ▶ Young children who are referred to the paediatric child protection team with suspected physical abuse (PA) frequently have bruises. It is unclear whether there is any difference between the pattern of bruises when PA is confirmed and when PA is excluded.
- ▶ Bruising is the commonest injury seen in physical abuse.

## What this study adds

- ▶ In a population of children with suspected physical abuse (PA), the prevalence, number, and characteristics of bruises vary significantly between children with PA and those where PA is excluded.
- ▶ The odds of a bruise on the buttocks or genitalia, cheeks, neck, trunk, head, front of thighs, upper arms were significantly greater in children with PA than in children with PA-excluded.
- ▶ Petechiae, linear or bruises with distinct pattern, bruises in clusters, additional injuries or a child known to social services for previous child abuse concerns were significantly more likely in PA.

in 2005, updated in 2012,<sup>1 2</sup> identified a paucity of literature characterising abusive bruising in children. There were only three published comparative studies that investigated differences in the distribution, number, pattern and appearance of bruises between children who were abused and those who had unintentional injuries,<sup>3–5</sup> and none set out to describe the pattern of bruises in children referred to the child protection team with suspected PA.

This study describes the characteristics of the presenting history, the prevalence, number, distribution and characteristics of bruising in preschool children who had been referred to paediatricians for the assessment of suspected PA and the extent to which these differ between the children where abuse was confirmed and those where it was excluded.

## METHOD

A retrospective cross-sectional study of the case records of consecutive children, aged less than 6 years, who were referred to two paediatric child protection

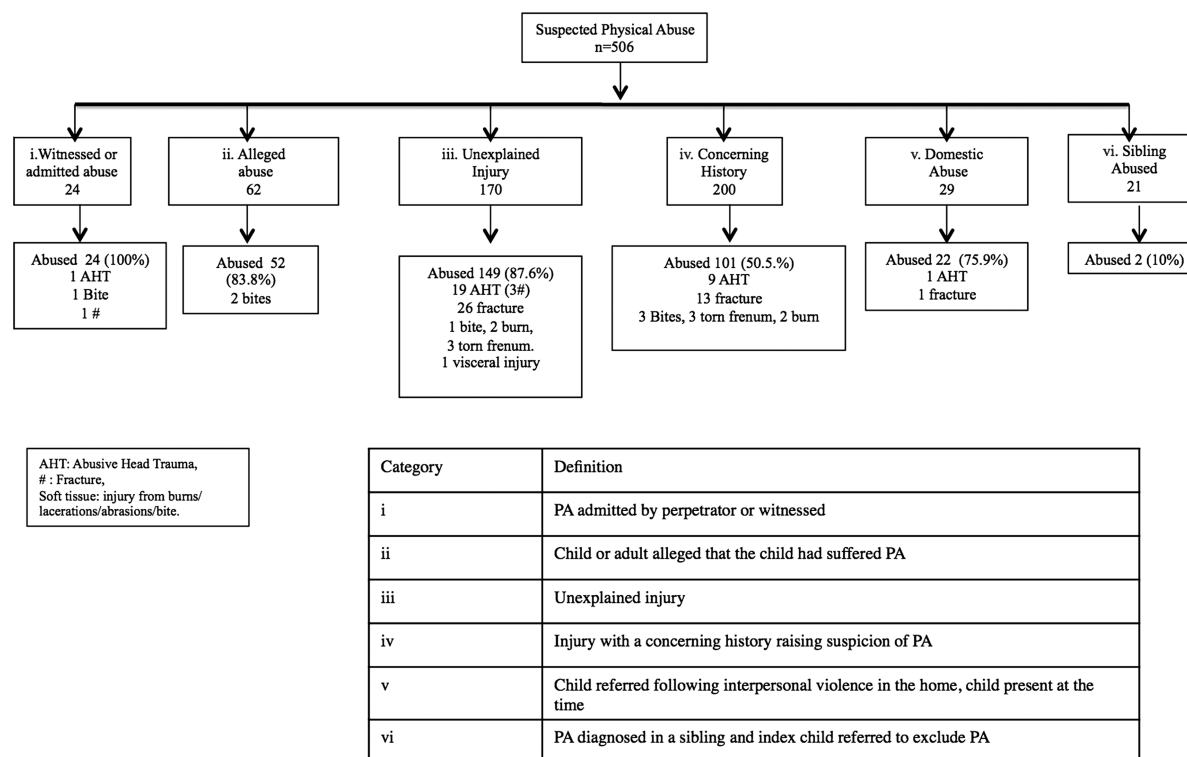


Open Access  
Scan to access more  
free content



▶ <http://dx.doi.org/10.1136/archdischild-2013-304689>

**To cite:** Kemp AM, Maguire SA, Nuttall D, et al. *Arch Dis Child* 2014;**99**:108–113.



**Figure 1** Reasons for referral for paediatric assessment of suspected physical abuse.

teams in southeast Wales for clinical and 'forensic' assessment of suspected PA, between November 2003 and December 2011. Cases were identified from child protection clinical records at the University Hospital and neighbouring Hospital Board: children with bleeding disorders were excluded. The same method of recording data had been used over the entire period.

Six categories were defined according to the reason for referral (figure 1). Children were deemed to have suffered from PA if that was the outcome decision made at multiagency child protection strategy meetings or case conferences<sup>6</sup> where a joint decision as to the probability of PA based upon all information available. A second group of children, 'PA-excluded', were cases where PA was excluded at a multiagency meeting or by the clinical team. A third group of children were suffering from either a medical or 'other' cause.

A standardised clinical proforma was completed contemporaneously for all children, recording all visible injuries on a body chart and any injuries identified from radiological investigation. The location of each bruise was recorded according to one of 36 anatomical sites, together with the size and appearance: petechiae, bruise of a distinct shape or within a cluster. Bruises on the shins, often deemed to be a universal finding among ambulatory children, were not consistently recorded by clinicians during a child protection assessment, and thus were excluded from the analysis. The child's age, gender and most advanced motor developmental milestones were recorded. There were three categories of development: (1) baby: premobile, rolling or sitting; (2) early mobility: crawling, cruising and (3) walking independently. Data were anonymised and entered on to an access database by the research nurse. Data entry was checked for duplication and accuracy by an independent data entry clerk.

### Statistical methods

For binary data, proportions were compared using  $\chi^2$  tests; adjustments for confounders and estimation of ORs were

achieved using logistic regression. Means were compared using t tests when the distributions were approximately normal. Count data were modelled using negative binomial distributions, and generalised linear models using this distribution were used to compare means when adjusting for other factors. Hypothesis tests were conducted using a 5% level of significance.

Ethical approval was granted for this study by Southampton & South West Research Ethics Committee No. 05/MRE11/8. National Information Governance Board approval was given to use child protection case notes for a case record review and analysis of anonymised data.

## RESULTS

### Study population

Five hundred and eighteen children were identified from records. Twelve cases, with medical cause (7), neglect (1) or Mongolian blue spot (4) were excluded from further analysis. The reasons for referral and child protection outcome are shown in figure 1.

Data were collected from 506 children; 100 children were referred to the child protection teams from the emergency department, 25 from hospital inpatients and the remaining 381 were referred from social care.

PA was confirmed in 350 (69.2%) and excluded in 156. In 84% of PA-excluded, the decision was made at a case conference or strategy meeting; the remaining decisions were made by the clinician prior to discharge. The proportion in which PA was confirmed varied according to the referral category (figure 1). PA was confirmed in at least 84% where abuse was witnessed, admitted, alleged or where the child had an unexplained injury, but in only 50.5% where the reason for referral was a concerning history. Of the 200 children with a concerning history (group iv, figure 1), 186 had a single explanation for the injury. In 92 of these children, the explanation was considered implausible, and PA was confirmed but was excluded in the remaining 94 children.

**Table 1** Gender, age and developmental stage of children who were physically abused and those where abuse was excluded (*note: denominators vary due to missing data*)

	Whole study group	Physical abuse	Physical abuse excluded
Mean (SD) age in months	20.8 (17.7)	21.1 (18.1)	20.3 (16.6)
Number (%) of male	300/502 (59.8)	208/346 (60.1)	92/156 (59.0)
Baby (%)	137/502 (27.3)	107/346 (30.9)	30/156 (19.2)
Early mobile (%)	75/502 (14.9)	40/346 (11.6)	35/156 (22.4)
Walking (%)	290/502 (57.8)	199/346 (57.5)	91/156 (58.3)

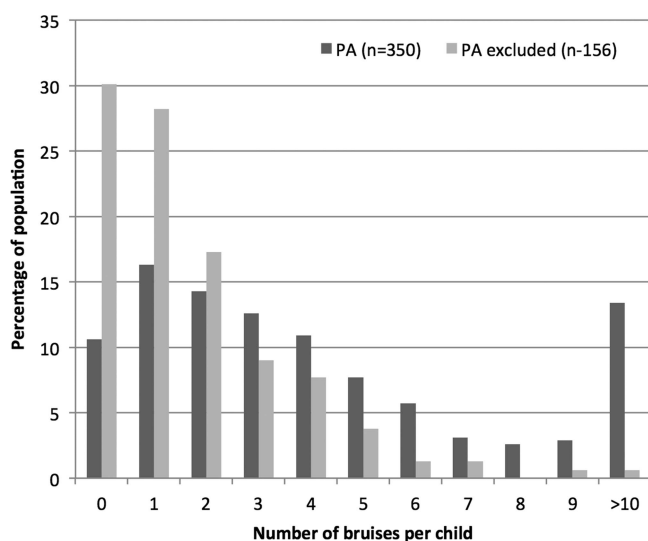
Multiple explanations were provided for 14 children, in nine of whom PA was confirmed.

Sixty per cent of the total group were male and the mean age was 20.8 months (table 1). There were no significant differences in age ( $p=0.67$ ) or gender ( $p=0.81$ ) between the children with PA and those with PA-excluded. The developmental status of the children differed across the two groups with significantly more babies but fewer early mobile children in the PA group than in the PA-excluded ( $p<0.001$ ).

### The number and distribution of bruises

Children in the PA group were significantly more likely to have bruising than children PA-excluded: 89.4% (313/350) vs 69.9% (109/156), difference 19.6% (95% CI 12.0% to 27.7%). Fitting negative binomial regression models showed that PA children had significantly more bruises and more sites affected than the PA-excluded group ( $p<0.001$  for bruises and sites) (figure 2, table 2).

There was a significant difference between the mean number of bruises and number of sites affected between walking and the earlier developmental stages (all  $p$  values  $<0.01$ ), but the difference between baby and early mobility was not significant ( $p=0.26$  for the number of bruises and  $p=0.55$  for sites affected) (table 2).

**Figure 2** Number of bruises per child and percentage of children with physical abuse and physical abuse excluded who were affected.

The locations of bruises were recorded in 36 categories. As laterality was not a significant factor for certain sites (eg, front of thigh), and other sites were very rarely bruised (eg, wrist), the 36 locations were reduced to 17 (table 3). Table 3 shows the percentage of children, in both PA and PA-excluded categories, with at least one bruise in each of these 17 locations; the results were subdivided by developmental stage to show how bruising varies by location and developmental stage. The odds of a PA child having a bruise on the buttocks or genitalia, cheeks, neck, trunk, head, front of thighs, or upper arms, were significantly greater than in PA-excluded children (table 3, figure 3). These results make the assumption that the effect of abuse status is the same, regardless of developmental stage. There was no significant interaction between abuse status and developmental stage, and so the assumption appears reasonable.

Petechiae were reported in 54 (15.4%) of the 350 physically abused children, and in three (1.9%) of the 156 PA-excluded children. The difference is highly significant OR 9.3 (95% CI 2.9 to 30.2). Linear bruises or bruises with distinct pattern (slap mark, finger tip bruising or matching an implement or object) were seen in 51 children (47 physically abused, 4 PA-excluded) OR for PA 5.9 (CI 2.1 to 16.7).

A cluster of bruises was defined as the presence of at least two bruises in the same location, using the more detailed set of 36 locations. Of the 313 abused children with at least one bruise, 211 (67.4%) had at least one cluster, compared with 37 (33.9%) of the 109 abuse-excluded children. Clustering of bruises was significantly more likely in PA children, OR 4.0 (95% CI 2.5 to 6.4). The most common sites for clusters included the upper arms, the cheeks and the front and back of the trunk. The mean size of bruises in the two groups was very similar, 1.53 cm in the PA group and 1.57 in the PA-excluded group.

Forty-seven (13%) of the 350 children in the PA group were known to social services for previous child abuse concerns, in comparison to 8/156 (5%) PA-excluded (OR 2.9 (95% CI 1.3 to 6.2)). Eighty-eight (25.2%) of the PA children had additional injuries compared to 10% (16/156) of PA-excluded group (OR 2.9 (95% CI 1.7 to 5.2)). Of the PA group, 30/350 (8.6%) had abusive head trauma, 50 (14.3%) had fractures (only 26% (13/50) had bruises overlying the fracture, eight of the 30 acute fractures had overlying bruising). Twenty (5.7%) children had additional soft tissue injuries: bites (7), abrasions (3), burns (4), torn labial frenum (6), and subconjunctival haemorrhage (1). Significantly fewer children with abusive head trauma had bruises than the remaining children with confirmed PA (60% (18/30) vs 93.4% (299/320) OR 0.1 (CI 0.04 to 0.25)).

### DISCUSSION

PA was confirmed in 69.2% of children under the age of 6 years who were referred for assessment of suspected PA. There were significant differences in this percentage between different referral scenarios (figure 1). Eighty-three per cent of the overall population had one or more bruises, with a significantly higher percentage in those in whom PA was confirmed compared with those in whom it was excluded. These children had significantly more bruises distributed over a greater number of regions of the body than when PA was excluded. There was no statistically significant difference in the age or gender of the child or the size of the bruises between the PA confirmed and PA-excluded group.

Petechiae, bruises of a linear nature or with a distinct pattern, and 'clusters' of bruises were seen more frequently in the children with confirmed PA. Nayak *et al*<sup>4</sup> showed that the presence

**Table 2** Mean, SD and range of the number of bruises per child and the mean number of sites affected per developmental group for physically abused and physical abuse-excluded groups

	Total population		Physical abuse		Physical abuse-excluded	
	Mean number of bruises (SD) (range)	Mean number of regions with bruises (SD) (range)	Mean number of bruises (SD) (range)	Mean number of regions with bruises (SD) (range)	Mean number of bruises (SD) (range)	Mean number of regions with bruises (SD) (range)
Baby	2.5 (3.2) (0, 22)	1.6 (1.4) (0, 6)	2.8 (3.5) (0, 22)	1.6 (1.5) (0, 6)	1.3 (1.8) (0, 7)	0.8 (0.8) (0, 3)
Early mobile	2.6 (2.9) (0, 14)	1.3 (1.3) (0, 8)	3.8 (3.3) (0, 14)	1.8 (1.5) (0, 8)	1.2 (1.4) (0, 5)	0.8 (1.1) (0, 4)
Walking	4.9 (6.0) (0, 39)	2.4 (2.1) (0, 12)	6.2 (6.7) (0, 39)	2.8 (2.3) (0, 12)	2.1 (2.2) (0, 14)	1.4 (1.2) (0, 6)
Total	3.9 (5.1) (0, 39)	2 (1.9) (0, 12)	4.9 (5.8) (0, 39)	2.3 (2.1) (0, 12)	1.7 (2) (0, 14)	1.1 (1.1) (0, 6)

of petechiae increased the likelihood that injuries had arisen from PA. They identified petechiae in 21.9% (95% CI 15.6 to 29.8) of children less than 17 years old who had suffered from PA, a similar prevalence figure, albeit in an older age group. Brinkmann *et al*<sup>7</sup> found clusters of skin injuries in 88% of 93 severely abused children (0–16 years old). They defined clusters as at least three injuries (bruises, scars, grazes and lacerations) occurring concurrently which were reported predominantly to the outside, front and back of limbs, head, back and buttocks. Bruises of a distinct pattern of implements used or slap mark<sup>8 9</sup> have also been described in PA in small case series and case studies.<sup>7 10 11</sup>

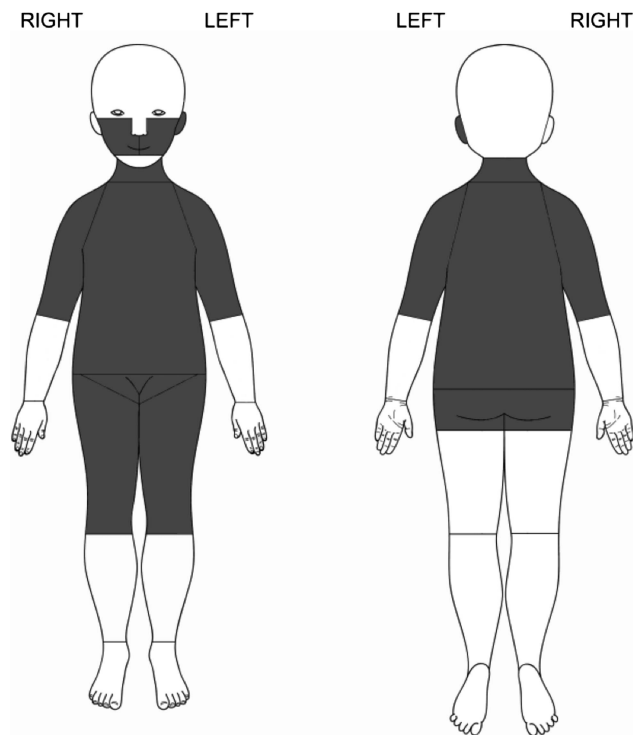
Bruising to the left ear, cheeks, neck, trunk, front of thighs, upper arms, buttocks and genitalia were found significantly more frequently in the PA-confirmed children, than when PA was excluded. These regions are not typically bruised in falls and unintentional injuries<sup>2</sup> in this age group. There was also a preponderance of left sided cheek and ear bruises.

As far as we are aware, there have been no other studies comparing bruising patterns in children where PA was confirmed with those where PA was suspected but excluded after assessment. Other studies have compared abused children with different groups of children with unintentional injuries. An earlier study by this group<sup>3</sup> compared an older population of abused children, aged from 1 to 13 years, with those in a general paediatric outpatient setting. Bruises on the head, neck and trunk were more common in abused children compared with controls. Nayak *et al*<sup>4</sup> showed that bruising to the head, neck or trunk was more common in children referred for suspected PA than in children seen in the emergency department for unintentional injuries. Pierce *et al*,<sup>5</sup> in a case-control study of children less than 4 years old who were admitted to paediatric intensive care (42 children with PA and 53 with trauma), found that bruising to ears, neck, right arm, hands, chest, buttocks and genitalia was more common in PA children than in those with unintentional injuries. The populations of index children and comparison

**Table 3** Percentages of children with at least one bruise in the specified location, by physical abuse status and development stage

Region	Original regions amalgamated	Physical abuse			Physical abuse excluded			OR (95% CI)
		Baby (107)	Early mobile (40)	Walking (199)	Baby (30)	Early mobile (35)	Walking (91)	
Buttocks/genitalia	Buttocks, genitalia	0.9	12.5	16.1	0.0	0.0	2.2	10.9 (2.6 to 46)*
Left ear	Left ear	7.5	7.5	14.6	0.0	0.0	3.3	7.10 (2.2 to 23.4)*
Left cheek	Left cheek	27.1	20.0	23.6	6.7	2.9	6.6	5.20 (2.5 to 10.7)*
Front trunk	Front trunk	16.8	5.0	24.1	3.3	2.9	6.6	4.74 (2.2 to 10.2)*
Neck	Neck	5.6	2.5	11.6	6.7	0.0	2.2	3.77 (1.3 to 10.9)*
Rear trunk	Rear trunk	9.3	7.5	36.2	10.0	8.6	13.2	2.85 (1.6 to 5.0)*
Right cheek	Right cheek	13.1	20.0	21.1	3.3	8.6	8.8	2.83 (1.5 to 5.4)*
Thighs—front	Front left thigh, front right thigh	12.1	17.5	26.1	3.3	5.7	14.3	2.48 (1.4 to 4.5)*
Upper arm	Left upper arm, right upper arm	15.0	25.0	25.1	6.7	8.6	17.6	1.90 (1.1 to 3.2)*
Hands	Left hand, right hand	0.9	2.5	3.0	0.0	0.0	2.2	1.95 (0.4 to 9.4)
Back of leg	Back of left and right thigh, back below knee	2.8	7.5	10.1	0.0	0.0	7.7	1.88 (0.8 to 4.5)
Feet	Left and right foot	3.7	2.5	5.0	10.0	0.0	1.1	1.70 (0.6 to 5.2)
Lower arm	left and right wrist, left and right lower arm, elbow	2.8	0.0	16.6	0.0	2.9	12.1	1.57 (0.8 to 3.1)
Head	Head: top, back, right and left side	15.0	12.5	9.5	13.3	2.9	6.6	1.55 (0.8 to 3.1)
Right ear	Right ear	4.7	2.5	6.5	0.0	5.7	4.4	1.50 (0.6 to 3.8)
Facial	Forehead, nose, chin, mouth	14.0	22.5	25.6	13.3	25.7	15.4	1.37 (0.8 to 2.2)
Eyes	Left eye, right eye	3.7	12.5	9.5	0.0	5.7	13.2	0.95 (0.5 to 1.9)

\*OR comparing the odds of any bruising in the region in physical abuse compared with physical abuse-excluded, are adjusted for development stage (OR for abuse significant).



**Figure 3** Regions of the body (shaded area) where bruises were significantly more likely to occur in a child with confirmed physical abuse than in one where physical abuse was excluded.

groups included in these three studies are all very different from those in this study, an important point when comparing study findings. Nevertheless there is broad consistency across studies between the sites of bruising that are more common in PA.

It has previously been estimated that 21% of children (under 3 years of age) have bruises at any one time from unintentional injury and everyday activities.<sup>12</sup> The prevalence varied with motor development from an estimated 0.6% in those under 6 months of age to 52% in children who are walking.<sup>12</sup> Thus, not every bruise on a child who has been physically abused is necessarily abusive in aetiology. Previous studies have shown that unintentional bruises occur over the front of the body<sup>12 13</sup> and on bony prominences: the facial T is a typical location for facial injuries after slips, trips and falls.<sup>14</sup> In our study, bruises over the forehead, nose, mouth and chin were common in abused children as well as in those where abuse was excluded; some of these may represent bruises sustained from unintentional injury in the abused children. The pattern of bruises in children with unintentional injury and the variation over time will be the subject of a further study by this group.

The proportion of children where PA was confirmed varied according to the nature of the explanation given for injury and was greatest when abuse was admitted, witnessed or alleged, or where the child had an unexplained injury or implausible explanations. There are few published studies that explore the presenting history of preschool children with suspected abuse as it relates to outcome. This is surprising when one of the key decisions that a paediatrician has to address is whether a proposed explanation for an injury fits with the pattern of injury seen. Many studies use the characteristics of the presenting history to inform their security of diagnosis of abuse case definition, but few have validated this in practice. Hettler *et al* used a case definition for abusive head trauma that did not include any information about presenting history and showed that in a

population of children with traumatic brain injury, an absent history of trauma, implausible explanations and a changing story were most likely to reflect abuse.<sup>15</sup>

A study limitation is that the data were gathered retrospectively, but it has been standard practice in the units involved to record the number, distribution and measure the sizes of bruises in children where PA is suspected. We are confident that these data are both complete and accurate. The great majority of cases were Caucasian, and so, it was not possible to analyse the data according to skin colour or ethnicity. The population were children where the suspicion of PA had already been raised. This may affect the pattern of bruises seen, which is unlikely to be representative of an age-matched general population.<sup>3–5</sup>

There is an inherent risk of circular reasoning in any study that analyses the signs of PA in the absence of an independent gold standard diagnostic test. The nature of the bruises themselves may form part of the decision as to the likelihood of PA. The decision made by the multiagency child protection team was taken as the confirmation of abuse, where all factors were considered on an *individual* child basis by piecing together all explanatory, clinical and social factors and, thus, minimising the influence of the characteristics of the bruises themselves. This study confirms that while every child presents with a unique combination of features and circumstances, when analysed on a *population* basis, distinct patterns of bruising emerge that differ between children with confirmed PA and those with PA-excluded. These findings have the potential to provide a deeper understanding of bruising which can only improve the quality of the clinical decisions when recognising and evaluating young children with suspected PA.

**Correction notice** This paper has been slightly amended since it was published Online First. In the first paragraph of the Discussion the authors state that: "There was no significant difference in the age or developmental status of the child or the size of bruises..." This should read "There was no difference in the age or gender of the child or the size of the bruises..."

**Acknowledgements** We would like to thank the Medical Research Council for funding this study and associated programme of research; Anne Russell, Anwen Howells, Children's Young Persons Research Network, NISCHR Wales for data collection; Dr Alicia Rawlinson for coordinating data from one of the two centres, Ciara Harris, Physiotherapy Student, Birmingham University for data entry checking and Professor David Fone for advice regarding original grant application.

**Contributors** AMK: Principal investigator, study design, study coordination. Lead writer of the manuscript, descriptive data analysis. SM: collaborator, involved in study design and supervision, paper writing and editing of final drafts. FD: Statistician, collaborator, statistical analysis, paper writing method and results section, editing final drafts. PC: Clinical collaborator, study design and steering group, paper writing and editing. DN: Research nurse, data collection, data extraction, database entry, supervised double data entry, ethics submission, research governance and liaison with ethics committee, R and D, NIGB etc.

**Funding** Medical Research Council, grant number G 0601638.

**Competing interests** None.

**Ethics approval** Southampton & South West Research Ethics Committee No. 05/MRE11/8.

**Provenance and peer review** Not commissioned; externally peer reviewed.

**Data sharing statement** Data from the study would be available if authors are contacted subject to agreements within the ethical and NIGB approvals for the study.

**Open Access** This is an Open Access article distributed in accordance with the terms of the Creative Commons Attribution (CC BY 3.0) license, which permits others to distribute, remix, adapt and build upon this work, for commercial use, provided the original work is properly cited. See: <http://creativecommons.org/licenses/by/3.0/>

## REFERENCES

- 1 Fagan J, Dore MM. Mother-child play interaction in neglecting and non-neglecting mothers. *Early Child Dev Care* 1993;87:59–68.

- 2 Maguire S, Mann MK, Sibert J, *et al*. Are there patterns of bruising in childhood which are diagnostic or suggestive of abuse? *Arch Dis Child* 2005;90:182–6.
- 3 Dunstan FD, Guilda ZE, Kontos K, *et al*. A scoring system for bruise patterns: a tool for identifying abuse. *Arch Dis Child* 2002;86:330–3.
- 4 Nayak K, Spencer N, Shenoy M, *et al*. How useful is the presence of petechiae in distinguishing non-accidental from accidental injury? *Child Abuse Negl* 2006;30:549–55.
- 5 Pierce M, Kaczor K, Aldridge S, *et al*. Bruising characteristics discriminating physical child abuse from accidental trauma. *Pediatrics* 2010;125:67–74.
- 6 Working together to Safeguard children: A guide to inter-agency working to safeguard and promote the welfare of children. <https://www.education.gov.uk/publications/standard/publicationDetail/Page1/DCSF-00305-2010>
- 7 Brinkmann B, Püschel K, Mätzsch T. Forensic dermatological aspects of the battered child syndrome. *Aktuelle Derm* 1979;5:217–32.
- 8 Feldman KW. Patterned abusive bruises of the buttocks and the pinnae. *Pediatrics* 1992;90:633–6.
- 9 Patno K, Jenny C. Who slapped that child? *Child Maltreat* 2008;13:298–300.
- 10 Ellerstein NS. The cutaneous manifestations of child abuse and neglect. *Am J Dis Children* 1979;133:906–9.
- 11 Sussman SJ. Skin manifestations of the battered-child syndrome. *J Pediatr* 1968;72:99–101.
- 12 Sugar NH, Taylor JA, Feldman KW. Bruises in infants and toddlers; those who don't bruise rarely bruise. Puget sound pediatric research network. *Arch Pediatr Adolesc Med* 1999;153:399–403.
- 13 Carpenter RF. The prevalence and distribution of bruising in babies. *Arch Dis Child* 1999;80:363–6.
- 14 Chang LT, Tsai MC. Craniofacial injuries from slip, trip, and fall accidents of children. *J Trauma* 2007;63:70–4.
- 15 Hettler J, Greenes DS. Can the initial history predict whether a child with a head injury has been abused? *Pediatrics* 2003;111:602–7.



## Bruising in children who are assessed for suspected physical abuse

Alison Mary Kemp, Sabine Ann Maguire, Diane Nuttall, et al.

*Arch Dis Child* 2014 99: 108-113 originally published online September 16, 2013

doi: 10.1136/archdischild-2013-304339

---

Updated information and services can be found at:

<http://adc.bmj.com/content/99/2/108.full.html>

---

*These include:*

### References

This article cites 14 articles, 7 of which can be accessed free at:

<http://adc.bmj.com/content/99/2/108.full.html#ref-list-1>

Article cited in:

<http://adc.bmj.com/content/99/2/108.full.html#related-urls>

### Open Access

This is an Open Access article distributed in accordance with the terms of the Creative Commons Attribution (CC BY 3.0) license, which permits others to distribute, remix, adapt and build upon this work, for commercial use, provided the original work is properly cited. See: <http://creativecommons.org/licenses/by/3.0/>

### Email alerting service

Receive free email alerts when new articles cite this article. Sign up in the box at the top right corner of the online article.

---

### Topic Collections

Articles on similar topics can be found in the following collections

[Editor's choice](#) (98 articles)  
[Open access](#) (73 articles)  
[Child abuse](#) (213 articles)  
[Abuse \(child, partner, elder\)](#) (86 articles)  
[Injury](#) (262 articles)  
[Trauma](#) (262 articles)  
[Epidemiologic studies](#) (1143 articles)

---

To request permissions go to:

<http://group.bmj.com/group/rights-licensing/permissions>

To order reprints go to:

<http://journals.bmj.com/cgi/reprintform>

To subscribe to BMJ go to:

<http://group.bmj.com/subscribe/>

## Notes

---

To request permissions go to:

<http://group.bmj.com/group/rights-licensing/permissions>

To order reprints go to:

<http://journals.bmj.com/cgi/reprintform>

To subscribe to BMJ go to:

<http://group.bmj.com/subscribe/>