

# Identification of Potential Anticancer Activities of Novel *Ganoderma lucidum* Extracts Using Gene Expression and Pathway Network Analysis

Chi H.J. Kao, Karen S. Bishop, Yuanye Xu, Dug Yeo Han, Pamela M. Murray, Gareth J. Marlow and Lynnette R. Ferguson

Discipline of Nutrition and Dietetics, Faculty of Medical and Health Sciences, The University of Auckland, Auckland, New Zealand.

**ABSTRACT:** *Ganoderma lucidum* (lingzhi) has been used for the general promotion of health in Asia for many centuries. The common method of consumption is to boil lingzhi in water and then drink the liquid. In this study, we examined the potential anticancer activities of *G. lucidum* submerged in two commonly consumed forms of alcohol in East Asia: malt whiskey and rice wine. The anticancer effect of *G. lucidum*, using whiskey and rice wine-based extraction methods, has not been previously reported. The growth inhibition of *G. lucidum* whiskey and rice wine extracts on the prostate cancer cell lines, PC3 and DU145, was determined. Using Affymetrix gene expression assays, several biologically active pathways associated with the anticancer activities of *G. lucidum* extracts were identified. Using gene expression analysis (real-time polymerase chain reaction [RT-PCR]) and protein analysis (Western blotting), we confirmed the expression of key genes and their associated proteins that were initially identified with Affymetrix gene expression analysis.

**KEYWORDS:** *Ganoderma lucidum*, prostate cancer, microarray, Western blot, PC3, DU145

**CITATION:** Kao et al. Identification of Potential Anticancer Activities of Novel *Ganoderma lucidum* Extracts Using Gene Expression and Pathway Network Analysis. *Genomics Insights* 2016;9:1–16 doi:10.4137/GEI.S32477.

**TYPE:** Original Research

**RECEIVED:** August 25, 2015. **RESUBMITTED:** October 22, 2015. **ACCEPTED FOR PUBLICATION:** October 24, 2015.

**ACADEMIC EDITOR:** Gustavo Caetano-Anollés, Editor in Chief

**PEER REVIEW:** Nine peer reviewers contributed to the peer review report. Reviewers' reports totaled 1654 words, excluding any confidential comments to the academic editor.

**FUNDING:** The experimental work was funded by NZFocus Ltd. CK was funded by NZFocus Ltd and a grant from the Ministry of Business, Innovation and Employment. KB, PM, and LF were funded by the Auckland Cancer Society Research Centre. DH and GM were funded by Nutrigenomics New Zealand. YX was funded by Maurice & Phyllis Paykel Trust Summer studentship. The authors confirm that the funder had no influence over the study design, content of the article, or selection of this journal.

**COMPETING INTERESTS:** NZFocus Ltd., which sponsored and provided *G. lucidum* for this research, has interest in marketing *G. lucidum* extracts used in this study for promotion of general health and well being. NZFocus Ltd. was not involved in the design of the study or the interpretation of any results.

**COPYRIGHT:** © the authors, publisher and licensee Libertas Academica Limited. This is an open-access article distributed under the terms of the Creative Commons CC-BY-NC 3.0 License.

**CORRESPONDENCE:** b.kao@auckland.ac.nz

Paper subject to independent expert blind peer review. All editorial decisions made by independent academic editor. Upon submission manuscript was subject to anti-plagiarism scanning. Prior to publication all authors have given signed confirmation of agreement to article publication and compliance with all applicable ethical and legal requirements, including the accuracy of author and contributor information, disclosure of competing interests and funding sources, compliance with ethical requirements relating to human and animal study participants, and compliance with any copyright requirements of third parties. This journal is a member of the Committee on Publication Ethics (COPE). Provenance: the authors were invited to submit this paper.

Published by Libertas Academica. Learn more about this journal.

## Introduction

*Ganoderma lucidum* is a bitter fungus with a glossy exterior and a woody texture.<sup>1</sup> It is commonly referred to as “lingzhi” in China and has been used in most Asian countries for the promotion of health and longevity for centuries.<sup>1–3</sup> Numerous pharmacological effects associated with lingzhi have been recorded, which include immunomodulating,<sup>4</sup> anti-inflammatory,<sup>5</sup> antitumor,<sup>6–8</sup> radioprotective,<sup>9</sup> antiviral,<sup>10</sup> antioxidative,<sup>6–8</sup> and antiaging<sup>6–8</sup> properties.

Several studies have shown that *G. lucidum* contains a wide range of bioactive compounds associated with the promotion of good health.<sup>1,2,4–14</sup> These bioactive compounds can be extracted via water-based or ethanol-based extraction methods.<sup>8,15</sup> The extraction process is very important for consumption of *G. lucidum* as the fungus is tough and indigestible by humans. There are many ways to consume *G. lucidum*;<sup>8,15</sup> one method of consumption is to submerge the fungus in alcoholic beverages for a prolonged period of time. Since alcoholic beverages contain both water and ethanol components, this method can potentially extract the active ingredients of *G. lucidum* associated with both solvents.<sup>16</sup> Various extracts of *G. lucidum* have been shown to have anticancer effects in both in vivo (mouse model) and in vitro (cancer cell lines) studies.<sup>8,17</sup> These include cytotoxic,<sup>18,19</sup> antimetastatic,<sup>20–22</sup> and immune-modulating<sup>23–26</sup>

effects. Therefore, *G. lucidum* is an interesting plant extract that has been widely used in alternative medicine and<sup>1–3</sup> proven to have numerous implications to be used as a potential anticancer drug; however, still much research needs to be done to quantify it for personalized medicine, especially in treating specific cancers such as prostate cancer (PCa).

Currently, PCa is the most commonly diagnosed cancer in males in Australia and New Zealand and the fifth most common cancer worldwide.<sup>27</sup> Human cell lines are commonly used as models of PCa. There are several commonly available PCa cell lines that differ in their molecular properties. Two PCa cell lines were used in this study: PC3 and DU145. Both are aggressive and androgen-independent forms of PCa, with PC3, and not DU145, still retaining the coregulators required for Androgen-dependent tumor suppression.<sup>28</sup> The aim of this study is to identify any potential anticancer effect of *G. lucidum* extracts in PCa with in vitro cell culture tests. In addition, the biologically active pathways associated with the observed activities were determined using various gene/protein expression analyses, including Affymetrix, real-time polymerase chain reaction (RT-PCR), and Western blotting (WB). WB, the detection of proteins using specific antibodies, has been used to detect the expression levels of specific proteins in tumors after treatment with *G. lucidum*.<sup>29,30</sup>

## Method

**Preparation of *G. lucidum* alcohol extract.** The *G. lucidum* alcohol extracts tested in this study were provided by NZFocus. The extract contained dried *G. lucidum* from the Himalayan region (Fig. 1) submerged in either whiskey (13-year-old single malt scotch whiskey, D. Johnston & Co.) or rice wine (Pearl River Bridge, Guandong PRB Bio-Tech Co.) for six months. *G. lucidum* was then removed from the alcohol extracts. After the extraction processes, the extracts were stored in room temperature in darkness and were then examined for any potential anticancer activity in human PCa cell lines. Controls are listed in Table 1. *G. lucidum* submerged in whiskey or rice wine is referred to as *G. lucidum* whiskey extract (GWh) or *G. lucidum* rice wine extract (GRW), respectively. The positive control used in this study was azathioprine (Sigma-Aldrich). Azathioprine, owing to its property of inhibiting DNA synthesis and cell proliferation,<sup>31,32</sup> is a cytotoxic drug used for the treatment of several diseases, including cancer.

**Cell culture.** Cryopreserved PCa cell lines (DU145-HTB-81<sup>TM</sup>; PC3-CRL-1435<sup>TM</sup>) were purchased from American Type Culture Collection. Experimental work was carried out within three months of cell thawing. The media used and the doubling times of the cell lines are shown in Supplementary Table 1. The cell lines were grown in 25 mL Becton Dickinson Falcon<sup>TM</sup> cell culture flasks (BD Biosciences) at 37°C with 5% CO<sub>2</sub>.

**Growth inhibitory assays.** The cells were harvested when they reached 90% confluence. All cell lines were seeded at a cell density of 2,000 cells/well in 96-well plates (Corning Incorporated) and incubated overnight at 37°C with 5% CO<sub>2</sub> before being treated with the aforementioned extracts (Table 1). The cells were incubated under the same conditions for four doubling cycles. Growth inhibition was measured using the sulforhodamine B-based assay.<sup>33</sup> Using results from the growth inhibition assays, the optimal dosing range was determined. Four technical repeats and two biological repeats were performed. Standard curve analysis was calculated using Sigma plot 11.0 (Systat Software Inc.), and the 50% inhibition of proliferation (IC<sub>50</sub>) values of each extract in each cell line were determined using a standard curve.



**Figure 1.** Wild *G. lucidum* from the Himalayan region grown on the base of deciduous tree. Photo courtesy of NZFocus Ltd.

**RNA extraction, quantitation, and qualification.** The cell lines were treated for four doubling cycles with *G. lucidum* extracts and controls at established IC<sub>50</sub> dosages. Thereafter, RNA was isolated using an RNeasy Plus Mini Kit (Qiagen). The concentration and purity of the RNA samples were assessed using a NanoDrop<sup>®</sup> ND-1000 Spectrophotometer (Thermo Fisher Scientific).

The integrity of the RNA sample was checked using an Agilent 2100 bioanalyzer (Agilent Technologies, Inc.) using facilities at the School of Biological Sciences, The University of Auckland. Each RNA sample had a minimum RNA integrity number of 9.5 or higher, indicating that the RNA samples had not degraded. Technical triplicates were performed per extract per cell line.

**Affymetrix analysis.** The GeneChip<sup>®</sup> PrimeView<sup>TM</sup> Human Gene Expression Array (Affymetrix) was used to measure the gene expression profile of each selected cancer cell line after treatment with the extracts and control solvents. The expression of more than 20,000 genes using 530,000 probes covering 36,000 transcripts and variants was measured.<sup>34</sup> Each probe set contains 20 probes targeting different sequences of the same gene.<sup>34</sup> Three repeats per sample were used for Affymetrix gene expression analysis.

The expression level of genes is associated with the absorbance values of the probes targeting each specific gene.<sup>34</sup> The media-only treatment was considered as a negative control for this study as it represented the normal level of gene expression. The gene expression levels after treatment with GWh or GRW were compared with media-only control to calculate the changes in gene expression as a result of *G. lucidum* treatment using the extracts. Furthermore, the changes in gene expression levels were adjusted with the whiskey-only and rice wine-only controls. This removed the changes in gene expression levels due to the alcohol solvents in the *G. lucidum* extracts.

**Statistical analysis.** R software<sup>35</sup> was used for the analysis of Affymetrix data. Data were normalized using robust multiarray average approach. Significance was calculated using *limma* *t*-statistic with adjustments to alcohol-only control samples. *P*-value was adjusted using “*fdr*” as included in the *limma* package, where *fdr* is the Benjamini and Hochberg’s method to control the false discovery rate.<sup>36</sup>

The data generated from the Affymetrix analysis were filtered based on the level of statistical significance. A pre-specified *P*-value was set at 0.01 for statistical significance. Any probes with an adjusted *P*-value greater than 0.01 after adjustment for alcohol consumption were removed from further analysis. *R* was used for statistical analyses.<sup>37</sup>

After the removal of probes, further analysis was done separately for up- and downregulated genes to investigate these differentially expressed genes. The genes with greater than twofold changes in expression were selected for pathway analyses to help identify the most strongly affected pathways.

Pathway analyses, gene annotation tool to help explain relationships (GATHER) (<http://gather.genome.duke.edu/>),

**Table 1.** Extract treatments and controls used to assess the growth inhibitory potential of *G. lucidum* extracts in PCa cell lines.

TREATMENT/CONTROL TYPE	ABBREVIATION	DESCRIPTION
<i>G. lucidum</i> in whiskey	GWh	In-house extraction method (NZ Focus Ltd).
Whiskey only	WhO	Control for GWh accounting for additional components of whiskey that may have proliferation effects on the cell lines.
<i>G. lucidum</i> in rice wine	GRW	In-house extraction method (NZ Focus Ltd).
Rice wine only	RWO	Control for GRW accounting for additional components of rice wine that may have proliferation effects on the cell lines.
Ethanol	EtOH	Control to account for the ethanol content in the alcoholic beverages tested.
Azathioprine	Aza	Positive control (cell proliferation inhibitor).
Media-only control	Cont	Negative control.

and PathVisio 3.1.2 ([www.pathvisio.org](http://www.pathvisio.org)) were used to determine the association between gene expression levels and biological pathways. GATHER is specialized in determining the strength of association between genes and pathways. PathVisio is specialized in portraying the interactions between genes within the pathways of interest.

**RT-PCR.** RNA was converted to cDNA using a Quantitect Reverse Transcription Kit (Qiagen). The expression levels of 28 genes, based on fold change and pathway analysis, were determined using RT-PCR (Custom TaqMan array card, Thermo Fisher Scientific) in triplicate. *Glyceraldehyde 3-phosphate dehydrogenase (GAPDH)*, *Hypoxanthine-guanine phosphoribosyltransferase (HPRT1)*, and *18S ribosomal RNA (18S)* were used as housekeeping genes for the normalization of RNA expression. PCR was performed with 7900HT thermocycler (Applied Biosystems), and the amplified products were quantified using TaqMan<sup>®</sup> probes (Invitrogen). A standard curve was calculated using comparative Ct analyses with SDS2.3 and RQ Manager 2.2 software from three technical repeats. The relative expression was calculated as fold change using Microsoft Excel (2010). Probes where the range of the maximum and minimum fold change is either >1 or <-1 were considered statistically significant.

**Western blotting.** Protein samples were extracted by adding radioimmunoprecipitation assay buffer to cell culture and placing on ice for 15 minutes. The lysates were centrifuged for 15 minutes at  $14,000 \times g$  at 4°C. Protein concentrations in the lysates were measured using the bicinchoninic acid assay. A total of 20 µg of protein was loaded and electrophoresed on a 12.5% SDS-PAGE Bolt mini gel (Novex Bolt 12% Bis-Tris Plus). Size standards from 3 to 188 kDa (SeeBlue<sup>®</sup> Plus2 Pre-stained Protein Standard Novex) were included in each gel.

After electroblotting, the proteins separated in the gel were transferred to a polyvinylidene difluoride membrane (Bio-Rad) using a semidry Trans-Blot<sup>®</sup> Turbo<sup>™</sup> Blotting System (Bio-Rad). Membranes were stained with Ponceau S solution (Sigma-Aldrich) and then saturated with blocking buffer (5% skim milk powder in 1 × PBS-T) and incubated at room temperature for one hour with gentle rocking.

Membranes were then rinsed in PBS-T and incubated with primary antibody (Ab) (Supplementary Table 2) for one hour at room temperature. Membranes were washed three times in PBS-T and incubated with secondary Ab at 4°C overnight.

Chemiluminescence substrate, Clarity<sup>™</sup> Western-enhanced chemiluminescence (Bio-Rad), was added to the membrane and incubated in the dark for five minutes. The membrane was exposed to UV and the signals were measured using image reader LAS-3000 (Fujifilm). The signal was quantified with Science Lab MultiGauge (Fujifilm).

## Results

**Growth inhibition of the cell lines.** The growth inhibitory properties of *G. lucidum* extracts were investigated using two human PCa cell lines and one noncancerous cell line as a control cell line.

IC<sub>50</sub> dosages of each cell line/extract combination are shown in Table 2. GWh has the strongest inhibition of proliferation, followed by whiskey-only and ethanol-only extracts, which suggests that the *G. lucidum* component in GWh contributes to the inhibition of proliferation. In addition, components in whiskey also showed some inhibition of proliferation, although not as powerful as the GWh. GRW had a stronger inhibitory effect on PC3 than DU145 and showed stronger inhibition than rice wine-only and ethanol-only extracts. The IC<sub>50</sub> dosages calculated using data from both the *G. lucidum* alcohol extracts were found to be higher than those of the alcohol-only extracts in all the cell lines, except DU145. In DU145, the alcohol equivalents showed only slightly lower IC<sub>50</sub> dosages than the *G. lucidum* extracts.

**Affymetrix result.** Affymetrix gene expression analysis has been used to identify several thousand genes with statistically significant changes in their expression levels (Table 3). PC3 and DU145 cell lines showed changes in expression levels of large number of genes associated with GWh treatment, but few changes in gene expression following the administration of GRW. HEK293, used as a control cell line, showed only a small number of genes with significant changes in expression levels following treatment with both *G. lucidum* extracts.





**Table 2.** Dosages required to achieve 50% of maximum inhibition of cell proliferation.

	IC <sub>50</sub> DOSAGES (STANDARD ERROR OF ESTIMATE)		
	PC3		HEK293
	PCa	DU145	NONCANCEROUS CONTROL
Ganoderma whiskey extract	4.52 µl (3.69%)	5.81 µl (3.62%)	9.85 µl (3.53%)
Whiskey only	5.7 µl (1.76%)	4.89 µl (2.18%)	19.14 µl (4.74%)
Ganoderma rice wine extract	1.33 µl (2.99%)	4.99 µl (2.12%)	10.64 µl (1.73%)
Rice wine only	1.71 µl (4.01%)	4.75 µl (1.83%)	18.46 µl (2.88%)
Ethanol	5.38 µl (2.47%)	16.92 µl (1.57%)	>40 µl (0.97%)
Azathioprine	2.05 µg (2.40%)	1.68 µg (1.30%)	3.185 µg (0.83%)

Figure 2 shows all the genes that had statistically significant changes in expression levels after treatment with GWh in PC3 and DU145 cell lines. There are 1,875 genes that have statistically significant changes in expression in both PC3 and DU145 cell lines.

The raw data of Affymetrix gene expression analysis are available at [figshare.com/s/c702649a78ff11e5b39206ec4b8d1f61](https://figshare.com/s/c702649a78ff11e5b39206ec4b8d1f61)

**Pathway analysis using GATHER.** The genes identified to have significant changes in expression levels were submitted to GATHER in order to examine the relationships between the relevant genes and biological pathways. Lists of biological pathways were generated and ranked based on their Bayes factor scores.

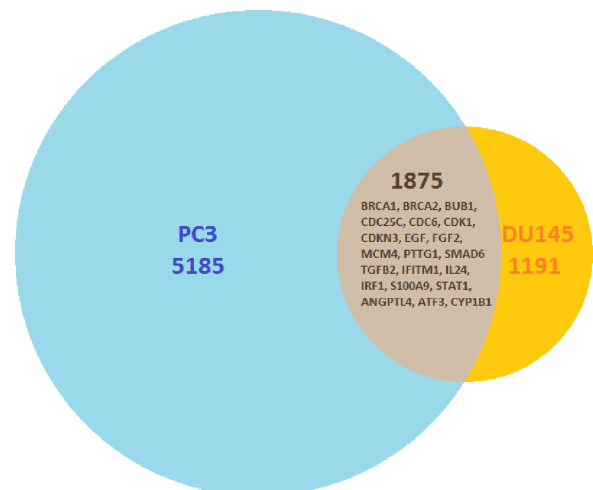
Table 4 shows a list of the significant pathways that were associated with cell cycle, DNA repair, and cancer progression. All cell lines demonstrated statistically significant changes in gene expression levels associated with cell cycle after treatment with GWh. Only PC3, and not DU145 and HEK293, showed strong changes in gene expression associated with DNA repair. All the three tested cell lines showed moderate-to-strong changes in gene expression levels associated with inflammatory response, angiogenesis, antigen presentation, and cell-cell adhesion (Table 4).

**Pathway analysis using PathVisio.** PathVisio is an open-source pathway analysis and visualization software.<sup>38</sup> Using PathVisio 3.1.2 and additional plugins, pathway analysis was performed to determine the strength of association between

pathways and sets of genes. Table 5 shows a list of pathways with significant changes in gene expression after treatment with GWh.

Z-score is another method of presenting statistical association for the strength of association. In Table 5, a Z-score greater than 2 suggests strong association with the pathway. The PCa cell lines used in this study showed a strong association with cell cycle-associated pathways, whereas HEK293, a noncancerous cell line, showed weak or no significant association with the pathways listed (Table 5).

**Biologically active pathways.** The biologically active pathways associated with cancer and cancer progression involve complex interactions of numerous genes. Using GATHER, biologically active pathways with the strongest associations with changes in gene expression are ascertained. Utilization of the PathVisio 3.1.2 program and data from WikiPathways (<http://wikipathways.org/>) allowed us to visualize these biological pathways in combination with



**Figure 2.** Number of genes with statistically significant changes in their expression levels after treatment with *G. lucidum* whiskey extract and adjusted with whiskey-only control. Affymetrix analysis showed that between PC3 and DU145 cell lines, there are 1,875 genes that had statistically significant changes in the expression levels in both cell lines. The overlap lists several genes that had undergone RT-PCR analysis to validate the observed expression.

**Table 3.** Number of genes with statistically significant changes in expression after treatment with GWh extract. All genes shown are after adjustment with whiskey-only and media-only controls.

PC3		DU145	
UP	DOWN	UP	DOWN
<b>Number of genes with a statistically significant fold change (P &lt; 0.05)</b>			
5152	6794	2183	2357
<b>Number of genes with a fold change &gt;2</b>			
598	1668	228	441



**Table 4.** Pathways associated with significant changes in gene expression after treatment with GWh derived using GATHER analysis. Bayes factor greater than 9 (in bold) represents a significant association between biological pathway and treatment of cell lines with GWh extract. Bayes factors between 3 and 9 represent a small but significant association between biological pathway and treatment of cell lines with GWh extract.

	<i>G. lucidum</i> WHISKEY EXTRACT		
	PC3	DU145	HEK293
GO:0007049 [5]: cell cycle	<b>44.81</b>	<b>15.08</b>	<b>23.43</b>
GO:0000074 [6]: regulation of cell cycle	<b>25.52</b>	<b>14.64</b>	<b>9.36</b>
GO:0000082 [7]: G1/S transition of mitotic cell cycle	5.99	1.99	2.05
GO:0006281 [6]: DNA repair	<b>11.02</b>	2.79	5.6
GO:0006260 [6]: DNA replication	<b>16.13</b>	0.25	2.35
GO:0000067 [6]: DNA replication and chromosome cycle	<b>15.3</b>	1.23	2.92
GO:0006298 [7]: mismatch repair	6.1	5.9	6.11
GO:0006954 [5]: inflammatory response	4.58	4.82	<b>17.55</b>
GO:0001525 [6]: angiogenesis	5.68	3.78	5.63
GO:0019882 [5]: antigen presentation	5.68	3.78	5.63
GO:0016337 [5]: cell–cell adhesion	3.88	<b>9.49</b>	3.92

changes in gene expression levels. Figure 3 shows the interactions between the genes associated with cell cycle and the changes in their expression level after treatment with GWh in the PC3 cell line. Almost all genes, including the cyclin-dependent kinases (CDK), involved in cell cycle progression were discovered to be downregulated after treatment with GWh. CDK is a family of proteins crucial for the successful progression of the cell cycle.<sup>39</sup>

Figures 4 and 5 illustrate the interactions between the genes associated with apoptosis. Figure 4 represents the changes in gene expression levels of these genes after treatment with GWh in the PC3 cell line. Figure 5 shows the changes in gene expression in the noncancerous control cell line, HEK293. The genes involved in the apoptotic pathway are either proapoptotic or antiapoptotic. PC3 shows upregulation of proapoptotic genes, including various caspases, while antiapoptotic genes are observed to be downregulated. HEK293 shows downregulation of various proapoptotic genes and upregulation of antiapoptotic genes.

Figure 6 illustrates the interaction between the genes associated with inflammatory and immune response pathways.

**Table 5.** Pathways associated with significant changes in gene expression after treatment with GWh derived using PathVisio. Bold faces represent significant association between pathway and extract.

PATHWAY	ABSOLUTE Z SCORE		
	PC3	DU145	HEK293
DNA replication	<b>4.69</b>	<b>3.7</b>	1.71
Cell cycle	<b>4.46</b>	<b>2.91</b>	1.6
G1 to S cell cycle control	<b>3.79</b>	<b>2</b>	0.75
DNA damage response	<b>3.19</b>	1.75	1.6
Integrated cancer pathway	<b>3.58</b>	0.37	0.53

The changes in gene expression levels in the PC3 cell line after treatment with GWh are also shown in Figure 6. The immune cells affected by these genes are shown in orange text. A strong upregulation of various cytokines associated with activation of a diverse range of immune cells was observed.

**RT-PCR and WB.** The expression levels of different genes obtained from RT-PCR analysis were compared to the gene expression levels obtained from the Affymetrix array analysis. The comparison between gene expression levels obtained from the Affymetrix and RT-PCR assays by treating the PC3 and DU145 PCa cell lines is shown in Table 6. Most genes showed similar changes in expression levels between RT-PCR and Affymetrix analysis, with the exception of CDKN3 in DU145 cell line that had upregulated expression in RT-PCR analysis but downregulated expression in Affymetrix.

In addition, the protein expression levels were determined by WB. Figure 7 shows the WB bands after treatment with GWh, WhO, and media. Thicker bands representing greater levels of protein can be observed in the figure. Therefore, if GWh-treated bands are thicker than their media-only counterparts, the protein expression levels of the corresponding genes are stimulated by GWh. For all the genes tested, their changes in protein expression levels are in the same direction as their gene expression changes (Fig. 8).

## Discussion

**Cell culture.** Both the *G. lucidum* extracts tested showed significant growth inhibitory effects on both cancer cell lines (Table 2). At 50% growth inhibition dosages of the GWh and GRW, their respective solvents also showed smaller but observable growth inhibition (Table 2). This suggests that the alcoholic solvents also contributed to the observed growth

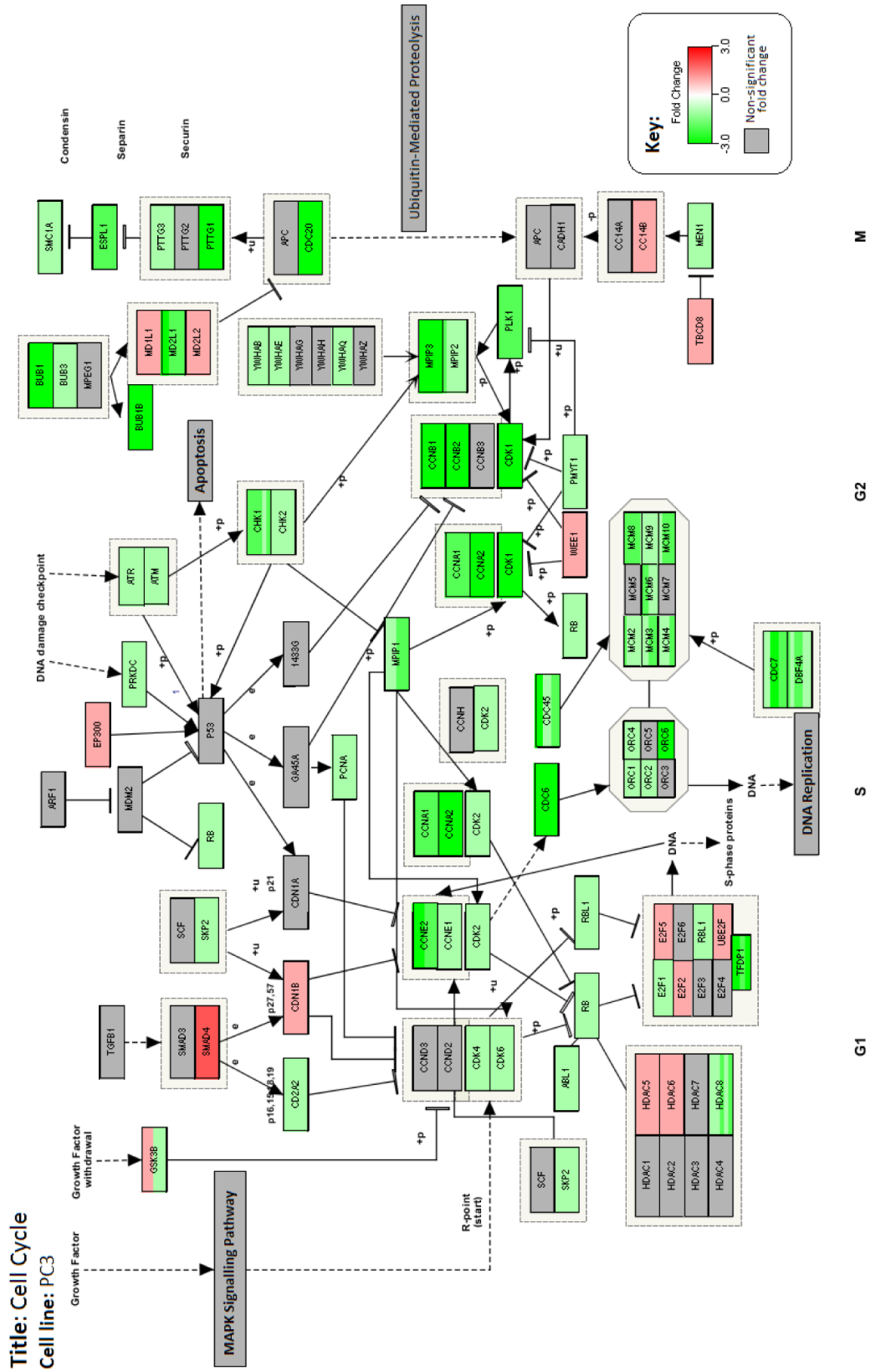
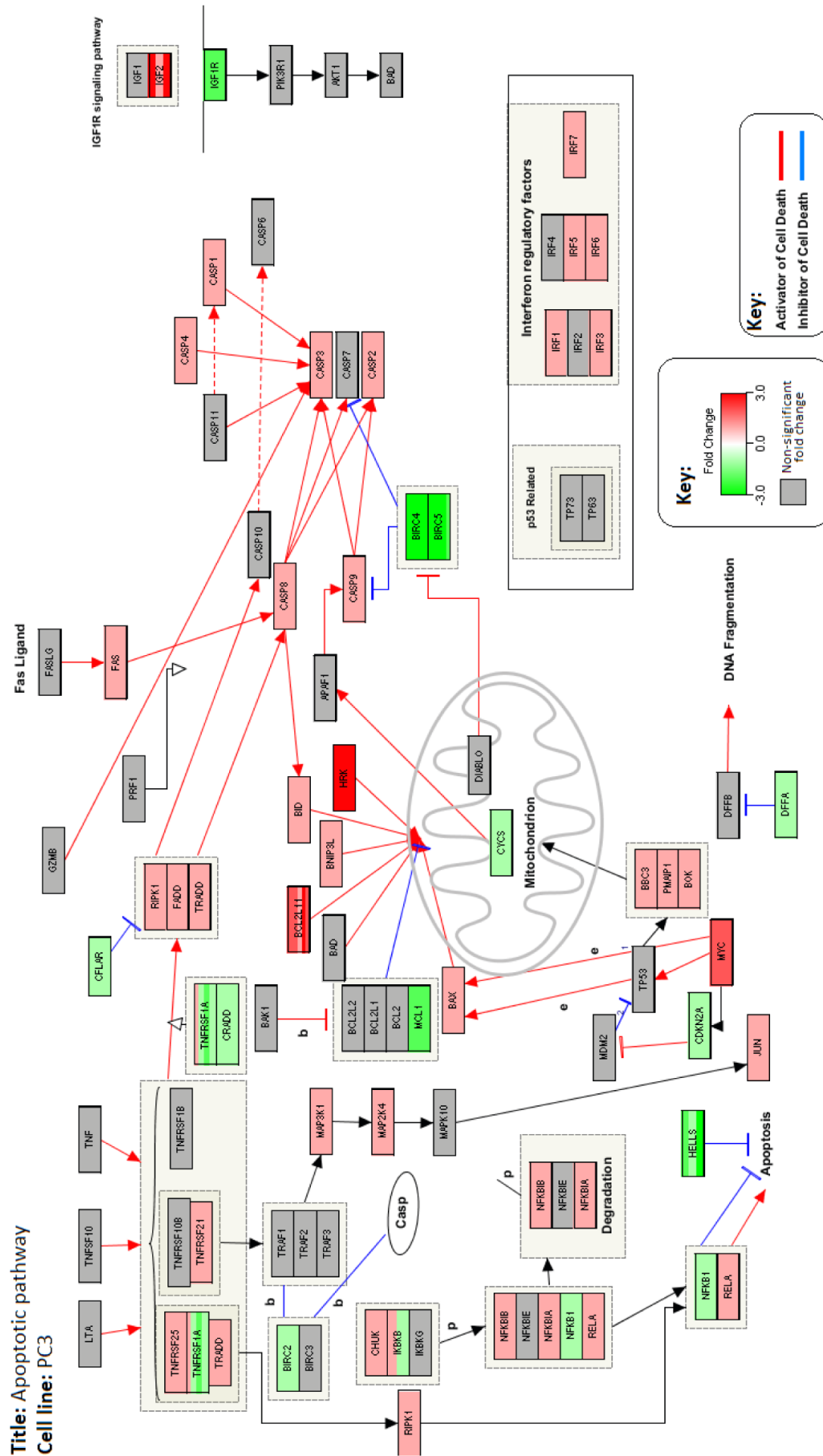
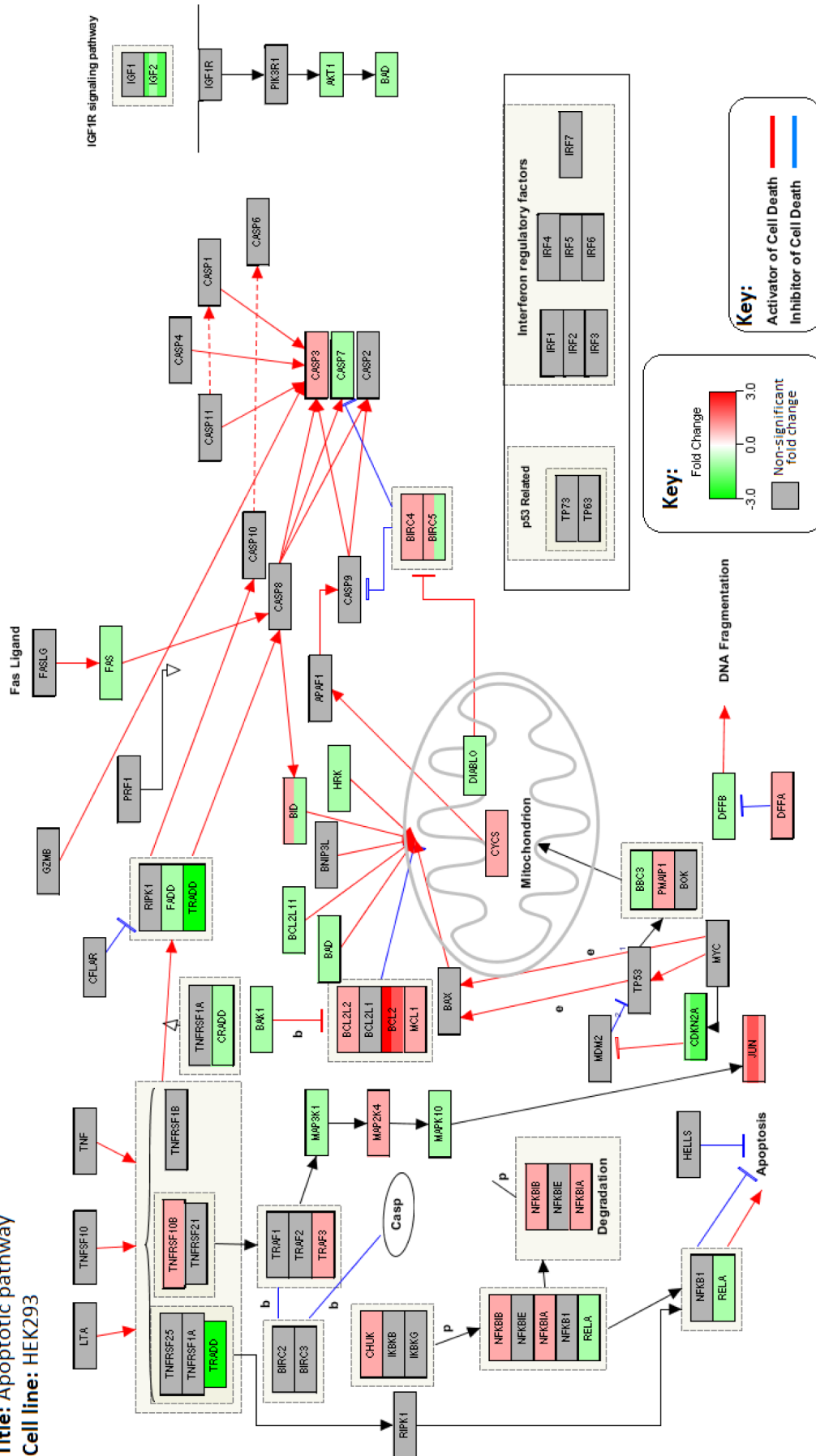


Figure 3. Changes in the expression levels of genes associated with cell cycle pathway in PC3 cell line after treatment with *G. lucidum* whiskey extract. Downregulated genes are highlighted in green and upregulated genes are highlighted in red.



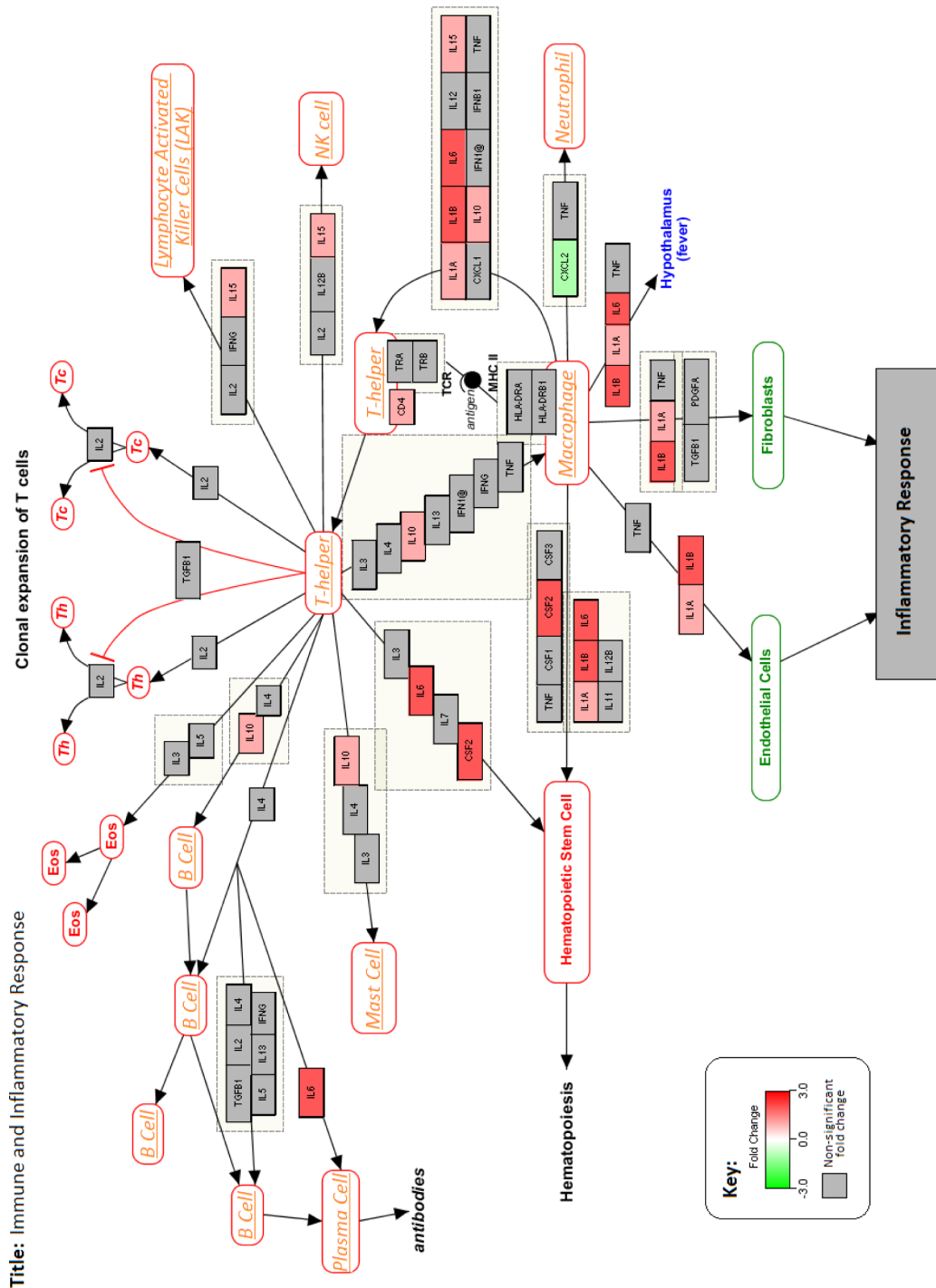
**Figure 4.** Changes in the expression levels of genes associated with apoptotic pathway in PC3 cell line after treatment with *G. lucidum* whiskey extract adjusted with whiskey-only control. Downregulated genes are highlighted in green and upregulated genes are highlighted in red. Red colored lines indicate interactions that promote apoptosis. Blue colored lines indicate interactions that inhibit apoptosis.

**Title:** Apoptotic pathway  
**Cell line:** HEK293



**Figure 5.** Changes in the expression levels of genes associated with apoptotic pathway in HEK293 cell line after treatment with *G. lucidum* whiskey extract adjusted with whiskey-only control. Downregulated genes are highlighted in green and upregulated genes are highlighted in red. Red colored lines indicate interactions that promote apoptosis. Blue colored lines indicate interactions that inhibit apoptosis.



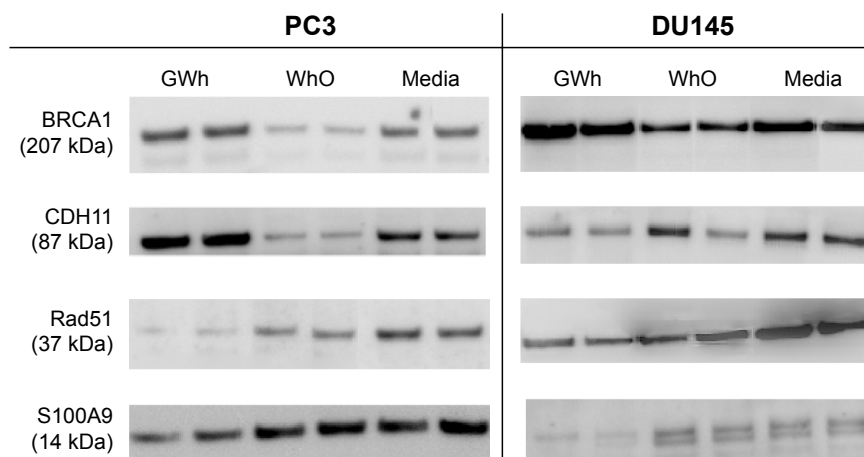


**Figure 6.** Changes in the expression levels of genes associated with inflammatory cytokines in PC3 cell line after treatment with *G. lucidum* whiskey extract adjusted with whiskey-only control. Downregulated genes are highlighted in green and upregulated genes are highlighted in red.

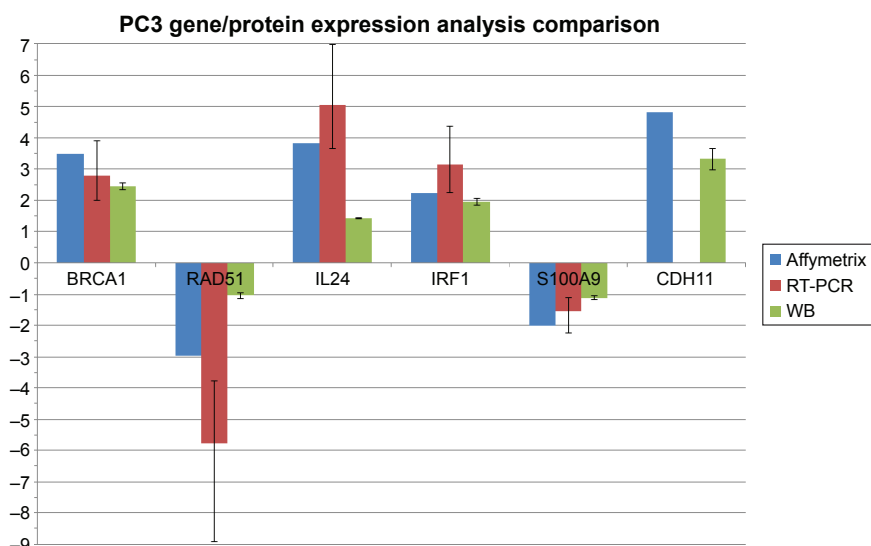


**Table 6.** Comparison of the changes in the fold change of gene expression levels after treatment with *G. lucidum* whiskey extract between Affymetrix and RT-PCR. The genes are separated into different biological pathways as classified by GATHER genome and WikiPathways. Red = upregulated; Green = downregulated.

PATHWAYS	GENES	PC3		DU145	
		AFFYMETRIX	RT-PCR	AFFYMETRIX	RT-PCR
Cell cycle and apoptosis	<i>BIRC5</i>	-5.03	-27.03	-	1.1
	<i>BRCA1</i>	3.49	2.79	2.37	3.45
	<i>BRCA2</i>	2.92	1.5	1.66	3.35
	<i>BUB1</i>	-5.79	-3.94	1.4	1.84
	<i>CCNA2</i>	-17.07	-15.38	-	1.64
	<i>CDC20</i>	-8.08	-5.38	-	1.14
	<i>CDC25C</i>	-4.6	-9.26	-1.09	-1.08
	<i>CDC6</i>	-9.88	-2.98	-1.81	-2.35
	<i>CDK1</i>	-13.02	-8.93	1.65	1.69
	<i>CDKN3</i>	-6.57	-3.61	-1.26	1.37
	<i>EGF</i>	-1.76	-2.86	-2.02	-3.31
	<i>FGF2</i>	2.03	3.05	2.23	2.41
	<i>MCM4</i>	-2.4	1.3	-1.84	1.74
	<i>PLK1</i>	-2.39	-7.81	-	1.04
	<i>PTTG1</i>	-6.88	-6.85	-1.24	-1.26
	<i>RAD51</i>	-2.98	-5.78	-	-2.33
	<i>SMAD6</i>	-2.3	-1.12	-2	-1.66
	<i>TGFB2</i>	-2.15	1.31	-4.65	-1.22
Immune and inflammation	<i>IFITM1</i>	3.6	1.46	-8.12	-11.76
	<i>IL24</i>	3.83	5.05	9.35	16.57
	<i>IRF1</i>	2.24	3.14	2.34	2.06
	<i>S100A9</i>	-2.02	-1.56	-4.27	-4.39
	<i>STAT1</i>	-2.44	1.4	-1.4	-1.06
Metastasis and tumor progression	<i>ANGPTL4</i>	2.99	16.49	3.73	9.29
	<i>ATF3</i>	2.03	5.93	2.44	2.25
	<i>CDH11</i>	4.8	-	-	-
	<i>CYP1B1</i>	4.28	18.39	2.76	4.49
	<i>SOX4</i>	2.05	8.18	-	2.32



**Figure 7.** Western blot analysis of protein expression levels in PC3 and DU145 cell lines after treatment with GWh, WhO, and media only (no treatment control).



**Figure 8.** Comparison of the fold changes in gene/protein expression levels of six genes and their related proteins in PC3 cell lines after treatment with *G. lucidum* whiskey extract. Affymetrix and RT-PCR analyses were used for the measurement of gene expression levels and Western blotting was used for the measurement of protein expression levels.

inhibitions. Studies have found that malt whiskey may potentially inhibit cancer development by increasing the antioxidant content in humans.<sup>40,41</sup> When adjusted for the liquor-only counterpart, *G. lucidum* still showed strong observable growth inhibitory properties in both the cancerous cell lines. This suggests that *G. lucidum* extracts have growth inhibitory effects in cancer cell lines and may have potential anticancer properties.

Most biologically active compounds in *G. lucidum* can be extracted with water or ethanol.<sup>8,15,42</sup> It is possible that GRW and GWh contain active ingredients of both *G. lucidum* water- and ethanol-based extracts, as both types of liquors contain ethanol and water solvents. Therefore, consuming *G. lucidum* liquor extracts may potentially have a more valuable effect than using only ethanol-based or water-based extracts for use as an anticancer agent.

**Affymetrix gene expression analysis.** Our results indicate that over 11,000 genes have statistically significant changes in their expression levels after treatment with GWh and GRW. This is suggestive of the fact that *G. lucidum* extracts have a wide range of effects. Unlike traditional anticancer drugs that target single pathways, *G. lucidum* extracts consist of a number of components that can potentially exert their anticancer activities through multiple biologically active pathways. This is important because tumor cells can mutate rapidly and develop immunity to drugs that target a single pathway.<sup>43</sup>

GWh demonstrated a strong influence on gene expression in the two PCa cell lines tested. Relatively few significant changes in gene expression were detected after treatment with GRW. This is consistent with the observation that the IC<sub>50</sub> dosages of GRW and rice wine-only extracts (Table 2) were similar.

In addition, GWh has influenced the gene expression levels in the noncancerous cell line, which suggests that GWh can have an effect on healthy cell lines. In the noncancerous cell line, pathway analysis showed that the genes that promote apoptosis were downregulated and the genes that inhibit apoptosis were upregulated by *G. lucidum* extract. This effect is observed only in the control noncancerous cell line, which suggests that the observed effects may promote survival in healthy cells. This observation corresponds with the studies conducted by Cherian et al and Ajith et al, who showed that *G. lucidum* promotes longevity.<sup>44,45</sup>

**Pathway analysis.** The development of cancerous cells is a multistep process involving normal cells, acquiring several hallmarks of cancer to evolve to a neoplastic state.<sup>43</sup> These biological capabilities of malignant cells can be targeted for the treatment of cancer.

Treatment with *G. lucidum*-based extracts resulted in changes in the gene expression levels of various genes associated with a number of different biologically active pathways (Tables 4 and 5). The use of the Affymetrix array permitted the simultaneous characterization of the expression levels of a large number of genes. This aided in the examination and discovery of biologically active pathways associated with the anticancer activity of *G. lucidum*.

**Cell cycle and apoptosis.** Treatment of cancerous cell lines with *G. lucidum* extracts resulted in changes in gene expression associated with cell cycle and DNA replication. Cell cycle is a process by which cells divide and proliferate; thus, in order to control the deregulated growth of cancer cells,<sup>43</sup> various anticancer compounds, for example, flavonoids and paullones, can be used that act by inhibiting the cell cycle pathway.<sup>46</sup> However, drugs that inhibit DNA replication, such as azathioprine, fail to completely eradicate cancer cells



and are often not only associated with a high level of toxicity but can also lead to the development of drug resistance in cancer cells.<sup>47</sup>

Affymetrix array analysis and pathway analysis were used to identify genes associated with cell cycle control. Genes such as the *CDKs*, which are upregulated during cell cycle in normal and cancerous cells,<sup>39</sup> were found to be downregulated after treatment with GWh in PCa cell lines (Table 6). This indicates that the amount of cells undergoing cell cycle progression is decreased, which contributes to the observed growth inhibitory effects.

Apoptosis is important for the maintenance of multicellular life. It allows cells to initiate controlled cell death for the benefit of the organism as a whole by removal of older, less efficient cells and elimination of damaged and/or virally infected cells.<sup>48,49</sup> Cancer cells deregulate apoptosis either through the overexpression of antiapoptotic proteins or through the action of mutations that reduce the efficiency of or completely remove proapoptotic proteins.<sup>48,49</sup> The final process of apoptosis involves the activation of a series of caspases known as the caspase cascade.<sup>18,19</sup> In the PC3 cell line treated with GWh, the gene expression levels of the proapoptotic caspases are found to be upregulated, which suggests the activation of the caspase cascade that would in turn trigger apoptosis. The activation of the caspase cascade with *G. lucidum* extracts has been observed in other studies involving various cancer cell lines, including oral mucosal cancer and colorectal cancer.<sup>14,15</sup> This effect seems to be cancer specific as it was not observed in the noncancerous control cell line, HEK293. This is important to note as various cytotoxic drugs that promote apoptosis in cancer cells can also cause apoptosis in healthy cells, which contributes to the acute side effects observed from cytotoxic drugs.<sup>50</sup> The observation that the apoptotic effect of GWh is cancer specific suggests that it may be used specifically for cancer therapy without producing severe toxicity in humans.

In HEK293 cell line, GWh increased the expression of antiapoptotic genes such as *CDK1*. This suggests that GWh may promote cell survival in healthy, noncancerous cells and may contribute to the antiaging health benefits associated with *G. lucidum*. This finding is consistent with studies that have reported *G. lucidum* to promote antioxidant activities and reduce aging.<sup>44,45</sup> The observed protective effects of *G. lucidum* in healthy cells can be used in conjunction with cytotoxic drugs, as it reduces the apoptotic rate of normal cells triggered by cytotoxic drugs,<sup>9,26</sup> and thus may offer a higher level of protection for normal cells.

**Tumor immunity and progression.** Inflammation and immunity are two closely linked biological pathways.<sup>51</sup> Both pathways play a key role in the development and progression of tumors.<sup>52</sup> Various studies have found that *G. lucidum* polysaccharide extracts can promote the immune system, in particular, antitumor immunity that promotes immune-mediated killing of tumor cells.<sup>23–26</sup> Using the GATHER

pathway analysis, we found that GWh influenced the genes associated with the inflammatory and immune response (Fig. 6), in particular, the upregulation of genes associated with the activation of T-helper lymphocytes that are required to mount an effective immune response.<sup>53</sup> Therefore, *G. lucidum* extracts may potentially promote immunity via stimulation of T-helper cells. However, as the cell lines used are not immune cells, additional studies using immune cells will be required to assess if *G. lucidum* extracts have immune-activating abilities.

Furthermore, we identified that treatment with *G. lucidum* extracts affects cell–cell adhesion and angiogenesis.<sup>54,55</sup> Cell–cell adhesion involves the expression of proteins on the surface of the cell and controls the attachment of one cell to another. Strong cell–cell adhesion reduces the risk of tumor cell detachment and, thus, reduces the risk of metastasis. A cell–cell adhesion protein CDH11 was found to have increased in expression after treatment with *G. lucidum* extracts. The increased CDH11 expression could promote cell–cell adhesion and reduce the risk of metastasis via cell detachment.<sup>56</sup>

Angiogenesis is a physiological process that involves the development of new blood vessels from preexisting vessels.<sup>57</sup> Tumor angiogenesis promotes tumor expansion by supplying essential nutrients and oxygen, and the increased blood flow increases the risk of metastasis. Thus, the suppression of these properties will decrease tumor invasive behaviors and reduce the risk of metastasis.<sup>20–22</sup>

#### Gene expression comparison with protein expression.

We compared the expression levels of the 28 genes obtained by RT-PCR analysis with those obtained by Affymetrix array analysis to validate the accuracy of the Affymetrix analysis and assess the chance of false positives (ie, type-1 errors). Additionally, we selected 6 genes from the 28 tested genes in RT-PCR and performed WB to determine if the changes in gene expression were translated to changes in their protein expression levels. The six selected genes are *BRCA1*, *Rad51*, *CDH11*, *IL24*, *IRF1*, and *S100A9*, which have statistically significant differences in their gene expression levels.

*BRCA1* and *Rad51* are tumor suppressor genes. *BRCA1* plays a major role in DNA damage repair and in the control of cell cycle.<sup>58</sup> In PCa, *BRCA1* directly interacts with androgen receptors and induces the expression of cyclin-dependent kinase inhibitors, leading to inhibition of cell cycle and apoptosis.<sup>59,60</sup> Affymetrix and RT-PCR analyses showed upregulation of *BRCA1* gene expression in both PC3 and DU145 cell lines (Table 6). In addition, WB showed increased expression of protein expression levels that matches the increased gene expression levels (Table 6).

*Rad51* is involved in the repair of DNA double-strand breakages.<sup>61</sup> Overexpression of *Rad51* results in a range of consequences, including increased resistance to DNA damaging agents, disruption of the cell cycle, and increased apoptotic cell death.<sup>61</sup> Overexpression of *Rad51* is also associated with





aggressive PCa.<sup>62</sup> After treatment with GWh, *Rad51* gene expression was found to be downregulated in PC3 cells in both Affymetrix and RT-PCR analysis. WB also showed a decrease in the expression of Rad51 protein. In the DU145 cell line, Affymetrix analysis did not show any significant decrease in *Rad51* gene expression after treatment with GWh. Nevertheless, RT-PCR and WB showed a decrease in the expression levels of *Rad51* gene and protein, respectively (Table 6).

In the PC3 cell line, Affymetrix analysis showed increased *CDH11* gene expression after treatment with GWh. However, RT-PCR failed to detect *CDH11* expression levels in both PC3 and DU145 cell lines. *CDH11* is involved in cell–cell adhesion and its increased expression in tumors is associated with a reduced risk of metastasis.<sup>56</sup> WB showed an increase in the expression of *CDH11* protein after the treatment. This suggests that, even though RT-PCR failed to detect any expression, CDH11 levels are still positively increased by the treatment with *G. lucidum* extracts.

Protein expression of the gene *S100A9* was found to be downregulated by GWh treatment in both PC3 and DU145 cell lines. The same *S100A9* is overexpressed in many cancer types such as breast, prostate, and lung cancers.<sup>63</sup> Its expression is further upregulated by hypoxia, which is also common in tumors.<sup>64</sup> Therefore, the observed downregulation of *S100A9* gene expression can potentially reduce inflammation. Other studies have also found that *G. lucidum* extracts can downregulate proinflammatory cytokines; however, an alcohol form of *G. lucidum* extract had not been tested previously.<sup>65–67</sup>

Both the gene and protein expression levels of *IL24* and *IRF1* are upregulated after treatment with GWh (Table 6). The genes *IL24* and *IRF1* have tumor suppressive capabilities that are associated with the Janus-activated kinase (JAK)/signal transducers and activators of transcription (STAT) signaling.<sup>68,69</sup> The JAK/STAT signaling pathway is crucial in the cytokine-mediated immune response and is involved in proliferation and apoptosis.<sup>70</sup> *IL24* can also induce apoptosis mediated through mitogen-activated protein kinase (MAPK) pathways.<sup>71</sup> *IL24* has been shown to induce apoptosis in various cancer cell lines.<sup>72</sup> Upregulation of *IL24* and *IRF1* has antiproliferative effects in breast and colorectal cancers.<sup>73–76</sup> This suggests that GWh can inhibit tumor proliferation and promote antitumor response through JAK/STAT and MAPK signaling pathways.

## Conclusion

For the first time, the growth inhibitory activities of two *G. lucidum* liquor-based extracts, namely, GWh and GRW, in human PCa cell lines and one noncancerous control cell line have been tested. We observed that GWh and GRW have positive growth inhibitory effects on cancerous cell lines. The growth inhibitory effects are stronger in *G. lucidum* extracts than their liquor-only counterparts. This shows that *G. lucidum*, when extracted using whiskey and rice wine, has growth inhibitory properties in cancer cells.

In addition, 28 genes and six proteins were selected based on the result of Affymetrix analysis and tested using RT-PCR and WB, respectively. We found that in the PCa cell lines, the gene expression levels were consistent between Affymetrix and RT-PCR analyses. Furthermore, WB showed that the protein expression levels were found to correspond to their respective gene expression levels. The results from the gene and protein expression analyses showed that the expression levels of the selected genes are strongly affected by treatment with GWh at both RNA and protein levels.

Using gene and pathway analyses, we identified several biologically active pathways, including the apoptotic pathway associated with anticancer activities of GWh in PC3 and DU145 cell lines. The potential anticancer effects of *G. lucidum* include inhibition of cell cycle, induction of apoptosis, and reduction of tumor progression. The biologically active pathways associated with both ethanol and water extracts of *G. lucidum* were observed in response to GWh treatment, which suggests that GWh contains active ingredients from both water and ethanol components.

Future studies should focus on using metabolomic analysis to identify the active ingredients in the *G. lucidum* extracts. In addition, this study investigated the effect of *G. lucidum* in a cell line model. Further studies should be based on an animal model that would allow for the examination of the bioavailability of *G. lucidum* extracts and the complex interactions within the tumor microenvironment.

## Acknowledgment

The authors acknowledge The University of Auckland for providing access to the resources necessary for the completion of this study.

## Author Contributions

Designed the study: CK, KB, and LF. Carried out the cell culture study: CK. Provided statistical support: DH. Participated in RNA extraction and RT-PCR analysis: PM and YX. Participated in RNA Agilent 2100 bioanalyzer analysis and preparation for Affymetrix gene expression analysis: GM and YX. Drafted and made critical revisions of the manuscript: CK and KB. All the authors commented on the manuscript, read, and approved the final version.

## REFERENCES

1. Paterson RR. Ganoderma—a therapeutic fungal biofactory. *Phytochemistry*. 2006; 67(18):1985–2001.
2. Kao CHJ, Jesuthasan AC, Bishop KS, Glucina MP, Ferguson LP. Anti-cancer activities of *Ganoderma lucidum*: active ingredients and pathways. *FFHD*. 2013;3(2):48–65.
3. Valverde ME, Hernández-Pérez T, Paredes-López O. Edible mushrooms: improving human health and promoting quality life. *Int J Microbiol*. 2015;2015: 376387.
4. Lin ZB. Cellular and molecular mechanisms of immuno-modulation by *Ganoderma lucidum*. *J Pharmacol Sci*. 2005;99(2):144–153.
5. Ko HH, Hung CF, Wang JP, Lin CN. Antiinflammatory triterpenoids and steroids from *Ganoderma lucidum* and *G. tsugae*. *Phytochemistry*. 2008;69(1): 234–239.



6. Sanodiya BS, Thakur GS, Baghel RK, Prasad GB, Bisen PS. *Ganoderma lucidum*: a potent pharmacological macrofungus. *Curr Pharm Biotechnol*. 2009;10(8):717–742.
7. Jong SC, Birmingham JM. Medicinal benefits of the mushroom *Ganoderma*. *Adv Appl Microbiol*. 1992;37:101–134.
8. Wachtel-Galor S, Yuen J, Buswell JA, Benzie IFF. *Ganoderma lucidum* (Lingzhi or Reishi): a medicinal mushroom. In: Benzie IFF, Wachtel-Galor S, eds. *Herbal Medicine: Biomolecular and Clinical Aspects*. 2nd ed. Boca Raton: CRC Press; 2011:53–76.
9. Smina TP, De S, Devasagayam TPA, Adhikari S, Janardhanan KK. *Ganoderma lucidum* total triterpenes prevent radiation-induced DNA damage and apoptosis in splenic lymphocytes *in vitro*. *Mutat Res Genet Toxicol Environ Mutagen*. 2011;726(2):188–194.
10. Zhang W, Tao J, Yang X, et al. Antiviral effects of two *Ganoderma lucidum* triterpenoids against enterovirus 71 infection. *Biochem Biophys Res Commun*. 2014;449(3):307–312.
11. Kim YS, Eo SK, Oh KW, Lee C, Han SS. Antiherpetic activities of acidic protein bound polysaccharide isolated from *Ganoderma lucidum* alone and in combinations with interferons. *J Ethnopharmacol*. 2000;72(3):451–458.
12. Zhang J, Tang Q, Zimmerman-Kordmann M, Reutter W, Fan H. Activation of B lymphocytes by GLIS, a bioactive proteoglycan from *Ganoderma lucidum*. *Life Sci*. 2002;71(6):623–638.
13. Lu H, Kyo E, Uesaka T, Katoh O, Watanabe H. A water-soluble extract from cultured medium of *Ganoderma lucidum* (Rei-shi) mycelia suppresses azoxymethane-induction of colon cancers in male F344rats. *Oncol Rep*. 2003;10(2):375–379.
14. Thyagarajan A, Jedinak A, Nguyen H, et al. Triterpenes from *Ganoderma lucidum* induce autophagy in colon cancer through the inhibition of p38 mitogen-activated kinase (p38 MAPK). *Nutr Cancer*. 2010;62(5):630–640.
15. Gao Y, Zhang R, Zhang J, et al. Study of the extraction process and *in vivo* inhibitory effect of ganoderma triterpenes in oral mucosa cancer. *Molecules*. 2011;16(7):5315–5332.
16. Niksic M, Nikicevic N, Tesevic V, Klaus A. Evaluation of Alcoholic Beverages Based on *Ganoderma lucidum* (Curt.: Fr.) P. Karst. Extract. *Int J Med Mushrooms*. 2001;3(2–3):1.
17. Cheng S, Sliva D. *Ganoderma lucidum* for cancer treatment: we are close but still not there. *Integr Cancer Ther*. 2015;14(3):249–257.
18. Liu RM, Li YB, Zhong JJ. Cytotoxic and pro-apoptotic effects of novel ganoderic acid derivatives on human cervical cancer cells *in vitro*. *Eur J Pharmacol*. 2012;681(1–3):23–33.
19. Liu RM, Zhong JJ. Ganoderic acid Mf and S induce mitochondria mediated apoptosis in human cervical carcinoma HeLa cells. *Phytomedicine*. 2011;18(5):349–355.
20. Jiang J, Grieb B, Thyagarajan A, Sliva D. Ganoderic acids suppress growth and invasive behavior of breast cancer cells by modulating AP-1 and NF-kappaB signaling. *Int J Mol Med*. 2008;21(5):577–584.
21. Wu GS, Song YL, Yin ZQ, et al. Ganoderiol A-enriched extract suppresses migration and adhesion of MDA-MB-231 cells by inhibiting FAK-SRC-paxillin cascade pathway. *PLoS One*. 2013;8(10):e76620.
22. Loganathan J, Jiang J, Smith A, et al. The mushroom *Ganoderma lucidum* suppresses breast-to-lung cancer metastasis through the inhibition of pro-invasive genes. *Int J Oncol*. 2014;44(6):2009–2015.
23. Li A, Shuai X, Jia Z, et al. *Ganoderma lucidum* polysaccharide extract inhibits hepatocellular carcinoma growth by downregulating regulatory T cells accumulation and function by inducing microRNA-125b. *J Transl Med*. 2015;13:100.
24. Kim H, Suh HJ, Kang CM, Lee KH, Hwang JH, Yu KW. Immunological activity of ginseng is enhanced by solid-state culture with *Ganoderma lucidum* mycelium. *J Med Food*. 2014;17(1):150–160.
25. Wang SY, Hsu ML, Hsu HC, et al. The anti-tumor effect of *Ganoderma lucidum* is mediated by cytokines released from activated macrophages and T lymphocytes. *Int J Cancer*. 1997;70(6):699–705.
26. Chen WC, Hau DM. Effects of *Ganoderma lucidum* on cellular immunocompetence in gamma-irradiated mice. *Phytother Res*. 1995;9(7):533–535.
27. Ferlay J, Soerjomataram I, Dikshit R, et al. Cancer incidence and mortality worldwide: sources, methods and major patterns in GLOBOCAN 2012. *Int J Cancer*. 2015;136(5):E359–E386.
28. Litvinov IV, Antony L, Dalrymple SL, Becker R, Cheng L, Isaacs JT. PC3, but not DU145, human prostate cancer cells retain the coregulators required for tumor suppressor ability of androgen receptor. *Prostate*. 2006;66(12):1329–1338.
29. Yang G, Yang L, Zhuang Y, Qian X, Shen Y. *Ganoderma lucidum* polysaccharide exerts anti-tumor activity via MAPK pathways in HL-60 acute leukemia cells. *J Recept Signal Transduct Res*. 2014;20:1–8.
30. Martinez-Montemayor MM, Acevedo RR, Otero-Franqui E, Cubano LA, Dharmawardhane SF. *Ganoderma lucidum* (Reishi) inhibits cancer cell growth and expression of key molecules in inflammatory breast cancer. *Nutr Cancer*. 2011;63(7):1085–1094.
31. Relling MV, Hancock ML, Boyett JM, Pui CH, Evans WE. Prognostic importance of 6-mercaptopurine dose intensity in acute lymphoblastic leukemia. *Blood*. 1999;93(9):2817–2823.
32. Hawwa AF, Millership JS, Collier PS, et al. Pharmacogenomic studies of the anticancer and immunosuppressive thiopurines mercaptopurine and azathioprine. *Br J Clin Pharmacol*. 2008;66(4):517–528.
33. Skehan P, Storeng R, Scudiero D, et al. New colorimetric cytotoxicity assay for anticancer-drug screening. *J Natl Cancer Inst*. 1990;82(13):1107–1112.
34. Auer H, Newsom DL, Kornacker K. Expression profiling using affymetrix GeneChip microarrays. *Methods Mol Biol*. 2009;509:35–46.
35. R Development Core Team (2010), R: A Language and Environment for Statistical Computing. Vienna, Austria: the R Foundation for Statistical Computing. ISBN: 3-900051-07-0. Available online at <http://www.R-project.org/>.
36. Smyth GK. Limma: linear models for microarray data. In: Gentleman R, Carey V, Huber W, Irizarry R, Dudoit S, eds. *Bioinformatics and Computational Biology Solutions Using R and Bioconductor*. New York: Springer; 2005:397–420.
37. R Development Core Team (2013), R: A Language and Environment for Statistical Computing. Vienna, Austria: the R Foundation for Statistical Computing. ISBN: 3-900051-07-0. Available online at <http://www.R-project.org/>.
38. Friedl JY, van Iersel MP, Aladjem MI, Kohn KW, Luna A. PathVisio-faceted search: an exploration tool for multi-dimensional navigation of large pathways. *Bioinformatics*. 2013;29(11):1465–1466.
39. Besson A, Dowdy SF, Roberts JM. CDK inhibitors: cell cycle regulators and beyond. *Dev Cell*. 2008;14(2):159–169.
40. Duthie GG, Pedersen MW, Gardner PT, et al. The effect of whisky and wine consumption on total phenol content and antioxidant capacity of plasma from healthy volunteers. *Eur J Clin Nutr*. 1998;52(10):733–736.
41. Pandey KB, Rizvi SI. Plant polyphenols as dietary antioxidants in human health and disease. *Oxid Med Cell Longev*. 2009;2(5):270–278.
42. Sheng S. The urokinase-type plasminogen activator system in prostate cancer metastasis. *Cancer Metastasis Rev*. 2001;20(3–4):287–296.
43. Hanahan D, Weinberg RA. Hallmarks of cancer: the next generation. *Cell*. 2011;144(5):646–674.
44. Cherian E, Sudheesh NP, Janardhanan KK, Patani G. Free-radical scavenging and mitochondrial antioxidant activities of Reishi-*Ganoderma lucidum* (Curt: Fr) P. Karst and arogyapacha-trichopus zeylanicus gaertn extracts. *J Basic Clin Physiol Pharmacol*. 2009;20(4):289–307.
45. Ajith TA, Sudheesh NP, Roshny D, Abishek G, Janardhanan KK. Effect of *Ganoderma lucidum* on the activities of mitochondrial dehydrogenases and complex I and II of electron transport chain in the brain of aged rats. *Exp Gerontol*. 2009;44(3):219–223.
46. Vermeulen K, Van Bockstaele DR, Berneman ZN. The cell cycle: a review of regulation, deregulation and therapeutic targets in cancer. *Cell Prolif*. 2003;36(3):131–149.
47. Chan KS, Koh CG, Li HY. Mitosis-targeted anti-cancer therapies: where they stand. *Cell Death Dis*. 2012;3:e411.
48. Ouyang L, Shi Z, Zhao S, et al. Programmed cell death pathways in cancer: a review of apoptosis, autophagy and programmed necrosis. *Cell Prolif*. 2012;45(6):487–498.
49. Guerra-Vladusic FK, Scott G, Weaver V, et al. Constitutive expression of Hergeulin induces apoptosis in an erbB-2 overexpressing breast cancer cell line SKBr-3. *Int J Oncol*. 1999;15(5):883–892.
50. Blagosklonny MV. Analysis of FDA approved anticancer drugs reveals the future of cancer therapy. *Cell Cycle*. 2004;3(8):1035–1042.
51. Kazma R, Mefford JA, Cheng I, et al. Association of the innate immunity and inflammation pathway with advanced prostate cancer risk. *PLoS One*. 2012;7(12):e51680.
52. Grivennikov SI, Greten FR, Karin M. Immunity, inflammation, and cancer. *Cell*. 2010;140(6):883–899.
53. Kennedy R, Celis E. Multiple roles for CD4+ T cells in anti-tumor immune responses. *Immunol Rev*. 2008;222:129–144.
54. Bendas G, Borsig L. Cancer cell adhesion and metastasis: selectins, integrins, and the inhibitory potential of heparins. *Int J Cell Biol*. 2012;2012:676731.
55. Schettino C, Bareschino MA, Rossi A, et al. Targeting angiogenesis for treatment of NSCLC brain metastases. *Curr Cancer Drug Targets*. 2012;12(3):289–299.
56. Marchong MN, Yurkowski C, Ma C, Spencer C, Pajovic S, Gallie BL. Cdh11 acts as a tumor suppressor in a murine retinoblastoma model by facilitating tumor cell death. *PLoS Genet*. 2010;6(4):e1000923.
57. Kubota Y. Tumor angiogenesis and anti-angiogenic therapy. *Keio J Med*. 2012;61(2):47–56.
58. Cathcart MC, O'Byrne KJ, Reynolds JV, O'Sullivan J, Pidgeon GP. COX-derived prostanoid pathways in gastrointestinal cancer development and progression: novel targets for prevention and intervention. *Biochim Biophys Acta*. 2012;1825(1):49–63.
59. Yeh S, Hu YC, Rahman M, et al. Increase of androgen-induced cell death and androgen receptor transactivation by BRCA1 in prostate cancer cells. *Proc Natl Acad Sci U S A*. 2000;97(21):11256–11261.



60. Castro E, Eccles R. The role of BRCA1 and BRCA2 in prostate cancer. *Asian J Androl.* 2012;14(3):409–414.
61. Klein HL. The consequences of Rad51 overexpression for normal and tumor cells. *DNA Repair.* 2008;7(5):686–693.
62. Qidwai MT, Jamal F, Singh D, Sharma RK. Factors modifying transcriptional regulation of signaling genes have putative role in tumor development and progression in humans. *Med Hypotheses.* 2012;79(6):805–812.
63. Gebhardt C, Nemeth J, Angel P, Hess J. S100A8 and S100A9 in inflammation and cancer. *Biochem Pharmacol.* 2006;72(11):1622–1631.
64. Grebhardt S, Veltkamp C, Strobel P, Mayer D. Hypoxia and HIF-1 increase S100A8 and S100A9 expression in prostate cancer. *Int J Cancer.* 2012;131(12):2785–2794.
65. Hong KJ, Dunn DM, Shen CL, Pence BC. Effects of *Ganoderma lucidum* on apoptotic and anti-inflammatory function in HT-29 human colonic carcinoma cells. *Phytother Res.* 2004;18(9):768–770.
66. Joseph S, Sabulal B, George V, Antony KR, Janardhanan KK. Antitumor and anti-inflammatory activities of polysaccharides isolated from *Ganoderma lucidum*. *Acta Pharm.* 2011;61(3):335–342.
67. Lin JM, Lin CC, Chiu HF, Yang JJ, Lee SG. Evaluation of the anti-inflammatory and liver-protective effects of *anoectochilus formosanus*, *Ganoderma lucidum* and *Gynostemma pentaphyllum* in rats. *Am J Chin Med.* 1993;21(1):59–69.
68. Patani N, Douglas-Jones A, Mansel R, Jiang W, Mokbel K. Tumour suppressor function of MDA-7/IL-24 in human breast cancer. *Cancer Cell Int.* 2010;10:29.
69. Murtas D, Maric D, De Giorgi V, et al. IRF-1 responsiveness to IFN-gamma predicts different cancer immune phenotypes. *Br J Cancer.* 2013;109(1):76–82.
70. Boudny V, Kovarik J. JAK/STAT signaling pathways and cancer. Janus kinases/signal transducers and activators of transcription. *Neoplasma.* 2002;49(6):349–355.
71. Sauane M, Gupta P, Lebedeva IV, et al. N-glycosylation of MDA-7/IL-24 is dispensable for tumor cell-specific apoptosis and “bystander” antitumor activity. *Cancer Res.* 2006;66(24):11869–11877.
72. Sauane M, Gopalkrishnan RV, Lebedeva I, et al. Mda-7/IL-24 induces apoptosis of diverse cancer cell lines through JAK/STAT-independent pathways. *J Cell Physiol.* 2003;196(2):334–345.
73. Schwartz JL, Shajahan AN, Clarke R. The role of interferon regulatory factor-1 (IRF1) in overcoming antiestrogen resistance in the treatment of breast cancer. *Int J Breast Cancer.* 2011;2011:912102.
74. Li YJ, Liu G, Li Y, et al. *mda-7/IL-24* expression inhibits breast cancer through up-regulation of growth arrest-specific gene 3 (*gas3*) and disruption of beta1 integrin function. *Mol Cancer Res.* 2013;11(6):593–603.
75. Xu S, Oshima T, Imada T, et al. Stabilization of MDA-7/IL-24 for colon cancer therapy. *Cancer Lett.* 2013:421–430.
76. Hu Y, Park-Min KH, Yamilina A, Ivashkiv LB. Regulation of STAT pathways and IRF1 during human dendritic cell maturation by TNF-alpha and PGE2. *J Leukoc Biol.* 2008;84(5):1353–1360.



## Supplementary Materials

**Supplementary Table 1.** Human PCa cell lines with their respective culture media and doubling times.

CELL LINE	DESCRIPTION	CULTURE MEDIA	DOUBLING TIME
PC3	Human prostate adenocarcinoma, obtained from bone metastasis	Minimum Eagle Media (MEM) + 10% of Fetal Calf Serum (FCS) + 1% of Penicillin/Streptomycin/Glutamine (100 U/mL) (Morgate Biotech)	24 hours
DU145	Human prostate adenocarcinoma, obtained from brain metastasis		30 hours
HEK293	Noncancerous human kidney cells, obtained from an embryo		24 hours

**Supplementary Table 2.** A list of the primary Abs used in WB, together with their molecular weights and dilution ratio (Abcam). Abs were diluted in 5 mL of 5% nonfat dry milk.

TARGET PROTEIN	TYPE	PREDICTED MOLECULAR WEIGHT	DILUTION RATIO
S100A9	Mouse monoclonal	14 kDa	1:50
BRCA1	Mouse monoclonal	207 kDa	1:100
RAD51	Mouse monoclonal	37 kDa	1:100
IRF1	Mouse monoclonal	37 kDa	1:250
IL24	Mouse monoclonal	38 kDa	1:500
b-actin	Mouse monoclonal	42 kDa	1:1000
CDH11	Mouse monoclonal	87 kDa	1:250